

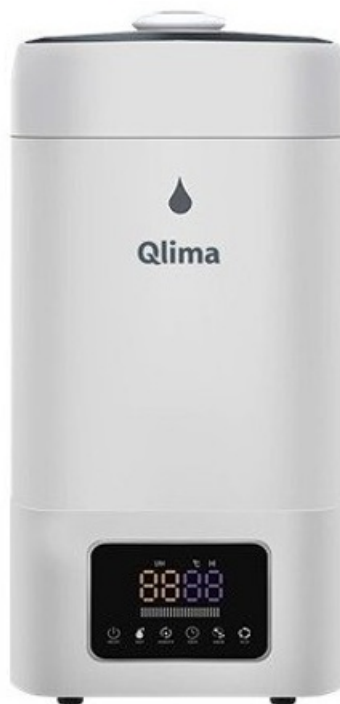


Qlima H 724 Ultrasonic Humidifier Instruction Manual

[Home](#) » [Qlima](#) » Qlima H 724 Ultrasonic Humidifier Instruction Manual

Qlima

H 724





OPERATING MANUAL

Dear Sir, Madam,

Congratulations on the purchase of your humidifier. You have acquired a high-quality product that will give you many years of pleasure if you use it responsibly. Please read the user's manual first in order to ensure the optimum life span of your humidifier. On behalf of the manufacturer, we provide a two-year warranty on the material- or manufacturing defects.

Enjoy your humidifier.

Yours sincerely,

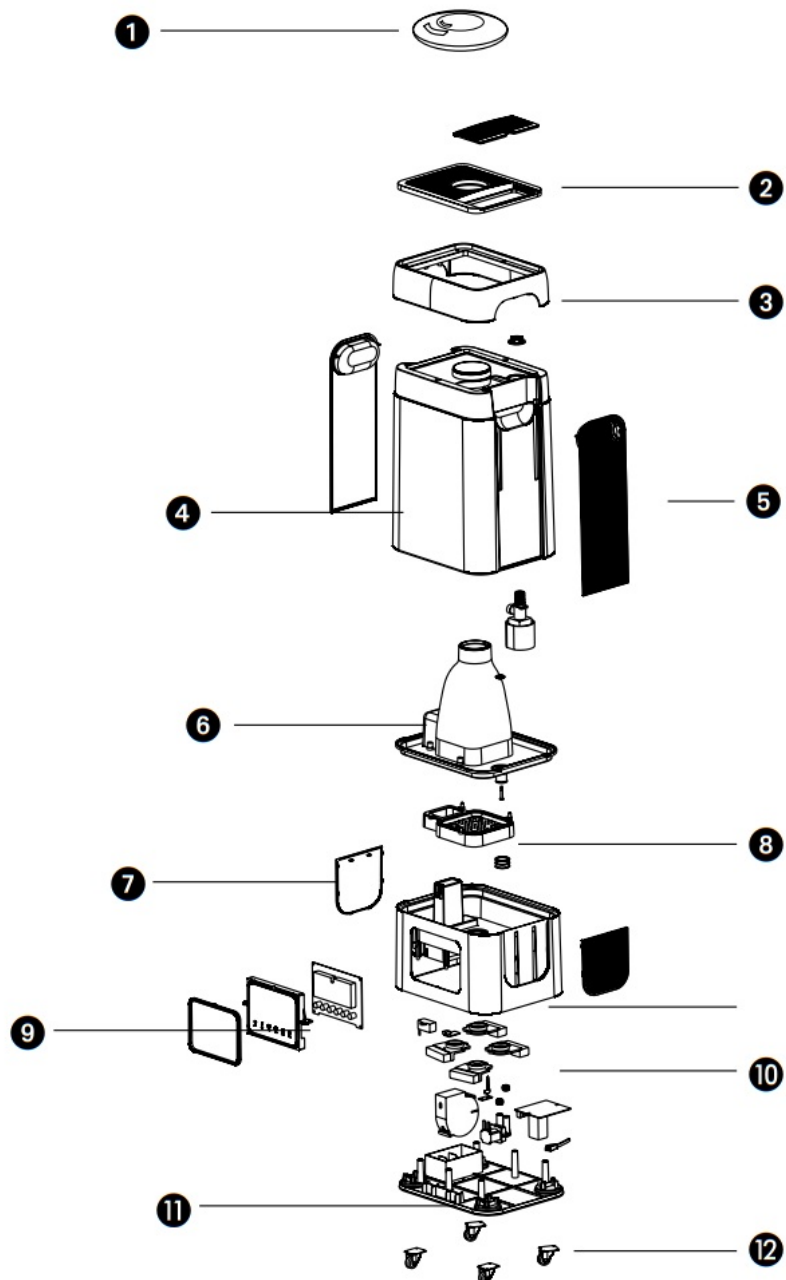
PVG Holding B.V.
Customer Service Department

Contents [[hide](#)]

- [1 PLEASE READ THE USER'S MANUAL FIRST.](#)
- [2 IF YOU HAVE ANY DOUBTS, CONSULT YOUR DEALER.](#)
- [3 SAFETY](#)
- [4 INSTALLATION](#)
- [5 OPERATION](#)
- [6 WARNINGS](#)
- [7 MAINTENANCE](#)
- [8 FAULTS](#)
- [9 TECHNICAL SPECIFICATIONS](#)
- [10 CONDITIONS OF WARRANTY](#)
- [11 INTERNET](#)
- [12 Documents / Resources](#)
 - [12.1 References](#)
- [13 Related Posts](#)

PLEASE READ THE USER'S MANUAL FIRST.

IF YOU HAVE ANY DOUBTS, CONSULT YOUR DEALER.



IMPORTANT COMPONENTS

1. Mist Output Nozzle
2. Top Cover
3. Tank Cover
4. Water Tank
5. Tank Front Cover
6. Tank Base
7. Base Cover
8. Water Fender
9. LED Screen
10. Ultrasonic
Transducer
11. Base Plate

12. Caster



ATTENTION

Before use please check the ultrasonic transducer first. When the ultrasonic transducer is damaged, do not use this machine.

SAFETY

- Read this user manual carefully before you use the appliance and keep it for future reference.
- The installation must be completely in accordance with local regulations, ordinances, and standards.
- This product is only suitable for use as a humidifier in normal indoor household operations.
- The appliance is suitable for mains voltages ranging from 220-240 V ~ 50/60 Hz.
- The capacity of the humidifier depends on the temperature and the humidity in the room.
- This appliance is not intended for use by persons (including children) with reduced physical, sensory or mental capabilities, or lack of experience and knowledge unless they have been given supervision or instruction concerning the use of the appliance by a person responsible for their safety.
- The electricity supply to the device must be checked by a recognized professional if you have any doubts regarding the compatibility.
- Always take the plug out of the socket when the device is not in use.
- Do not insert objects into the openings of the device.
- Keep the spraying mouth from directly facing furniture or electronic equipment to avoid damage.
- Never turn it on when waterless.
- Never move the appliance when there's water inside.
- Never submerge the product in water or other fluids.
- Due to the emission of steam care should be taken when using the appliance.
- Tap water can only be used when the hardness of the water is between 40 and 75 mg of Calcium Carbonate per liter. Water with a higher level of Calcium Carbonate will likely cause scaling inside the product and/or on surfaces or items surrounding the product (f.e. furniture). Hard water can cause the product to be damaged and break.
This is not covered by the warranty.
- Use a de-scaling fluid to remove scaling.
- To prevent legionella infections, it is necessary to replace the water in the water tank at least once a week.
- Never turn on the unit, when the water in the water tank is in there for over a week.
- Do not add other fluids to the (demineralized) water in the water container. Fluids like aroma oils could cause damage to the product.
- This appliance can be used by children aged 8 years and above and persons with reduced physical, sensory or mental capabilities or lack of experience and knowledge if they have been given supervision or instruction concerning the use of the appliance in a safe way and understand the hazards involved.
- Children shall not play with the appliance.
- Cleaning and user maintenance shall not be made by children without supervision.
- Unplug the appliance during filling and cleaning.
- The appliance should always be placed on a firm, flat, waterproof surface at least 1.2 m away from the bedside and 30 cm from the wall.

- If the supply cord is damaged, it must be replaced by the manufacturer, its service agent, or similarly qualified persons in order to avoid a hazard.

INSTALLATION

ATTENTION BEFORE USE

1. Do not place this machine near the human body to avoid discomfort of the human body.
2. Do not place this machine near wooden furniture to prevent furniture become damp and damaged.
3. Place this machine evenly and keep a distance from the wall of at least 30 cm to keep it running normally.



ATTENTION

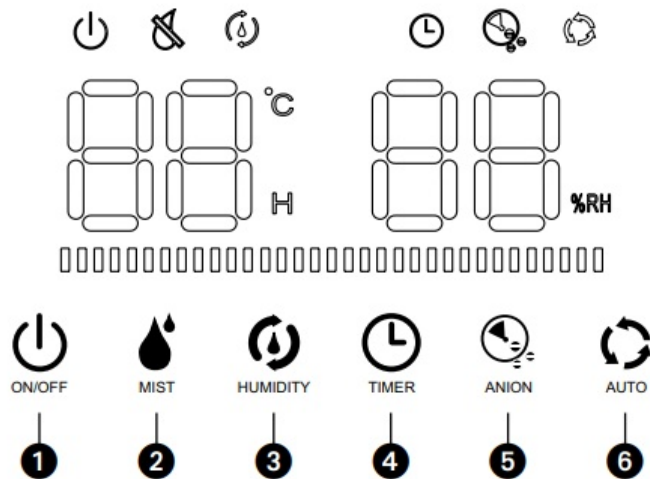
Before use please check the ultrasonic transducer first. When the ultrasonic transducer is damaged, do not use this machine.

USAGE METHOD



1. Place the unit on a solid and flat surface (to prevent tilting), open the tank cover, add clean tap or distilled water into the tank, and fill to the highest water level.
2. Close the tank cover, insert the plug into the socket, turn on the power, press the power switch button on, the humidifier start to work, and mist output can be adjusted.
3. When the water tank is empty, the device switches off automatically, at the same time the indicator light turns red.
4. Add water after unplugging the power plug.
5. Turn off and unplug the humidifier before moving it otherwise the unit may not function properly.

OPERATION



1. **On/Off:** By pressing the 'on/off key, the device starts and mist output will go into level 3. Temperature and humidity will be displayed. Press again to shut off the machine power.
2. **Mist:** Press the 'Mist' key to switch the mist level from level 1 to 5. The set value will be shown on the display.
3. **Humidity:** Press the 'Humidity' key to adjust the humidity from 45% to 95% in steps of 5%. With the humidity set, the unit will automatically start and stop to reach the requested humidity level.
4. **Timer:** Press the 'Timer' key to set up the timer from 1 to 12 hours. The set time will be shown in the timer display. When the time runs out the unit will shut down.
5. **Anion:** Press the 'Anion' key to turn on/off the ionizer function, the anion indicator will light up when this function is turned on.
6. **Auto:** Press the 'Autokey to turn on the auto mode and the unit will be set to 75% humidity automatically. The display and signal indicators will also be dimmed which makes this model suitable for sleeping. Press any key to wake up the screen and turn off this mode.



ATTENTION

When the unit runs out of water and the tank is empty it will stop humidifying immediately but the fan will continue for 10s to assure the unit is blown dry. In the meantime, the indicator light on the screen will light up red until the water is re-filled.

WARNINGS

Allow the device to reach room temperature for at least 30 minutes before initial use.

The water temperature should not exceed 40°C. Always use clean water.

Do not add any liquids (like etheric oils) other than clean water to the tank.

Don't place the unit near a heat source or in direct sunlight and keep 2m distance from furniture and electrical appliances.

Use the humidifier at room temperatures (5°C to 40°C) and at a relative humidity of <80% RH.

When running or filled do not move the unit.

MAINTENANCE



WARNING

Before cleaning and maintaining this machine, do turn it off and pull out the plug. Make sure the machine is powered off to avoid electric shock.

CLEAN OSCILLATING PLATE

1. Take out the water tank of the humidifier.
2. Pour out residual water in the water sink
3. Use a clean brush to clean the oscillating plate. Do not use household cleaners to clean oscillating plates which will affect their lifetime.



ATTENTION

Do wear gloves when cleaning oscillating plates to avoid hand scald by hot water in the water sink.

CLEAN OUTER APPEARANCE OF HUMIDIFIER

1. Power off and pull out the plug
2. Dip a little soap water on a towel to clean the outer appearance of the humidifier
3. Do not make water flow inside of the machine. It may cause damage to your machine and electric shock.
4. After cleaning, place this machine in ventilating place to make it dry (do not expose it to the sun). Only when the machine is completely dry can you use it.

FAULTS

Problem	Possible Causes	Solution
No signal lights, no airflow, no mist	No power	(Re)plug the unit
Signal lights on, no airflow, no mist	The water level in the tank is too high	Drain water from the tank so it is below the Max. level.
Reduced capacity	Limescale on the transducer	Remove limescale from the ultrasonic transducer, by using a citric acid based descaling agent, add it to 60 °C water, let the agent dissolve completely, and soak for 5-10 minutes, then use a clean cloth to remove excess water.
	Polluted or stale water in the tank	Remove the water from the tank, and clean and refill the tank.
Abnormal noise	Tank empty indicator beeps	Refill the water tank
	Ultrasonic transducer causes the appliance to resonate.	Place the device on a more stable surface



ATTENTION

If the problem persists, contact a local dealer or your nearest customer service center. Provide them with a detailed description of the unit malfunction as well as your model number.

TECHNICAL SPECIFICATIONS

Product Description	Ultrasonic humidifier
Model No.	H 724
Voltage	220-240V
Frequency	50/60Hz
Water tank size	23.8L
Mist output capacity	24L/day
Rated power	110W

CONDITIONS OF WARRANTY



There is a two-year warranty on your humidifier from the date of purchase. All material or manufacturing defects will be repaired free of charge. The following applies:

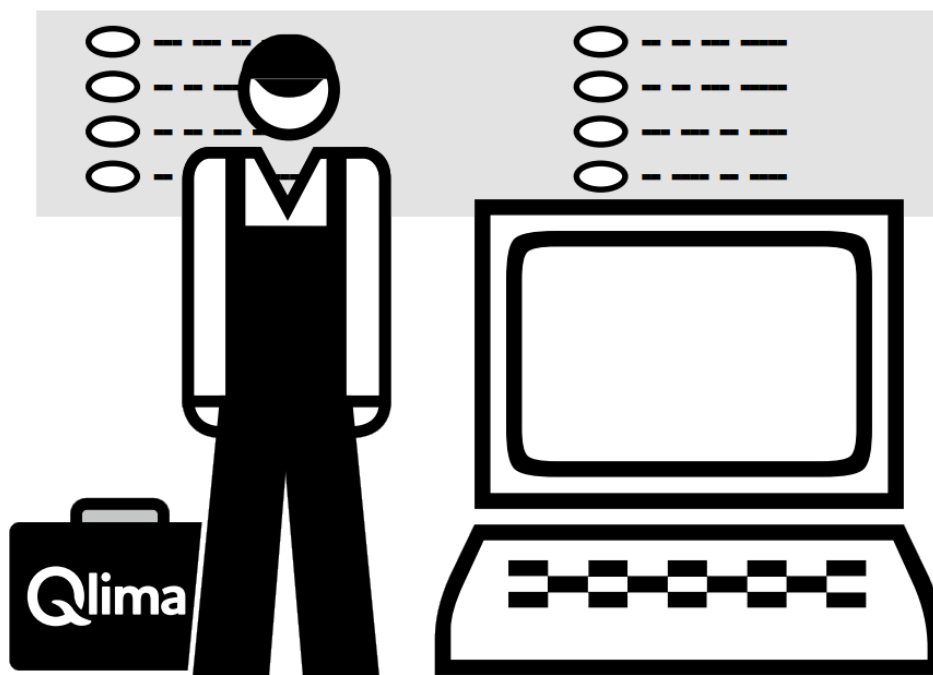
- All claims for compensation, including consequential damage, will not be entertained.
- Any repairs or replacement of components during the warranty period will not result in an extension of the warranty period.
- The warranty will expire if any alterations have been made, no genuine components have been fitted or if the humidifier has been repaired by a third party.
- Components subject to normal wear and tear, such as the air filter, are not covered by the warranty.
- The warranty is only valid on the presentation of the original, unaltered, and date-stamped purchase receipt.
- The warranty does not cover damage caused by actions that deviate from those as described in the user's manual or by neglect.
- Transportation costs and the risks involved during the transportation of the humidifier or components shall always be for the account of the purchaser.

To prevent unnecessary expenses, we recommend that you always carefully read the user's manual first. If this does not provide a solution, take the humidifier to your distributor for repair.

Do not dispose of electrical appliances as unsorted municipal waste, use separate collection facilities. Contact your local government for information regarding the collection systems available. If electrical appliances are disposed of in landfills or dumps, hazardous substances can leak into the groundwater and get into the food chain, damaging your health and well-being. When replacing old appliances with new ones, the retailer is legally obligated to take back your old appliance for disposal at least free of charge.

INTERNET

In order to better be able to be of service to you the most recent version of the user, installation and/or service guide can be downloaded from www.qlima.com.




www.Qlima.com

If you need information or if you have a problem, please visit our website (www.qlima.com) or contact our sales support (you find its phone number on www.qlima.com)

PVG Holding BV – Kanaalstraat 12 C – 5347 KM Oss – the Netherlands
P.O. Box 96 – 5340 AB Oss – the Netherlands

MarCom mvz©210503 man_H724 ('21) V1

Documents / Resources

	<p>Qlima H 724 Ultrasonic Humidifier [pdf] Instruction Manual H 724, Ultrasonic Humidifier</p>
---	--

References

- [Qlima](#)