



Qlima GH-741RM Gas Heater Instruction Manual

[Home](#) » [Qlima](#) » Qlima GH-741RM Gas Heater Instruction Manual 

Contents

- [1 Qlima GH-741RM Gas Heater](#)
- [2 Instruction](#)
- [3 INSTALLATION](#)
- [4 OPERATION](#)
- [5 DISCLAIMERS GAS HEATERS](#)
- [6 ASSEMBLING THE GAS HEATER](#)
- [7 GAS LEAKS](#)
- [8 MAINTENANCE](#)
- [9 TROUBLESHOOTING](#)
- [10 END OF LIFE AND DISPOSAL](#)
- [INSTRUCTIONS](#)
- [11 GUARANTEE CONDITIONS](#)
- [12 Documents / Resources](#)
- [13 Related Posts](#)

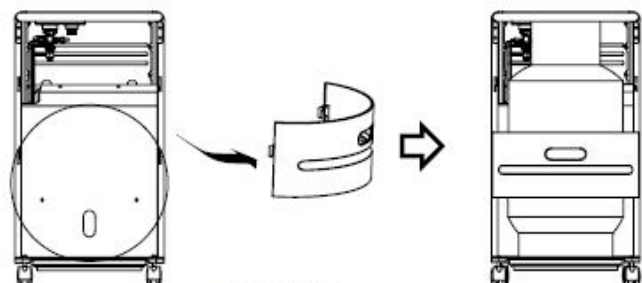
Qlima

Qlima GH-741RM Gas Heater

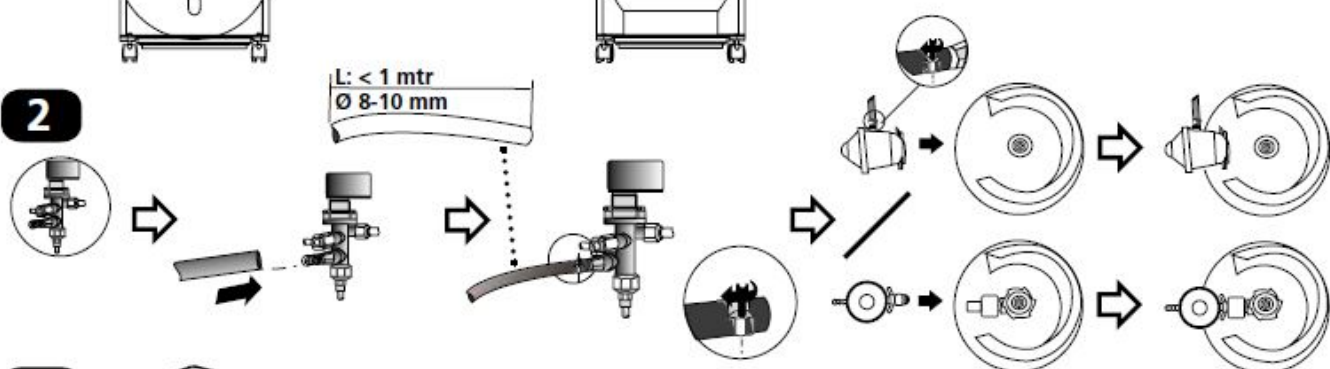


Instruction

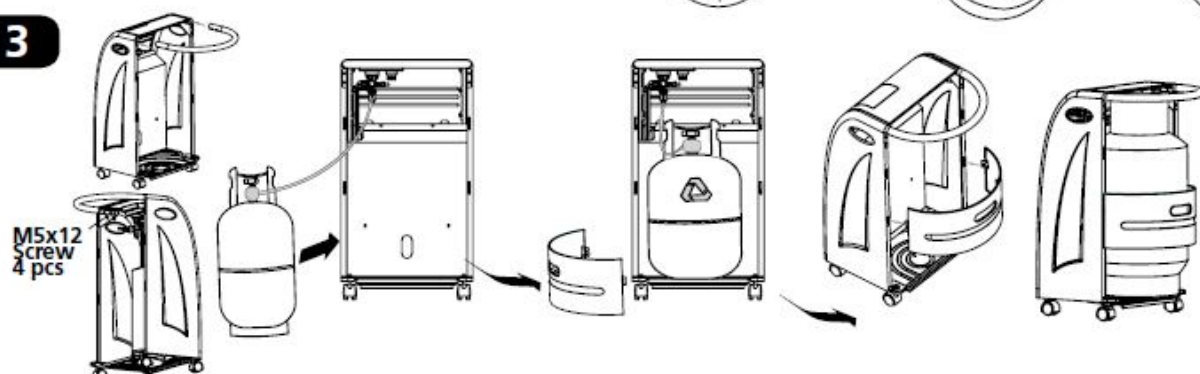
1



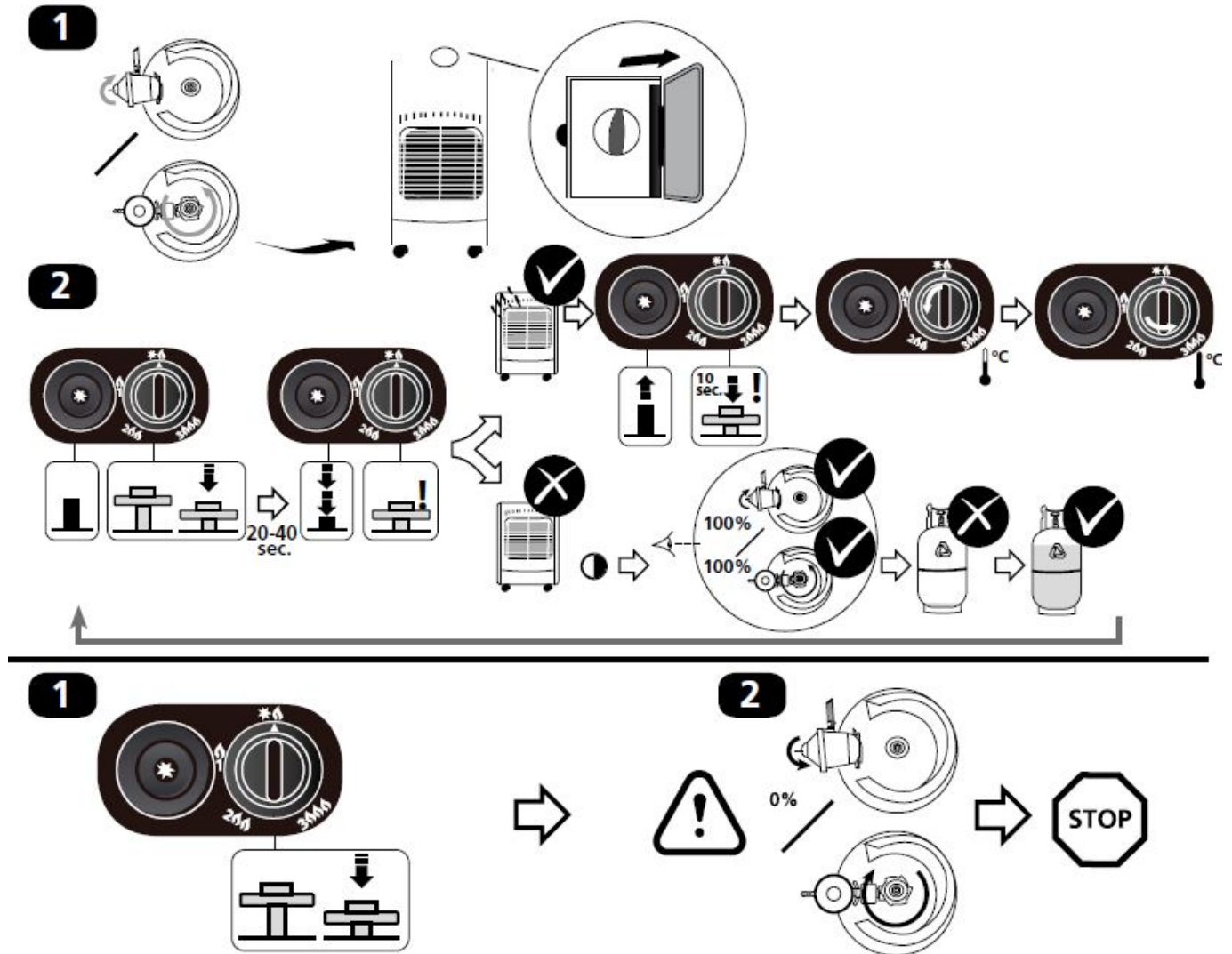
2



3



OPERATION



DISCLAIMERS GAS HEATERS

Read this user manual carefully before using the appliance and keep it for future reference. Install this device only when it complies with local/national legislation, ordinances and standards. This product is intended to be used as a heater in residential houses and is only suitable for use in dry locations, in normal household conditions, indoors in living room, kitchen and garage. Regardless of the model, you must always make sure that the heater is used in a room large enough to enable the heater to be used safely without extra ventilation. If the room is smaller than required, you must always open a door or window slightly (ensuring an opening of approx. 2.5 cm). It is important that every room where the heater is used has sufficient air intake and efficient air outflow (both openings must have a minimum cross-section of 50 cm²). No modifications to the safety system are allowed, as that will invalidate the guarantee that the air probe will work properly. Consult your dealer in case of doubt. This gas heater requires a hose and a regulator. In case of doubt ask for information from your gas supplier. This heater is constructed in conformity with the EN449:2002+A1:2007 standard and the applicable Gas Appliance Regulation (EU) 2016/426 (GAR).

WARNINGS

- Read the Directions for Use before using the heater;
- Reference to country installation regulations in force: check your local national installation regulations in force. Only install the heater when it complies with national regulations, laws and standards;
- Install the heater according to the instructions as described in the installation section of the directions for use;
- This heater is manufactured according to CE safety standards. Nevertheless, as with any other heating device,

care must be taken;

- The heater is intended to provide supplementary heat. Therefore do not consider it as a central heater;
- The heater is only suitable for use in dry, not dusty, locations.
- Do not use in leisure vehicles such as caravans and auto caravans.
- Make sure that the correct gas is used and that the gas containers are not exposed to heat or extreme temperature changes. Always store the gas containers in a cool, dry and dark place;
- Always use a suitable and approved low-pressure regulator. In case of any doubt contact your local dealer;
- Use the heater only in well-ventilated rooms. In this way the gases produced by combustion will be removed by fresh air;
- Never use the heater in places where harmful gases or fumes may be present (e.g. exhaust gases or paint fumes);
- If the heater is positioned too close to inflammable materials you may risk fire;
- For safety reasons take care when children or animals are in the proximity of the heater, as with any other heating device, and make sure that children are always aware of the presence of a burning heater;
- This appliance is not intended for use by persons (including children) with reduced physical, sensory or mental capabilities, or lack of experience and knowledge, unless they have been given supervision or instruction concerning use of the appliance by a person responsible for their safety.
- After use close the gas container valve.
- Follow the instructions to find any gas leakage as described in these Directions for Use.
- If the supply cord is damaged, it shall be replaced by the manufacturer, its service agent or similarly qualified persons in order to avoid a hazard.
- Children should be supervised to ensure that they do not play with the appliance.
- In order to avoid overheating, do not cover the device.
- The device must not be located immediately below a socket outlet.
- Do not use this heater in the immediate surroundings of a bath, a shower or a swimming pool.
- The guard on this appliance is to prevent risk of fire or injury from burns and no part of it shall be permanently removed. IT DOES NOT GIVE FULL PROTECTION FOR YOUNG CHILDREN OR THE INFIRM.
- This appliance can be used by children aged from 8 years and above and persons with reduced physical, sensory or mental capabilities or lack of experience and knowledge if they have been given supervision or instruction concerning use of the appliance in a safe way and understand the hazards involved.
- Children shall not play with the appliance.
- Cleaning and user maintenance shall not be made by children without supervision.
- Only change the gas container in a flame-free environment
- Children of less than 3 years should be kept away unless
- continuously supervised.
- Children aged from 3 years and less than 8 years shall only switch on/off the appliance provided that it has been placed or installed in its intended normal operating position and they have been given supervision or instruction concerning use of the appliance in a safe way and understand the hazards involved.
- Children aged from 3 years and less than 8 years shall not plug in, regulate and clean the appliance or perform user maintenance.

ASSEMBLING THE GAS HEATER

Before connecting the low-pressure regulator, please follow the instructions provided with the low-pressure

regulator. The manufacturer is not responsible for any harm or damage if attention is not paid to the points described above. Do not twist the flexible tubing or the hose. Before connecting the gas container to the device

- Check and clean the filter of the regulator
- Release a little bit of gas (outdoors) from the gas container. This will clear present dirt particles to prevent them from entering the pressure regulator or device.

Each time when gas cylinder or gas tube is connected: always do a leakage test with soapy water – see chapter 'gas leaks'.

Problem:

no flame/no ignition in winter (temp. $< 7^{\circ}\text{C}$)

Solution:

check whether butane or propane is being used: butane will burn ever more poorly as the temperature drops below 7°C because it then turns into liquid. With LPG (= propane/butane mixture), it will often help to give the gas cylinder a shake.

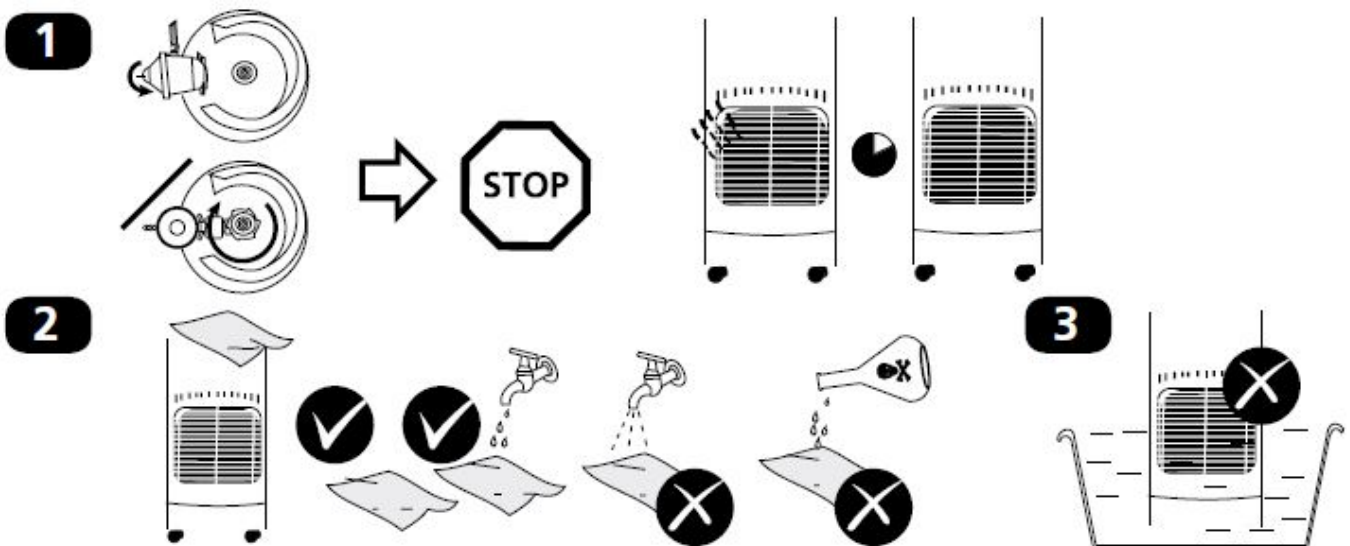
USE

1. Turn the regulation knob into position.
2. Release the knob and turn it to the position corresponding with the desired amount of heat.
3. To turn off the device, close the gas container valve.

GAS LEAKS

1. Close the gas container valve.
2. Open windows.
3. Prepare a bucket of soapy water.
4. Open the gas container.
5. Brush the soapy water on all fittings and connections of the gas circuit.
6. If there is a gas leak, bubbles will rise up from the location of the leak.
7. If a leak is found, close the gas container.
8. Tighten the fitting and the metal rings of the connection.
9. Open the gas container and repeat the procedure again.

MAINTENANCE



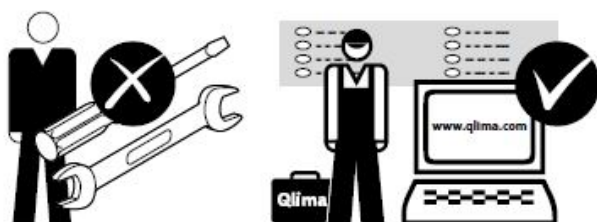
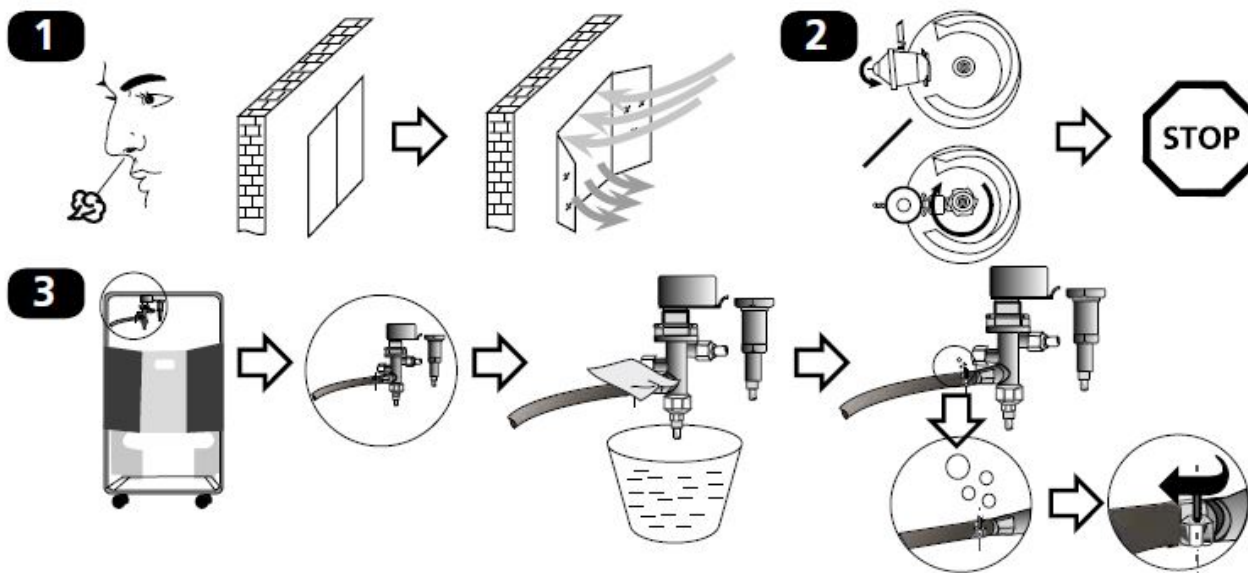
1. Switch off the gas heater and allow it to cool down for at least 10 minutes before cleaning it.
2. Keep the gas heater clean. Remove any dust and other dirt with a damp cloth. Use regular cleaning products for stubborn stains. Clean the heater thoroughly once a year.
3. inspect it each time before using it. Use a mixture of soapy water and water to check the connections for leaks. If any bubbles occur, there is a leak. It should be repaired immediately.
4. Check the hose / regulator connection each time before using it. If the hose shows any sign of wear and tear or has any cracks, it should be replaced immediately.
5. The heater should be inspected by a certified service station once a year.

The heater should not be installed and/or used:

- in rooms that are used as a bathroom, shower room or bedroom, or in areas such as a cellar or dusty, highly flammable rooms.
- in rooms with a surface area of less than 84 cubic metres when used in a house.
- in high rise flats.

It is very important that in the rooms where the heater is located and is also used, at least as much air supply is guaranteed as each gas heater requires. Sufficient air supply means that there is an opening of at least 100 cm². Such an opening can be created, for instance, between door and floor or at the window. Use only a correct low-pressure regulator according to EN16129. Outlet pressure details: see rating label. Do not move the appliance when operating, shocks and bumps may activate the safety device. Do not twist the flexible tubing or hose. If you fail to consult and/or follow up the rules, instructions and explanation, the warranty will no longer be valid, and the manufacturer will no longer deal with any damage to the appliance and/or your environment under the warranty. The use of this product and the elements required for that purpose is entirely at the end user's own risk.

TROUBLESHOOTING



END OF LIFE AND DISPOSAL INSTRUCTIONS

- Disconnect the gas container from the gas heater.
- Store the gas container in a well-ventilated room. Position it far away from inflammable, explosive or hot materials and preferably not in the home. In addition, it should never be stored in the basement or attic.
- The gas heater should be stored in a dry place and should be protected against dust (preferably in the original packaging).
- If it is decided that the gas heater is not to be used any more, it is recommended that it be disconnected from the gas container. Also cut the rubber hose. If children play with the heater, make sure that dangerous parts are removed. Never dispose of non-biodegradable products in the environment, but dispose of them in accordance with current national legislation. At the end of its lifetime, the product must not be disposed of as urban waste. It must be taken to a special local authority differentiated waste collection center or to a dealer providing this service. Disposing of a household appliance separately avoids possible negative consequences for the environment and health deriving from inappropriate disposal and enables the constituent materials to be recovered in order to make significant savings in energy and resources. As a reminder of the need to dispose of household appliances separately, the product is marked with an image of a crossed-out wheeled dustbin.

GUARANTEE CONDITIONS

The appliance is supplied with a 24-month guarantee, commencing on the date of purchase. All material and manufacturing defects will be repaired or replaced free of charge within this period. The following rules apply:

1. We expressly refuse all further damage claims, including claims for collateral damage.
2. Repairs to or replacement of components within the guarantee period will not result in an extension of the guarantee.
3. The guarantee is invalidated if any modifications have been made, non-genuine parts are fitted or repairs are carried out by third parties.
4. Components subject to normal wear, such as filters, batteries, lamps and heating elements are not covered by the guarantee.
5. The guarantee is valid only when you present the original, dated purchase invoice and if no modifications have been made.
6. The guarantee is invalid for damage caused by neglect or by actions that deviate from those in this instruction booklet.
7. Transportation costs and the risks involved during the transportation of the appliance or components of the appliance shall always be for the account of the purchaser
8. Damage caused by not using suitable spare parts is not covered by the guarantee. To prevent unnecessary expense, we recommend that you always first carefully consult the instructions for use. Take the appliance to your dealer for repairs if these instructions do not provide a solution.


- | | |
|---------------------|---|
| • Model name | GH 741 RM |
| • Gas | 4.1 kW |
| • Energy efficiency | A |
| • Gas category | I3B/P(30) propane, butane or their mixtures at 28-30 bar, G30/G31: 30 mbar* // I3+ butane at 28-30 mbar / Propane at 37 mbar, G30: 28-30 mbar, G31: 37 mbar** |
| • Consumption | 298 g/h (max.) |
| • Dimensions | 290x380x550 mm |

- (WxDxH) Countries of destination

This product is not suitable for primary heating purposes. Always use a suitable and approved low-pressure regulator. In case of any doubt contact your local dealer; Use the heater only in well-ventilated rooms. Do not use in leisure vehicles such as caravans and auto caravans. This appliance requires a hose and gas regulator. Check with your gas supplier. Read the instructions before use. Change gas container in accordance with the provided instructions. This product is not suitable for primary heating purposes. Refer to the instruction manual for the assembly, installation, maintenance, disassembly, recycling, and/ or disposal at end-of-life. The before the described gas heater is in conformity with the following EC directive and Regulations:

- Gas Appliances Regulation (EU) 2016/426 (GAR)
- Commission Delegated Regulation (EU) 2015//1186 & 2015/1188 The following harmonized standards have been applied:
- EN449:2002 + A1:2007

Documents / Resources

	Qlima GH-741RM Gas Heater [pdf] Instruction Manual GH-741RM, Gas Heater, GH-741RM Gas Heater
---	---