



## Qlima D 630 P Smart WiFi Wit User Manual

[Home](#) » [Qlima](#) » Qlima D 630 P Smart WiFi Wit User Manual 

### Contents

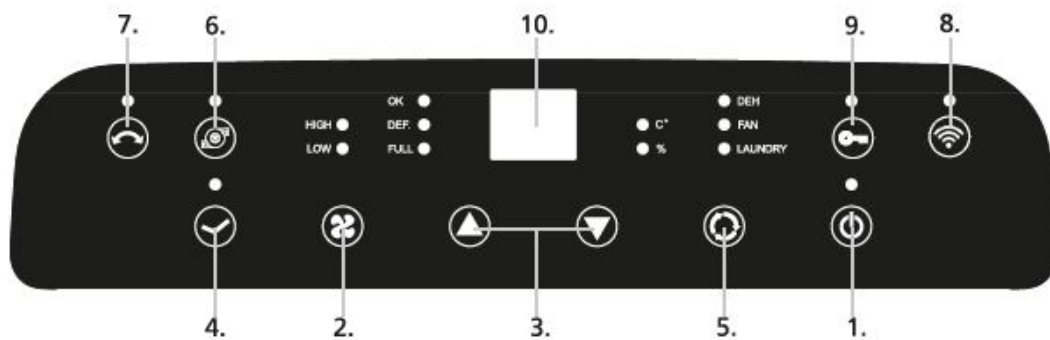
- [1 Qlima D 630 P Smart WiFi Wit](#)
- [2 instruction](#)
- [3 Documents / Resources](#)
- [4 Related Posts](#)

# Qlima

## Qlima D 630 P Smart WiFi Wit

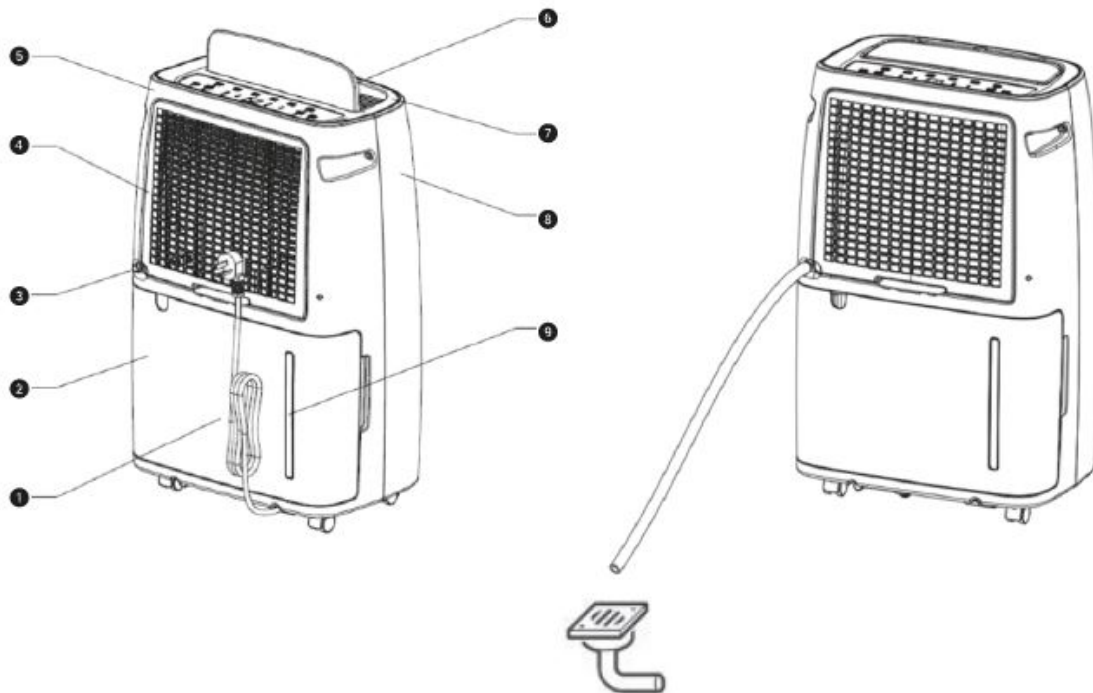


### instruction

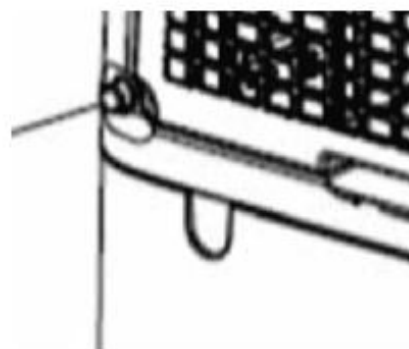
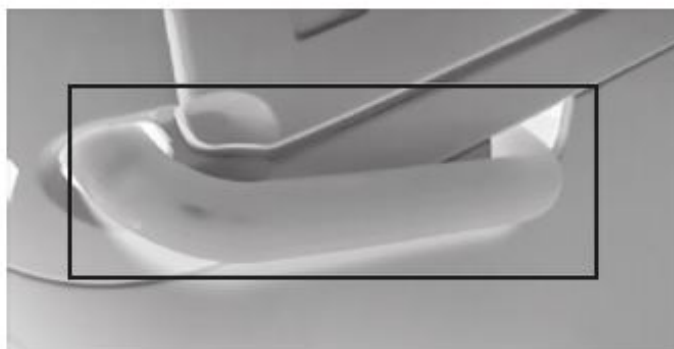


### **NOTE: THIS PRODUCT CAN BE USED IN 2 WAYS.**

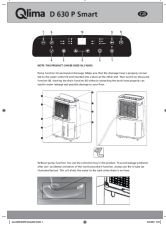
Pump function for permanent drainage: Make sure that the drainage hose is properly connected to the water outlet (3) and inserted into a drain at the other end. Then switch on the pump function (6). Starting the drain function (6) without connecting the drain hose properly can lead to water leakage and possible damage to your floor.



Without pump function: You use the collection tray in the product. To avoid leakage problems after use / accidental activation of the continuous drain function, always use the U-tube (as illustrated below). This will direct the water to the tank when there is no hose.



## Documents / Resources

	<p><a href="#">Qlima D 630 P Smart WiFi Wit</a> [pdf] User Manual D 630 P, Smart WiFi Wit</p>
---	---