




qingping CGP22C C02 and Temp and RH Monitor User Manual

[Home](#) » [qingping](#) » qingping CGP22C C02 and Temp and RH Monitor User Manual 



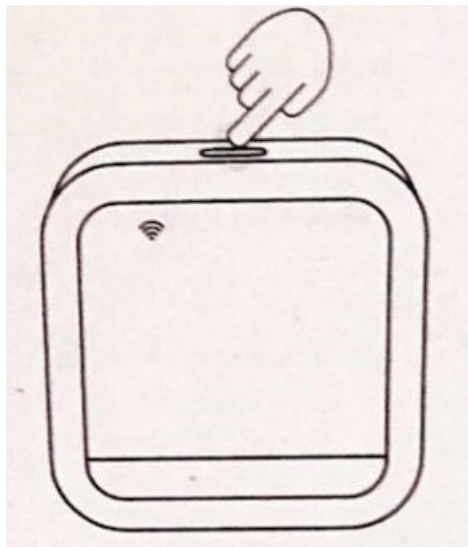
CGP22C C02 and Temp and RH Monitor User Manual

Contents

- 1 Power On
- 2 Power Off
- 3 Connect Qingping IOT App
- 4 Check Network Signal
- 5 Hang the Product
- 6 Restore Factory Settings
- 7 Sensor Type & Operating Range
- 8 Specifications
- 9 FAQ
- 10 Warranty
- 11 Non-warranty
- 12 FCC Warning
- 13 Documents / Resources
 - 13.1 References

Power On

Press and hold the button on top of the device:



- If it does not turn on, try again after charging the device.
- Qingping C02 & Temp & RH Monitor (CGP22C) will automatically shut down after 15 minutes of no operation by default. You can use Qingping IOT app to change the relative settings.

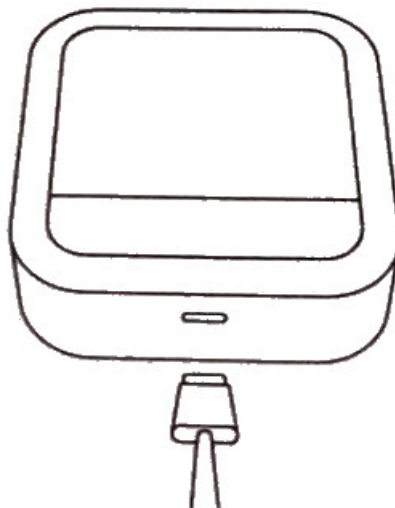
Power Off

Press and hold the button on top of the device for 6 seconds to turn it off.

- The product will enter Bluetooth pairing mode if you only press the button for 2 seconds.

Charging

Charge the product with a USB power adaptor with 5V  1A or higher charging current and a USB-C cable:



The battery icon will blink when the product is charging, and it will stop when the battery level reaches 100%.

- The product will be heated up while charging, which may affect the accuracy of temperature and humidity readings. Temperature and humidity readings will become normal 30 minutes after charging is completed.

Connect Qingping IOT App

Please visit qingpingiot.com/app or scan the below QR code with your phone to download Qingping IOT app.



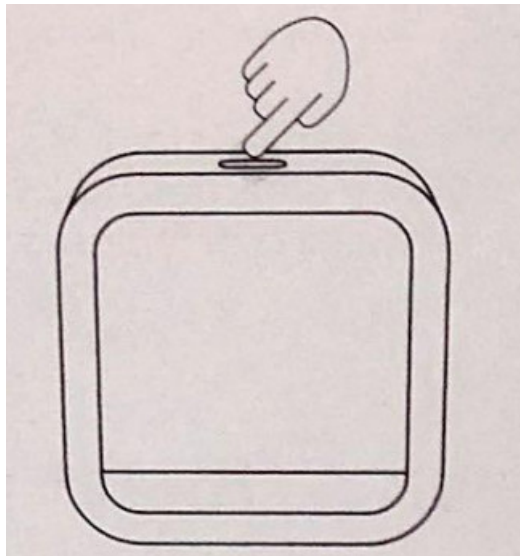
<https://qingpingiot.com/app>

Or search "Qingping IOT" on App Store or Google Play After installing the app, please open it and add a device, and then follow the instructions. After adding the product, you can use Qingping IOT app or website qingpingiot.com to configure uploading intervals and alert conditions, check historical data.

- Qingping IOT supports changing more settings of Qingping CO2 & Temp & RH Monitor (CGP22C) , such as the timing of auto shutdown, the interval of CO2 measurement, the rating standards of CO2reading, and the timing of buzzer ringing, etc.
- Qingping IOT supports Android 5.0 and iOS 9.0 or newer.

Check Network Signal

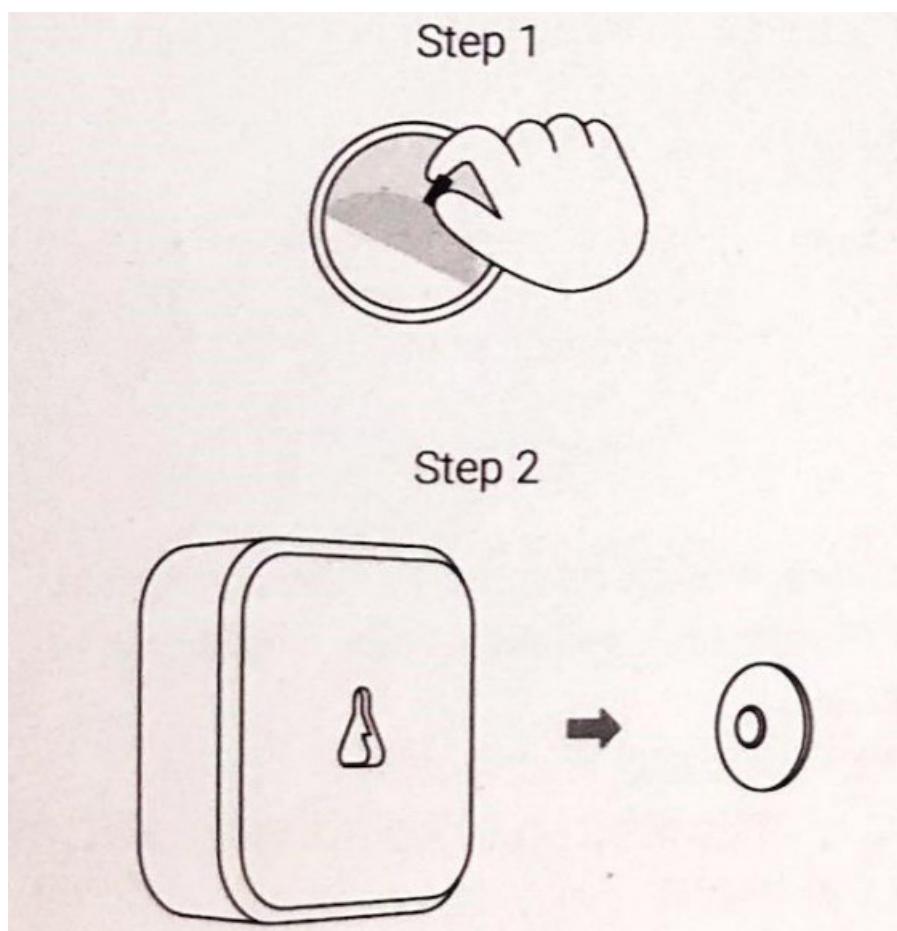
Press the button on the top of the product, and the network signal will show on the display:



- To elongate the standby time, the product will connect the network periodically instead of connecting constantly. The network signal indicator will disappear when the product is not connected to the network.
- You can configure the uploading interval of the product in Qingping IOT app. Please check 'Connecting Qingping IOT App' for more details.

Hang the Product

Inside the package, you can find a wall sticker. Remove the cover film and stick it on the wall or other surface you have chosen. Hang the product on the sticker afterwards:



Restore Factory Settings

1. To reset the product, press and hold the top button for 6 seconds to shut down the device first.
2. Make sure your device is off. Press and hold the top button until the device turns on and off again, which means that the restoration of factory settings has been completed.

Sensor Type & Operating Range


Sensor Type	Operating Range
Temperature	-20 – 50°C -30 — 55°C (CGP23W)
Humidity	0 — 99%RH (non-condensing environment)
CO2 (CGP22C)	400 — 9999 ppm
Air Pressure (CGP23W)	30 — 125 kPa

Specifications

Weight: 129 g

Size: 77 x 77 x 28 mm (Wall sticker not included)

Screen size: 61 x 49 mm

Wi-Fi: 802.11 b/g/n 2.4GHz
Bluetooth: BLE 5.0
Battery: Lithium battery
Power port: USB-C
Power input: 5V  1A
Contain FCC ID: 2AC7Z-ESPWROOM02D

Attention

- Do not block the vent holes of the sensors.
- This product is not waterproof or dust-proof.
- Do not throw the product with the battery into the fire to avoid an explosion.
- Do not disassemble the product by yourself to avoid injury.

FAQ

Question/ Problem	Answer/Solution
Readings inaccurate	1.When the environment changes drastically, for example, after just moved from outdoor to indoor, it needs about 30 minutes for the readings to approach the actual values of the new environment. 2.Check if the vent holes of the product are clogged. If they are clogged, please clean them carefully, and avoid damaging the sensors.
No content shows on the screen	Please try long-pressing the product's button to turn it on, if it cannot be turned on, please charge it.
Cannot add the product in mobile app	If you use an Android phone, please allow the app to access location in the system settings and turn on the location service. (Scanning Bluetooth devices requires the 'Location' permission on Android.)
When powered by the battery, Qingping CO2 & Temp & RH Monitor (CGP22C) always shuts down automatically after a while	Power consumption of measuring CO2 is relatively high. To save battery power, the product will automatically shut down after a period of inactivity by default. You can add the product to the 'Qingping 10T' app, and change the interval of CO2 measurement, the timing of automatic shutdown, etc. Please refer to 'Connecting Qingping IoT App' section of this manual.

Error Code

Error Code	Meaning and Solution
E1	The environment exceeded the sensor measurement range.
E2	The sensor is malfunctioning.

Performance Faults

Unable to display readings properly.
Unable to charge.
The sensors are not working properly.
Unable to connect to wireless network.

Warranty

In the countries and regions where Qingping Technology (Beijing) Co., Ltd. has established branches or after-sales service centers, we provide a 1-year limited warranty service for the locally sold product.. The warranty service terms are:

1. Within 7 days from the date of the receipt, if the product has faults listed in the “Performance Faults”, after the faults are confirmed by our after-sales service department, the customer can have a refund or a replacement of the product for free.
2. From the 8th to the 15th day after the receipt, if the product has faults listed in the “Performance Faults”, after the faults are confirmed by our after-sales service department, the customer can have a replacement or repair service for free.
3. Within 12 months from the date of receipt, if the product has faults listed in the “Performance Faults”, after the faults are confirmed by our after-sales service department, the customer can have the maintenance service for free.

In countries or regions where Qingping Technology (Beijing) Co., Ltd. has not established a branch or after-sales service center, please contact the local seller if you have any quality problems.

Non-warranty

1. Unauthorized repair, misuse, collision, negligence, abuse, liquid injection, accident, alteration, improper use of accessories not originally supplied with this product.
2. The warranty period has expired
3. Damage caused by force majeure.
4. The situation does not meet the fault listed in the Performance Faults.

FCC Warning

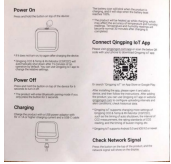
This device complies with Part 15 of the FCC Rules. Operation is subject to the following two conditions: (1) This device may not cause harmful interference, and (2) this device must accept any interference received, including interference that may cause undesired operation.

Any changes or modifications to this unit not expressly approved by the party responsible for compliance could void the user's authority to operate the equipment.

This equipment has been tested and found to comply with the limits for a Class B digital device, pursuant to part 15 of the FCC Rules. These limits are designed to provide reasonable protection against harmful interference in a residential installation. This equipment generates, uses and can radiate radio frequency energy and, if not installed and used in accordance with the instructions, may cause harmful interference to radio communications. However, there is no guarantee that interference will not occur in a particular installation. If this equipment does cause harmful interference to radio or television reception, which can be determined by turning the equipment off and on, the user is encouraged to try to correct the interference by one or more of the following measures:

1. Reorient or relocate the receiving antenna.
2. Increase the separation between the equipment and receiver.
3. Connect the equipment into an outlet on a circuit different from that to which the receiver is connected.
4. Consult the dealer or an experienced radio/TV technician for help.

Documents / Resources



[qingping CGP22C C02 and Temp and RH Monitor](#) [pdf] User Manual
CGP22C C02 and Temp and RH Monitor, CGP22C, C02 and Temp and RH Monitor, Temp and RH Monitor, RH Monitor, Monitor

References

- [qingping Qingping](#)
- [qingping qingping](#)

Manuals+