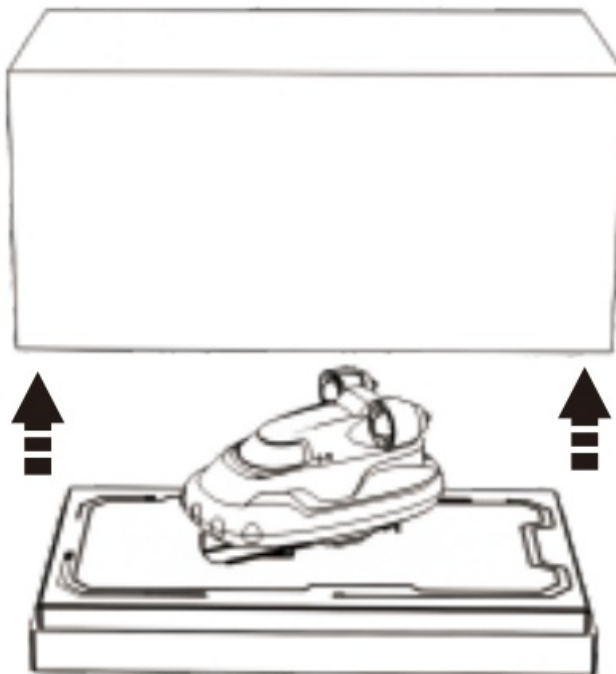


## Qing Tian Y888 Remote Control Unit Instruction Manual

[Home](#) » [Qing Tian](#) » Qing Tian Y888 Remote Control Unit Instruction Manual 

### Qing Tian Y888 Remote Control Unit



## Contents

### 1 PREPARE

### 2 REMOTE CONTROL

### 3 CHARGE

### 4 OPERATION

### 5 CAUTION

### 6 Federal Communication Commission Interference Statement

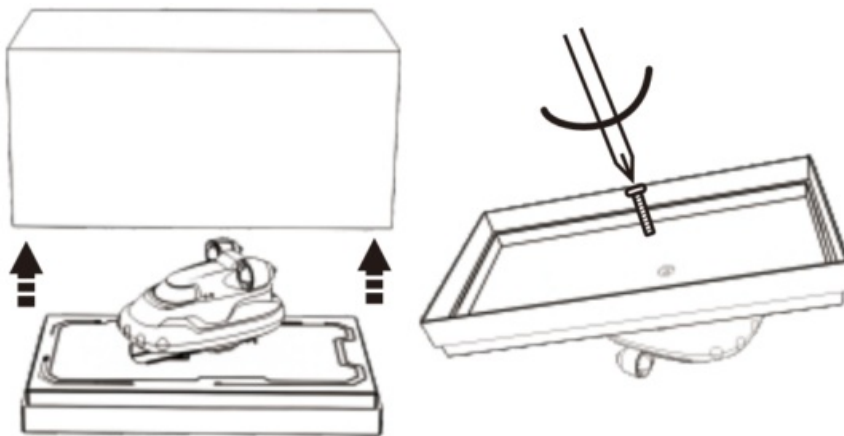
### 7 Documents / Resources

#### 7.1 References

### 8 Related Posts

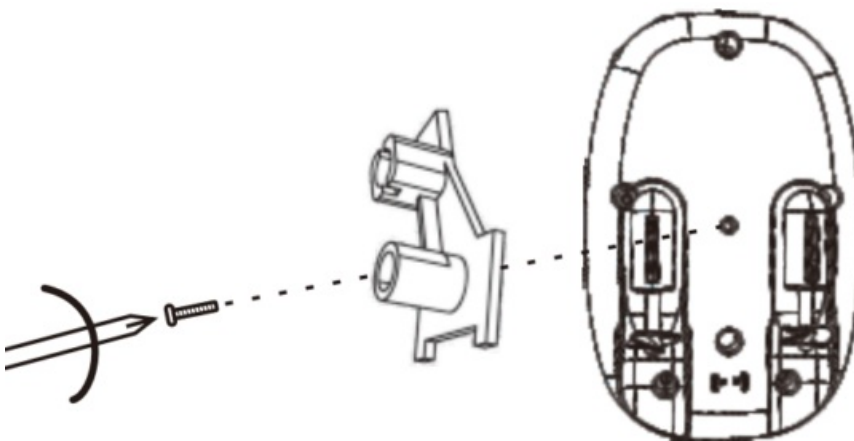
## PREPARE

1. Tear off the sticker, take out the transparent cover, use a cross screwdriver to unscrew the plastic base screw~ counterclockwise, and remove the racing boat.



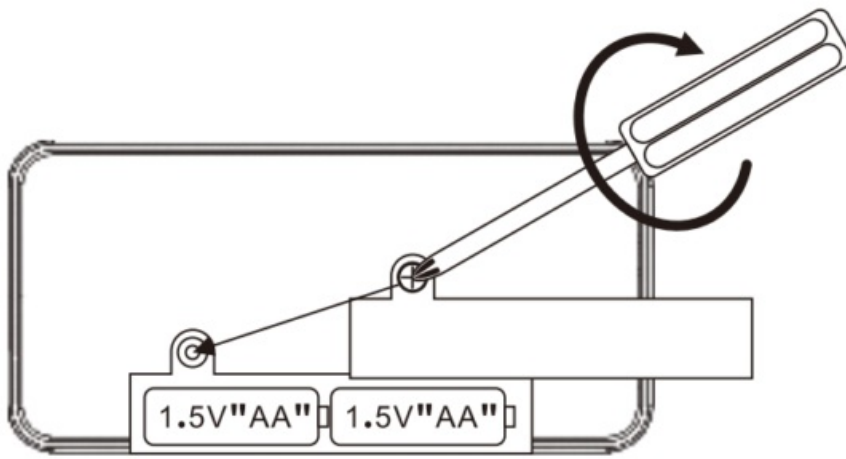
(the fittings have to be removed before the boat can be used).

2. Use a cross screwdriver to unscrew the screws which holding the racing boat accessory counterclockwise, and remove the accessory.



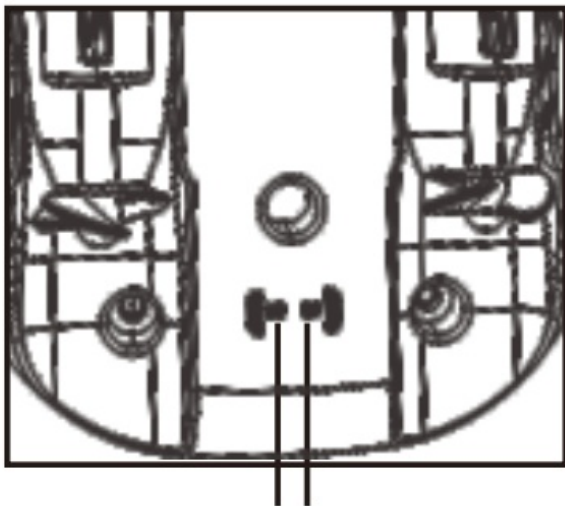
## REMOTE CONTROL

Use a cross screwdriver to unscrew the battery cover screws counterclockwise. The remote controller uses 2 pieces of 5# batteries.

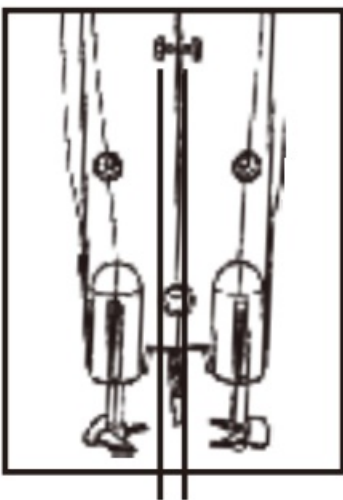


(Chart 1)

CONTACT POINT (ELECTRIFY BY PUTTING IN WATER)



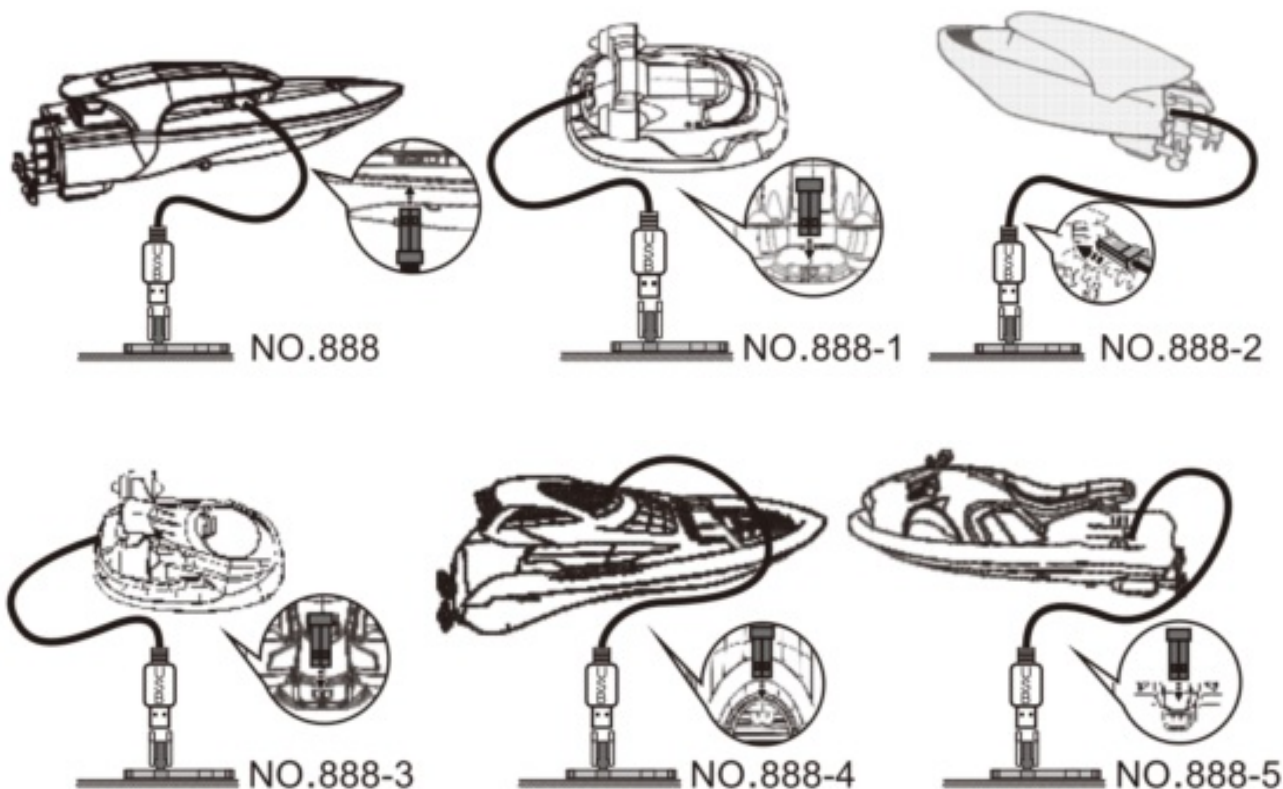
CONTACT POINT (ELECTRIFY BY PUTTING IN WATER)



## CHARGE

Take out the USB charging plug, plug the charging plug into the charging interface of the boat, the charging

indicator light is on, indicating that the charging is in progress. When the charging indicator light automatically goes off, indicating that the charging is complete, after full charge, you can play for about 8-12 minutes.



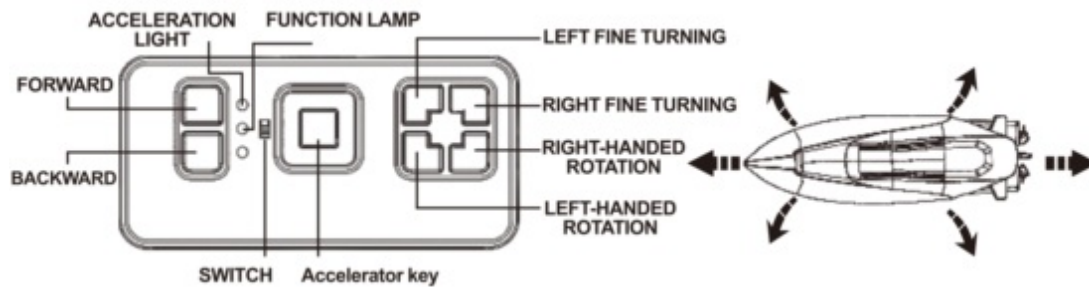
## OPERATION

### 1. Function of controller button

1. Turn on the controller, the function indicator light will keep flashing and will be in the state of frequency matching. When the boat is energized (see chart 1), the frequency matching will be completed and the function indicator light will be OFF. Press the function key, the indicator light will be ON, release the function key, the indicator light will be OFF.
2. The boat can go forward/backward when the forward/backward button is pressed.
3. When pressing the forward button and holding down the left/right turn button, the boat can make forward left/right turn.
4. Press the left turn button alone, the boat will turn left on the spot. Press the right turn button alone, the boat will turn right on the spot.
5. When pressing the left fine turning/right fine turning button, you can adjust the linear performance of the boat.
6. When the remote control sounds for three prompts, you can press the acceleration button, and the boat will activate 100% kinetic energy and sprint in a straight line. When the remote control sounds for two prompts, the acceleration function ends, and you can only accelerate again until the next three prompts sound.
7. When the remote control prompts the sound alarm for 10-20 seconds, the ship will be in low power state, please charge the ship in time.

When in use, turn on the power switch of the controller first, then put the boat into the water and contact the water at the contact point. At this point, the boat is energized. The indicator light of the boat flashes to indicate that it has been energized. Do not place your hands near the propeller to prevent injury when the propeller is rotating at high

speed, and make sure there are no obstacles around the propeller. If not in use, take the boat out of water, dry it with a cloth and put it away. After the boat is dried off from the water, the power is cut off and the propeller stops spinning.



## CAUTION

- The boat uses 3.7V rechargeable lithium battery(built-in battery),the controller uses 2X1.5V "AA" batteries;
- Pay attention to polarity when installing or replacing batteries;
- Not recharge non-rechargeable batteries
- Adult supervision is required when recharging batteries
- Never mix different types of batteries, or new and used batteries
- Power terminals should not be short-circuited
- When the speed of boat slows down, it means that the power of the boat is insufficient, Please charge the boat according to the above methods.
- When the battery of the remote control is low and the indicator light is dark or not bright, Please replace the new battery
- When charging, please look for the charging plug and charging interface direction
- When the remote control is not in use for a long time, Please remove the batteries from the remote controller.
- When the boat is not in use for a long time, please charge the boat before storing it. This will prolong the battery life of the boat.
- Unpacking is carried out under the guidance of adults
- Keep this manual for future reference

## Federal Communication Commission Interference Statement

This device complies with Part 15 of the FCC Rules. Operation is subject to the following two conditions: (1) This device may not cause harmful interference, and (2) this device must accept any interference received, including interference that may cause undesired operation.

This equipment has been tested and found to comply with the limits for a Class B digital device, pursuant to Part 15 of the FCC Rules. These limits are designed to provide reasonable protection against harmful interference in a residential installation. This equipment generates, uses and can radiate radio frequency energy and, if not installed and used in accordance with the instructions, may cause harmful interference to radio communications. However, there is no guarantee that interference will not occur in a particular installation. If this equipment does cause harmful interference to radio or television reception, which can be determined by turning the equipment off and on, the user is encouraged to try to correct the interference by one of the following measures:

- Reorient or relocate the receiving antenna.
- Increase the separation between the equipment and receiver.
- Connect the equipment into an outlet on a circuit different from that to which the receiver is connected.
- Consult the dealer or an experienced radio/TV technician for help.

**FCC Caution:** Any changes or modifications not expressly approved by the party responsible for compliance could void the user's authority to operate this equipment.



## Documents / Resources



[Qing Tian Y888 Remote Control Unit](#) [pdf] Instruction Manual  
Y888, Y888 Remote Control Unit, Remote Control Unit, Control Unit, Unit

## References

- [User Manual](#)

### Manuals+, Privacy Policy

This website is an independent publication and is neither affiliated with nor endorsed by any of the trademark owners. The "Bluetooth®" word mark and logos are registered trademarks owned by Bluetooth SIG, Inc. The "Wi-Fi®" word mark and logos are registered trademarks owned by the Wi-Fi Alliance. Any use of these marks on this website does not imply any affiliation with or endorsement.