

Contents [[hide](#)]

[1 Qbic TDD-1000-C Scheduler Docking Station](#)

[2 Contents](#)

[3 Port Reference](#)

[4 Installation](#)

[5 Cable Clamp](#)

[6 Documents / Resources](#)

[6.1 References](#)

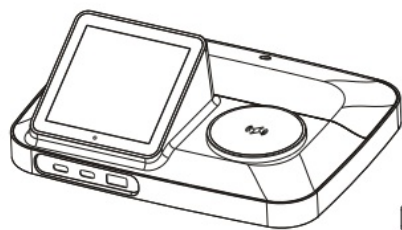


Qbic TDD-1000-C Scheduler Docking Station



This quick guide will help you complete the installation quickly.

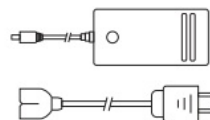
Contents



TDD-1000-C



USB-C cable



Adapter and
Power Cord
(Provided by regions)



Adhesive tape *3

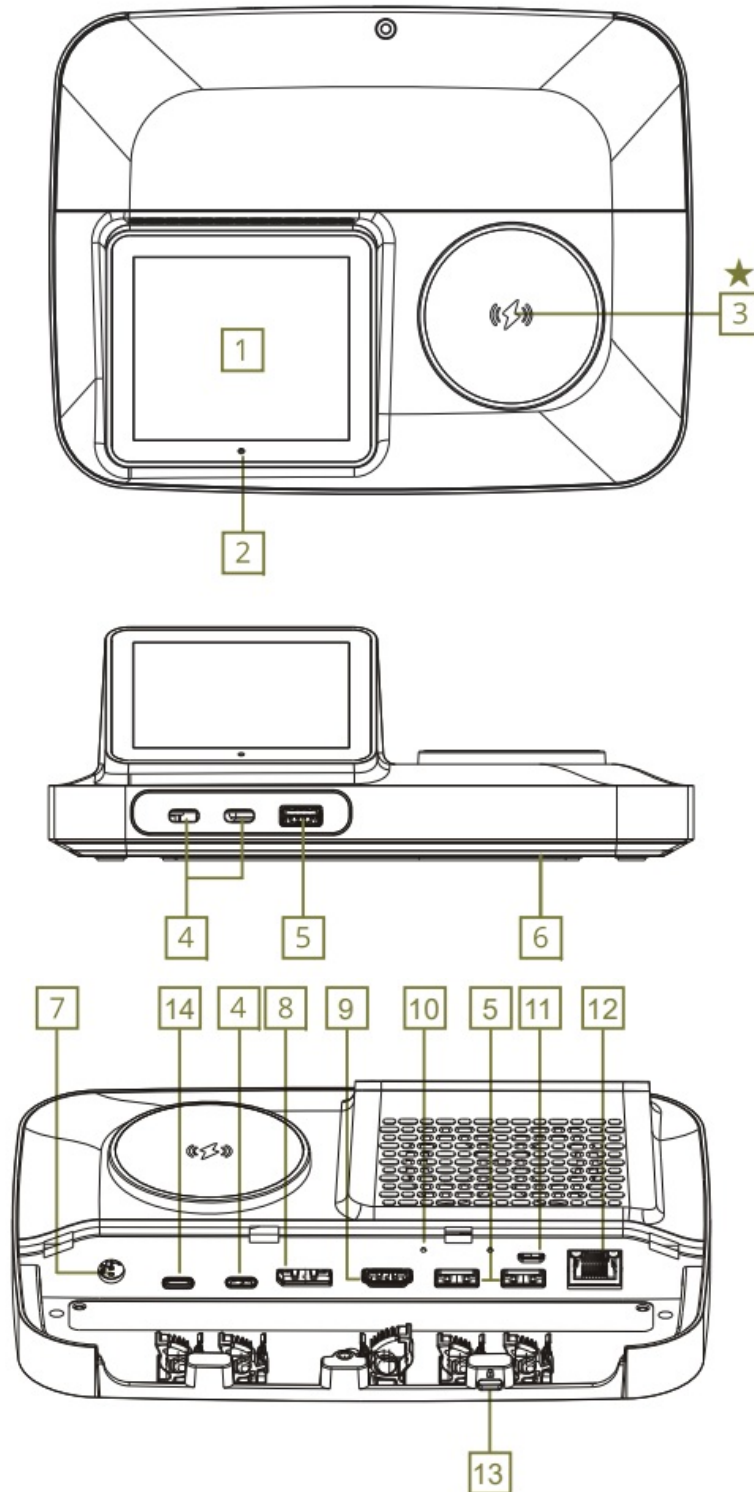
Port Reference

Only supports Qi2-compatible devices.

Caution

- Remove all metal objects from the back of your phone before charging.
- Do not place credit cards on the charging pad to avoid damage or demagnetization.

1. Touch Display
2. HDMI
3. Sensor
4. LED indicator
5. Kensington Lock Slot
6. USB-C Upstream 60W
7. MAX(20V/3A)
8. Wireless Charger DC 21V
9. 15W (9V/1.67A)
10. USB-C(5V/1.5A)
11. Display Port
12. Reset
13. Micro USB for ADB
14. RJ45

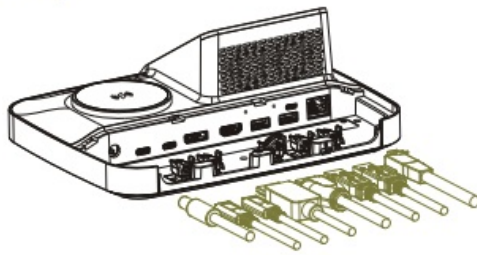


Installation

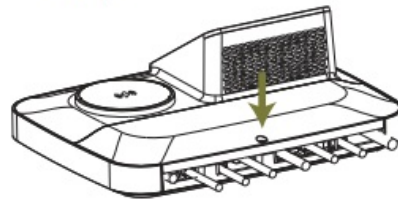
Free-Standing Mount

1. Connect and secure the cables with the cable clamp. The device will Power on when DC is applied.

Step 1



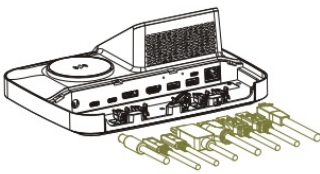
Step 2



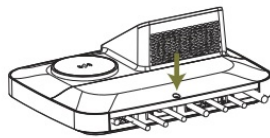
2. Install the I/O cover and Secure it with the included M3xL6 screw.

Adhesive Mount

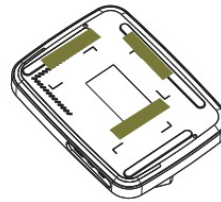
Step 1



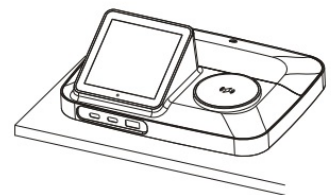
Step 2



Step 3



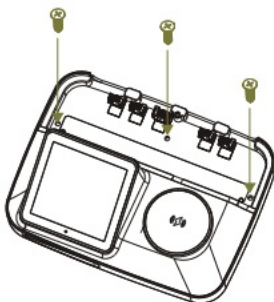
Step 4



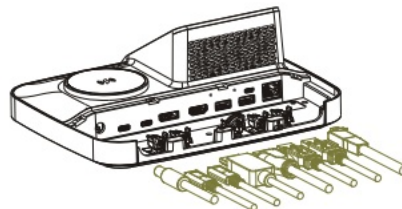
1. Unscrew the I/O cover. Connect and secure the cables with the cable clamp. The device will power on when DC is applied.
2. Install the I/O cover and Secure it with the included M3xL6 screw.
3. Attach adhesive tape to the marked areas on the bottom of the device. Peel off the adhesive tape and secure the device to the surface.

Table Mount

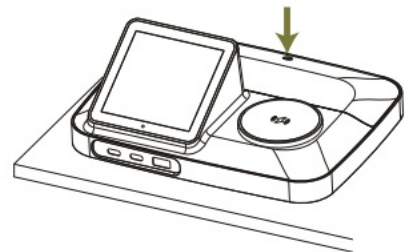
Step 1



Step 2



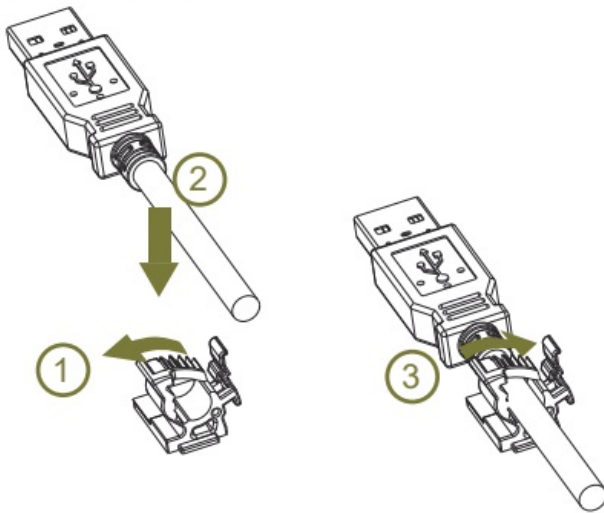
Step 3



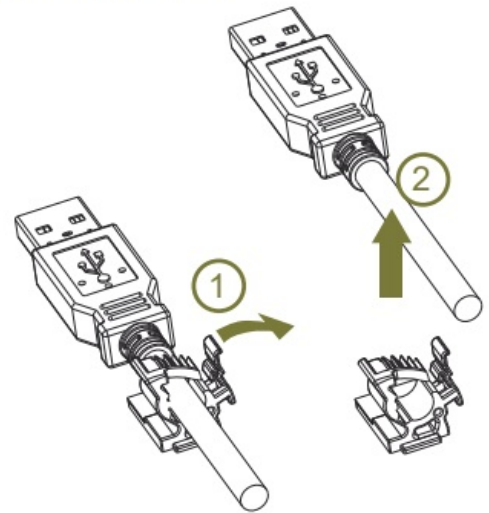
1. Unscrew the I/O cover. Secure the device to the table with 3*M4 screws (not included).
2. Connect and secure the cables with the cable clamp. The device will power on when DC is applied.
3. Install the I/O cover and secure it with the included M3xL6 screw.

Cable Clamp

Secure Cable



Release Cable



Safety and Compliance Information

WARNING

Changes or modifications to this unit not expressly approved by the party responsible for compliance could void the user's authority to operate the equipment.


NOTE

This equipment has been tested and found to comply with the limits for a Class A digital device, pursuant to part 15 of the FCC Rules. These limits are designed to provide reasonable protection against harmful interference when the equipment is operated in a commercial environment. This equipment generates, uses, and can radiate radio frequency energy and, if not installed and used according to the instruction manual, may cause harmful interference to radio communications. Operation of this equipment in a residential area is likely to cause harmful interference, in which case the user will be required to correct the interference at his own expense.

However, there is no guarantee that interference will not occur in a particular installation. If this equipment does cause harmful interference to radio or television reception, which can be determined by turning the equipment off and on, the user is encouraged to try to correct the interference by one or more of the following measures:

- Reorient or relocate the receiving antenna.
- Increase the separation between the equipment and receiver.
- Connect the equipment to an outlet on a circuit different from that to which the receiver is connected.
- Consult the dealer or an experienced radio/panel PC technician for help.

This device complies with Part 15 of the FCC Rules. Operation is subject to the following two conditions:

1. This device may not cause harmful interference, and
2. This device must accept any interference received, including interference that may cause undesired operation. 

Correct Disposal of this product. This marking indicates that this product should not be disposed of with other household waste throughout the EU. To prevent possible harm to the environment or human health from uncontrolled waste disposal, recycle it responsibly to promote the sustainable reuse of material resources. To return your used device, please use the return and collection systems or contact the retailer where the product was purchased. They can take this product for environmentally safe recycling.

“FCC & CE RF Radiation Exposure Statement Caution

To maintain compliance with the FCC & CE’s RF exposure guidelines, place the product at least 20cm from nearby persons.” This device contains licence-exempt transmitter(s)/receiver(s) that comply with Innovation, Science and Economic Development Canada’s licence-exempt RSS(s).

Operation is subject to the following two conditions

This device may not cause interference.

This device must accept any interference, including interference that may cause undesired operation of the device.

Indoor Mobile Radio

To comply with FCC/IC RF exposure limits for the general population / uncontrolled exposure, the antenna(s) used for this transmitter must be installed to provide a separation distance of at least 20 cm from all persons and must not be co-located or

operating in conjunction with any other antenna or transmitter. For products available in the USA/Canada market, only channels 1—11 can be operated. Selection of other channels is not possible.

For LE-LAN devices

1. The device for operation in the band 5150—5250 MHz is only for indoor use to reduce the potential for harmful interference to co-channel mobile satellite systems.
2. The maximum antenna gain permitted for devices in the bands 5250-5350 MHz and 5470-5725 MHz shall be such that the equipment complies with the e.i.r.p. limit.

Declaration of Conformity

This device complies with the requirements set out in the Council Directive on the Approximation of the Laws of the Member States relating to Electromagnetic Compatibility (2014/30/EU), Low-voltage Directive (2014/35/EU), Erp Directive (2009/125/EC), RoHS directive (2011/65/EU), and Radio Equipment Directive (2014/53/EU).

This product has been tested and found to comply with the harmonized standards for Information Technology Equipment, these harmonized published under the Directives of the Official Journal of the European Union.

Warning: When a peripheral device is connected to a PC USB-C port and triggers a 20Vdc output voltage, this peripheral device requires a fireproof enclosure. Qbic is not responsible for damage arising from the failure to cause damage by the use of a third-party component or product that does not meet the Product's specifications.

Power Adapter information

- Model: YWI 80A2-2100858
- Input: 100-240V 2.5A 50-60Hz
- Output: 21V 8.58A

NOTE: Operating Temperature: 0—400 °C

Qbic Technology Co., Ltd.

26F.-12, No 99, Sec. 1, Xintai 5th Rd., Xizhi Dist., New Taipei City 22175, Taiwan

(R.O.C)

Tel: 886-2-2697-2000 / FAX: 886-2-2697-2868



QTD08001ENQ02

⚠CAUTION

Risk of explosion if fra freshattery is replaced by an incorrect type. Wait one-half hour after switching off before handling parts.




Support site



QSG download link

Documents / Resources

	Qbic TDD-1000-C Scheduler Docking Station [pdf] User Guide TDD1000C, 2AF82-TDD1000C, 2AF82TDD1000C, TDD-1000-C Scheduler Docking Station, TDD-1000-C, Scheduler Docking Station, Docking Station, Station
---	--

References

- [User Manual](#)

📁 Qbic

🔍 2AF82-TDD1000C, 2AF82TDD1000C, Docking Station, Qbic, Scheduler Docking Station, Station, TDD-1000-C, TDD-1000-C Scheduler Docking Station, TDD1000C

Leave a comment

Your email address will not be published. Required fields are marked *

Comment *

Name

Email

Website

☐ Save my name, email, and website in this browser for the next time I comment.

Post Comment

Search:

e.g. whirlpool wrf535swhz

Search

[Manuals+](#) | [Upload](#) | [Deep Search](#) | [Privacy Policy](#) | [@manuals.plus](#) | [YouTube](#)

This website is an independent publication and is neither affiliated with nor endorsed by any of the trademark owners. The "Bluetooth®" word mark and logos are registered trademarks owned by Bluetooth SIG, Inc. The "Wi-Fi®" word mark and logos are registered trademarks owned by the Wi-Fi Alliance. Any use of these marks on this website does not imply any affiliation with or endorsement.