



QAZQA 105841 Java Moderne Tafellamp Instruction Manual

[Home](#) » [QAZQA](#) » QAZQA 105841 Java Moderne Tafellamp Instruction Manual 

QAZQA 105841 Java Moderne Tafellamp
Instruction Manual

INSTRUCTION MANUAL

(GB) Safety Precautions



220-240V~
50Hz



Max. ϕ 35mm
GU10
Max. 35W

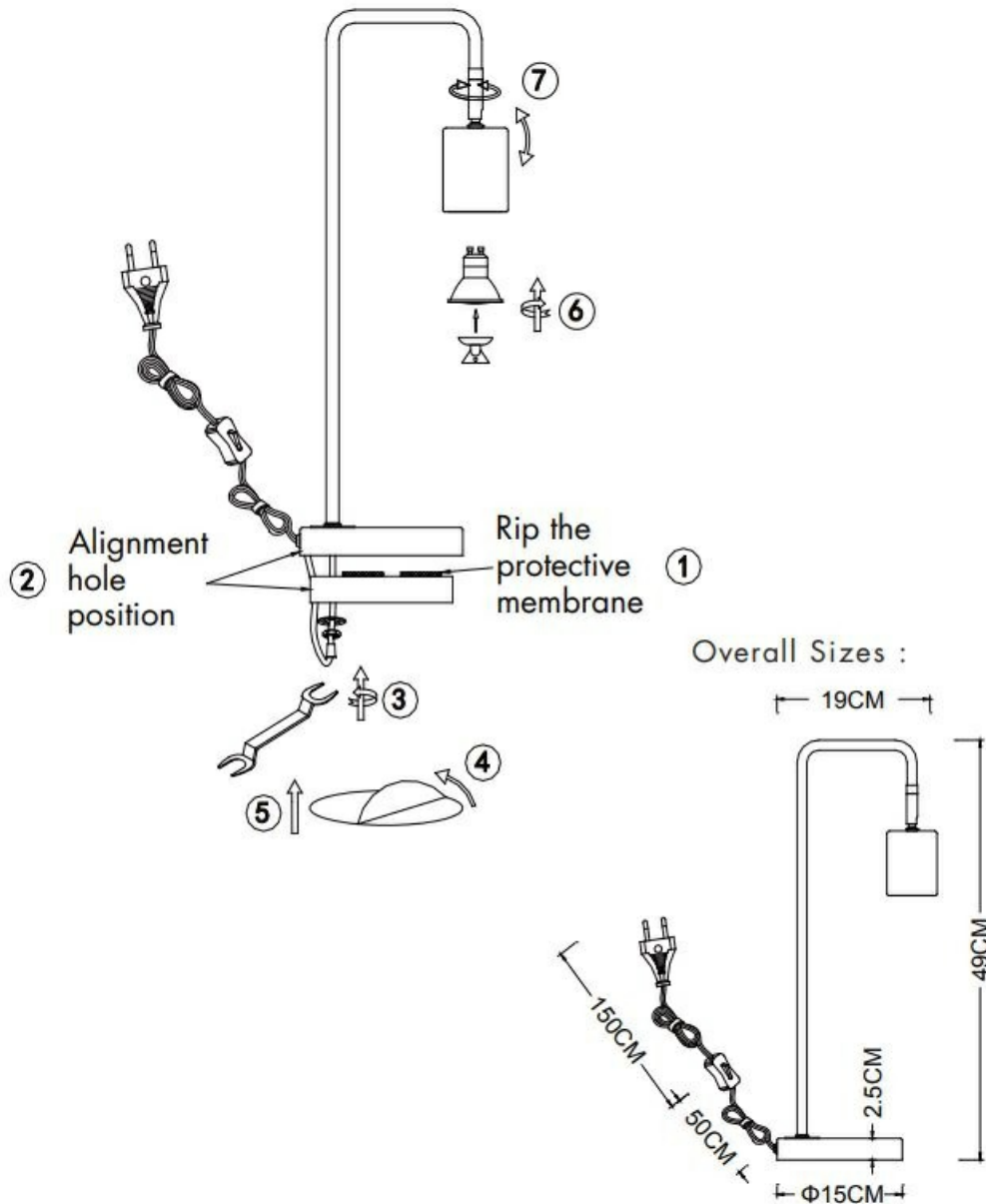
IP20



UK
CA



Java TL
105841/105842



Contents

[1 SAFETY INSTRUCTION](#)

[2 Documents /
Resources](#)

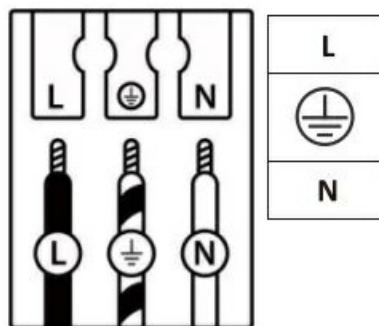
[2.1 References](#)

SAFETY INSTRUCTION

Please study the instruction manual and below information carefully before installing or using this product.
Please keep this user manual for further reference

1. The luminaires may only be installed by authorized and qualified technicians according the valid regulations for electrical installation.
2. Maintenance of the luminaires is limited to their surfaces. During maintenance no moisture can come into contact with any areas of the terminal connections or voltage control parts.
3. The electrical supply must be switched off at the outset, preferably by means of a switch in the distribution box, before any installation, maintenance or repair work is undertaken.
4. Exterior lighting must not be installed during rain.
5. Take account of the minimal separation distance from other objects and the room required around the fitting.
6. If in any doubt, consult a professional, taking local installation requirements into account. Some countries stipulate that lighting may be installed only by registered installers.
7. Clamping screws in electrical connections must be adequately tightened. This is particularly the case with 12V low voltage conductors.
8. Clean with a clean, dry cloth or brush, use no solvents or abrasives. Avoid dampness on all electrical components
9. Take account of all available technical information.
10. Meaning of symbols:

This luminaire cannot be disposed together with normal domestic waste in standard rubbish can, but you have to bring it to a staging area for electrical waste
11. Take note of the symbols when connecting wires:



Live conductor
Earth conductor
Neutral conductor

FittinQ B.V.

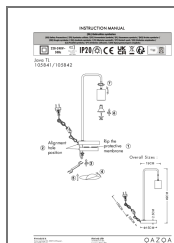
Smaragdweg 52, 5527 LB Hapert,
The Netherlands
www.qazqa.nl

FittinQ LTD

55 Baker Street,
London, W1U 7EU
United Kingdom

QAZQA

Documents / Resources



[QAZQA 105841 Java Moderne Tafellamp](#) [pdf] Instruction Manual
105841 Java Moderne Tafellamp, 105841, Java Moderne Tafellamp, Moderne Tafellamp, Tafella
mp

References

- [QAZQA - Quite Unique | QAZQA](#)
- [User Manual](#)

[Manuals+](#), [Privacy Policy](#)

This website is an independent publication and is neither affiliated with nor endorsed by any of the trademark owners. The "Bluetooth®" word mark and logos are registered trademarks owned by Bluetooth SIG, Inc. The "Wi-Fi®" word mark and logos are registered trademarks owned by the Wi-Fi Alliance. Any use of these marks on this website does not imply any affiliation with or endorsement.