



Q-TRAN SCENE App User Guide

[Home](#) » [Q-TRAN](#) » Q-TRAN SCENE App User Guide 

Contents

- 1 Q-TRAN SCENE App
- 2 DOWNLOAD SCENE
- 3 PREP
- 4 HOW TO RESET THE APP
- 5 CREATING A SCENE
- 6 CREATING AN AUTOMATION
- 7 Documents / Resources
 - 7.1 References
- 8 Related Posts



Q-TRAN SCENE App



YOUR LIGHTING, YOUR WAY

Bring simplified control into your commercial and residential spaces with SCENE, Q-Tran's first-ever mobile app. Paired with our Bluetooth or Wi-Fi-enabled dongles, SCENE app allows you to control your Q-Tran LED lighting straight from your iOS or Android device – simplifying installation, programming, and maintenance.

SCENE is compatible with Amazon Alexa and Google Assistant enabled devices. Control your lighting your way simply by using voice commands to create smart LED lighting that works for you.

DOWNLOAD SCENE

Go to the App Store or Google Play Store and download the app. Make sure your phone is connected to your Wi-Fi network before getting started.

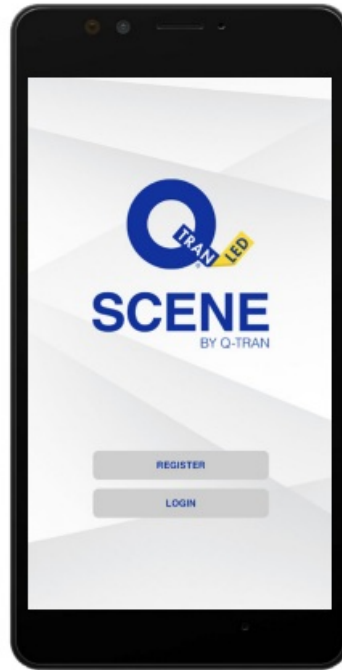


For technical support, call (203) 367-8777 and select option #4 or email sales@q-tran.com.

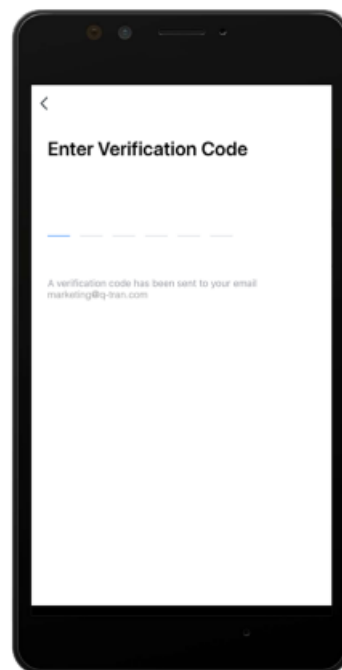
PREP

- Refer to the label on your dongle to determine if connection is Bluetooth or Wi-Fi.
- Enable Bluetooth or be on the same Wi-Fi network depending on the dongle type.
- Do not dim power supply.

1. Open the app. Click on “Register” to create a new account using your email address. Accept Wi-Fi and Bluetooth permissions. Enable location services for accurate weather information.

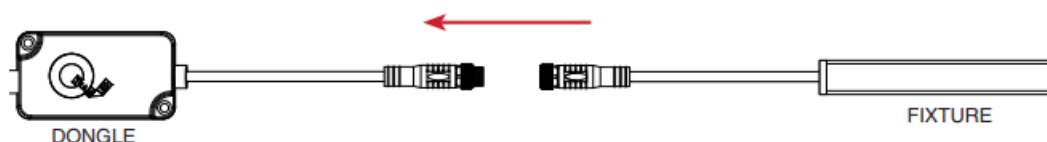


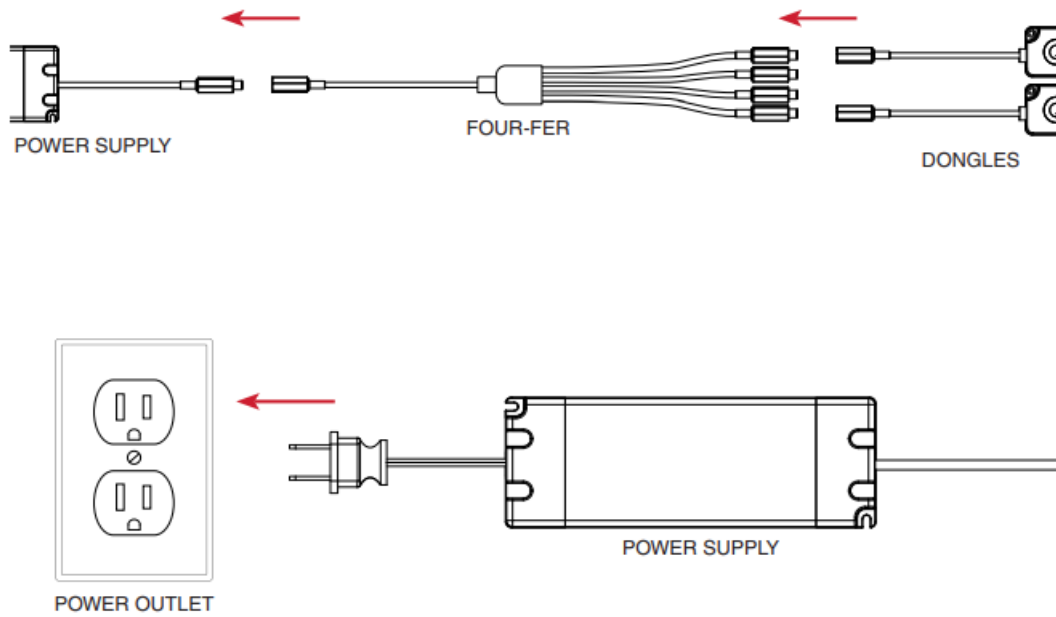
2. Verify your new account using the six digit verification code sent to you via email, and create a password. Passwords must be 6-20 characters, including letters and digits.



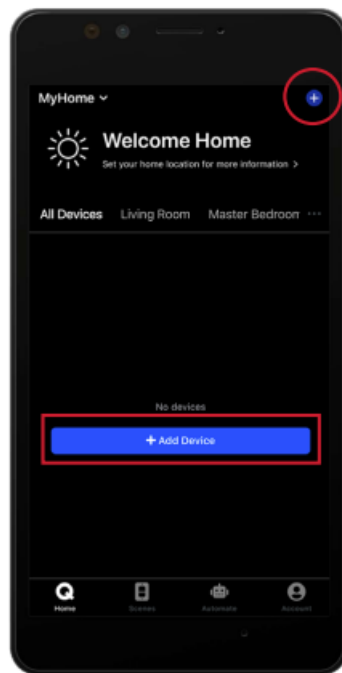
3. Connect the fixture to the dongle.
 - Connect the dongle to the power supply.
 - Plug in the power supply to a power outlet.
 - Do not dim power supply.

Connecting Multiple Dongles

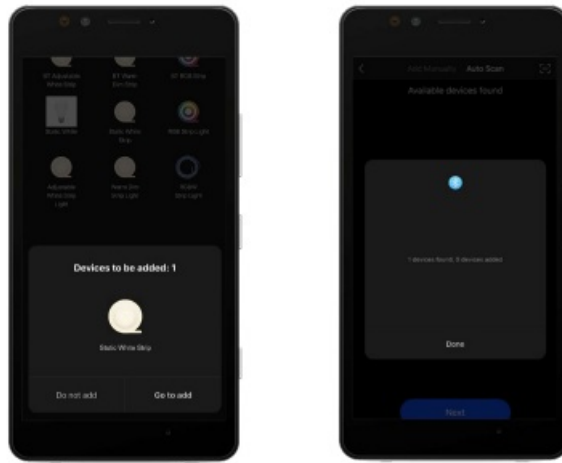




4. Hold down the “Q” button on the dongle to enter connection mode. Your fixture will begin flashing. Add your lighting fixture by clicking “+Add Device” or by clicking the “+” in the top right corner of the home screen.

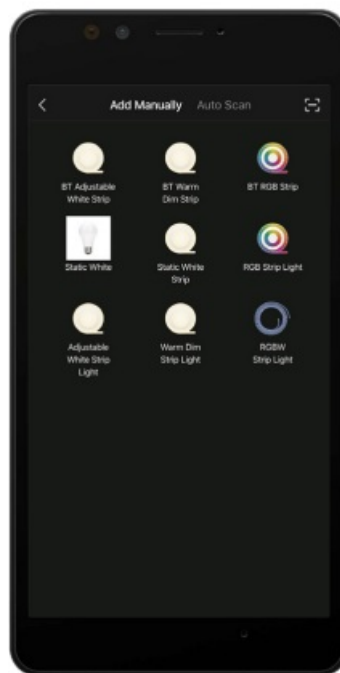


5. **A.** As long as your fixture is flashing, it should be discovered by app automatically. If not discovered, see Step 5B.



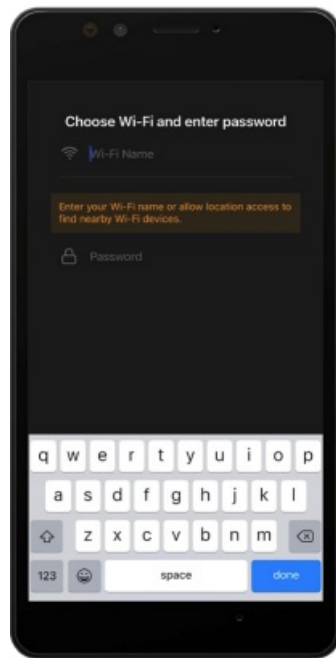
Once connected, see Step 7.

- **B. Manual Mode:**

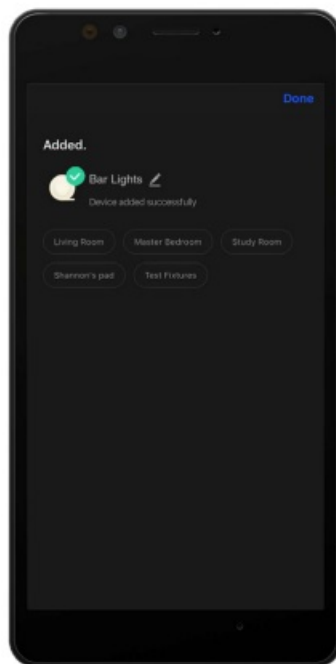


Hold down the “Q” button on the dongle to enter connection mode. Your fixture will start flashing. Select one of the product types from the “Add Manually” screen to connect your product. If connecting a Bluetooth dongle, your fixture will now connect to the app. This may take up to one minute. The range of the Bluetooth connection is approximately 30 feet.

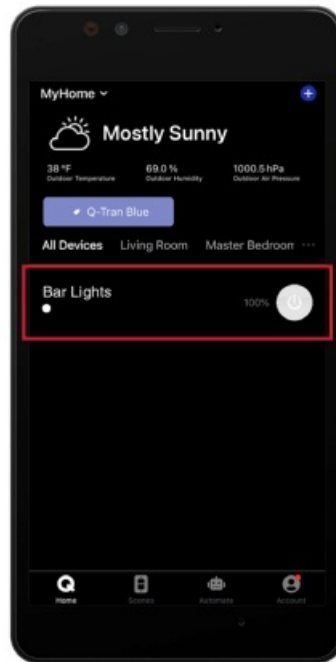
6. If connecting a Wi-Fi dongle, select your Wi-Fi network, enter your Wi-Fi password and click “Next”. Your fixture will now connect to the app. This may take up to one minute.



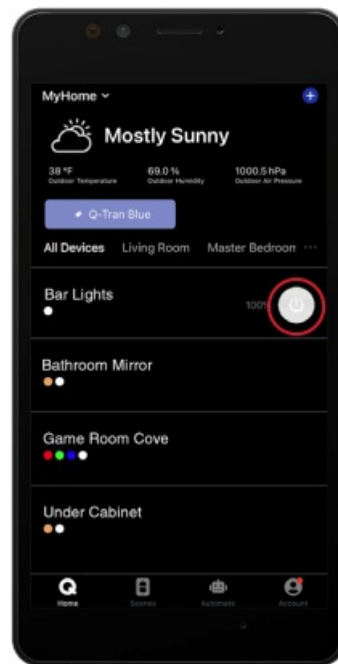
7. Name and assign your fixture to a room and click “Done”. Fixtures can also be assigned to a room from the light settings screen. Additionally the room can be set within each light by pressing the three dots in the top right corner of the SCENE app.



8. Your fixture is now connected and can be found on the home screen of the app.



9. You can now control your lighting fixtures from the home screen. Press the device name to access controls and settings or press the power button on the right to turn fixtures on or off.

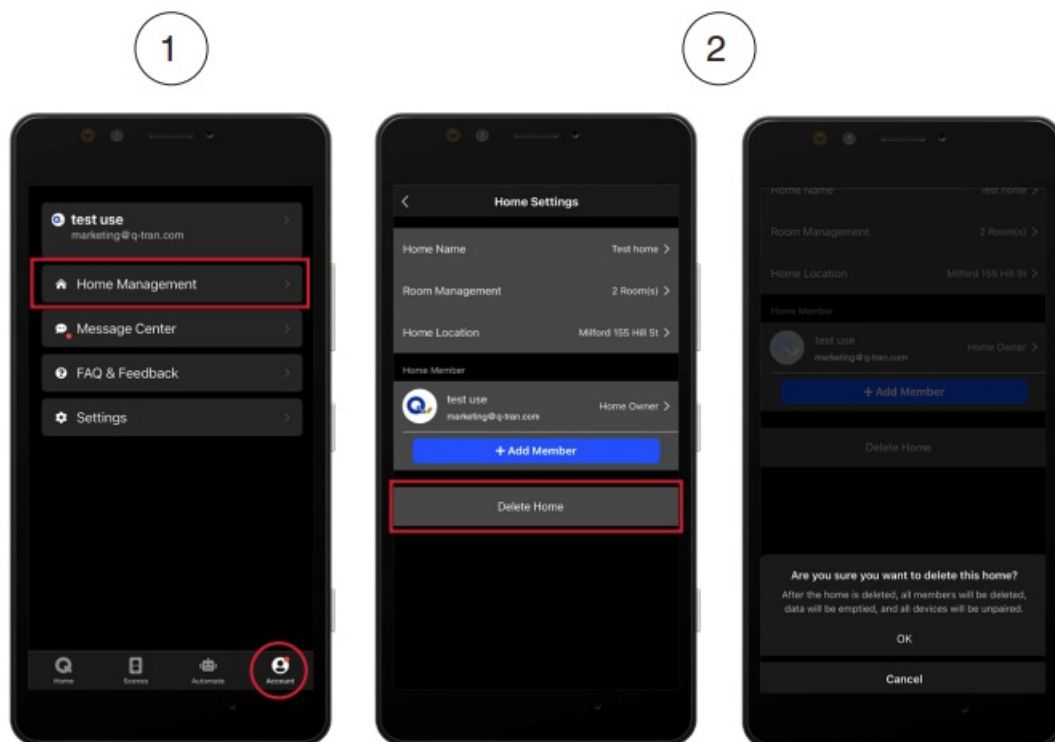


Sample Fixture After Connecting

The Static White control screen can be seen here, by using the slider at the bottom of the screen you can dim the fixture down from 100%. You can also turn the lighting fixture on and off by pressing the Q on the SCENE app.

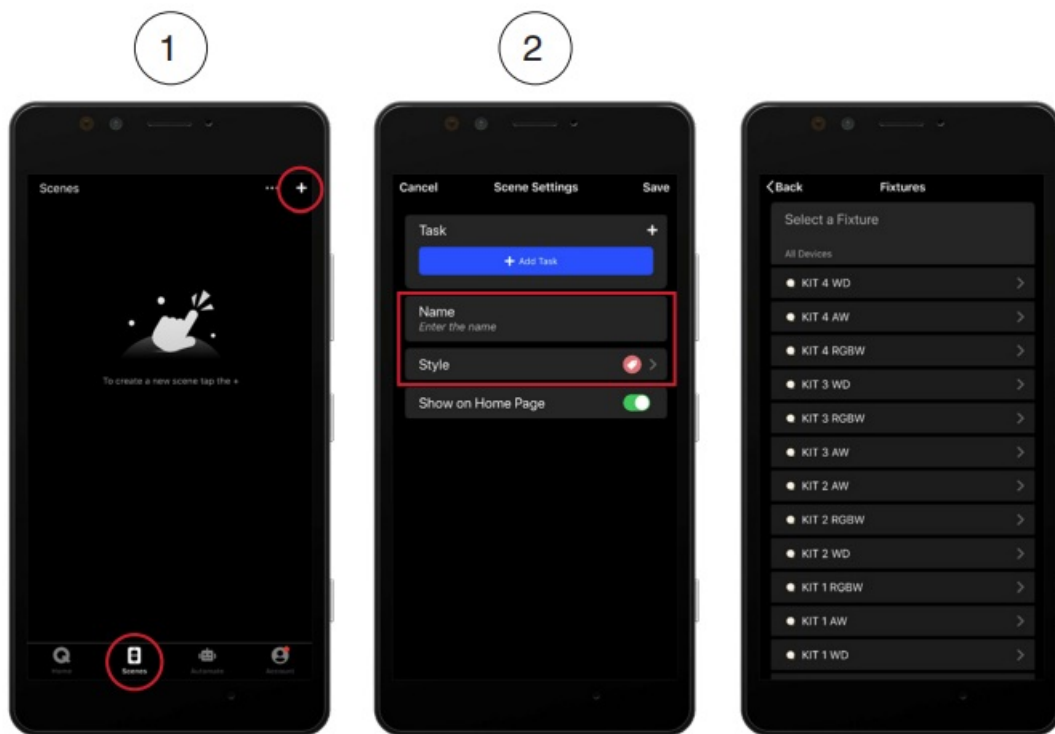


HOW TO RESET THE APP



1. Go to “Account” in the bottom right corner and then to “Home Management”.
2. On the next screen, choose “Delete Home”.
3. Follow Steps 4-9 to begin adding a new lighting fixture to a new home.

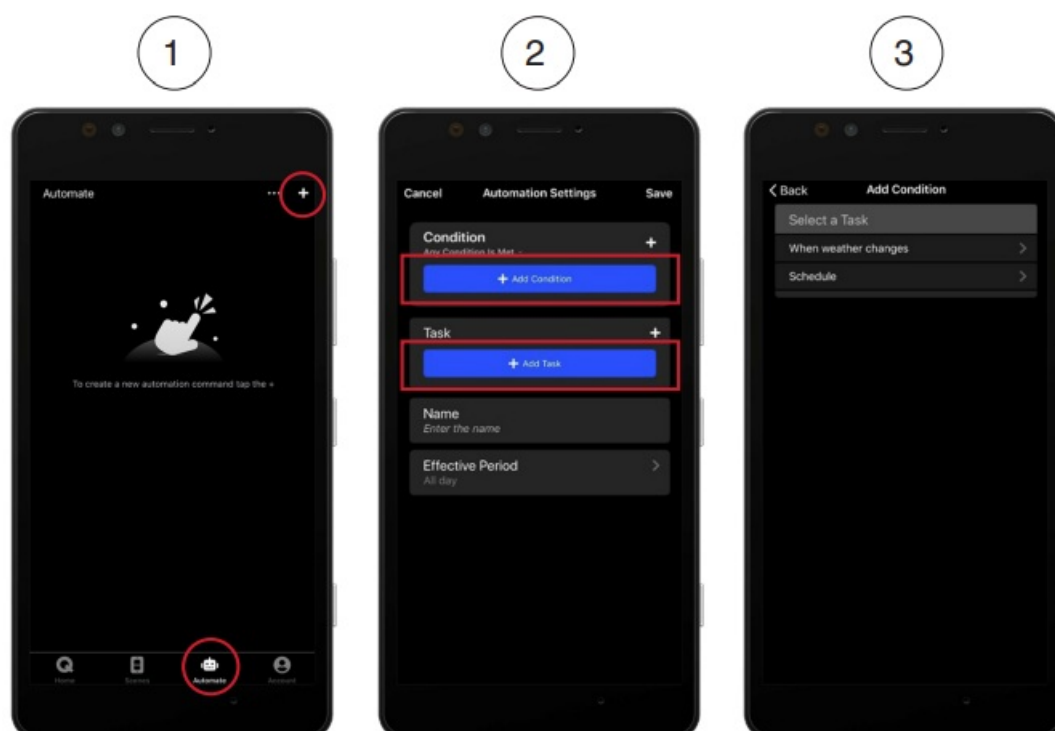
CREATING A SCENE



1. Click the “Scenes” icon from the bottom home screen menu then press the “+” button in the top right of the screen.
2. Add tasks using the “+Add Task” button to add a scene, automation, delay or to control the lighting fixture, select the fixtures and their desired actions.
3. Name your new task, then select “Style” to add an icon or color to customize the action on your home screen and click “Save”.

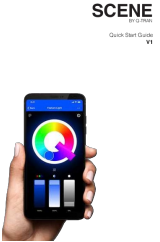
CREATING AN AUTOMATION

Set schedules based on Sunrise/Sunset or a specific time.



1. Click the Automation icon from the bottom menu then press the “+” button in the top right of the screen.
2. Create a new automation by clicking “+ Add Condition” and then select a task, then click a condition, ex. “When weather changes” or “Schedule” to add a new condition to your automation. Add tasks using the “+Add Task” button to add a scene, automation, delay, or control the lighting fixture and select the fixtures and their desired actions.
3. Name your new automation. Select “Effective Period” to set the length of time the automation will stay active, and then click “Save”.

Documents / Resources

	<p>Q-TRAN SCENE App [pdf] User Guide SCENE App, SCENE, App</p>
---	---

References

- [RealNames | A more meaningful email address](#)