



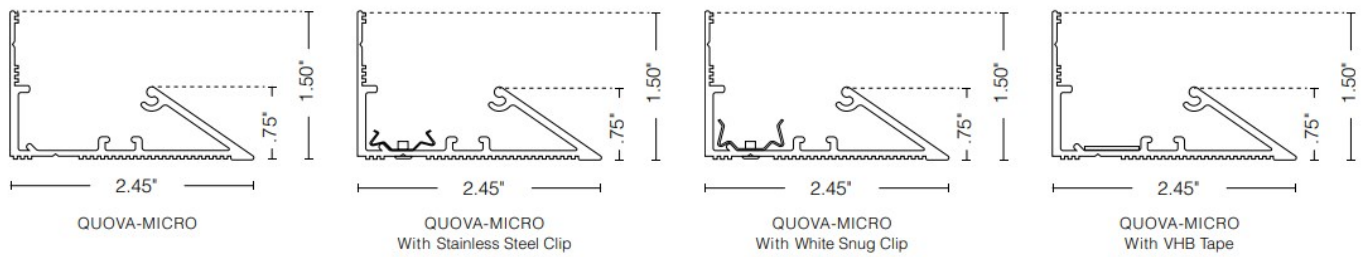
Q-TRAN QUAVO Linear Fixture Instruction Manual

[Home](#) » [Q-TRAN](#) » Q-TRAN QUAVO Linear Fixture Instruction Manual 

Q-TRAN QUAVO Linear Fixture Instruction Manual

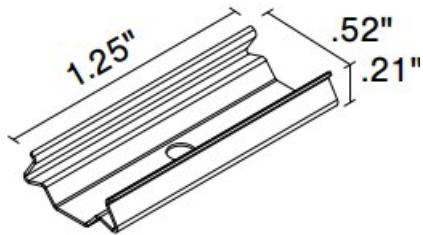


METHODS OF INSTALLATION



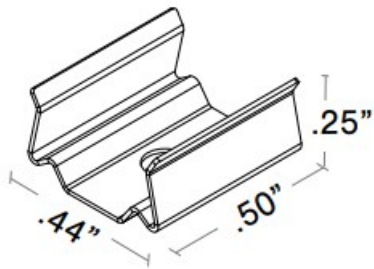
COMPONENTS & HARDWARE

STAINLESS STEEL CLIP



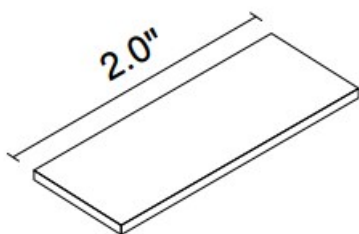
WHITE SNUG CLIP

WHITE SNUG CLIP

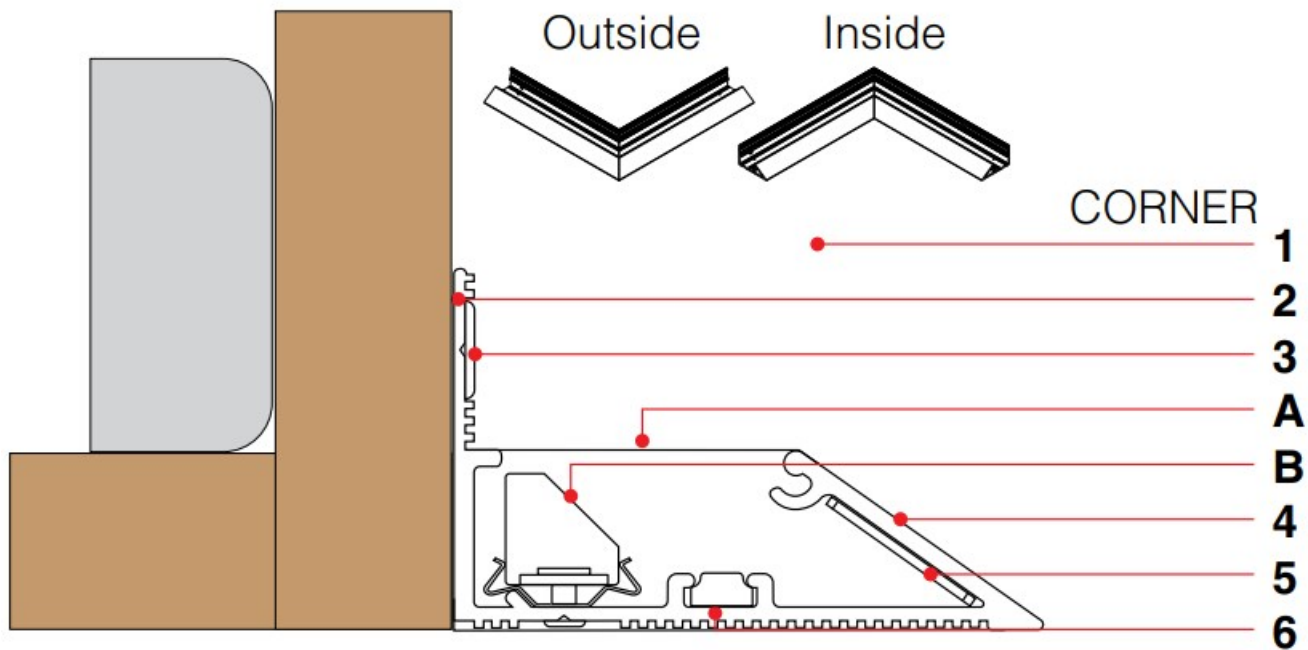


VHB TAPE

VHB TAPE



VHB



A – Fixture Housing Extrusion

B – Lighting Module

1. Inside and Outside Corners.
2. Fixture Mounting Channel.
3. Mounting Screws, by Others.
4. Fixture Housing Extrusion – Anodized Aluminum – surface treated to accept paint. Provided in 8ft nominal lengths. Field cut final piece in linear run to desired length.
5. End Cap – Used to close the end of the fixture housing extrusion. Not required when the fixture housing extrusion ends in a corner or against a wall. Available in Left and Right Configurations.
6. Inline Bracket; Designed to align and hold sections of fixture housing together.

NOTES:	
CLIPS	VHB TAPE
<ul style="list-style-type: none"> • SST-08 2 clips provided for 4' or less; 4 clips provided for greater than 4' 	<ul style="list-style-type: none"> • 2 Strips provided for 4' or less, 4 strips provided for greater than 4'
<ul style="list-style-type: none"> • WSC 2 clips provided for 4' or less; 4 clips provided for greater than 4' 	

SURFACE MOUNTING METHOD

SURFACE PREPARATION



70-100°F



50% humidity
or less

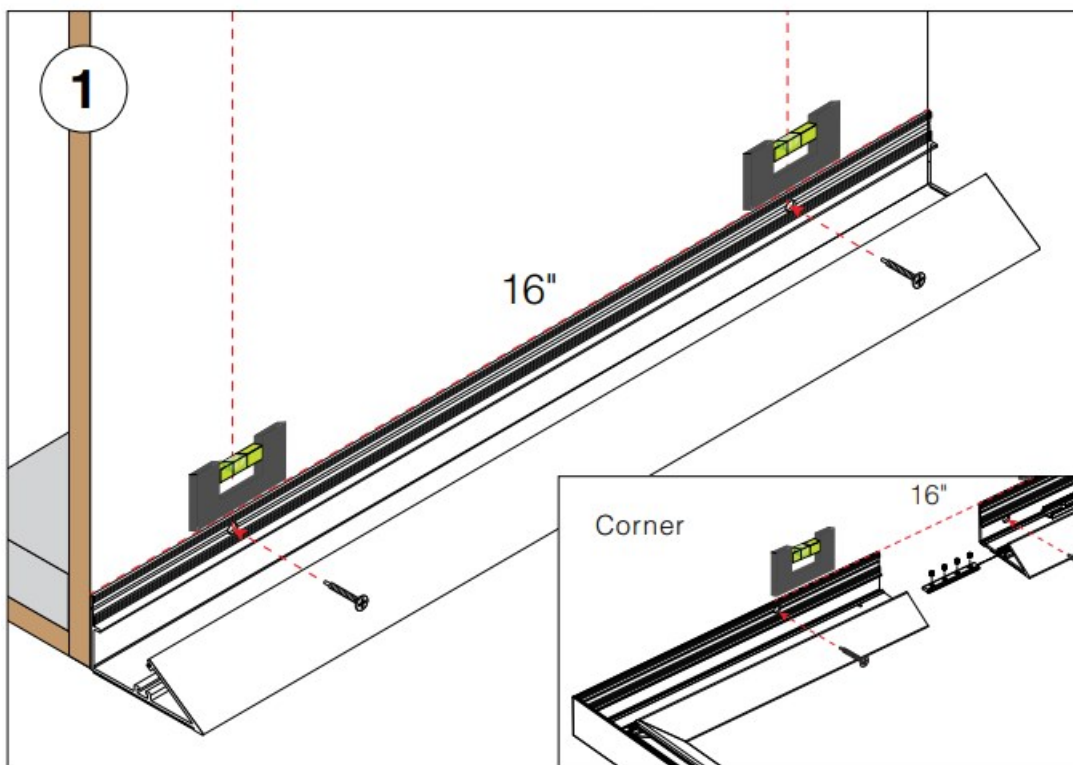


72 hrs

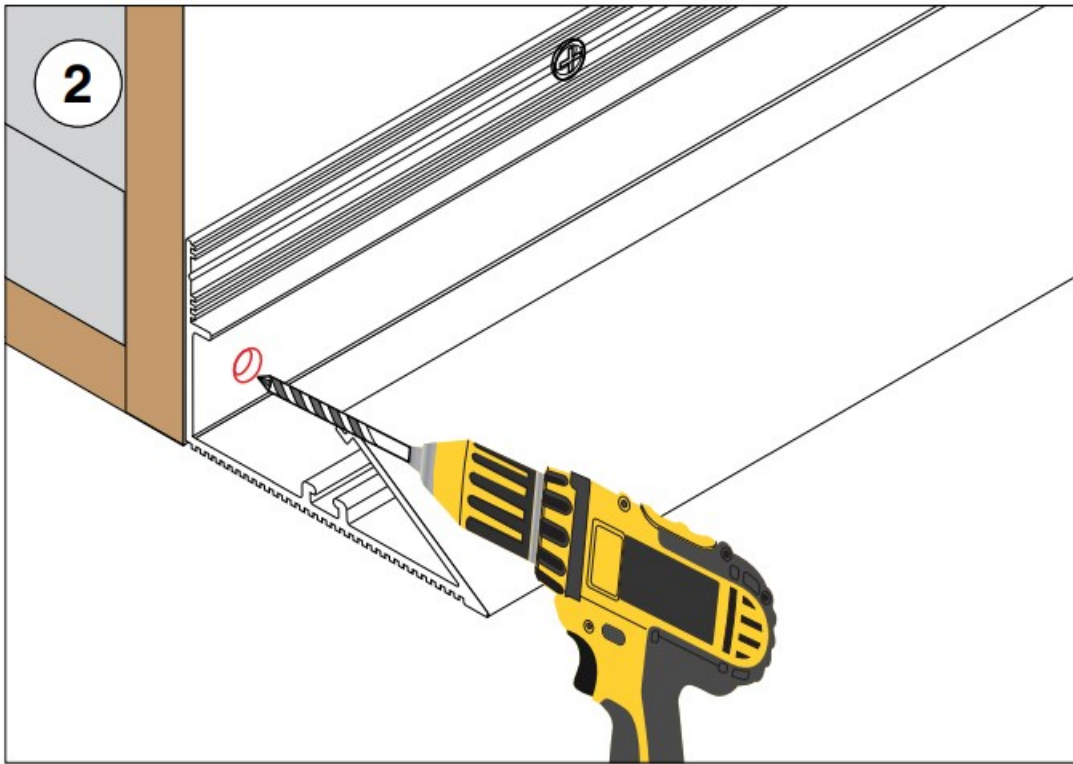
Temperature and environmental concerns:

- Ideal application environment is 70-100°F in 50% humidity or less.
- Minimum application temperature: 50°F
- This temperature and humidity should be maintained for 72 hours after application for maximum bond strength.

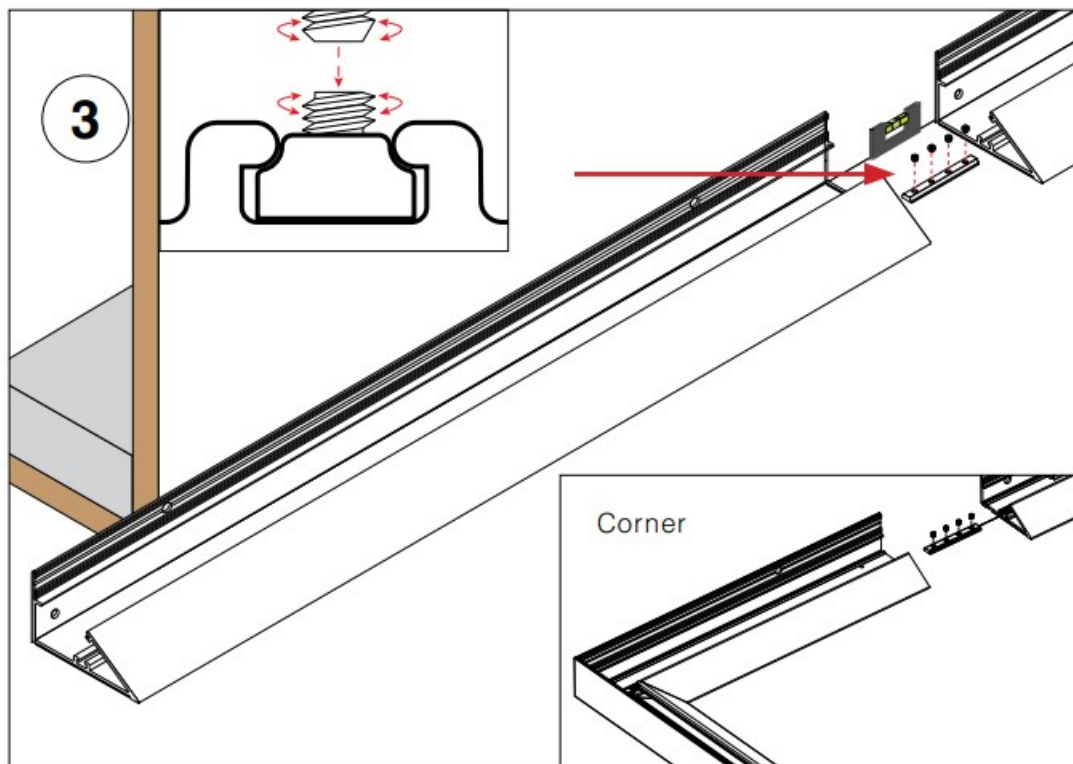
COVE MOUNTING METHOD: QUOVA-MICRO



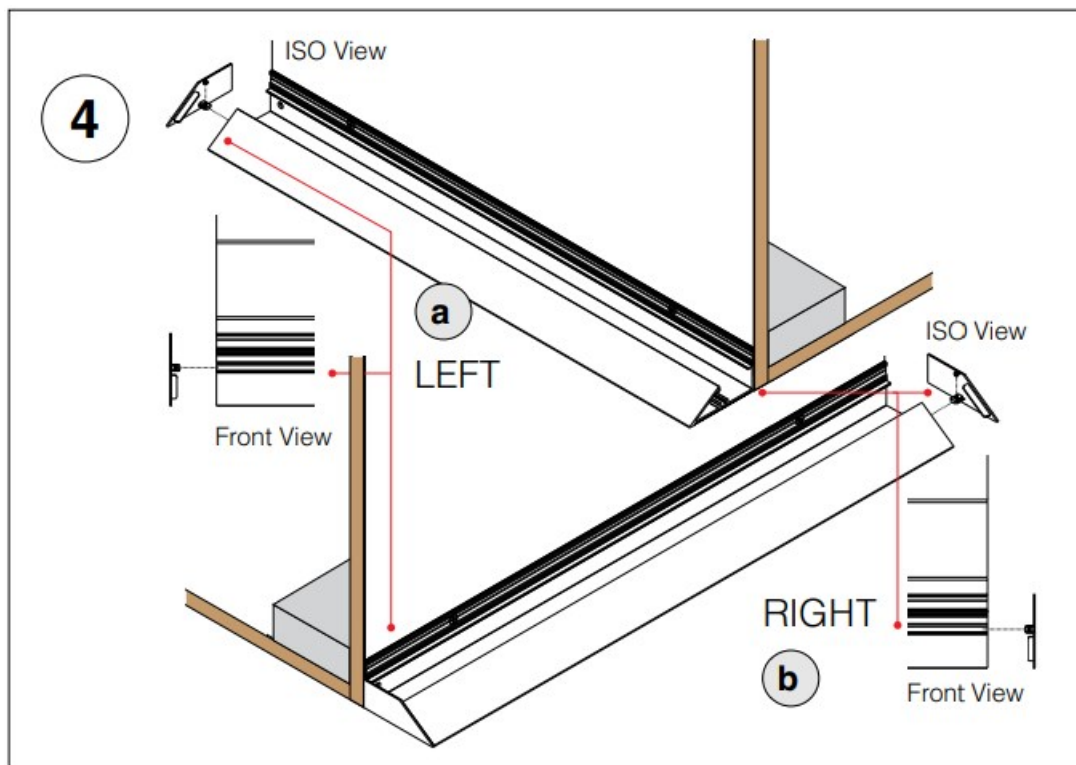
- a: Pre-drill 1/4" pilot holes every 16" to align with studs start with corners and fill in with straight sections..
- b: Align QUOVA to be level, and if necessary, to line up with ceiling/soffit.
- c: Mount QUOVA to wall with #6 screws (by others) every 16" into studs.



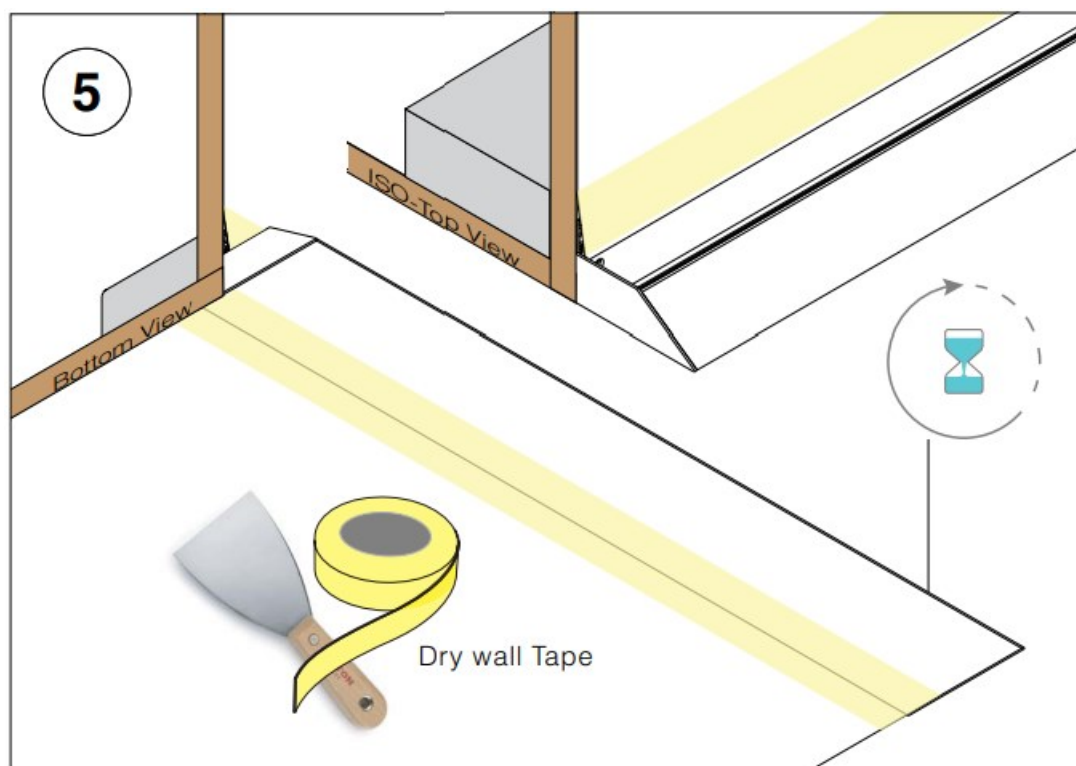
- a: Determine wire feed location.
- b: Drill 1/4" Hole through QUOVA and drywall.



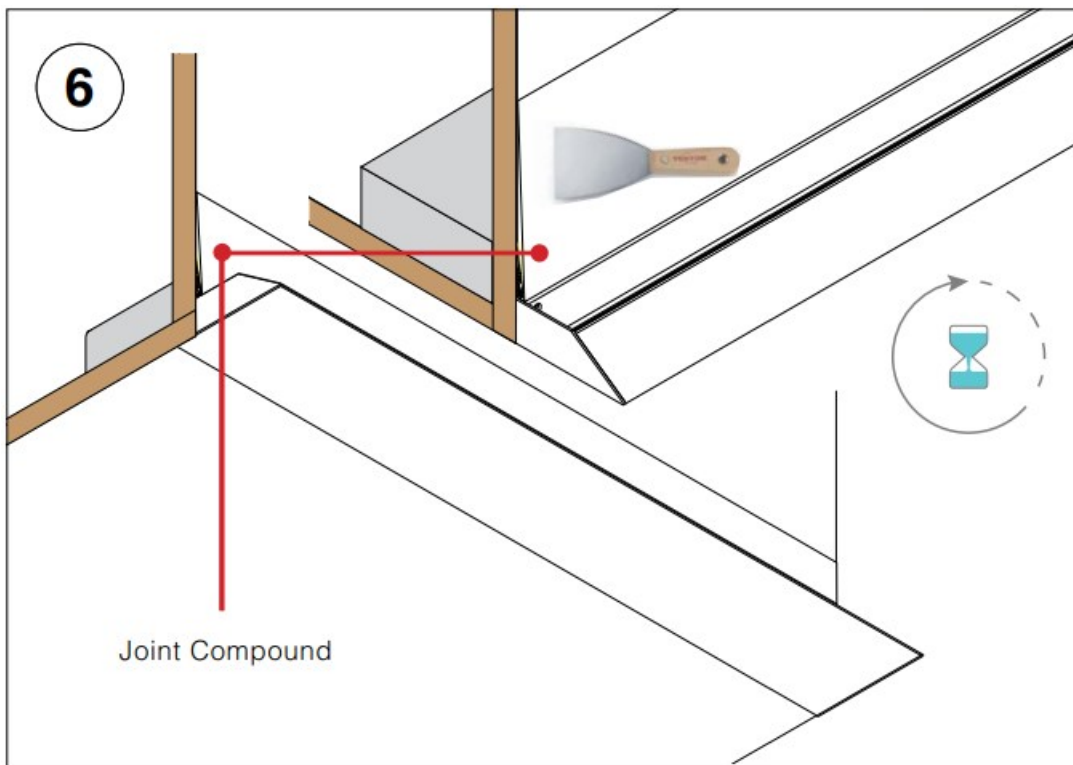
- a: If multiple lengths are being used, install the inline bracket.
- b: Install inline bracket in mounted piece.
- c: Follow Instructions of step 1 for second length.
- d: Confirm both pieces are level and aligned, mount second piece, slide inline bracket over and tighten set screws.
- e: Repeat for additional lengths as needed.



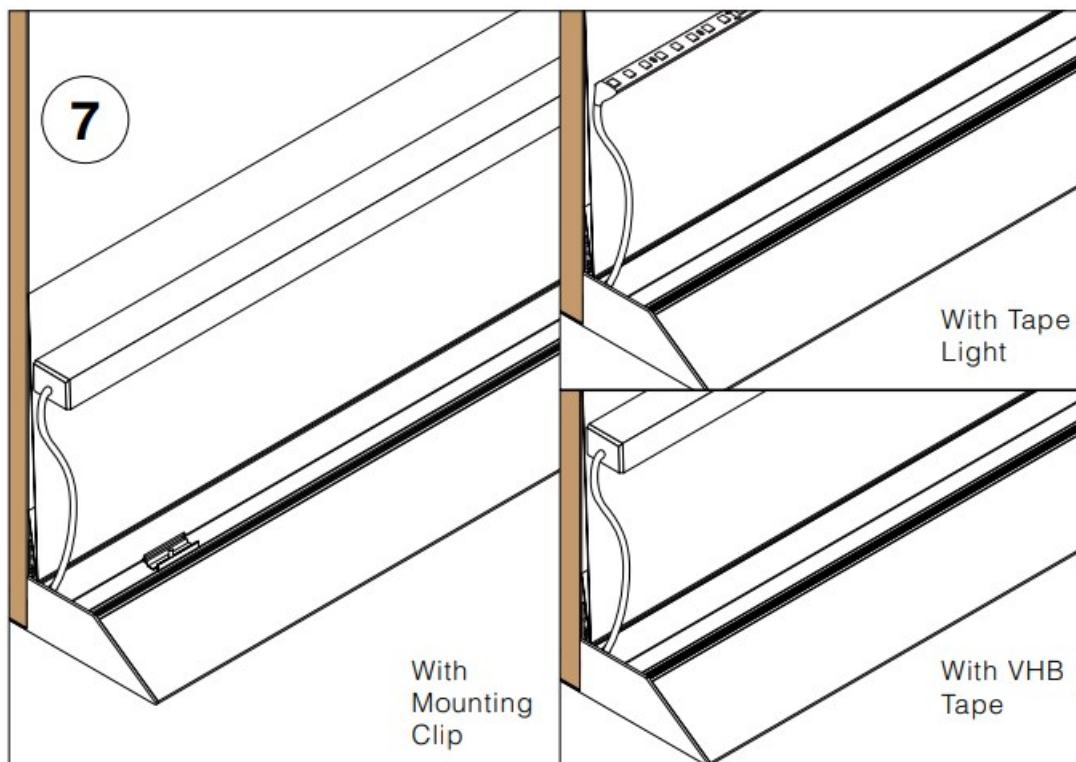
Install the endcap on the appropriate side and tighten set screw and repeat on the other side.



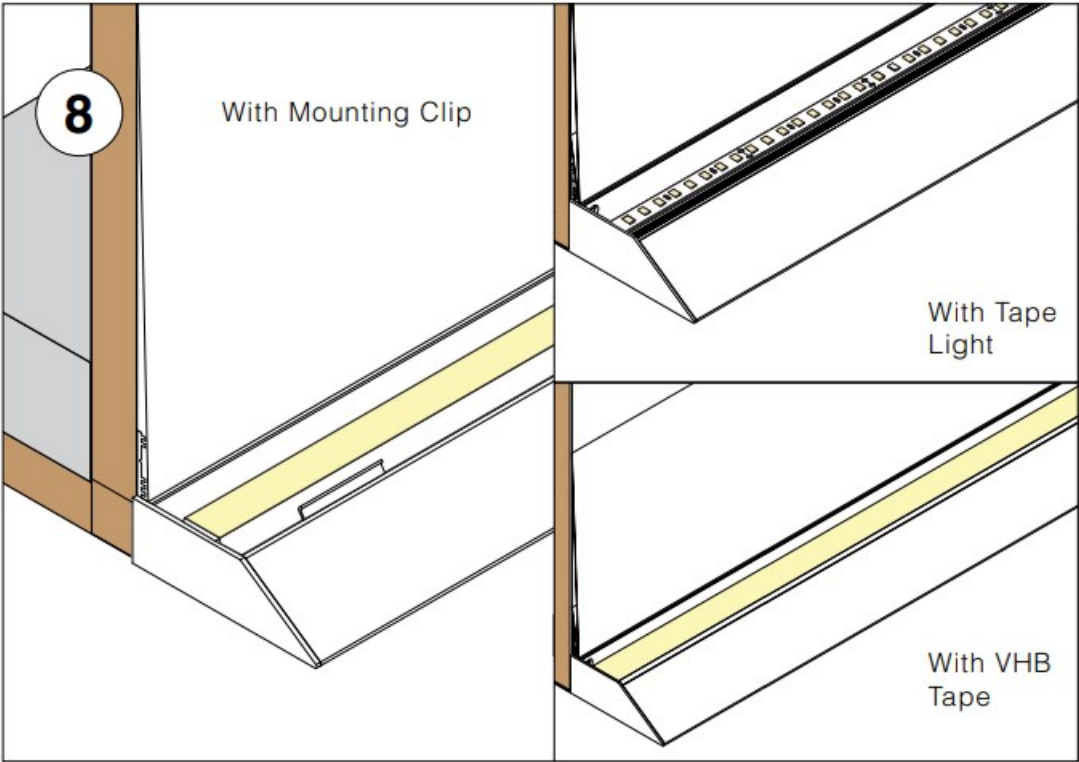
Use drywall tape at joint of QUOVA to wall and underneath.



- a: Apply joint compound to wall and underneath.
- b: Allow to dry.
- c: Sand and repeat as necessary.
- d: Once completed, apply primer and paint.



- a: Mount Lighting fixture inside of QUOVA.
- b: For VHB option: adhere the VHB adhesive, peel the white film back while evenly applying the tape to the mounting side of the fixture. The red side should be visible.
- c: Run wire through pre-drilled hole back to power supply or junction box.



QUOVA Micro Install Assembly.



Contents

1 Documents / Resources

1.1 References

2 Related Posts

Documents / Resources

	<p>Q-TRAN QUAVO Linear Fixture [pdf] Instruction Manual QUAVO Linear Fixture, QUAVO, Linear Fixture, Fixture</p>
	<p>Q-TRAN QUAVO Linear Fixture [pdf] Instruction Manual QUAVO Linear Fixture, QUAVO, Linear Fixture, Fixture</p>

References

- [RealNames | A more meaningful email address](#)
- [LED Lighting Systems, Linear LED Lights, LED transformers | Q-Tran](#)