



Q-TRAN Micro 5 Series Mini LED Fixture Installation Guide

[Home](#) » [Q-TRAN](#) » Q-TRAN Micro 5 Series Mini LED Fixture Installation Guide 

Contents

- [1 Q-TRAN Micro 5 Series Mini LED Fixture](#)
- [2 Mounting](#)
- [3 Documents / Resources](#)
 - [3.1 References](#)
- [4 Related Posts](#)



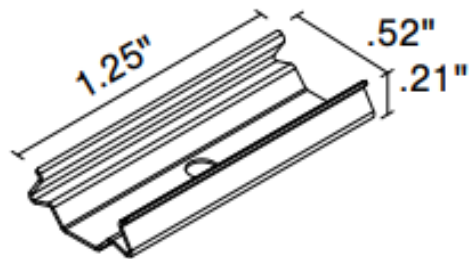
Q-TRAN Micro 5 Series Mini LED Fixture



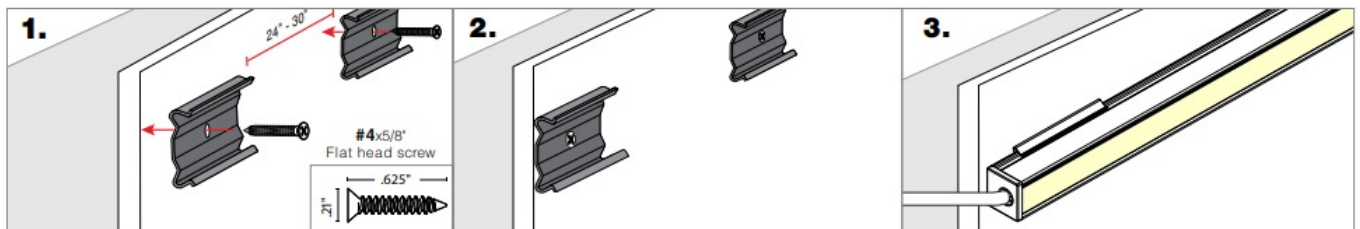
Mounting

NOTE: 2 clips provided for 4' or less; 4 clips provided for greater than 4'

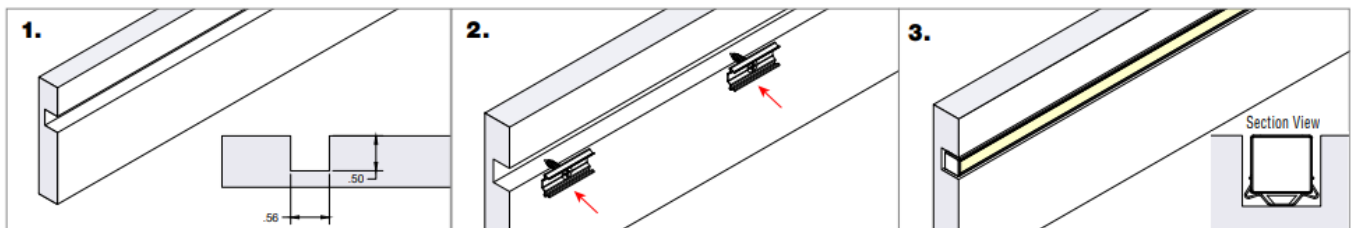
Stainless Steel Clip (SST-08)



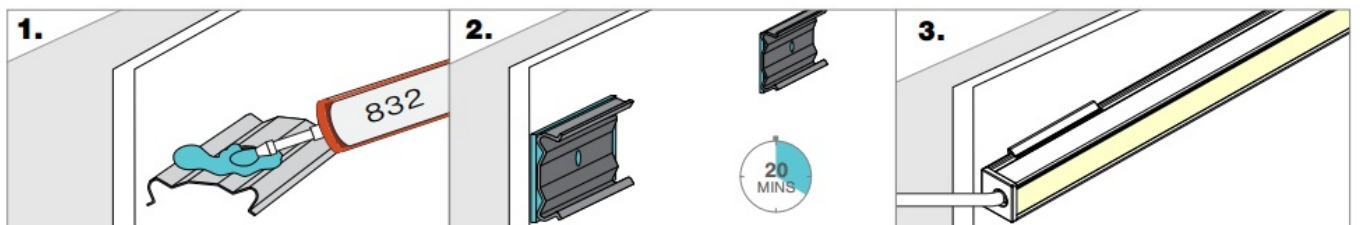
Screw Mounting



Millwork Mounting – SST Clip

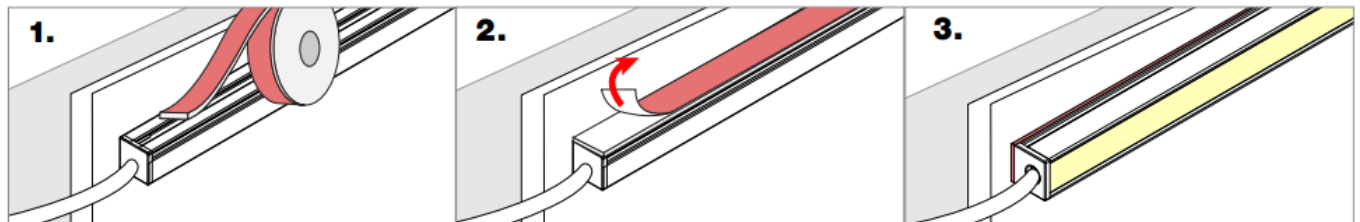


832 Silicone Mounting

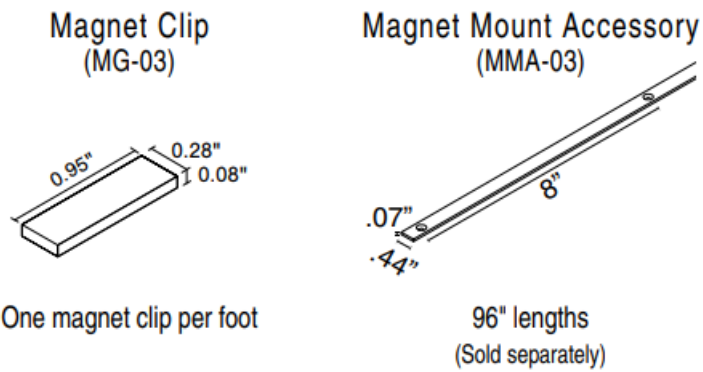


NOTE: Apply silicone in a well ventilated area. 832 Silicone is sold with caulking gun. Do not use in any submersible applications.

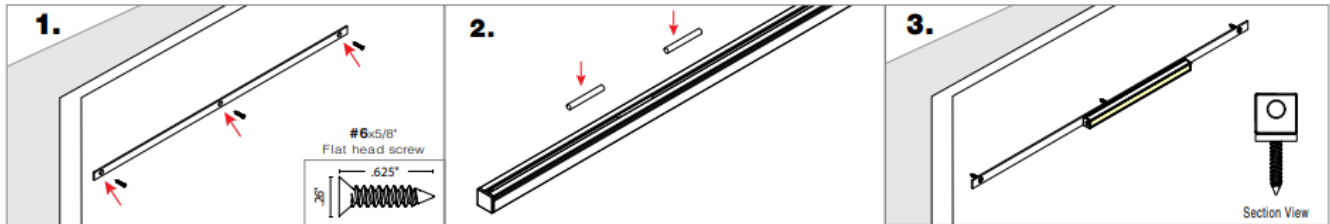
VHB Mounting



NOTES: • Field modifications must comply with Q-Tran's installation methods otherwise warranty is null and void



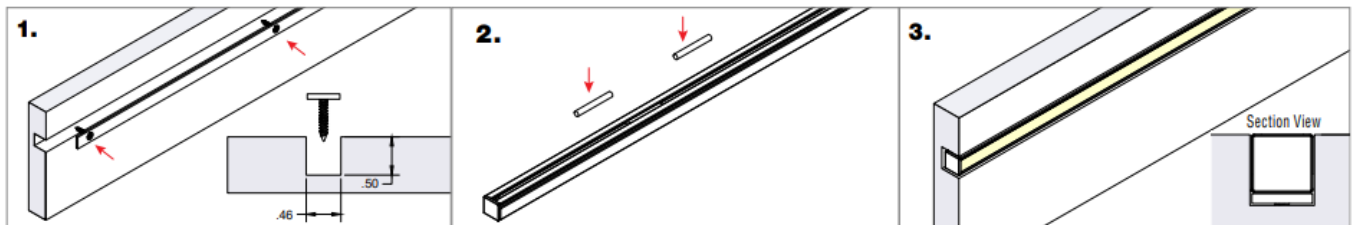
Magnet Mounting



1. Using the #6 Flat head screws, mount screws into the magnet bracket through the drilled holes
2. Adjust magnet location by applying rubber stoppers.
3. Connect the assembled fixture to the magnet bracket, the install should match the section view.

NOTE: The magnet clips should be offset to the flat heads used to secure the bracket, to maximize magnetic connection.

Millwork Mounting – Magnet



NOTE: For millwork with magnets, adhesive must be used to complete install.

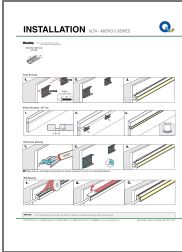
© 2022 Q-Tran Inc. All rights reserved
 155 Hill St. Milford, CT 06460
 203-367-8777

sales@q-tran.com

www.q-tran.com

Specification subject to change. Rev-03-31-22

Documents / Resources



Q-TRAN Micro 5 Series Mini LED Fixture [pdf] Installation Guide
Micro 5 Series Mini LED Fixture, Micro 5 Series, Mini LED Fixture, LED Fixture, Fixture

References

- [RealNames | A more meaningful email address](#)
- [LED Lighting Systems, Linear LED Lights, LED transformers | Q-Tran](#)