

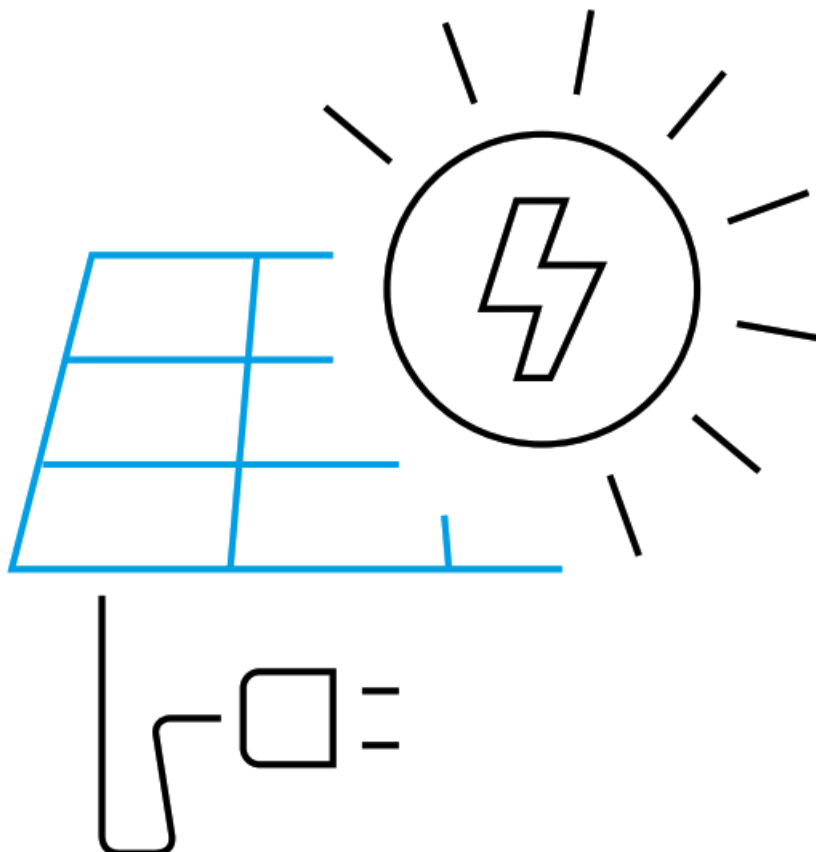
Q CELLS Q.PEAK Duo ML-G10.X Solar Module Series User Manual

[Home](#) » [Q CELLS](#) » Q CELLS Q.PEAK Duo ML-G10.X Solar Module Series User Manual 



Engineered in Germany

INSTALLATION AND
OPERATION MANUAL
Q.PEAK DUO ML-G10.X solar module series



Contents

- 1 Q.PEAK Duo ML-G10.X Solar Module Series
- 2 INTRODUCTION
- 3 PLANNING
- 4 INSTALLATION
- 5 ELECTRICAL CONNECTION
- 6 GROUNDING
- 7 FAULTS AND DEFECTS
- 8 DISPOSAL
- 9 MAINTENANCE AND CLEANING
- 10 Documents / Resources
- 11 Related Posts

Q.PEAK Duo ML-G10.X Solar Module Series

DOCUMENT REVISION 02

This installation manual is valid for North America as of August 1st, 2021 for Q.PEAK DUO ML-G10, Q.PEAK DUO ML-G10+, Q.PEAK DUO ML-G10.2, Q.PEAK DUO BLK ML-G10, Q.PEAK DUO BLK ML-G10+, Q.PEAK DUO ML-G10.a, Q.PEAK DUO ML-G10.a+, Q.PEAK DUO BLK ML-G10.a, and Q.PEAK DUO BLK ML-G10.a+ solar modules, and replaces all earlier versions.

This manual is subject to change. The data sheets and customer information valid at the point in time when the relevant module was manufactured apply to the installation, mounting, and maintenance procedures for the respective solar modules, as far as no updated document is provided.

INTRODUCTION

With solar modules from Hanwha Q CELLS America Inc. (hereafter referred to as “Q CELLS”), you can directly transform the sun’s limitless energy into environmentally- friendly solar electricity. In order to ensure the maximum performance of your Q CELLS solar modules, please read the following instructions completely and carefully and observe all guidelines. Non-compliance may result in damage and/or physical injury.

This installation manual provides instructions for the safe installation and operation of crystalline solar modules.

- Please read these instructions carefully before proceeding with your installation.
- Please retain these instructions for the life of the solar modules.
- Please ensure that this installation manual is available to the operator at all times.
- This installation manual should be given to all subsequent owners or users of solar modules.
- All supplements received from the manufacturer should be included.
- Please observe all other applicable documents.
- If your questions are not satisfactorily answered in the manual, please contact your system supplier.

Additional information can be found on our website at www.q-cells.us.

Intended Use

This manual is valid in North America for Q CELLS solar modules.

These instructions contain information regarding the safe handling and use of quality crystalline solar modules from Q CELLS and their installation, mounting, wiring, and maintenance.

Symbols and Labels

The following symbols and labels are used throughout the installation manual for ease of use.

SYMBOL	DESCRIPTION
→	The procedure with one or more steps.
•	Lists of items.
☑	Ensure that when carrying out a procedure, you check the results of said procedure.
⊘	Prohibited.



Beware of possible danger or damage.

Categories:

- Danger: Risk of fatal injury
- Attention: Risk of serious injury or damage to property
- Note: Risk of damage to the product

Units

Where both Imperial and U.S. units (for example inches) are shown, metric units are definitive. References to “Data Sheet” or “Module Data Sheet” refer to the Module Data Sheet applicable to the module being used.

Safety Regulations

The installer and solar module operator are responsible for compliance with all applicable statutory requirements and regulations.

- The following regulations and standards must be upheld at all times during the installation, operation, and maintenance of the solar modules:
- Installation and Operation Manual.
- Other applicable documents (such as country-specific regulations for pressure equipment, operational safety, hazardous goods, and environmental protection).
- Regulations and requirements are specific to the system.
- Applicable country-specific laws, regulations, and provisions governing the planning, installation, and operation of solar power systems and work on roofs.
- Any valid international, national, and regional regulations governing work with direct current, especially those applicable to the installation of electrical devices and systems, and regulations issued by the respective energy provider governing the parallel operation of solar power systems.
- Accident-prevention regulations.

Certified Personnel

Both, the operator and installer are responsible for ensuring that the installation, maintenance, connection to the grid, and dismantling are carried out by trained and qualified electricians and engineers with approved training certificates (issued by a state or federal organization) for the respective specialist trade. Electrical work may only be performed by an officially certified tradesperson in accordance with the applicable safety standards, accident prevention regulations, and the regulations of the local energy provider.

Validity

These instructions are only valid for crystalline solar modules from the company Q CELLS as specified in chapter „2.1 Technical Specifications“. Q CELLS assumes no liability for damage resulting from failure to observe these instructions.

- ➔ Please observe the wiring and dimensioning of the system.
- ➔ The installer of the system is responsible for compliance with all necessary safety regulations during set-up and installation.

Q CELLS assumes no liability on the basis of these instructions.

Q CELLS is only liable in the context of contractual agreements or in the context of accepted guarantees.

Q CELLS accepts no other responsibility for the functionality and safety of the modules.

- ➔ Please observe the instructions for any other system components that may be part of the complete solar power system. It may be necessary to carry out a structural analysis for the entire project.
- ➔ If your questions are not satisfactorily answered in the manual, please contact your system supplier.

Additional information can be found on our website at www.q-cells.us.

Information for the Operator

- ➔ Please keep this installation manual for the entire life of the solar power system.
- ➔ Please contact your system supplier for information concerning the formal requirements for solar power systems.
- ➔ Please be sure to contact the relevant local authorities and energy providers regarding regulations and permit requirements prior to the installation of the solar power system. Your financial success depends on the fulfillment of these requirements.

Other applicable documents

This installation manual is only valid in combination with the following technical information.

DOCUMENT TYPE

Product data sheet

Packaging and transport information

MISUSE OR INCORRECT USE OF SOLAR MODULES VOIDS THE LIMITED WARRANTY AND MAY CREATE A SAFETY HAZARD AND RISK PROPERTY DAMAGE. THIS INCLUDES IMPROPER INSTALLATION OR CONFIGURATION, IM PROPER MAINTENANCE, UNINTENDED USE, AND UNAUTHORIZED MODIFICATION.

PLANNING

2.1 TECHNICAL SPECIFICATIONS

For additional information see the relevant datasheet of the module provided at www.q-cells.us.

PRODUCT LINE	Q.PEAK DUO ML-G10 Q .PEAK DUO ML-G10+ Q. PEAK DUO ML-G10.a Q. PEAK DUO ML-G10.a+	Q.PEAK DUO BLK ML-G1 0 Q.PEAK DUO BLK ML-G 10+ Q.PEAK DUO BLK M L-G10.a Q.PEAK DUO BL K ML-G10.a+	Q.PEAK DUO ML-G10.2
Type	Q.ANTUM DUO Z	Q.ANTUM DUO Z	Q.ANTUM DUO Z
Length [in]	74.0 (1879 mm)	74.0 (1879 mm)	74.0 (1879 mm)
Width [in]	41.1 (1045 mm)	41.1 (1045 mm)	41.1 (1045 mm)
Frame height [in]	1.26 (32 mm)	1.26 (32 mm)	1.26 (32 mm)
Area [yd ²]	2.34 (1.96 m ²)	2.34 (1.96 m ²)	2.34 (1.96 m ²)
Weight [lbs]	48.5 (22.0 kg)	48.5 (22.0 kg)	48.5 (22.0 kg)
Max. system voltage VSY S	1000 V	1000 V	1500 V
Max. series fuse rating	20 A	20 A	20 A
Permissible temperature range	-40 °F to +185 °F (-40 °C to +85 °C)		
Junction box protection class	IP67 with bypass diode		
Connector protection cla ss	IP68		
Fire rating based on AN SI / UL 61730	TYPE 2	TYPE 2	TYPE 1
Max. test load Push / Pul l1 [lbs/ft ²]	113 / 84 (5,400 Pa / 4,00 0 Pa)	113 / 84 (5,400 Pa / 4,000 Pa)	113 / 84 (5,400 Pa / 4,00 0 Pa)
Max. design load Push / Pull1 [lbs/ft ²]	75 / 55 (3,600 Pa / 2,660 Pa)	75 / 55 (3,600 Pa / 2,660 P a)	75 / 55 (3,600 Pa / 2,660 Pa)
Certificates	CE-compliant; IEC 61215:2016; IEC 61730:2016; PV module classification: Class I I; UL 61730		

1 Test and design load in accordance with IEC 61215:2016, depending on mounting options (see section [2.3 Mounting Options](#))

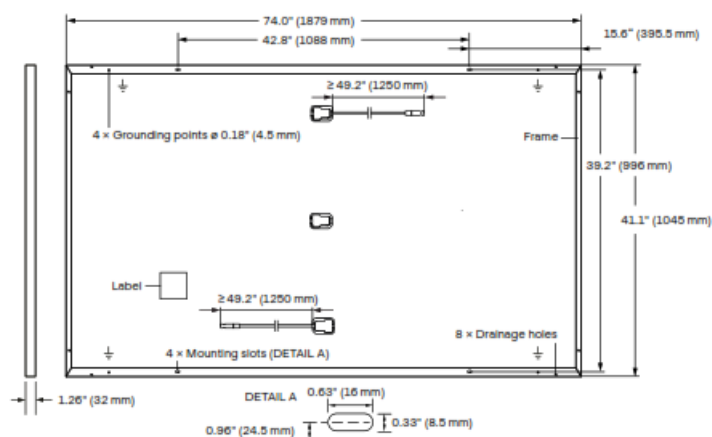


Fig. 1: External dimensions (in inch (mm)) and components for Q.PEAK DUO ML-G10, Q.PEAK DUO ML-G10+, Q.PEAK DUO ML-G10.2, Q.PEAK DUO BLK ML-G10, Q.PEAK DUO BLK ML-G10+, Q.PEAK DUO ML-G10.a, Q.PEAK DUO ML-G10.a+, Q.PEAK DUO BLK ML-G10.a and Q.PEAK DUO BLK ML-G10.a+

2.2 REQUIREMENTS

Installation Site

Please note the following guidelines that apply to the installation site:

- Solar modules are not explosion-proof and are not suitable for use in explosive environments.
- ➔ Do not operate solar modules near highly flammable gas and vapors (e.g. gas tanks, gas stations).
- ➔ Do not install modules in an enclosed space.
- ➔ Do not install modules in locations where they may be submerged in water (e.g. floodplains).
- ➔ Do not use modules as a substitute for the normal roofing (e.g. modules are not watertight).
- ➔ Do not install modules in close proximity to air conditioning systems.
- ➔ Do not install modules above 13,120 ft (4,000 m) altitude above sea level.
- ➔ Contact with saline water (e.g. spray water from the sea) and salt aggregation on the modules must be avoided.
- ➔ Do not bring any chemical substance (e.g. oil, solvent, etc.) into contact with any part of the panel. Only substances, which are released by Q CELLS, are allowed to be used during installation, operation, and maintenance.
- ➔ Any installation of modules on surfaces of water is prohibited.

This includes installations on floating as well as pile-based platforms. Q CELLS may extend the coverage of its warranty to such installations, based on a case-by-case assessment of the system design and location. Prior written consent by the warrantor is required in any case.

Prevention of Shadowing Effects

Optimal solar irradiation leads to maximum energy output:

- ➔ For this reason, install the modules so that they face the sun.
- ➔ Avoid shadowing (due to objects such as buildings, chimneys, or trees).
- ➔ Avoid partial shading (for example through overhead lines, dirt, or snow).

Limitations

The solar modules are designed for the following applications:

- Operating temperatures from -40°F to $+185^{\circ}\text{F}$.
- Pull loads and push loads according to chapter 2.3 ('Test Load' in accordance with IEC 61215 and 'Design Load $\times 1.5$ ' in accordance with UL 61730).
- Installation using a mounting structure for solar modules.

Mounting Structure Requirements

Requirements for the mounting structure:

- Conform to the necessary structural requirements.
- Compliant with local snow and wind loads.
- Properly fastened to the ground, the roof, or the façade.
- Forces acting on the module are relayed to the mounting substructure.
- Ensures sufficient rear ventilation of the module.
- Avoid the usage of different metals to prevent contact corrosion.

- Allows for stress-free expansion and contraction due to temperature fluctuations.

→ Ensure that no additional forces are applied through the mounting system into the module except for the wind and snow loads. Additional forces and moments of torque at the mounting positions caused by torsions, displacements, or vibrations in the mounting system are not allowed.

- Ensure that the clamps and the mounting frame are compatible.

Clamp System Recommendations

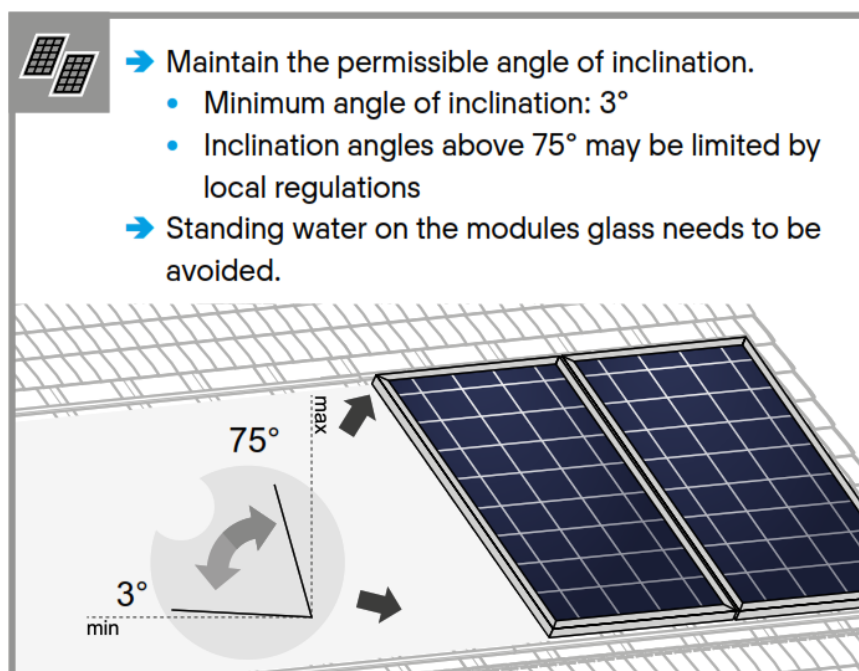
Use customary clamps that satisfy the following requirements:

- Clamp width: ≥ 1.5 in (38 mm).
- Clamp height compliant with a 1.26 in (32 mm) frame height.
- Clamp depth: 0.28-0.47 in (7-12 mm). (applicable for all CL clamping mounting options in section „2.3 Mounting Options“)
- Clamps are not in contact with the front glass.
- Clamps do not deform the frame.
- Clamps that satisfy the structural requirements based on the conditions of the installation site according to the applicable regulations and technical standards.
- Long-term stable clamps that securely affix the module to the mounting frame.

Module Orientation Requirements

- Vertical or horizontal installation is permitted.
- Ensure that rain and melting snow can run off freely. No water accumulation.
- Ensure that the drainage holes in the frame are not covered.

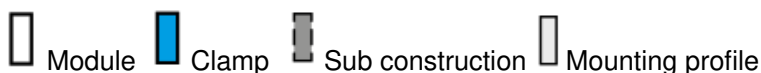
No sealing.




2.3 MOUNTING OPTIONS

Fig. 2: Installation options for crystalline Q CELLS modules. All dimensions are given in inches (mm in brackets). Also, observe the maximum test loads and clamping range as specified on the following page.

The illustrated installation options apply for both horizontal and vertical module orientation.



TYPE OF INSTALLATION	MODULE	POINT MOUNTING SYSTEM	LINEAR MOUNTING SYSTEM
INSTALLATION WITH CLAMPS	Q.PEAK DUO ML-G10 Q.PEAK DUO ML-G10+ Q.PEAK DUO ML-G10.2 Q.PEAK DUO BLK ML-G10 Q.PEAK DUO BLK ML-G10+ Q.PEAK DUO ML-G10.a Q.PEAK DUO ML-G10.a+ Q.PEAK DUO BLK ML-G10.a Q.PEAK DUO BLK ML-G10.a+		
HYBRID CLAMPING	Q.PEAK DUO ML-G10 Q.PEAK DUO ML-G10+ Q.PEAK DUO ML-G10.2 Q.PEAK DUO BLK ML-G10 Q.PEAK DUO BLK ML-G10+ Q.PEAK DUO ML-G10.a Q.PEAK DUO ML-G10.a+ Q.PEAK DUO BLK ML-G10.a Q.PEAK DUO BLK ML-G10.a+		
INSTALLATION ON MOUNTING POINTS	Q.PEAK DUO ML-G10 Q.PEAK DUO ML-G10+ Q.PEAK DUO ML-G10.2 Q.PEAK DUO BLK ML-G10 Q.PEAK DUO BLK ML-G10+ Q.PEAK DUO ML-G10.a Q.PEAK DUO ML-G10.a+ Q.PEAK DUO BLK ML-G10.a Q.PEAK DUO BLK ML-G10.a+		

INSTALLATION WITH INSERTION PROFILES	Q.PEAK DUO ML-G10 Q.PEAK DUO ML-G10+ Q.PEAK DUO ML-G10.2 Q.PEAK DUO BLK ML-G10 Q.PEAK DUO BLK ML-G10+ Q.PEAK DUO ML-G10.a Q.PEAK DUO ML-G10.a+ Q.PEAK DUO BLK ML-G10.a Q.PEAK DUO BLK ML-G10.a+	NOT PERMITTED	 IP1
--	---	---------------	--

Specifications

MODULE TYPE	MOUNTING	MOUNTING CLAMPS* [IN (MM)]	TEST LOAD PUSH / PULL **[PA]	DESIGN LOAD PUSH / PULL **[PA]	SAFETY FACTOR
	CL1a	5.12 – 13.8 (130 – 350)	5400 / 4000	3600 / 2660	1.5
	FB1	15.6 (395.5)			
	CL1a	0.79 – 19.7 (20 – 500)	5400 / 3600	3600 / 2400	
	FB2	15.6 (395.5)		2660 / 2660	
	CL3	9.45 – 13.8 (240 – 350)	4000 / 4000	1600 / 1600	
	CL1a	0.79 – 25.6 (20 – 650)			
	CL1b	11.8 – 19.7 (300 – 500)	2400 / 2400		
	IP1	–	3600 / 3300	2400 / 2200	
	CL5	short side: 0.79 – 3.94 (20 – 100) long side: 11.8 – 17.7(300 – 450)			

The below mounting options are only possible under certain conditions.

MODULE TYPE	MOUNTING OPTION	POSITION OF CLAMPS* [IN (MM)]	TEST LOAD PUSH / PULL*** [PA]	DESIGN LOAD PUSH / PULL*** [PA]	SAFETY FACTOR
Q.PEAK DUO ML-G10 Q.PEAK DUO ML-G10+ Q.PEAK DUO ML-G10.2 Q.PEAK DUO BLK ML-G10 Q.PEAK DUO BLK ML-G10+ Q.PEAK DUO ML-G10.a Q.PEAK DUO ML-G10.a+ Q.PEAK DUO BLK ML-G10.a Q.PEAK DUO BLK ML-G10.a+	CL2a (with rails)	0.79 – 3.94 (20 – 100)****	2400 / 2000	1600 / 1330	1.5
	CL2a (with rails)	0.79 – 11.8 (20 – 300)****	2400 / 1800	1600 / 1200	
	CL2b (without rails)	0.79 – 7.87 (20 – 200)	2000 / 2000	1330 / 1330	
	CL2b (without rails)	0.79 – 11.8 (20 – 300)	1800 / 1800	1200 / 1200	

* Distance between outer edge of module and middle of the clamp; consider further details below.

** Loads according to IEC 61215-2:2016 and UL 61730.

*** Test procedure according to IEC 61215-2:2016 and UL 61730. Mounting options do not fulfill the requirements of the standards.

**** Rails must not be under the junction box.

ATTENTION

→ The loads in the table are related to the mechanical stability of the solar modules. The mechanical stability of the mounting system including clamps has to be evaluated by the system supplier. The Q CELLS listed test load values were determined with the following clamp parameters: clamp width= 1.5 in (38 mm) and clamp depth = 0.39 in (10 mm). The system installer is responsible for the determination of location-specific load requirements.

→ CL1a with push test loads of 5400 Pa: The clamp position is variable in the given range but the distance between the clamps along the long side of the module (span) must not be larger than 55.1 in (1400 mm).

→ CL1b: Using short mounting rails is permissible if they overlap with the module less than 8.27 in (210 mm). The minimum height of the short mounting rails should be ≥ 1.38 in (35 mm) (clearance between frame bottom edge and rooftop).

→ Ensure, that the sub construction does not touch the junction box (even under load). Ensure that the clamps or insertion profiles etc. do not touch the glass (even under load).

→ Ensure, that the junction box's connection cables do not run between the laminate and mounting rails.

→ A minimum support depth of 0.59 in (15 mm) is required on the back side of the module. The minimum required support depth on the module backside for CL5 is 0.39 in (10 mm) on the long frame side and 0.59 in (15 mm) on the short frame side. For the front side of the module for IP1, this minimum support depth should be 0.39 in (10 mm).

→ For CL1, CL2a, CL3, FB1 and FB2: Ensure that module frame is fixed directly on the rail of the substructure (no spacer allowed between the module and substructure).

→ The module bends under loads. Therefore, sharp objects (e.g. screws) must not be mounted near the module backside.

→ Unbalanced snow loads (e.g. snow overhangs, snowdrifts) which result in locally significantly increased loads must be removed or avoided by technical measures.

→ Use M8 corrosion-proof screws and washers (diameter ≥ 15.8 mm or ≥ 0.62 in) for FB1 and FB2 mounting. Mounting screws and washers should have the same material properties.

2.4 ELECTRICAL LAYOUT

Module Selection

For detailed key electrical data, please refer to the product data sheet for the respective product. (available at www.q-cells.us)

➔ For maximum energy yields, mismatches of specified electric current (IMPP) of more than 5 % should be avoided for all modules connected in series.

Safety Factor

During normal operation, a module may generate a greater current and/or higher voltage than that determined under standardized test conditions. Accordingly, the values of ISC and VOC marked on the module should be multiplied by a factor of 1.25 when determining:

- the component voltage ratings,
- conductor ampacities,
- fuse sizes,
- size of controls connected to the PV output.

Refer to Section 690-8 of the National Electrical Code for an additional multiplying factor of 125 percent (80 percent derating) which might be applicable.

➔ Please follow the valid national guidelines for the installation of electrical systems (refer to section 690-8 of the NEC for an additional multiplying factor of 125 percent [80 percent derating] which may be applicable).

Series Connection

Connection of modules in series is only permitted up to the maximum system voltage as listed in the applicable datasheet.

➔ Take into account all possible operating situations and all relevant technical norms and regulations when designing the system. This will ensure that the maximum system voltage, including all necessary safety margins, is not exceeded.

➔ Take the voltage limit of the inverter into account when determining the maximum number of modules in the string.

Parallel Connection

Modules may be damaged by the occurrence of reverse currents (caused by module defects, ground leaks, or defective insulation).

➔ Ensure that the maximum reverse current load capacity indicated in the data sheet is met.

In order to limit reverse currents that may occur, we recommend using the following safety options:

1) Layout with a limited number of parallel connected strings :

Without undertaking further current blocking measures, a maximum of two module strings may be operated in parallel on a single inverter or MPP tracker.

2) Layout with string fuses :

Use overcurrent devices (e.g. fuses) according to the relevant standards in each string. Use PV-fuses according to IEC 60269-6.

Observe the maximum permitted number of strings as indicated in the specifications provided by the respective string fuse manufacturer and the technical guidelines.

NOTE!

When installing different product versions, the lowest minimum permitted reverse current load capacity applies.

Inverters

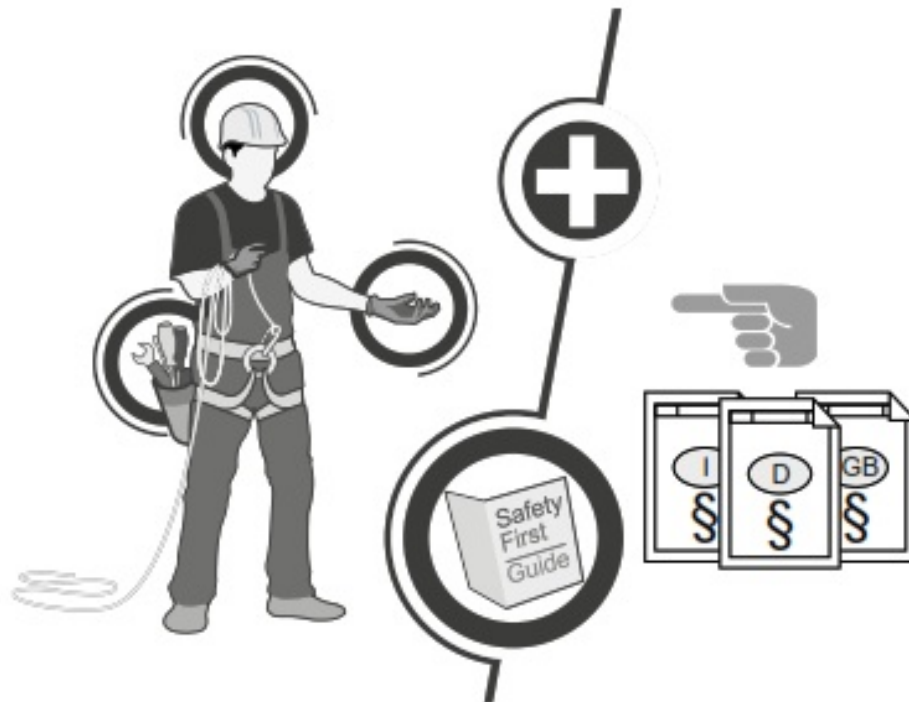
Inverters with or without transformers may be used.

INSTALLATION

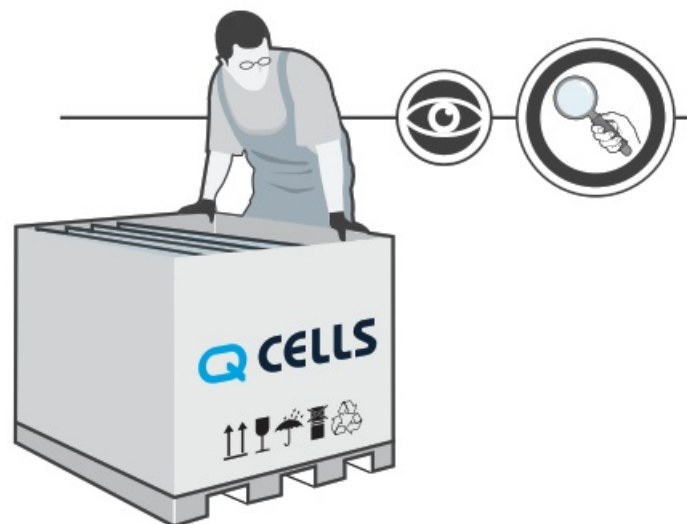


3.1 SAFETY AND TRANSPORT

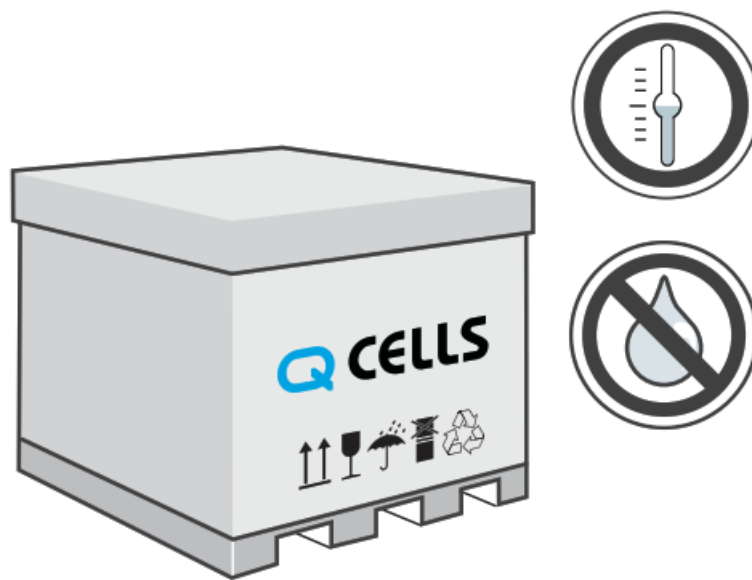
- ➔ Ensure that all personnel are aware of and adhere to accident prevention and safety regulations.
- ➔ While working wear clean gloves.



- ➔ Inspect the packaging for damages.
- ➔ Contact the transport company regarding any damage to the packaging and follow their instructions.
- ➔ Follow any instructions on the packaging.

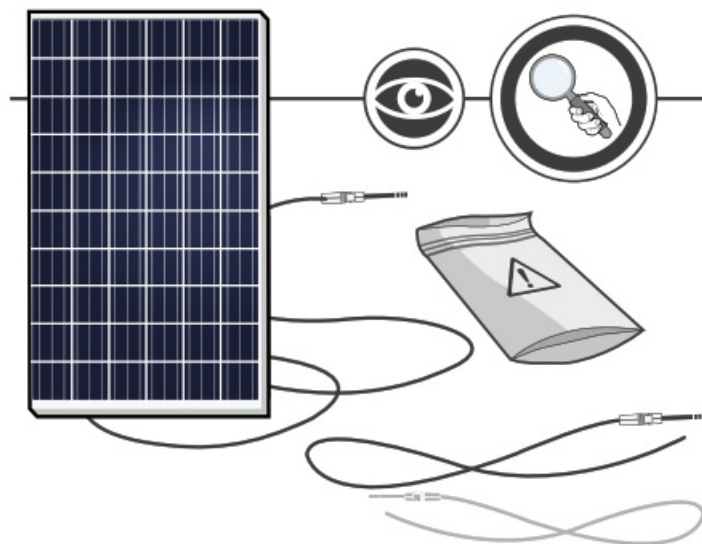


- ➔ Leave modules in their original packaging until installation.
 - ➔ Store the modules securely in cool and dry rooms.
- The packaging is not weatherproof.



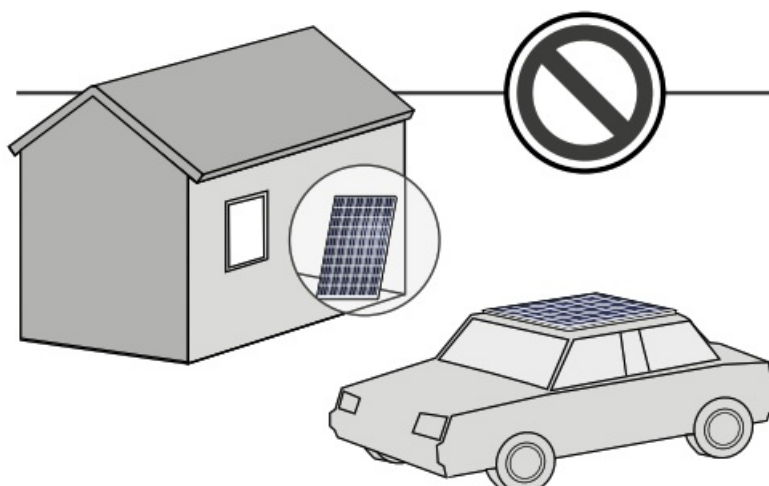
DANGER! Risk of fatal injury due to electric shock!

- ➔ Do not install damaged modules.
- ➔ Inform your vendor of any damages immediately.



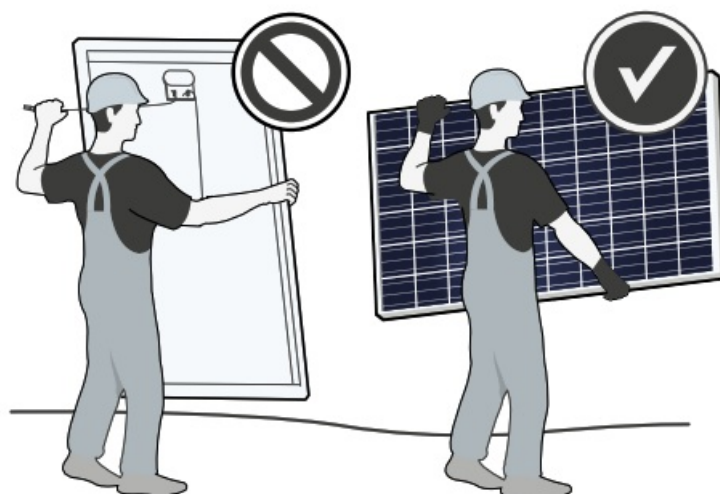
WARNING! Fire Risk!

- ➔ Do not install modules indoors.
- ➔ Do not install modules on moving objects.



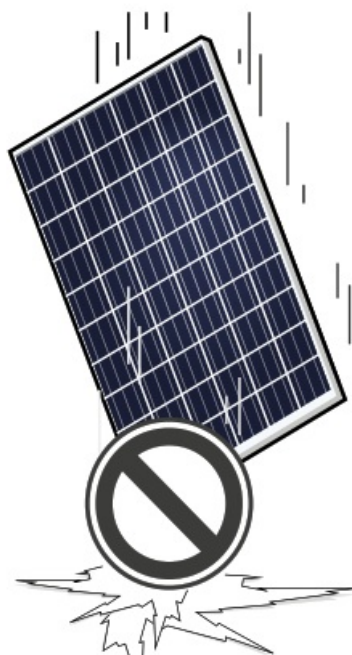
NOTE! Module damage may occur!

- ➔ Never lift or move the module with the connection cables or junction box.
- ➔ Carry modules upright and horizontally as shown.



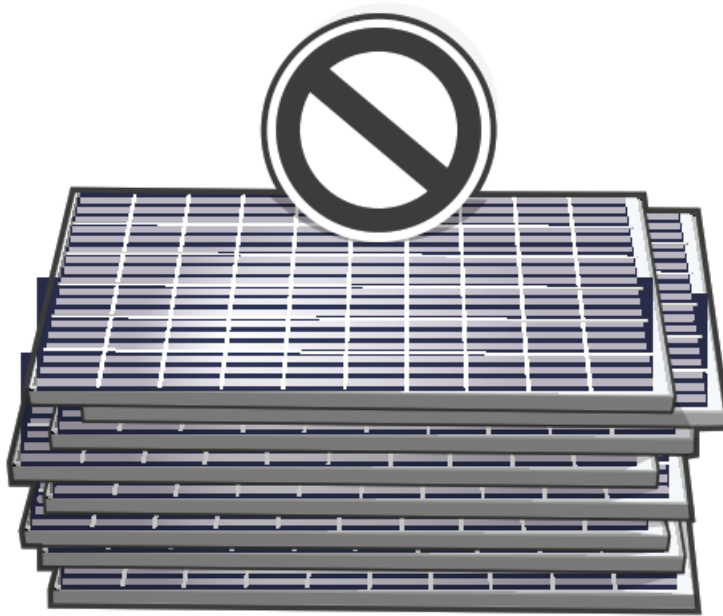
NOTE! Module damage may occur!

- ➔ Do not drop modules.



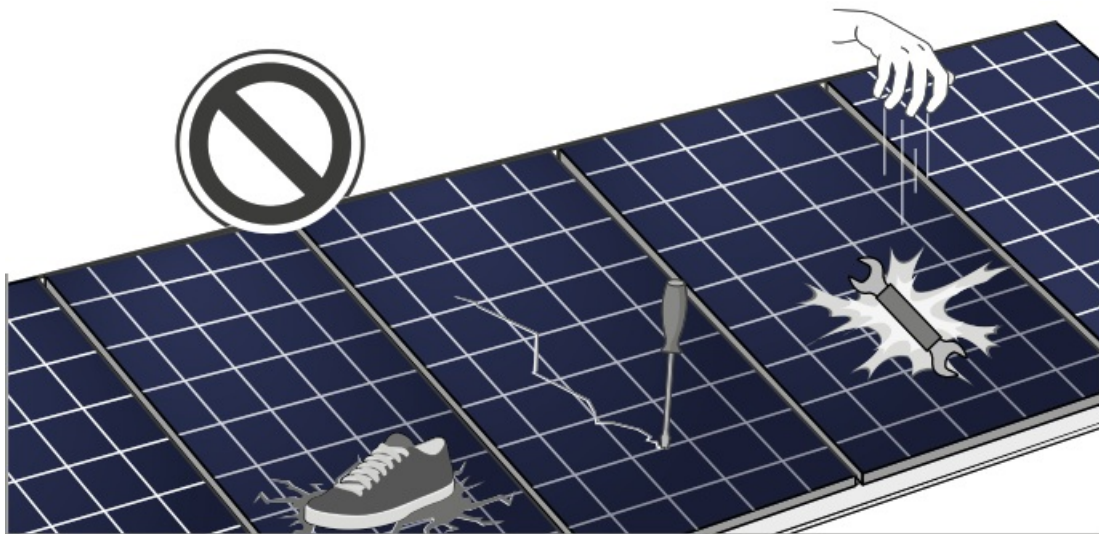
NOTE! Module damage may occur!

- ➔ Do not stack modules.



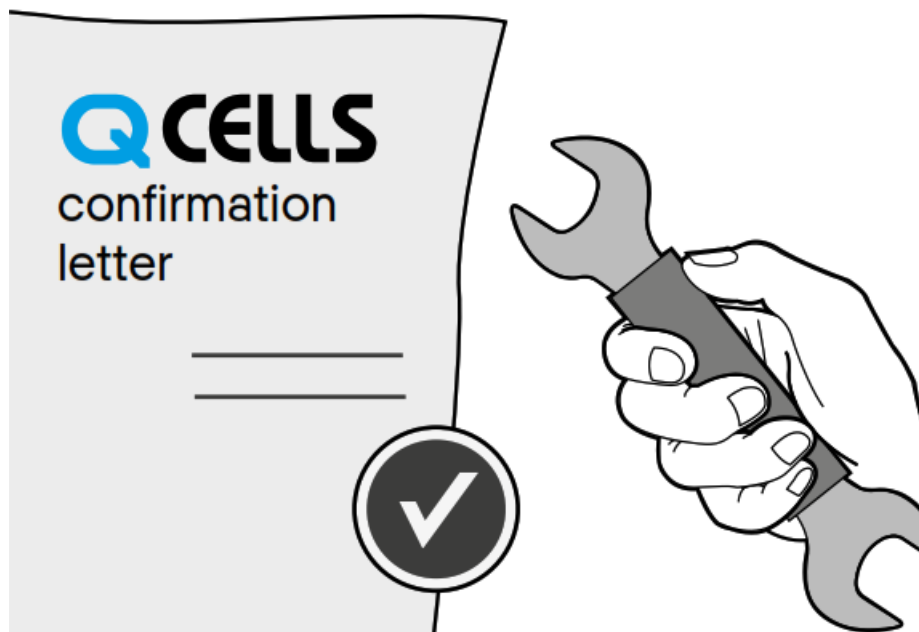
NOTE! Module damage may occur!

- ➔ Never step on modules.
- ➔ Do not subject modules to any mechanical stress.
- ➔ Do not allow any objects to fall onto modules.



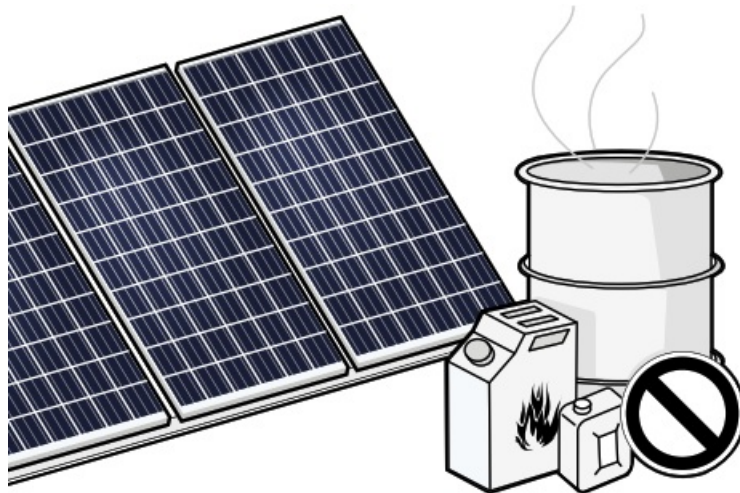
NOTE! Module damage may occur!

- ➔ Only make modifications to the module which have been confirmed in writing by Q CELLS.



NOTE! Module damage may occur!

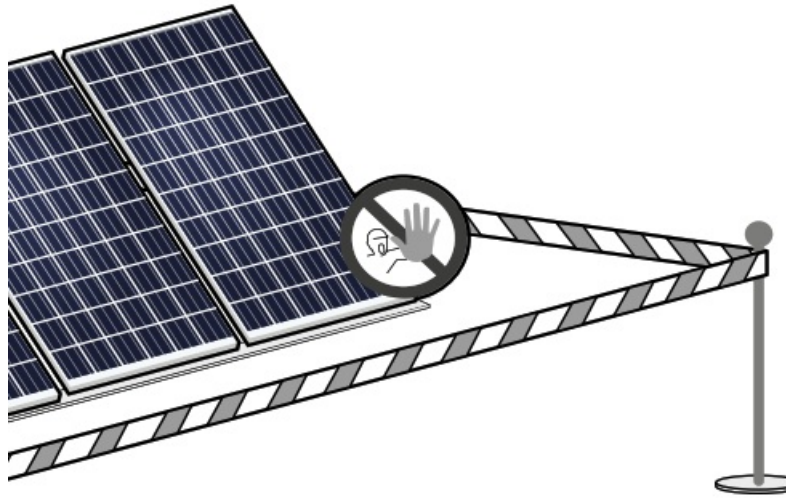
- ➔ Do not install modules near flammable gas/vapors.
- ➔ Do not install modules in close proximity to air conditioning systems.



3.2 PREPARATION OF INSTALLATION

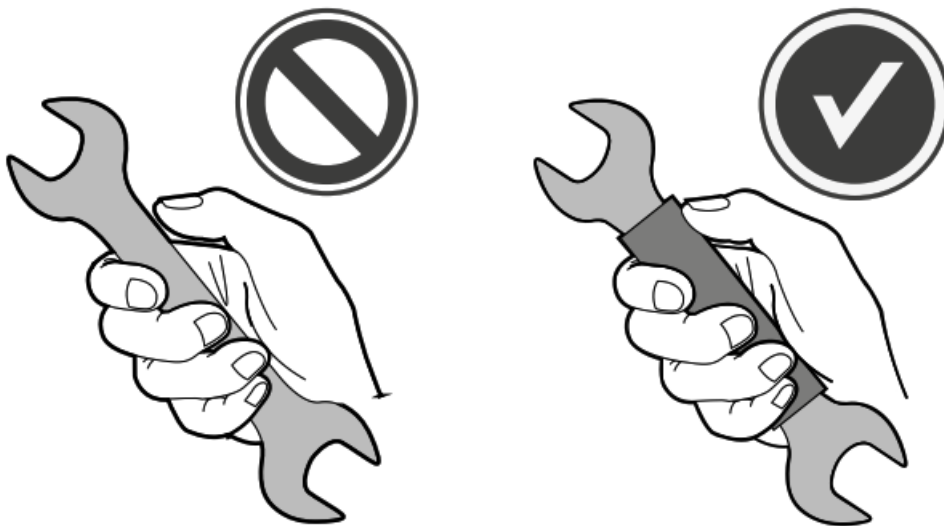
DANGER! Risk of fatal injury due to electric shock!

- ➔ Block off the installation zone.
- ➔ Keep children and unauthorized individuals away from the solar power system.



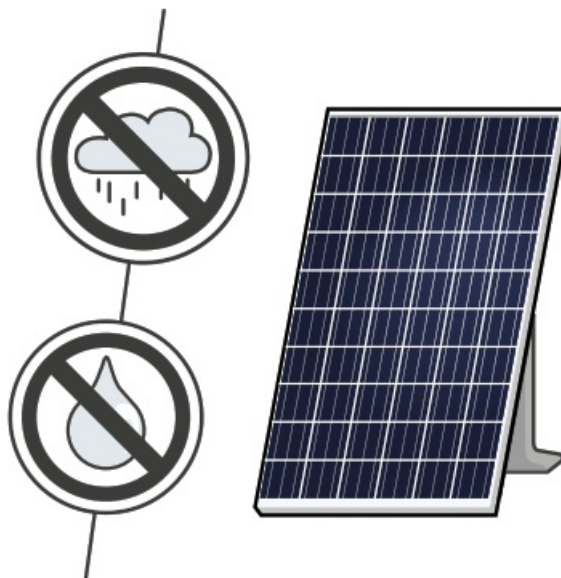
DANGER! Risk of fatal injury due to electric shock!

→ Only use dry, insulated tools.



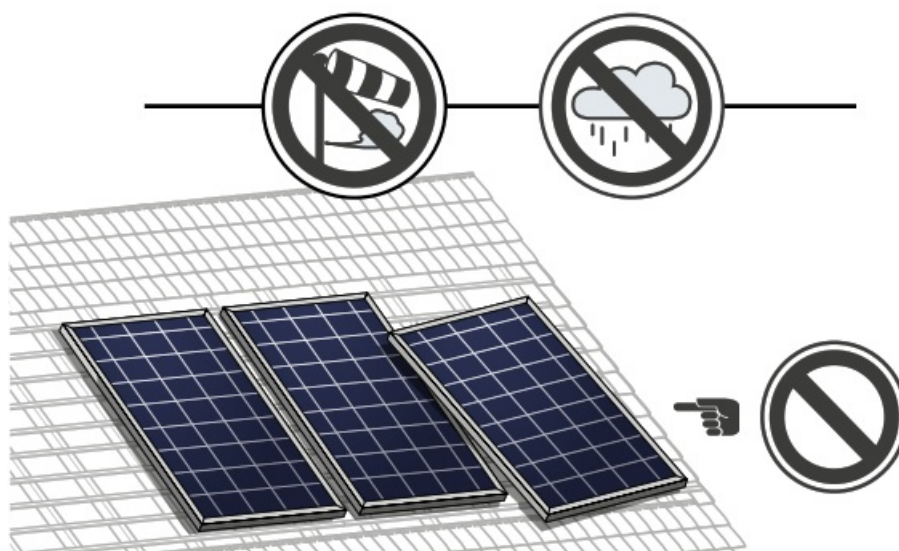
DANGER! Risk of fatal injury due to electric shock!

→ Ensure that modules and tools are not subject to moisture or rain at any time during installation.

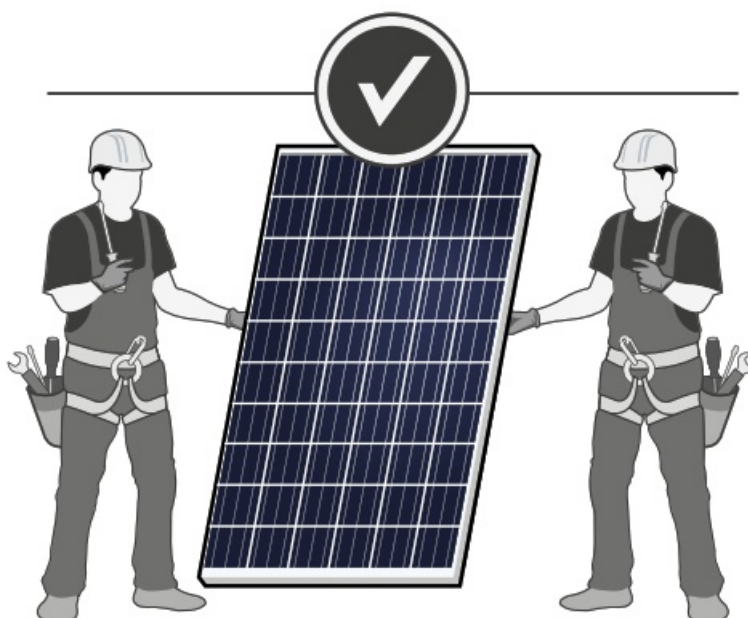


WARNING! Risk of injury due to falling modules!

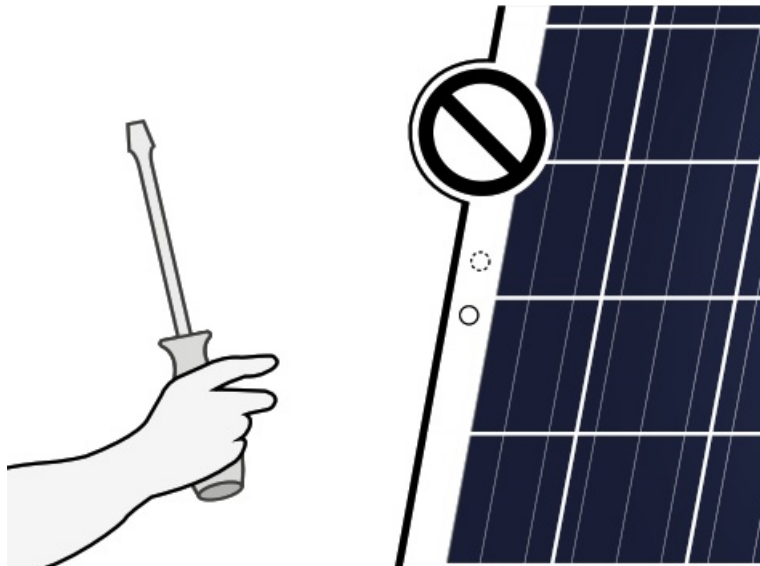
- ➔ Secure modules during installation.
- ➔ Do not install modules in windy or wet weather.



- ➔ Do not carry out the installation alone.



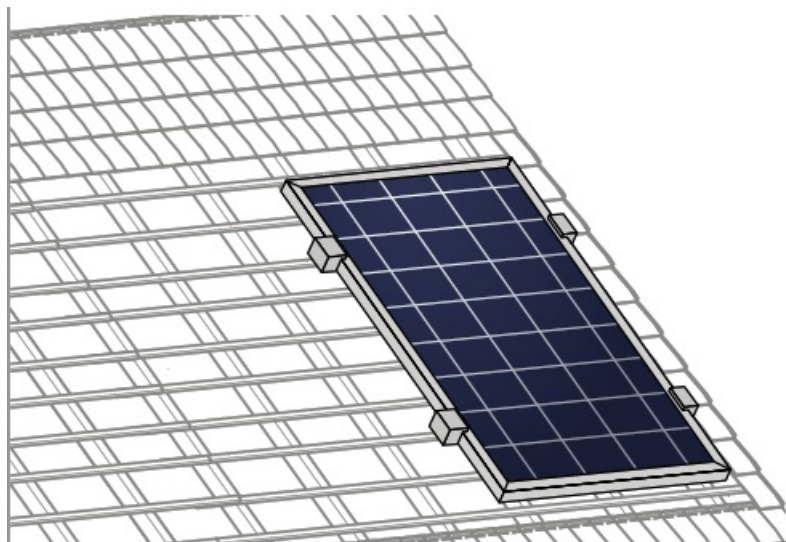
- Only install undamaged modules and components.
- ➔ Do not modify the module (e.g. do not drill any additional holes).



3.3 MODULE INSTALLATION

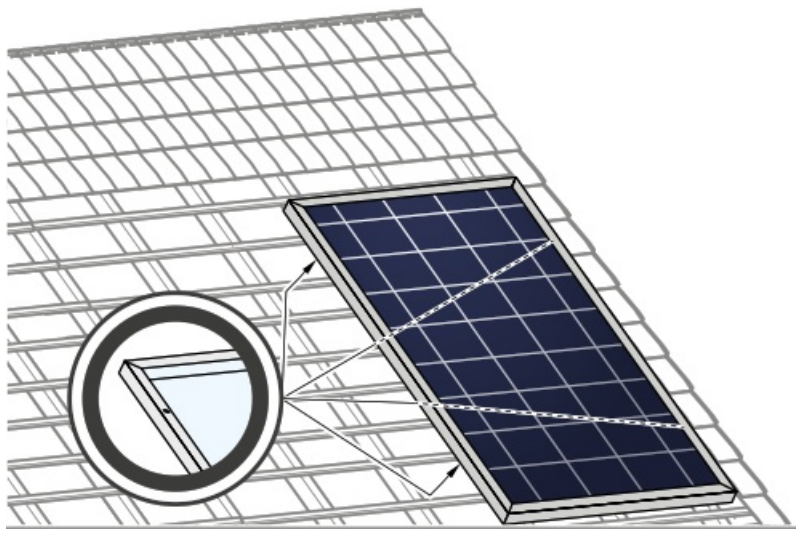
Option 1:

- ➔ Fasten the module with 4 clamps in the specified clamping range, see Fig. 2, p. 7.
- ➔ Tighten clamps according to the manufacturer's instructions.



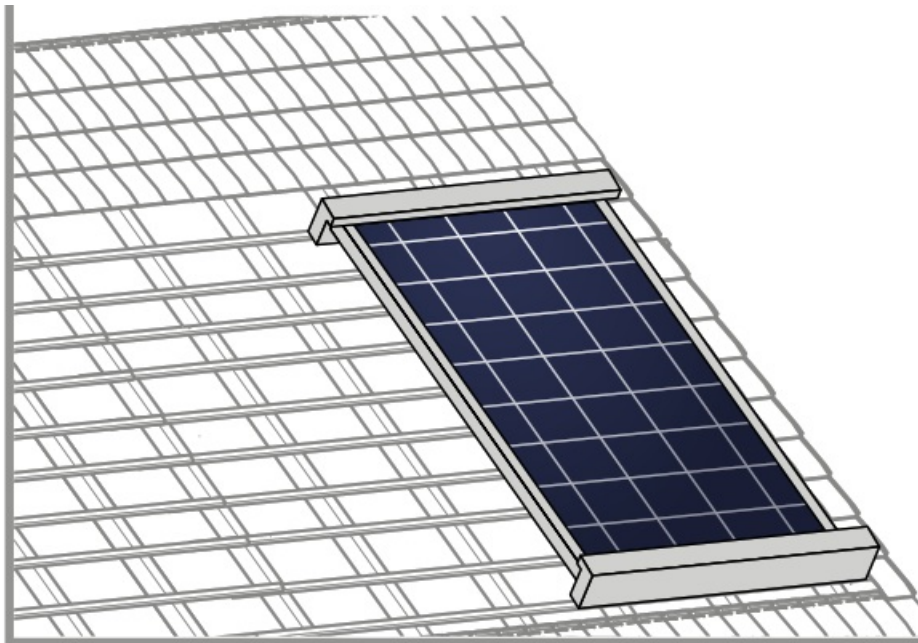
Option 2:

- ➔ Install the module at the 4 mounting points, see Fig. 2, p. 7.
- ➔ Tighten screws according to the manufacturer's instructions.

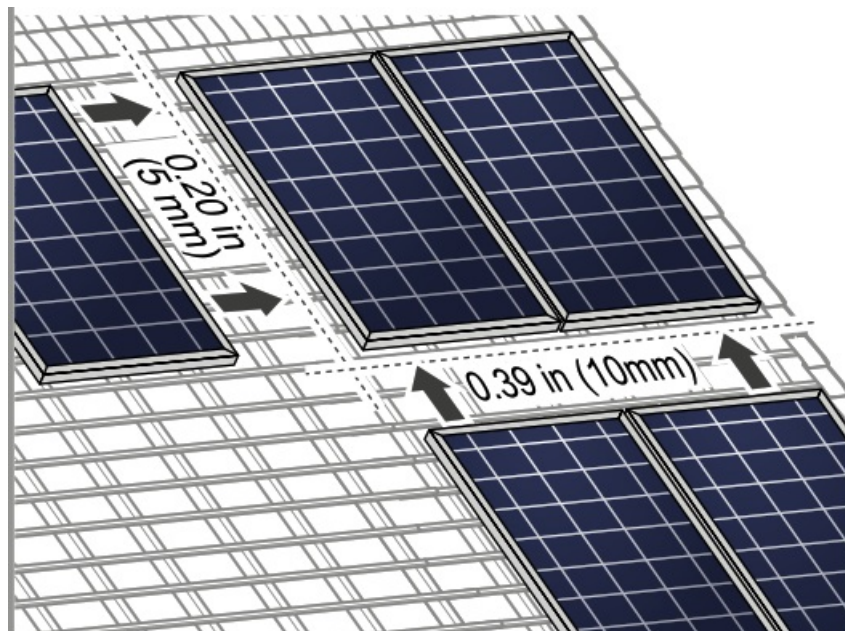


Option 3:

- ➔ Install the module using mounting profiles, see Fig. 2, p. 7.

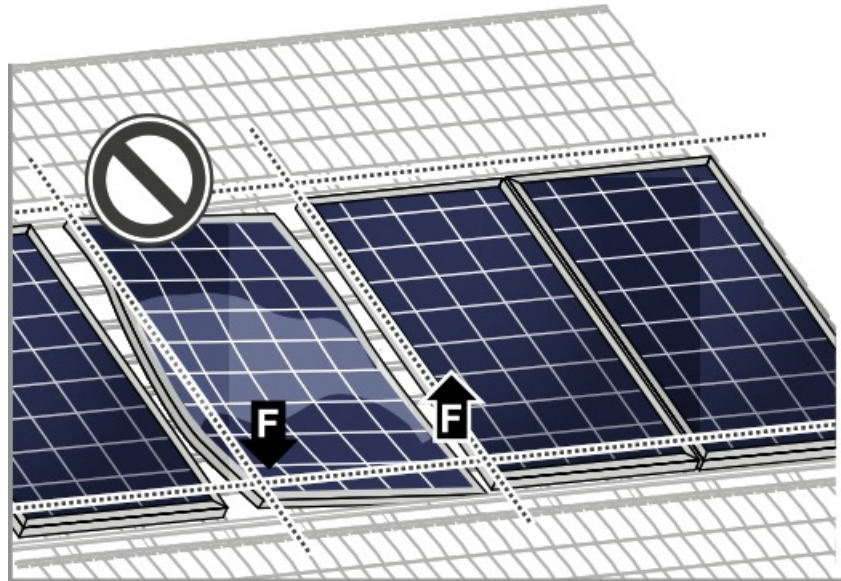


- ➔ Maintain an interval of at least 0.39 in (10 mm) between two modules along the short side and 0.20 in (5 mm) along the long side.



NOTE! Module damage may occur!

- Do not subject modules to mechanical tension.
- Max. torsion 0.12 in / ft (10 mm/m).



ELECTRICAL CONNECTION



4.1 SAFETY

DANGER!

Risk of fatal injury due to electric shock!

When disconnecting an electric circuit carrying direct current, electric arcs can occur that may result in life-threatening injuries.

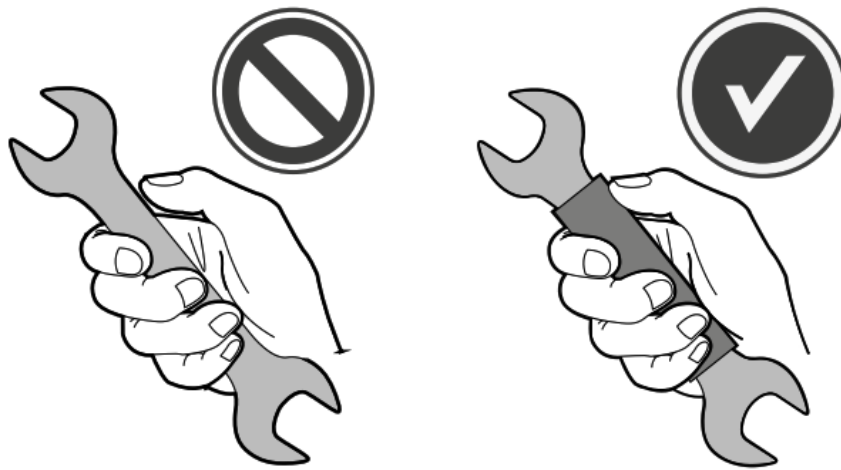
- Do NOT unplug the cable when under load.
- Do NOT connect any exposed cable ends.
- Electrical work may only be performed by qualified and skilled personnel (see page 3).

A solar module generates electrical current and voltage even at a low intensity of illumination. Sparks and electric arcs may result from the separation of a closed circuit. These can result in life-threatening injuries. The danger increases when several modules are connected in series.

- Please be aware of that the entire open circuit voltage is active even at low levels of solar irradiation.
- Please follow the valid national regulations and safety guidelines for the installation of electrical devices and systems.
- Please make sure to take all necessary safety precautions. With module or phase voltages of more than 120 V, the safety extra low voltage range is exceeded.
- Carry out work on the inverter and the wiring with extreme caution.
- Ensure that the modules are disconnected at the inverter prior to separation.
- Be sure to observe the time intervals specified by the inverter manufacturer after switching off the inverter.
- Make sure that the plugs can not be connected unintentionally.
- Before working on the contacts, check them for safety extra-low voltage.

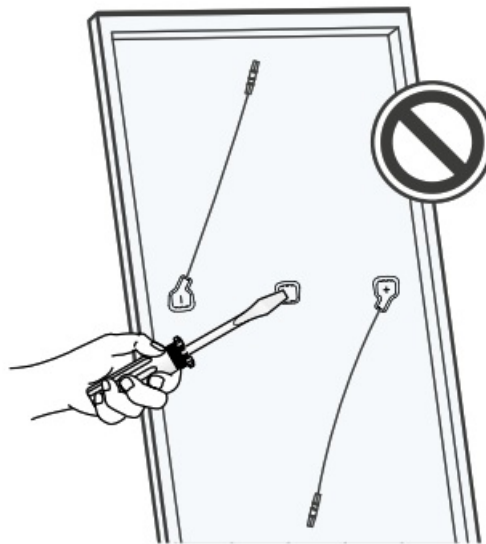
DANGER! Risk of fatal injury due to electric shock!

- Only use dry, insulated tools for electrical work.



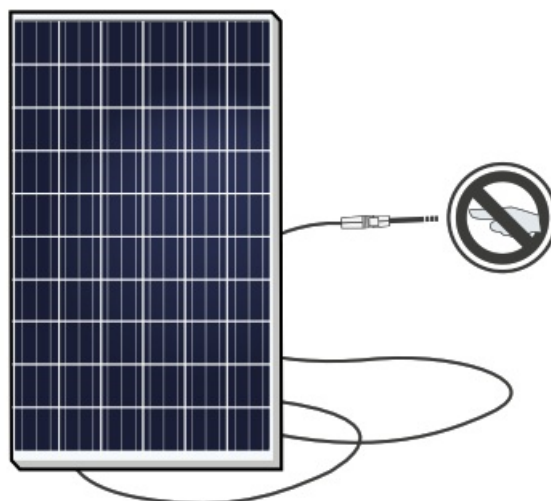
DANGER! Risk of fatal injury due to electric shock!

- ➔ Never open the junction box.
- ➔ Do not remove bypass diodes.



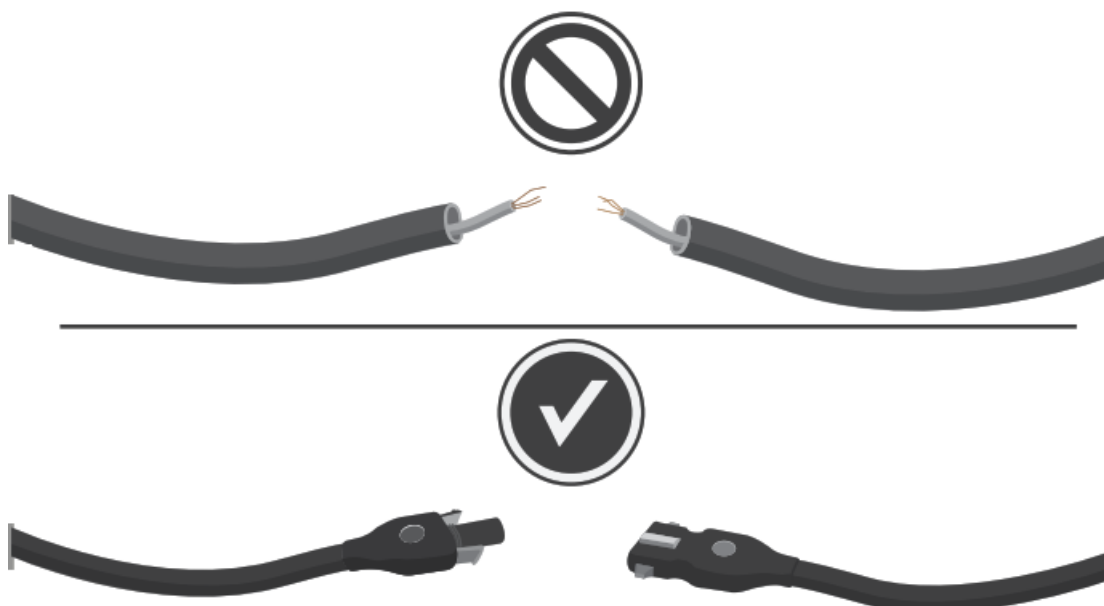
DANGER! Risk of fatal injury due to electric shock!

- ➔ Never touch live contacts with bare hands.
- ➔ Cover connectors by suitable protective caps until installation.



DANGER! Risk of fatal injury due to electric shock!

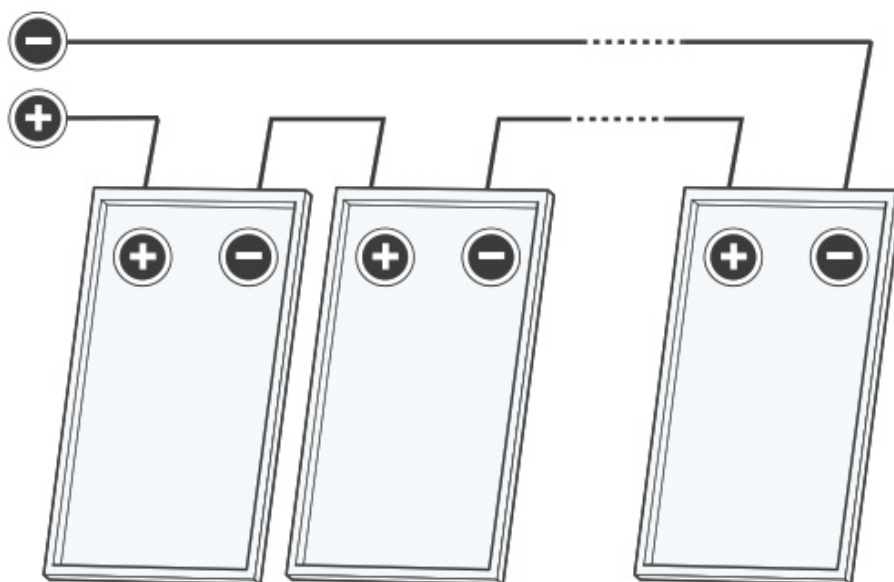
- ➔ Insulate any exposed cable ends.
- ➔ Only connect cables with plugs.



4.2 ELECTRICAL INSTALLATION SAFETY

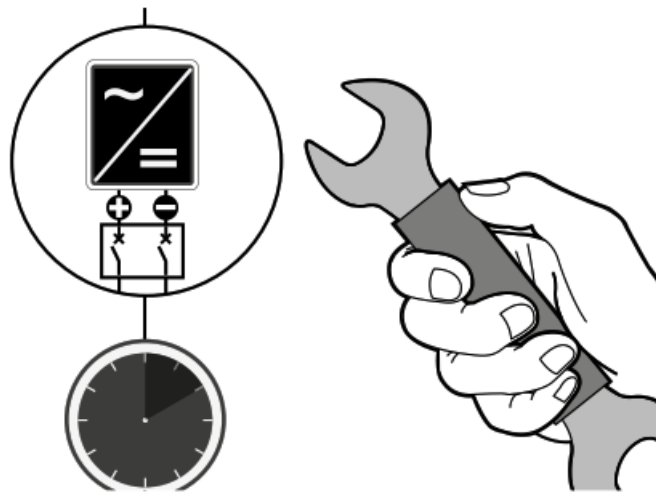
DANGER! Risk of fatal injury due to electric shock!

- ➔ Electrical work may only be performed by qualified and skilled personnel (see page 3).
- ➔ Ensure correct polarity.



DANGER! Risk of fatal injury due to electric shock!

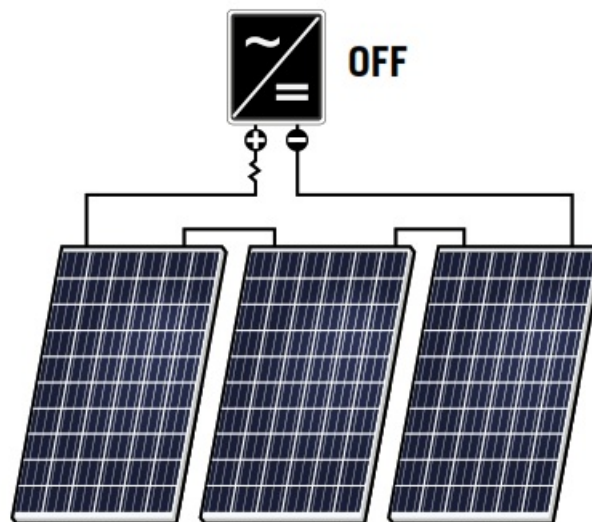
- ➔ Be sure to maintain the time intervals as specified by the inverter manufacturer between switching off the inverter and beginning any further work.



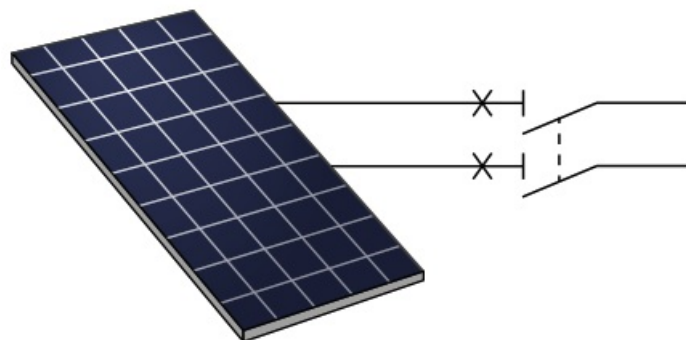
DANGER! Risk of fatal injury due to electric shock!

➔ Never plug or unplug the cable when under load. Modules must not carry any current.

1. Switch off the inverter.



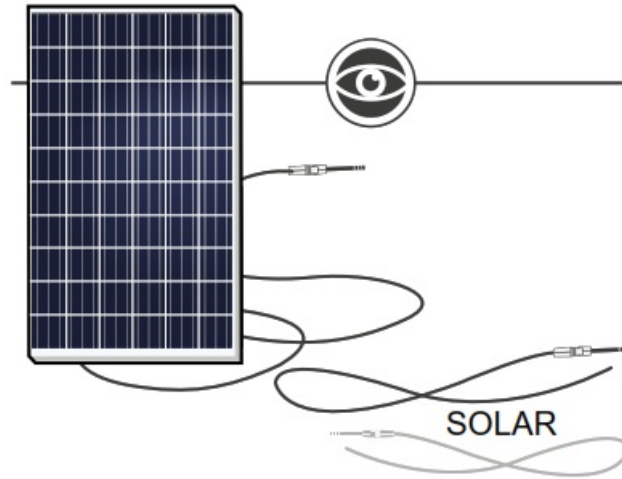
2. Switch off the DC circuit breaker.
3. Measure shutdown in DC String. (no DC current flow).
4. Disconnect plugs by the use of appropriate and qualified tools of the manufacturer.
5. When connecting the modules proceed in reverse order.



4.3 CONNECTION OF MODULES

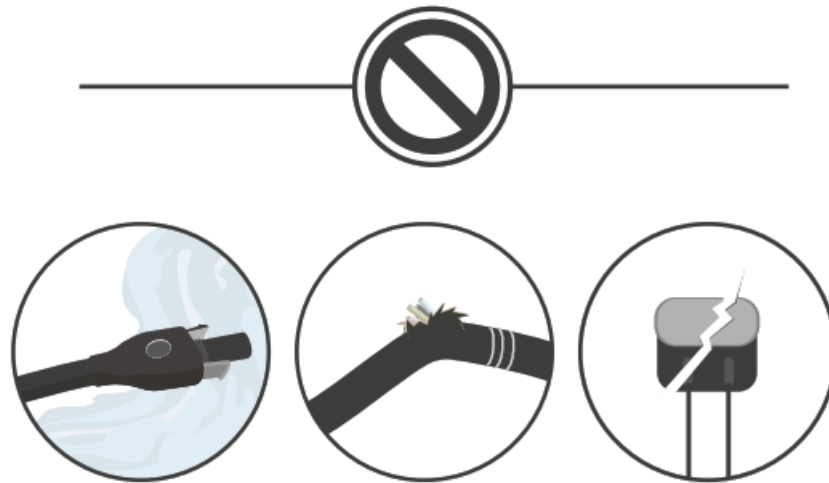
➔ Use solar cables for the connection at the junction box outlet.

- ➔ Only interconnect connectors of the same type and manufacturer.
- ➔ Use minimum No. 12 AWG copper wires insulated for a minimum of 90 °C for field connections.

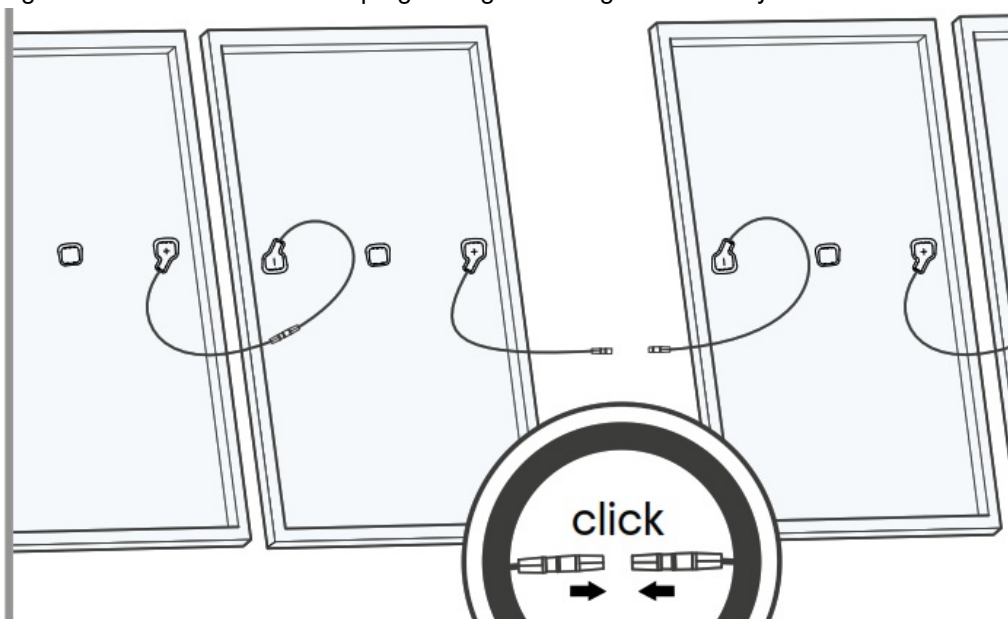


DANGER! Risk of fatal injury due to electric shock!

- ➔ Ensure that all electrical components are in a proper, dry, and safe condition.



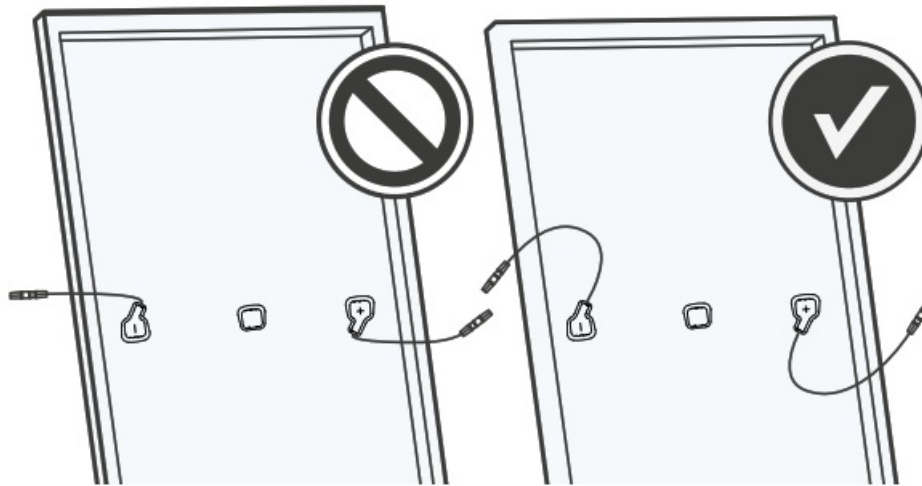
- ➔ Ensure a tight connection between the plugs. Plugs click together audibly.



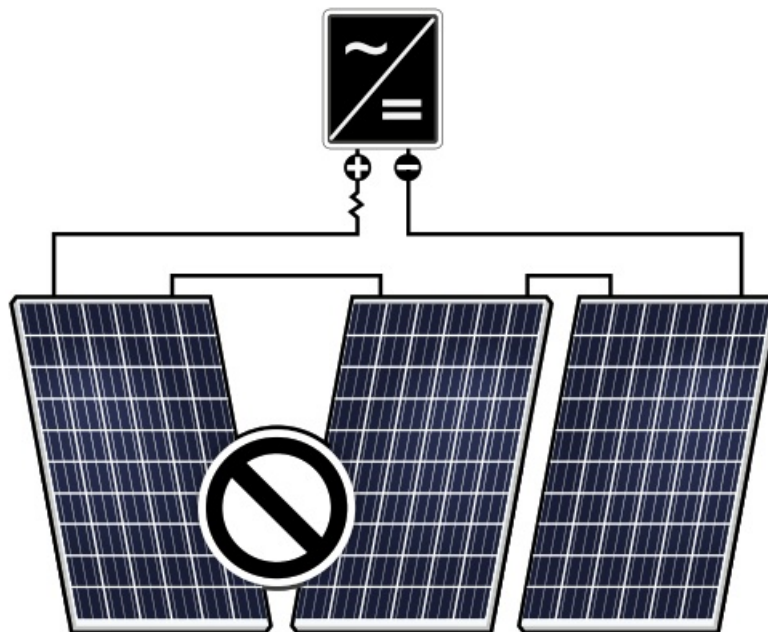
NOTE! Module damage may occur!

- ➔ Ensure that the cabling is not under mechanical stress (Comply with a bending radius of ≥ 2.36 in (60 mm)).

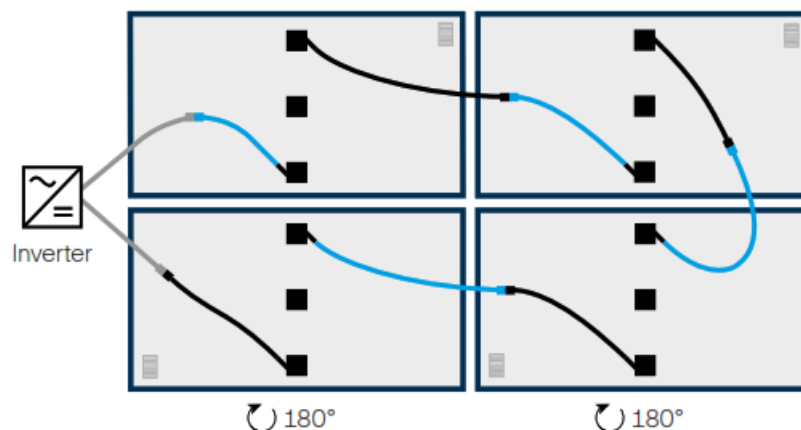
- ➔ Ensure that the cables do not run between the module and mounting rail or structure (danger of pinch).



- ➔ Do not connect modules with different orientations or angles of inclination in the same string.

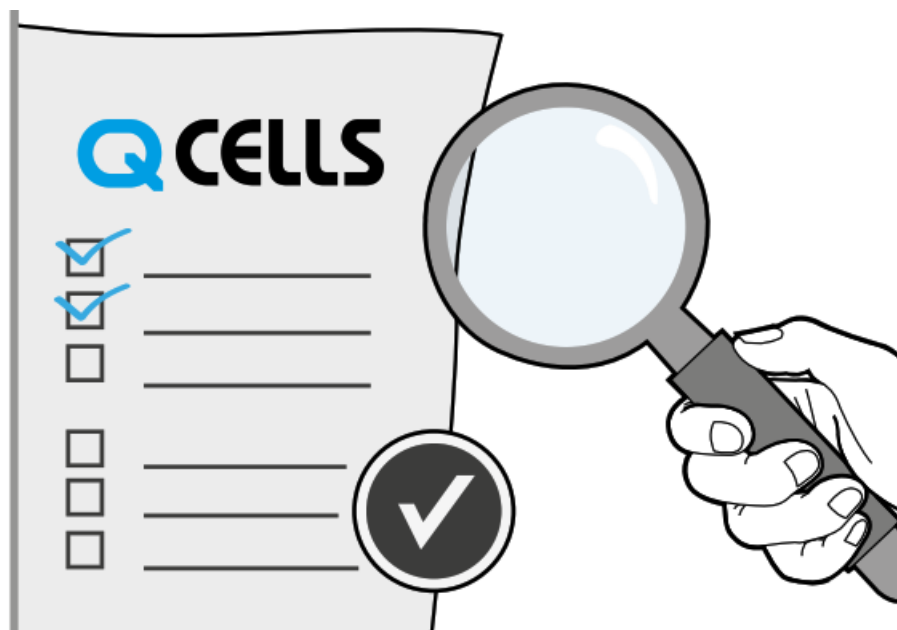


- ➔ To avoid complex cabling arrangements, it is often advantageous to rotate some modules 180°.
- ➔ Module orientation can clearly be identified from the front side by the serial number and barcode labeled behind the module glass on the side with a negative connection cable.

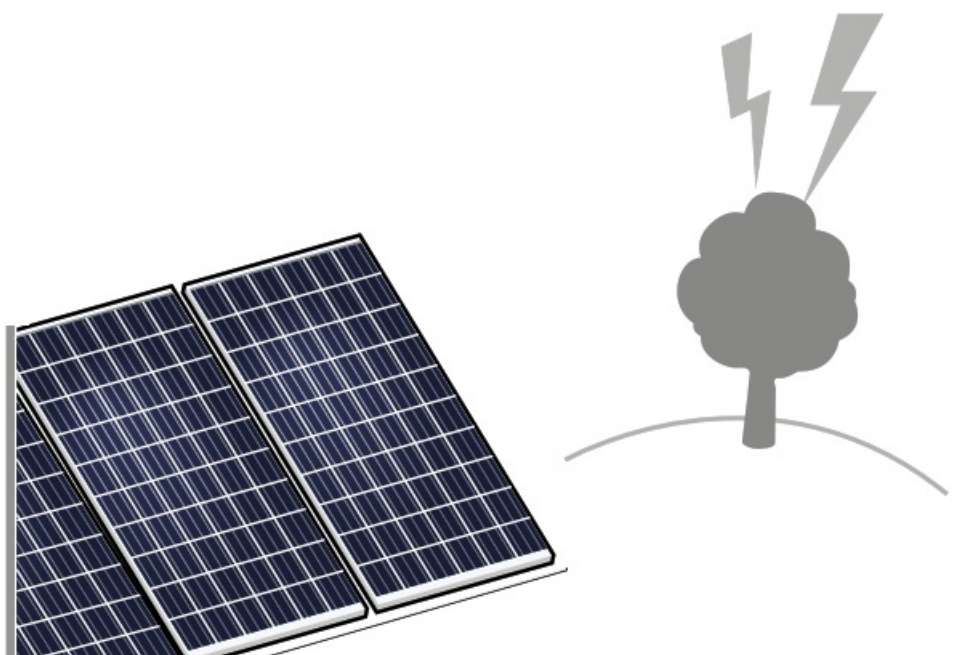


4.4 AFTER INSTALLATION

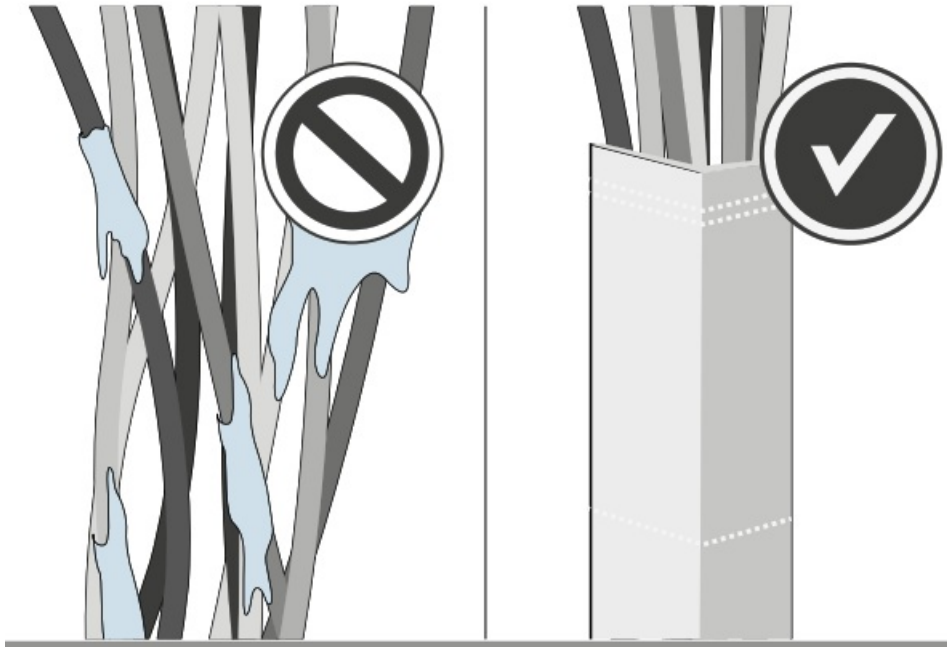
➔ Ensure that all necessary safety and functional tests have been carried out according to applicable standards.



➔ Integrate the system into the existing lightning protection system in accordance with the applicable local regulations.

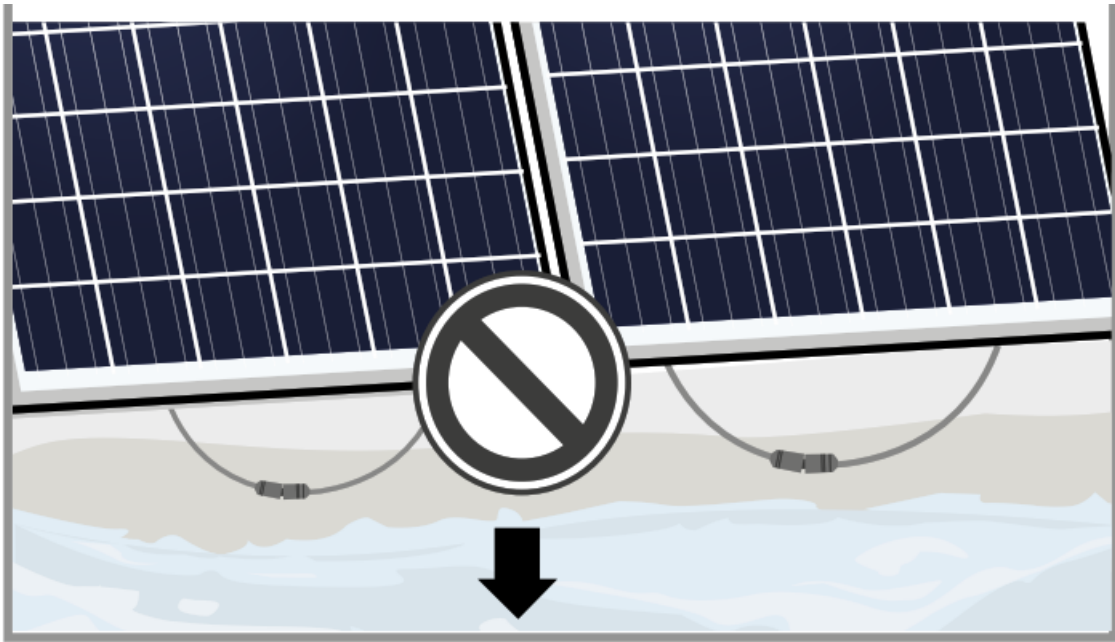


➔ Ensure that the cabling is not exposed and / or hanging and is protected from dirt, moisture, and mechanical friction.



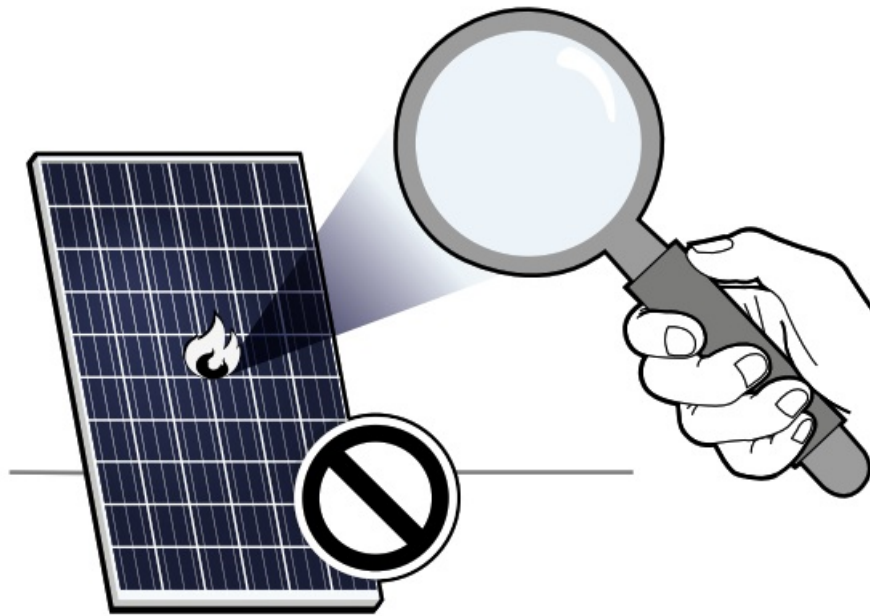
NOTE! Module damage may occur!

- ➔ Ensure that the plug connections are secured away from any water-channelling surface.

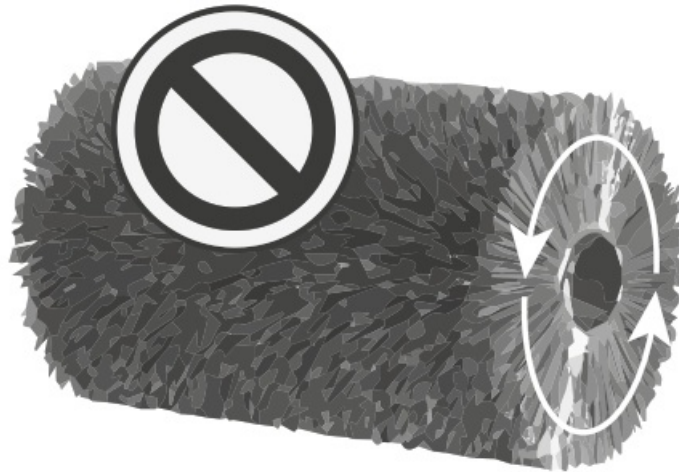


WARNING! Fire Risk!

- ➔ Do not use light concentrators (e.g. mirrors or lenses).



- ➔ No dry cleaning or use of rotating brushes.
- ➔ Modules must be cleaned manually and only with sufficient water.



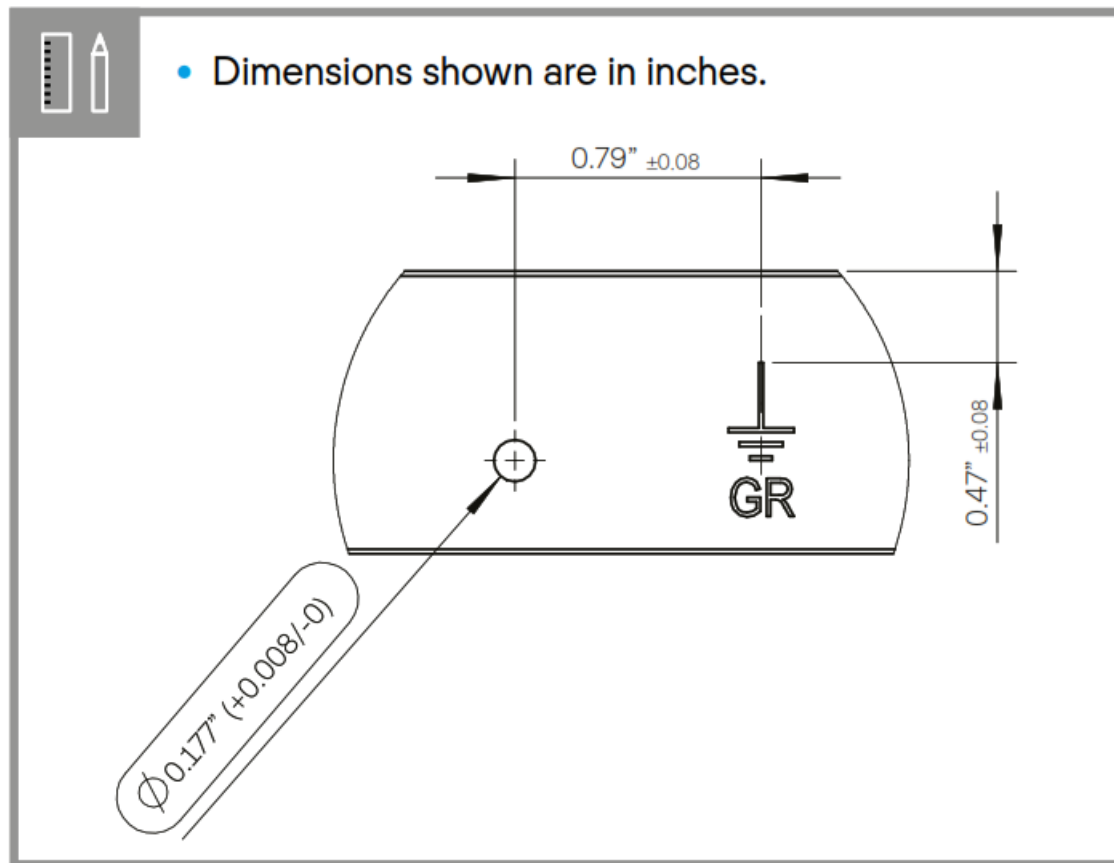
GROUNDING

Protective Grounding

In order to prevent electrical shock or fire, the frame of the module as well as any non-current-carrying metal parts of the system must be grounded. While this section provides some information about grounding the Q CELLS frames and modules, reference should be made to local statutes and regulations for specific requirements on grounding. The U.S. National Electrical Code addresses these issues in Article 250.

Proper grounding is achieved by bonding all exposed non-current carrying metal equipment to the appropriately sized equipment grounding conductor (EGC) or racking system that can be used for integrated grounding.

Q CELLS frames are protected from corrosion with an anodized coating, which has to be penetrated in order to ensure proper bonding. The different methods listed below are suggested methods for an appropriate bond between the frame and the EGC or racking system (that will have to be properly grounded). The method appropriate for any individual installation will depend on multiple factors.



Option A: Use a grounding lug

A listed grounding lug can be bonded to the frame using the grounding holes pre-drilled in the frame. These holes are marked with a ground symbol, as shown below on the frame section drawing: To install the grounding lug, follow the specified instructions of the manufacturer.

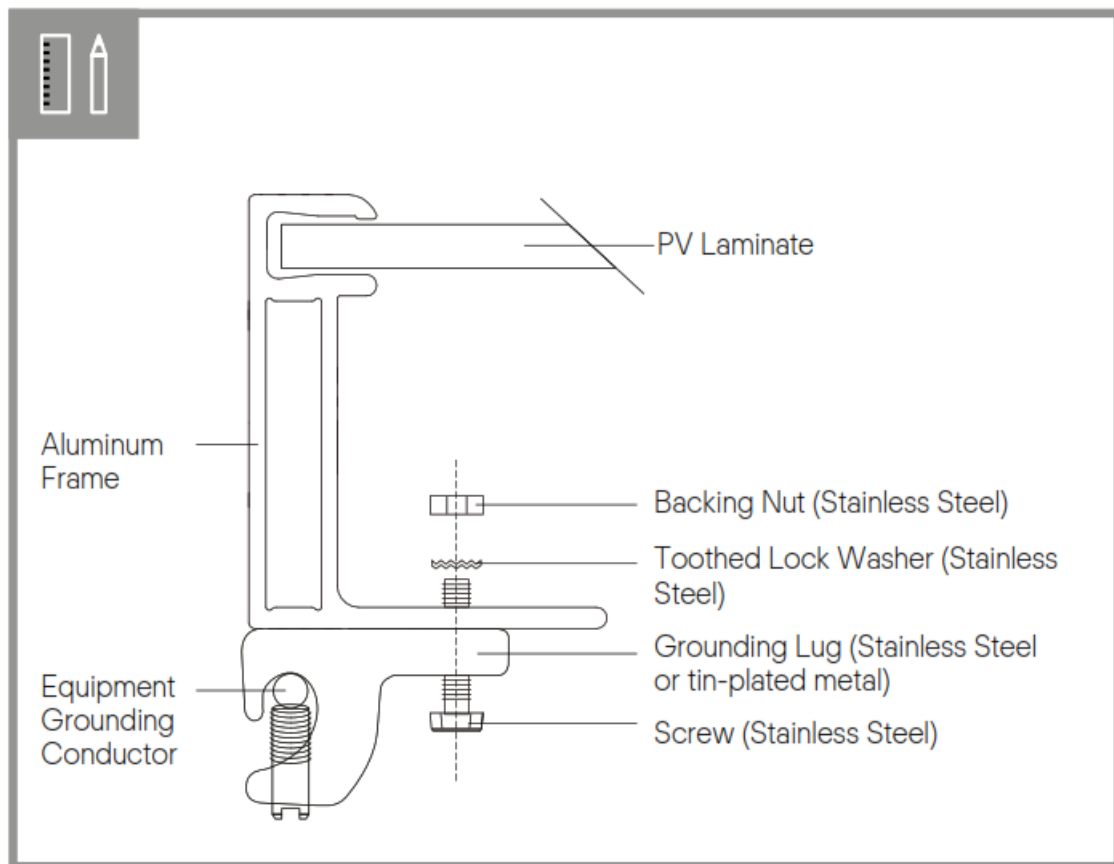
The grounding lug should be made of stainless steel or tin-plated metals such as aluminum to avoid corrosion. The grounding lug should be attached to the frame grounding hole using a stainless steel screw, toothed lock washer, or KEPS nut (in order to penetrate the anodized layer), and backing nut. Care should be taken to avoid the use of grounding hardware of dissimilar metals, which may lead to corrosion.

Option B: Integrated grounding methods

The Q CELLS modules can be bonded with the racking system using UL1703 or UL2703 certified integrated grounding methods. The racking system will then have to be grounded so that the overall system is properly grounded. The listed racking system and grounding device should be installed in accordance with the manufacturers' instructions. An example of such an integrated grounding method is the use of a WEEB clip or Schletter plate between the module and the racking system when mounting the module.

The WEEB washers are generally compatible with Q CELLS modules, however, each combination module/racking system requires a specific WEEB washer size. Note that WEEB clips are intended for single use only; they must not be reused after removal or loosening. Refer to Wiley's installation instructions for the specific use of WEEB washers.

An example of such an integrated grounding method is the use of a washer recognized as meeting UL2703 requirements between the module and the racking system when mounting the module. For example, WEEB washers are generally compatible with Q CELLS modules, however, each combination module/racking system requires a specific WEEB washer size. Note that WEEB washers are intended for single use only; they must not be reused after removal or loosening. Refer to Wiley's installation instructions for the specific use of WEEB washers.



FAULTS AND DEFECTS



DANGER!

Risk of fatal injury due to electric shock!

- ➔ Do not attempt to fix any problems yourself (e.g. glass cracks, damaged cables).
- ➔ Please contact an installer or Q CELLS Technical Customer Service Department.

DISPOSAL

- ➔ Do not disconnect modules yourself.
- ➔ Please commission a trade specialist.
- ➔ Dispose of modules in accordance with the local disposal regulations.

MAINTENANCE AND CLEANING

Q CELLS solar modules are known for a long operating life and minimal maintenance effort and expense. Dirt and grime are usually washed away by rain. If the module is fully or partially shaded by dirt or debris (e.g., plants, bird droppings), it needs to be cleaned to prevent a loss of performance.

Maintenance

- ➔ The PV system has to be inspected regularly by certified personnel.
- ➔ The time intervals and extent of the inspection can depend on local circumstances (e.g. salt, ammonia content in the air, high humidity, etc.). The customer/operator must inform himself about time intervals and the extent of necessary inspections.

- ➔ Inspections have to be performed especially after extraordinary events (e.g. storm, hail, high snow loads, etc.)
- ➔ During the inspections, it has to be checked that the components are secure, undamaged, and clean.

Cleaning



WARNING!

Risk of injury due to hot and live modules!

- ➔ Only clean modules that have cooled down.
- ➔ Do not carry or wear any electrically conductive parts.

WARNING!

Risk of falling due to unsecured access!

- ➔ Never access the installation area alone or without taking adequate security precautions.
- ➔ Please commission a trade specialist.



NOTE!

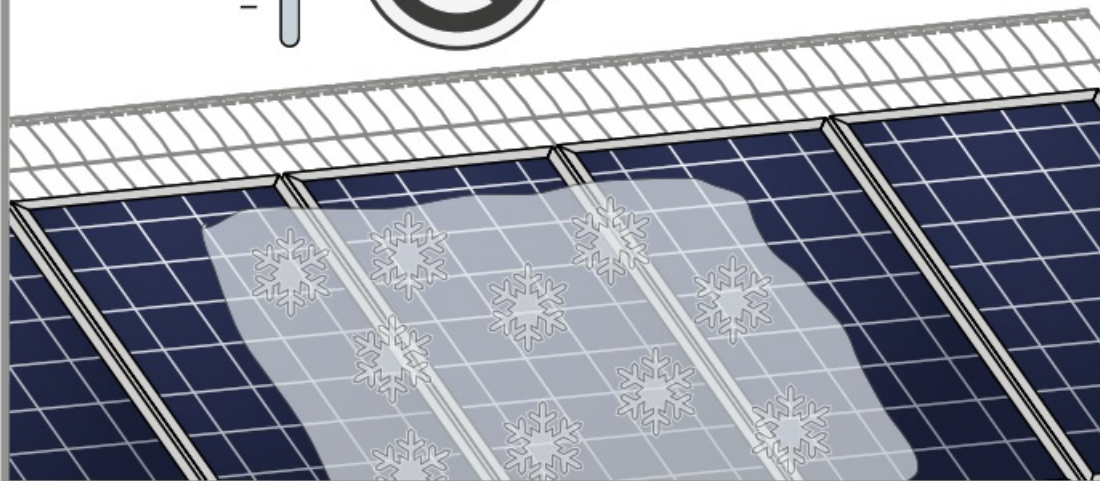
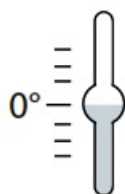
Module surface damage may occur!

- ➔ Remove snow and ice carefully without force (e.g. with a very soft broom).
- ➔ Do not scratch off the dirt.
- ➔ Rinse dirt (dust, leaves, etc.) off with lukewarm water or use, only for the glass surface, an alcohol-based glass cleaner. Do not use abrasive detergents or surfactants for any part of the panel.
- ➔ Use a soft cellulose cloth (kitchen roll) or sponge to carefully wipe off stubborn dirt. Do not use microfleece wool or cotton cloths. Isopropyl alcohol (IPA) can be used selectively to remove stubborn dirt and stains within one hour after emergence.
- ➔ Please follow the safety guidelines provided by the IPA manufacturer.
- ➔ Do not let IPA run down between the module and the frame or into the module edges.



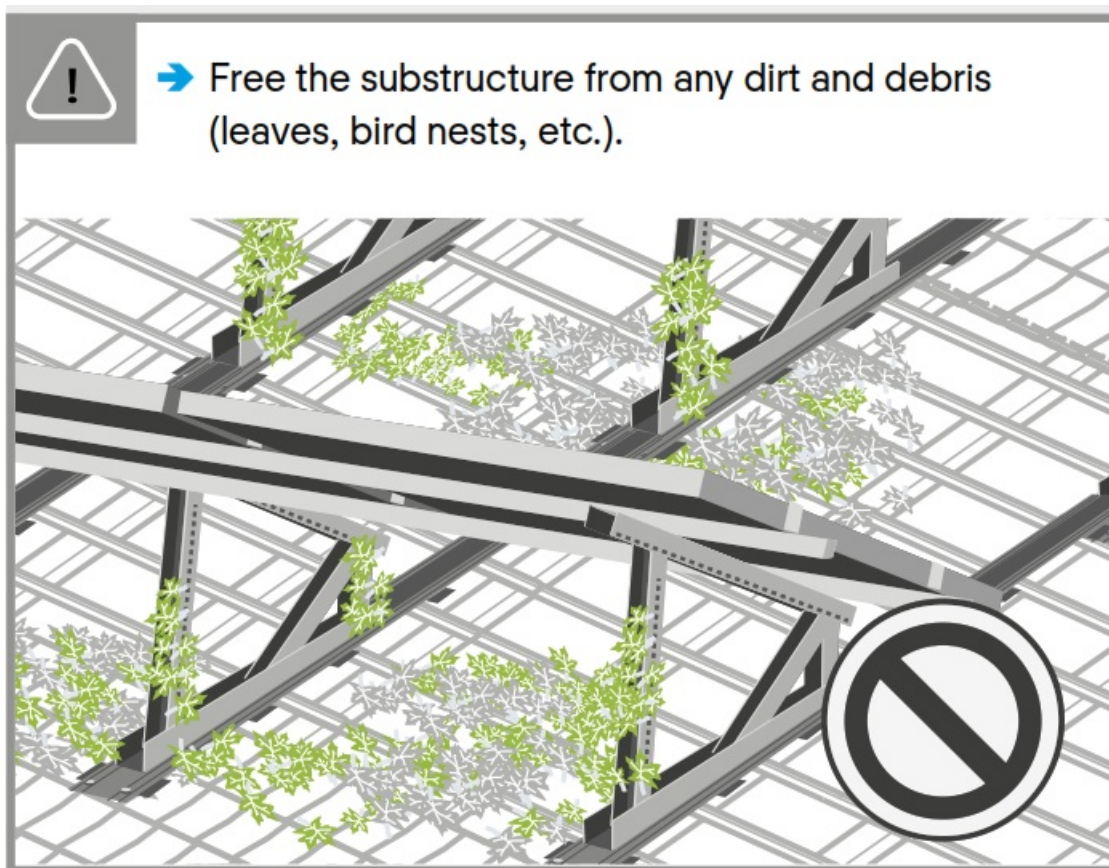
NOTE! Module damage may occur!

- Do not clean modules with water if there is a risk of frost.



- Remove dirt with lukewarm water or alcohol-based glass cleaner, a broom, or a soft cloth.
- Do not use surfactants, rotating brushes, scrapers, or any high-pressure water cleaning equipment.





HANWHA Q CELLS AMERICA INC.

400 Spectrum Center Drive

Suite 1400

Irvine, CA 92618

USA

TEL +1 949 748 59 69

EMAIL inquiry@us.q-cells.com



WEB www.q-cells.us

Subject to change without notice.

© Q CELLS Installation manual solar modules

Q.PEAK DUO ML-G10.X_2021-08_Rev02_NA

Documents / Resources

<p>INSTALLATION AND OPERATION MANUAL</p> <p>Q.PEAK DUO ML-G10.X Solar Module Series</p>  	<p>Q CELLS Q.PEAK Duo ML-G10.X Solar Module Series [pdf] User Manual</p> <p>Q.PEAK Duo ML-G10.X Solar Module Series, Q.PEAK, Duo ML-G10.X, Solar Module Series</p>
---	--