

Pytes TMR-190 Lithium Battery and MPP Inverter Instruction Manual

Contents

1 TMR-190 Lithium Battery and MPP Inverter

1.1 Installation and configuration manual With for Pytes Lithium Battery V Series & MPP Inverter

2 BOM List

2.1 How to Install

2.2 1.Communication Cable

2.3 RS485 port definition

2.4 2.Power Cable Connection

2.5 Step.1

2.6 Step.2

2.7 Step.3

2.8 3. Communication Cable Connection

2.9 Step.2: Cable Connection

2.10 4. Set the DIP Switch

2.11 5. Start Up the System

2.12 6. Change the Battery Setting of The Inverter

3 Documents / Resources

3.1 References

4 Related Posts

TMR-190 Lithium Battery and MPP Inverter



Installation and configuration manual With for Pytes Lithium Battery V Series & MPP Inverter



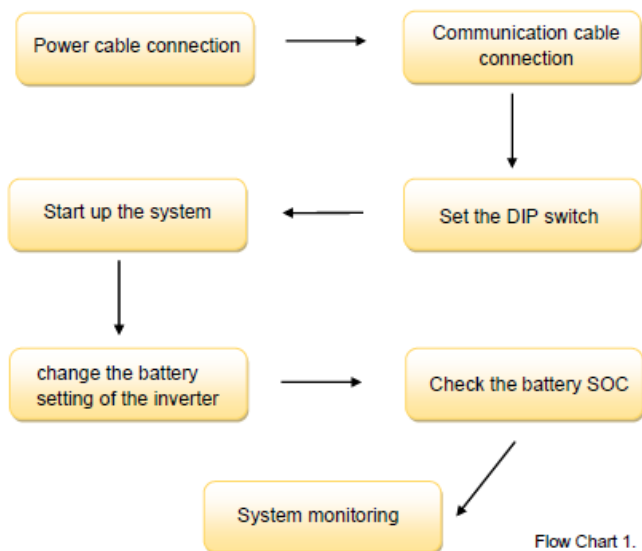
BOM List

Before installation, you should prepare following items as shown in Graph 1.

Item	Remarks	Quantity
Power Cable (DC)	<input type="checkbox"/> Conductor cross-section: UL10269-1/0AWG-200mm Amphonel 8.0mm Or TMR-190*25*18mm Cable diameters: 14 mm to 25 mm Only copper cables may be used. The DC cables must be sized for the maximum battery voltage and the maximum battery current.	Depends on the number of batteries and the connection method
RJ45 Cable	RS485 communication Terminal (RJ45 port) follow RS485 protocol, to output batteries information.	1
PC (Personal Computer)	Self-Provide.	1
Battery	V series	Depends on the number of batteries and the connection method
Inverter	MPP Inverter	1

Graph 1.

How to Install



CAUTION: If you want to get more inverter-related settings, please refer to the inverter user manual first.



1.Communication Cable

Definition RS485 Port Pin for BMS is as follow.

RS485 port definition

Version	Pin number of com. cable
V version	

Pic 2

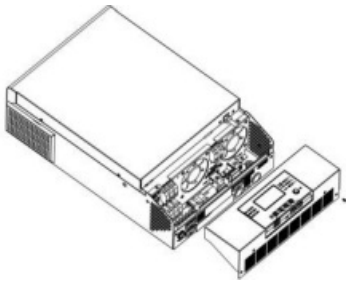
2.Power Cable Connection

Step.1

Before connecting all wirings, please take off bottom cover by removing two screws as shown Pic 4.1.

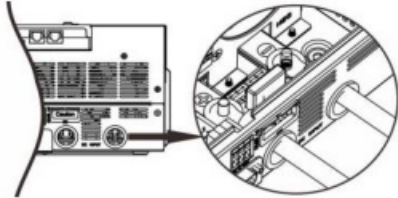


Step.2



Pic 4.1

Connect the red and black cables to the inverter DC connector as shown in Pic 4.2.

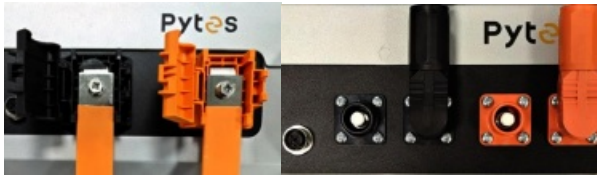


BATTERY+BATTERY-Pic 4.2

Step.3

At the other end of the cable, connect to the battery as shown Pic 4.3.

Ensure that the battery power switch is off



5

Pytes

Pic 4.3

3. Communication Cable Connection

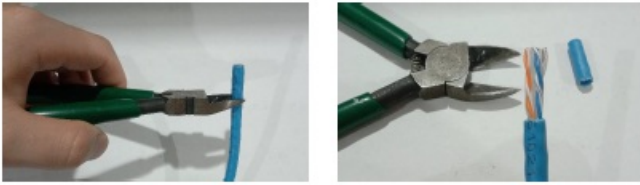
Step.1: Wire Set Up

a): Prepare one cable, one clamp and one scissor as shown in Pic 5.1.1.



Pic 5.1.1

b): Cut the cable skin at both ends to expose the wires as shown in Pic 5.1.2.



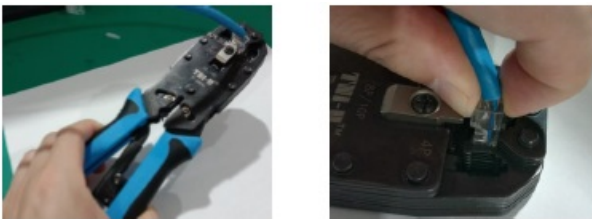
Pic 5.1.2

c): Arrange wires sequence according to pic2.(1-3,2-5)

d): Check the battery wire sequence.

e): Insert battery wire lines and inverter wire lines respectively into crystal heads.

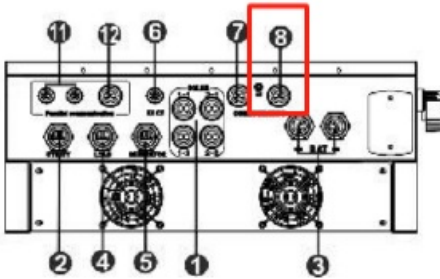
f): Clamp two crystal heads tightly and take them out as shown in Pic 5.1.3.



Pic 5.1.3

Step.2: Cable Connection

Connect the inverter end of the cable to the inverter BMS port as shown in Pic 5.2.1. Make sure which communication port to use.



Pic 5.2.1

Connect the battery end of the cable to the battery communication port as shown in Pic 5.2.2 (Ensure the correct sequence of wires inside the communication cable).



Pic 5.2.2

Pic 5.2.2

4. Set the DIP Switch

Set the 1st dipswitch up and the rest of the switches down. Only the master battery requires the dip switches adjusted as shown in Pic 6.1

Version	ADD setting
V version	

Pic 6.1

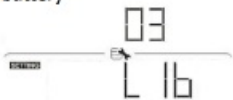
5. Start Up the System

Start up the inverters and batteries.

6. Change the Battery Setting of The Inverter

※CAUTION: If you want more details about the batteries settings please check the operating manual of inverters.


Choose L16 in programme 3. (Some Mpp models will have this battery type setting in programme 5.)

03	Battery type	<div>Lib-protocol compatible battery</div> 	Select "Lib" if using Lithium battery compatible to Lib protocol. If selected, programs of 4, 7, 8 and 9 will be automatically set up. No need for further setting.
----	--------------	--	---

Pic 8.1

END

Documents / Resources

	<p>Pytes TMR-190 Lithium Battery and MPP Inverter [pdf] Instruction Manual TMR-190, 25, 18, TMR-190 Lithium Battery and MPP Inverter, TMR-190, Lithium Battery and MPP Inverter, MPP Inverter</p>
---	---

References

- [User Manual](#)