



Pytes BMSQt Energy Storage System User Manual

[Home](#) » [Pytes](#) » **Pytes BMSQt Energy Storage System User Manual**

Contents

- 1 Pytes BMSQt Energy Storage System
- 2 INSTALLATION INSTRUCTION
- 3 Documents / Resources
- 4 Related Posts



Pytes BMSQt Energy Storage System



INSTALLATION INSTRUCTION

NOTE

Recommended operating environment

- **Operating system:** Microsoft
- **Monitor resolution:** 1920*1080
- **Scale:** 100% or 125%
 - User have to install the 232 serial port driver before using this program.
 - Compatible battery system: A version; B version; C8 version.

- 1. Turn on the battery.**

You have to wait all batteries start up if the system has multiple batteries in parallel.

2. Connect the USB-to-RJ45 communication cable.

Plug the USB terminal to the PC and the RJ45 terminal to the console port.

3. Start the program BMSQt.exe.

Double click BMSQt.exe to start the program. The program's interface presents in Figure 1.

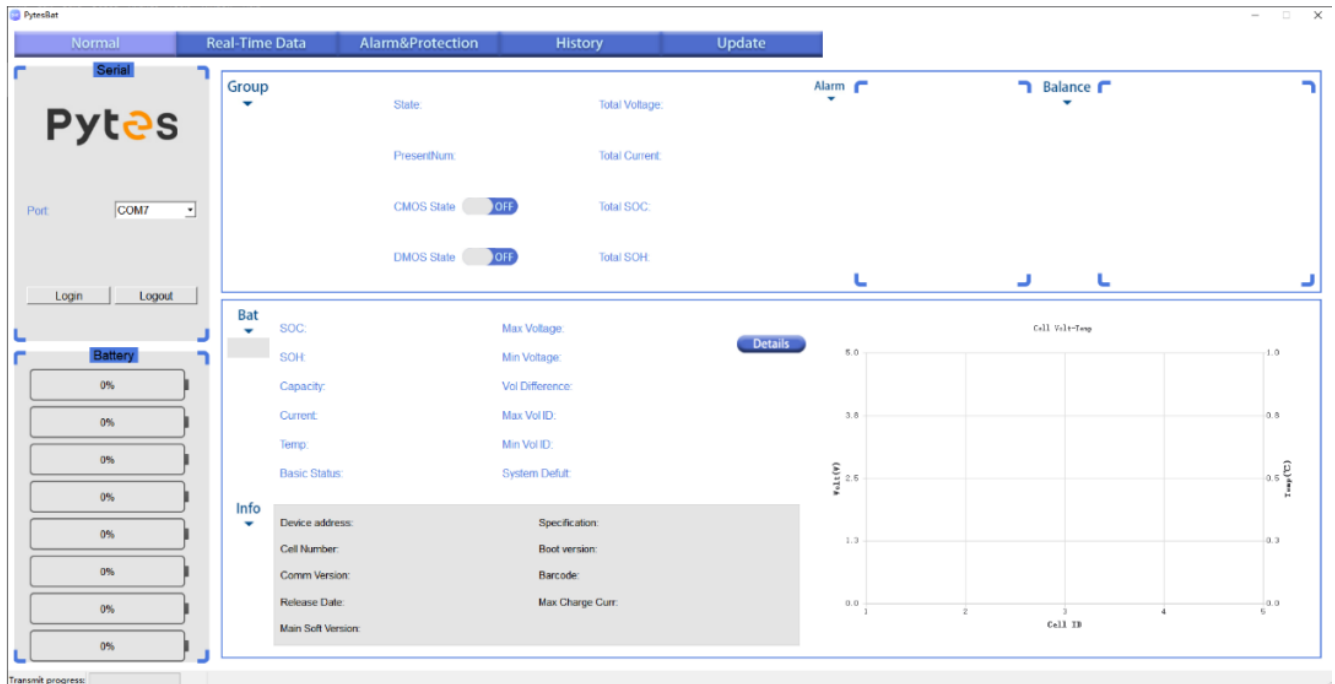


Figure 1

4. Basic functions

The user can click on Normal, Real-Time Data, Alarm&Protection, History and Update button to switch the page.

- Normal—This page show the basic information of battery and the whole group.
- Real-Time Data—Monitoring the data of single battery.
- Alarm&Protection—This page show the parameter of battery settings.
- History—Check the records of error information.
- Update—Update the firmware of battery.

5. Build the connection

User should choose the right COM Port. Then, click Login button to connect the battery with your PC. The program would start to retrieve the information of battery in real time as shown in Figure 2. Click Logout to disconnect.

- If there are several options of COM, you can judge it through plug and unplug USB terminal of RS232 cable.



Figure 2

6. Normal page (Figure 2)

- Battery section——It can present the SOC of max. 8 pcs batteries.
- Group section——You will see the information of the whole battery group.
- Bat section——To present the information of single battery. You can choose the battery number in Group section to check. And the voltage and temperature of 16 pcs single cells are also shown in this part.
- Details——The line chart and the table can be switched to view through the Details button.
- Add——This button only appear when the barcode of this battery lost. You can click it to input 16 characters (e.g. LC0B0010402230201). As shown in Figure 3-
 - (*Barcode can be found silver sticker on the shell of each battery)

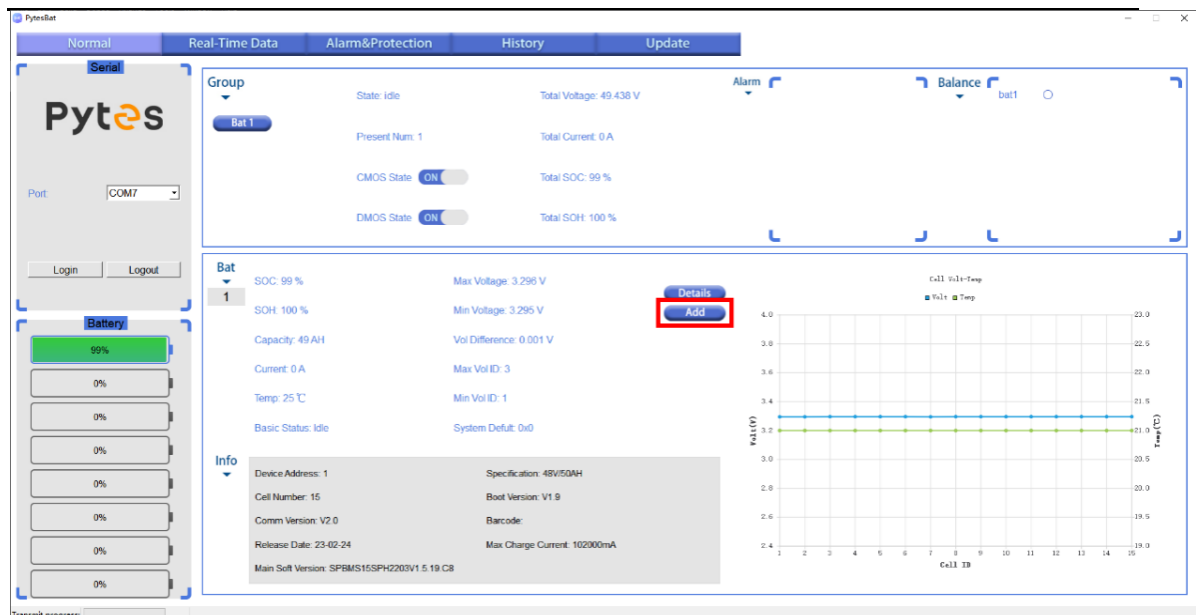
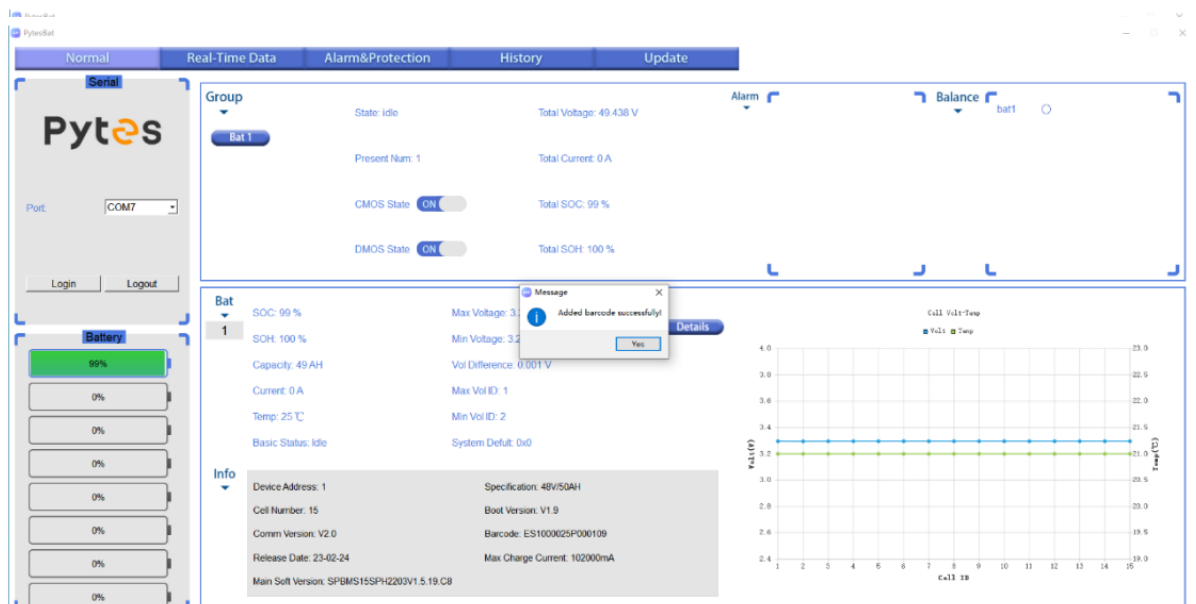


Figure 3



Figure 4



7. Real-Time Data (Figure 6)

There are four curves in this page to present the SOC, Voltage, Current and Temperature of single battery that you chose in the normal page. The specific value will be displayed when you move the mouse pointer.

- RTdata ON——Start to record the charge or discharge data in real time.
- RTdata OFF——Stop to record the data.
- Download——Download the record data into txt formal files.
- Clean All——Clean the records before start the next records.

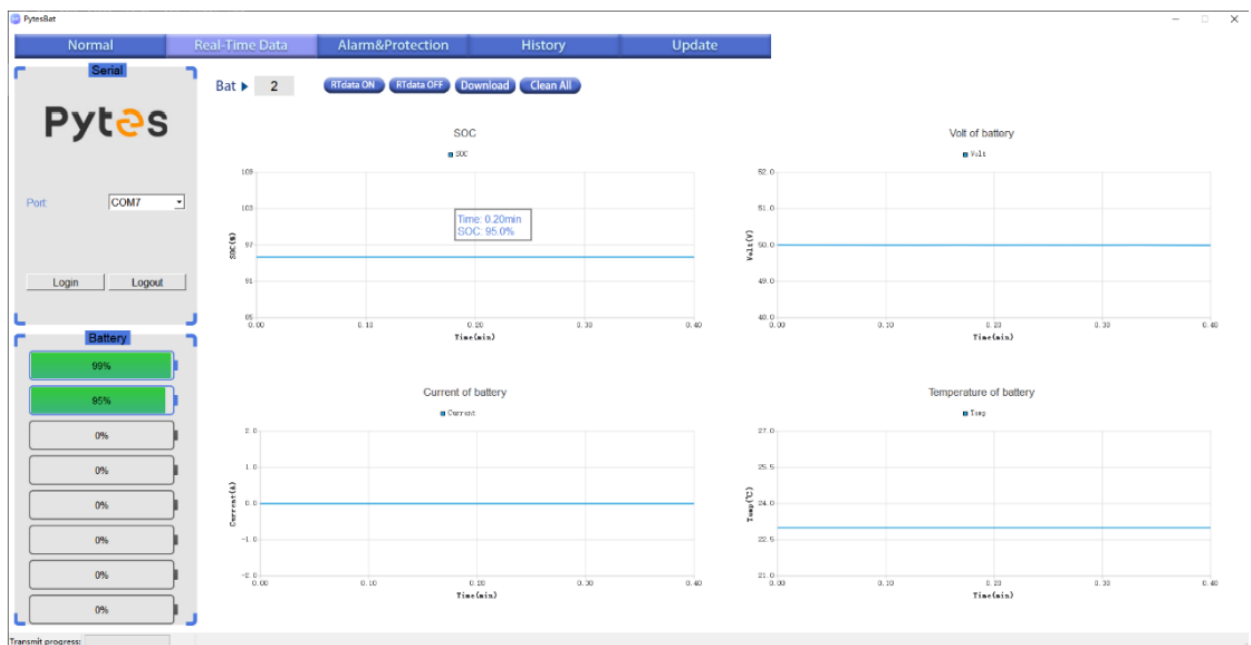


Figure 6

8. Alarm&Protection (Figure 7)

Users can view the configuration information of the current battery. If the configuration information is incomplete or not displayed, click the alarm&protection button again. Then, click the download button to save the configuration information in txt format.

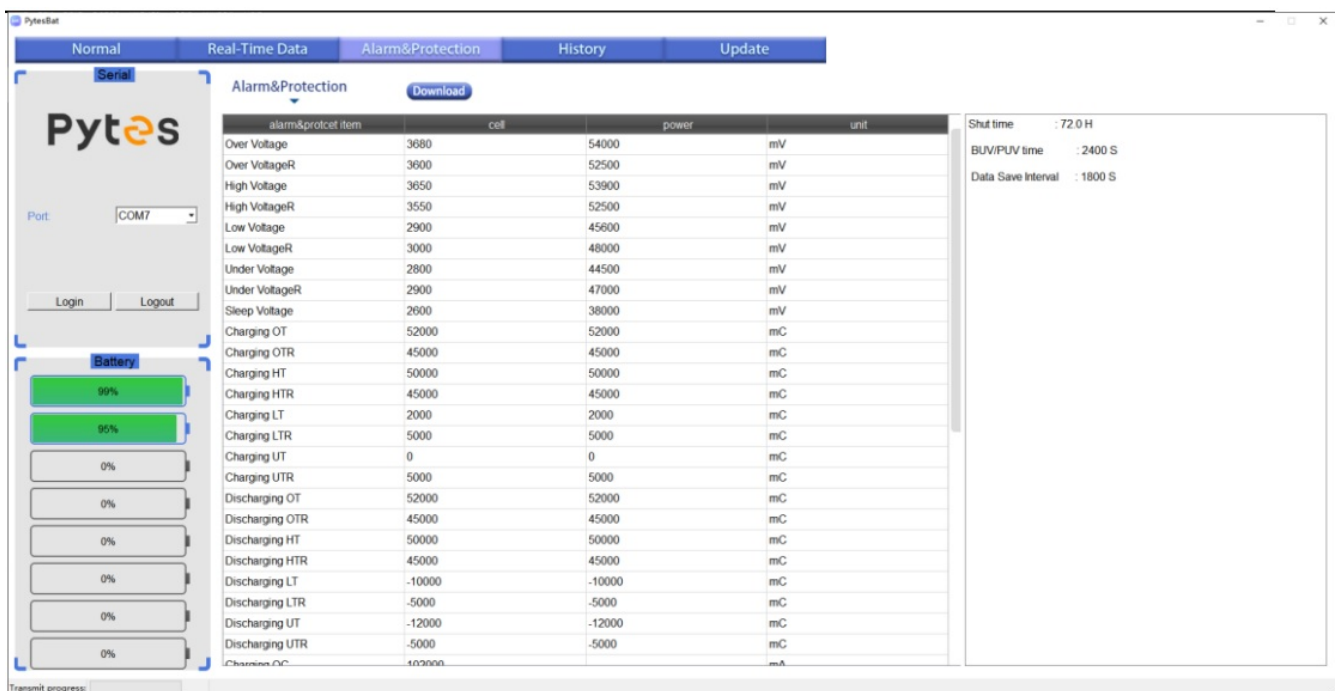


Figure 7

9. History (Figure 8)

- Event num——Quantity of historical alarm
- Event——Click it to get 15 records of alarm.
- Continue——Keep on clicking it in 10s after click event button to get more records until all records are displayed.
- Refresh——Clean all records before check the other battery.
- As shown in Figure 8, double-click any historical event to view the detailed information of it.
 - If you want to check the other battery's alarm records, you have to plug the RS232 cable to the other battery.

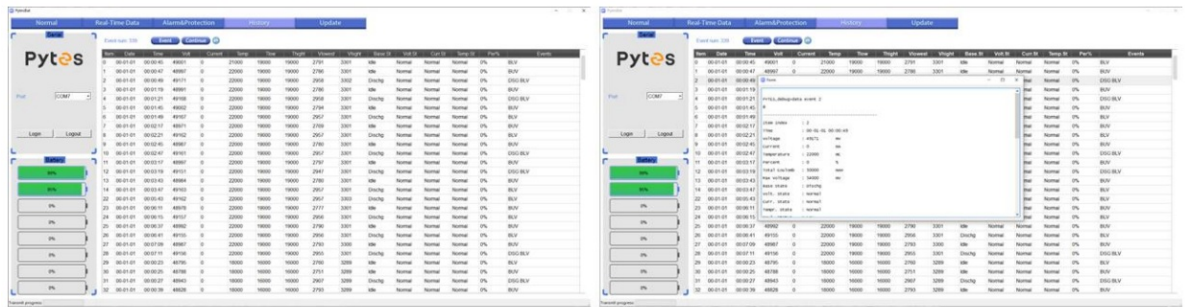


Figure 8

10. Updata (Figure 10)

There are three function button in this page including Updata, Wake and Uboot.

Update procedure (Figure 10)

click “updata” button——input password “123456”——upload the right firmware——waiting for initial configuration

Uboot procedrure (Figure 10)

click “uboot” button——input password “123456”——upload the right bootloader——waiting for initial configuration



Figure 10

11. Wake procedure (Figure 11)

You have to wake battery when reminding the update error. Switch on power button——press the SW button (red button)——click wake button within 5 sec If wake up successfully, you can re-upload the right firmware.

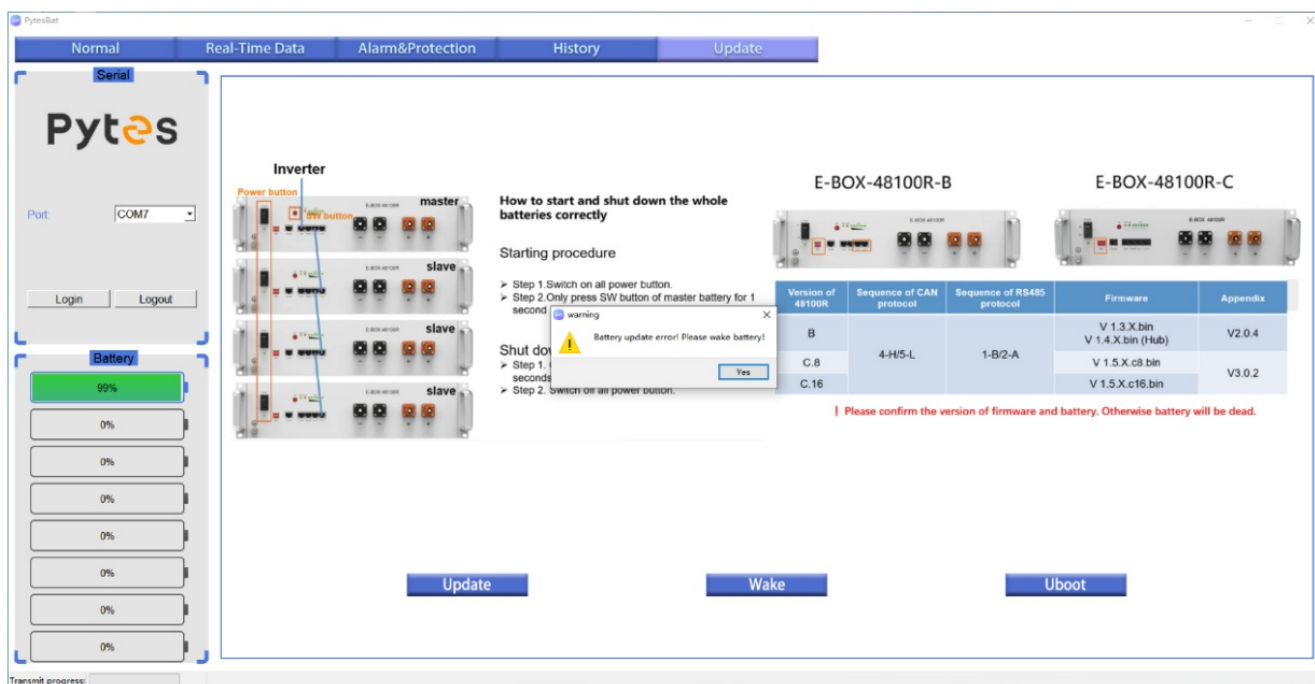


Figure 11

- The background in this page present 1) how to start and shut down the batteries correctly; 2) identify type of battery you have; 3) the right firmware format for your reference.
- If you want to update the other battery, you have to plug the RS232 cable to the other battery.

12. Notes

- While the battery is connected to the PC via the communication cable, plugging out the USB terminal from the PC would disconnect the serial port.
- Before closing the program, the user needs to click the button Logout to disconnect battery and the PC.
- If the program crashes and upon restart, the program prompts the user the program has crashed, as shown in Figure 12. Please send the crash info to our after-sale team and help us to improve our program. You can find the log in location shown as Figure 12.

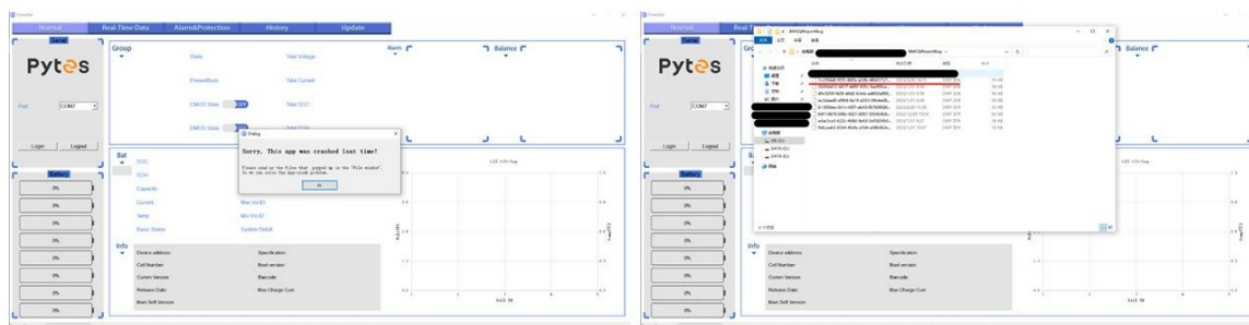



Figure 12

13. Changelog Notes

Version	Changelog	Author/Editor	Date
V2.6	Initial creation	Paul	3/30/2023

<div><div>Pytes</div><div>BMSQt User Manual</div><div></div><div><small>Ver 1.0 May 2017, 2020</small></div></div>	<div>Pytes BMSQt Energy Storage System [pdf] User Manual</div> <div>BMSQt, BMSQt Energy Storage System, Energy Storage System</div>
---	---