



Pytes USA R-BOX-NEMA3 Battery Storage System Installation Guide

[Home](#) » [Pytes USA](#) » Pytes USA R-BOX-NEMA3 Battery Storage System Installation Guide 

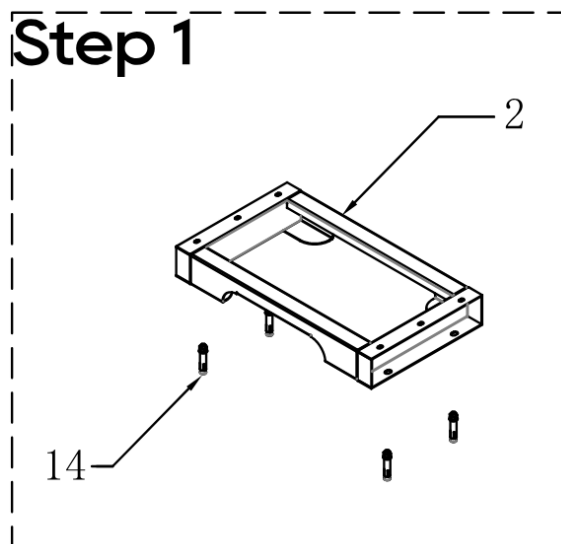


R-BOX-NEMA3 Installation Instructions – Floor Mounting –

Contents

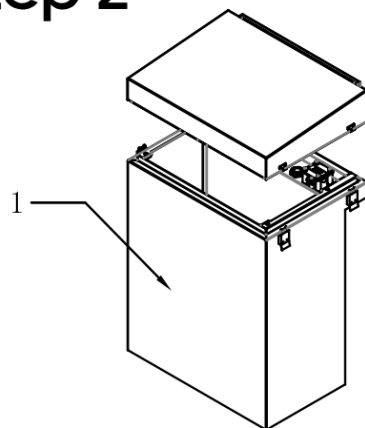
- [1 R-BOX-NEMA3 Battery Storage System](#)
- [2 Packing List](#)
- [3 Documents / Resources](#)
- [3.1 References](#)

R-BOX-NEMA3 Battery Storage System



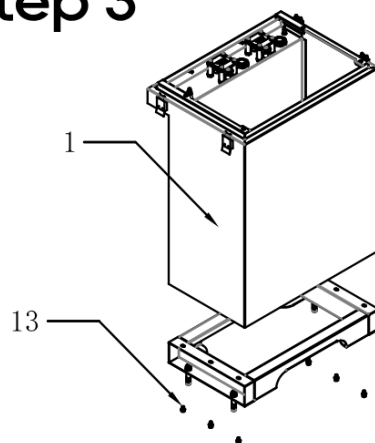
Fix the Floor Mounting Base with expansion screws

Step 2



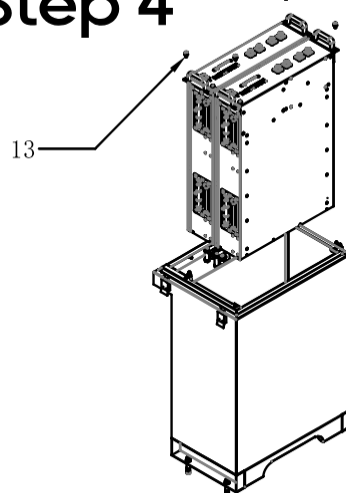
Untwist latches to remove the top cover of main cabinet

Step 3



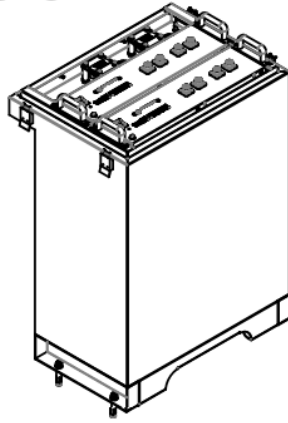
Fix the main cabinet to Floor Mounting Base with M6 screws.

Step 4



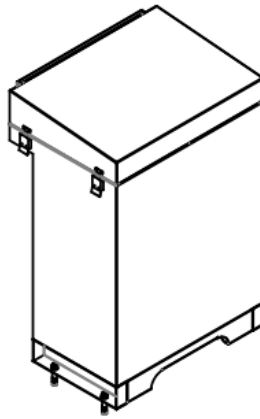
Place the batteries into cabinet as shown in picture and fix them to cabinet with M6 Screws.

Step 5



Cabling.

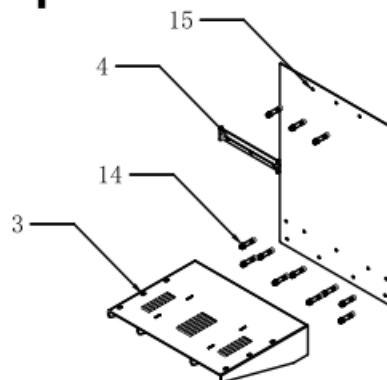
Step 6



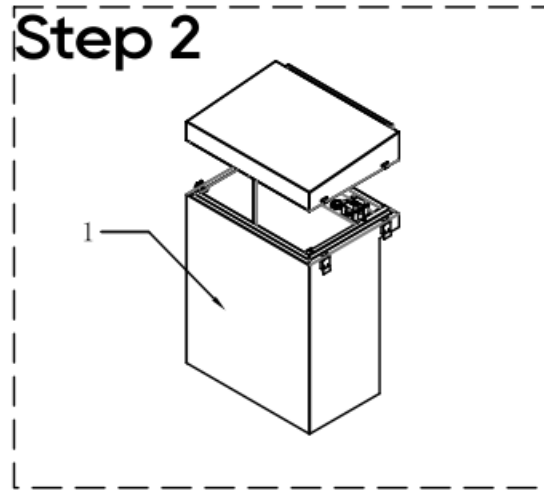
Place and lock the top cover to main cabinet by twisting the latches.

R-BOX-NEMA3 Installation Instructions – Wall Mounting –

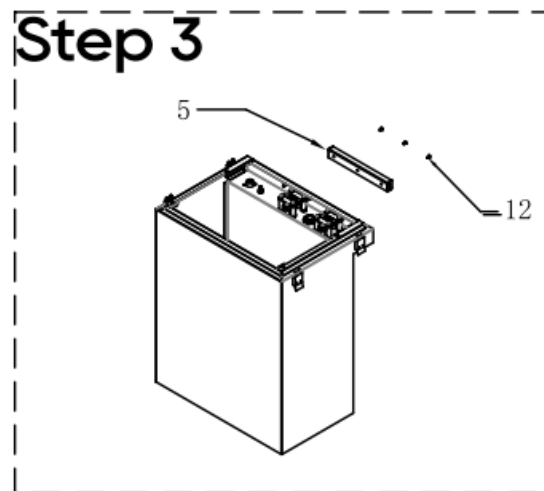
Step 1



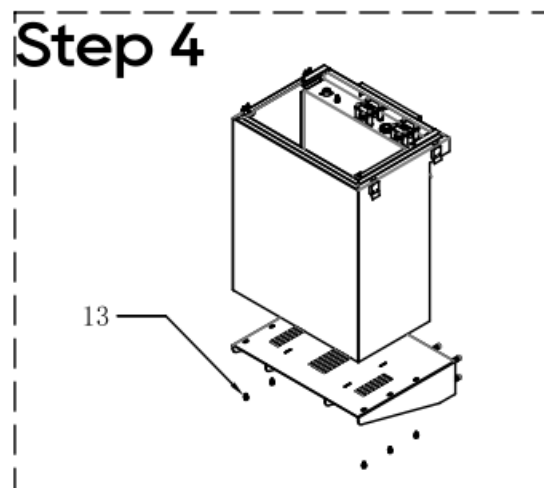
Fix the Wall Mounting Base and Wall Mounting Plate to wall with expansion screws by Positioning Board.



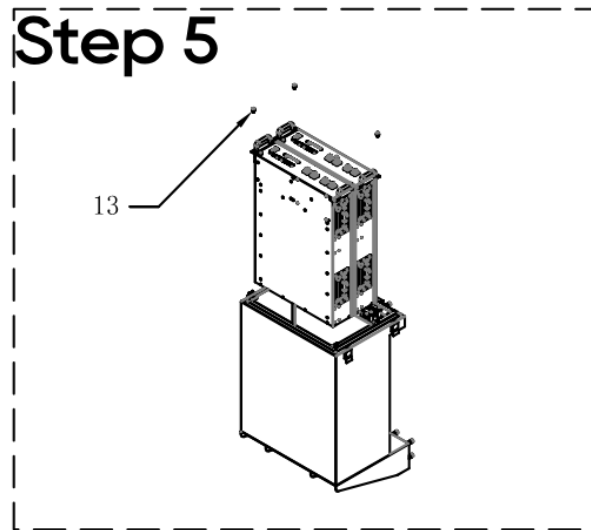
Untwist latches to remove the top cover of main cabinet.



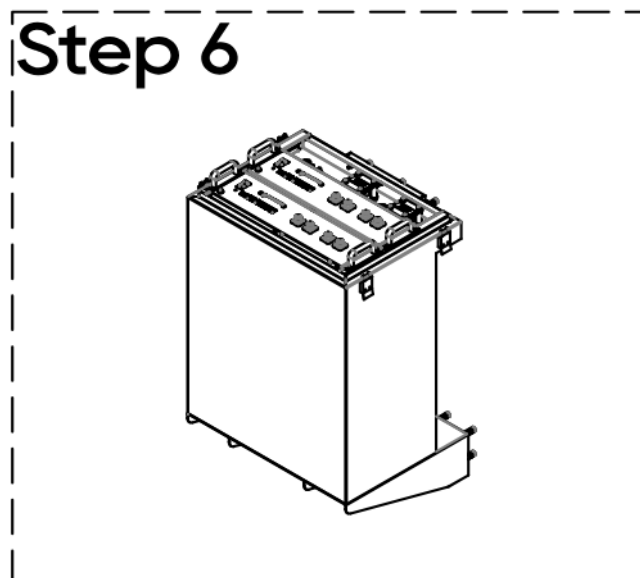
Fix the Wall Mounting Adapter to Cabinet with M4Screws



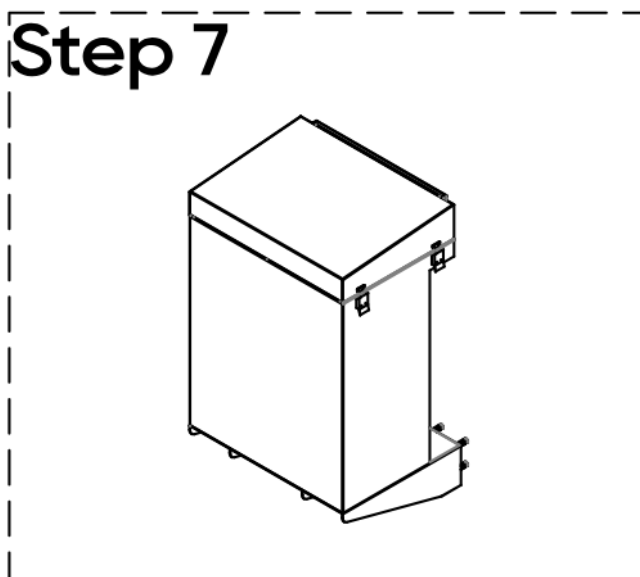
Install the main cabinet to wall by aligning Wall Mounting Adapter to Wall Mounting Plate. Then to fix the main cabinet to Wall Mounting Base with M6 Screws.



Place the batteries into cabinet as shown in picture and fix them to cabinet with M6 Screws.









Cabling.



Place and lock the top cover to main cabinet by twisting the latches.

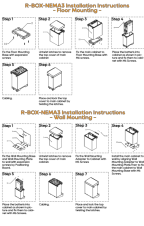
Packing List

NO.	Items	Quantit	Specifications	Pictures
1	Main Cabinet	1 pcs	20.9"x15.8"x28.9" 530×400.3×734.7mm	
2	Floor Mounting Base	1 pcs	20.9"x11.9"x2.8" 530×301.2x70mm	
3	Wall Mounting Base	1 pcs	20.9"x16.1"x4.7" 530x409Xx120mm	
4	Wall Mounting Plate	1 pcs	10.6"x0.6"x2.1" 270x15x53mm	
5	Wall Mounting Adapter	1 pcs	9.8"x0.8"x1.2" 250x20x30mm	
6	Battery to Busbar Power Cable (Positive)	1 pcs	UL10269-4AWG-220mm- Orange-Amphenol 5.7mm Positive+ SC25-6	
7	Battery to Busbar Power Cable (Positive)	1 pcs	UL10269-4AWG-310mm- Orange-Amphenol 5.7mm Positive+ SC25-6	
8	Battery to Busbar Power Cable (Negative)	1 pcs	UL10269-4AWG-260mm-Black -Amphenol 5.7mm Negative+ SC25-6	
9	Battery to Busbar Power Cable (Negative)	1 pcs	UL10269-4AWG-330mm-Black -Amphenol 5.7mm Negative+ SC25-6	
10	Battery to Cabinet Earthing Cable	1 pcs	UL1015-10AWG-250mm Yellow/Green-SC6-6+SC6-6	
11	Battery to Battery Earthing Cable	1 pcs	UL1015-10AWG-120mm Yellow/Green-SC6-6+SC6-6	
12	M4 Screw	3 pcs	GB/T 70.3-2000 M4x0.3" (8mm)	
13	M6 Screw	10 pcs	ISO 10644G-2014 M6x0.5"(12mm)	
14	Expansion Screw	12 pcs	GB/T 22795(TCQ)-2008 M8x2.0"(50mm)	
15	Positioning Board	1 pcs	20.9"x28.7"x0.06" 530x730x1.5mm	
16	Warning label	1 pcs	2.0"x3.9" 50mmx100mm	

Tools To Prepare



Documents / Resources

	<p>Pytes USA R-BOX-NEMA3 Battery Storage System [pdf] Installation Guide R-BOX-NEMA3 Battery Storage System, R-BOX-NEMA3, Battery Storage System, Storage System, System</p>
---	--

References

- [User Manual](#)

Manuals+, Privacy Policy

This website is an independent publication and is neither affiliated with nor endorsed by any of the trademark owners. The "Bluetooth®" word mark and logos are registered trademarks owned by Bluetooth SIG, Inc. The "Wi-Fi®" word mark and logos are registered trademarks owned by the Wi-Fi Alliance. Any use of these marks on this website does not imply any affiliation with or endorsement.