

Pyronix Android Tablet Security Solution with Enforcer V11 and Smartplug User Guide

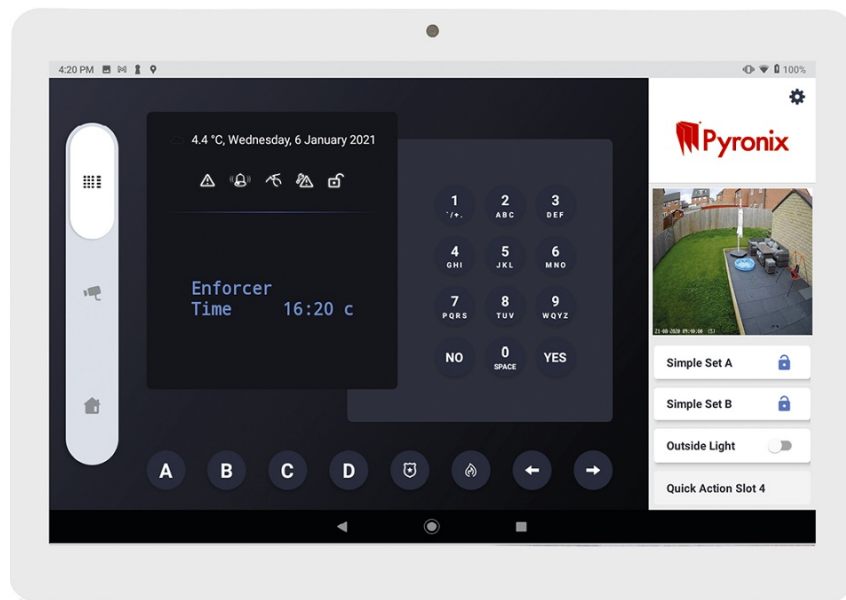
[Home](#) » [Pyronix](#) » Pyronix Android Tablet Security Solution with Enforcer V11 and Smartplug User Guide 

Contents

- 1 Pyronix Android Tablet Security Solution with Enforcer V11 and Smartplug
- 2 ASSEMBLING
 - 2.1 UNPACK
 - 2.2 INSTALL THE SIM CARD
 - 2.3 INSTALL THE MEMORY CARD
 - 2.4 CHARGE THE BATTERY
- 3 GETTING STARTED
 - 3.1 DEVICE LAYOUT
 - 3.2 TURN YOUR DEVICE ON AND OFF
 - 3.3 AIRPLANE MODE
 - 3.4 USE THE TOUCH PANEL
 - 3.5 HOME SCREEN
 - 3.6 TASK BAR
 - 3.7 NOTIFICATION PANEL
 - 3.8 LOCK AND UNLOCK THE SCREEN
 - 3.9 SECURITY
 - 3.10 AUTO ROTATION
 - 3.11 ENTER TEXT
 - 3.12 MANAGE APPLICATIONS
 - 3.13 RESET TABLET
- 4 COMMUNICATION
 - 4.1 MESSAGING
 - 4.2 EMAIL
- 5 WEB
 - 5.1 PLAY STORE
- 6 CONNECTIVITY
 - 6.1 USB CONNECTION
 - 6.2 WI-FI
- 7 SAFETY PRECAUTIONS
- 8 CARE AND MAINTENANCE
- 9 PRODUCT INFORMATION
- 10 Documents / Resources
- 11 Related Posts



Pyronix Android Tablet Security Solution with Enforcer V11 and Smartplug



ASSEMBLING

UNPACK

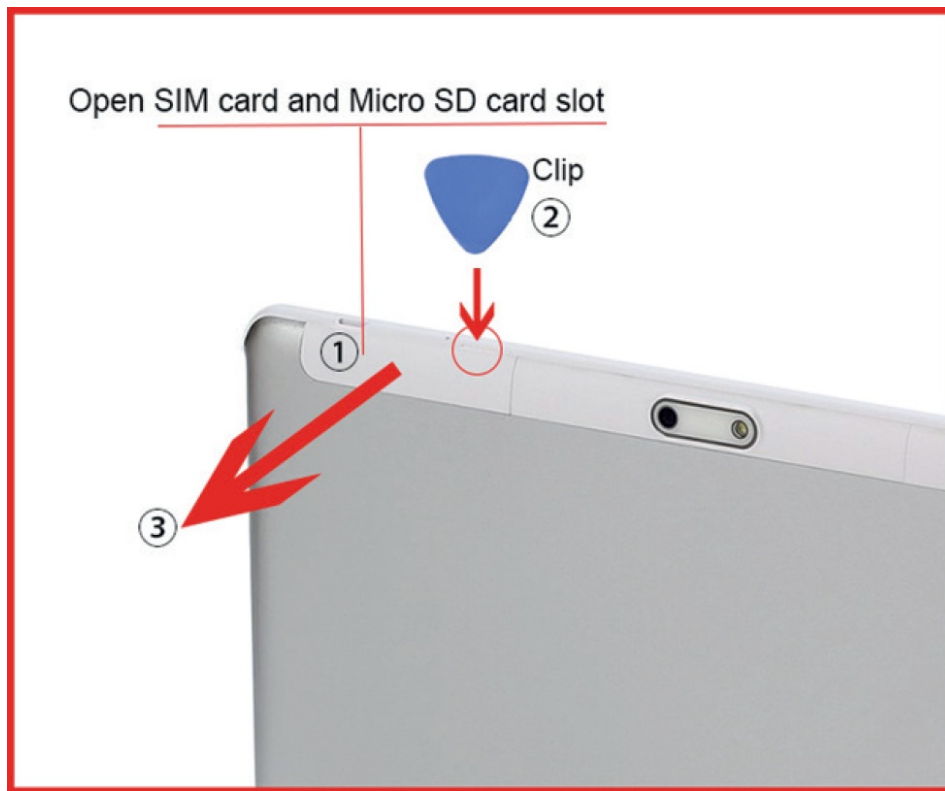
Your product box will contain the following items:

- Tablet
- User manual
- Adapter
- Charging cable

Additional accessories can be purchased.

INSTALL THE SIM CARD

You need to insert a SIM card to use the phone function. To install the SIM card, follow the instructions below.



1. Open SIM card and micro SD card slot:

Find '1' in the above picture, this part is the SIM card and micro SD card slot cover.

Insert 'clip 2' in to the groove (the position indicated by the circle and arrow) of the card slot cover. Take out the card slot cover in the direction of the 'arrow 3'.

2. Make sure that the card's gold contacts face into the device.

3. Push the SIM card into the slot until it clicks.

INSTALL THE MEMORY CARD

To store additional multimedia files, you can insert a memory card.

- Insert a memory card with the gold contacts facing downwards.
- Push the memory card into the slot until it clicks.

Please note: This device uses approved industry standards for memory cards, but some brands may not be fully compatible with your device.

CHARGE THE BATTERY

Before using the device for the first time, you must charge the battery.

- Charge the device using the USB cable provided with the adapter or connecting to a PC/laptop. Charging will be faster when connected to a plug socket via the adapter.
- Battery full icon is shown when finished if your device is off.

Warning: Use only original batteries and chargers. Unapproved chargers or cables can cause batteries to explode and/or damage your device.

GETTING STARTED

DEVICE LAYOUT

| Function | Remark |
|-------------|---|
| Power | Press and hold for 2 seconds to turn on or turn off the device. |
| Lock | Press to lock the device. |
| Reset | Press and hold for 10 seconds to reset the device. |
| Volume keys | Adjust the device volume. |
| SIM Card | Location for SIM Card |
| TF Card | Location for Micro SD Card |

TURN YOUR DEVICE ON AND OFF

To turn on your device, press and hold the power key.

To turn off your device, press and hold the power key, and then tap OK.

AIRPLANE MODE

To use only your device's non-network services, switch to 'flight mode'. To enable flight mode, navigate to '**Settings » WIRELESS & NETWORKS » More » Airplane mode**' and select from application list.

USE THE TOUCH PANEL

You can operate the icon, button, keyboard by the touch panel including:

- **Touch**

To access an application, touch it with your finger.

For example: Touch an application icon, you can open the application.

- **Touch and hold**

To enter the available options for an item, touch and hold the item.

- **Swipe**

Swipe the screen to scroll up and down the applications, images, and web pages at your convenience. The screen can also be swiped horizontally.

- **Drag**

Place your finger on the screen to drag an object to another location.

- **Pinch/Spread**

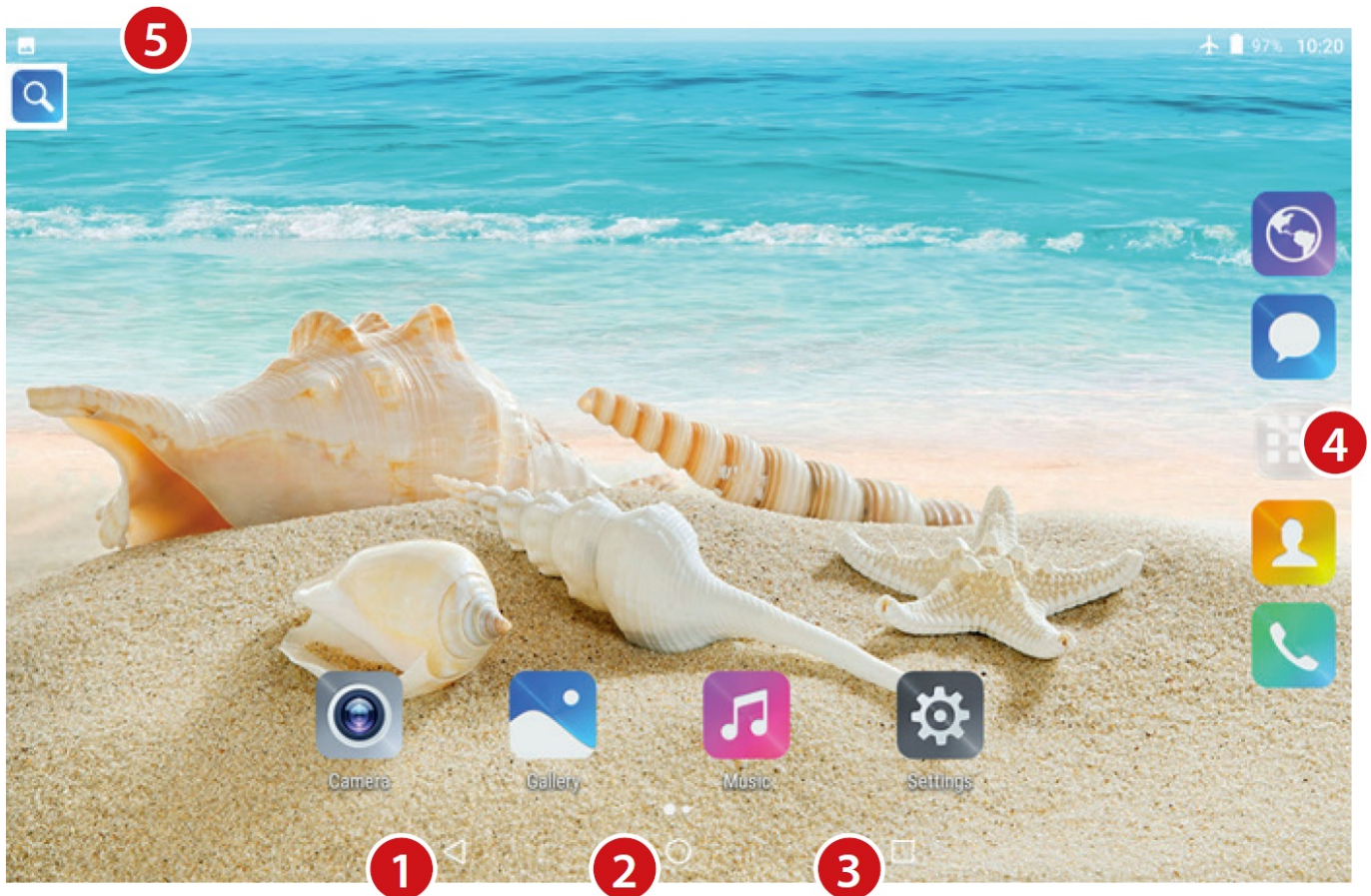
Place two fingers of one hand on the screen surface and draw them apart or together to scale an element on the screen.

HOME SCREEN

You can bring all the items (applications, shortcuts, folders and widgets) you use most frequently to your Home screen for quick access. Press the 'Home key' to switch to home screen.

Home screen is provided in an extended format to allow more space for adding applications, shortcuts etc. Swipe the home screen horizontally left and right to get a complete view of the home screen. The short white line at the lower part of the screen indicates which screen you are viewing.

TASK BAR

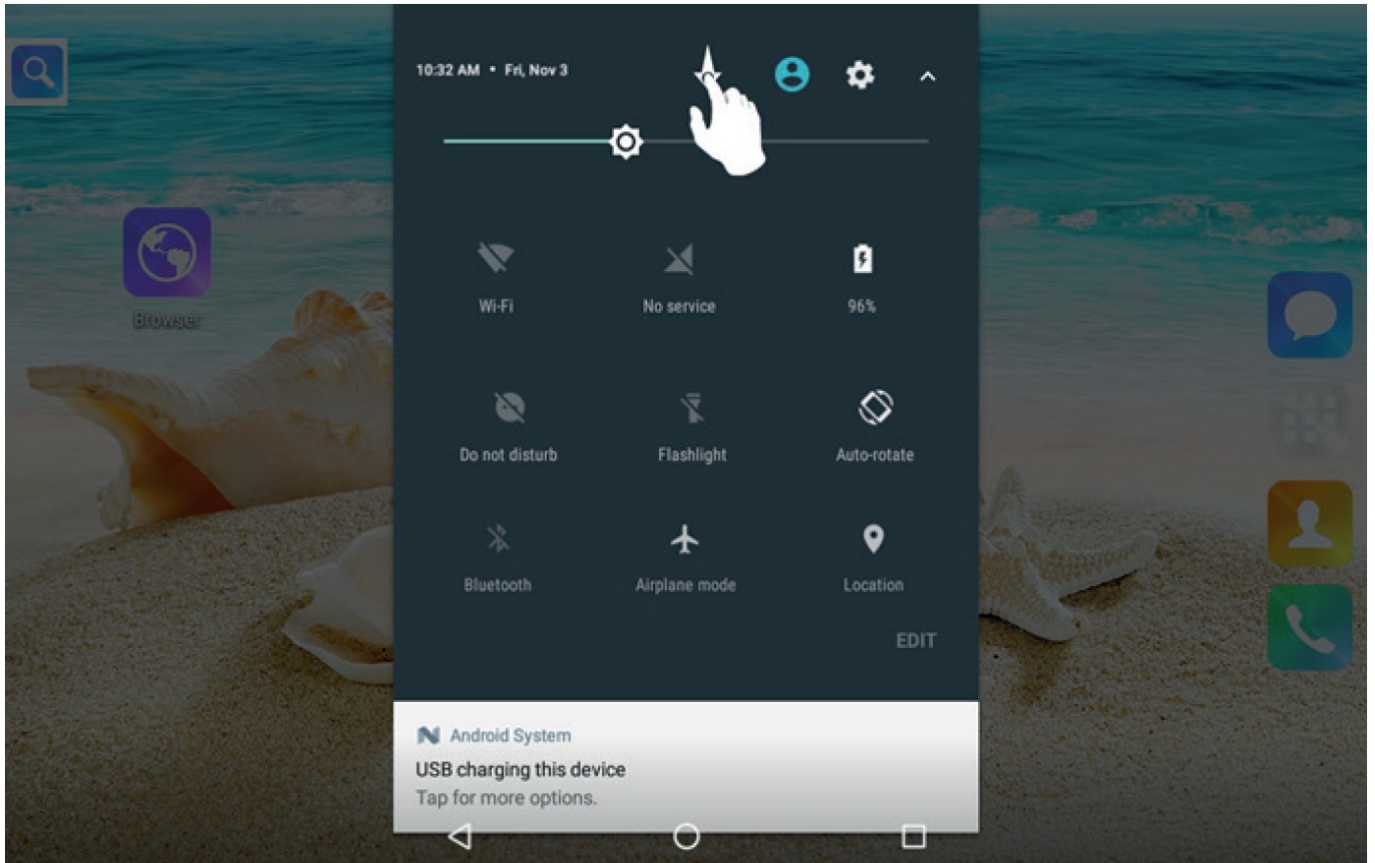


The two task bars are shown at the top and bottom of the screen. They display commonly used option buttons, battery level indicator, current time and other indicator icons.

1. Return to previous screen.
2. Return to home screen.
3. View the applications you have accessed recently.
4. Open application menu.
5. Display notification icons. Tap the notifications area to open the notification panel.

NOTIFICATION PANEL

Tap the notifications area to open the notification panel as shown below. You can access a list of notifications. Tap an icon to activate or deactivate wireless connection features and other settings.



| Definition |
|--------------------------------|
| Open Wi-Fi available |
| Wi-Fi connected |
| Signal strength |
| Roaming mode |
| Uploading data |
| Downloading data |
| Location |
| Alarm activated |
| Bluetooth connected |
| Flight mode activated |
| New email |
| New text or multimedia message |
| Call in progress |
| Missed call |
| Call on hold |
| Call diverting activated |
| Battery power level |
| Music being played |

LOCK AND UNLOCK THE SCREEN

To lock the screen manually, press the 'Power key'.

To unlock the screen, tap and hold the lock icon, then drag it to the unlock area where the unlock icon is.

SECURITY

You can protect your device and data by programming a screen lock or encrypting your tablet.

Set a Screen Lock

To set a screen lock, tap 'Settings » Security » Screen lock' from application list.

- **None**

Deactivate the screen lock.

- **Slide**

Swipe to unlock the screen.

- **PIN**

Enter a numeric PIN to unlock. When prompted, enter the PIN to unlock the screen.

- **Pattern**

Draw a pattern to unlock. Follow the instructions to draw your lock pattern. When prompted, draw the pattern to unlock the screen.

- **Password**

Enter a password to unlock. When prompted, enter the password to unlock the screen.

Screen Time-Out

Select '**Settings » Display » Sleep**' from application list. You can program the period of time before the screen times out and goes into lock mode; the tablet must be idle for the full amount of time to lock.

AUTO ROTATION

If you rotate the device while using some features, the interface will automatically rotate as well. To prevent the interface from rotating, open the notifications panel and select the 'Auto-rotate' screen , then scroll it to 'Off'.

ENTER TEXT

- You can enter text by selecting characters on the virtual keyboard.
- Tap the text input field to display the virtual keyboard. To hide the keyboard, tap at the task bar.
- To change the text input method, tap at the task bar.
- From a text field, you can use the copy and paste feature for fast inputting.

MANAGE APPLICATIONS

To manage the applications installed on your device, tap '**Settings » App**'.

1. To uninstall an application, select 'DOWNLOADED', then select an item and tap 'Uninstall', tap 'OK' to confirm.
2. To stop or change the settings of an application, select 'RUNNING' or 'ALL', then select an item and tap the option you need.

RESET TABLET

You can reset all system and desktop settings to their original values by the following steps:

1. Select 'Settings » Backup & reset' from application list.
2. Tap 'Factory data reset'.
3. If you want to erase all data on your tablet, such as music, pictures, and other data, tap the Erase SD card check-box to create a check-mark.
4. Tap 'Reset tablet'.

The device resets to the factory default settings automatically.

Warning: Factory data reset will erase all data from your device and SD card, including your Google account, system/application data and settings, and downloaded applications.

COMMUNICATION

MESSAGING

Create and send a text or multimedia message, and view or manage messages that you have been sent or received.

View Messages

1. Tap 'Messaging' from application list.
2. Tap the message to view the detailed information.

Create and Send SMS

1. Tap 'NEW MESSAGE'.
2. In 'To' field, enter the recipient's mobile phone numbers manually. If you enter more than one number, separate the numbers with a comma.
3. In 'Type message', enter the text of the message.
4. Tap to send the message.

Create and Send MMS

Multimedia message can include pictures, sound and text.

1. Tap 'NEW MESSAGE'.
2. Tap at the title bar.
3. Select one of the items below.
 - **Pictures:** Insert image.
 - **Capture picture:** Capture new picture and insert the picture.
 - **Videos:** Insert video clip.
 - **Capture video:** Capture new video clip and insert the video clip.
 - **Audio:** Insert sound clip.
 - **Record audio:** Record sound clip and insert the sound clip.
 - **Slideshow:** Add more than one slide.
4. In 'To' field, enter the recipient's mobile phone numbers or email addresses manually. If you enter more than one number or email, separate them with a comma.
5. In 'Type message' field, enter the text of the message.
6. Tap to send the message.

EMAIL

To receive and send mail, you must have a remote mailbox service. This service may be offered by a service provider. Your device is compliant with applicable internet standards for POP3/IMAP/Exchange. Before you can send or receive mail on your device, you need to set up an email account and define the email settings correctly. You can define more than 1 mailbox.

Set up Your Email

1. Tap 'Email' from application list.
2. You can use mailbox guide to set up your mailbox, tap 'Next' until it's done.
3. If you need to add another email account, tap the option button at the upper right "**Settings » ADD ACCOUNT**", then set up the email account with the mailbox guide.

When you are finished setting up the email account, the email messages are downloaded to your device. If you have created more than two accounts, you can switch between email accounts. Select an account name at the top left of the screen and select the one you want to retrieve messages from.

Delete Your Email Account

1. Open the application list and select 'Email'.
2. Tap the option button in the upper right, then select 'Settings' and the email account you want to delete.
3. Tap 'Remove account'.
4. Tap 'OK' to confirm.

Create and Send Email

1. Open email application.
2. Tap 'New Mail' icon.
3. In 'To' field, enter the recipient's email addresses manually and separate them with a comma. Add more recipients by tapping Cc/Bcc.
4. To insert attachments, tap the option button at the upper right and select 'Attach file'.
5. Enter the subject and the text.
6. Tap 'SEND' to send the email.

WEB

PLAY STORE

Play Store allows you to easily download applications directly to your device. Before using the Play Store, you must have a Google Account.

1. From the application list, tap Play Store.
2. Sign in to your Google Account.
3. Search for and download applications as desired.
4. Follow the on-screen instructions.

Please note: All applications offered by Play Store are developed by third party. To get the information about the developers, you can read the descriptions of each application. Our company is not liable for performance issues caused by third-party applications.

Record a Video

1. Open the application list and select Camera. Tap to change to video mode.
2. Tap to start recording. The length of the video recording is restricted by the available space on your storage.

3. Tap to stop recording. The video is saved automatically to the folder DCIM.
4. After recording videos, select the image viewer icon at the upper right to view the recorded videos.

CONNECTIVITY

USB CONNECTION

You can connect your device to a PC and use it as a removable disk, which allows you access the file directory.

1. If you want to transfer files from or to a memory card, insert a memory card into the device.
2. With a USB cable, connect your device to a PC.
3. Open the notification panel, select USB connected.
4. Tap Turn on USB storage.
5. Open the folder to view files.
6. Copy files from the PC to the memory card.

WI-FI

With Wi-Fi, you can connect to the internet or other network devices anywhere an access point or wireless hotspot is available.

Activate Wi-Fi

1. From application list, tap Settings.
2. In the field of WIRELESS & NETWORKS, turn on the Wi-Fi feature.

Find and Connect to Wi-Fi

1. Once the Wi-Fi feature is activated, the device automatically search for available Wi-Fi connection.
2. Select a network.
3. Enter a password for the network (if necessary).
4. Select Connect.

SAFETY PRECAUTIONS

Read these simple guidelines before using your device. Not following them may be dangerous or illegal.

- **Aircraft**

Switch off in aircraft and follow any restrictions. Wireless devices can cause interference in aircraft.

- **Vehicles**

Never use your device while driving. Place it in a safe place.

Position your device within easy reach. Be able to access your device without removing your eyes from the road.

- **Electronic devices**

In some circumstances your device may cause interference with other devices.

- **Potentially Explosive Environments**

Switch off your device when in any area with a potentially explosive atmosphere, and obey all signs and instructions. Sparks in such areas could cause an explosion or fire resulting in bodily injury or even death.

- **Pacemakers and Other Medical Devices**

Pacemaker manufacturers recommend that a minimum separation of 8 inches be maintained between a wireless device and a pacemaker to avoid potential interference with the pacemaker.

Operation of any radio transmitting equipment, including wireless phones may interference with the functionality of inadequately protected medical devices. Consult a physician or the manufacturer of the medical device to determine if they are adequately shielded from external RF energy or if you have any questions.

Switch off your device in health care facilities when any regulations posted in these areas instruct you to do so.

- **Operating Environment**

When connecting to other device, read its user guide for detailed safety instructions. Do not connect incompatible products.

Do not place your device in the air bag deployment area.

Use the device only in its normal operating positions as explained in the product documentation.

Always switch off your device when its use is prohibited or when it may cause interference and danger.

- **Areas with Posted Regulations**

Switch off your device when any regulations posted in these areas instruct you to do so.

CARE AND MAINTENANCE

- Use only manufacturer-approved accessories. Use general accessories may shorten the life of your device or cause device to malfunction.
- Keep your device dry. Humidity and all types of liquids may damage device parts or electronic circuits.
- Do not use or store the device in dusty, dirty areas.
- Do not store the device in hot or cold areas.
- Do not store your device near magnetic fields.
- Do not store your device with such metal objects as coins, keys and necklace.
- Do not drop your device or cause impacts to your device.

PRODUCT INFORMATION

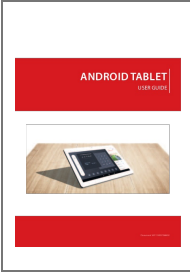
For electrical products sold within the European Community. At the end of the electrical products life, it should not be disposed of with household waste. Please recycle where facilities exist. Check with your Local Authority or retailer for recycling advice in your country.

When disposing of the product, the battery must be disposed of in accordance with the local regulations.

Hereby Pyronix declares that this product is in compliance with the essential requirements and other relevant provisions of Directive 2014/53/EU. The declaration of conformity may be consulted at

www.pyronix.com/product-compliance.php

Documents / Resources

| | |
|--|---|
|  | <p>Pyronix Android Tablet Security Solution with Enforcer V11 and Smartplug [pdf] User Guide</p> <p>Android Tablet, Security Solution with Enforcer V11 and Smartplug, Android Tablet Security Solution with Enforcer V11 and Smartplug</p> |
|--|---|