

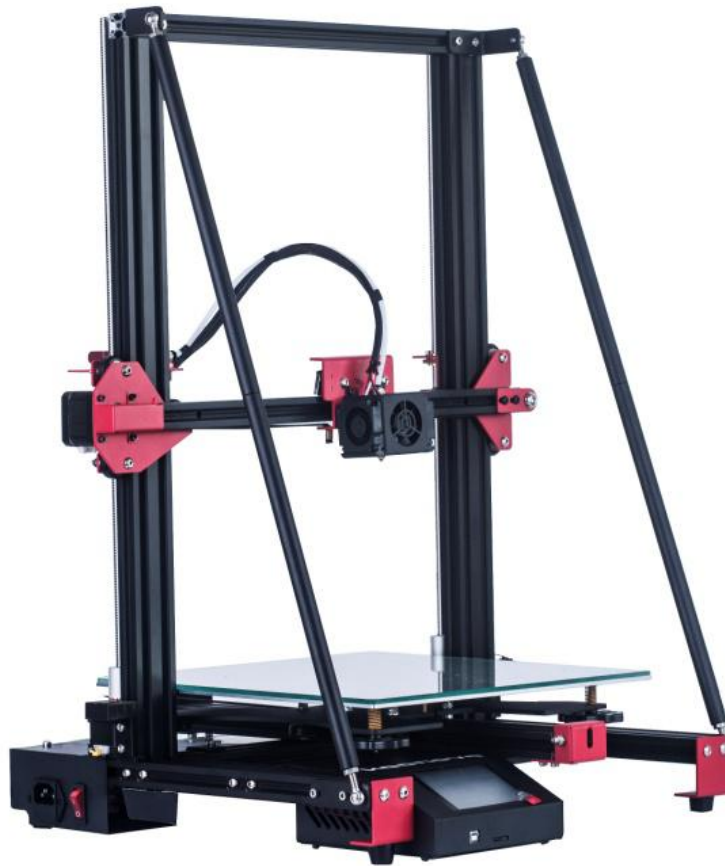


## Pyramind 3D Printer Installation Guide

[Home](#) » [Pyramind](#) » Pyramind 3D Printer Installation Guide 

# Pyramid

## 3D PRINTER



## Quick Installation Guide

### Contents

- [1 Safety Instructions](#)
- [2 Machine parameters](#)
- [3 Structure introduction](#)
- [4 Preparation list](#)
- [5 Part 1 : Install the Z parts](#)
- [6 Part 2: Install the X parts](#)
- [7 Part 3: Fixed gantry](#)
- [8 Part 4: Installing screw rod](#)
- [9 Part 5: Install support rod](#)
- [10 Part 6: Line connection](#)
- [11 Level the heated bed](#)
- [12 The normal distance](#)
- [13 Installation software](#)
- [14 Start printing](#)
- [15 Warm reminder](#)
- [16 Trouble Shooting](#)
- [17 Documents / Resources](#)
- [18 Related Posts](#)

## Safety Instructions



When printer is working, please beware of the high temperature of hotbed, extruder head, and other hot parts, Please don't touch any hot part during printing in case of scald. Please note hot parts need time to cool down after working.



The printer has 220V AC/MOV AC voltage and other high voltage power connector, Please 5 don't touch conductive part in case of electric shock,



The power of some key parts of the printer (such as hotbed, extruder head) is stronger, During installation and usage, please ensure all terminals are connected tightly to avoid any (sparking may be caused by loose wiring. To ensure safety, printer should be manned during working.

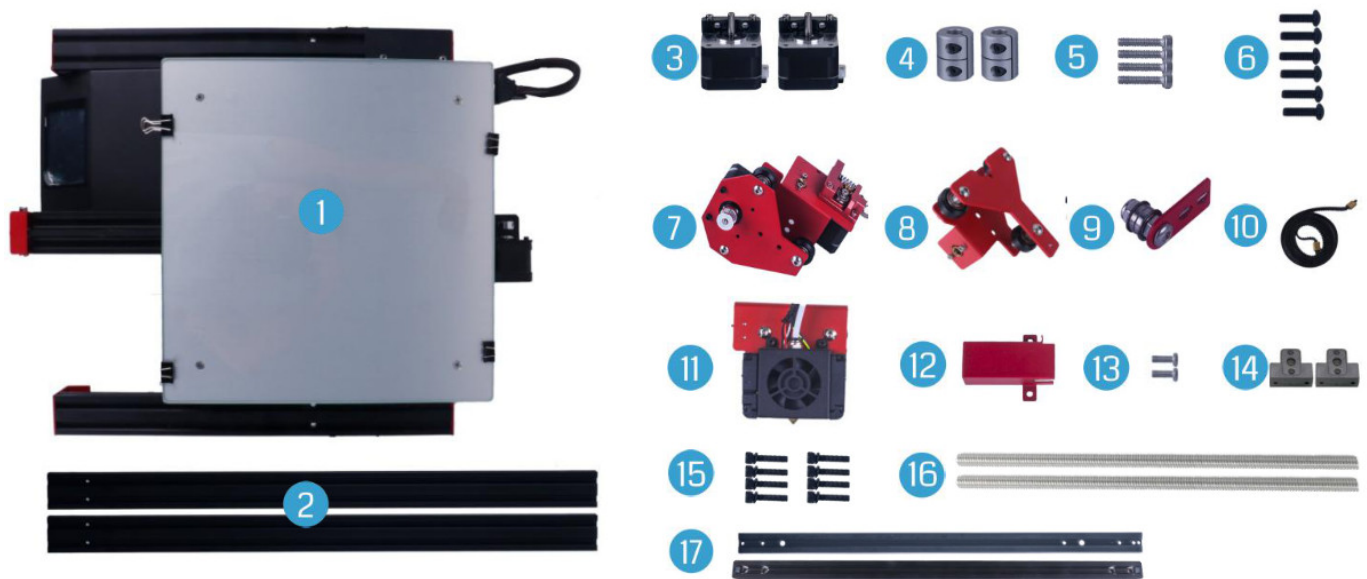
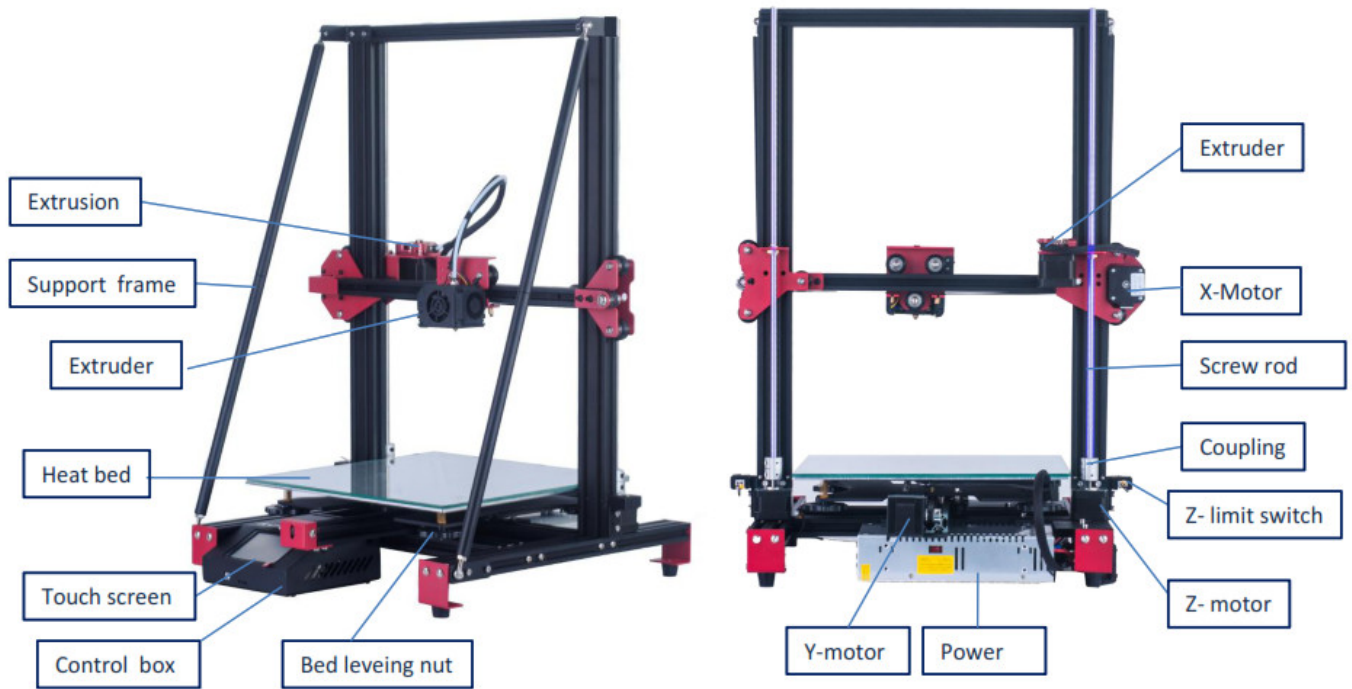


The printer belongs to mechanical equipment. When it is working, please don't touch 'Se moving parts in case of mechanical wounding.

## Machine parameters

Printing Size(mm)	00*300*400	Molding Tech	FDM
Slice Software	CURA /Simplify3D/ Repetier-Host ect	Power Supply	AC :115-240 V DC:24V 15A
Nozzle Number	1	Total Power	360W
Slice Thickness	0.1-0.4mm	Bed Temp	≤ 110°C
Precision	±0.1mm	Nozzle Temp	≤ 260°C
Nozzle Diameter	0.4mm.Support 0.2/0.3/0.6/0.8mm	Printing Speed	≤180mm/s, Normal 30-60mm/s

## Structure introduction



1. Printer base*1	7. X-axis left part*1	13. M3×6 *2
2. 2040 aluminum profile*2	8. X-axis right part*1	14. Screw rod fixing block*2
3. Z-motor *2	9. X belt bearing*1	15. M5×25 *8
4. Coupling *2	10. Belt *1	16. Screw rod *2
5. M4×20 *4	11. Extruder part *1	17. 2020 aluminum profile*2
6. M4×16 *6	12. X end stop*1	

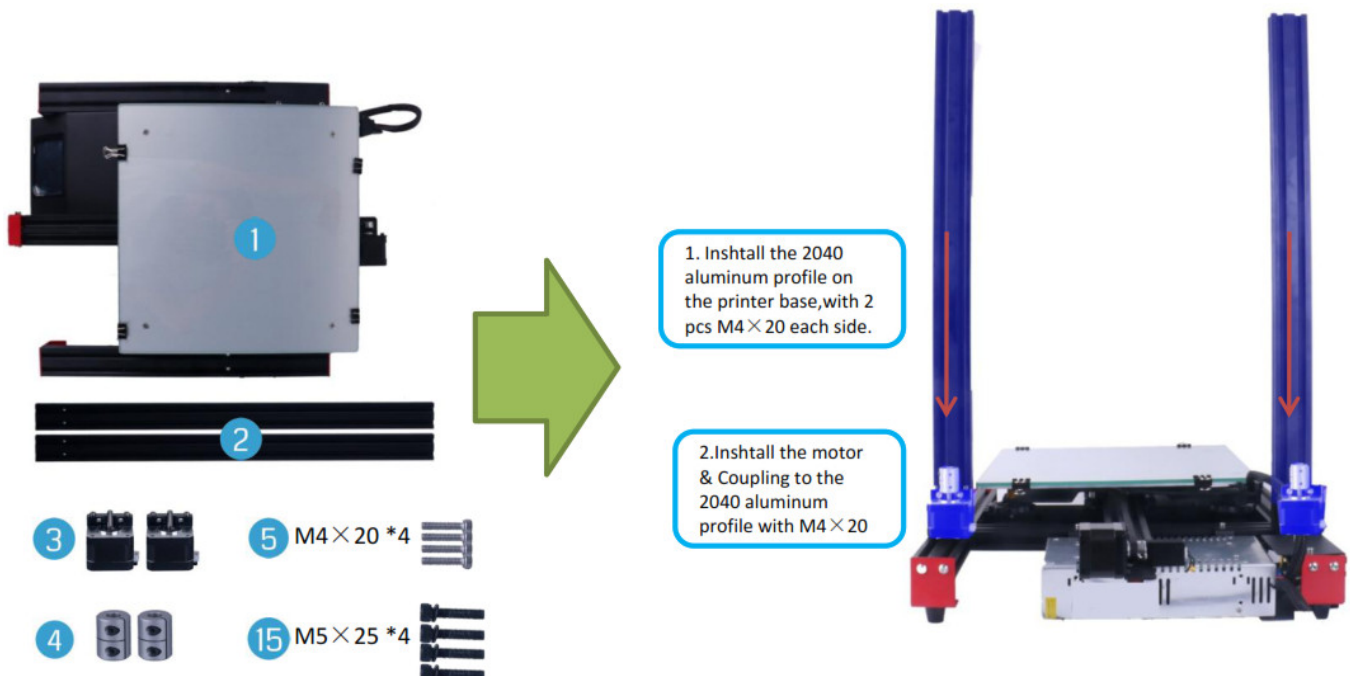
## Preparation list



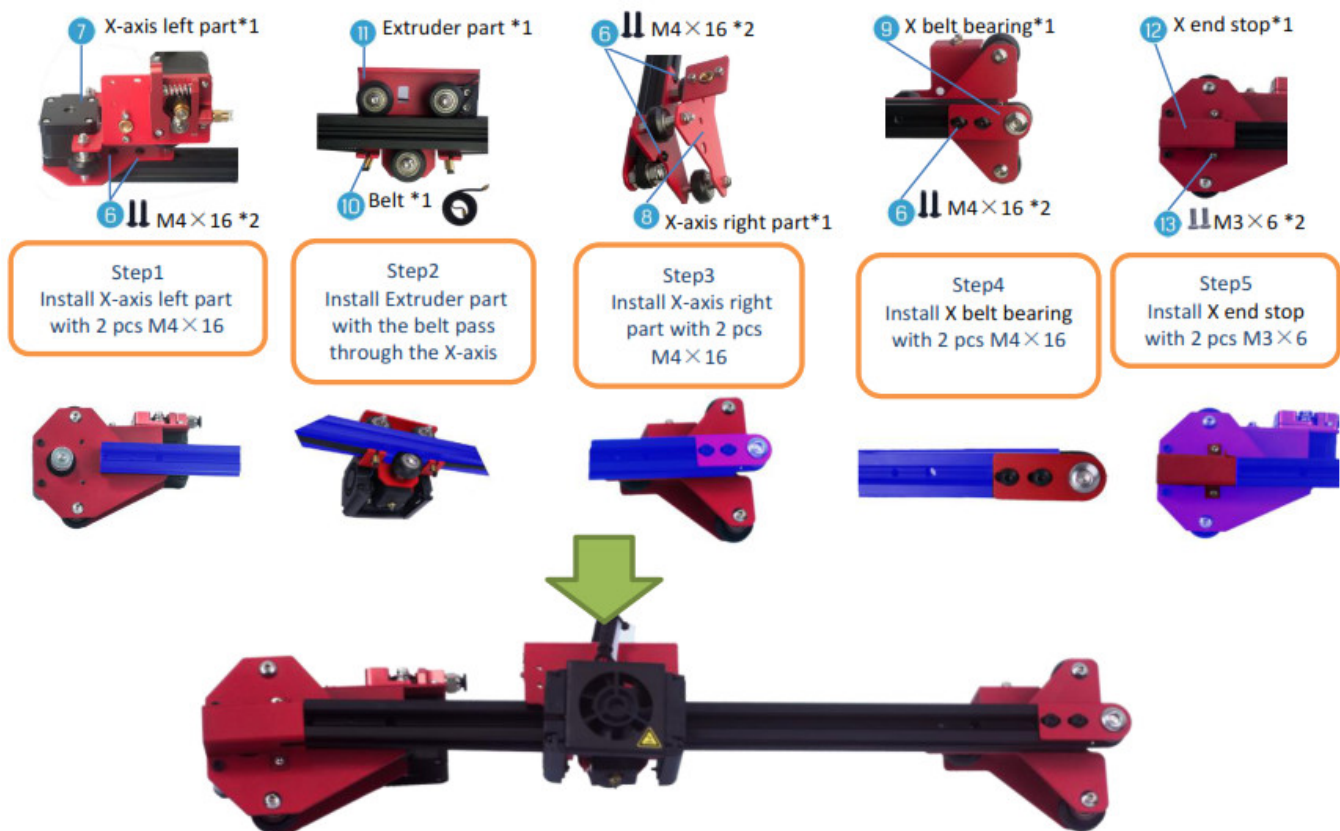
18. Pull rod-285mm*4	21. M5×10 *4	24. Live bolts M6×35 *4
19. M5×8 *8	22. M5 T Nut *10	25. Connetcor A *2
20. M6 Nut *4	23. Screws M6×40 *2	26. Connetcor B *2

## Part 1 : Install the Z parts

### Preparation list

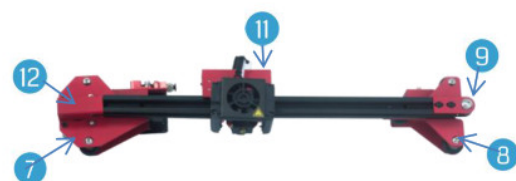
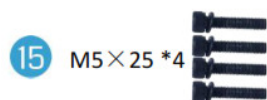


## Part 2: Install the X parts



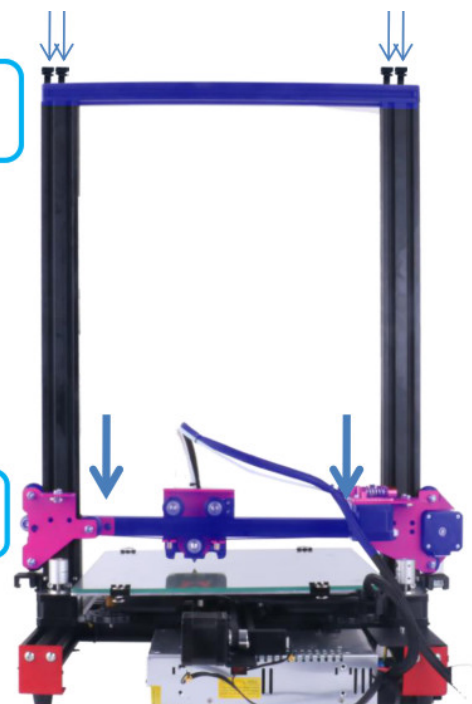
### Part 3: Fixed gantry

#### Preparation list



**Step 2:** Install the  
Gantry top beam with  
2 pcs M5×25 each  
side

**Step 1:** put the X-axis  
part pass through the  
2040 pillar



### Part 4: Installing screw rod



## Preparation list



Step 2: Install the screw rod fixing block

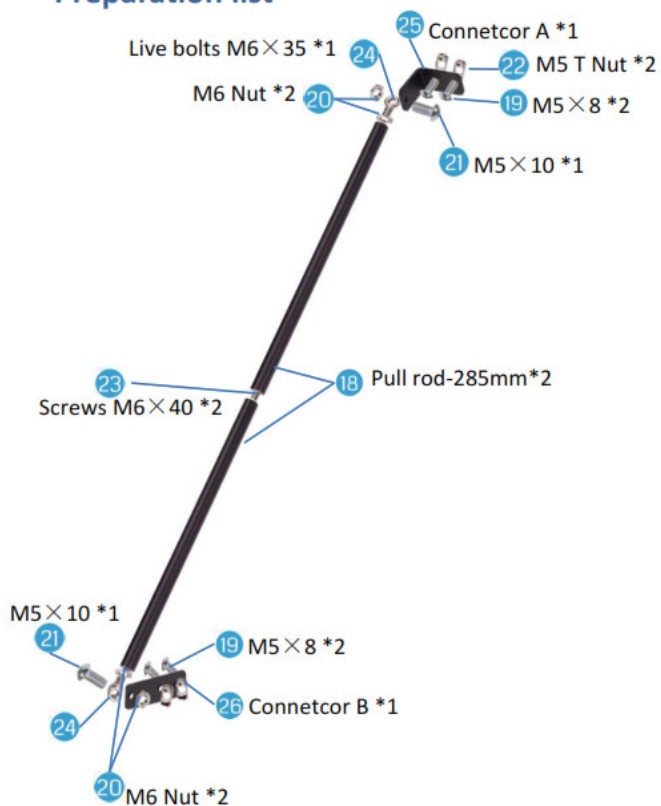


Step 1: Install the Screw rod and tighten the Couplings

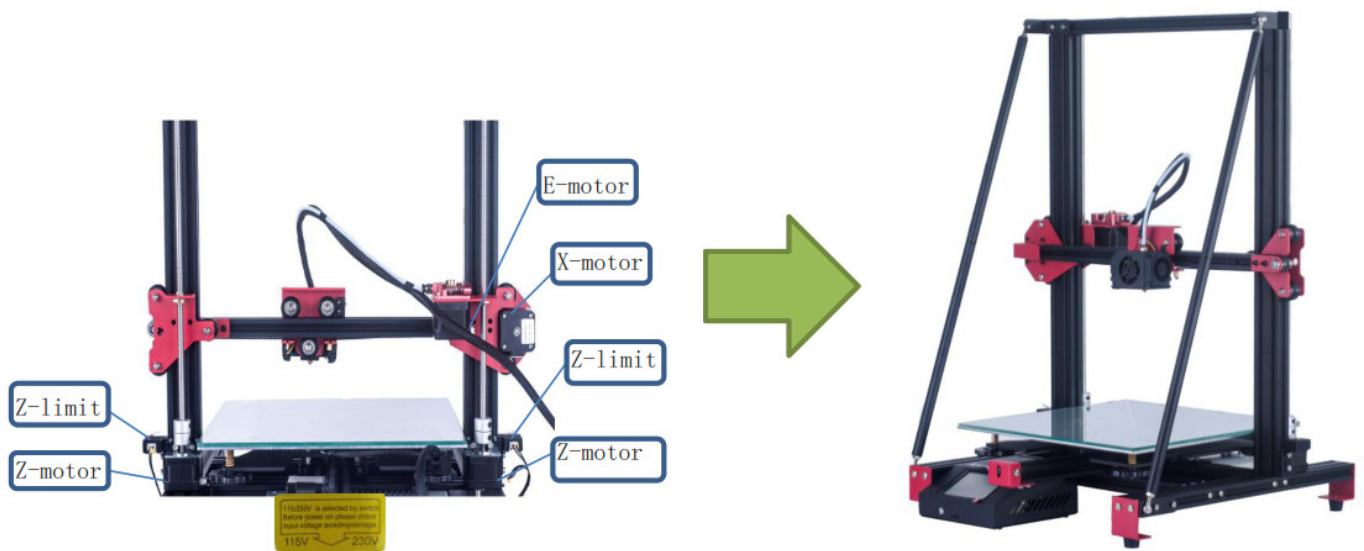


## Part 5: Install support rod

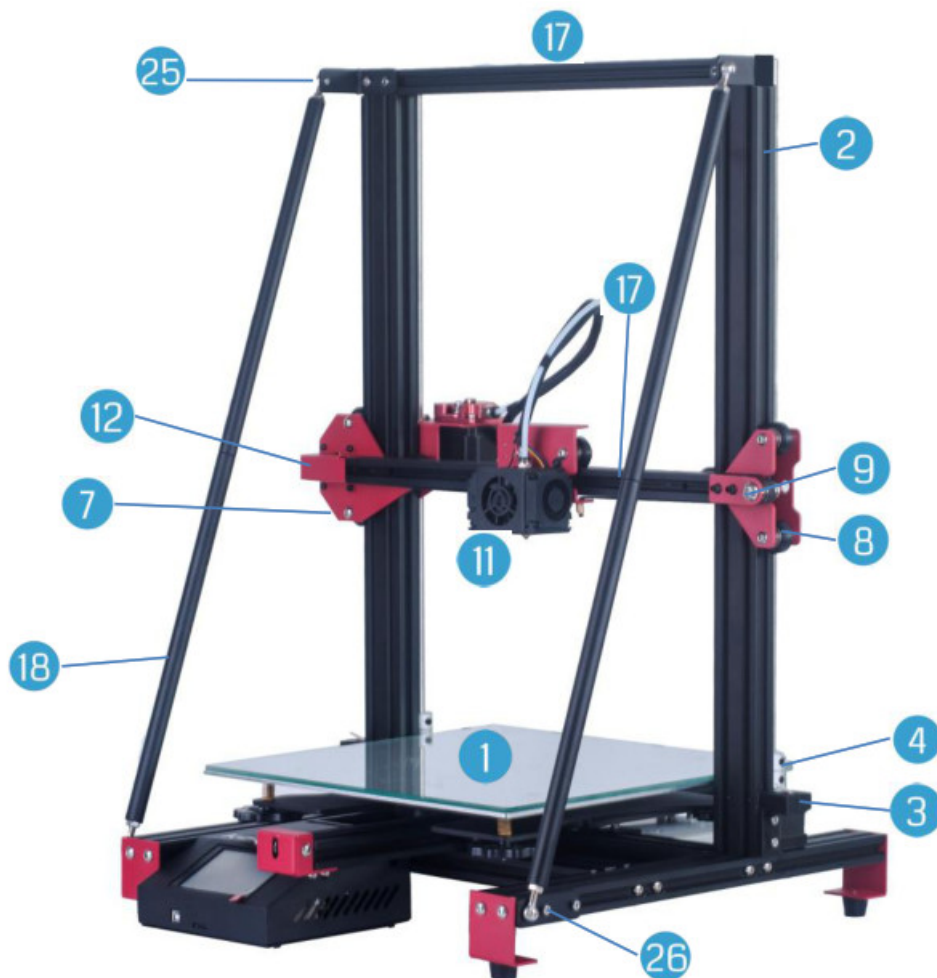
### Preparation list



## Part 6: Line connection



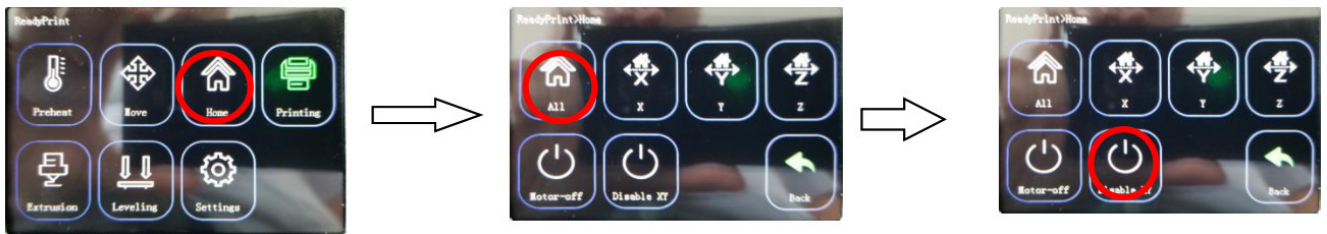
Select voltage before starting up



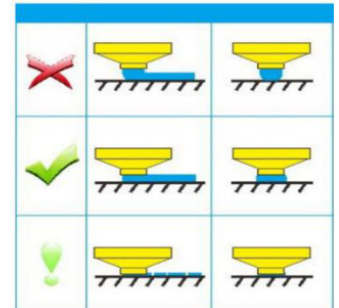
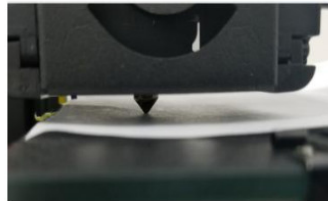
## Level the heated bed

1. Auto Home ➡ All ➡ Disable xy

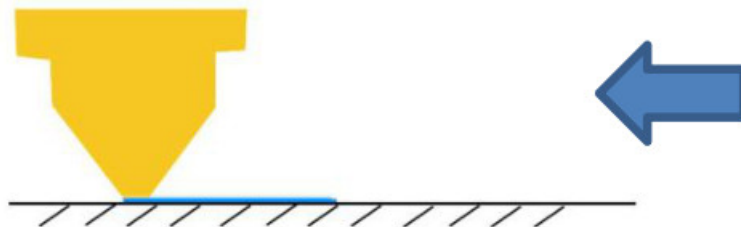




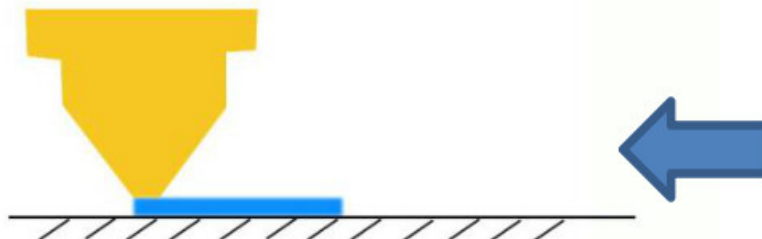
2. Test with A4 paper, adjust the nuts under the platform up and down, to make the nozzle just presses the A4 paper, and ensure that the four corners are the same distance. Repeat steps 1-2 times if necessary



## The normal distance



**Too close:** The short distance may lead to abnormal discharge or even damage caused by plugging the nozzle



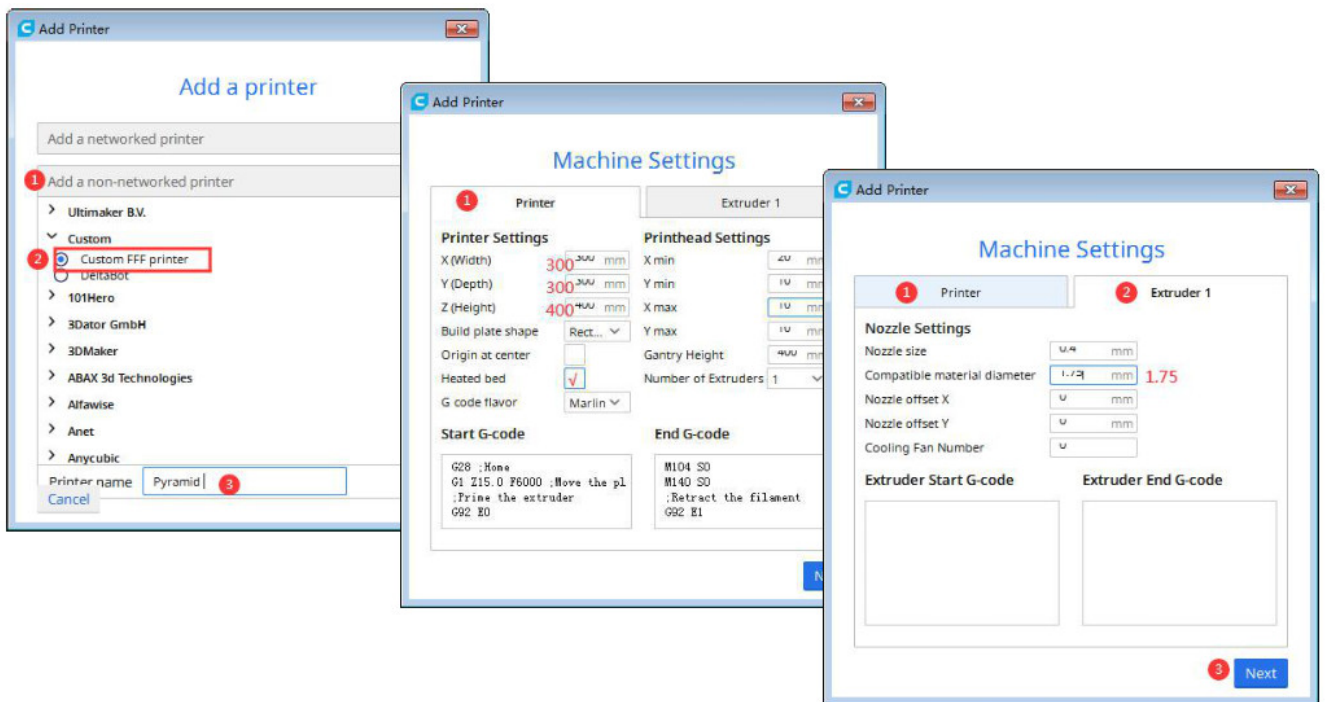
**Normal:** The correct distance will help you to complete the printing work better and more economically



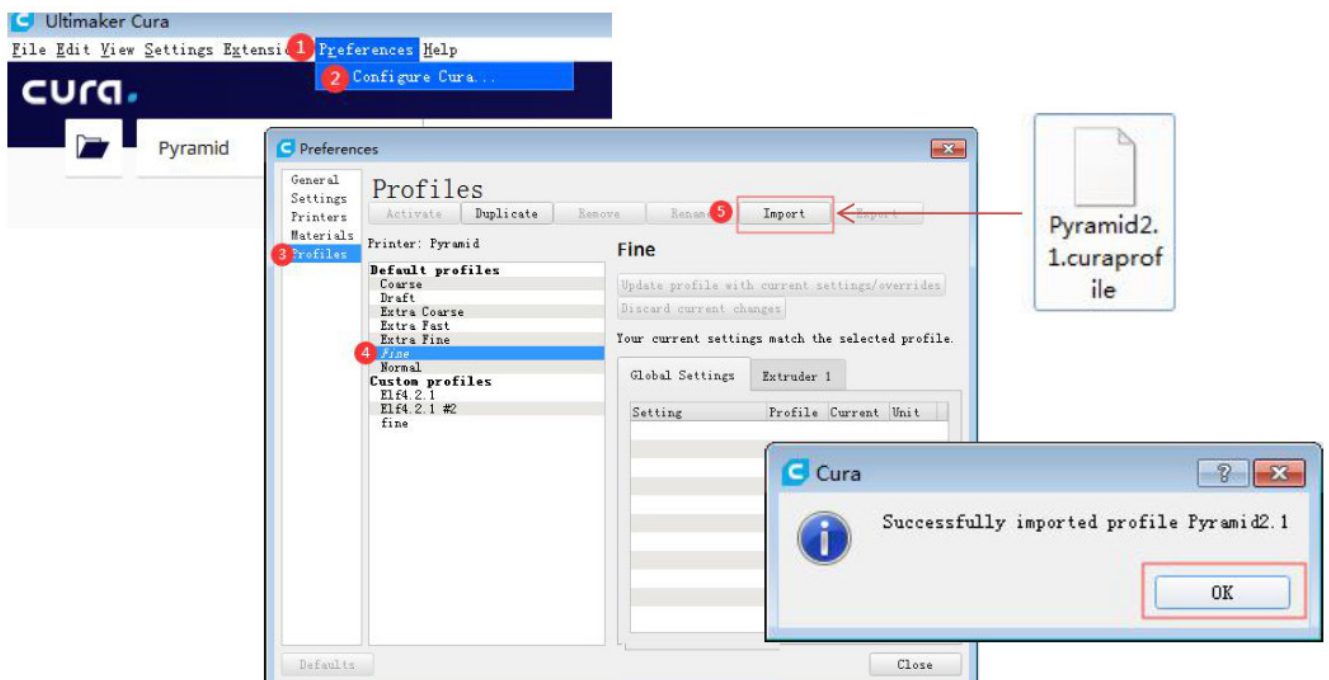
**Too far:** Too far distance will cause printing materials to be unable to attach to the hot bed, so that they cannot be printed normally

## Installation software

1. Open the SD card, find the CURA (or download online), After installing the software: Add a printer Settings

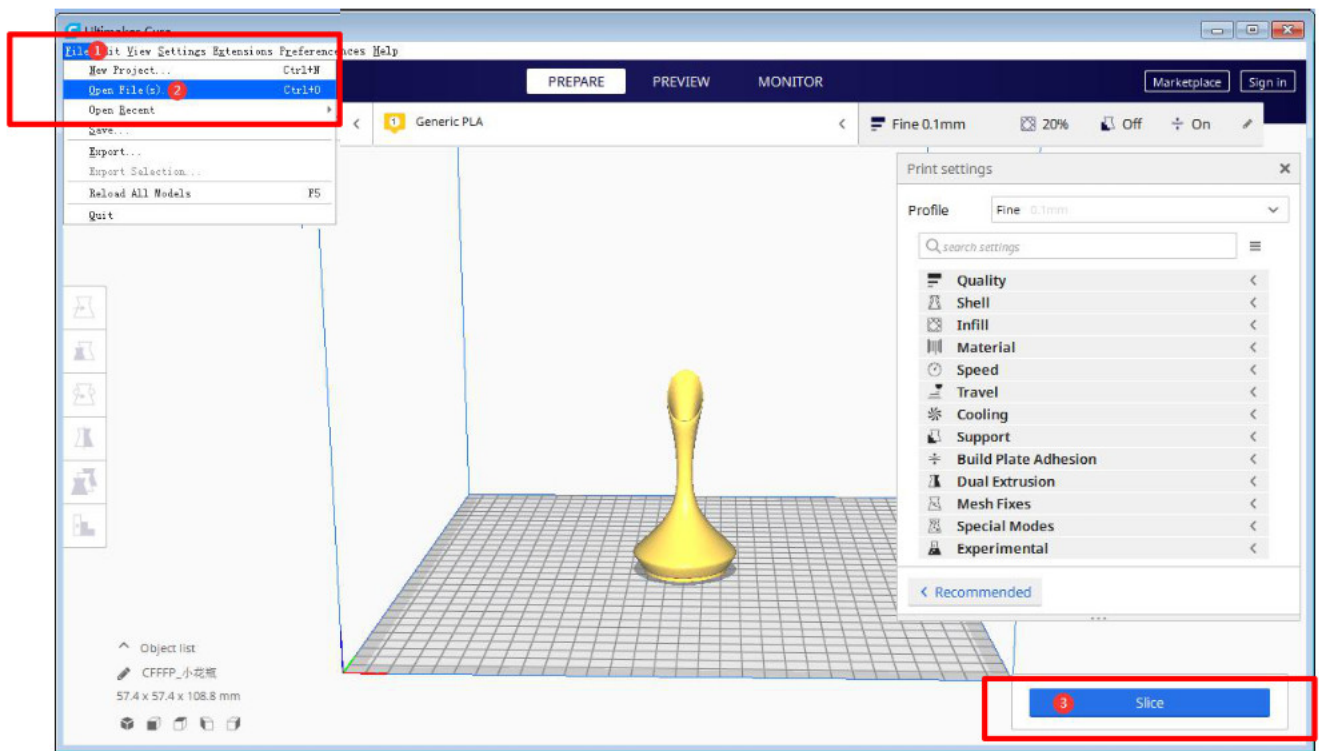


## 2. Import the profile from the SD card

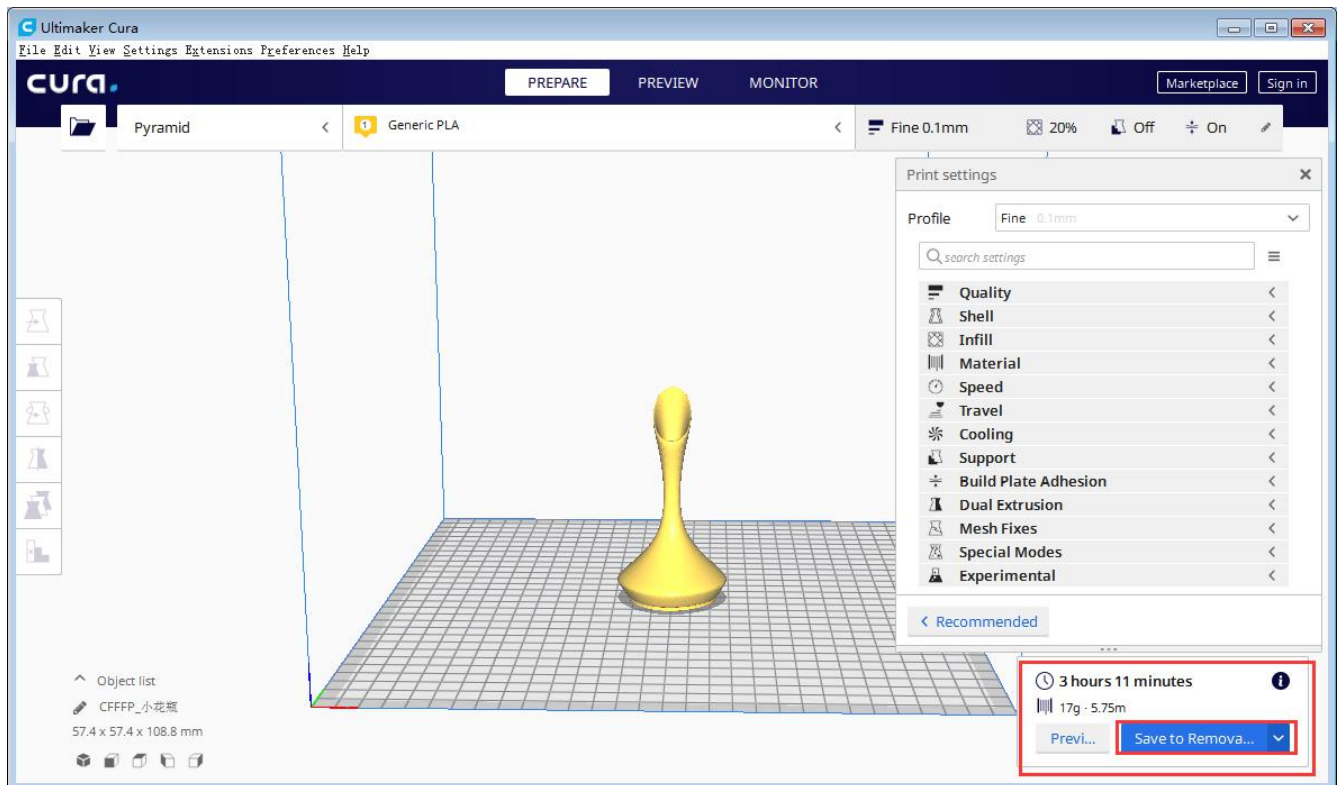


## Start printing

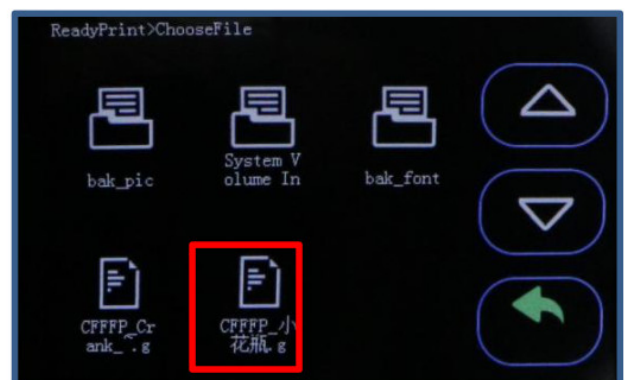
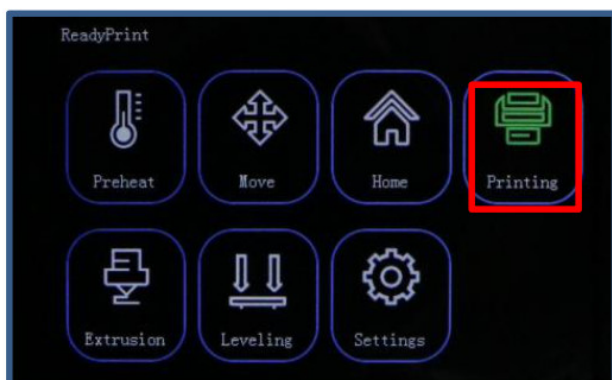
1. Open the Cura : File —Open file(Import your STL)— Slice



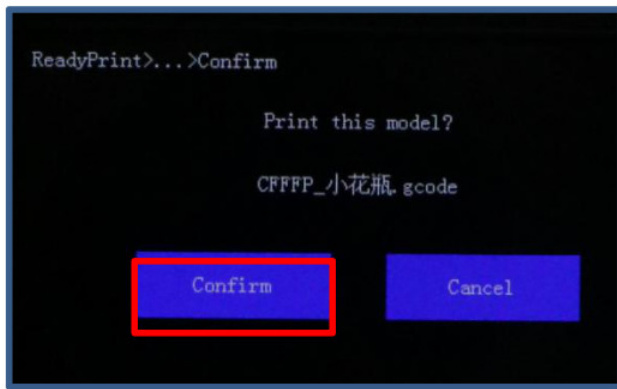
## 2. Save file to the TF card



## 3. Put the TF card to the printer, Select "Printing"—Select your file



## 4. Select "Confirm", then start printing after heating



## Warm reminder

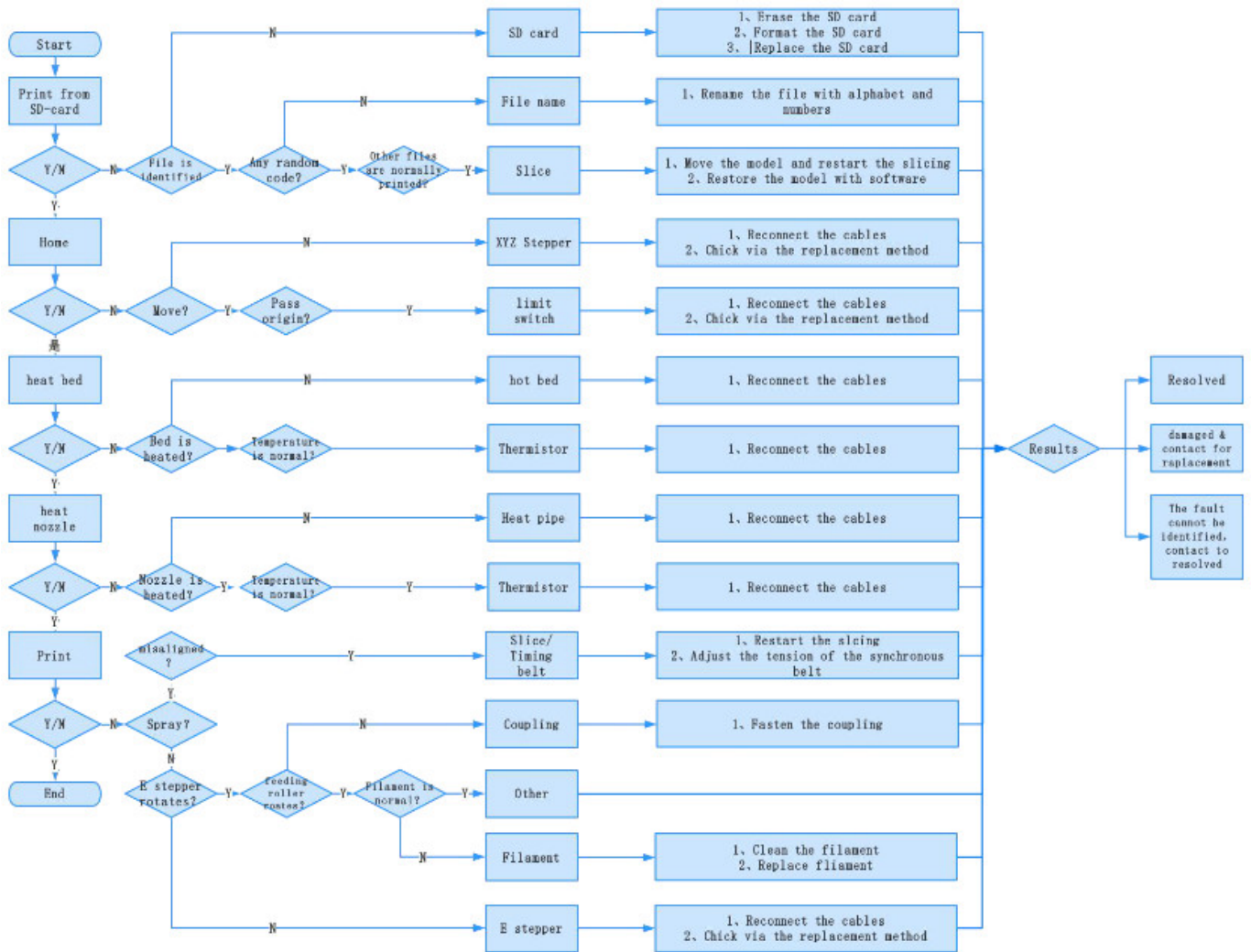
### Dear customers:

1. In order to ensure the quality of products, we will carry out printing test for each printer in the factory. If you find that the nozzle has slight traces of use, this is left by the printing test. We try to clean it up as much as possible, but please don't mind.
2. The factory test voltage is 220V. When installing, please select 110V or 220V according to your local power supply to ensure the printer can work normally. Please find the following power supply identification, and use a screwdriver or tweezers to move the regulator on the power supply.



## Trouble Shooting








**Tips:** More informations on the TF card

email: [service@fasttobuy.com](mailto:service@fasttobuy.com)  
Amazon: [fasttobuyli@gmail.com](mailto:fasttobuyli@gmail.com)  
Amazon store: [www.amazon.com/shops/toauto](http://www.amazon.com/shops/toauto)

## Documents / Resources

	<a href="#">Pyramind 3D Printer</a> [pdf] Installation Guide 3D Printer
---	--

Manuals+