




PYLONTECH Pelio-L-5.12 WI-FI Set Up Guidance Instructions

[Home](#) » [PYLONTECH](#) » PYLONTECH Pelio-L-5.12 WI-FI Set Up Guidance Instructions 

Contents

- [1 PYLONTECH Pelio-L-5.12 WI-FI Set Up Guidance](#)
- [2 Product Information](#)
- [3 Product Usage Instructions](#)
- [4 FAQ](#)
- [5 Instructions](#)
- [6 Wi-Fi logger network configuration](#)
- [7 Appendix](#)
- [8 Documents / Resources](#)
 - [8.1 References](#)



PYLONTECH Pelio-L-5.12 WI-FI Set Up Guidance



Product Information

Specifications

- **Model:** Pelio-L-5.12
- **Connectivity:** Wi-Fi
- **Compatibility:** Pylontech Home App

Product Usage Instructions

Step 1: Install Wi-Fi Logger

1. With the front of the logger (with the label) facing outwards, insert it into the WI-FI USB port.
2. Rotate the nut on the top of the logger clockwise until the buckle fits into the card slot, then rotate the nut half a turn to lock the WI-FI logger.

Please note: The white button on the front of the WI-FI logger (Logger Button) is used to trigger some functions of the logger.

- Short Press (2s~6s): The NET LED flashes fast, logger enters network configuration mode.
- Long Press (over 10s): Logger restores factory settings, only the STAT LED is on.
- The NET LED is on, the STAT LED flashes and the COM LED flashes intermittently, indicating that the collector is working normally.



Refer to the table below to understand the status of the WI-FI logger indicator LED:

| LED | LED Function | Status Description |
|----------------|---|---|
| LED off | Indicate the communication between the logger and the battery | Indicates that the logger failed to communicate with the battery |
| LED on | Indicate the communication between the logger and the battery | Indicates that the communication between the logger and the battery has been successfully established |
| LED fast flash | Indicate the communication between the logger and the battery | Indicates that the logger and the battery are communicating |
| LED off | Indicate logger network communication status | Indicates the logger network connection is abnormal |
| LED on | Indicate logger network communication status | Indicates the logger network connection is normal |
| LED fast flash | Indicate logger network communication status | Indicates the logger enters network configuration mode |
| LED off | Indicate the status of the logger | The logger is running abnormally |
| LED flash | Indicate the status of the logger | The logger is running normally |

Step 2: Wi-Fi Logger Network Configuration

Please note: Make sure the battery is turned on during the network configuration.

1. Download the **Pylontech Home App**. You can download it by:
 - Searching for “Pylontech Home” in Google Play/Harmony store or APP Store.
 - Scanning the QR Code below:

| Android/Harmony QR Code | iOS QR Code |
|---|---|
|  |  |

1. Open the Pylontech Home App and sign up or log in.
 - If you are a new user, follow the steps below:
 1. Select “Sign up” to register.
 2. Fill in the required information.
 3. After reading the Terms of Use and Privacy Policy, click the box to agree.
 4. Select “Signup” to finish registration.
 - If you already have an account, just enter your account and password to log in.

Please note: The organization code defaults to Pylontech. If your distributor provides you with other organization codes, please keep the corresponding codes and fill them in when registering an account. The organization code is used to bind the corresponding organization to obtain the after-sales service provided by them. Make sure the org code is correct. If you have any questions about this, please contact your local distributor for confirmation.

Select here to change languages.

FAQ

Q: How do I install the WI-FI logger?

A: To install the WI-FI logger, follow these steps:

1. Insert the logger into the WI-FI USB port with the front of the logger facing outwards.
2. Rotate the nut on the top of the logger clockwise until the buckle fits into the card slot, then rotate the nut half a turn to lock the WI-FI logger.

Q: How do I configure the network for the WI-FI logger?

A: To configure the network for the WI-FI logger, follow these steps:

1. Make sure the battery is turned on during network configuration.
2. Download the Pylontech Home App from the Google Play/Harmony store or the APP Store, or scan the provided QR Code.
3. Open the Pylontech Home App and sign up or log in.

If you have any further questions or issues, please contact our customer support.

Instructions

Please note

You must read this instruction manual carefully before installation to ensure you can install and use your battery correctly.

This document describes how to configure Pelio-L-5.12 of the Wi-Fi logger and how to set up the Pylontech Home APP.


Step 1: Install Wi-Fi logger



1. With the front of the logger (with the label) facing outwards, insert it into the WI-FI USB port;
2. Rotate the nut on the top of the logger clockwise until the buckle fits into the card slot, then rotate the nut half a turn to lock the WI-FI logger.



Please note: The white button on the front of the WI-FI logger (Logger Button) is used to trigger some functions of the logger.

- Short Press (2s~6s): The NET LED flashes fast, logger enters network configuration mode.
- Long Press (over 10s) Logger restores factory settings, only the STAT LED is on.
- The NET LED is on, the STAT LED flashes and the COM LED flashes intermittently, indicating that the collector is working normally.
- Refer to the table below to understand the status of the WI-FI logger indicator LED.

| LED | LED Function | Status Description |
|---|---|--|
|  | Indicate the communication between the logger and the battery | 1. LED off: Indicates that the logger failed to communicate with the battery 2. LED on: Indicates that the communication between the logger and the battery has been successfully established 3. LED fast flash: This indicates that the logger and the battery are communicating. |

| | | |
|---|--|---|
|  | Indicate logger network communication status | <ol style="list-style-type: none"> 1. LED off: Indicates the logger network connection is abnormal. 2. LED on: Indicates the logger network connection is normal 3. LED fast flash: Indicates the logger enters network configuration mode |
|  | Indicate the status of the logger | <ol style="list-style-type: none"> 1. LED off: The logger is running abnormally. 2. LED flash: This indicates the logger is running normally. |

Step 2: WI-FI Logger Network Configuration

Please note

Make sure the battery is turned on during network configuration.

- Download 'Pylontech Home App'. The download method is given below:
- Search 'Pylontech Home' in Google Play/Harmony store or the APP Store.
- Scan the QR Code below and download it directly.



Android/Harmony QR Code



iOS QR Code

- Android/Harmony QR Code iOS QR Code
- Open the Pylontech Home App, sign up and log in.
- New users can sign up following the steps below (1)(2)(3)(4)
- If you already have an account, just enter the account and password to log in
- The organization code defaults to Pylontech. If the distributor provides you with other organization codes, please keep the corresponding codes and fill in the codes when registering an account. The organization code is used to bind the corresponding organization to obtain the after-sales service provided by them.

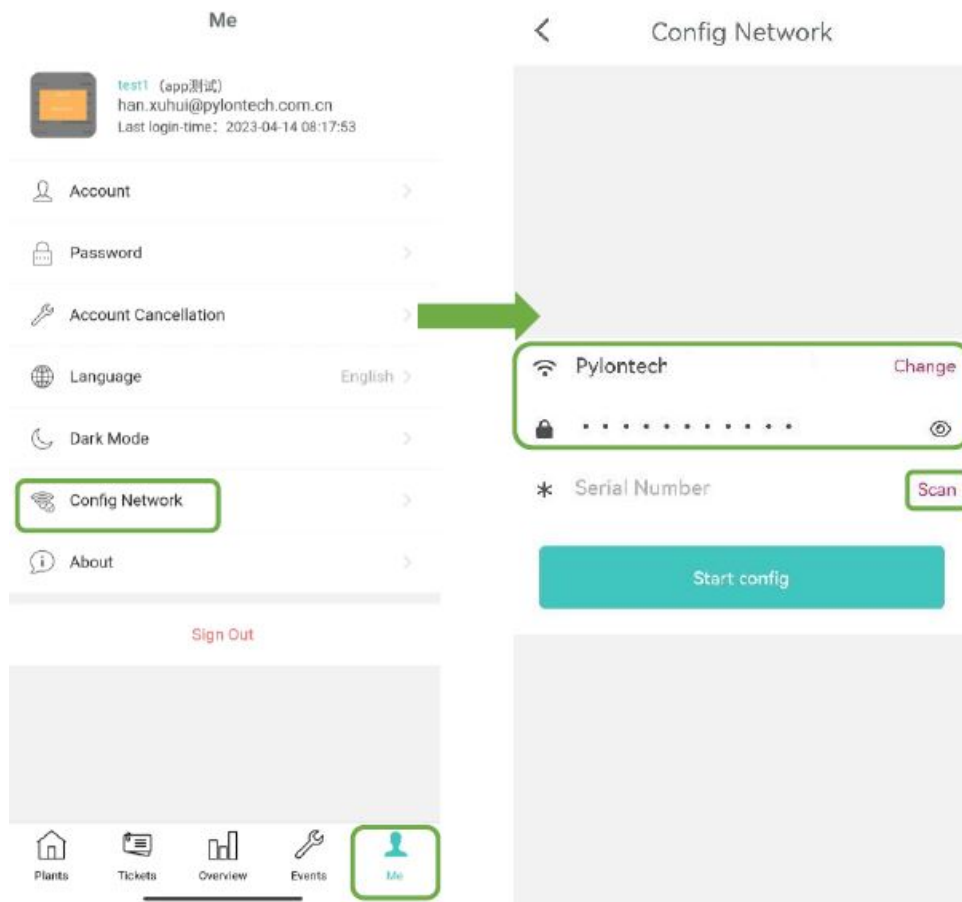
Please note: Make sure the org code is correct. If you have any questions about this, please contact your local distributor for confirmation.



Wi-Fi logger network configuration

Please note: Wi-Fi logger only supports 2.4GHz Wi-Fi networks 5GHz Wi-Fi cannot be connected.

1. Turn on the Bluetooth, Wi-Fi and location services (GPS) of the mobile device.
2. Press the white button on the front of the logger for 2~6 seconds and then release it until the NET indicator on the logger flashes quickly, at this time the logger enters the config network mode (the NET light of the logger is always on during the network config process) .
3. After logging in to the Pylontech Home App, enter the "Me" page and select "Config Network". At this time, the window will automatically pop up "Network Configuration Instructions" (new configuration instructions and screenshots are required), reading this instruction can guide you in network configuration.
4. Select the Wi-Fi network to be configured and enter the corresponding network password.

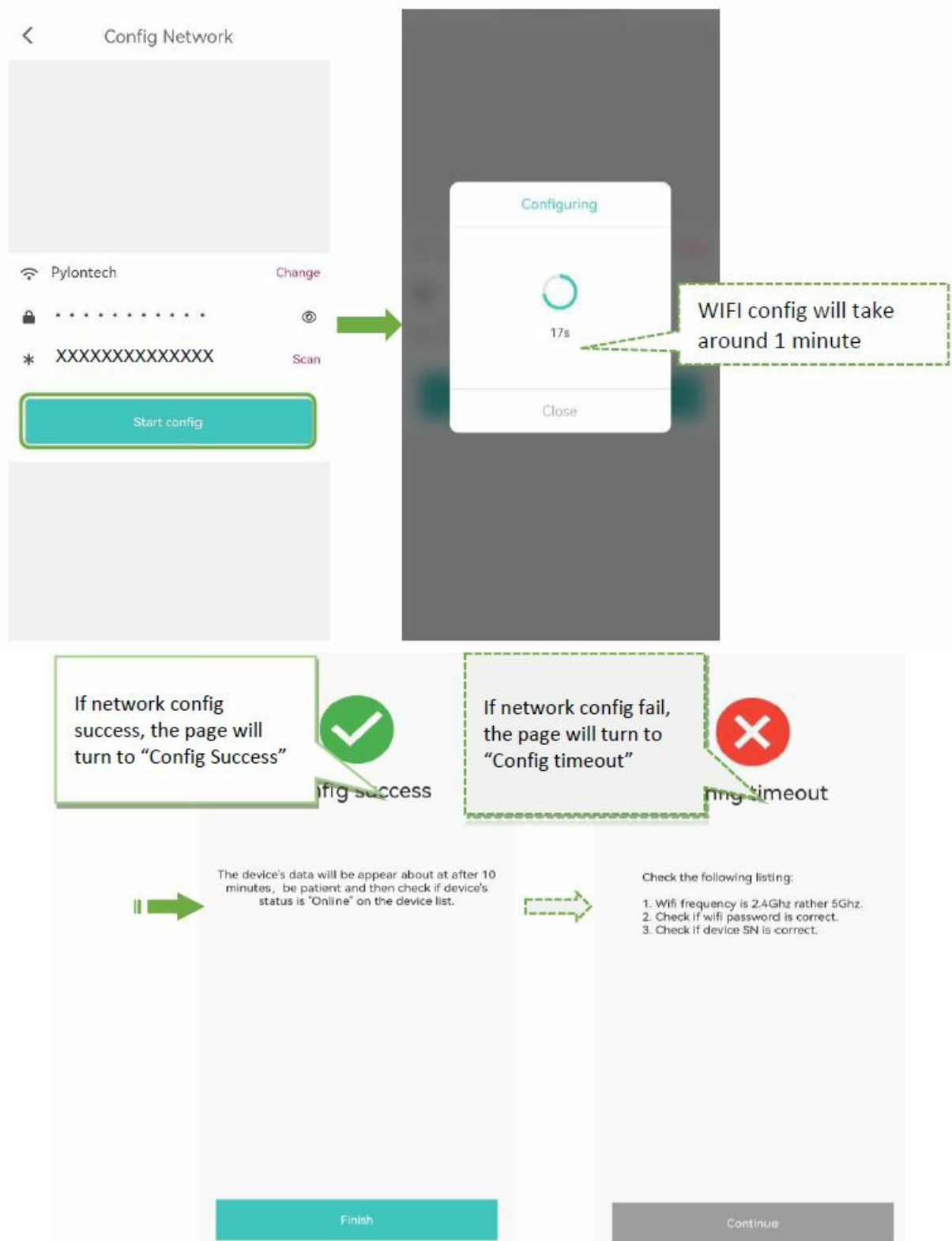


5. Enter the S/N of the logger

- **Method 1:** Select 'Scan' to get the QR code of the WIFI logger
- **Method 2:** Type in the SN on the logger manually



6. Select "Start config", the progress will take around 1 minute



Note: After selecting 'Start Config', if you confirm that the device has exit config network mode (see the first step to confirm the status of the flashing light on the logger), you can click "Close", and re-try the above step (2) then clicking "Start Config".

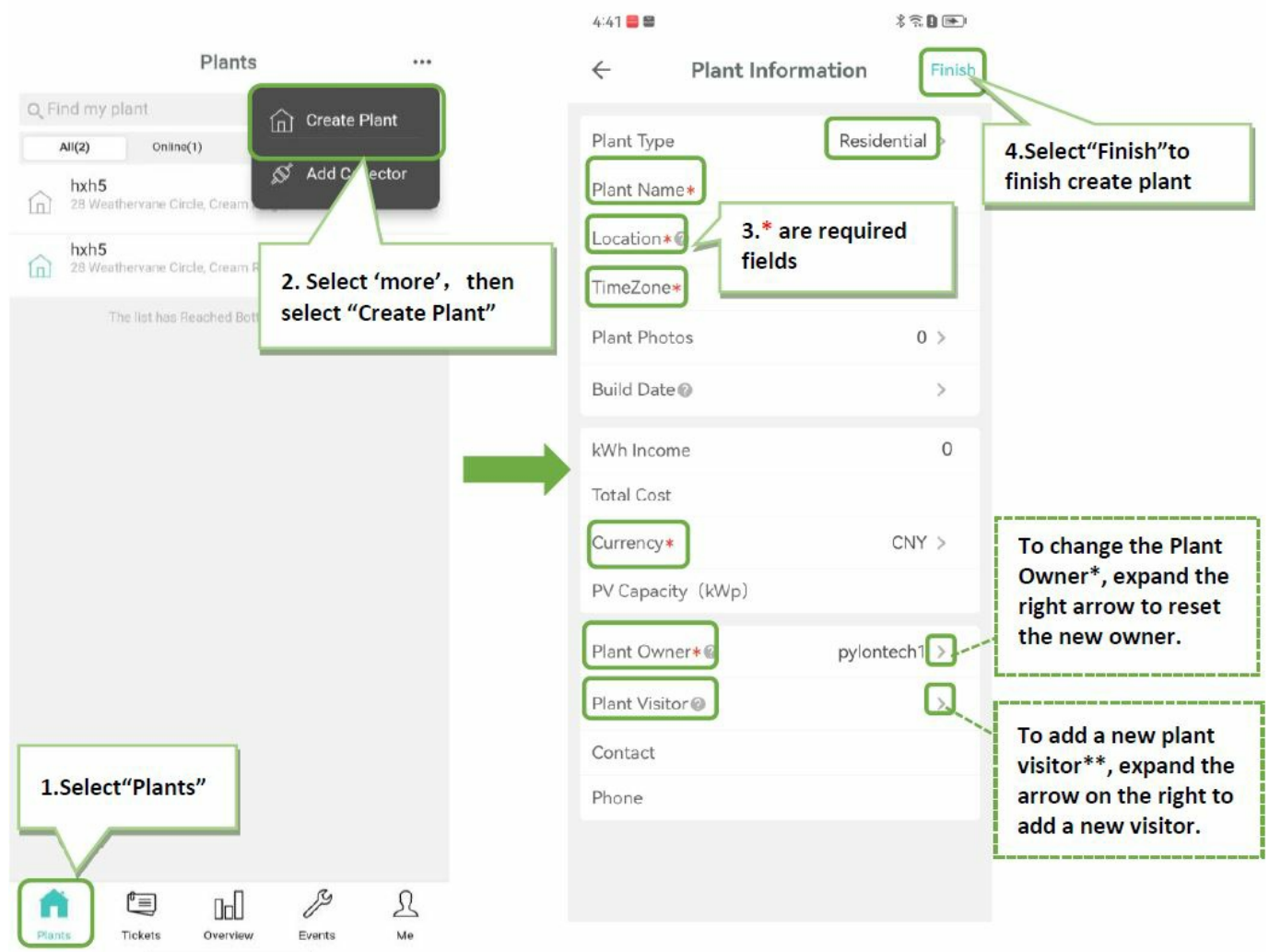
Please note: if the network config fails, please check the following reasons and re-configure the network according to the above steps:

- Make sure WLAN is ON;
- Make sure the Wi-Fi network;
- Check whether the Wi-Fi network password is entered correctly;
- Make sure the wireless router is not blacklisted;

- Remove special characters in Wi-Fi network name;
- Shorten the distance between mobile phone and device, device and router;
- Try to connect to another Wi-Fi network.

Step 3: Create Plant

1. Select "Plants" and enter the plant page;
2. Select 'more' then select "Create Plant"
 - Fill in the plant information (* is required information);
 - Plant Owner: About Plant Owner, please note the following settings:
 - The plant Owner's name is automatically generated when registering an account. If you want to change the name of Plant Owner please do the following steps after "Create Plant"
 - Exit the current page → enter the "Me" page → Select "Account" → Enter your custom name in the "Nick Name" column → Select "Confirm and Save" under the current page to complete the modification.
 - If you want to reset the Plant Owner, expand the right arrow to reset the new owner.
 - Plant visitor: Select Plant Visitor you can add a plant visitor
3. Select "Finish" on the right-hand corner and finish creating the plant.



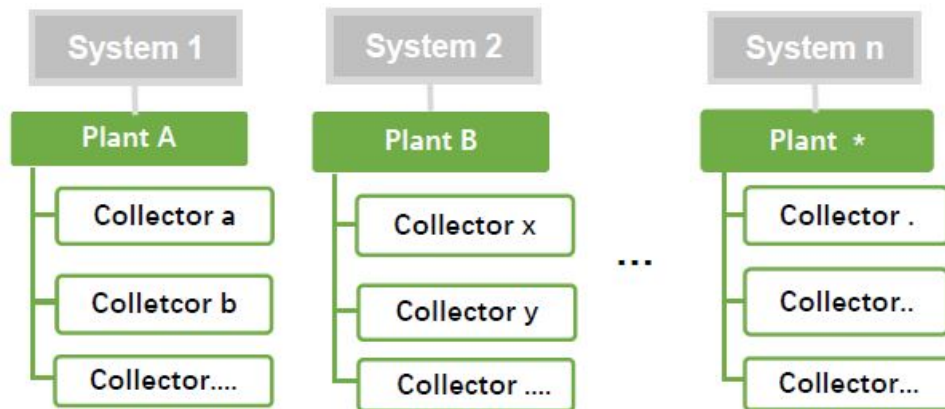
- The plant Owner is the owner of the plant and has full access to the plant, including modifying and deleting the

plant, as well as managing all visitors to the plant and setting up new owners.

- Plant Visitor is a visitor, who has permission to view plant information and add collectors; but does not have permission to delete plants.
- **Please note:** You can build multiple plants for different battery systems. If you need to add more power stations, please repeat the above steps.

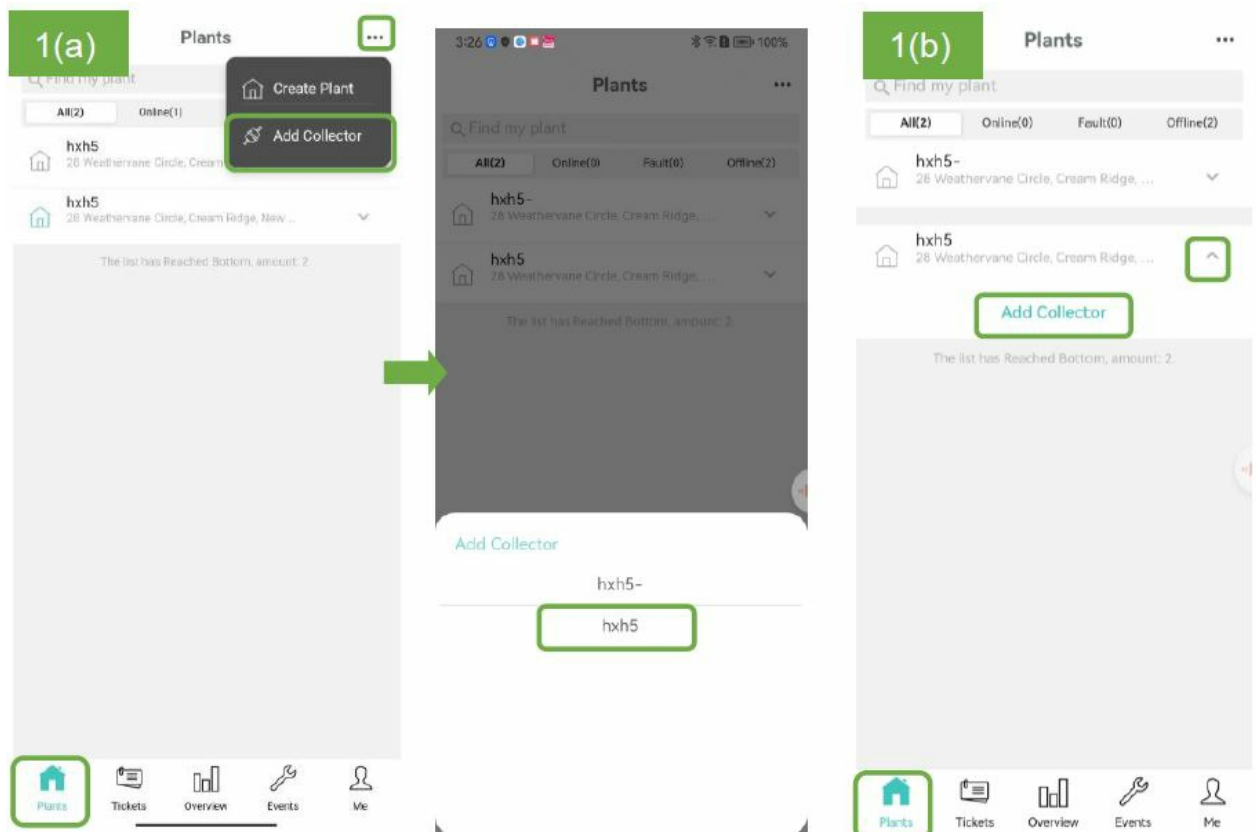
Step 4: Add Collector

Please note: To facilitate your view and manage the information of different batteries in the same system, it is recommended to add their collectors under the same plant.



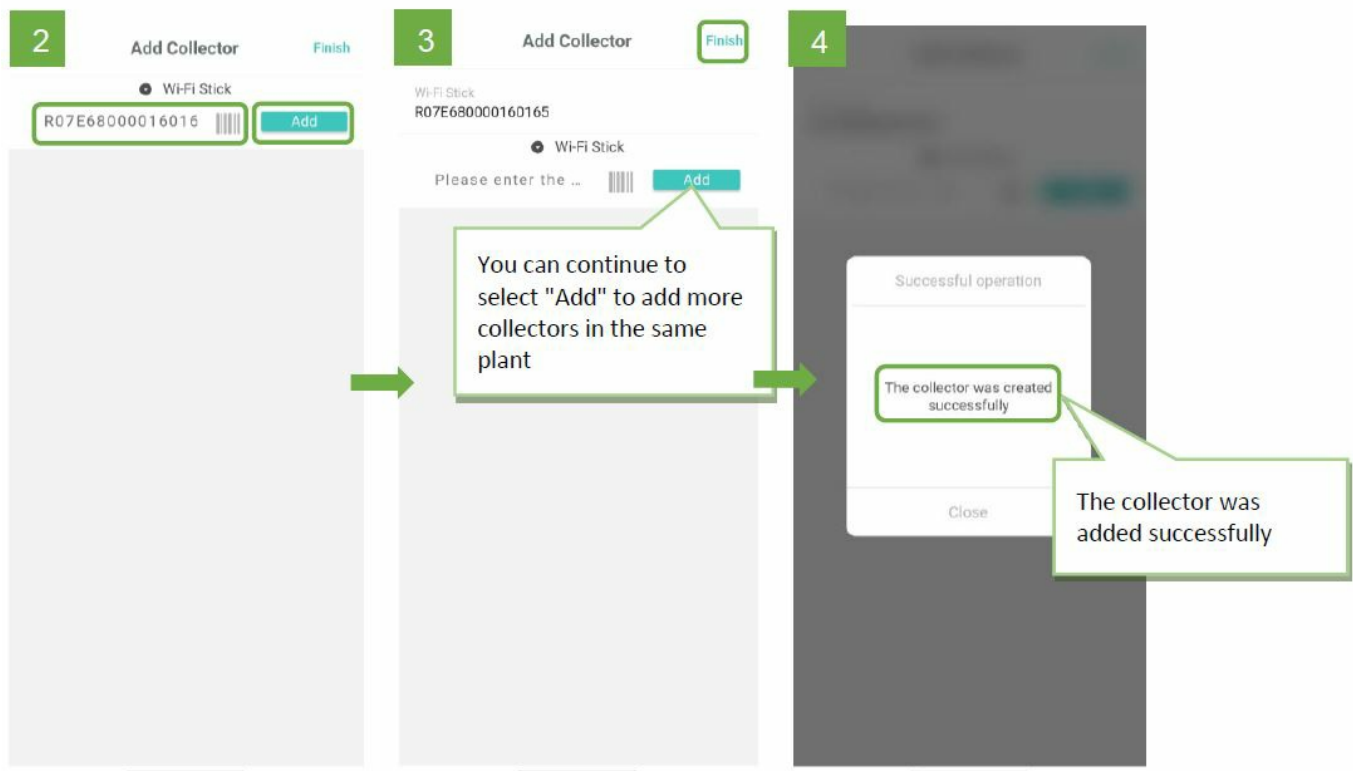
1. Choose one of the following two methods (a or b) to enter the “Add Collector”

- Select “Plants” → Select “More” in the upper right corner → Select “Add Controller” → Select a plant you want to add;
- Select “Plants” → Select the plant expand the arrow on its right side and Select “Add Controller”.



2. Scan the QR code on the front of the Wi-Fi logger or manually enter the SN number of the logger, and Select “Add”.

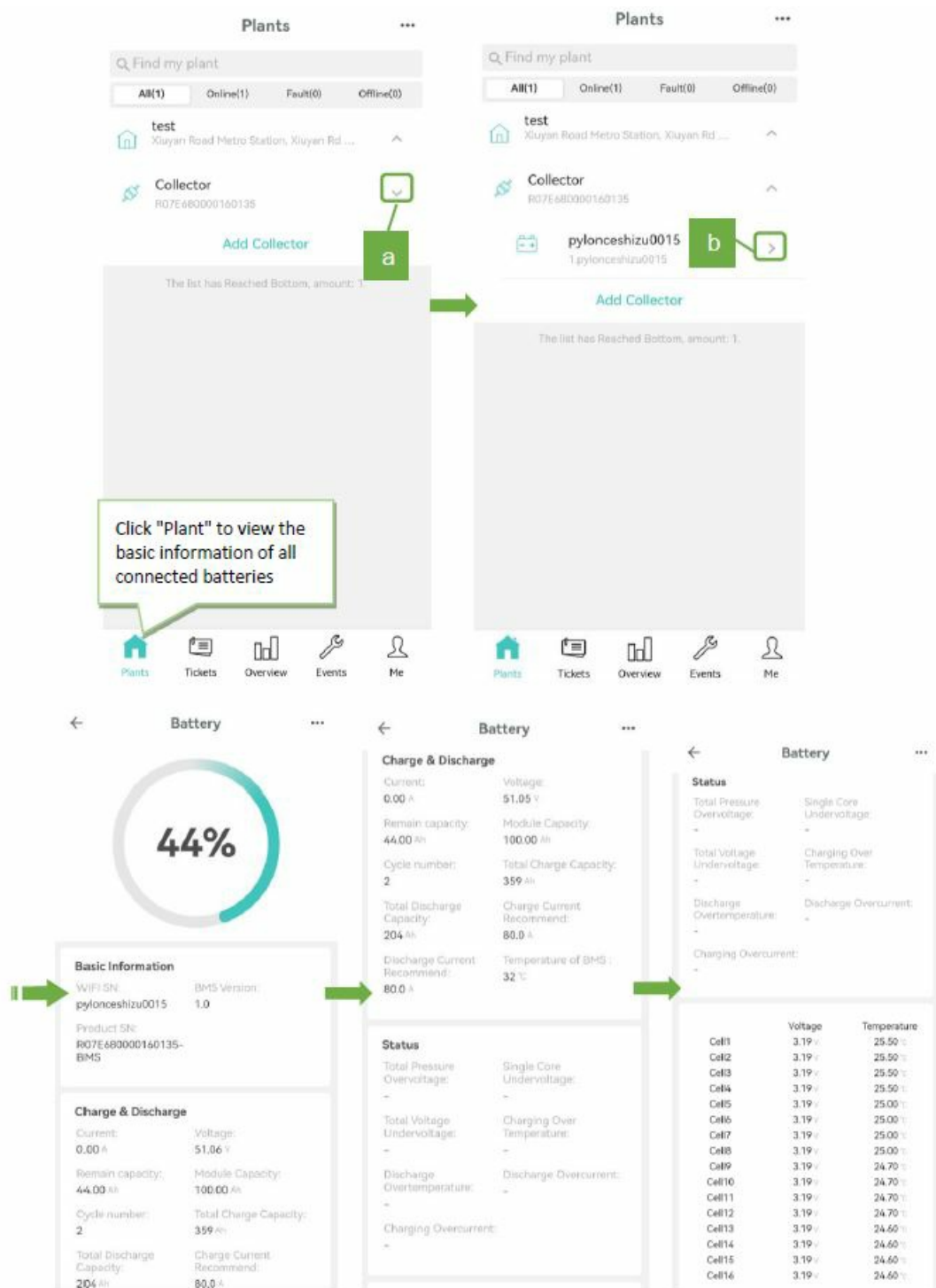
3. After adding, Select “Finish” in the upper right corner to save and exit.
4. The collector was added successfully.



Appendix

Appendix: Pylontech Home App user guide

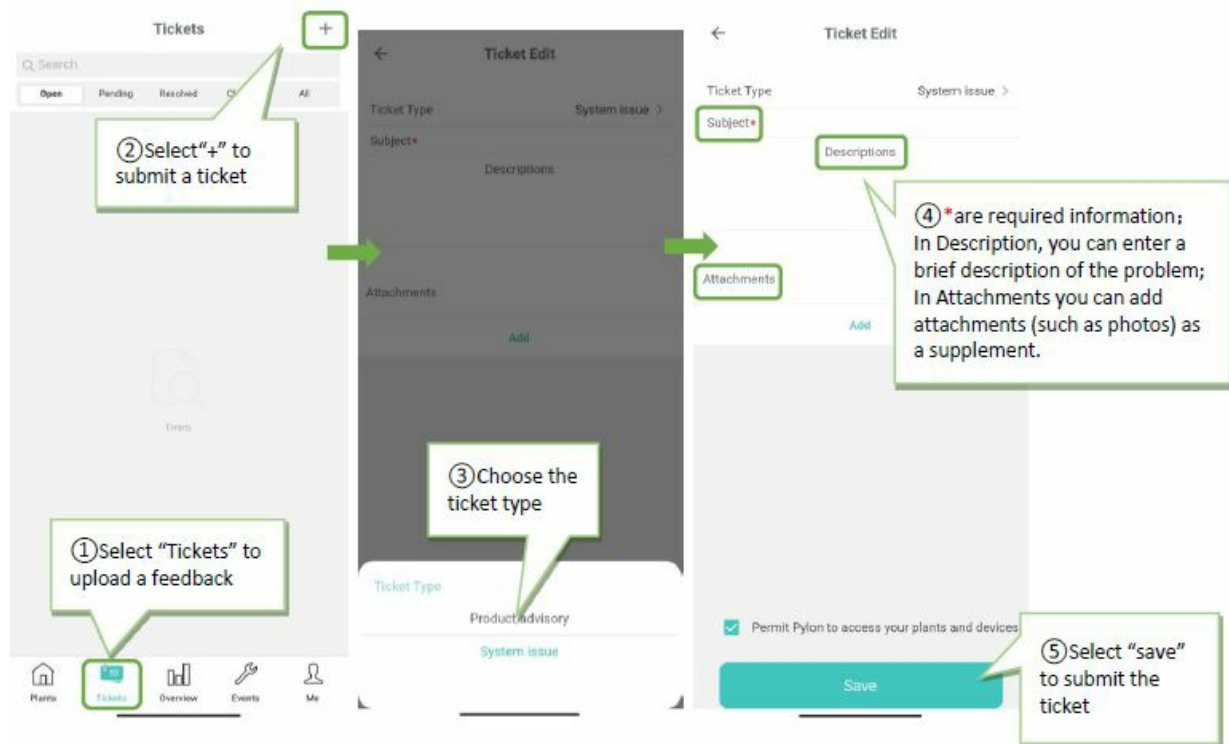
1. Select “Plants” to view the detailed information about the plant you have added.
 - Select the plant you want to view, and select the arrow on the right to display all battery information connected to the power station.
 - To view battery detailed information, you can expand its arrow to display including battery basic information, charging/discharging parameters and status.



Note: For battery information, please refer to the following table:

| | | |
|-------------------------------|--------------------------------|---|
| Basic Information | Wi-Fi SN | SN (serial number) of Wi-Fi logger |
| | Product SN | SN (serial number) of BMS |
| | BMS version | A version of BMS software |
| Charge & Discharge | Current(A) | The current of the battery during its working status |
| | Voltage (V) | Voltage of the battery |
| | Remain Capacity (Ah) | The remaining capacity of the battery |
| | Module Capacity (Ah) | Total capacity of the battery module |
| | Cycle number | Cycle count of the battery that has been used |
| | Total Charge Capacity (Ah) | The total charge capacity of the battery |
| | Total Discharge Capacity (Ah) | Total discharge capacity of the battery |
| | Charge current recommend(A) | Recommended charge current for the battery |
| | Discharge current recommend(A) | Recommended discharge current for the battery |
| | Temperature of BMS(°C) | Temperature of the BMS module |
| Status | Total Pressure Overvoltage | It will display “Y” if the described status is triggered; otherwise, it will display “-”. |
| | Single Core Undervoltage | |
| | Total Voltage Under Voltage | |
| | Charging Over Temperature | |
| | Discharge Over Temperature | |
| | Discharge Overcurrent | |
| | Charging Overcurrent | |
| Cell Data (Cell 1~n) | Voltage (V) | The voltage of the single-cell |
| | Temperature (°C) | Temperature of the single-cell |

- You can give us feedback by submitting “Tickets” on:
- Product Advisory
- System Issue

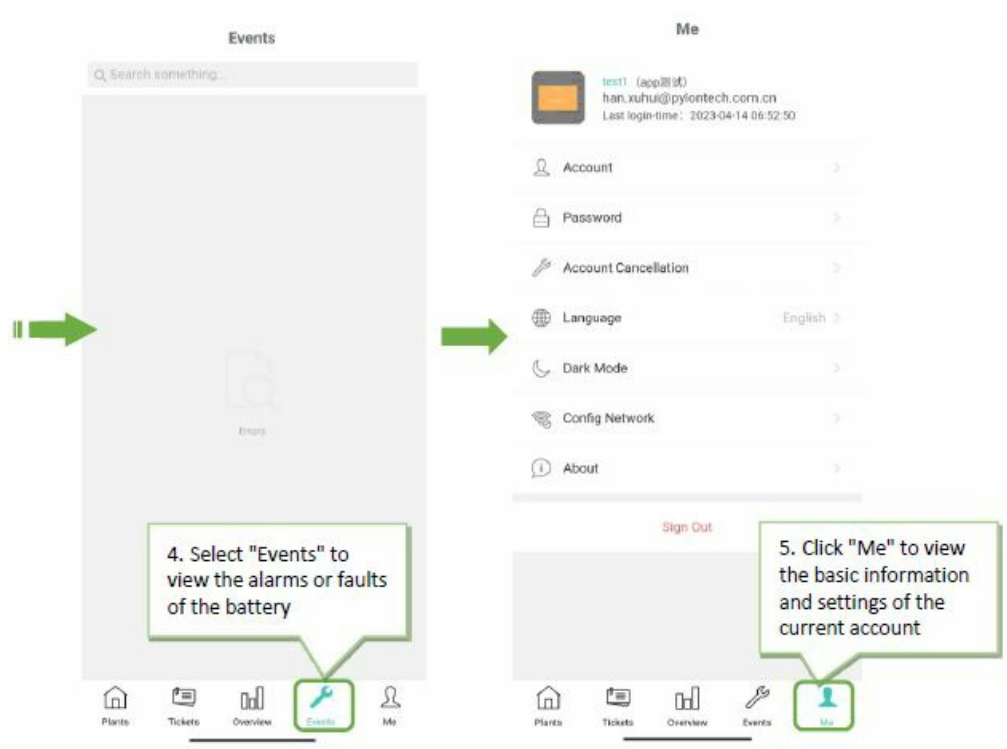


- Select “Overview” to view the operation status of your plant (can be viewed by Day/Month/Year/Total)




Note: The above overview information is described as follows:

- Taking the above diagram as an example, “54%” is the remaining capacity of the battery (%); “204Ah” is the total discharge capacity of the battery (Ah); “203.39 G” is the estimated carbon emission savings (G).
- The chart shows the charged power of the battery in a specific period (day/month/year/total); the horizontal axis shows the period you selected, and the vertical axis corresponds to the charged power of the battery in this period.
- Select “Events” to view the alarms or faults that the system detects when the battery is abnormal. Please contact the after-sales service to solve it.
- Select ‘me’ and you can log out of the current account or reconfigure a new device.



Documents / Resources

| | |
|---|---|
|  | <p>PYLONTECH Pelio-L-5.12 WI-FI Set Up Guidance [pdf] Instructions Pelio-L-5.12 WI-FI Set Up Guidance, Pelio-L-5.12, WI-FI Set Up Guidance, Set Up Guidance, U p Guidance, Guidance</p> |
|---|---|

References

- [User Manual](#)

[Manuals+](#), [Privacy Policy](#)

This website is an independent publication and is neither affiliated with nor endorsed by any of the trademark owners. The "Bluetooth®" word mark and logos are registered trademarks owned by Bluetooth SIG, Inc. The "Wi-Fi®" word mark and logos are registered trademarks owned by the Wi-Fi Alliance. Any use of these marks on this website does not imply any affiliation with or endorsement.