



PyleUSA PGMC1PS4 Game Console Handle Wireless Controller User Guide

[Home](#) » [PYLEUSA](#) » PyleUSA PGMC1PS4 Game Console Handle Wireless Controller User Guide 

Contents

- [1 PyleUSA PGMC1PS4 Game Console Handle Wireless Controller](#)
- [2 Product Information](#)
- [3 Product Usage Instructions](#)
- [4 Overview](#)
- [5 Introduction](#)
- [6 Product Function](#)
- [7 Controller Button](#)
 - [7.1 CONTROLLER REFERENCE CURRENT](#)
- [8 Documents / Resources](#)
 - [8.1 References](#)
- [9 Related Posts](#)



PyleUSA PGMC1PS4 Game Console Handle Wireless Controller



Product Information

The PGMCI PS4 is a wireless game console handle controller with LED lights, a built-in speaker, and a 6-axis sensor. It has a standard game console work mode that allows users to perform any function in the game, including basic digital and analog buttons, a six-axis sensor function, and an LED color display function. It also supports vibration functions for specific games. The controller has a light bar that displays various colors to distinguish players when multiple controllers are connected to the game console at the same time.

Product Usage Instructions

1. Read the instruction manual thoroughly before using the unit and keep it for future reference.
2. To use the controller on a Windows 10 PC, connect it to the USB-A port and install the game controller by following the instructions on the screen. Test the game controller and calibrate it if necessary.
3. To connect the controller to a PS4/PS3 console, connect it to the USB port and press the P4 key. The LED light of the controller will display a constant bright color, indicating that the controller has been connected to the console. When there are multiple controllers connected to the console at the same time, the LED light of the controller will display different colors to distinguish different users and players.
4. To use the controller on an Android system device, connect it to the USB port, and it will be automatically recognized as the Android Controller mode.

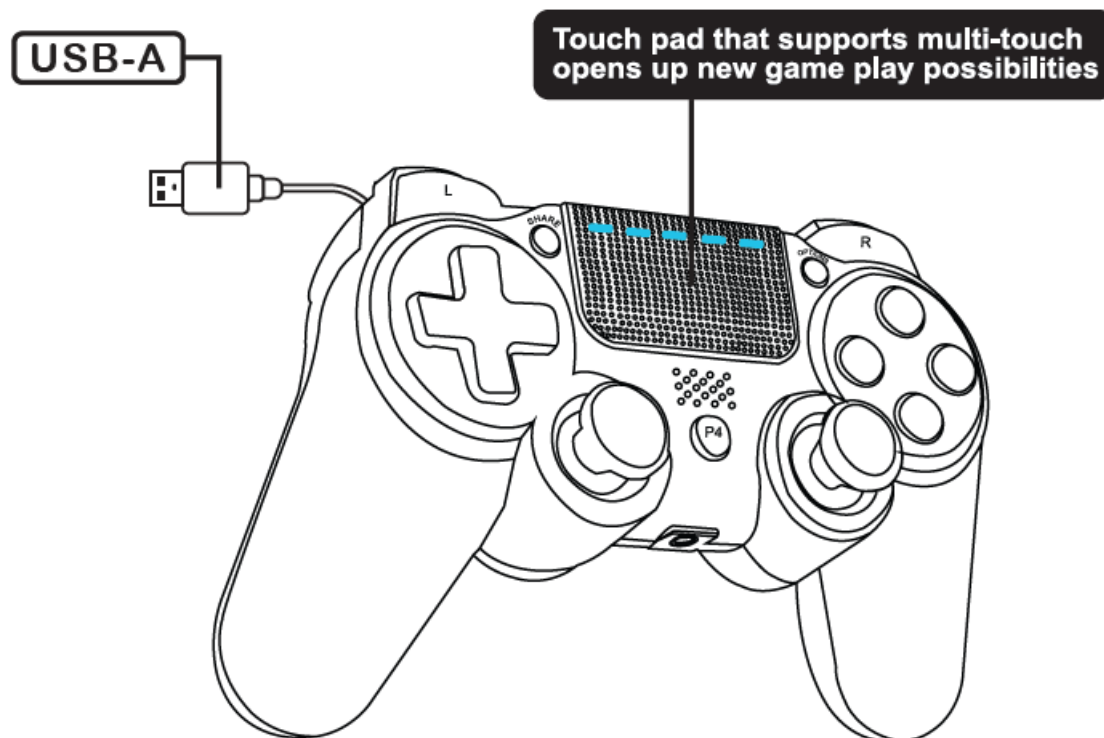
Scan Me



Overview

Please read this instruction manual thoroughly before using the unit. Please keep it for future reference. Please read this Manual in detail before use in order to operate and use it correctly, and bring the superior performance of the product into full play. The descriptions in this Manual are based on the default settings of the device. All the pictures, statements, and text information in this Manual are for reference only. Please refer to the

actual product. The content is subject to update without further notice. The update will be included in the new version of the Manual, and the Company reserves the right to final interpretation. Available functions and additional services may vary by device, software, or service provider. If there are typographical errors or translation errors, we sincerely hope for all users to understand!



California Prop 65 Warning

WARNING:

This product contains Nickel carbonate which is known to the state of California to cause cancer birth defects and other reproductive harm. Do not ingest.

For more info go to: www.P65warnings.ca.gov.

Introduction

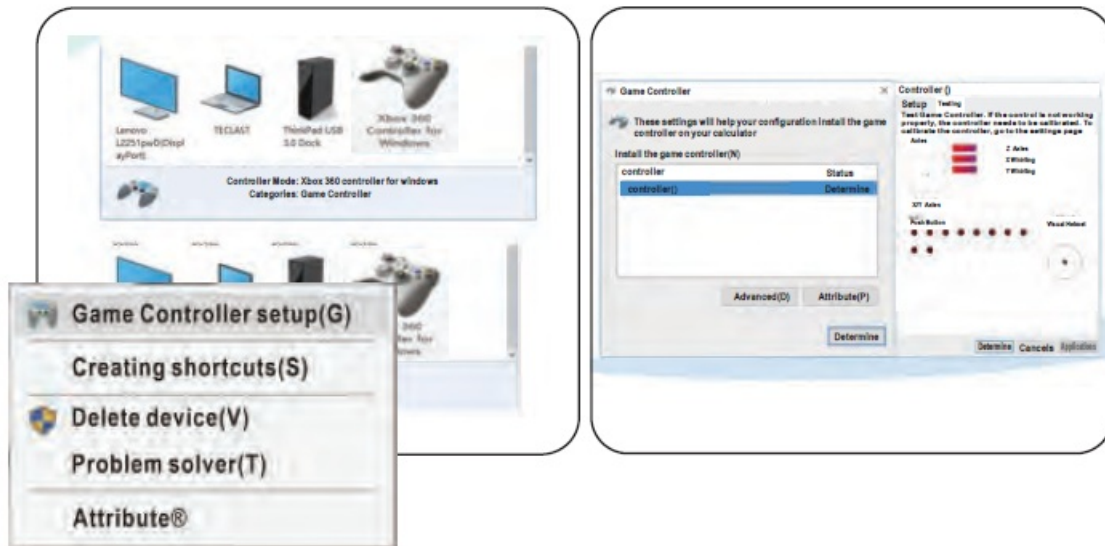
1. The Controller is equipped with a light bar that displays various colors. Different light bar colors can be used to represent different game players and can be used as an important message reminder (for example, the game character's health is reduced, etc.). In addition, the light bar can also interact with the Camera, allowing the Camera to determine the Controller's action and distance through the light bar.
2. Standard buttons: P4, Share, Option L1, L2, L3, R1, R2, R3, VRL, VRR.
3. The Controller supports any software version of the video game console.
4. The controller uses the standard game console function (The same function as the original controller, can work on the PC through the driver, supports X-Input and D-Input, no need for a driver on Windows 10), and supports Android system devices.

Product Function

1. Standard game console work mode

Any function in the game can be realized on the game console, including basic digital and analog buttons, as well as the six-axis SENSOR function and LED color display function, and can also support vibration functions

for specific games. When tested on the Windows 10 PC there will appear a virtual 6-axis 10 key + visual helmet function of the device, 6 Axis 10 Key 1POV in Windows 10 system default interface mode (X-Input mode).



2. Color LED Indication

When multiple Controllers are connected to the game console at the same time, the controller LED will display different colors to distinguish players. For example, user 1 displays blue, and user 2 displays red. PC360 (X-Input, D-Input) displays green; Android Controller mode displays blue.

3. Game Console Connection Method

Connect the Controller to the USB port of the PS4/PS3 console and press the P4 key, the LED light of the controller will display a constant bright color, indicating that the Controller has been connected to the console. When there are multiple Controllers connected to the Console at the same time, the LED light of the Controller will display different colors to distinguish different users and players.

4. PC Wired Connection

Connect the Controller USB cable to the USB port of the Computer, and the Computer will automatically install the driver. You can see the driver is being installed in the Windows 7/10 interface. After the driver is installed, the Controller icon will appear in the "Device and Printer" interface and the device name is "PC Gamepad". Press and hold the "Share + Options" combination key for 3 seconds, you can switch to PC mode (D-Input) from (X-Input) and the display name is "PC Gamepad". X-Input and D-Input modes can be switched between each other through this combination key.



5. Android System Devices Connection Method

Connect the Controller USB cable to the USB port of the Android system devices, and the Controller will be automatically recognized as the Android Controller mode.

Controller Button

Controller Button Corresponding Table

PS4					L1	R1	L2	R2	share	option	L3	R3	P4	T- PAD
PC	1	2	3	4	5	6	7	8	9	10	11	12	13	14
X- IN	3	1	2	4	5	6	L2	R2	7	8	9	10	Home	----
PS3					L1	R1	L2	R2	select	START	L3	R3	PS	----
ANDROID	x	a	b	X	L1	R1	L2	R2	select	START	L3	R3	Home	----

PC GAMEPAD MODE



PC~X IN MODE



CONTROLLER REFERENCE CURRENT

PARAM	SYMBOL	MIN DATA	TYPICAL DATA	MAX DATA	UNIT
WORKING VOLTAGE	Vo			5	V
WORKING CURRENT	Io		30		m A
MOTOR CURRENT	Im			80 – 100	m A

VISIT US ONLINE:

- Have a question?
- Need service or repair?

- Want to leave a comment?

PyleUSA.com/ContactUs.


Questions? Issues?

We are here to help!

Phone: (1) 718-535-1800

Email: support@pyleusa.com.

Documents / Resources

	<p>PyleUSA PGMC1PS4 Game Console Handle Wireless Controller [pdf] User Guide PGMC1PS4 Game Console Handle Wireless Controller, PGMC1PS4, Game Console Handle Wireless Controller, Handle Wireless Controller, Wireless Controller</p>
---	---

References

- [P Pyle USA Electronics | Home Audio | Car Audio & More](#)

[Manuals+](#).