



Pyle PLUTV45BTR Bluetooth Speakers User Manual

[Home](#) » [Pyle](#) » Pyle PLUTV45BTR Bluetooth Speakers User Manual 

Contents

- [1 Pyle PLUTV45BTR Bluetooth Speakers](#)
- [2 Product Introduction](#)
- [3 PLUTV45BTR Installation](#)
- [4 Remote Control Functions](#)
- [5 Features](#)
- [6 Wireless BT Connectivity](#)
- [7 What's in the Box](#)
- [8 Technical Specs](#)
- [9 Questions? Issues?](#)
- [10 FAQs](#)

PYLE

Pyle PLUTV45BTR Bluetooth Speakers



Product Introduction

Pyle 800W Dual Marine Grade Off-Road Speaker System

Elevate the audio experience on any outdoor adventure with Pyle's state-of-the-art 800W dual marine grade off-road speaker system. Tailored for passionate enthusiasts, this system is a perfect companion for boats, ATVs, UTVs, quads, Jeeps, and other rugged vehicles. Here's why:

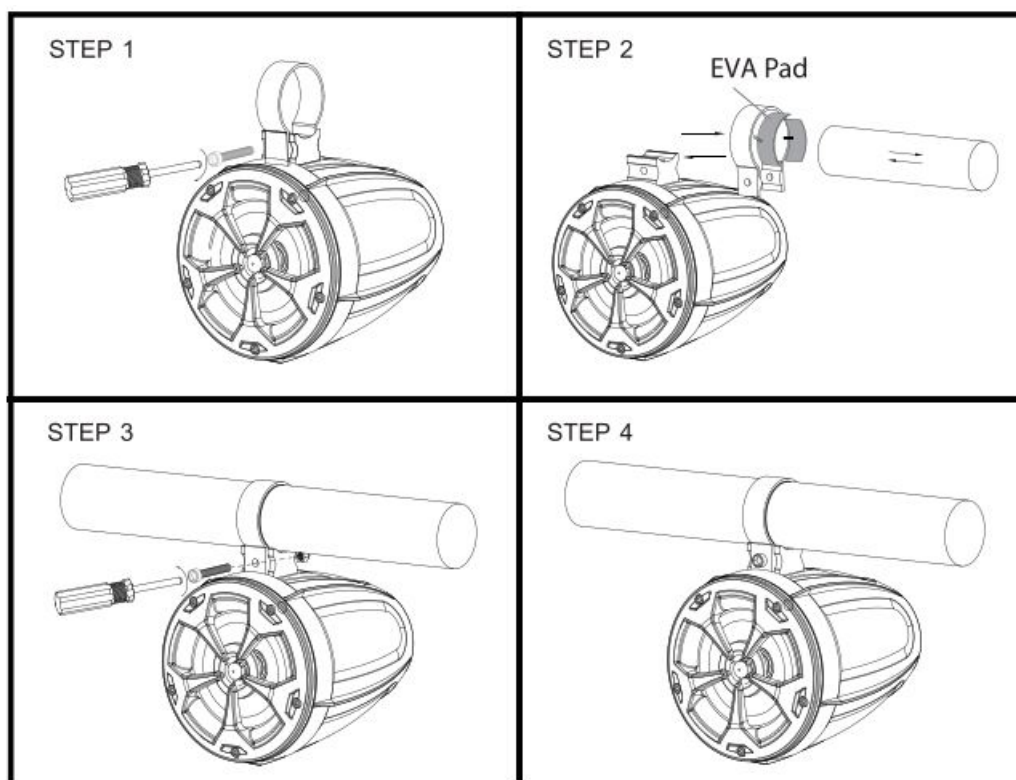
- **Crystal Clear Audio:** Equipped with a pair of 4-inch active and passive two-way speakers, expect immersive, full-range sound reproduction. Whether cruising on water or navigating challenging terrains, indulge in top-notch audio quality.
- **Seamless Connectivity:** Stream your favorite tracks wirelessly! Thanks to its Bluetooth compatibility, it effortlessly pairs with devices such as iPhones, Android smartphones, or iPads. The built-in Bluetooth module in the amplifier ensures stable connections for uninterrupted musical vibes.
- **Robust Components:** At the heart of this speaker kit is a powerful 20oz magnet structure, combined with 0.5" neodymium dome tweeters, 4" polypropylene cones with butyl rubber surround, and a 1" aluminum mid-woofer voice coil. Together, they produce rich, dynamic, and balanced audio.
- **Built for Adventures:** Crafted with precision, these speakers boast an IP-X5 marine-grade waterproof construction. Whether it's a splash of water or sudden downpours, the weatherproof and water-resistant housing guarantees performance. Plus, its sleek design is complemented by a durable, machine-molded speaker cabinet.
- **Flexible Installation:** The universal mounting design offers versatility. Encased in a heavy-duty molded cabinet with butyl rubber surrounds, these speakers can be effortlessly attached to support bars, frames, or roll-cages. The package also provides connection wires, butt connectors, and mounting pads to ensure a

hassle-free setup.

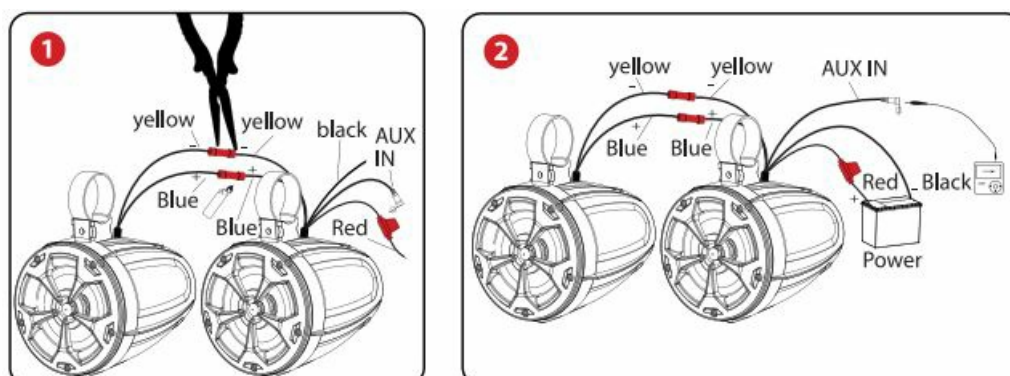
In essence, Pyle's off-road speaker system promises a combination of unmatched audio quality, ruggedness, and connectivity, amplifying every moment of your journey. Experience it to believe it!

PLUTV45BTR Installation

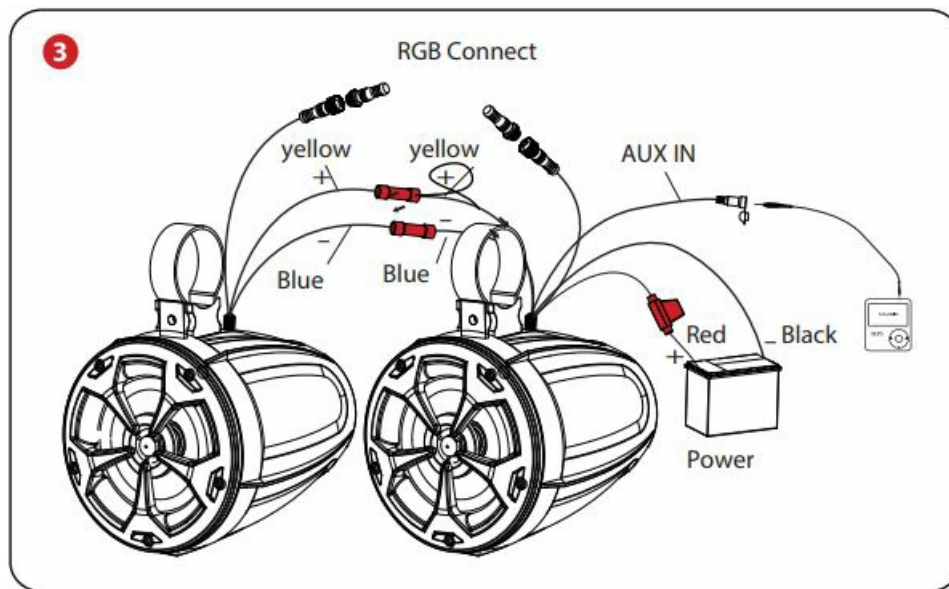
1. To avoid potential shorts in the electrical system, be sure to disconnect the (-) battery cable before installation. Use this unit with a 12-Volt battery and negative grounding only. Failure to do so may result in a fire or malfunction.
2. Speaker Mounting suggestion as below:



- Step 1: Unbolting the mounting bracket
- Step 2: Slide in the buckle with rubber pad attached to the bracket stand of the speaker Attach the set to handle bar of vehicle / ship
- Step 3/4: Attach screw to lock the buckle
- Step 5: Using accessories of Butt Connector to Connect Speaker wires (See Illustration 1) Step 6 : Using accessories of Butt Connector to Connect Power Cable (See Illustrations 2)

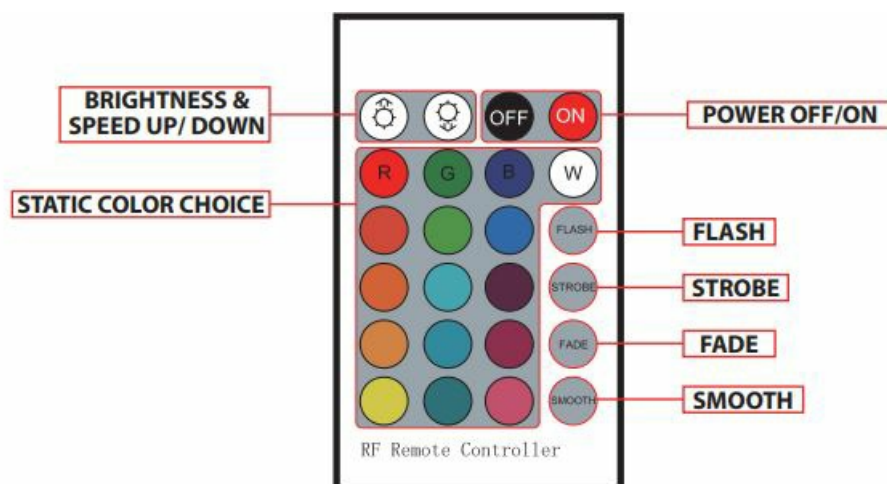


- Step 7: Connected two speakers by RGB connect wire, see the drawing in below (See Illustration 3)



Remote Control Functions

- 16 static colors for choice with 8 kind of brightness which can adjust up and down.
- 3 colors flash, 4 colors strobe, 7 colors fade, 7 colors smooth, all modes can adjust the brightness and speed.
- In static color mode, the brightness can adjust up and down.



Features

- Pro Audio PowerSport Speakers with RGB Lights
- Amplified (Active + Passive) Speaker System
- Wireless BT Music Streaming Ability
- Bridged Sound System: (2) x 4.0" Woofers + (2) x 0.5" Tweeters
- Marine Grade Waterproof Rated Construction
- Weatherproof & Water-Resistant Housing
- 2-Way Full Range Stereo Sound Reproduction
- Built-in Digital Sound Processing Amplifier
- Integrated Speaker Power & Wiring Harness
- Compact Size & High-Powered Output
- Impressive Bass Response

- Aux (3.5mm) Input Jack
- Connect & Stream Audio from External Devices
- Sleek Design, Machine Molded Speaker Cabinet Housing
- Rugged, Universal Mount Bracket Design for Roll-Bar / Roll-Cage
- Used for Off-Road Outdoor Vehicles: ATV, UTV, 4×4, Jeeps, Marine Watercraft

Wireless BT Connectivity

- Simple & Hassle-Free Pairing
- Instant Wireless Audio Streaming Ability
- Works with All of Today's Latest Devices (Smartphones, Tablets, Laptops, etc.)
- Wireless BT Version: V4.2
- Wireless BT Network Name: 'PYLEUSA'
- Wireless Range: 30+ ft.
- *Wireless BT Receiver Module Built-Into Amplifier of Main/Active Speaker

What's in the Box

- (1) 4" Amplified Main Speaker
- (1) 4" Passive Support Speaker
- Speaker Connection Wires, 6.6' ft.
- Wire Butt Connectors, 16-22 AWG
- (2) 5.9" x 0.7" x 0.2" -inches EVA Pads
- (2) 6.5" x 0.7" x 0.08" -inches EVA Pads
- RGB Connection Wire, 6.6' ft.
- Remote Control
- Warranty card
- Owner's Manual

Technical Specs

- Speaker Power: 800 Watt MAX
- Amp Power: 2 x 250 Watt MAX @ 4 Ohms (2 x 125 Watt RMS)
- Amp Type: 2-Channel, Class D
- Marine Grade Waterproof Rating: IP-X5
- Speaker Type: Polypropylene Cone, Butyl Rubber Surround (x2)
- Tweeter Type: Neodymium Dome (x2)
- Frequency Response: 85Hz-20kHz
- Impedance: 4 Ohm
- Magnet Type: 20 oz. Circuit
- Mid-Woofer Voice Coil Type: 1.0", Aluminum
- Sensitivity: 90 dB +/- 2 dB @ 1M/1W
- Anti-Thump Turn-On
- Soft Turn On/Off

- T.H.D: <0.05%
- S/N Ratio: >95dB
- Channel Separation: >65dB
- Amp Freq. Response: 10Hz- 30 kHz
- Fuse: 1 x 10A
- Power Supply: DC 12V
- Universal Mounting Brackets Roll-Bar / Roll-Cage Diameter: 1.25" ~ 2.0" -inches
- Remote Control Battery Operated Requires (1) x CR2025 Batteries (Included)
- Battery Type: 3.2V Lithium-ion 150mAh
- Speaker Dimensions: 5.6" x 8.4" x 7.3" -inches, with Bracket (Each)

This products can expose you to a chemical or group of checmicals, which may include "Di (2-ethylhexyl) phthalate (DEHP)" which is known in the state of California to cause cancer, birth defects, or other reproductive harm. For more info, go to <https://www.p65warnings.ca.gov/>.

Questions? Issues?

We are here to help!

- Phone: (1) 718-535-1800
- Email: support@pyleusa.com

FAQs

What is the total wattage of the Pyle PLUTV45BTR speakers?

The Pyle PLUTV45BTR features an 800W dual marine grade off-road speaker system.

How many speakers are included in the package?

The system includes (2) four-inch active & passive two-way off-road speakers.

Is the system compatible with all Bluetooth devices?

Yes, the Pro Audio PowerSport speakers are compatible with Bluetooth for wireless audio streaming and work with devices like iPhones, Android mobile phones, or iPads.

Where is the Bluetooth module located?

The Bluetooth module is built into the amplifier of the active speaker.

Is this system comprised of both active and passive speakers?

Yes, it features an active + passive system. The system powers (2) 0.5" neodymium dome tweeters, (2) 4"

polypropylene cones with butyl rubber surround, and a 1" aluminum mid-woofer voice coil for full-range sound reproduction.

Can these speakers withstand water and rough conditions?

Absolutely! The speakers have marine-grade IP-X5 waterproof construction, making them perfect for extreme water sports and other outdoor activities.

What kind of design does the speaker have?

The speakers showcase a sleek design and come housed in a durable machine-molded speaker cabinet.

Where can I mount these speakers?

These speakers are designed to be mounted on support bars, frames, roll-bars, or roll-cages. They are stored protectively in a heavy-duty molded cabinet with a butyl rubber surround.

Are the speakers suitable for use on all vehicles?

They are designed for boats, ATVs, UTVs, quads, Jeeps, and other off-road vehicles, ensuring versatile use across various terrains.

What type of speakers does the system include?

The system includes (2) four-inch passive two-way off-road speakers.

How much power does the Pyle off-road speaker system produce?

How much power does the Pyle off-road speaker system produce?

Are the speakers suitable for both water and land vehicles?

Yes, the dual marine-grade design makes it ideal for use on boats, as well as ATVs, UTVs, quads, Jeeps, and other outdoor vehicles.

Download this PDF Link: [Pyle PLUTV45BTR Bluetooth Speakers User Manual](#)