



PYLE PWMA1216BM Portable PA Speaker Amplifier and Microphone System User Manual

[Home](#) » [Pyle](#) » PYLE PWMA1216BM Portable PA Speaker Amplifier and Microphone System User Manual 

PYLE

PYLEUSA.COM



PWMAI216BM

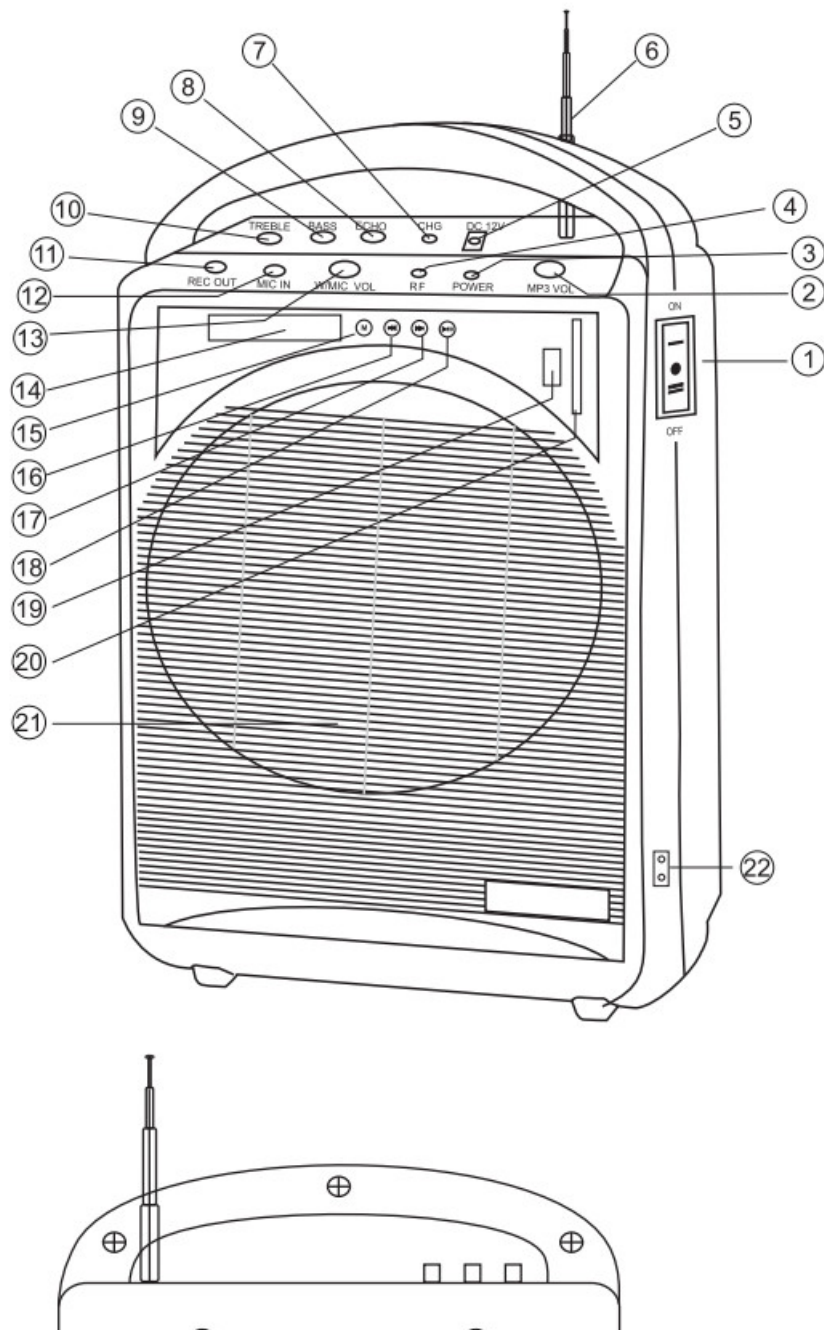
Portable PA Speaker Amplifier a Microphone System

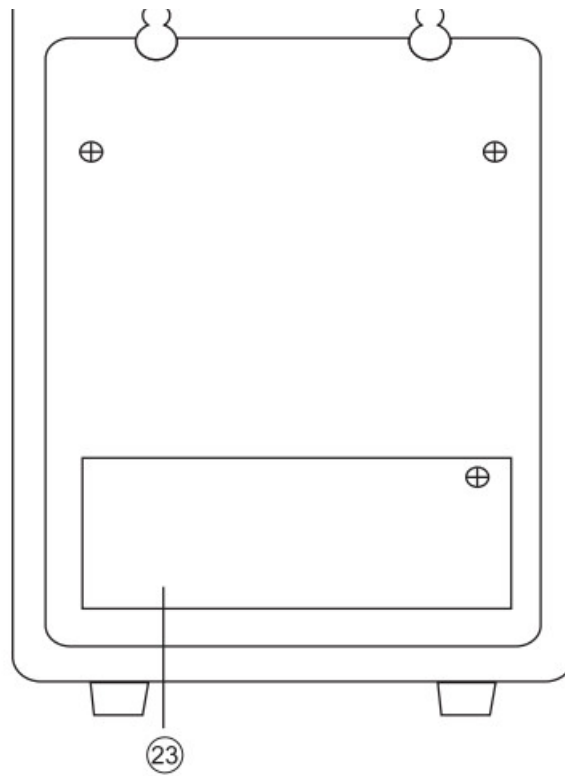
Bluetooth Wireless Streaming, Built-in Rechargeable Battery, Accessory Kit (Includes Handheld Mic, Headset Mic, Lavalier Mic, Belt Pack Transmitter)

Contents

- 1 PARTS DESCRIPTION
- 2 CONNECTION
- 3 BLUETOOTH/MP3 OPERATION
- 4 OPERATION OF WIRELESS MICROPHONE
- 5 BELT PACK TRANSMITTER OPERATION
- 6 FCC COMPLIANCE STATEMENT
- 7 Documents / Resources
- 8 Related Posts

PARTS DESCRIPTION





1. Power ON/OFF switch
2. MP3 volume control
3. Power ON LED indicator
4. RF ON LED indicator
5. External DC input jack
6. Wireless receiver antenna
7. Charge LED indicator
8. Echo level control
9. Bass level control
10. Treble level control
11. Record out jack
12. MIC Input jack
13. Wired/wireless MIC volume control
14. MP3 display
15. MP3 mode
16. MP3 previous/volume-
17. MP3 next/volume+
18. MP3 play/pause
19. USB port
20. SD/MMC card slot
21. Speaker
22. AC input jack
23. Battery compartment

AC POWER OPERATION

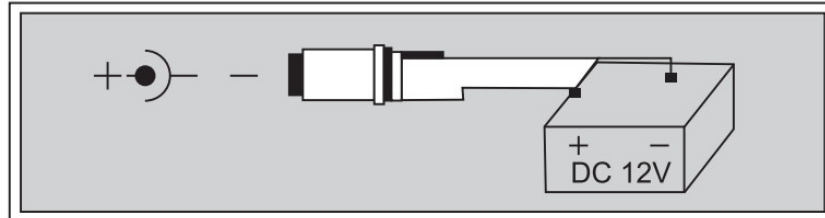
Plug one end of provided AC cord into the AC input jack on the right side of the amplifier. Then plug the other end of the AC cord into the AC power outlet. Turn on the unit using the power/volume switch.

NOTE:

To avoid damaging your unit, make sure AC power is the same as that marked near the AC input jack)

DC POWER OPERATION

This unit can be powered also using external 12V DC power. Connect external 12V DC power to the DC input jack on the top panel of the amplifier. Observe the correct polarity as follows.



RECHARGEABLE BATTERY OPERATION

This unit can be powered internally using the built-in rechargeable battery. When AC power is connected, if the battery charging indicator lights red, the rechargeable battery is not **fully** charged and **will** be allowed to charge while the unit is powered by the AC power. If the battery charging indicator lights green, the battery is fully charged and ready to power the unit alone. Shut off the power switch and disconnect the AC power. Turn the unit back on and the rechargeable battery **will** power the unit alone.

Note: Turning off the unit power switch will allow the battery to recharge more quickly.

ATTENTION:

1. If feedback (howling sound) occurs, try first turning down the treble control. If feedback still is present, try turning down the volume or repositioning this unit with respect to the wired or wireless microphone being used.
2. Extend the antenna **fully** whenever using the wireless microphone to ensure optimum performance and maximum range.

CONNECTION

The **REC OUT** socket can be connected to a recording device or to the input jack of a power amplifier to further amplify and enlarge the audio power.

The **MIC IN** socket can be connected to a wired dynamic MIC.

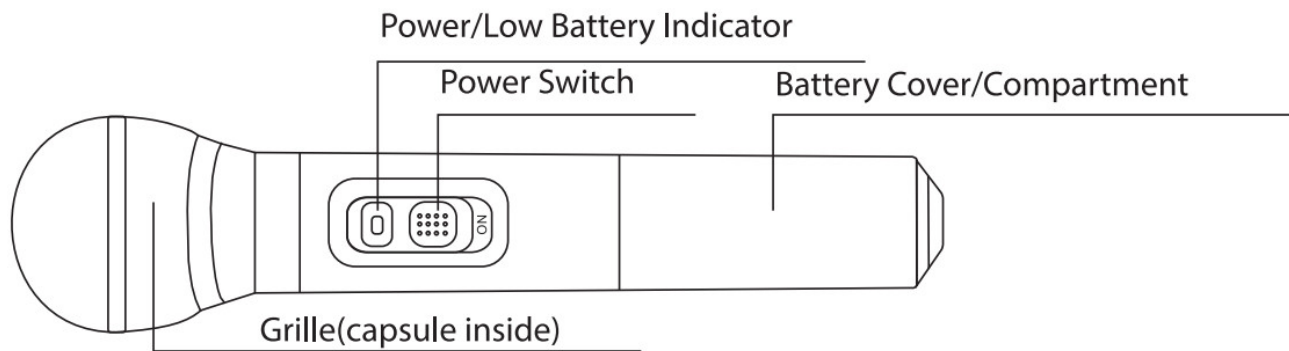
Keep MIC head away from the speaker of the main unit to avoid feedback.

BLUETOOTH/MP3 OPERATION

1. Insert the flash drive into a **USB** port or a **Micro SD Memory Card** into Micro SD Memory Card Slot, system **will** play the music in a flash drive or Micro SD Memory Card automatically. If both the flash drive and Micro SD Memory Card are inserted, the system **will** play the music in the flash drive. To play music in a Micro SD Memory Card press the **MODE** button to switch to SD mode.
2. To play music from your mobile phone etc via Bluetooth, press the **MODE** button to switch to BT mode. Turn on the Bluetooth function of your mobile phone and search for Pyle Audio and connect. Then you can play your

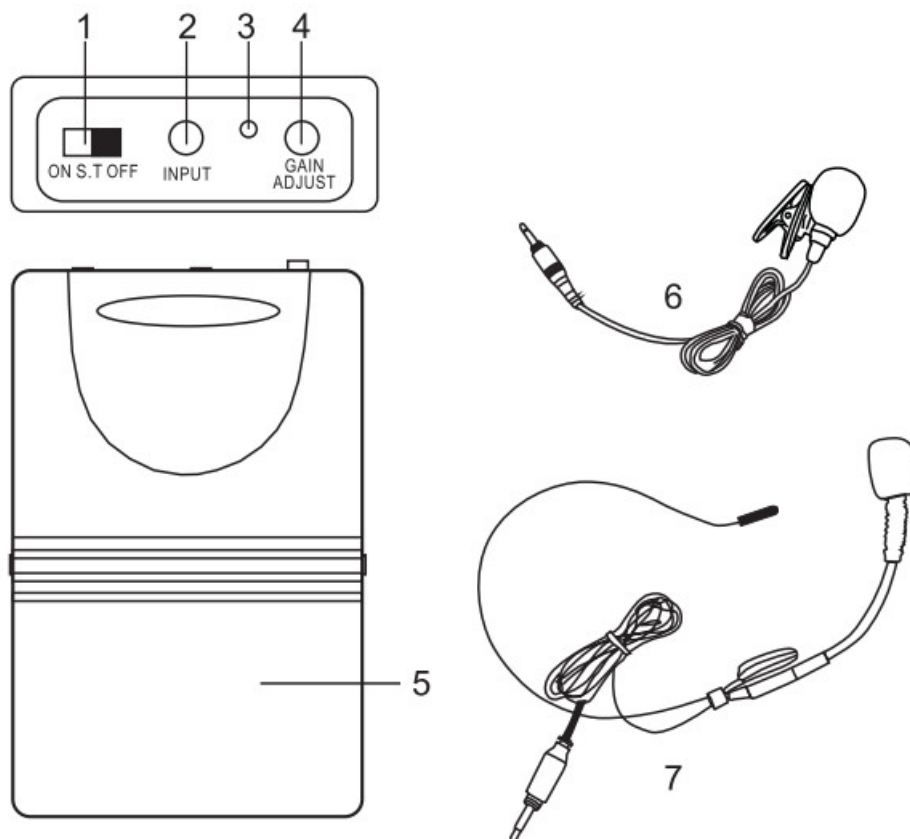
music on your mobile phone.

OPERATION OF WIRELESS MICROPHONE



1. Open the battery cover and install **2PCS AA batteries** into the battery compartment with the correct polarity. Then close the battery cover.
2. Slide the power switch to the “**ON**” position to turn on the microphone. The power indicator **will** flash once and then go off. This indicates correct
3. The **RF** indicator on the amplifier should now be lit.
4. Adjust the wireless MIC volume control of the amplifier to a comfortable listening level as desired.
5. Slide the power switch to the center “**MUTE**” position to mute the sound.
6. During operation, if the power indicator lights red, this indicates the battery is low. Please replace the new battery.
7. If the microphone is not going to be used for any length of time, slide the power switch to the **OFF** position and remove the battery.

BELT PACK TRANSMITTER OPERATION



1. Power On/Off/Mute switch
2. MIC input socket
3. Power/low battery Indicator
4. Gain adjustment
5. Battery compartment/cover
6. Lapel MIC
7. Headset MIC

- Open the battery cover and install **2PCS AA batteries** into the battery compartment with the correct polarity. And then close the cover.
 - Plug in either the clip-on or the headset microphone.
 - To use the clip-on MIC, attach it to chest level. Do not place too close to the mouth -a distance of about six inches usually works best. To use the headset MIC, place it on the head and adjust the MIC boom so that the MIC is about one inch to the side of the front of the mouth.
- Note:** The clip-on or headset MIC wire is also the transmitting antenna. Rolling up or shortening the wire may reduce the effective operating range. Extend the wire fully during use and keep it as straight as possible.
- Turn on the transmitter by sliding the power switch to the **ON** position. The power indicator will give a single quick flash, indicating usable battery strength. In the case of a dead or low battery, the power indicator either **will** not go on at **all** or will stay on continuously, indicating that the battery should be replaced with a fresh one.
 - The RF indicator on the amplifier should now be lit.
 - Adjust the volume control of the bodypack and/or volume control of the amplifier to a comfortable listening level as desired.
 - If the transmitter is not going to be used for any length of time, push the power switch to the OFF position and remove the battery.

PWMAI216BM

Portable PA Speaker Amplifier & Microphone System

Bluetooth Wireless Streaming, Built-in Rechargeable Battery, Accessory Kit (Includes Handheld Mic, Headset Mic, Lavalier Mic, Belt Pack Transmitter)

Features:

- Versatile Public Address Microphone & Speaker
- Bluetooth Wireless Music Streaming Ability
- USB Flash & SD Memory Card Readers
- MP3 Digital Audio File Compatibility
- Built-in Rechargeable Battery, 10+ Hour Operation
- 1/4" Microphone Input Jack
- Audio (3.5mm) Output, Connect External Speakers
- Full Range Stereo Sound Reproduction
- Includes Wireless VHF Handheld Microphone
- Echo, Bass, Treble Audio Configuration Controls
- Includes Power Cable & AA Batteries
- Ability to be Powered by an External Wall Power Adapter
- Perfect for Karaoke, Crowd Control, House Parties
- Lightweight, Portable & Powerful
- Impressive Bass Response
- Convenient Carry Handle

Bluetooth Connectivity:

- Wireless Music Streaming Audio
- Works with **All** of Your Favorite Devices
(Smartphone, Tablet, Computer, Laptop, MP3 Player, etc.)
- Bluetooth Version: 3.0
- Bluetooth Network Name: Pyle Audio
- Bluetooth Wireless Range: 30' ft.

What's in the Box:

- PA Speaker
- Wireless Handheld Microphone
- Beltpack Transmitter
- Headset Microphone
- Lavalier Clip-on Microphone
- Cigarette Lighter /Vehicle Outlet Power Cable
- (4) x 'AA' Batteries
- Wall Power Cable
- Travel / Storage Bag

Technical Specs:

- Battery Operated Mic/Beltpack: Require (2) x 'AA' Batteries (Each)
- MAX Power Output: 60 Watt
- Speaker Impedance: 4 Ohm
- Frequency Response: 25Hz-15kHz
- Maximum USB/SD Flash Memory Support: 32GB
- Digital Audio File Support: MP3
- Power DC 12V, AC 120V
- Dimensions (L x W x H): 7.2" x 4.3" x 11.6"

FCC COMPLIANCE STATEMENT

This device complies with Part 15 of the FCC Rules. Operation is subject to the following two conditions:

(1) this device may not cause harmful interference, and (2) this device must accept any interference received, including interference that may cause undesired operation.

NOTE: This equipment has been tested and found to comply with the limits for a Class B digital device, pursuant to part 15 of the FCC Rules. These limits are designed to provide reasonable protection against harmful interference in a residential installation. This equipment generates uses and can radiate radio frequency energy and, if not installed and used in accordance with the instructions, may cause harmful interference to radio communications. However, there is no guarantee that interference will not occur in a particular installation. If this equipment does cause harmful interference to radio or television reception, which can be determined by turning the equipment off and on, the user is encouraged to try to correct the interference by one or more of the following measures:

- Reorient or relocate the receiving antenna.
- Increase the separation between the equipment and receiver.
- Connect the equipment into an outlet on a circuit different from that to which the receiver is connected.
- Consult the dealer or an experienced radio/TV technician for help

Changes or modifications not expressly approved by the party responsible for compliance could void the user's authority to operate the equipment.


The logo for Pyle, featuring the word "PYLE" in a bold, red, sans-serif font. The letters are thick and blocky, with a slight shadow effect.

PyleUSA.com



VISIT US ONLINE
Have a question?
Need service or repair?
Want to leave a comment?
[PyleUSA.com/ContactUs](https://www.pyleusa.com/ContactUs)

Documents / Resources

	<p>PYLE PWMA1216BM Portable PA Speaker Amplifier and Microphone System [pdf] User Manual</p> <p>PWMA1216BM, ZRIPWMA1216BM, PWMA1216BM Portable PA Speaker Amplifier and Microphone System, Portable PA Speaker Amplifier and Microphone System</p>
---	--

[Manuals+.](#)