



# **PYLE PPHP1044B Portable Bluetooth PA Speaker System User Manual**

[Home](#) » [Pyle](#) » PYLE PPHP1044B Portable Bluetooth PA Speaker System User Manual 











**PPHP1044B  
Wireless BT Streaming PA Speaker System  
Portable Indoor/Outdoor Loudspeaker with  
Rechargeable Battery, Flashing Party Lights,  
MP3/USB/Micro SD Readers, FM Radio  
(10" Subwoofer, 600 Watt)  
User Manual**

**PPHP1044B Portable Bluetooth PA Speaker System**



**WARNING**

	1. DO NOT place objects on top of the device, as objects may scratch the device.
	2. DO NOT expose the device to dirty or dusty environments.
	3. DO NOT insert any foreign objects into the device.
	4. DO NOT expose the device to strong magnetic or electrical field.
	5. DO NOT use the device in the rain
	6. Please check with your Local Authority or retailer for proper disposal of electronic products.
	7. DO NOT disassemble the device. Only a certified service technician should perform repair.
	8. The device has apertures to disperse heat. DO NOT block the device ventilation, the device may become hot and malfunction as a result.

Illegal operation may cause personal injury, which could be fatal and may cause damage to property.

## FEATURES

This system can be used with personal computers, mobile phone, DVD, VCD, CD, LD, TV, MP3, radio, electronic piano and any devices which have audio output. Amplifier circuit are using high-performance, high-fidelity design, coupled with high-quality professional speaker, in order to make the sound field to get positioned so clear, distinct levels effect. The sound system is outstanding, with deep and powerful bass and the treble effect is strong, with clear and bright pitch. The professional electronic frequency division circuit enhances the machine's crossover point effect.

Using professional design and manufacture of high-capacity batteries, and dedicated audio power capacitors, to make the speaker's power reserve margin larger, more stable, better dynamics, higher signal to noise ratio.

## BUILT-IN BT FUNCTION

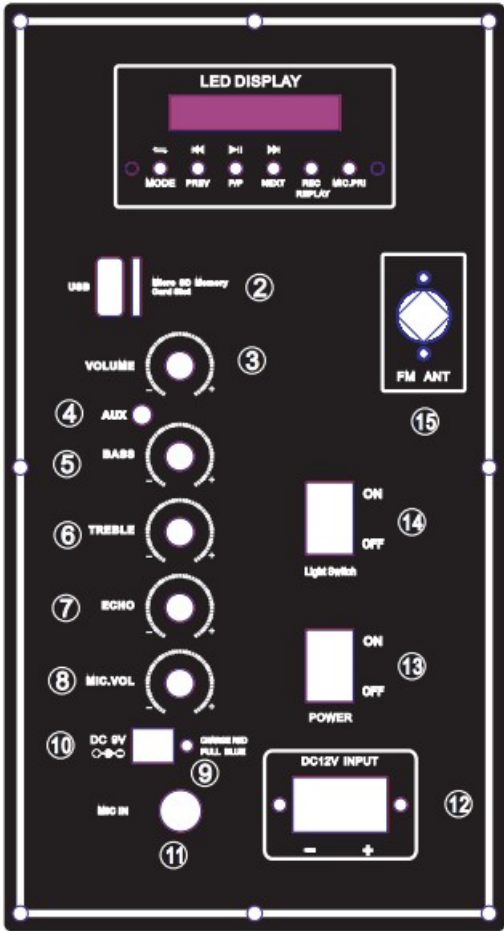
Press "STANDBY/INPUT" button to choose the input signal source as BT channel when starting the machine. Please ensure the BT devices you want to connect is open. Then scan and connect the speaker with the device. When the connection is successful, "tick" tone will prompt. If the speaker can't be connected, please restart the speaker or the device and try again. After the mobile phone and the BT are successfully connected, you can play music. To ensure continuous stability of the music signal, try to keep the BT and the mobile phone facing one another.

This unit supports iPad, iPhone, Samsung, HTC, MOTOROLA, Nokia and other BT mobile devices wirelessly transmitting audio. It supports stereo playing of A2DP.

The BT of the unit can be used up to 10 meters if there are no barriers.

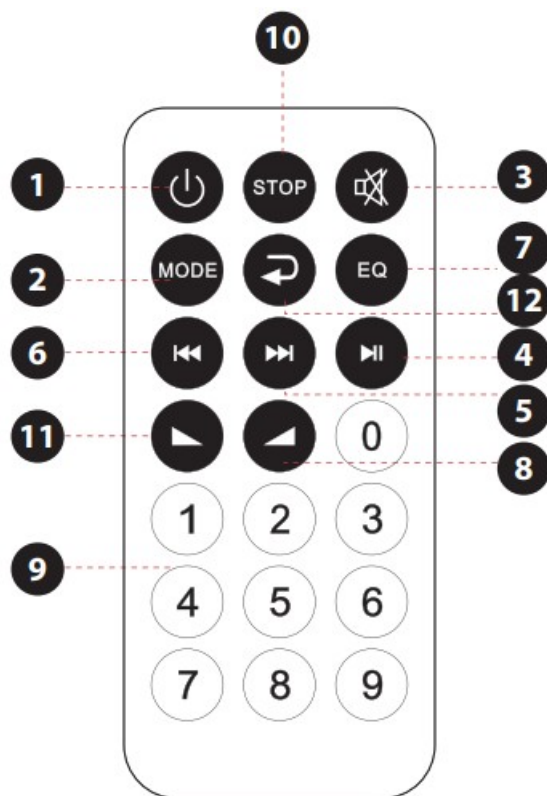
## BACK PANEL FUNCTIONS

<p>1. USB Control board</p> <p>2. USB and Micro SD Memory Card Slot</p> <p>3. Master volume control knob</p> <p>4. 3.5MM AUX input jack</p> <p>5. Bass volume control knob</p>	<p>6. Trek</p> <p>7. Ect</p> <p>8. Microp</p> <p>9. Charge LED indicator, red col</p> <p>10</p>
	<p>11. 6.5MM microphone input jack</p> <p>12. Extra DC 12V input</p> <p>13. Power switch</p> <p>14. LED light switch</p> <p>15. FM antenna</p>



REMOTE CONTROL FUNCTIONS

<p>1. Standby button</p> <p>2. Choose input AUX/FM/BT/USB signal</p> <p>3. Mute button</p> <p>4. Play/Stop button on MP3 mode, scan function on FM mode.</p> <p>5. Next song on USB/Micro SD card, next channel on FM mode.</p> <p>6. Previous song on USB/Micro SD card, last channel on FM mode</p>	<p>7. EQ effect on MP3 mode</p> <p>8. Increase speaker volume</p> <p>9. Choose song number directly</p> <p>10. Stop button</p> <p>11. Decrease music volume</p> <p>12. Repeat song on USB/Micro :</p>
---	---



## TROUBLESHOOTING

Fault	Possible Cause	Solution
No sound	1. No input sound source. 2. Volume is too low.	1. Use a better music signal. 2. Adjust volume.
Distortion of sound	1. Volume too high. 2. Speaker may be damaged	1. Turn down the volume. 2. If speaker is damaged, repair or replace it.
Karaoke does not work	1. Microphone plug is not fully inserted. 2. Microphone switch is not on. 3. Microphone volume knob is at the lowest position.	1. Plug microphone properly into the socket. 2. Turn on microphone switch. 3. Adjust microphone volume properly.
MP3 does not play	1. The audio format in the U disc is incorrect. 2. Improper operation has caused a process disorder. 3. USB disc is disconnected.	1. Convert audio format into Mp3 format. 2. Reboot the machine. 3. Insert USB disc properly.

### PPHP1044B

#### Wireless BT Streaming PA Speaker System

Portable Indoor/Outdoor Loudspeaker with Rechargeable Battery, Flashing Party Lights, MP3/USB/Micro SD Readers, FM Radio (10" Subwoofer, 600 Watt)

#### Features:

- High-Powered PA Speaker
- Indoor/Outdoor Loudspeaker System
- Wireless BT Music Streaming Ability

- Multi-Color LED Flashing DJ Party Lights
- Built-in Rechargeable Battery
- FM Radio with Digital Display
- Audio Recording Function
- Microphone Priority 'Talk-Over' Button
- Rugged & Durable Housing Construction
- Connect & Stream Audio from External Devices
- USB Flash & Micro SD Memory Card Readers
- MP3 Digital Audio File Support
- Aux (3.5mm) Input
- 1/4" -inch Microphone Input
- Rear Panel Button Control Center
- Mic Volume, Treble, Bass, Echo Adjustment
- Full Range Stereo Sound Reproduction
- Vented Enclosure Design for Extended Bass
- Telescoping Handle & Rolling Caster Wheels
- \*Optional Power via DC 12V Input
- Used for Backyard Home Karaoke, Stage Performances, Crowd Control

#### **What's in the Box:**

- PA Speaker System
- Remote Control
- Power Adapter

#### **Wireless BT Streaming:**

- Built-in BT for Wireless Music Streaming
- Simple & Hassle-Free Pairing
- Works with All of Today's Latest Devices (Smartphones, Tablets, Laptops, Computers, etc.)
- Wireless BT Version: 5.0
- Wireless BT Network Name: 'PYLEUSA'
- Wireless Range: Up to 32' ft.

#### **Technical Specs:**

- Power Output: 600 Watt MAX
- PA Speaker Type: Molded Cabinet Loudspeaker
- Sound System: 10" Subwoofer + 1" Tweeter
- Impedance: 4 Ohm
- Frequency Response: 55-20kHz
- S/N Ratio: 60dB +/-3dB
- SPL: 94dB (1W/M)
- T.H.D.: <1%

- USB Interface Type: 2.0
- Digital Media File Compatibility: MP3
- Maximum USB Flash Drive Support: Up to 32GB
- LED Lights Switch, Power ON/OFF
- PA Speaker Rechargeable Battery 7.4V Li-ion, 2200mAh – 16.2Wh
- Battery Powered Remote, Requires (1) x 'CR-2025', Included
- Power Supply: 120/240V (9V Power Adapter)
- Total Speaker Size (L x W x H): 11.8" x 9.6" x 17.7" -inches

### Questions? Issues?

We are here to help!

Phone: (1) 718-535-1800

Email: [support@pyleusa.com](mailto:support@pyleusa.com)



**WARNING:** This product can expose you to a chemical or group of chemicals, which may include "Lead and lead compounds" which is known in the state of California to cause cancer, birth defects, or other reproductive harm. For more info, go to <https://www.p65warnings.ca.gov/>.

[www.PyleUSA.com](http://www.PyleUSA.com)

**PYLE**

PyleUSA.com



### VISIT US ONLINE:

Have a question?

Need service or repair?

Want to leave a comment?

[PyleUSA.com/ContactUs](http://PyleUSA.com/ContactUs)

## Documents / Resources



[PYLE PPHP1044B Portable Bluetooth PA Speaker System](#) [pdf] User Manual  
PPHP1044B, PPHP1044B, PPHP1044B Portable Bluetooth PA Speaker System, Portable Bluetooth PA Speaker System, Bluetooth PA Speaker System, PA Speaker System, Speaker System

## References

- [P Pyle USA Electronics | Home Audio | Car Audio & More](#)
- [p65warnings.ca.gov/](https://www.p65warnings.ca.gov/)
- [User Manual](#)

