

**PYLE**  
**PL650CBL**  
**Two Way**  
**Component**  
**Speaker**  
**Systems**



# PYLE PL650CBL Two Way Component Speaker Systems User Guide

[Home](#) » [Pyle](#) » PYLE PL650CBL Two Way Component Speaker Systems User Guide 

## Contents

- [1 PYLE PL650CBL Two Way Component Speaker Systems](#)
- [2 Product Information](#)
- [3 Product Usage Instructions](#)
- [4 Wiring Instruction](#)
- [5 Installation Instructions](#)
- [6 Frequently Asked Questions](#)
- [7 Documents / Resources](#)
  - [7.1 References](#)

**PYLE**

## PYLE PL650CBL Two Way Component Speaker Systems



## Product Information

## Specifications:

- **Model:** PL650CBL
- **Type:** Two-Way Component Speaker Systems
- **Quantity:** One Pair
- **Size:** 6.5"
- **Power Handling:** 360 Watts
- **Impedance:** 4 Ohms
- **Voice Coil:** 1" High-Temperature ASV

## Product Usage Instructions

### Installation Instructions:

To install the tweeters, follow one of the two methods below:

1. (A) Flush Mount:
  1. Prepare the mounting area for a flush installation.
  2. Secure the tweeters in place using the provided hardware.
2. (B) Surface Mount:
  1. Prepare the mounting area for a surface installation.
  2. Secure the tweeters in place using the provided hardware.

### Warnings:

This product contains chemicals, including Di (2-ethylhexyl) phthalate (DEHP), known to the State of California to cause cancer, birth defects, or other reproductive harm. For more information, visit

<https://www.p65warnings.ca.gov/>.

### Contact Information:

For questions or assistance, contact us at Phone: 1.718.535.1800 or visit our website at

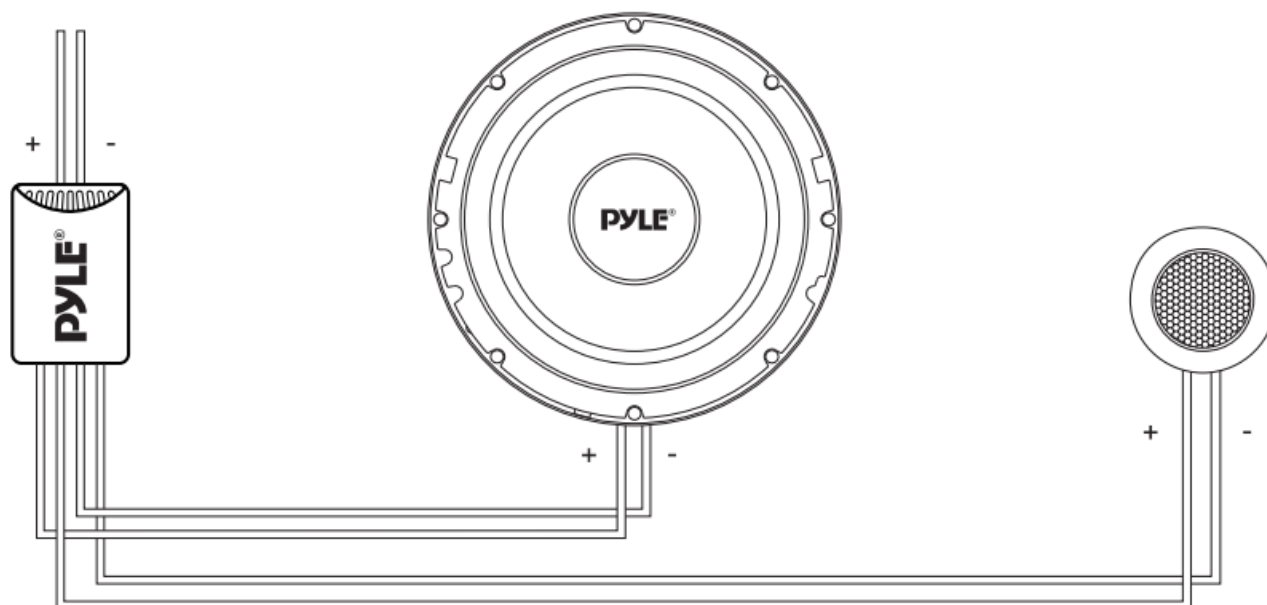
[PyleUSA.com/ContactUs](https://PyleUSA.com/ContactUs).

### PL650CBL

Two-Way Component Speaker Systems

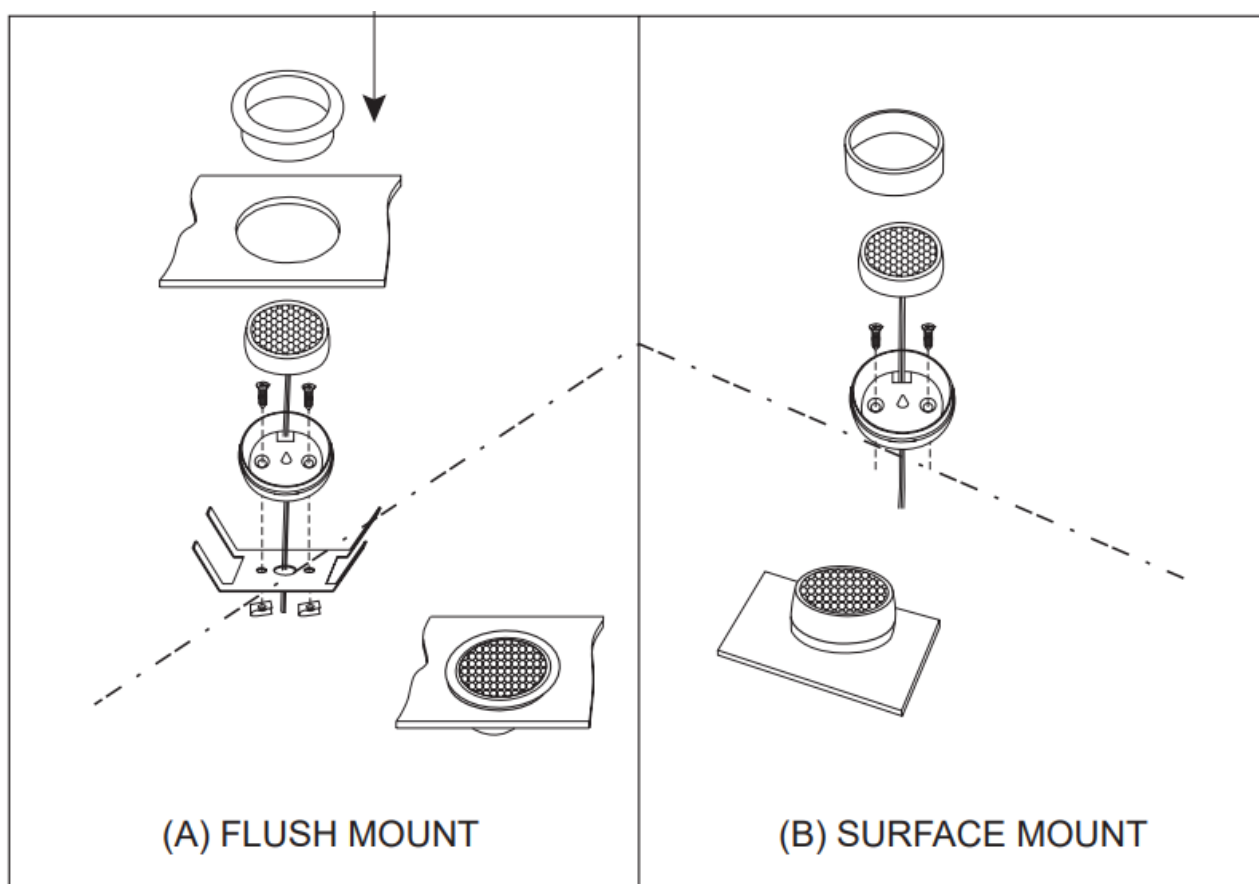
One Pair 6.5" Two-Way Component Kit, 360 Watts w/4 Ohm Impedance and 1" High-Temperature ASV Voice Coil (Pair)

## Wiring Instruction

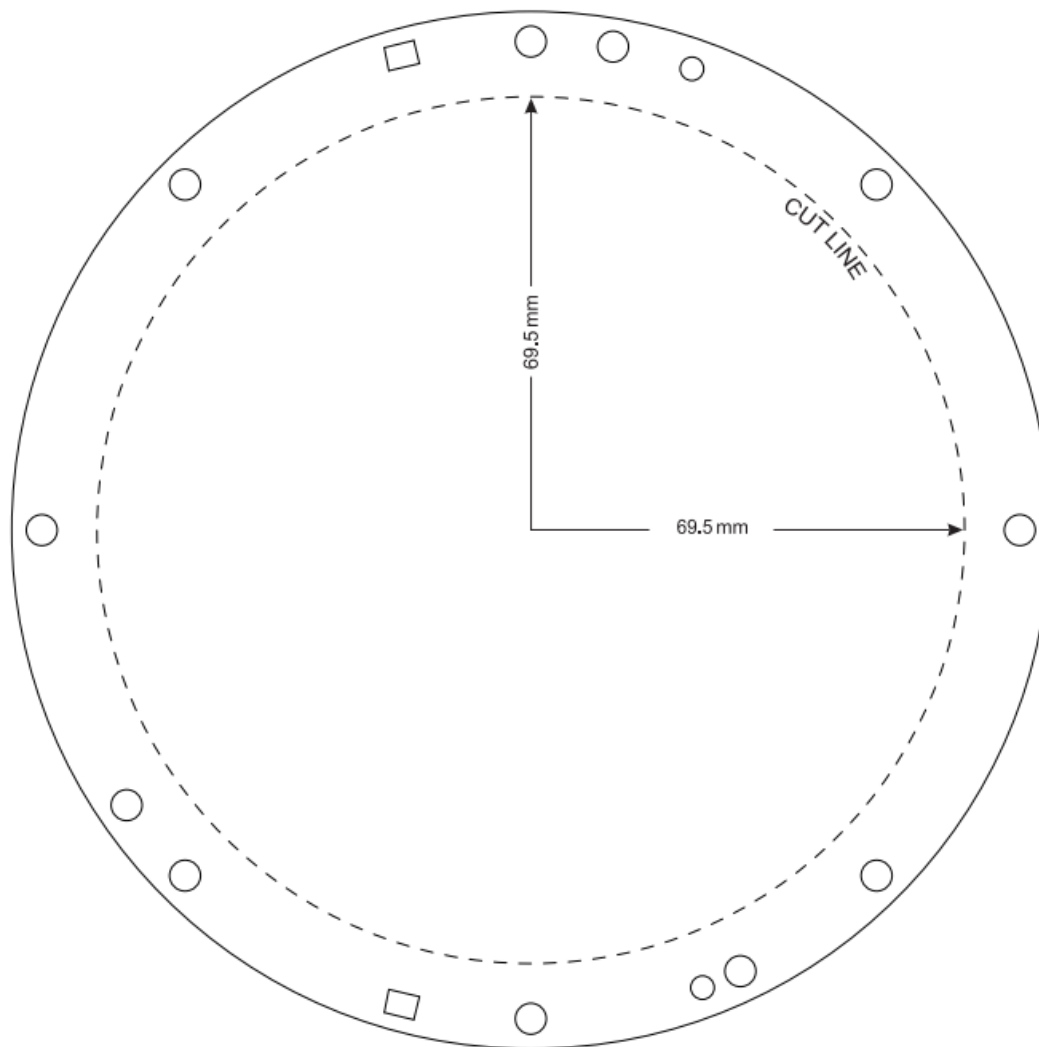


## Installation Instructions

Tweeters can be installed in one of two ways, flush, surface mount with included hardware.



**TEMPLATE**  
FOR 6.5 INCHES/ 16.5 CM SPEAKER



### CAUTION

This product can expose you to a chemical or group of chemicals, which may include "Di (2-ethylhexyl) phthalate (DEHP)" which is known in the state of California to cause cancer, birth defects or other reproductive harm. For more info, go to <https://www.p65warnings.ca.gov/>.

Questions or Comments? We are here to help! Phone: 1.718.535.1800

[PyleUSA.com/ContactUs](https://PyleUSA.com/ContactUs)



[PyleUSA.com](https://PyleUSA.com)

### Frequently Asked Questions

**Q: How do I determine which mounting method to use for the tweeters?**

**A:** Choose between flush mount and surface mount based on your vehicle's interior design and your personal preference. Refer to the installation instructions for detailed steps.

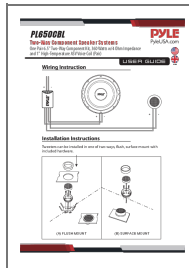
**Q: Are the tweeters included in the package?**

**A:** Yes, the package includes a pair of tweeters along with all necessary hardware for installation.

**Q: What is the power handling capacity of the speakers?**

**A:** The speakers have a power handling capacity of 360 Watts.

## Documents / Resources



[PYLE PL650CBL Two Way Component Speaker Systems](#) [pdf] User Guide  
PL650CBL, PL650CBL Two Way Component Speaker Systems, Two Way Component Speaker Systems, Component Speaker Systems, Speaker Systems

## References

- [P65warnings.ca.gov](#)
- [User Manual](#)

[Manuals+](#), [Privacy Policy](#)

This website is an independent publication and is neither affiliated with nor endorsed by any of the trademark owners. The "Bluetooth®" word mark and logos are registered trademarks owned by Bluetooth SIG, Inc. The "Wi-Fi®" word mark and logos are registered trademarks owned by the Wi-Fi Alliance. Any use of these marks on this website does not imply any affiliation with or endorsement.