



PYLE PHPWA8TB Wireless BT Portable PA Speaker User Guide

[Home](#) » [Pyle](#) » PYLE PHPWA8TB Wireless BT Portable PA Speaker User Guide



PYLE PHPWA8TB Wireless BT Portable PA Speaker



WARNING

1. DO NOT place objects on top of the device, as objects may scratch the device.
2. DO NOT expose the device to dirty or dusty environments.

3. DO NOT insert any foreign objects into the device.
4. DO NOT expose the device to strong magnetic or electrical field.



5. DO NOT use the device in the rain
6. Please check with your Local Authority or retailer for proper disposal of electronic products.
7. DO NOT disassemble the device. Only a certified service technician should perform repair.
8. The device has apertures to disperse heat. DO NOT block the device ventilation, the device may become hot and malfunction as a result.



FEATURES

This system can be used with personal computers, mobile phone, DVD, VCD, CD, LD, TV, MP3, radio, electronic piano and any devices which have audio output. Amplifier circuit are using high-performance, high-fidelity design, coupled with high-quality professional speaker, in order to make the sound field to get positioned so clear, distinct levels effect. The sound system is outstanding, with deep and powerful bass and the treble effect is strong, with clear and bright pitch. The professional electronic frequency division circuit enhances the machine's crossover point effect. Using professional design and manufacture of high-capacity batteries, and dedicated audio power capacitors, to make the speaker's power reserve margin larger, more stable, better dynamics, higher signal to noise ratio.

Wireless BT Connectivity:

- Built-in BT for Wireless Music Streaming
- Simple & Hassle-Free Pairing
- Works with All of Today's Latest Devices, Smartphones, Tablets, Laptops, Computers, etc.
- Wireless BT Version: 5.0
- Wireless BT Network Name: 'PYLEUSA'
- Wireless Range: Up to 32' ft.

REMOTE CONTROL FUNCTIONS

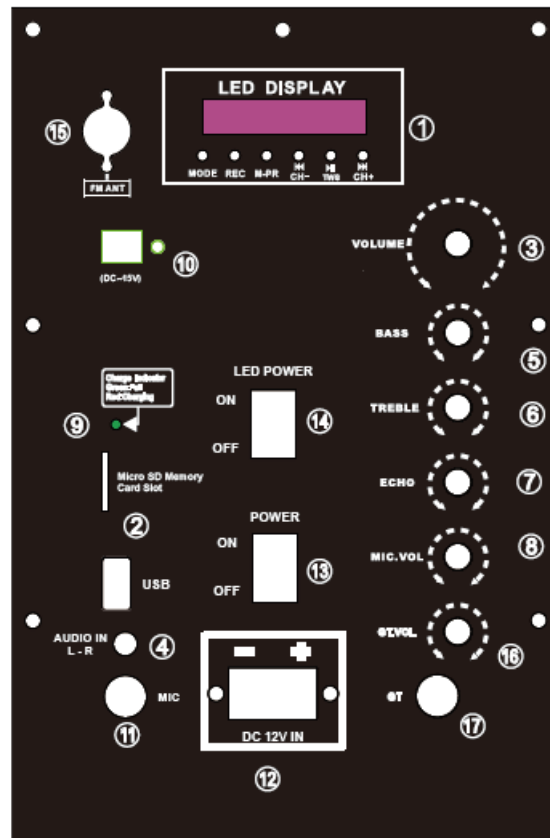
1. Standby button
2. Choose input AUX/FM/BT/USB signal
3. Mute button
4. Play/Stop button on MP3 mode,
5. an function on FM mode
6. Next song of USB/MicroSD, next channel of FM mode
7. Previous song of USB/MicroSD, last channel of FM mode
8. EQ effect on MP3 mode
9. Decrease music volume
10. Choose song number directly on MP3 mode
11. . Stop button
12. . Increase speaker volume
13. Repeat song on USB/MicroSD mode



BACK PANEL FUNCTIONS

1. USB Control board
2. USB and micro SD input jack
3. Master volume control knob
4. 3.5MM AUX input jack
5. Bass volume control knob
6. Treble volume control knob

7. Echo volume control knob
8. Microphone volume control knob Charge LED indicator, red color is on charge mode, green color is full charge
9. . DC 15V input jack
10. 6.5MM microphone input jack
11. Extra DC 12V input
12. Power switch
13. LED light switch
14. FM antenna
15. Guitar volume control
16. 6.5MM guitar input jack



RECORDING FUNCTION

1. In USB or Micro SD mode, short press REC button to start recording, and short press again to complete recording.
2. In USB or Micro SD mode, press and hold MODE button to play recording. While playing current recording, press and hold REC button to delete current recording. press and hold mode button again to quit recording.

BUILT-IN WIRELESS BT FUNCTION

- Press “STANDBY/INPUT” button to choose the input signal source as BT channel when starting the machine.
- Please ensure the BT devices you want to connect is open. Then scan and connect the speaker with the device. When the connection is successful, “tick” tone will prompt. If the speaker can’t be connected, please restart the speaker or the device and try again.
- After the mobile phone and the BT are successfully connected, you can play music. To ensure continuous

stability of the music signal, try to keep the BT and the mobile phone facing one another.

- This unit supports iPad, iPhone, Samsung, HTC, MOTOROLA, Nokia and other BT mobile devices wirelessly transmitting audio. It supports stereo playing of A2DP.



TWS CONNECTIVITY

1. Turn ON both speakers and set to BT mode
2. Choose speaker & press and hold the " " button for 3 seconds, display will show "T-ON", then two speakers will connect automatically.
3. If you want to turn off TWS function, you just need to press and hold the " " button for 3 seconds, display will show "T-OFF", then two speakers will be TWS off.

TROUBLESHOOTING

Fault	Possible Cause	Solution
No sound	<ol style="list-style-type: none"> 1. No input sound source. 2. Volume is too low. 	<ol style="list-style-type: none"> 1. Use a better music signal. 2. Adjust volume.
Distortion of sound	<ol style="list-style-type: none"> 1. Volume too high. 2. Speaker may be damaged 	<ol style="list-style-type: none"> 1. Turn down the volume. 2. If speaker is damaged, repair or replace it.
Karaoke does not work	<ol style="list-style-type: none"> 1. Microphone plug is not fully inserted. 2. Microphone switch is not on. 3. Microphone volume knob is at the lowest position. 	<ol style="list-style-type: none"> 1. Plug microphone properly into the socket. 2. Turn on microphone switch. 3. Adjust microphone volume properly.
MP3 does not play	<ol style="list-style-type: none"> 1. The audio format in the USB is incorrect. 2. Improper operation has caused a process disorder. 3. USB disc is disconnected. 	<ol style="list-style-type: none"> 1. Convert audio format into Mp3 format. 2. Reboot the machine. 3. Insert USB disc properly.

Documents / Resources

	PYLE PHPWA8TB Wireless BT Portable PA Speaker [pdf] User Guide PHPWA8TB, PHPWA10TB, PHPWA12TB, PHPWA15TB, Wireless BT Portable PA Speaker, Portable PA Karaoke Party Audio Speaker, Two Wireless Microphone Wired Microphone
	PYLE PHPWA8TB Wireless BT Portable PA Speaker [pdf] User Guide PHPWA8TB, PHPWA10TB, PHPWA12TB, PHPWA15TB, PHPWA8TB Wireless BT Portable PA Speaker, PHPWA8TB, Wireless BT Portable PA Speaker

References

