



# PYLE PGMSP100 Portable Wireless BT Streaming Gramophone Speaker User Guide

[Home](#) » [Pyle](#) » PYLE PGMSP100 Portable Wireless BT Streaming Gramophone Speaker User Guide 

## Contents

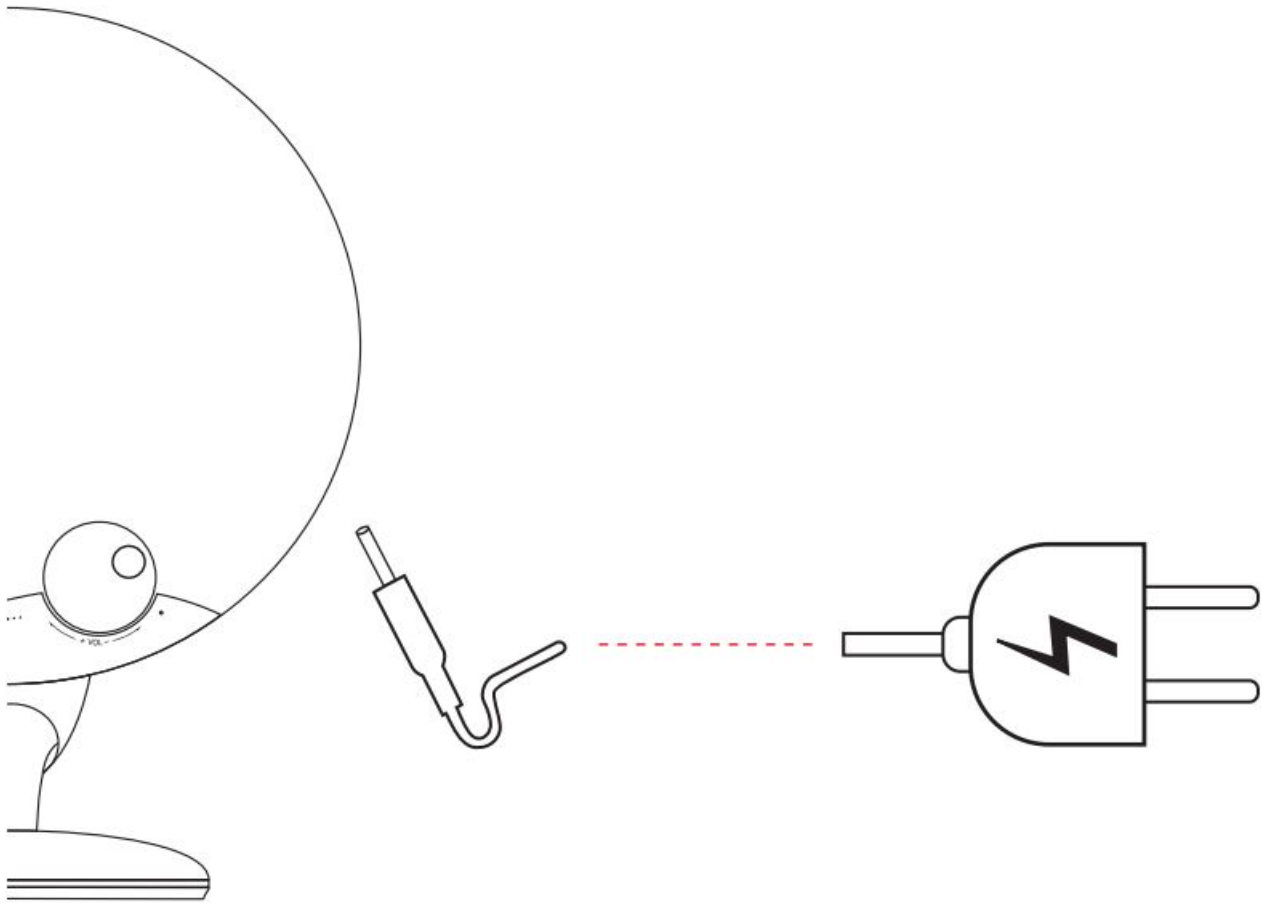
- [1 PYLE PGMSP100 Portable Wireless BT Streaming Gramophone Speaker](#)
- [2 Connect to the DC Power](#)
- [3 Wireless BT Connection](#)
- [4 AUX Connection](#)
  - [4.1 Basic Operation](#)
- [5 LED Operation](#)
- [6 How to operate TWS pairing function](#)
- [7 Features](#)
  - [7.1 Technical Specs:](#)
- [8 FREQUENTLY ASKED QUESTIONS](#)
- [9 Important Safety Instructions](#)
- [10 FCC Warning](#)
- [11 Documents / Resources](#)
- [12 Related Posts](#)



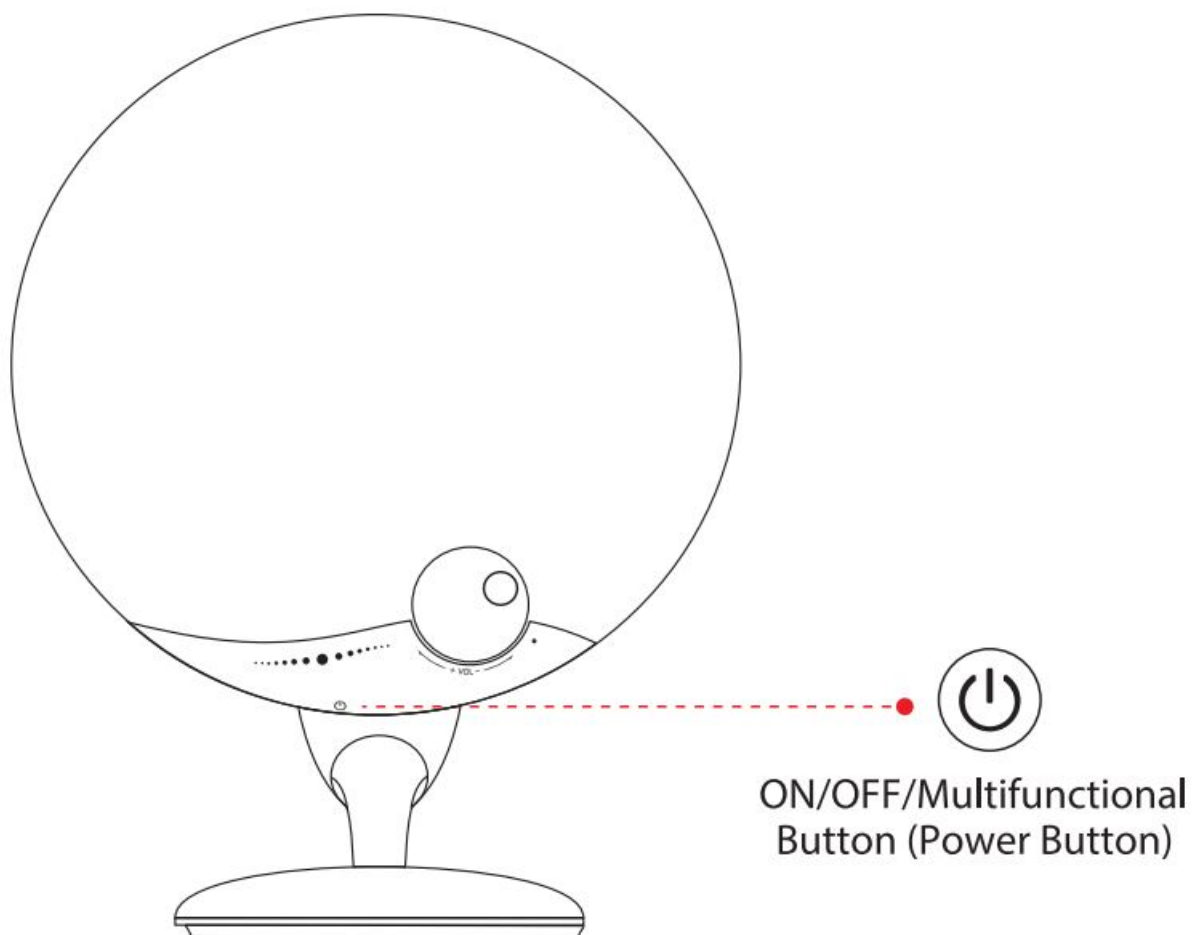
**PYLE PGMSP100 Portable Wireless BT Streaming Gramophone Speaker**



**Connect to the DC Power**

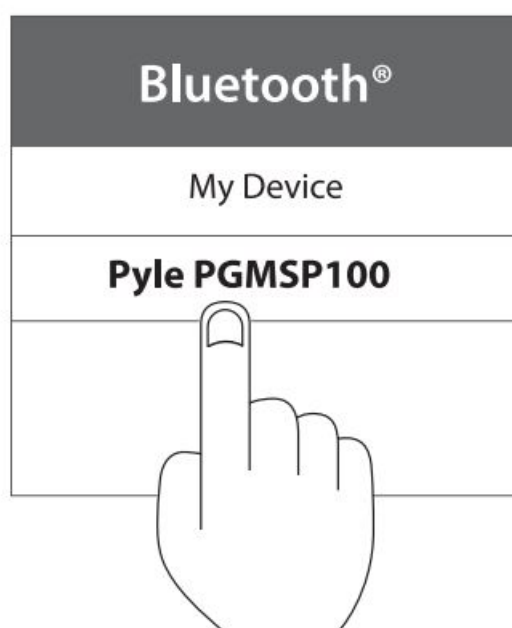


**Wireless BT Connection**



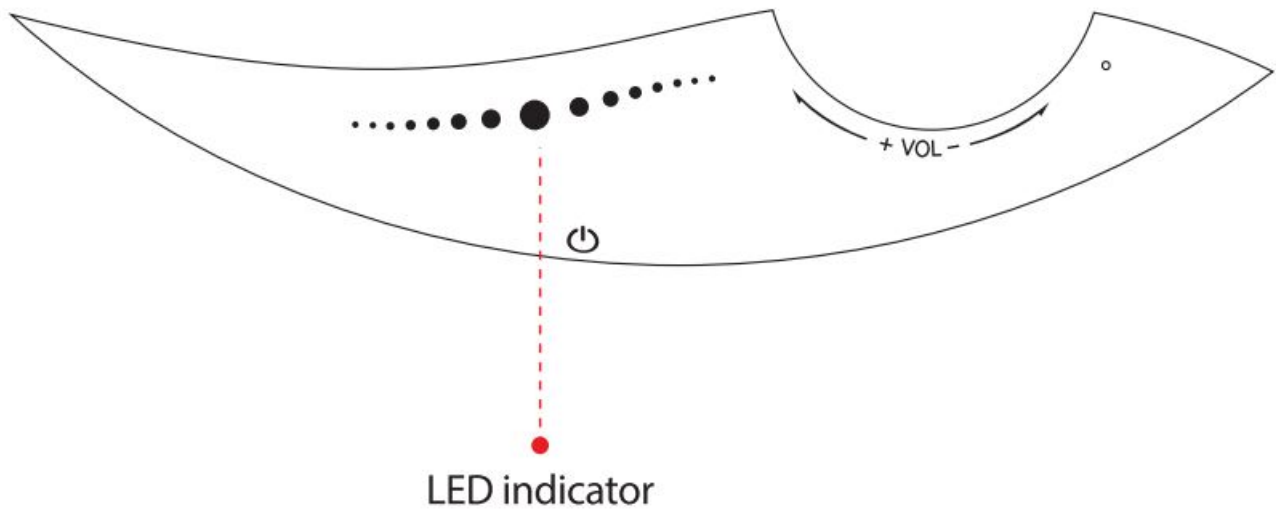
### Power ON

Press and hold 3 seconds to power ON. The speaker enters into BT searching status and the blue indicator starts blinking.



### Choose the Device

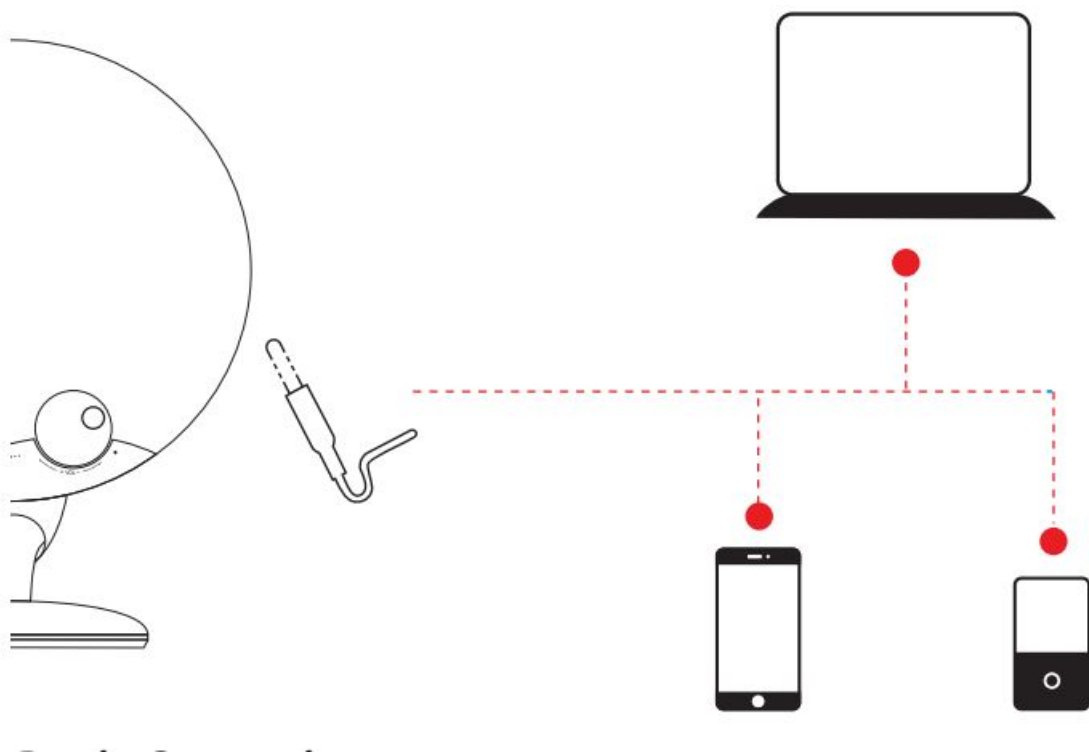
Find the Pyle PGMSP100 from the BT name list on your phone.



### Pairing Successful

The indicator light will stay blue once the pairing is done, then you can play music.

### AUX Connection



### Basic Operation

- ON/OFF/Multifunctional Button (Power Button)
- Power ON: Press and hold for 3 seconds.
- Quick press the button twice to disconnect the current pairing and the speaker goes into searching mode again.
- Touch and Slide Key

- Short touch it to play/pause; when a call comes in or during the call, short touch it to answer the call or hang up;
- Slide to the right to reject a call once a call comes in;
- Slide from the right to the left – previous track
- Slide from the left to the right- next track.
- **Rotation Key**
- Rotate it Clockwise to volume up;
- Rotate it Counterclockwise to volume down.

## LED Operation

- **Power ON:** The default is BT mode – Blue LED flashes quickly (in searching status). When a 3.5mm AUX cable is inserted, it goes into AUX mode automatically, the green LED stays ON.
- **Wireless BT**
- Blue LED stays ON in normal status.
- When it goes out of BT distance, it goes into searching mode and the blue LED flashes quickly. It will shut down automatically after 30 minutes without pairing.
- Searching to pair: Blue LED flashes quickly
- Slide from the right to the left: The left blue LED blinks once.
- Slide from the left to the right: The right blue LED blinks once.

## How to operate TWS pairing function

- **TWS Pairing**
- Turn ON two devices, short press respectively and hear the TW5 prompt sound, both of them will automatically connect. They will connect automatically if they connected before. The master device's blue LED indicator flashes after successful pairing. another device's LED indicator wil stay ON with successfully connected prompt sound, last stepis searching and pairing BT then enjoy your music
- **Disconnect TWS Pairing**
- Short press and disconnect TW'S pairing mode, blue LED indicator quickly flashes with prompt sound. Under TWS pairing status: Short press any device, it will disconnect TWS pairing and enter standalone mode.
- **Attention**
- BT pairing should be connected after successful TWS pairing.
- **What's in the Box**
- Wireless BT Streaming Gramophone Speaker

## Features

- Symphonic and Powerful Sound
- Bult-n Subwoofer
- Unique Gramophone Speaker
- Bulletin Rechargeable Battery
- Wirelessly Stream Music via Ary BT-enabled Device
- Elegant Touch Screen Control Panel for Music Selection

- Rotary Volume Control Circle
- Built-in Microphone for Hands-Free Phone Calls
- Enabled for “Twin Pairing”
- Easily Connect Two Gramophone Speakers Together

#### Technical Specs:

- Sound Systems 3.07" Subwoofers+185 Mid-Range Speakers x2
- Frequency Response: 70Hz-18KHz
- Si/N Ratio: 27SdB
- Input Sensitivity: 300mV
- Housing Construction Material ABS+Fabric
- AUX Cable Length: (65cm 2.13t0
- Power Supply: 120/240V (18V/2A Power Adapter?)
- Dimensions (LxWxH: 10" x6"x 13"-inches

#### FREQUENTLY ASKED QUESTIONS

- **Q: What kind of charger should we use for the speaker?**
- A: All common USB chargers can be used, while we suggest the ones 5V/2A or above 2A.
- **Q: What if there's noise or discontinuous sound during playing?**
- A: The speaker can be normally used within 10m under a no obstruction environment. If it is beyond 10m or with obstruction, there might be noise or discontinuous sound.
- **Q: Why does the speaker power off automatically after power on but no BT disconnection?**
- A: When there is no BT pairing in 10minutes, the speaker will shut down automatically to reduce power consumption.
- **Q: Why does the speaker can not connect to the once-paired cellphone?**
- A: First, remove the speaker's paired name from the cellphone's BT List and then restart pairing.
- **Q: What is the working sequence of the speaker?**
- A: The default mode is BT mode but when inserted into the AUX-in cable, it will be AUX IN mode.
- **Q: The speaker doesn't start up in a normal situation.**
- A: Please plug in the charger and try in a few minutes or try to press and hold the power button 10-30s to reset.

#### Notes:

1. Before using this product, please read this manual carefully and keep it for future reference.
2. For the first use, please fully charge the product.
3. Use a certified adapter that has passed national safety certification.
4. You will not use the product for a long time, be sure to charge it once a month at least to maintain its performance. Do not use this product in an extremely cold or hot environment, such as temperature beyond the range of 41F-95°F. If using it beyond the above range, the product may stop automatically to protect the internal circuit.
5. When charging in a high temperature environment, the product may automatically stop charging to protect the

battery. At this time, the charging indicator usually flashes quickly to indicate that the charging environmental temperature or the product internal temperature is too high

6. Storage environment temperature 41-95F RH <70% (recommended 77F +5

## **Important Safety Instructions**

1. Do not disassemble or repair this speaker personally, otherwise, it may cause damage or personal injury.
2. Do not use it in dusty, humid, dry, and high-temperature environment.
3. Do not place this product near a heat source, or a place with direct sunlight, a lot of dust, or mechanical vibration.
4. In order to reduce the risk of fire, please do not cover this product with newspapers, the table does, curtains, etc, during use. If the product has a waterproof feature, DO NOT exceed the nominal parameter range when using it.
5. When the product is damaged such as the power cord or plug is damaged, liquid enters or objects fall into the device, unable to operate normally or fall, it must be repaired.
6. When the product is fully charged, DO NOT connect it to the charger for further long time charging.
7. The maximum ambient temperature should not exceed 104F.

## **FCC Warning**

This device complies with part 15 of the FCC rules. Operation is subject to the following two conditions: (1) this device may not cause harmful interference, and (2) this device must accept any interference received, including interference that may cause undesired operation. Changes or modifications not expressly approved by the party responsible for compliance could void the user's authority to operate the equipment.

This equipment has been tested and found to comply with the limits for a Class B digital device, pursuant to part 15 of the FCC Rules. These limits are designed to provide reasonable protection against harmful interference in a residential installation. This equipment generates uses and can radiate radio frequency energy and, if not installed and used in accordance with the instructions, may cause harmful interference to radio communications. However, there is no guarantee that interference will not occur in a particular installation. If this equipment does cause harmful interference to radio or television reception, which can be determined by turning the equipment off and on, the user is encouraged to try to correct the interference by one or more of the following measures.


- Reorient or relocate the receiving antenna.
- Increase the separation between the equipment and receiver.
- Connect the equipment into an outlet on a circuit different from that to which the receiver is connected.
- Consult the dealer or an experienced radio/TV technician for help.

## **Radiation Exposure Statement**

This equipment complies with FCC radiation exposure limits set forth for an uncontrolled environment. This equipment should be installed and operated with a minimum distance of 20cm between the radiator and your body.

## **Documents / Resources**



	<p><b><a href="#">PYLE PGMSP100 Portable Wireless BT Streaming Gramophone Speaker</a></b> [pdf] User Guide PYLEPGMSP100, 2A6FX-PYLEPGMSP100, 2A6FXPYLEPGMSP100, PGMSP100 Portable W ireless BT Streaming Gramophone Speaker, PGMSP100, Portable Wireless BT Streaming Gra mophone Speaker</p>
---	---