



PYLE PGMC1PS4 PS4 Game Console Handle Wireless Controller User Guide

[Home](#) » [Pyle](#) » PYLE PGMC1PS4 PS4 Game Console Handle Wireless Controller User Guide 

Contents

- [1 PYLE PGMC1PS4 PS4 Game Console Handle Wireless Controller](#)
- [2 OverView](#)
- [3 Introduction](#)
- [4 Product Function](#)
- [5 Controller Button Corresponding Table](#)
 - [5.1 PC GAMEPAD MODE](#)
 - [5.2 PC~XBOX IN MODE](#)
- [6 Documents / Resources](#)
- [7 Related Posts](#)

PYLE

PYLE PGMC1PS4 PS4 Game Console Handle Wireless Controller



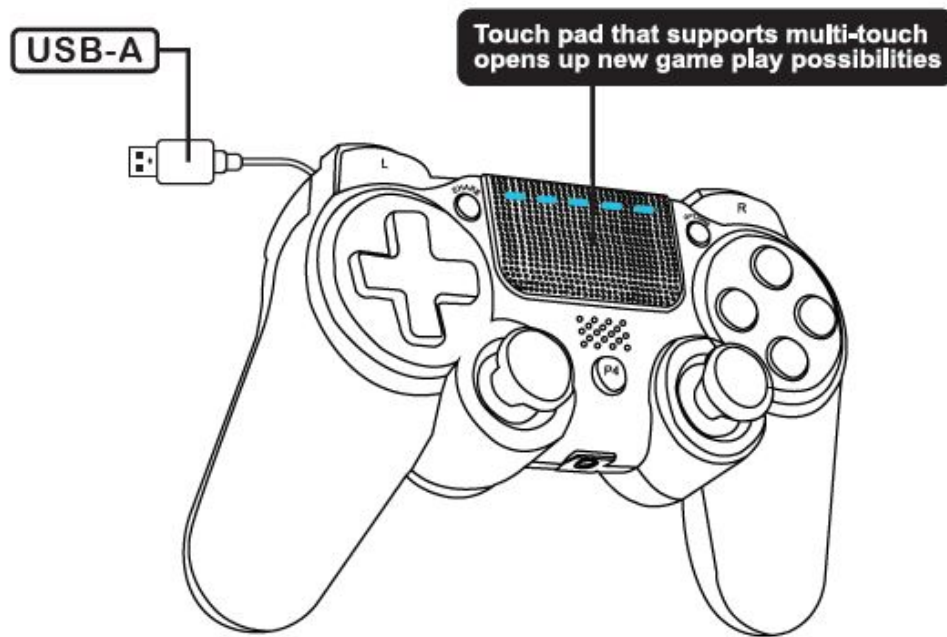
Overview



Please read this instruction manual thoroughly before using the unit. Please keep for future reference.

Please read this Manual in detail before use in order to operate and use it correctly, and bring the superior performance of the product into full play. The descriptions in this Manual are based on the default settings of the device. All the pictures, statements and text information in this Manual are for reference only. Please refer to the actual product. The content is subject to update without further notice. The update will be included in the new version of the Manual, and the Company reserves the right of final interpretation. Available functions and

additional services may vary by device, software or service provider. If there are typographical errors or translation errors, we sincerely hope for all users understanding!

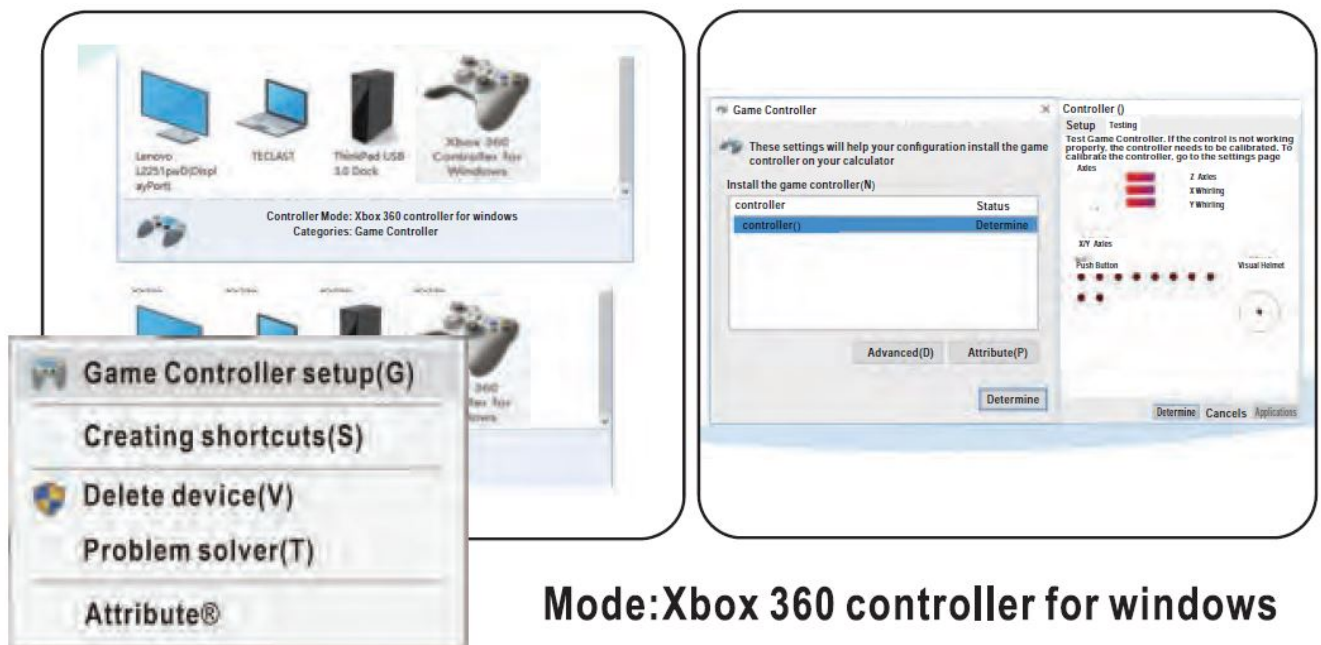


Introduction

1. The Controller is equipped with a light bar that displays various colors. Different light bar colors can be used to represent different game players, and can be used as an important message reminder (for example, the game character's health reduced, etc.). In addition, the light bar can also interact with the PlayStation Camera, allowing the Camera to determine the Controller's action and distance through the light bar.
2. Standard buttons: P4, Share, Option, , , , , , , L1, L2, L3, R1, R2, R3, VRL, VRR.
3. The Controller supports any software version of the PS3/PS4 console.
4. The controller uses standard PS4 function (The same function as the original controller, can work on the PC through the driver, supports X-Input and D-Input, no need driver on Windows 10), and supports Android system devices.

Product Function

The controller is Standard PS4 work mode



Mode:Xbox 360 controller for windows

Any function in the game can be realized on the PS4 console, including basic digital and analog buttons, as well as the six-axis SENSOR function and LED color display function, and can also support vibration function for specific games. When tested on the Windows 10 PC there will appear a virtual 6 axis 10 key + visual helmet function of the device, 6 Axis 10 Key 1POV in Windows 10 system default interface mode (X-Input mode).

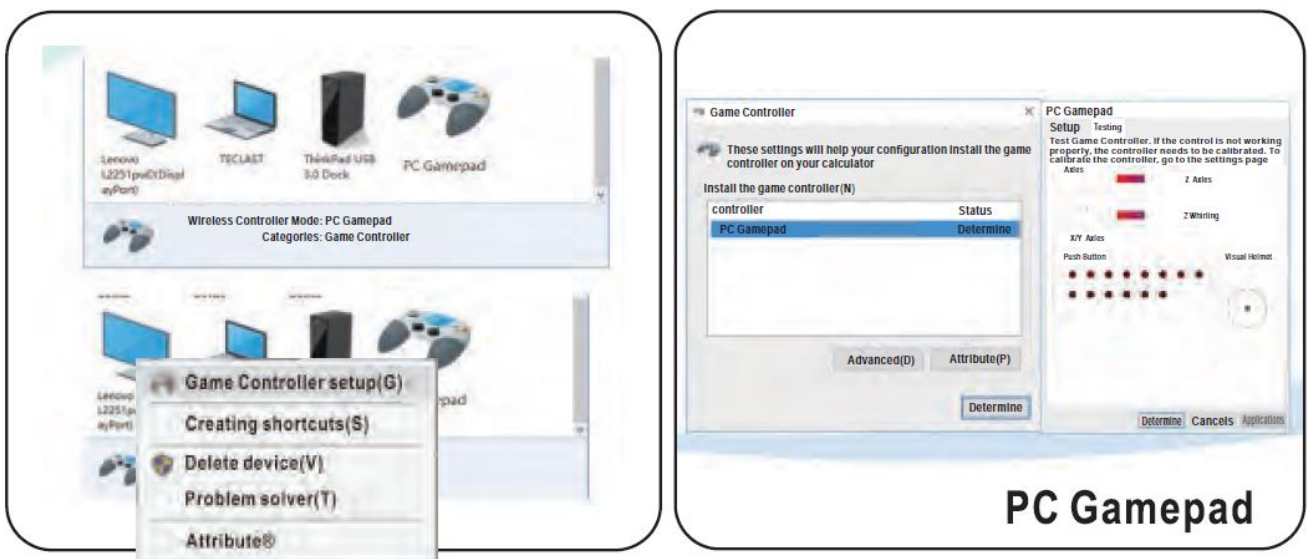
Color LED Indication

When multiple Controllers are connected to the PS4 console at the same time, the controller LED will be display different colors to distinguish players. For example, user 1 displays blue, user 2 displays red. PC360 (X-Input, D-Input) display green; Android Controller mode display blue.

PS4/PS3 Console Connection Method

Connect the Controller to USB port of the PS4/PS3 console and press the P4 key, the LED light of the controller will display a constant bright color, indicating that the Controller has been connected with the console. When there are multiple Controllers connected to the Console at the same time, the LED light of the Controller will display different colors to distinguish different users and players.

PC Wired Connection



PC Gamepad

Connect the Controller USB cable to USB port of the Computer, and the Computer will automatically install the driver. You can see the driver is being installed in the Windows 7/10 interface.









After the driver is installed, the Controller icon will appear in the "Device and Printer" interface and the device

name is “Xbox 360 Controller for Windows”. Press and hold the “Share + Options” combination key for 3 seconds, you can switch to PC mode (D-Input) from (X-Input) and the display name is “PC Gamepad”. X-Input and D-Input modes can be switched between each other through this combination key.

Android System Devices Connection Method

Connect the Controller USB cable to the USB port of the Android system devices, and the Controller will be automatically recognized as the Android Controller mode.

Controller Button Corresponding Table

PS4					L1	R1	L2	R2	share	option	L3	R3	P4	T-PAD
PC	1	2	3	4	5	6	7	8	9	10	11	12	13	14
X-IN	3	1	2	4	5	6	L2	R2	7	8	9	10	Home	----
PS3					L1	R1	L2	R2	select	START	L3	R3	PS	----
ANDROID	x	a	b	X	L1	R1	L2	R2	select	START	L3	R3	Home	----

PC GAMEPAD MODE



PC~XBOX IN MODE



CONTROLLER REFERENCE CURRENT


PARAM	SYMBOL	MIN DATA	TYPICAL DATA	MAX DATA	UNIT
WORKING VOLTAGE	Vo			5	V
WORKING CURRENT	Io		30		m A
MOTOR CURRENT	Im			80 – 100	m A

Questions? Issues?

We are here to help!

Phone: (1) 718-535-1800
Email: support@pyleusa.com

Documents / Resources

	<p>PYLE PGMC1PS4 PS4 Game Console Handle Wireless Controller [pdf] User Guide PGMC1PS4, PS4 Game Console Handle Wireless Controller, with LED Lights Built-in Speaker 6-Axis Sensor</p>
---	---