



PYLE PGMC1NTN Nintendo Switch Game Console Handle User Guide

[Home](#) » [Pyle](#) » PYLE PGMC1NTN Nintendo Switch Game Console Handle User Guide 

*PYLE PGMC1NTN Nintendo Switch Game
Console Handle User Guide*



PYLE
PyleUSA.com



PGMC1NTN
Nintendo Switch Game Console Handle
Wireless Controller with LED Lights

USER GUIDE

DESIGNED FOR NSL

Please read this instruction manual thoroughly before using the unit. Please keep for future reference.

Contents

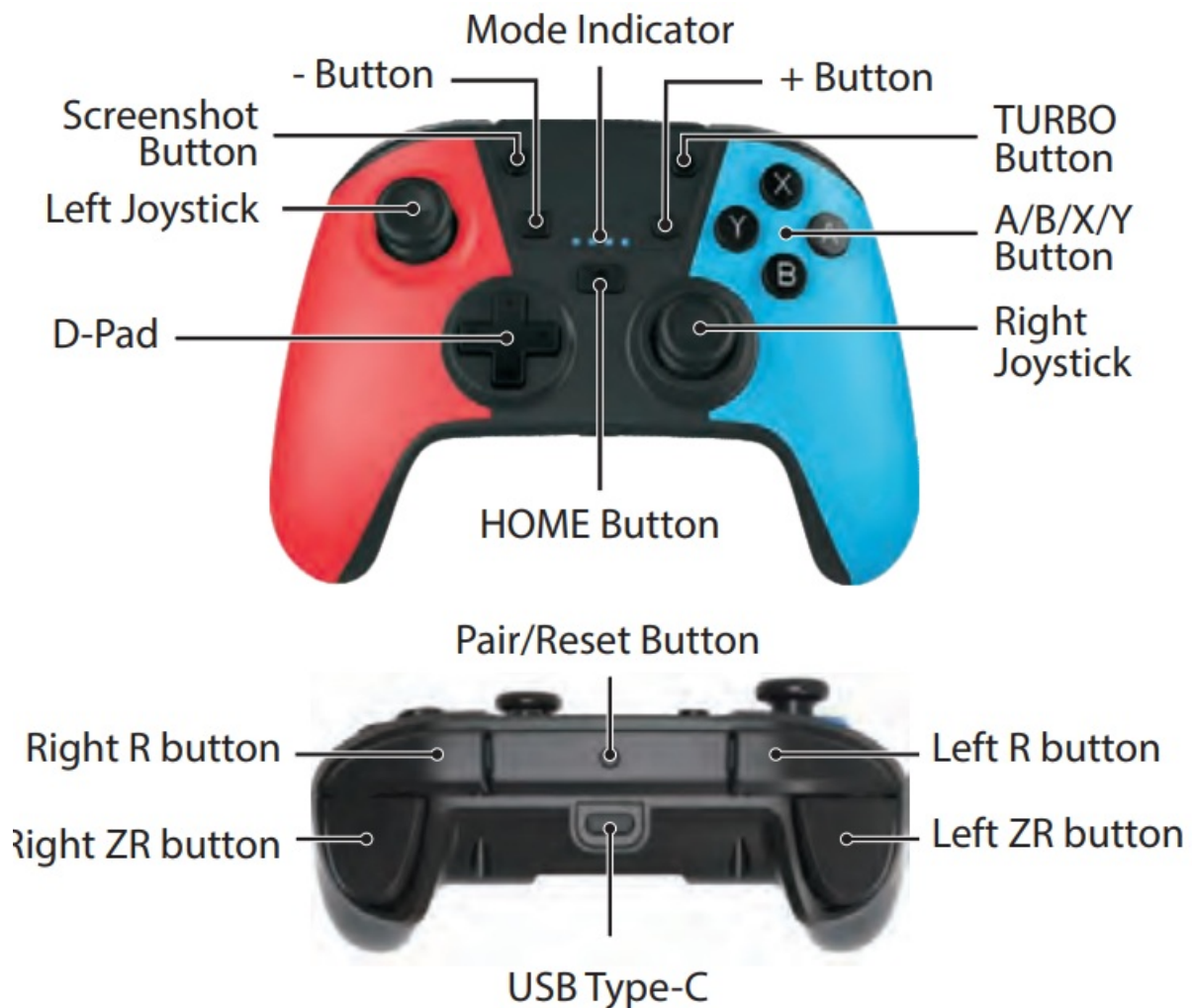
- 1 Brief Introduction
- 2 Controller Button Description
- 3 Mode and Connection Instruction
- 4 ELECTRICAL SPECIFICATIONS
- 5 Documents / Resources
 - 5.1 References
- 6 Related Posts

Brief Introduction

Please read this manual in detail before use in order to operate and use it correctly, and bring the superior performance of the product into full play. The descriptions in this Manual are based on the default settings of the device; all the pictures, statements and text information in this Manual are for reference only. Please refer to the

actual product. The content is subject to update without further notice. The update will be included in the new version of the Manual and the Company reserves the right of final interpretation. Available functions and additional services may vary by device software or service provider. Please fully charge the Switch Controller before use! If there are typographical errors or translation errors, we sincerely hope for all users' understanding!

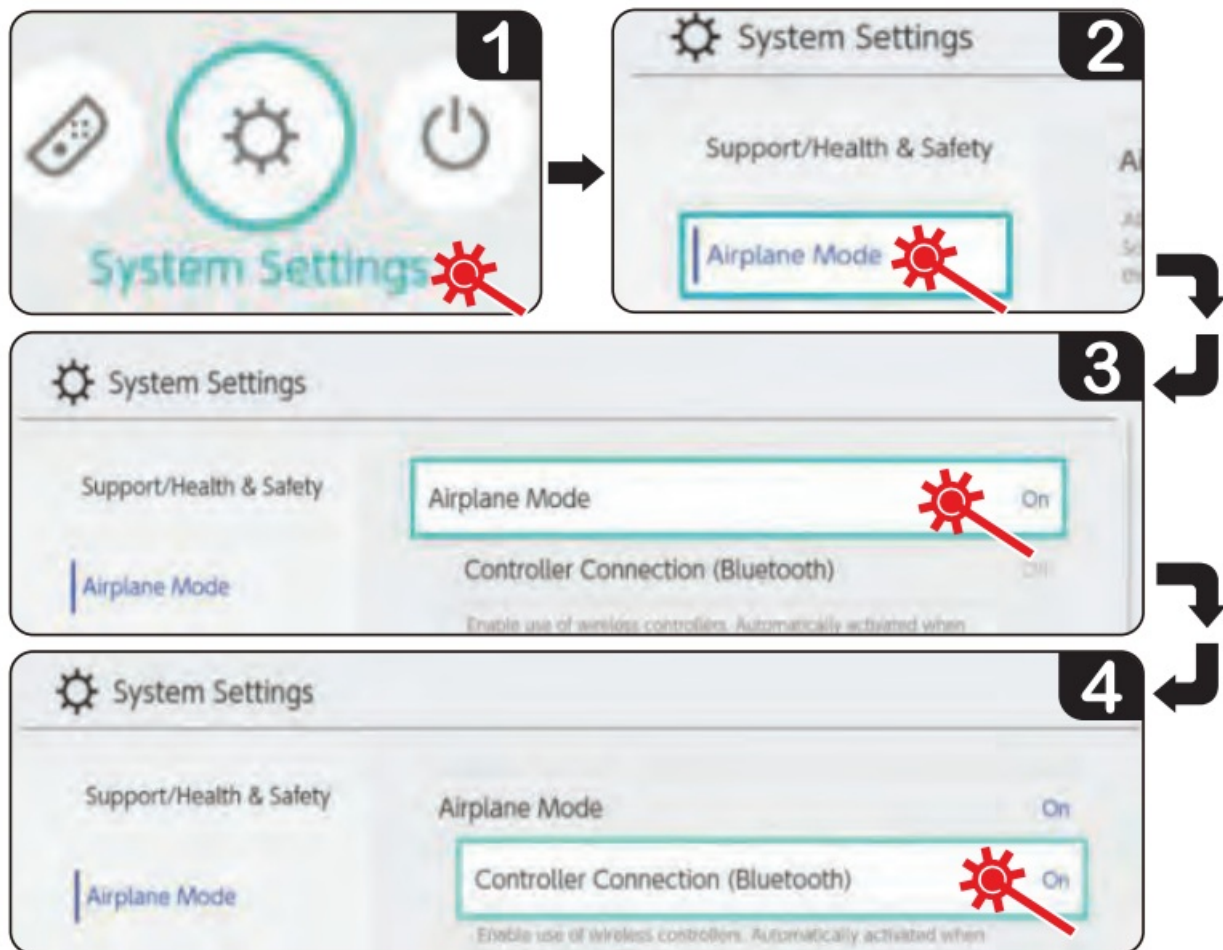
Controller Button Description



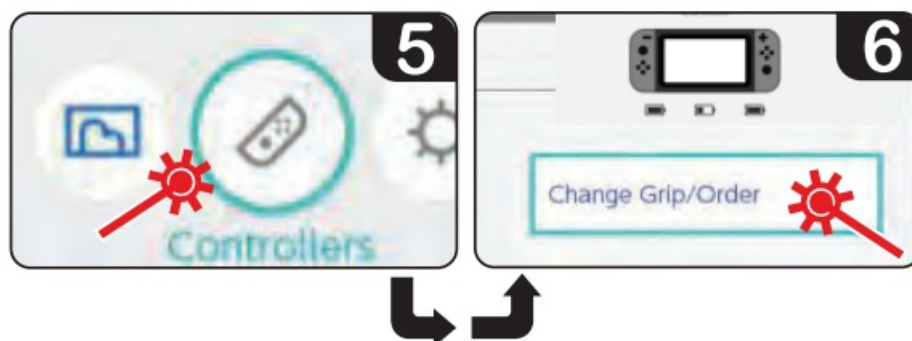
Mode and Connection Instruction

Wireless BT Switch mode

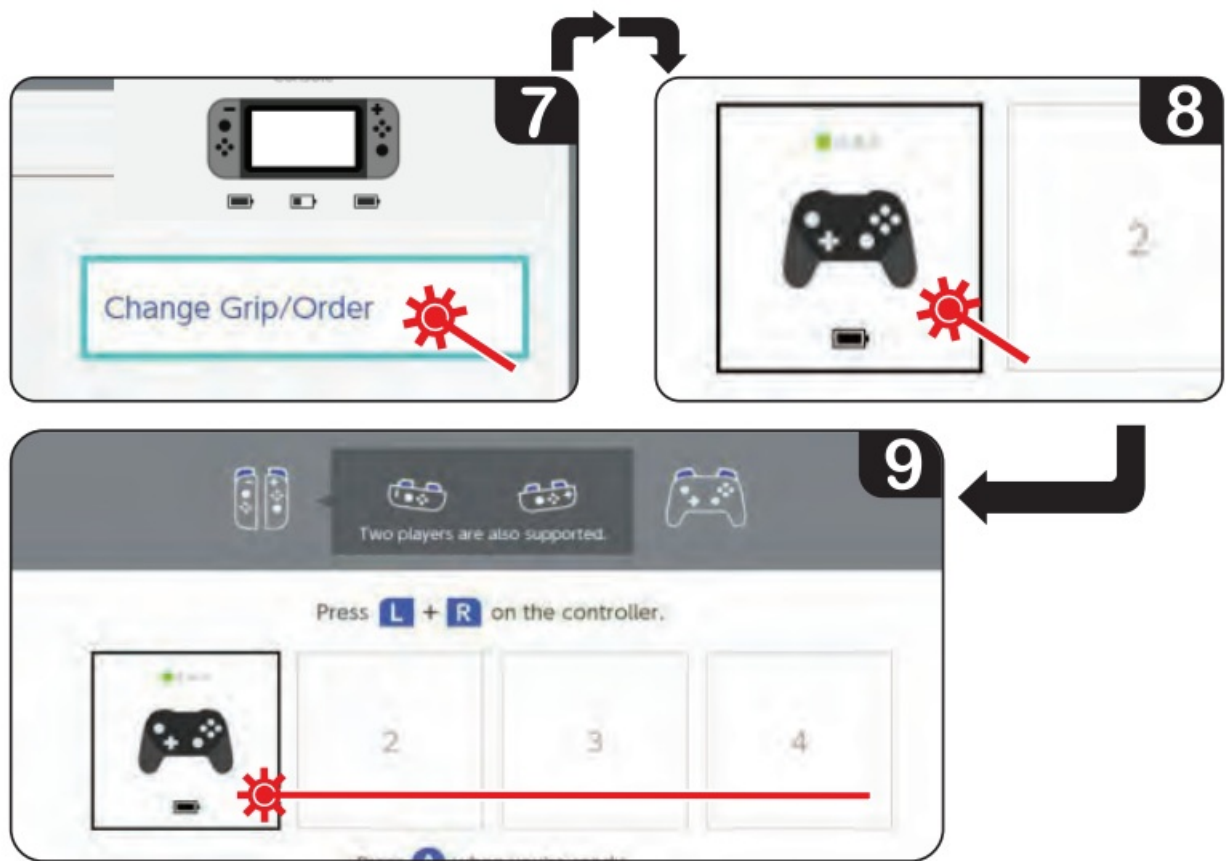
1. Turn on the Switch console, click the System Settings Menu Button on the Main Page interface and click the Airplane Mode option on the next-level option menu, and then click the Controller Connection (BT) to turn ON the Wireless BT function.



2. Enter the Wireless BT pairing mode of the Switch Controller, click the Controllers menu on the Switch main page interface and then click the Change Grip/Order on the next level option menu, the Switch will automatically search for the paired controller.



3. Press and hold the Y Button and then press the HOME Button for 2 seconds or press and hold the Pairing Button for 3 seconds to enter the Wireless BT search mode, LED 1 – LED 4 running lamp flashed. After successful connection, the Switch automatically distributes controller channel and the corresponding channel indicator light will always be on. Synchronous state or the Switch is pairing connection with controller, LED 1 – LED 4 running lamp flashing.



Note: After the controller enters the pairing mode, it will automatically sleep if there is no synchronization within 3.5 minutes. Press and hold the Pairing button for 3 seconds to enter the pairing mode, short press the button to reset the controller. In case of malfunction or crash of the controller function, press this button for short to reset the controller.

Wireless BT Android Mode: Press A + HOME button for 2 seconds to enter Wireless BT search mode, LED 2 + LED 3 flash when pairing, LED 2 + LED 3 indicator light is on after successful connection.

2.4G D-INPUT Mode: Press “-” + HOME button for 2 seconds to enter 2.4G search mode, LED 2 + LED 3 flash when pairing, LED 2 + LED 3 light is on after successful connection.

2.4G X-INPUT Mode: Press “+” + HOME button for 2 seconds to enter 2.4G search mode, LED 1 + LED 4 flash when pairing, LED 1 + LED 4 light is on after successful connection.

2.4G Android Mode: Press “-” + HOME button for 2 seconds to enter 2.4G search mode: LED 2 + LED 3 flash when pairing LED 2 + LED 3 light is on after successful connection.

2.4G PS3 Mode: Press L + HOME button for 2 seconds to enter 2.4G search mode, four LEDs flash at the same time, after successful connection, the Switch automatically distributes controller channel and the corresponding channel indicator light will always be on.

Remark: 2.4G Dongle is an optional and not standard configuration!

Re-connection Mode Press the HOME button for 1 second to wake up the controller, and it will automatically connect to the paired console. It will automatically sleep if it fails to connect back for 10 seconds, it hasn't wake-up function when press other buttons.

Charging Indication When the controller is power off, LED 1 – LED 4 mode indicator light flashes slowly when charging, and the fully charged LED goes out. Battery low voltage alarm: indicator light flashes; and indicator

flashes slowly under charging condition, and the indicator light is on when fully charged.

Automatic sleep/Power on/Power off

The Switch screen is off and the controller automatically sleeps; the controller automatic sleep (including sensor action) if there is no keystroke within 5 minutes.

In Wireless BT mode, press the HOME button for 5 seconds to shut down the controller and disconnect from the Switch. Short press the Pairing button could to shut down the controller directly, short press the HOME button for 1 second to turn on and wake up the controller.

Low Voltage Alarm When the battery of the controller is lower than $3.55V \pm 0.1V$, the current working channel light flash to indicate low battery. If continue to use the controller until the voltage lower than 3.45 V, the controller is automatically entered into sleep state.

USB Mode Function Connect the controller with USB cable and insert the cable to Switch USB port, the controller will be automatic identification as a wired game pad, and you want open the switch cable connection function in USB cable mode. Connect USB cable with the controller and insert it to PC, it will be automatic identification as an X-INPUT Game pad mode, LED 1 + LED 4 flash. On PC X-INPUT mode, long press the “-” + “+” button for 3 seconds to switch to D-INPUT mode and LED 2 + LED 3 indicator light flash. Connect USB cable with the controller and insert it to PS3 console and press the L button together, it will be automatic identification as a PS3 Game pad. Connect USB cable with the controller and insert it into the USB port of Android device, it will be automatically recognized as Android Game pad mode, and LED 1 + LED 4 light will be on.

LED indication of each USB cable mode: Switch game pad is be automatically assigned the corresponding channel indicator by the Switch; X-input mode: LED 1 + LED 4 indicator light on; D-input mode: LED 2 + LED 3 indicator light on; PS3 mode: Gamepad channel indicator allocated by PS3 console.

TURBO speed adjustment, 3 gears speed, 8Hz-12Hz-15Hz, Default to 12Hz. Press the TURBO button and press the corresponding button to set TURBO; You can set A, B, X, Y, L, ZL, R, ZR; If you want to cancel the setting, repeat the setting operation; Adjust TURBO speed: TURBO+UP: Increase one gear speed; TURBO+DOWN: Decrease one gear speed.

SWITCH Motor Vibration Strength Adjustment Press and hold the L+ZL+R+ZR button for 3 seconds for adjustment, there are 3 levels of strength, 25%-50%-100% Default to 50% strength. After setting, the corresponding level lamp is always on for 1 second, and the motor vibrates for 1 second.

Six-Axis Sensor Adjustment Press the “B” + “-” + HOME button for power on, two sets of lights flash each other, press again “+” button for adjustment.

Reset Function When the controller function is abnormal or crashes, you can short press the Pairing button to reset the controller.

Controller Reference Current

CURRENT	TYPICAL VALUE
SLEEP CURRENT	30UA
PAIRING CURRENT	<30-60MA
WORKING CURRENT	<30MA
MOTOR VIBRATION CURRENT	≈60-120MA

ELECTRICAL SPECIFICATIONS

POWER SUPPLY	BUILT-IN LI BATTERY
BATTERY CAPACITY	500MAH
CHARGE MODE	USB DC 5V
AXIS SENSOR	SIX-AXIS GYRO SENSOR

USING TIME	≈16HOUR
CHARGING TIME	≈2HOUR
CHARGING CURRENT	<400MA
VIBRATION FUNCTION	SUPPORT DUAL MOTORS

California Prop 65 Warning

WARNING:

This product contains Nickel carbonate which is known to the state of California to cause cancer birth defects and other reproductive harm. Do not ingest.

For more info go to: www.P65warnings.ca.gov

www.p65warnings.ca.gov

PYLE

PyleUSA.com



VISIT US ONLINE:

Have a question?

Need service or repair?

Want to leave a comment?

PyleUSA.com/ContactUs

PYLE

www.PyleUSA.com/ContactUs

Questions? Issues?

We are here to help! Phone: (1) 718-535-1800

Email: support@pyleusa.com

Documents / Resources



[PYLE PGMC1NTN Nintendo Switch Game Console Handle](#) [pdf] User Guide
PGMC1NTN, Nintendo Switch Game Console Handle

References

- [P Pyle USA Electronics | Home Audio | Car Audio & More](#)

[Manuals+.](#)