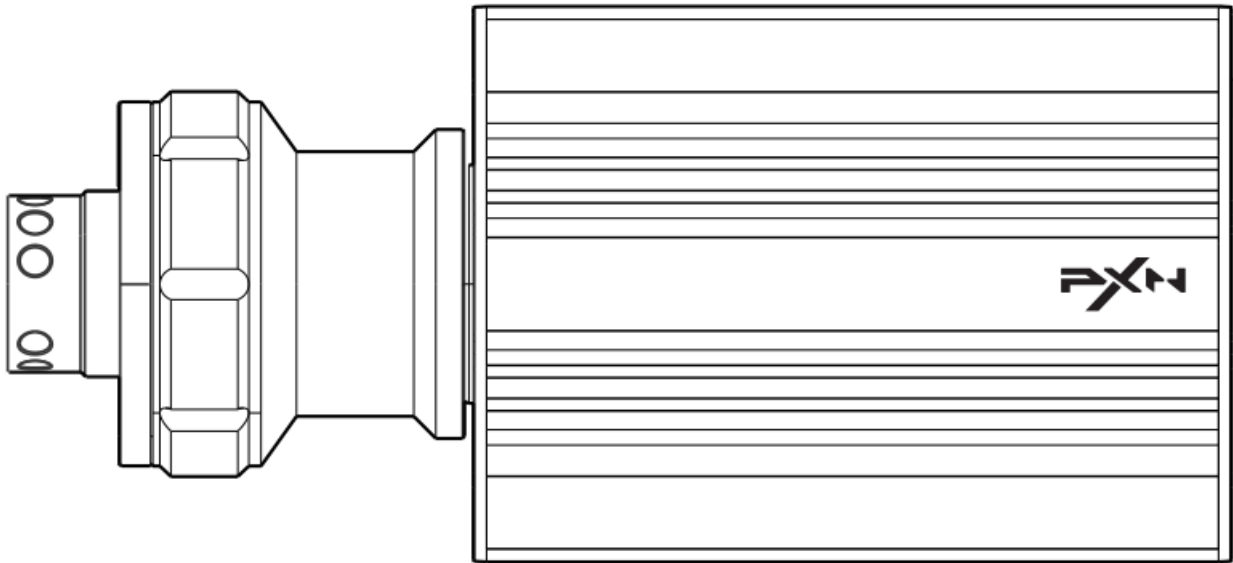




PXN V12 DDL Direct Drive Servo Base User Manual

[Home](#) » [PXN](#) » PXN V12 DDL Direct Drive Servo Base User Manual 



V12 DDL Direct Drive Servo Base
User Manual

Contents

- 1 V12 DDL Direct Drive Servo Base
- 2 System Requirement
- 3 Back Interface of Wheel Base5
- 4 Product Contents
- 5 Installation
- 6 Connect with PS4
- 7 Connect with X-ONE / X-SERIES X|S
- 8 High Configuration Setting of Base
- 9 Attention
- 10 Product Specifications
- 11 Documents / Resources

V12 DDL Direct Drive Servo Base

Please read the manual carefully before using the product, and keep this manual for future reference.-



Warning — Electrical Safety

- Please connect, install and remove this product with proper force, don't twist or pull the connectors and cables.
- Avoid getting water or other liquids on product or its connectors.
- Please keep the product in dry place and keep away from fire, don't expose the product in humid conditions, high temperature or a dusty environment.
- Please use the power cables provided with the base, do not use other power cables.
- Please don't use the power cable if the cable or its connector is damaged, cracked, or broken.
- Make sure the power supply cable is properly plugged into the power outlet and properly connected to the connector on the back of the steering wheel base.
- Please don't disassemble, refit or repair on your own. Any repairs must be carried out by the manufacturer, the authorized representatives or qualified technicians.
- Please use the attached system/ accessories specified by manufacturer only.
- If any unusual sound, heat or odor occurs with this product, please stop using it and disconnect the power cable from the power outlet and cut off other cables.
- If the product is not used for a long time, please disconnect the power cable from the power outlet, which must be located near the product and must be easy to plug and unplug the power cable.



Warning — Possible injuries caused by force feedback and repetitive movements

To avoid any accident, please take below advice for reference

- Avoid lengthy gaming periods.
- Take a break of 10 to 15 minutes after each hour of using this product.
- If you feel any fatigue or pain in your hands, wrists, arms, feet or legs, please stop playing and rest for a few hours before you playing again.
- If the symptoms or pain indicated persist when you start playing again, please stop playing and consult your doctor.

- Please keep out of children's reach.
- Ensure that the steering wheel base is secured according to the instructions in this manual.

Ventilation

Make sure not to block any of the air vents on the steering wheel base. For optimal ventilation, please make sure to do the following:

- Keep the steering wheel base at least 10cm away from any wall.
- Do not place the base in any confined space.
- Do not cover the base.
- Do not let any dust build up on the air vents.

Temperature

- If the device's temperature becomes too high(60 °C and above) due to ventilation, environment, usage or other reasons,the base motor will automatically reduce the output power.
- If the device's temperature becomes too high(70 °C and above) due to ventilation, environment, usage or other reasons,the base motor will automatically power OFF.
- Do not touch any part of the motor when the output power of the base motor is reduced or power OFF due to high temperature.



Heavy Product

Be careful not to drop the product on yourself or on anyone else !



Automatic Calibration

The steering wheel will automatically calibrate after successful connection and power ON.

During calibration, the motor will rotate quickly towards the left and the right before stopping at the center.

To avoid improper calibration or personal injuries, please don't touch the steering wheel during the auto-calibration.

If the product do not operate correctly, or if calibration seems incorrect :

Turn off the game console/PC and disconnect your steering wheel entirely. Then reconnect all cables and accessories as well as restart the console or PC and then enter the game again.

System Requirement

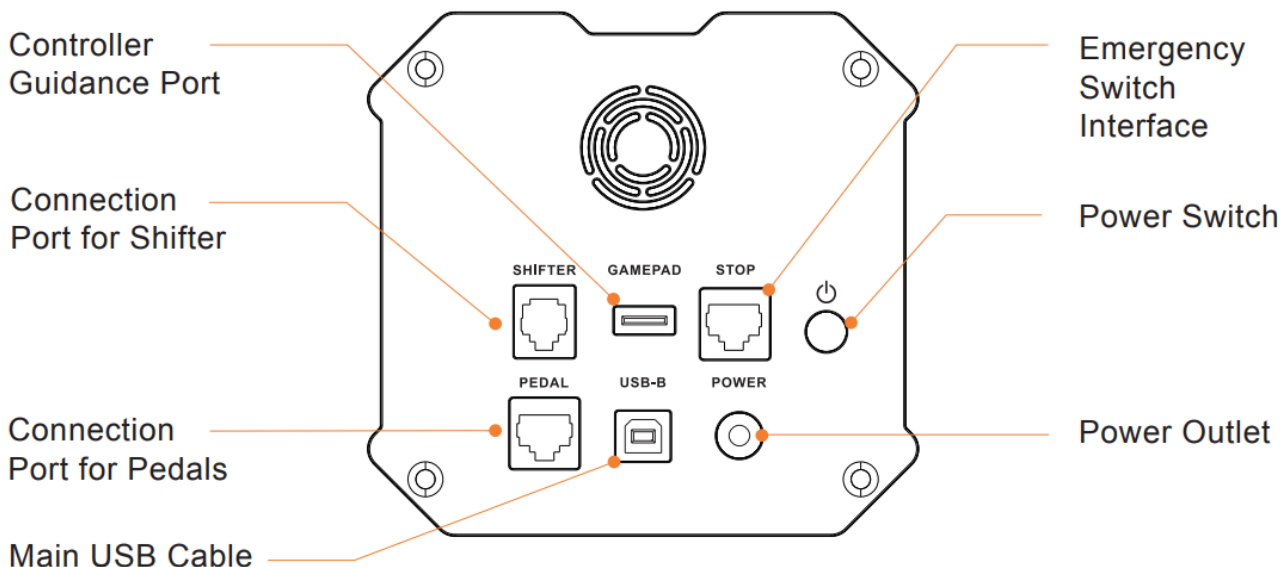
Supported platform: PC, PS4, X-ONE, X-SERIES X|S

System requirement on PC: Windows 7 / 8 / 10 / 11

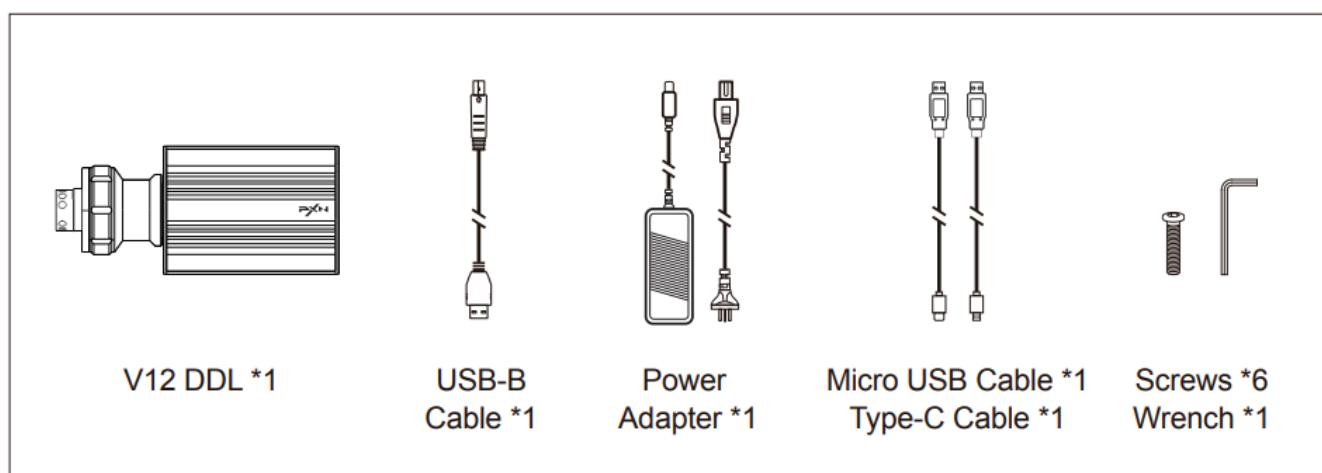
Note: Original controller should be used for guidance while playing on PS4 and X-ONE / X-Series X|S platforms.

Steering wheel requirement: PXN steering wheel

Back Interface of Wheel Base5



Product Contents



Installation

The steering wheel base should be equipped with the brackets or steering seat that can lock screws and stabilize the load.

Step 1 Place the base in the proper position and align the bottom screw hole with the mounting hole.

Step 2 Use the Allen wrench to tighten the screws.

Step 3 Align the top 6 steel balls and bottom 4 steel balls of steering wheel with the corresponding notches on the base's quick release first. Then press the quick release gold part towards the panel and then release. The automatic locking installation is completed at this time.

Connect with PC

* This product needs to be used with the PXN racing wheel.

Step 1 Install the PXN racing wheel to the base properly as required.

Step 2 Connect the base to the power adapter for power supply.

Step 3 Use the USB-B cable to connect the base to the USB port on the PC.

Step 4 Press the power switch on the back of the base and the racing wheel will self-test and return to the center.

Step 5 After successful connection, the racing wheel RGB light will be on red by default.

Connect with PS4

- This product needs to be used with the PXN racing wheel.

Step 1 Before connecting, please make sure the PS4 console is ON and the PS4 original controller is OFF.
(Long press the PS button on the controller until the controller LED is off to turn it off)

Step 2 Connect the base to the power adapter for power supply.

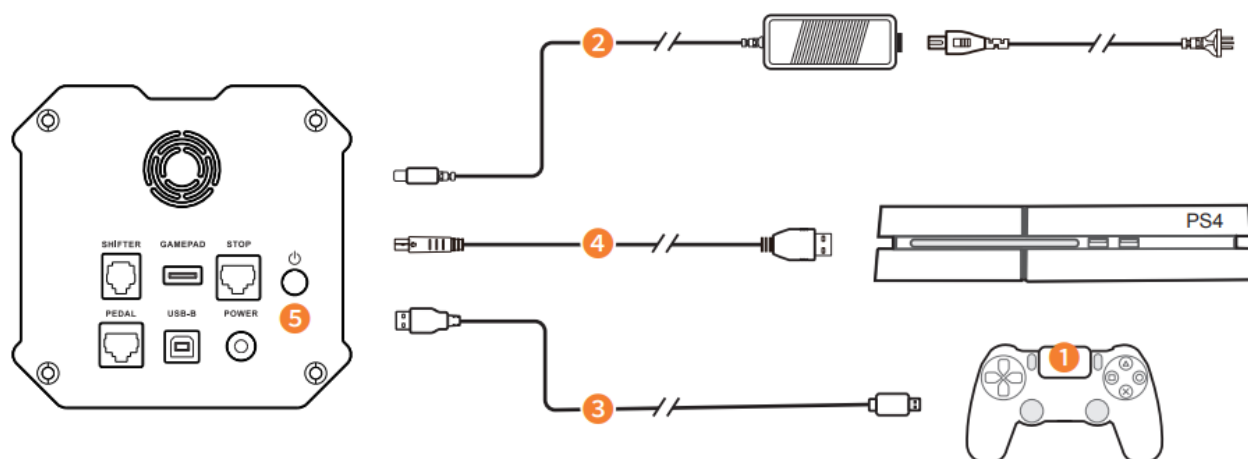
Step 3 Use the Micro USB cable to connect the PS4 original controller to the controller guidance port on the back of the base.

Step 4 Use the USB-B cable to connect the base to the USB port of the PS4 console.

Step 5 Press the power switch on the back of the base, and the racing wheel will self check and return to the center.

Step 6 Press the PXN button on the racing wheel to enter the console user page, then press the button on the wheel to identify the user and control the console, the racing wheel RGB blue light is always ON by default after the successful connection.

[PS4 Connection Diagram]



Connect with X-ONE / X-SERIES X|S

This product needs to be used with the PXN racing wheel.

Step 1 Before connecting, please make sure the Xbox console is ON and the Xbox original controller is OFF.
(Long press the Xbox button on the controller and select Turn OFF controller on the console)

Step 2 Connect the base to the power adapter for power supply.

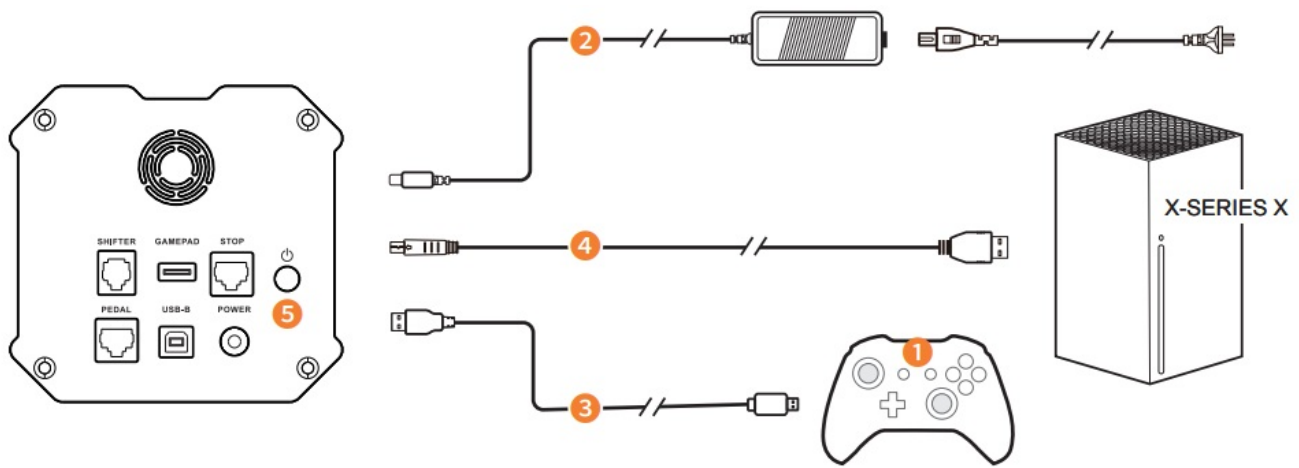
Step 3 Use the Micro USB cable/ Type-C cable to connect the Xbox original controller to the controller guidance port on the back of the base.

Step 4 Use the USB-B cable to connect the base to the USB port of the Xbox console.

Step 5 Press the power switch on the back of the base, and the racing wheel will self check and return to the center.

Step 6 Press the PXN button on the racing wheel to the console homepage, the racing wheel RGB green light is always ON by default after the successful connection.

[XBOX Series XConnection Diagram]



High Configuration Setting of Base

Download for iOS: App Store search [PXN Wheel].

Download for Android: Google Play search [PXN Wheel].

Download the APP [PXN Wheel] on the mobile phone to explore the high configuration settings of base. APP Function Introduction:

- Base effective rotation degree setting
- Adjustment of force feedback value of the base
- Function testing of the base

Attention

- Please read this user manual carefully before using the product.
- Avoid strong shocks or vibration and do not drop.
- Do not disassemble, modify and repair by yourself.
- Prevent water or other liquids from entering the product to avoid damage.
- Avoid storing in humid, high temperature, oily smoke and other places.
- Please handle it gently when connect and remove the product. • Children should be under adult's supervision at all times when using this product.

Product Specifications

Model	V12 DDL
Connection Method	Wired connection
Power Supply	Motor : DC24V USB : 5V
Working Current	Motor : 7.5A USB : ≤500mA when guiding
Package Size	About 410 * 394 * 191 mm
Product Size	About 120 * 120 * 278 mm
Product Weight	About 4900 g
Use Temperature	10-40 °C
Use Humidity	20 80 %


PXN ” is a registered trademark of ShenZhen PXN Electronics Technology Co., Ltd PS4 is a registered trademark of Sony Computer Entertainment Inc.

Xbox is a registered trademark of Microsoft Corporation.

All trademarks are the property of their respective owner. Technical specifications are subject to change. Information contained herein is subject to change without prior notice. ShenZhen PXN Electronics Technology Co., Ltd. shall not be made liable for any errors that may appear.

Please keep this information for later reference.

Documents / Resources

	<p>PXN V12 DDL Direct Drive Servo Base [pdf] User Manual 2AFGF-PXN-V12DDL, 2AFGFPXNV12DDL, pxn v12ddl, V12 DDL, Direct Drive Servo Base, V 12 DDL Direct Drive Servo Base, Servo Base</p>
---	--