

PWAYTEK

CP1-A Wireless Carplay
and Android Auto Adapter



PWAYTEK CP1-A Wireless Carplay and Android Auto Adapter User Manual

[Home](#) » [PWAYTEK](#) » PWAYTEK CP1-A Wireless Carplay and Android Auto Adapter User Manual 

Contents

- [1 PWAYTEK CP1-A Wireless Carplay and Android Auto Adapter](#)
- [2 Compatibility Note](#)
- [3 How to use](#)
- [4 FQA](#)
- [5 Packing List](#)
- [6 FCC Warning](#)
- [7 Documents / Resources](#)
 - [7.1 References](#)

PWAYTEK

PWAYTEK CP1-A Wireless Carplay and Android Auto Adapter



Please read the manual carefully before use.
Recommend keeping this manual for future reference.

Compatibility Note

- Please make sure your car supports wired Carplay or Android Auto functions.
- Required iPhone 6 or later iPhone models with IOS 10 or above for wireless Carplay function.
- Required an Android smartphone that support latest Android Auto function and with Android 11 or higher for wireless Android Auto function.

How to confirm if your car has Apple wired CarPlay or Android Auto function.

Method 1:

Connect your iPhone or Android smartphone to your car by USB data cable and see connection interface logo on your car display.

Method 2:

Check the compatible list below or check with your car manufacturer to see if your car has this capability.
Check out the website for supported car models



<https://www.apple.com/ios/carplay/availablemodels/>



<https://www.android.com/auto/Compatibility#Compatibility-vehicles>

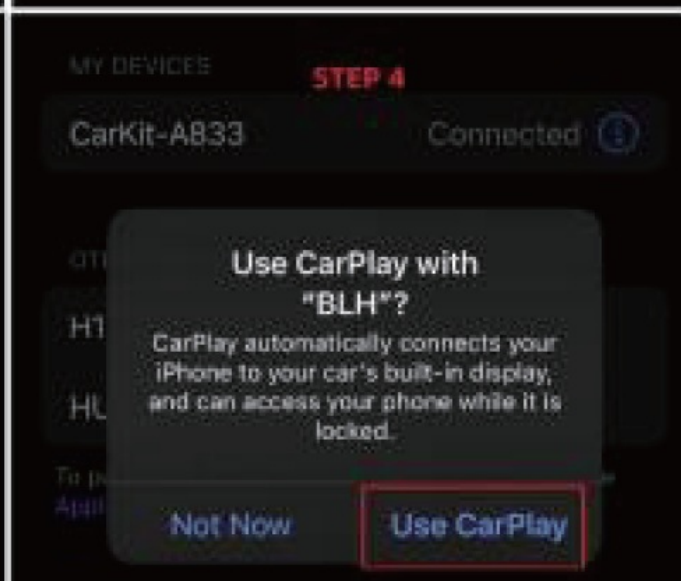
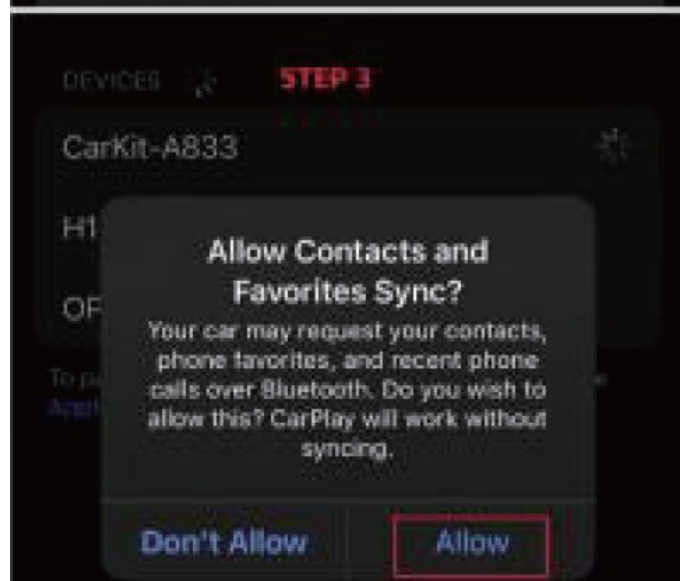
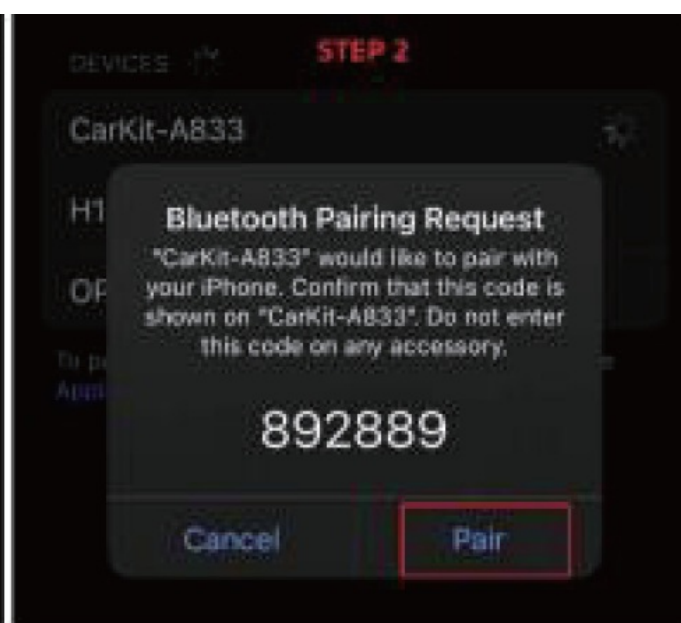
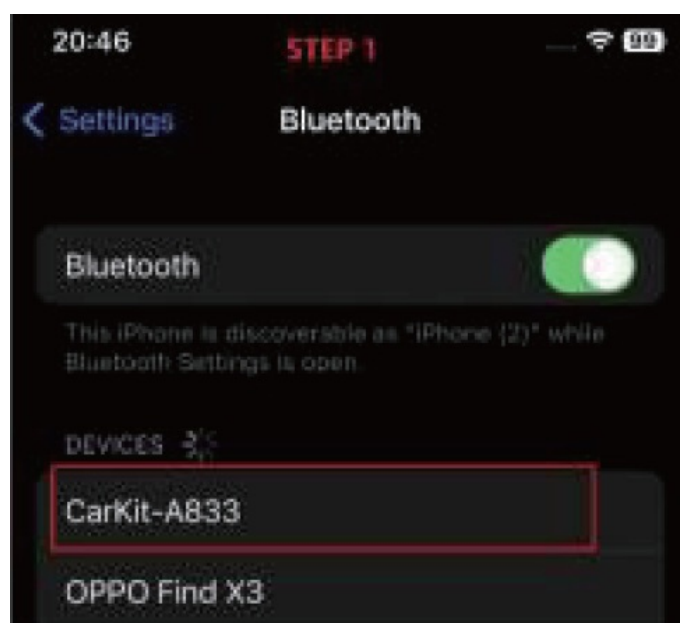
How to use

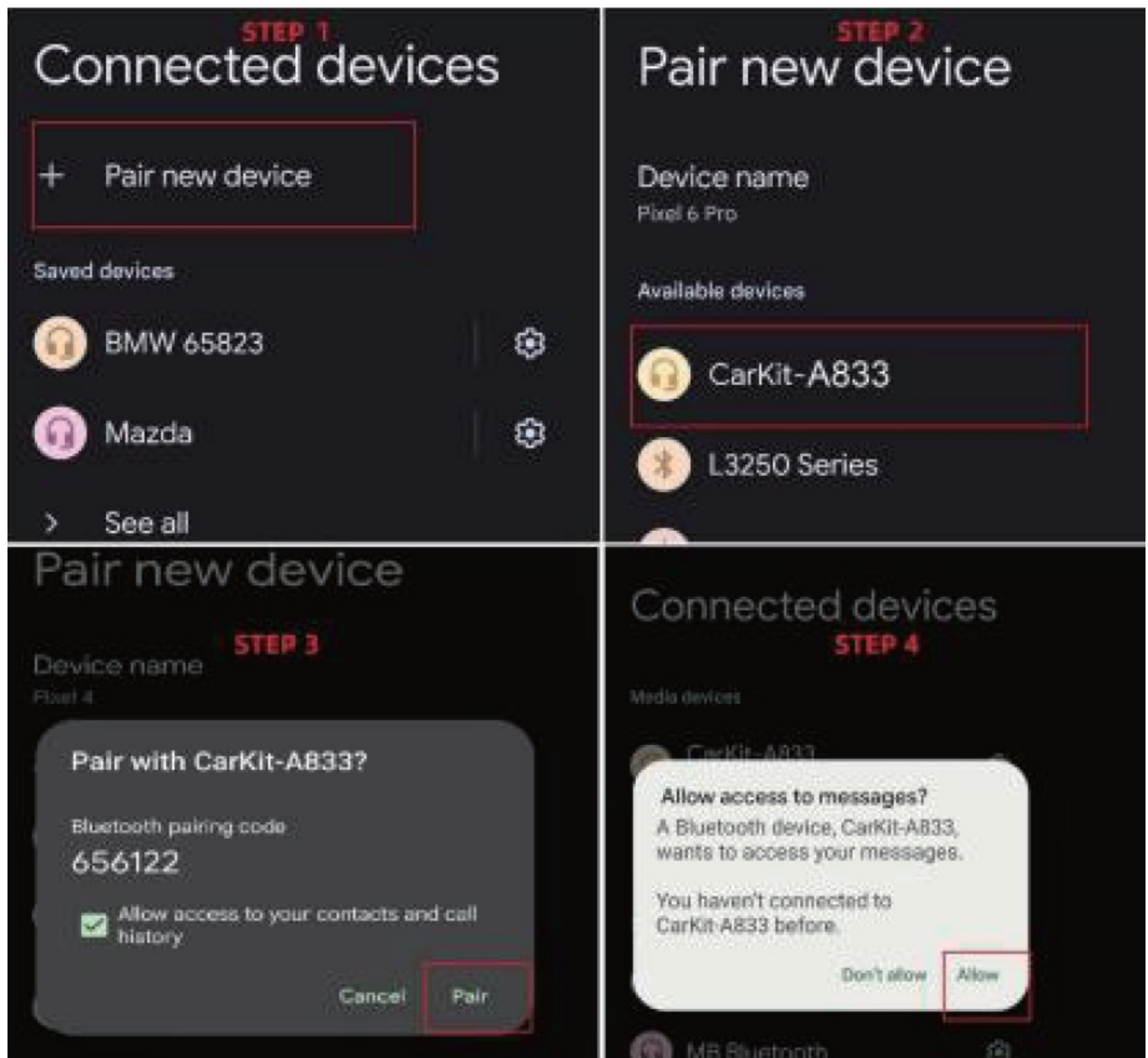
1. Start the car and wait for the car head unit system to be loaded.
2. Connect the Wireless Carplay & Android auto adapter to the USB-A or USB-C port in your car. Please be sure to plug the adapter into the port that is for wired Apple Carplay or Android Auto.
3. After the device is successfully linked to the vehicle, there will be a Bluetooth prompt screen, and the Bluetooth name will be prompted as: smartBox-****.
4. Turn on the Bluetooth of your mobile phone, search and pair the Bluetooth 'smartBox-****', and continue to agree to use it, then you can use the Carplay or Android Auto function normally.
5. Some models linked to Android Auto will not display the Bluetooth prompt interface. But it doesn't matter, you can directly search for Bluetooth 'smartBox-****' on your mobile phone, pair it and use Android Auto normally.

You are ready to enjoy wireless Carplay or wireless Android Auto now.

Please note that you should keep your phone Bluetooth turned on, so that you can automatically link Carplay or Android Auto next time.

Carplay Connection And Android Auto Connection





Please note

1. The wireless Carplay & Android Auto adapter working principle is: uses Bluetooth to establish a pairing between the iPhone or Android smartphone and the vehicle, then switches to using Wi-Fi to maintain the wireless connection.
2. Please ensure wireless Carplay & Android auto Adapter power indicates blue light is on.
3. Please ensure that your car models support wired Carplay or Android auto functions.

FQA

1. What is the Wi-Fi password for the Wireless Carplay & Android Auto Adapter?

We need to connect the Bluetooth, not Wi-Fi. After Bluetooth matching is successful, Wi-Fi will automatically connect.

So no need Wi-Fi password. Make sure your Wi-Fi is turned on and unoccupied when pairing.

2. After pairing Android Auto adapter, can't start Android Auto function or compatible, can't recognize the USB...

1. If your car has use the android auto function for the first time, please use your data cable to connect your phone to activate android auto through a wired method.
2. Please make sure that android auto on your android phone is the last version. If not, please update to the latest version.
3. Please turn off the Bluetooth of your phone and enter the mobile application management to search auto to clear the auto cache. After the cleaning is completed, restart the adapter and reconnect to Bluetooth.
3. **Audio input or output issues: calls rejected or forwarded to voicemail / no play sound /microphone not working /music playback interrupted or paused /voice functioning abnormally.**
 1. Please check if the iPhone or Android smartphone's Bluetooth connect to other devices such as Earphone, watch, etc. If so, please disconnect other auto-connected Bluetooth devices, and android smartphone also need to connect to the vehicle Bluetooth for android auto.
 2. When on a call, check that your 'Audio' output option is Carplay or Android Auto.

4. **When use the wireless Carplay & Android Auto Adapter whether Mobile Phone can use other internet Wi-Fi?**

When enjoying the wireless Carplay or Android Auto adapter function, the phone's Wi-Fi will be occupied by the adapter, so you can't use other internet at the same time, you only can use your phone SIM card internet.

5. **Unable to automatically reconnect**

1. Please make sure that the Bluetooth and Wi-Fi functions of your mobile phone are turned on and the Bluetooth is not occupied when you get in the car.
2. Clear the pairing record, restart the phone and repair the Adapter.

6. **Can the adapter be paired with multiple phones?The adapter can be paired with maximum five phones, but only one device can be connected at a time. If you would like to pair it with a new phone, please cancel the current connection first.**

Please note, by Bluetooth function default, the adapter's system will only auto-connect back to the last used phone.

7. **Can't find the Bluetooth and Wi-Fi of the wireless Carplay & Android Auto Adapter?**

Please make sure wireless Carplay & Android auto adapter power indicates blue light is on and be sure plug the adapter into the port that is for wired Carplay or Android auto.

If convenient, please test it with another phone. If only a specific phone cannot find the Bluetooth or Wi-Fi of the adapter, please try to reset the network and Bluetooth settings of this phone, and then restart the phone once. If the same problem happens on the other phone, it may be defective, please let us know.

8. **The indicator light of the adapter is still on after the car is turned off.**

The car does not cut off all power immediately when the engine is turned off. The adapter's light will not go out immediately; it will turn off after a few minutes. Please rest assured that its power consumption is minimal and will not drain the car battery.

9. **Whether Wireless Carplay & Android auto Adapter support YouTube Video?**

1. It does not support the wireless Carplay function of YouTube.
2. It can support the wireless Android Auto function of YouTube. Please follow the following procedure:
Open Google Browser and type 'AAAD APK' —Download APK—Open 'AAAD'—download 'Car stream'
—Open 'Car stream' go to setting and choose Enable desktop mode. And then, you can enjoy the videos from YouTube by wireless android auto.

Packing List

- 1 x Wireless Adapter
- 1 x TYPE-C to USB-A Adapter
- 1 x User Manual

FCC Warning

This equipment has been tested and found to comply with the limits for a Class B digital device, pursuant to part 15 of the FCC Rules. These limits are designed to provide reasonable protection against harmful interference in a residential installation. This equipment generates, uses and can radiate radio frequency energy and, if not installed and used in accordance with the instructions, may cause harmful interference to radio communications. However, there is no guarantee that interference will not occur in a particular installation. If this equipment does cause harmful interference to radio or television reception, which can be determined by turning the equipment off and on, the user is encouraged to try to correct the interference by one or more of the following measures:

- Reorient or relocate the receiving antenna.
- Increase the separation between the equipment and receiver.
- Connect the equipment into an outlet on a circuit different from that to which the receiver is connected.
- Consult the dealer or an experienced radio/TV technician for help.

Caution: Any changes or modifications to this device not explicitly approved by manufacturer could void your authority to operate this equipment.

This device complies with part 15 of the FCC Rules. Operation is subject to the following two conditions:

(1) This device may not cause harmful interference, and (2) this device must accept any interference received, including interference that may cause undesired operation.

This equipment complies with FCC radiation exposure limits set forth for an uncontrolled environment. This equipment should be installed and operated with minimum distance 20cm between the radiator and your body.

Documents / Resources

<div data-bbox="127 1341 169 1346" data-label="Text"> <p>PWAYTEK</p> </div> <div data-bbox="215 1341 288 1352" data-label="Text"> <p>20250606 14:46:00 P.T. 04:00am</p> </div> <div data-bbox="159 1384 252 1393" data-label="Section-Header"> <h2>User Manual</h2> </div> <div data-bbox="153 1417 260 1460" data-label="Text"> <p>Wireless Carplay & Android Auto Adapter</p> </div> <div data-bbox="140 1545 261 1556" data-label="Text"> <p>Please read the manual carefully before use. Recommend saving this manual for future reference.</p> </div>	<div data-bbox="314 1420 1465 1516" data-label="Text"> <p><u>PWAYTEK CP1-A Wireless Carplay and Android Auto Adapter</u> [pdf] User Manual CP1-A, CP1-A Wireless Carplay and Android Auto Adapter, Wireless Carplay and Android Auto Adapter, Carplay and Android Auto Adapter, Android Auto Adapter, Auto Adapter, Adapter</p> </div>
--	---

References

- **User Manual**

Manuals+. Privacy Policy

This website is an independent publication and is neither affiliated with nor endorsed by any of the trademark owners. The "Bluetooth®" word mark and logos are registered trademarks owned by Bluetooth SIG, Inc. The "Wi-Fi®" word mark and logos are registered trademarks owned by the Wi-Fi Alliance. Any use of these marks on this website does not imply any affiliation with or endorsement.