

 **PULSAR**  
**X2 v3 eS**  
**Medium**  
**Wireless**  
**Mouse**



## PULSAR X2 v3 eS Medium Wireless Mouse User Manual

[Home](#) » [Pulsar](#) » PULSAR X2 v3 eS Medium Wireless Mouse User Manual 

### Contents

- 1 PULSAR X2 v3 eS Medium Wireless Mouse
- 2 Product Usage Instructions
- 3 Basic function
- 4 Indicator light
- 5 Working mode switching
- 6 DPI Setting
- 7 Polling Rate Setting
- 8 LOD Setting
- 9 Motion Sync Setting
- 10 FAQ
- 11 Documents / Resources
  - 11.1 References



**PULSAR X2 v3 eS Medium Wireless Mouse**



### Product Specifications:

- **Model:** Pulsar X2 v3 eS Medium Wireless Mouse
- **Version:** 2023-09-11 V1.0
- **Working Modes:** Wired and RF
- **DPI Settings**
- **Polling Rate Settings:** 500Hz-1000Hz-2000Hz-4000HZ-8000Hz (Wired), 500Hz-1000Hz-2000Hz-4000HZ (Wireless)
- **LOD (Lift-off Distance) Settings:** 1mm – 2mm
- **Motion Sync Settings:** ON – OFF

### Product Usage Instructions

- **Basic Functions:**
  - Left mouse button
  - Right mouse button
  - Forward button
  - Backspace button
  - Middle mouse button
  - Mouse Scroll
- **Indicator Light:**
  - Mouse RF connection indicator
  - Dongle RF connection indicator
  - Working Mode Switching:
    - Toggle switch to switch between wired mode (moved to the left) and RF mode (moved to the right).
- **DPI Setting:**

Adjust DPI settings using the provided controls.

- **Polling Rate Setting:**

Follow the steps provided in the manual to set the polling rate for both wired and wireless modes.

- **LOD Setting:**

Adjust the Lift-off Distance by following the steps mentioned in the manual.

- **Motion Sync Setting:**

Set the Motion Sync preferences by following the steps outlined in the manual.

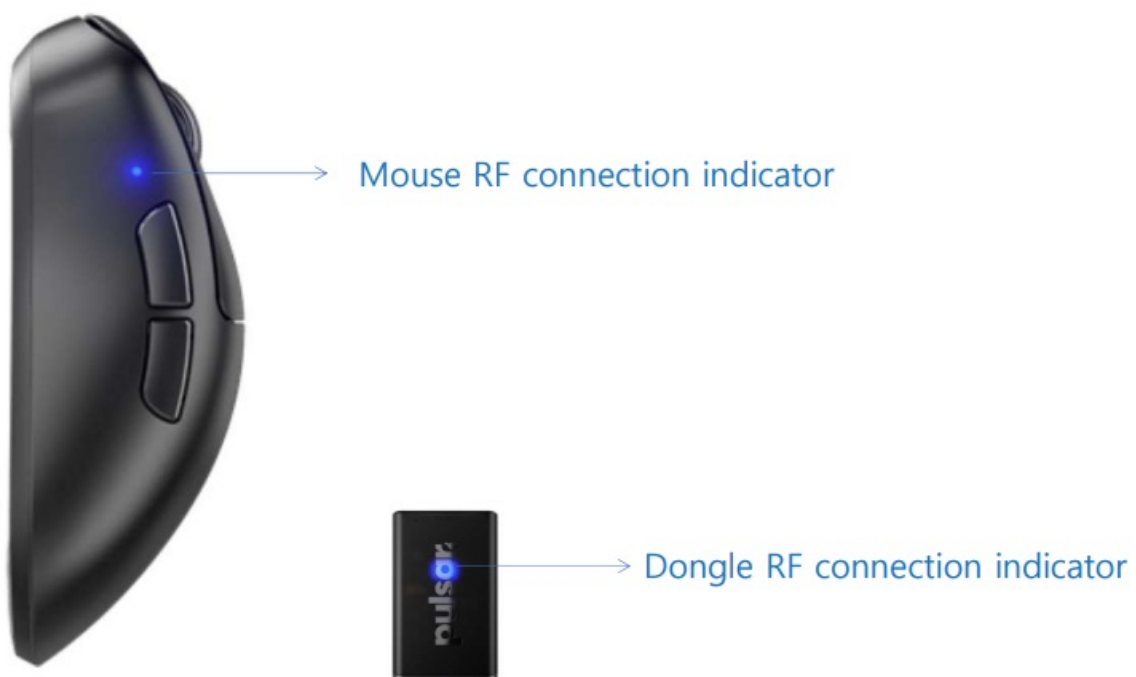
- **FCC Caution:**

The device complies with FCC Rules and should be used in accordance with the provided guidelines.

## Basic function



## Indicator light



## Working mode switching

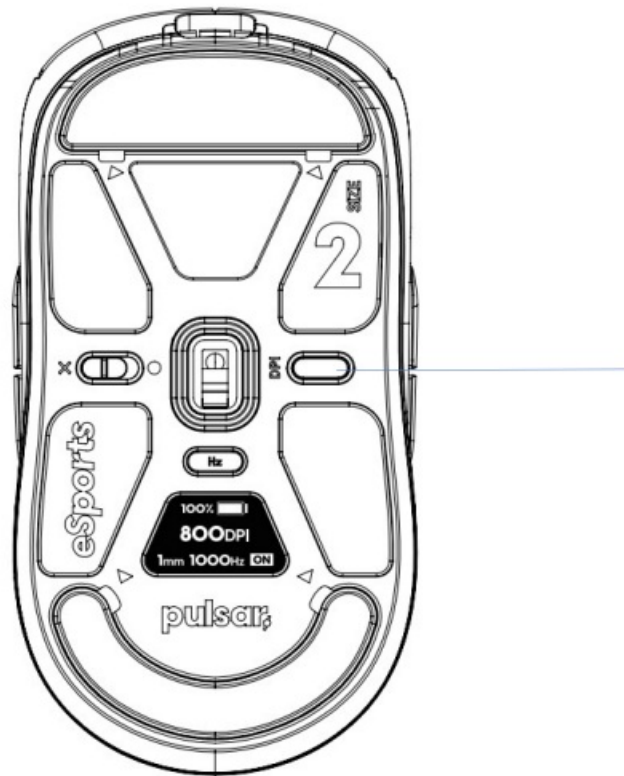
## Toggle switch,

1. wired mode when moved to the left “X”;
2. RF mode when moved to the right “O”;



## DPI Setting

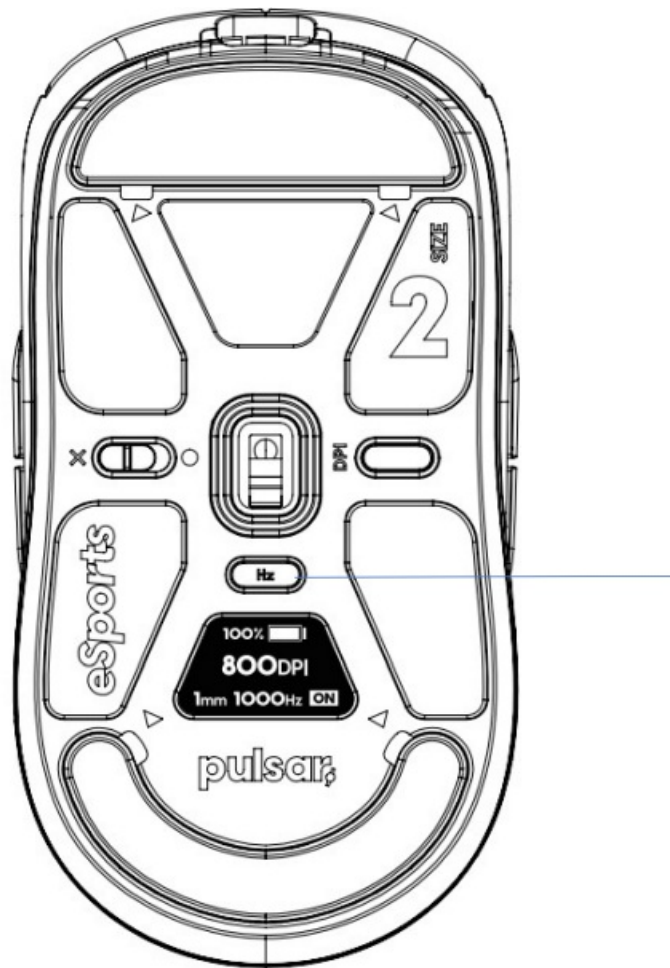




- **Gather Step 1:** Press the “DPI” switch to light the OLED, and the OLED will display the current set values;
- **Gather Step 2:** Press the switch again, set the DPI value, at this time OLED will only display the DPI value, other Settings will be hidden;
- **Gather Step 3:** After the setting is complete, wait 3 second, OLED will display the current overall setting values;
- **Gather Step 4:** Wait another 3 second and the OLED will turn off;
  - DPI sets the step level  
[400-800-1600](#)-3200-6400-12800
  - Back and forth cycle

### Polling Rate Setting





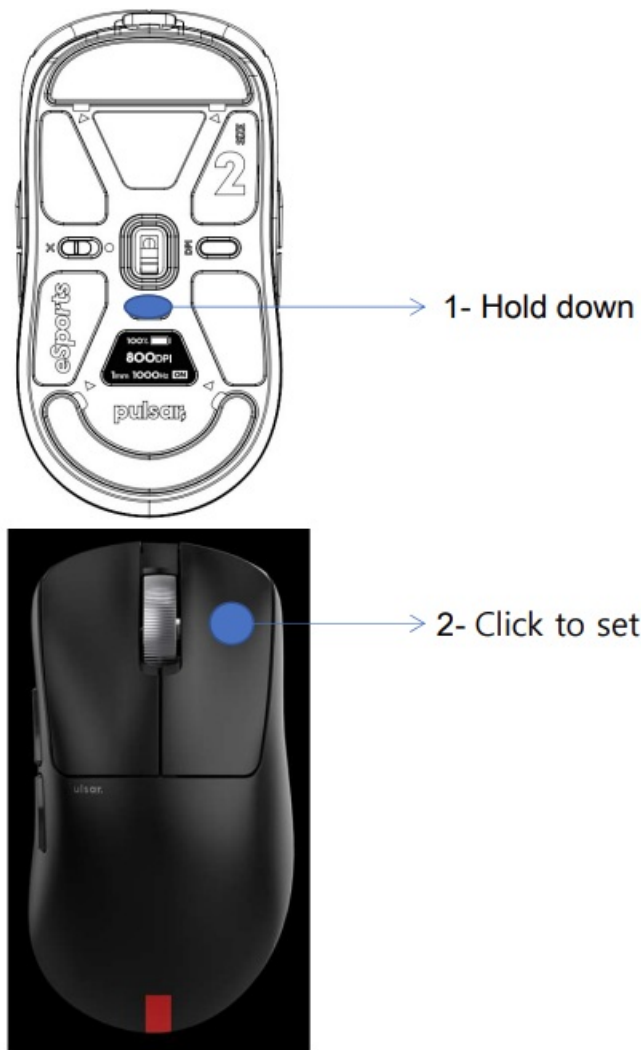
1. **Gather Step 1:** Press the “HZ” switch to light the OLED, and the OLED will display the current set values;
2. **Gather Step 2:** Press the switch again, set the polling rate value, at this time OLED will only display the polling rate value, other Settings will be hidden;
3. **Gather Step 3:** After the setting is complete, wait 3 second, OLED will display the current overall setting values;
4. **Gather Step 4:** Wait another 3 second and the OLED will turn off;
  - Wire mode polling rate sets the step level
  - 500Hz-1000Hz-2000Hz-4000HZ-8000Hz
  - Back and forth cycle
  - Wireless mode polling rate sets the step level
  - 500Hz-1000Hz-2000Hz-4000HZ
  - Back and forth cycle

## LOD Setting



1. **Gather Step 1:** Press the “HZ” switch to light the OLED, and the OLED will display the current set values;
2. **Gather Step 2:** Hold down the “HZ” switch and set the LOD height value by pressing the right mouse button. At this time, OLED will only display the current LOD set value, and other set values will be hidden;

3. **Gather Step 3:** After the setting is complete, wait 3 second, OLED will display the current overall setting values;
4. **Gather Step 4:** Wait another 3 second and the OLED will turn off;
  - LOD sets the step level
  - 1mm—2mm
  - Back and forth cycle

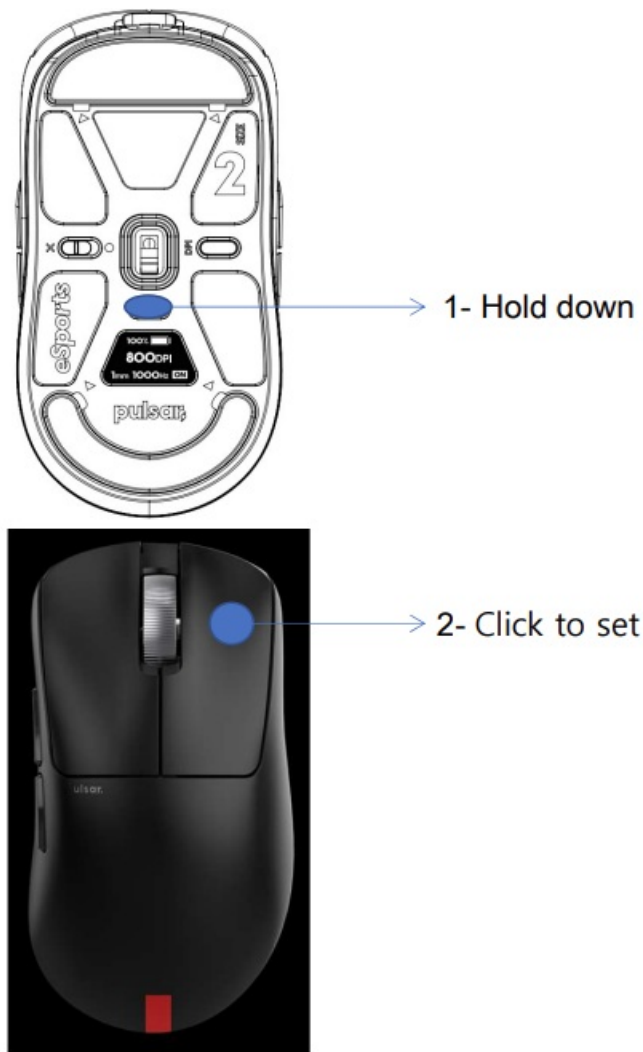


## Motion Sync Setting



1. **Gather Step 1:** Press the “HZ” switch to light the OLED, and the OLED will display the current set values;
2. **Gather Step 2:** Hold down the “HZ” switch and press the right mouse button to enable or disable the “Motion Sync” function. At this point, the OLED will only display the current set value, and other set values will be hidden;
3. **Gather Step 3:** After the setting is complete, wait 3 second, OLED will display the current overall setting values;
4. **Gather Step 4:** Wait another 3 second and the OLED will turn off;
  - Motion Sync sets the step level
  - ON—OFF

- Back and forth cycle



### FCC Caution

This device complies with part 15 of the FCC Rules. Operation is subject to the following two conditions:

1. This device may not cause harmful interference, and
2. this device must accept any interference received, including interference that may cause undesired operation.

Any Changes or modifications not expressly approved by the party responsible for compliance could void the user's authority to operate the equipment.

**Note:** This equipment has been tested and found to comply with the limits for a Class B digital device, pursuant to part 15 of the FCC Rules. These limits are designed to provide reasonable protection against harmful interference in a residential installation. This equipment generates uses and can radiate radio frequency energy and, if not installed and used in accordance with the instructions, may cause harmful interference to radio communications. However, there is no guarantee that interference will not occur in a particular installation. If this equipment does cause harmful interference to radio or television reception, which can be determined by turning the equipment off and on, the user is encouraged to try to correct the interference by one or more of the following measures:

- Reorient or relocate the receiving antenna.
- Increase the separation between the equipment and the receiver.
- Connect the equipment into an outlet on a circuit different from that to which the receiver is connected.
- Consult the dealer or an experienced radio/TV technician for help.

The device has been evaluated to meet general RF exposure requirements. The device can be used in portable exposure conditions without restriction

FAQ

**Q: How do I switch between wired and wireless modes?**

A: Use the toggle switch on the mouse to switch between wired and RF modes.


**Q: How can I adjust the DPI settings?**

A: Adjust DPI settings using the controls provided on the device.

**Q: What is Lift-off Distance (LOD) and how can I set it?**

A: LOD refers to the height at which the mouse stops tracking. Follow the steps in the manual to set the LOD value.

Documents / Resources

	<p><b><a href="#">PULSAR X2 v3 eS Medium Wireless Mouse</a></b> [pdf] User Manual PX23ES21, 2A2TU-PX23ES21, 2A2TUPX23ES21, X2 v3 eS Medium Wireless Mouse, X2, v3 e S Medium Wireless Mouse, Medium Wireless Mouse, Wireless Mouse, Mouse</p>
-----------------------------------------------------------------------------------	-------------------------------------------------------------------------------------------------------------------------------------------------------------------------------------------------------------------------------------------------------

References

- [User Manual](#)

[Manuals+](#), [Privacy Policy](#)

This website is an independent publication and is neither affiliated with nor endorsed by any of the trademark owners. The "Bluetooth®" word mark and logos are registered trademarks owned by Bluetooth SIG, Inc. The "Wi-Fi®" word mark and logos are registered trademarks owned by the Wi-Fi Alliance. Any use of these marks on this website does not imply any affiliation with or endorsement.