



PULSAR AWZ610 MP1 Relay Module Instruction Manual

[Home](#) » [Pulsar](#) » PULSAR AWZ610 MP1 Relay Module Instruction Manual 

Contents

- [1 PULSAR AWZ610 MP1 Relay Module](#)
- [2 Product Information](#)
- [3 Product Usage Instructions](#)
- [4 Technical description](#)
- [5 Module description](#)
- [6 Specifications](#)
- [7 Documents / Resources](#)
 - [7.1 References](#)
- [8 Related Posts](#)



PULSAR AWZ610 MP1 Relay Module



Product Information

Specifications

- Voltage of the relay's coil: 30 V DC / 48 V AC
- Power consumption: 45 mA max.
- Number of relays: 1
- Voltage of the relay's contacts: N/A (not specified)
- Tripping voltage T: N/A (not specified)
- Current of the relay's contacts: N/A (not specified)
- Operating temperature: N/A (not specified)
- Dimensions: N/A (not specified)
- Net/gross weight: N/A (not specified)
- Installation Declarations, warranty: N/A (not specified)

Product Usage Instructions

Technical Description

The MP1 (AWZ610) relay module is designed for use in low-voltage installations. It is primarily used for controlling and status indication in alarm or access control systems. The module can be utilized to control devices with high power consumption through the OC outputs of alarm systems. It also provides galvanic isolation of signals and power sources related to the module's outputs. The module includes two separate T+, T- inputs used for tripping relays based on high or low conditions.

Module Description

The PSU module consists of various components and connectors:

- [2] +IN- module's power input
- [4] LED optical indication:
 - L1 (red): ON – COM contacts, closed NO
 - L1 (red): OFF – COM contacts, closed NC

WEEE Label

According to the European Union WEEE Directive, waste electrical and electronic equipment should be disposed of separately from normal household waste.

FAQ (Frequently Asked Questions)

Q: What is the maximum power consumption of the MP1 relay module?

A: The maximum power consumption of the MP1 relay module is 45 mA.

Q: What is the voltage range for the relay's coil?

A: The voltage range for the relay's coil is 30 V DC / 48 V AC.

Q: How many relays are included in the MP1 module?

A: The MP1 module includes 1 relay.

Technical description

The MP1 (AWZ 610) relay module is to be used in low voltage installations. It is intended for controlling and status indication in e.g. alarm or access control systems. It may be used to control devices of high power consumption via OC outputs of alarm systems. Moreover, it ensures galvanic isolation of signals, power sources relating to the outputs of the module. It is equipped with two separate T+, T inputs used to trip relays with high or low condition.

Module description

Description of components and connectors of the PSU

Element no. [fig. 1]	Description
[1]	T-,T+ input of voltage controlling relay activity
[2]	+IN- module's power input
[3]	Relay contacts: COM – common relay clamp NO – normaly open relay clamp NC – normaly closed relay clamp
[4]	LED optical indication: L1 (red) ON: COM contacts, closed NO , OFF: COM contacts, closed NC

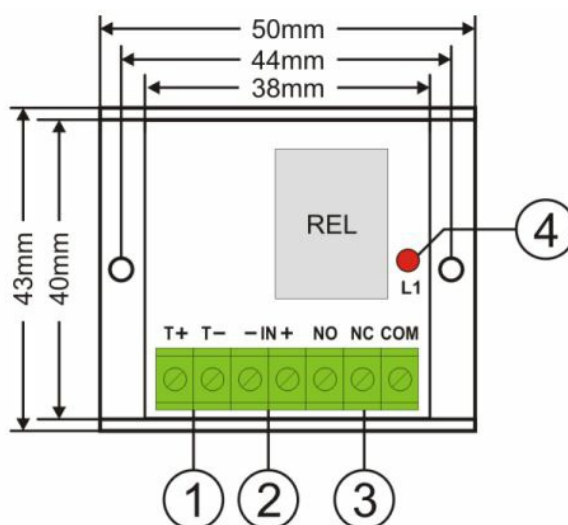


Fig.1. Drawing of the module.

Specifications

Voltage of the relay's coil	12 V (10 V DC ÷ 14 V DC)
Power consumption	45 mA max.
Number of relays	1
Voltage of the relay's contacts	30 V DC / 48 V AC
Tripping voltage T	T+ 5 V ÷ Unom. T- 0 V ÷ (Unom. – 5 V)
Current of the relay's contacts	2A max.
Operating temperature	-10°C ÷ +50°C
Dimensions	L=50, W=43, H=22 [mm, +/-2]
Net/gross weight	0,03 / 0,05 [kg]
Installation	Installation tape or installation bolt x 2
Declarations, warranty	CE, 2 years from production date
Notes	leads on connections: Ø 0,41 ÷ 1,63 (AWG 26-14), 0,2 ÷ 1 mm ²

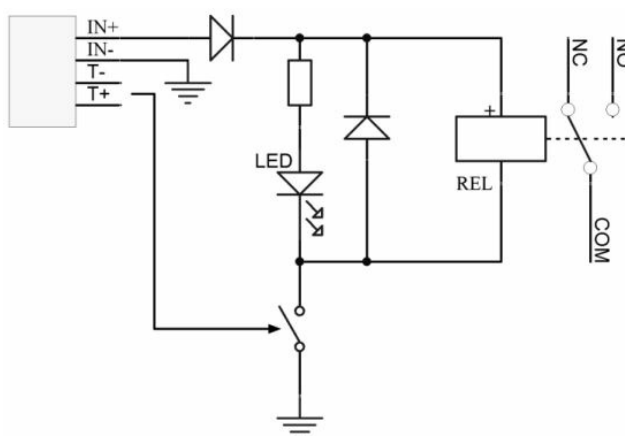


Fig.2. Electrical diagram.

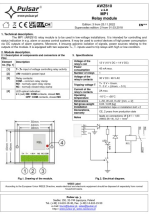
WEEE Label According to the European Union WEEE Directive, waste electrical and electronic equipment should be disposed of separately from normal household waste.

Pulsar sp. j.
Siedlec 150, 32-744 Łapczyca, Poland
Tel. (+48) 14-610-19-40, Fax. (+48) 14-610-19-50
e-mail: biuro@pulsar.pl, sales@pulsar.pl

<http://www.pulsar.pl>, www.zasilacze.pl

www.pulsar.pl

Documents / Resources

	<p>PULSAR AWZ610 MP1 Relay Module [pdf] Instruction Manual AWZ610, AWZ 514, AWZ610 MP1 Relay Module, AWZ610, MP1 Relay Module, Relay Module, Module</p>
-----------------------------------------------------------------------------------	-----------------------------------------------------------------------------------------------------------------------------------------------------------------------------

References

- [🏠 Strona główna](#)
- [🌐 Strona główna](#)
- [🏠 Strona główna](#)
- [User Manual](#)