

PSR GT5.0 Elite Dashboard Printed Sim Racing



PSR GT5.0 Elite Dashboard Printed Sim Racing Installation Guide

[Home](#) » [PSR](#) » PSR GT5.0 Elite Dashboard Printed Sim Racing Installation Guide 

Contents

- [1 PSR GT5.0 Elite Dashboard Printed Sim Racing](#)
- [2 Product Usage Instructions](#)
- [3 Frequently Asked Questions](#)
- [4 Safety information](#)
- [5 Mounting instructions](#)
- [6 SimHub Instructions](#)
- [7 SimHub configuration](#)
- [8 Troubleshooting](#)
- [9 Documents / Resources](#)
 - [9.1 References](#)



PSR GT5.0 Elite Dashboard Printed Sim Racing



Product Specifications

- Product Name: PSR GT5.0 Elite Dashboard
- Model: GT5.0
- Compatibility: Fanatec, Simagic, Simucube Pro/Sport/Ultimate, Mige 130ST, Moza R5/R9, Asetek Wheelbases

Product Usage Instructions

Safety Information

Before installing or using the PSR GT5.0 Elite Dashboard, please read and adhere to the safety information provided in the user manual to prevent any accidents or damage.

Mounting Instructions

Fanatec Wheelbases

Supplied Hardware: Refer to the installation guide for the specific hardware provided for mounting the dashboard to Fanatec wheelbases.

Installation: Follow the step-by-step instructions outlined in the installation guide to securely mount the dashboard to Fanatec wheelbases.

Simagic Wheelbases

Supplied Hardware: Check the included hardware list to identify the components needed for mounting on Simagic wheelbases.

Installation: Utilize the provided instructions to correctly attach the dashboard to Simagic wheelbases.

Frequently Asked Questions

- **Q: Is the PSR GT5.0 Elite Dashboard compatible with other wheelbases not listed in the manual?**
 - **A:** The dashboard is designed for use with the specified wheelbases for optimal performance.

Compatibility with other wheelbases is not guaranteed and may result in functionality issues.

- **Q: Can the dashboard be customized with additional accessories?**

- **A:** While the dashboard is designed to work seamlessly with the provided hardware, customization with additional accessories may be possible but could void warranty or impact performance.

Safety information

Thank you for your trust in our product. Please refer to the manual whilst installing and configuring the PSR GT5.0 Elite Dashboard. If you have any questions please feel free to contact us at: support@printedsimracing.com
The PSR GT5.0 Elite Dashboard is developed for sim racers of all levels. SimHub software is required to be used with the dashboard.

Please note the following safety aspects:

- Do not expose the product to water or humidity to avoid the risk of water damage.
- Only use the product indoors, do not use/store the product outside of room temperature (20C). Not more than 35C.
- Keep the product out of direct sunlight
- The product has strong magnets inside, be careful when installing the dashboard.
- Be careful with sharp metal objects, they will be attracted to the product which can cause damage or injury.
- Do not keep the product in a warm temperature location such as an unattended car in the sun.

Do not attempt to disassemble the dashboard, this will void the warranty.

Mounting instructions

Fanatec wheelbases

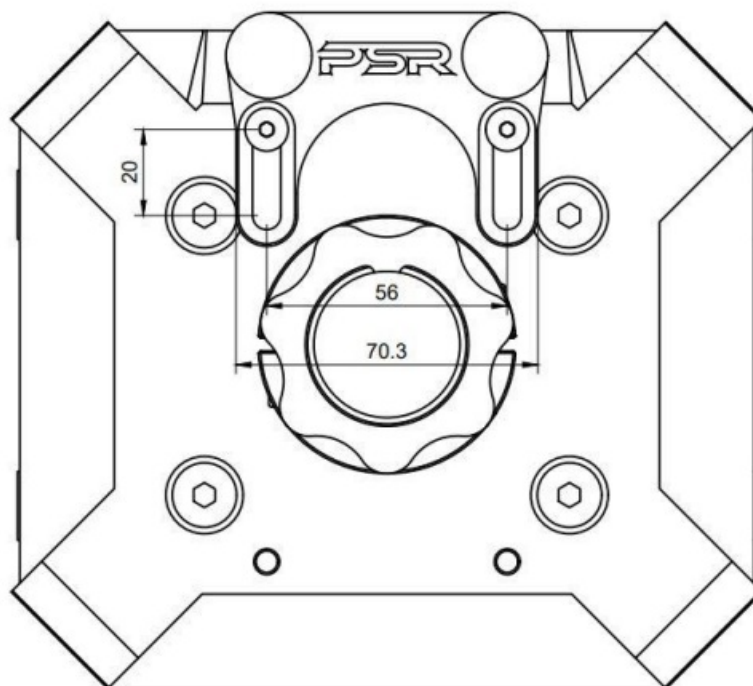


Figure 1: Fanatec mount compatible wheelbases: DD1, DD2, CSL-DD, CSL-DD Pro, CS-DD, CS-DD+, CSW, CSL Elite.

Supplied hardware:

- PSR GT5.0 Elite Dashboard Fanatec mount
- Countersunk hex m6 x 14mm (2x)

Installation

To mount the “PSR GT5.0 Elite Dashboard Fanatec mount” the two threaded holes above the wheelbase will be used to secure the mount in place.

1. Hold the mount into position and partially thread the proved hardware into place with and 4mm Allen key.
2. Magnetically secure the dashboard onto the mounting solution.
3. Adjust the hight of the dashboard placement to your need using the slot slotted whole in the mounting solution.
4. Fully tighten the mount into its final position, making sure that the bolt is fully seated.
5. Move onto the “SimHub Instructions”

Simagic Alpha wheelbases

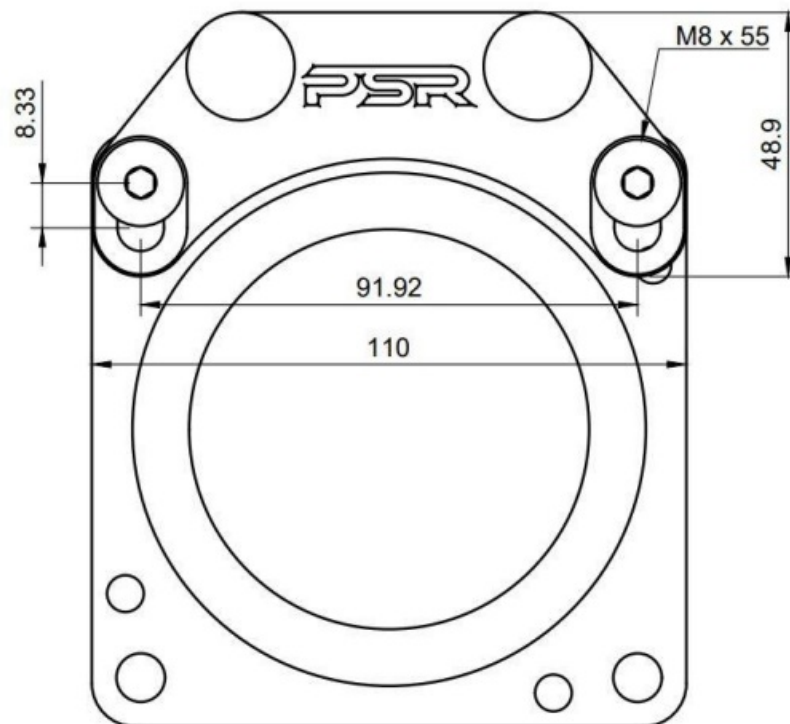


Figure 2: Simagic mount compatible wheelbases: Alpha, Alpha mini, Alpha U

Supplied hardware:

- PSR GT5.0 Elite Dashboard Simagic mount
- Countersunk hex m8 x 45mm (2x)

Installation

To mount the “PSR GT5.0 Elite Dashboard Simagic mount” the two-mounting hole at the top of the wheelbases will be used to secure the mount in place.

1. Hold the mount into position and partially thread the proved hardware into place with and 5mm Allen key.
2. Magnetically secure the dashboard onto the mounting solution.
3. Adjust the hight of the dashboard placement to your need using the slot slotted whole in the mounting solution.
4. Fully tighten the mount into its final position, making sure that the bolt is fully seated.
5. Move onto the “SimHub Instructions

Simucube Pro/Sport wheelbases

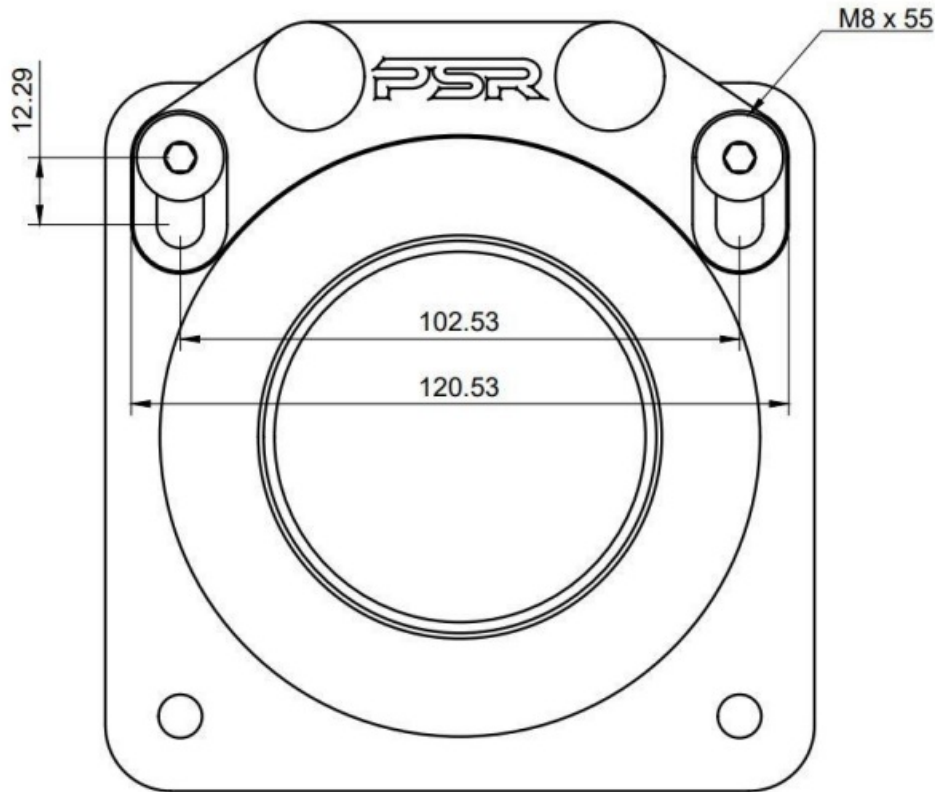


Figure 3: Simucube mount compatible wheelbases: Pro/Sport

Supplied hardware:

- PSR GT5.0 Elite Dashboard Simucube Pro/Sport mount
- Countersunk hex m8 x 45mm (2x)

Installation

To mount the “PSR GT5.0 Elite Dashboard Simucube Pro/Sport mount” the two-mounting hole at the top of the wheelbases will be used to secure the mount in place.

1. Hold the mount into position and partially thread the proved hardware into place with and 5mm Allen key.
2. Magnetically secure the dashboard onto the mounting solution.
3. Adjust the hight of the dashboard placement to your need using the slot slotted whole in the mounting solution.
4. Fully tighten the mount into its final position, making sure that the bolt is fully seated.
5. Move onto the “SimHub Instructions”

Simucube Ultimate wheelbase

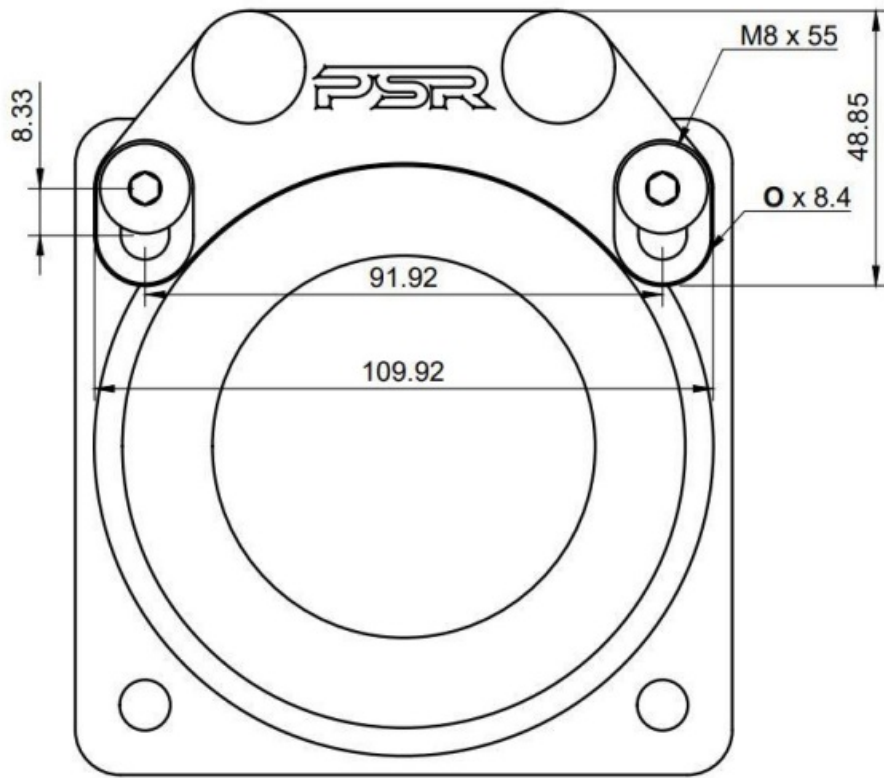


Figure 4: Simucube mount compatible wheelbases: Ultimate

Supplied hardware:

- PSR GT5.0 Elite Dashboard Simucube Ultimate mount
- Countersunk hex m8 x 45mm (2x)

Installation

To mount the “PSR GT5.0 Elite Dashboard Simucube Ultimate mount” the two-mounting hole at the top of the wheelbases will be used to secure the mount in place.

1. Hold the mount into position and partially thread the proved hardware into place with and 5mm Allen key. Make sure to install the included M8 washer is installed behind the 3D print
2. Magnetically secure the dashboard onto the mounting solution.
3. Adjust the hight of the dashboard placement to your need using the slot slotted whole in the mounting solution.
4. Fully tighten the mount into its final position, making sure that the bolt is fully seated.
5. Move onto the “SimHub Instructions”

Mige 130ST (VRS DFP, OSW, Sim-plicity SW20) wheelbases

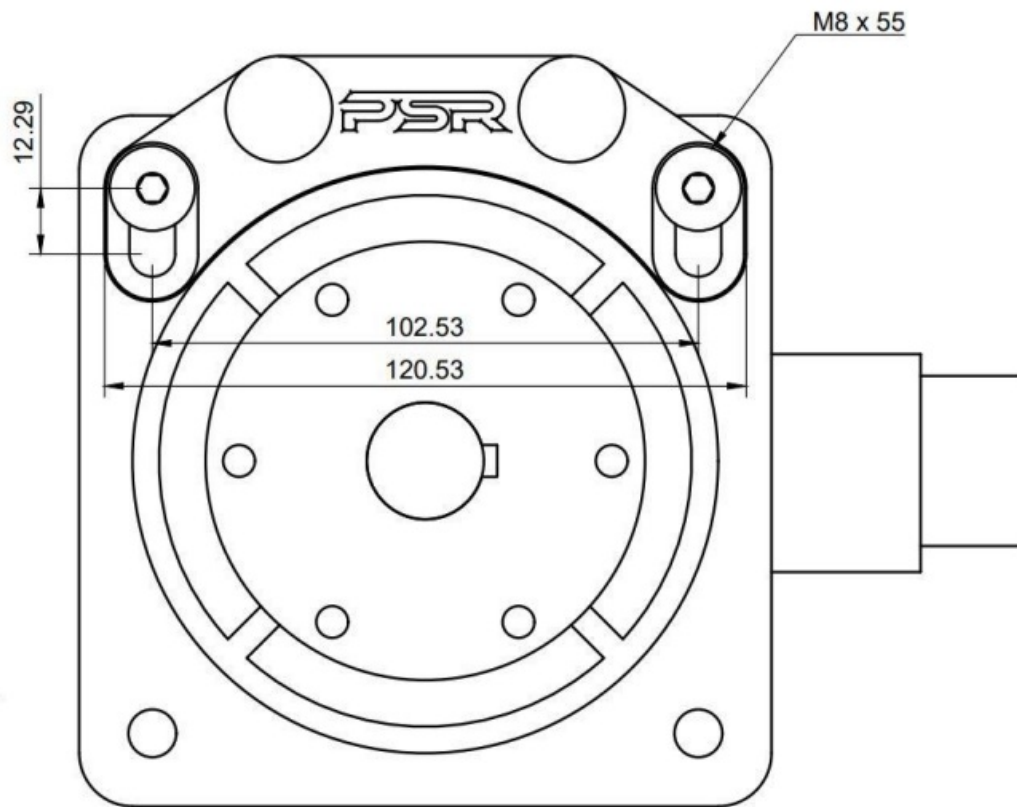


Figure 5: Mige 130ST mount compatible wheelbases: VRS DFP, OSW, Sim-plicity SW20

Supplied hardware:

- PSR GT5.0 Elite Dashboard Mige 130ST mount
- Countersunk hex m8 x 45mm (2x)

Installation

To mount the “PSR GT5.0 Elite Dashboard Mige 130ST mount” the two-mounting hole at the top of the wheelbases will be used to secure the mount in place.

1. Hold the mount into position and partially thread the proved hardware into place with and 5mm Allen key.
2. Magnetically secure the dashboard onto the mounting solution.
3. Adjust the hight of the dashboard placement to your need using the slot slotted whole in the mounting solution.
4. Fully tighten the mount into its final position, making sure that the bolt is fully seated.
5. Move onto the “SimHub Instruction

Moza R5/R9 wheelbases

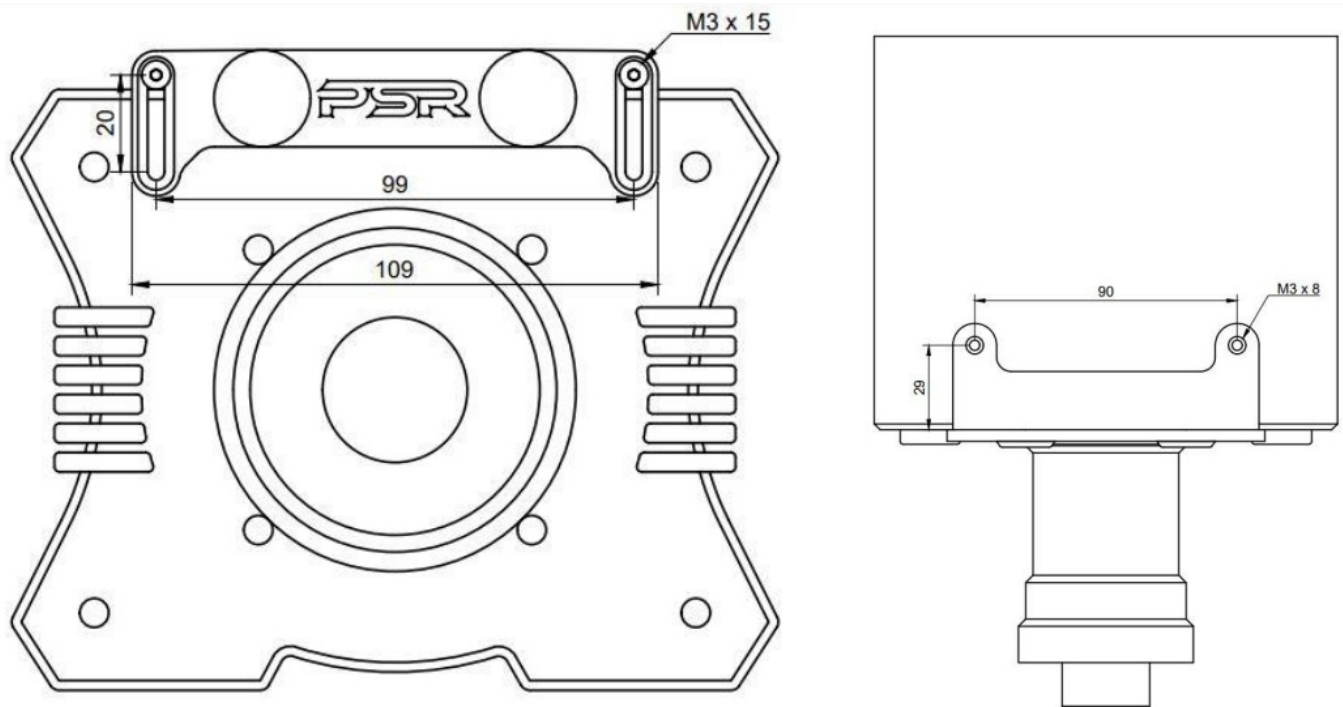


Figure 6: Moza mount compatible wheelbases: R5/R9

Supplied hardware:

- PSR GT5.0 Elite Dashboard Moza R5/R9 mount
- Countersunk hex m3 x 15mm (2x)

Installation

To mount the “PSR GT5.0 Elite Dashboard Moza R5/R9 mount” the two-mounting hole at the top of the wheelbases will be used to secure the mount in place.

1. Hold the mount into position and partially thread the proved hardware into place with and 2mm Allen key.
2. Magnetically secure the dashboard onto the mounting solution.
3. Adjust the hight of the dashboard placement to your need using the slot slotted whole in the mounting solution.
4. Fully tighten the mount into its final position, making sure that the bolt is fully seated.
5. Move onto the “SimHub Instructions

Asetek Wheelbases

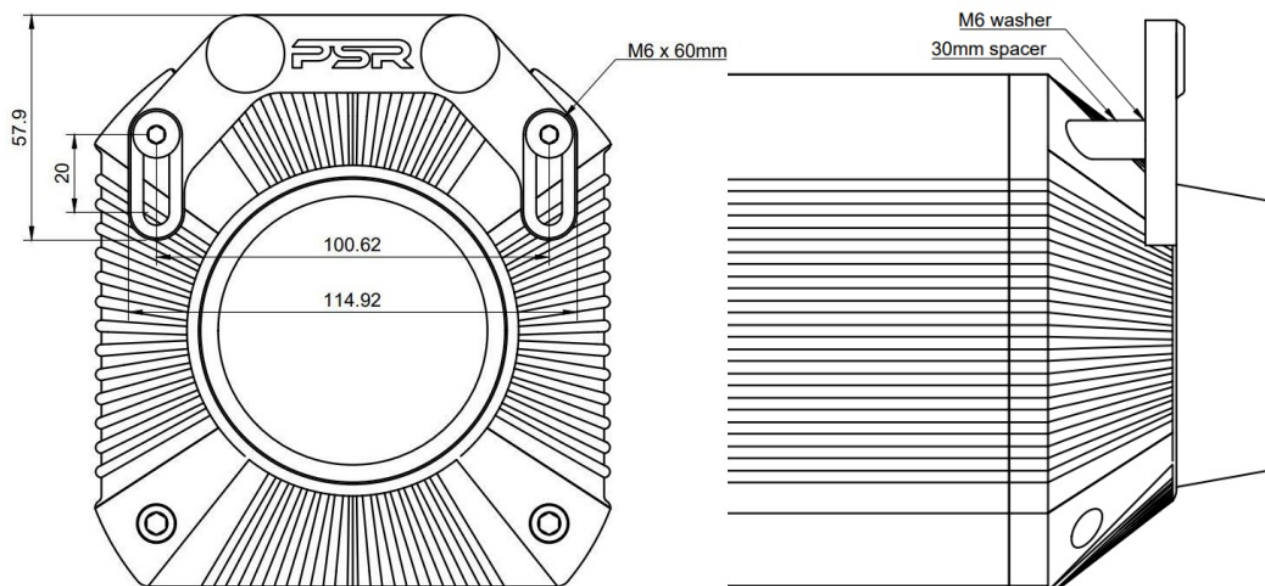


Figure 7: Asetek mount compatible wheelbases: Forte, Invicta, La Prima

Supplied hardware:

- PSR GT5.0 Elite Dashboard Asetek mount
- Countersunk hex m6 x 15mm (2x)
- 30mm spacer (2x)
- M6 washer (2x)
- 60mm countersunk M6 bolt (2x)

Installation

To mount the “PSR GT5.0 Elite Dashboard Asetek mount” the two-mounting hole at the top of the wheelbases will be used to secure the mount in place.

1. Undo the two M6 x 20 hex bolts at the top of the wheelbase.
2. Hold the mount into position and partially thread the proved hardware in order of; 1: M6 x 60, 2: 3D printed mount, 3: M6 washer, 4: 30mm Spacer, into the wheelbase.
3. Magnetically secure the dashboard onto the mounting solution.
4. Adjust the hight of the dashboard placement to your need using the slot slotted whole in the mounting solution.
5. Fully tighten the mount into its final position, making sure that the bolt is fully seated.
6. Move onto the “SimHub Instructions”

SimHub Instructions

SimHub Software installation

Step 1:

Download and install the latest version of SimHub:

- <https://www.simhubdash.com/>

Step 2:

For the best experience, high refresh rates and low latency please get a SimHub license:

- <https://www.simhubdash.com/get-a-license/>

Step 3:

Open SimHub and select “Load my license file” to activate the license.

Step 4:

Download and install the latest VoCore Display driver:

- <https://www.simhubdash.com/devices-driver-installation/>

SimHub configuration

Step 5:

Go to the devices section, select “Add a new device” and look for the “PSR GT5.0 Elite dashboard”. Select the dashboard and press “ok”. (Both the square and round edition use this device name)

Note: Older versions of SimHub may not show the PSR GT5.0 Elite Dashboard. Either update to the latest version of SimHub or head over to our website [printedsimracing.com](https://www.printedsimracing.com) -> “Downloads” to download the device profile. In SimHub, select “Import device” and click on the downloaded file.

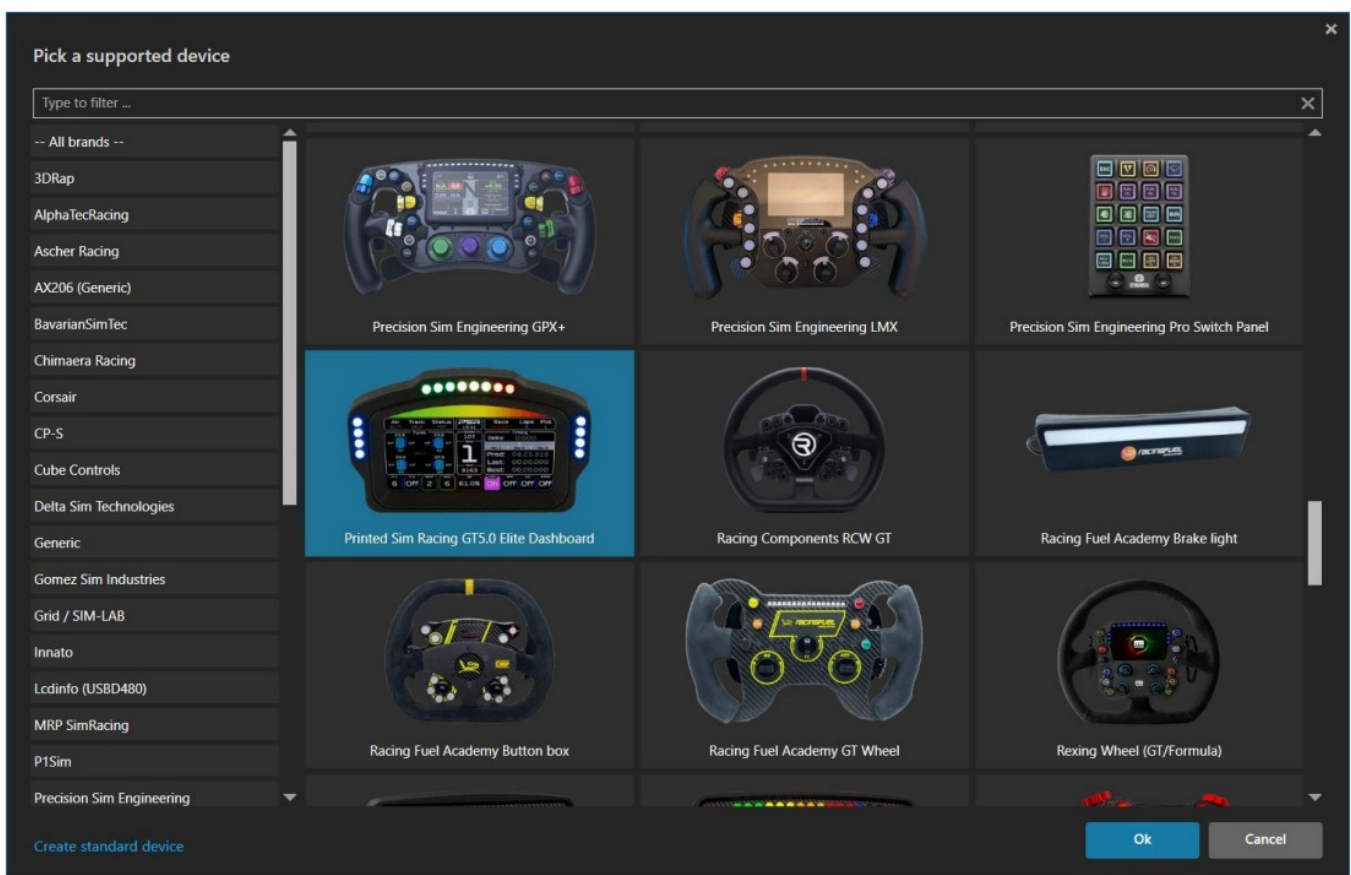


Figure 7: selecting the PSR GT5.0 Elite Dashboard in SimHub

Step 6:

In the “LCD” menu below you can change settings such as LCD brightness, idle behaviour and you can change the dashboard template. If you wish to use our template, head over to:

<https://printedsimracing.com/pages/downloads> Instructions on how to install custom templates are listed below under “Optional SimHub configuration”. On our website we have two templates:

1. A remix from the Lovely Dashboard optimised for the dashboard
2. Our own template with features such delta, pit timer, stint timer and much more. Of course, you can also download any other SimHub template from the internet.

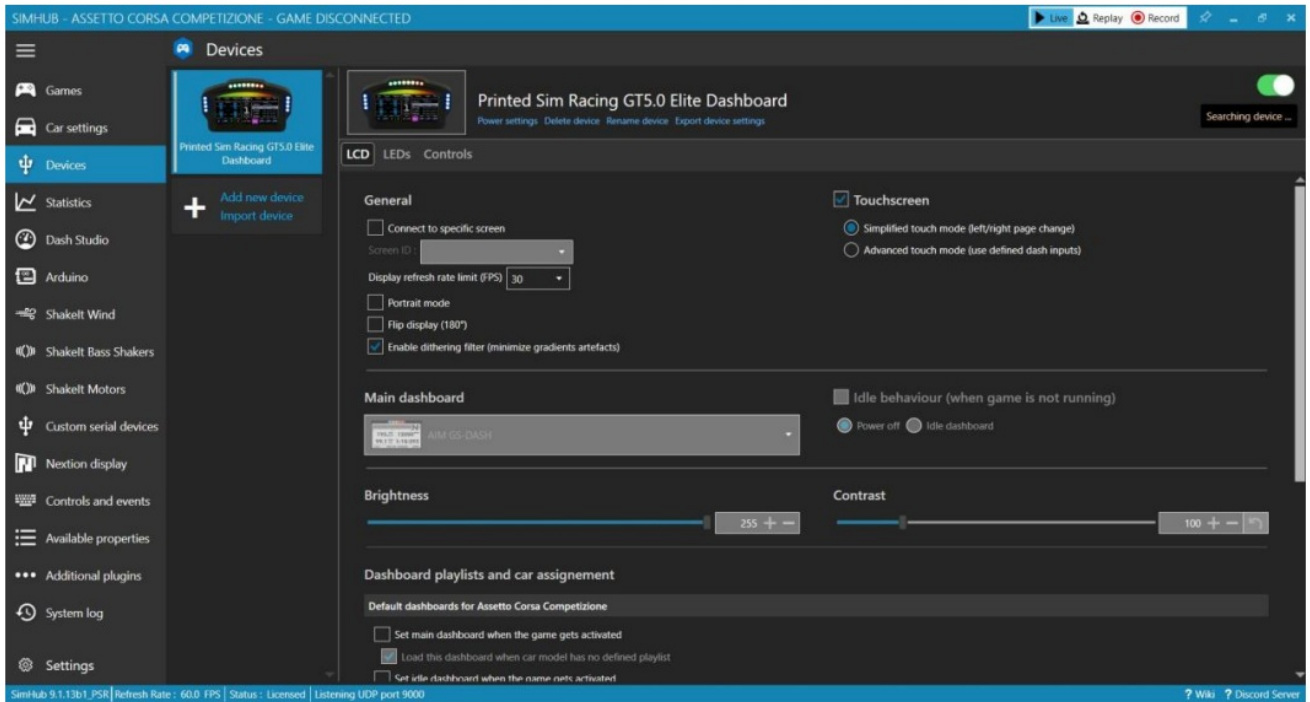
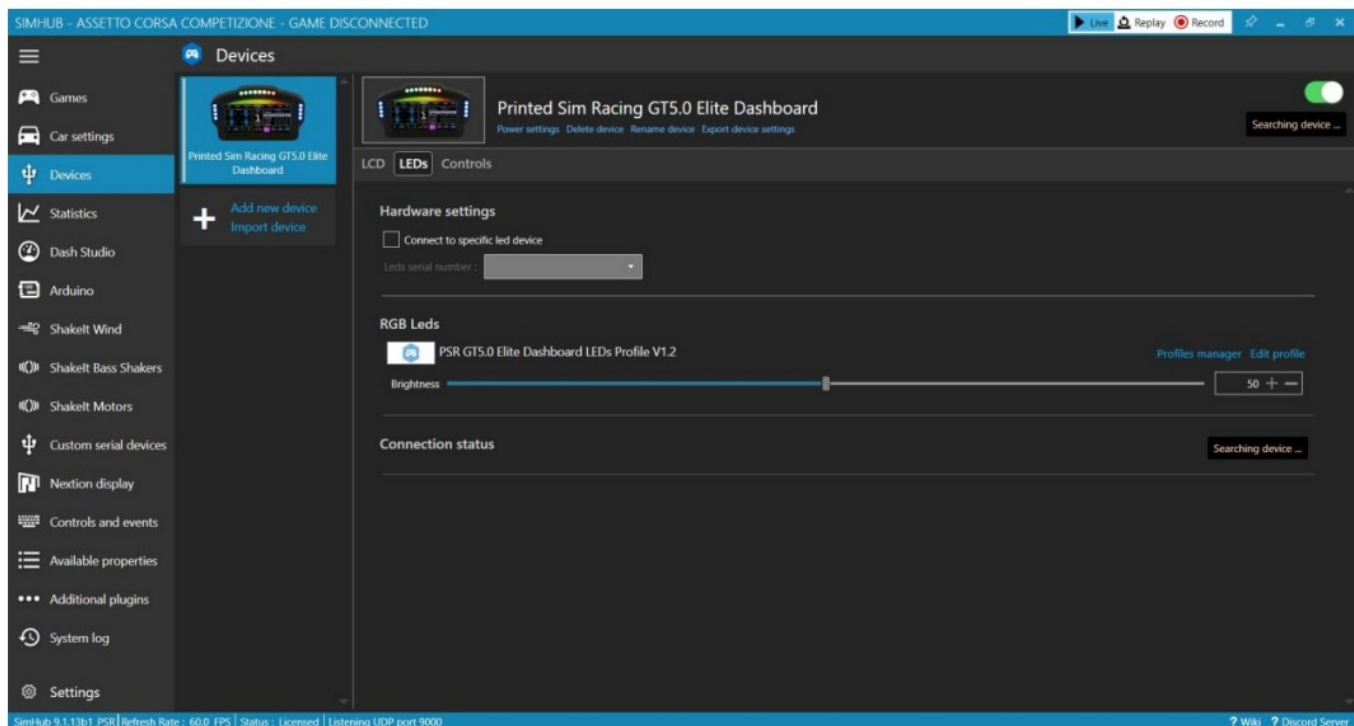


Figure 9: LCD menu in SimHub

Step 7:

In the “LED” menu you can change settings such as LED brightness and the LED profile.



The LED profile will determine the LED behaviour.

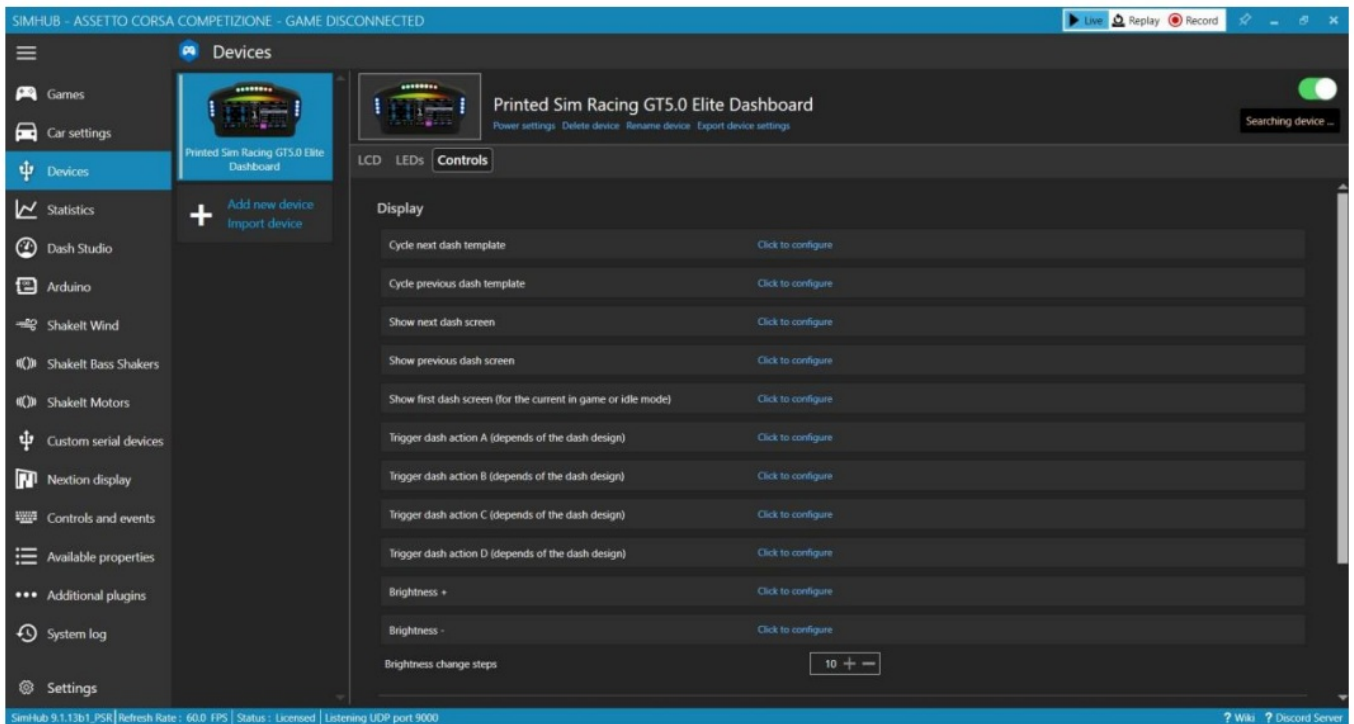
By default, the top LEDs are to show the RPM. The side LEDs will show traction control and ABS. The PSR LED profile includes many more features, such as spotter, flags, damage indicators and much more. If you wish to customise the LED behaviour, press on “edit profile”. In the next menu you can select the functions that you want the LEDs to show. More information below under Optional SimHub configuration. If you already have an LED profile in use, select “Profiles manager” to make sure that the correct LED profile is selected for the PSR GT5.0 Elite Dashboard. On our website <https://printedsimracing.com/pages/downloads> you can download the LED profile for the dashboard in case you can’t see it or want to go back to default settings.

Note:

We recommend to use an LED brightness of around 10-40%. A function may not be visible because another function is overwriting the function which you want to use. Select the function that you want and drag it on top of the function which is overwriting the desired function.

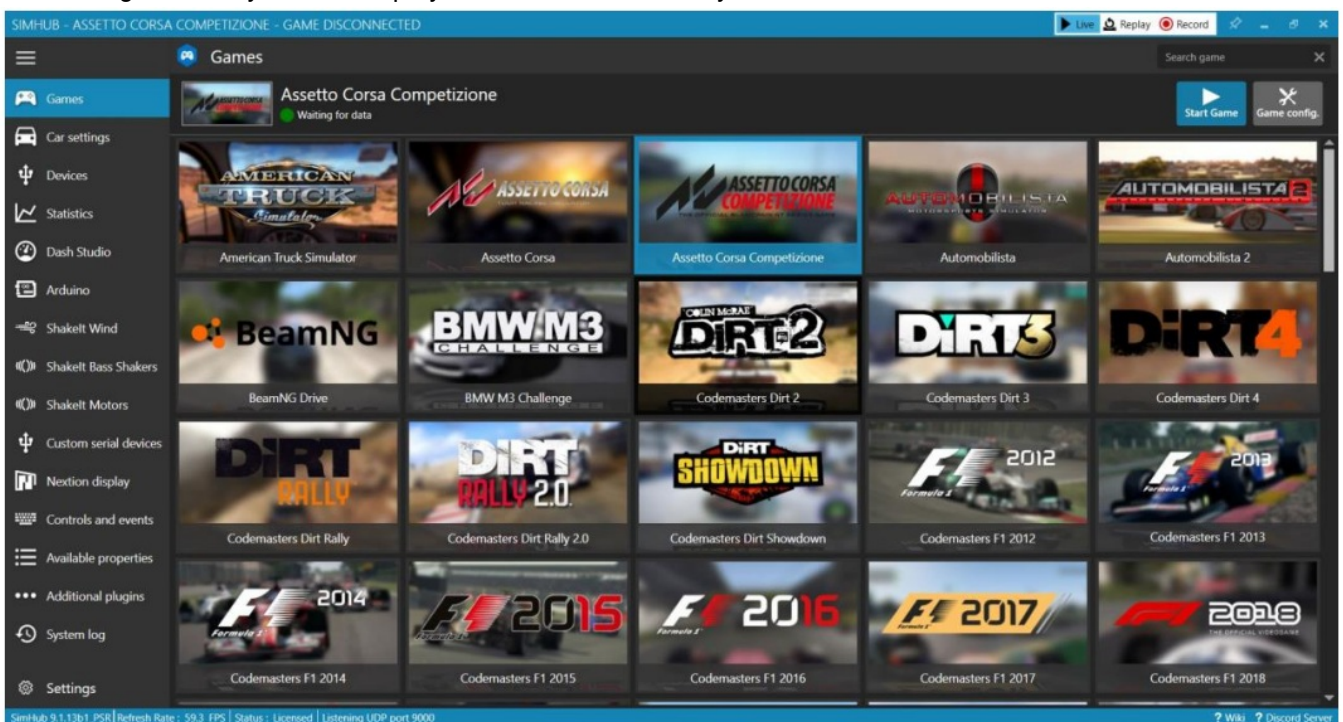
Step 8:

In the “Controls” menu you can program buttons or the touchscreen to change a function on the screen. For example, to cycle the dashboard template, you can select “cycle next dash template” and assign the touchscreen of the LCD to perform this action.



Step 9:

Select the game that you want to play in the Games tab and you are all set!



Optional SimHub configuration:

Adding a custom LED profile To add a custom LED profile, open SimHub, Select Devices, PSR GT5.0 Elite Dashboard and go to the LED menu. Select “Profiles manager” and press on “New profile” to make your own profile from scratch or press “Import profile” to add a custom profile.

Note: We recommend to use an LED brightness of around 10-40%.

Changing the LED behaviour

To change the LED behaviour, open SimHub, Select Devices, PSR GT5.0 Elite Dashboard and go to the LED menu. Select "Edit profile" and expand the two "EFFECT GROUP" tabs. Each tab can be expanded further. With the toggle switches on the right you can enable/disable the functions. With the gridded dots on the right you can reposition the functions, the higher the function on the list the more priority. For example, if the flag function is placed above the traction control function. You may experience traction control but this won't be shown on the dashboard because there is a yellow flag on track.

Adding custom dashboard templates


Custom dashboard templates can be downloaded and loaded in SimHub easily. We recommend <https://www.racedepartment.com/> and <https://github.com/cdemetriadis/lovely-dashboard> for custom dashboard templates. Close down SimHub, download the custom dashboard file and run the file to install the dashboard template to SimHub. Alternatively, you can select "Import dashboard" under "Dash Studio". In Dash Studio you can find all your dashboard templates. To select a template for the PSR GT5.0 Elite Dashboard, select "start" on a dashboard template and press "Show on USB displays Printed Sim Racing GT5.0 Elite Dashboard".

Troubleshooting





Please note the following if you are having connection issues with the PSR GT5.0 Elite Dashboard:

- Update to the latest version of SimHub
- Use a power and data USB cable.
- Avoid using USB hubs or front panel IO PC case ports. Motherboard USB ports are preferred.
- Close down all software other than SimHub.
- Make sure that the USB power switch is in the correct position. If you are using the top USB C port make sure to move the switch in the top position and vice versa. If you need more support please feel free to contact us at: support@printedsimracing.com

Documents / Resources

	<p>PSR GT5.0 Elite Dashboard Printed Sim Racing [pdf] Installation Guide GT5.0 Elite Dashboard Printed Sim Racing, GT5.0, Elite Dashboard Printed Sim Racing, Dashboard Printed Sim Racing, Printed Sim Racing, Sim Racing, Racing</p>
---	--

References

-  [Printed Sim Racing - Sim Racing Hardware - SimHub](#)
-  [GitHub - cdemetriadis/lovely-dashboard: A multifunctional feature packed SimHub Dashboard \(DDU\) and a matching Stream Overlay.](#)
-  [PSR - Downloads - SimHub - Instructions – Printed Sim Racing](#)
-  [Articles | OverTake \(Formerly RaceDepartment\)](#)

- [!\[\]\(7e19807c61da14f515588e95cd49886c_img.jpg\) SimHub, DIY Sim Racing Dash and Hardware – Bring Your Sim Racing Rig To Life](#)
- [!\[\]\(8ff9e60a4b0560d7ec99179ef4779d9e_img.jpg\) Devices driver installation – SimHub, DIY Sim Racing Dash and Hardware](#)
- [!\[\]\(ab9b69bf5753a01c76b30af859454360_img.jpg\) Get a license – SimHub, DIY Sim Racing Dash and Hardware](#)
- [User Manual](#)

[Manuals+](#), [Privacy Policy](#)

This website is an independent publication and is neither affiliated with nor endorsed by any of the trademark owners. The "Bluetooth®" word mark and logos are registered trademarks owned by Bluetooth SIG, Inc. The "Wi-Fi®" word mark and logos are registered trademarks owned by the Wi-Fi Alliance. Any use of these marks on this website does not imply any affiliation with or endorsement.