



PRT Qutie Portable Label Maker Machine User Guide

[Home](#) » [PRT](#) » PRT Qutie Portable Label Maker Machine User Guide



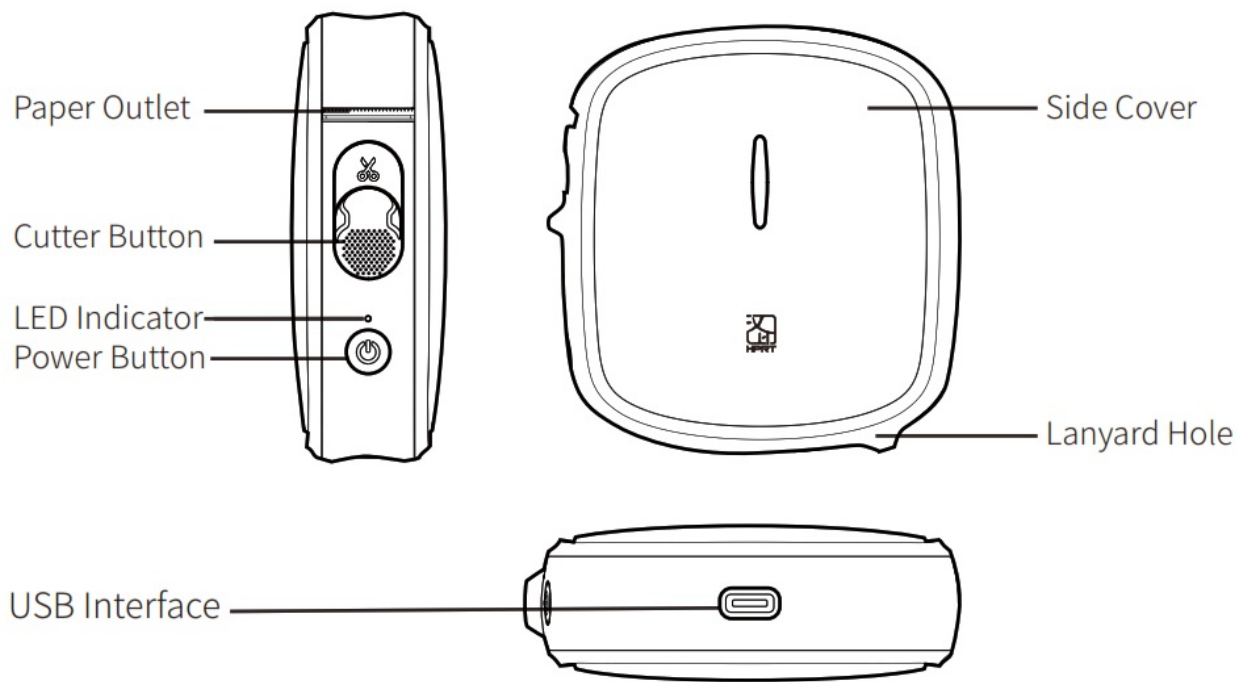
Qutie Portable Label Maker Machine User Guide

Contents [[hide](#)]

- [1 Product Introduction](#)
- [2 Button Operation](#)
- [3 Connection and Printing](#)
- [4 Battery Charging](#)
- [5 FCC WARNING](#)
- [6 Documents / Resources](#)
 - [6.1 References](#)
- [7 Related Posts](#)

Product Introduction

Appearance and Components



Packing List



Printer



Lanyard



USB cable



Quick Start Guide

LED Indicator Status

● Red LED Error Status

- ON: Error (Paper jam/Paper end/Cover opened)
- Quick Flash: TPH is over temperature
- Slow Flash: Low power

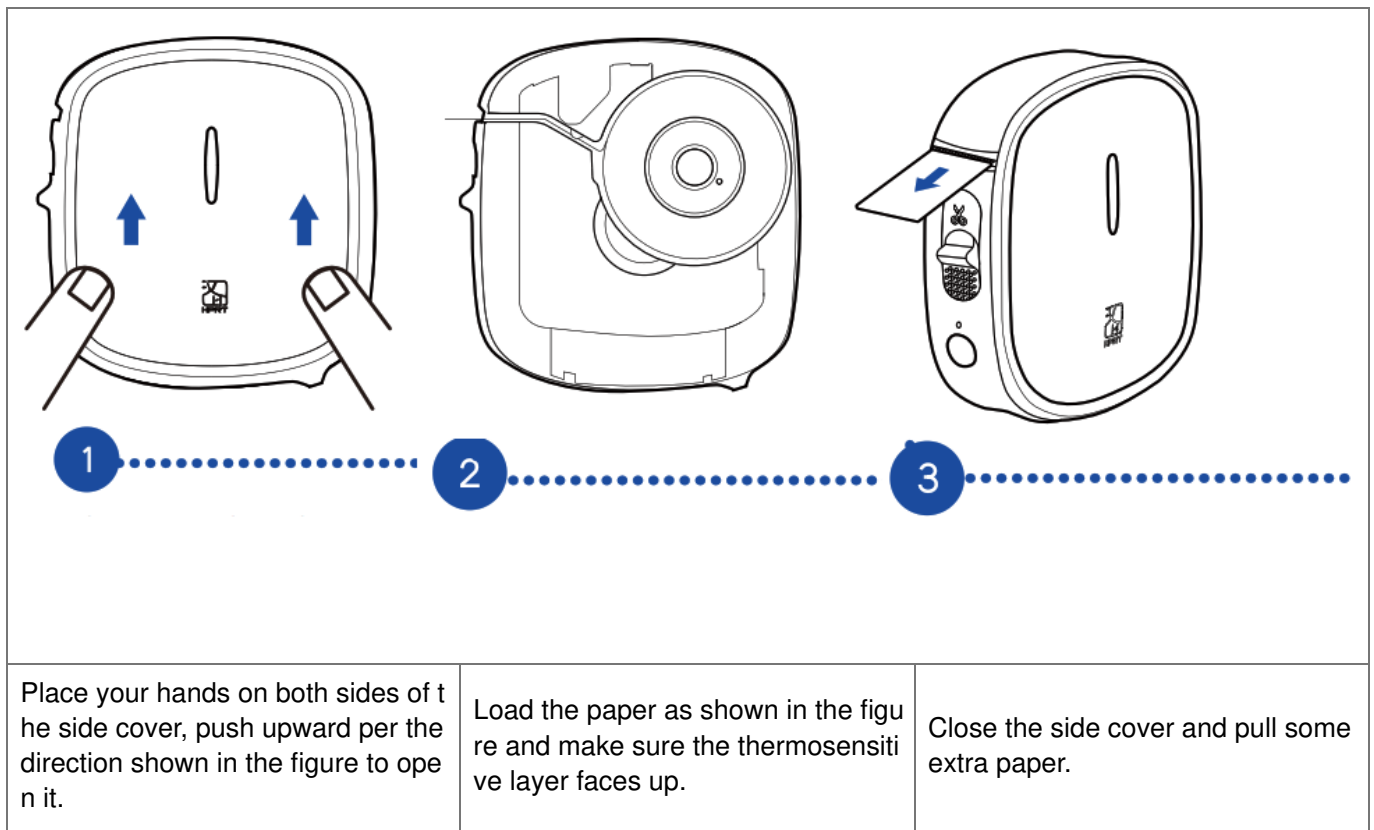
● Green LED Basic Status

- ON: Charging finished/Printer is ready
- Slow Flash: Charging

Button Operation

1. Hold down the power button for a few seconds: Turn on/off the printer
2. Press the power button: Position and calibrate the location of thermal label paper and heating line

Paper Loading



App Download

Scan the QR code to download App.



<http://yt.hpdt.com/GL>

Connection and Printing

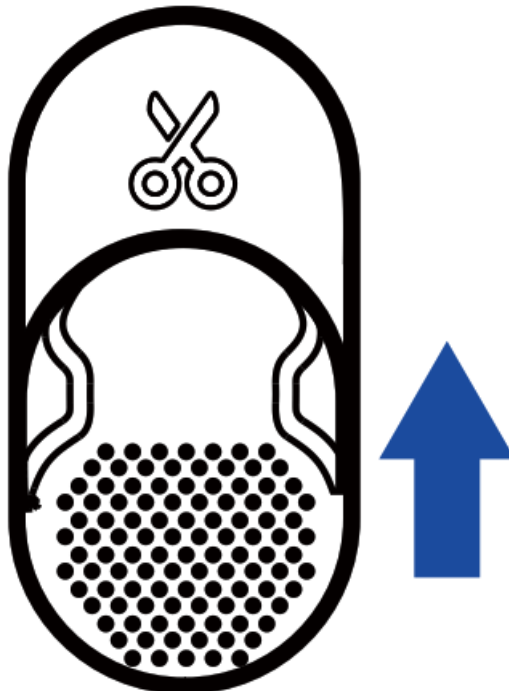
1. Turn on Bluetooth of mobile phone, then open App, select "Qutie" in the device list. Click "Search device" and find "Qutie-XXXX", click it to connect.



2. Edit the label as need, and then click “Print” after editing.



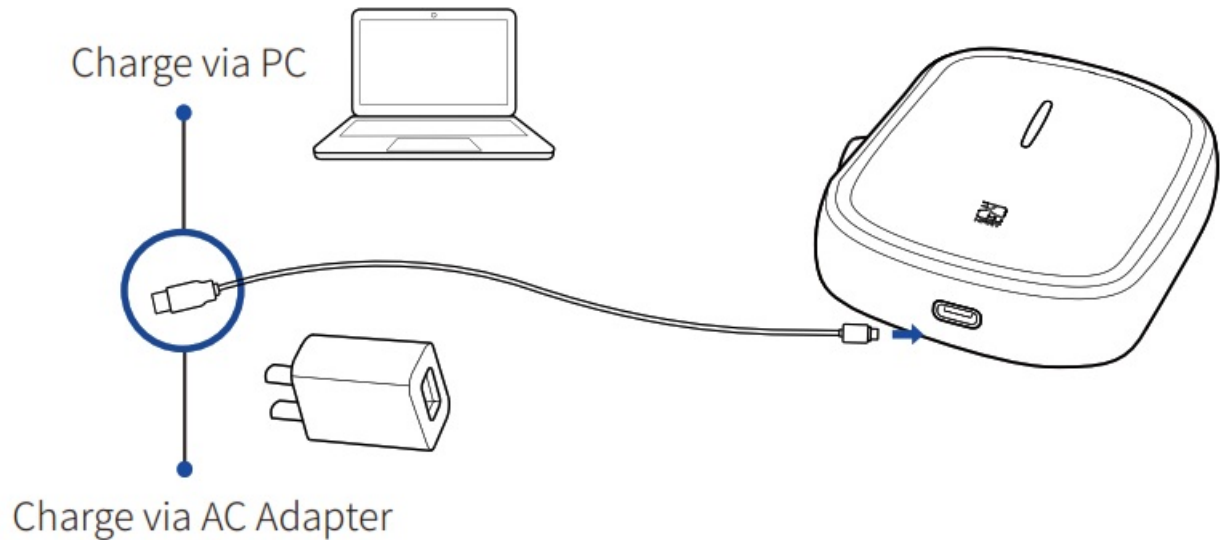
3. Push the cutter button to manually cut the paper.



Note: App operation shall be subject to the latest version.

Battery Charging

When the battery power is low, the red LED indicator will flash slowly. Please charge it by the exclusive USB cable in time. If you continue printing, it may power off automatically.



Note: The printer can be charged via computer USB port or AC adapter. Please note that the AC adapter is not supplied.

FCC WARNING

This device complies with part 15 of the FCC Rules. Operation is subject to the following two conditions:

1. This device may not cause harmful interference, and
2. This device must accept any interference received, including interference that may cause undesired operation.

Any changes or modifications not expressly approved by the party responsible for compliance could void the user's authority to operate the equipment.

NOTE: This equipment has been tested and found to comply with the limits for a Class B digital device, pursuant to Part 15 of the FCC Rules. These limits are designed to provide reasonable protection against harmful interference in a residential installation. This equipment generates, uses and can radiate radio frequency energy and, if not installed and used in accordance with the instructions, may cause harmful interference to radio communications. However, there is no guarantee that interference will not occur in a particular installation.

If this equipment does cause harmful interference to radio or television reception, which can be determined by turning the equipment off and on, the user is encouraged to try to correct the interference by one or more of the following measures:

- Reorient or relocate the receiving antenna.
- Increase the separation between the equipment and receiver.
- Connect the equipment into an outlet on a circuit different from that to which the receiver is connected.
- Consult the dealer or an experienced radio/TV technician for help.

To maintain compliance with FCC's RF Exposure guidelines, This equipment should be installed and operated with minimum distance between 20cm the radiator your body: Use only the supplied antenna.




Note: All the drawings of product and accessories in the manual are for reference only, please subject to the actual product.



Manufacturer: Xiamen Hanin Electronic Technology Co., Ltd.
Address: No.96, Rongyuan Road, Tong'an District, Xiamen, China 361100
E-mail: support@hpert.com
Web: www.hpert.com

Documents / Resources

 <small>Quite</small>	<p>PRT Quite Portable Label Maker Machine [pdf] User Guide Quite, Portable Label Maker Machine, Quite Portable Label Maker Machine, Label Maker Machine, Maker Machine</p>
---	--

References

- [HPRT | Printer, Label Printer, QR Code Scanner Manufacturer](#)