



Proxess Mini-IQ Mini Controller and Reader User Guide

[Home](#) » [Proxess](#) » Proxess Mini-IQ Mini Controller and Reader User Guide 

Contents

- [1 Proxess Mini-IQ Mini Controller and Reader](#)
- [2 About the Contents](#)
- [3 Data Sheet Location: Mini-IQ](#)
- [4 Proxess Mini-IQ PX Series Mini-Controller](#)
- [5 FEATURES](#)
- [6 SYSTEM SPECIFICATIONS](#)
- [7 SAMPLE DOOR DEVICE LAYOUT AND CONNECTIVITY](#)
- [8 LoxIQ™ vs ProxessIQ™ Matrix](#)
- [9 Operations Manual Location: LoxIQ™](#)
- [10 Mini-IQ Wiring Diagram](#)
- [11 Documents / Resources](#)
- [12 Related Posts](#)



Proxess Mini-IQ Mini Controller and Reader



Mini-Controller & Reader

Supplemental selection, installation, and configuration guidance

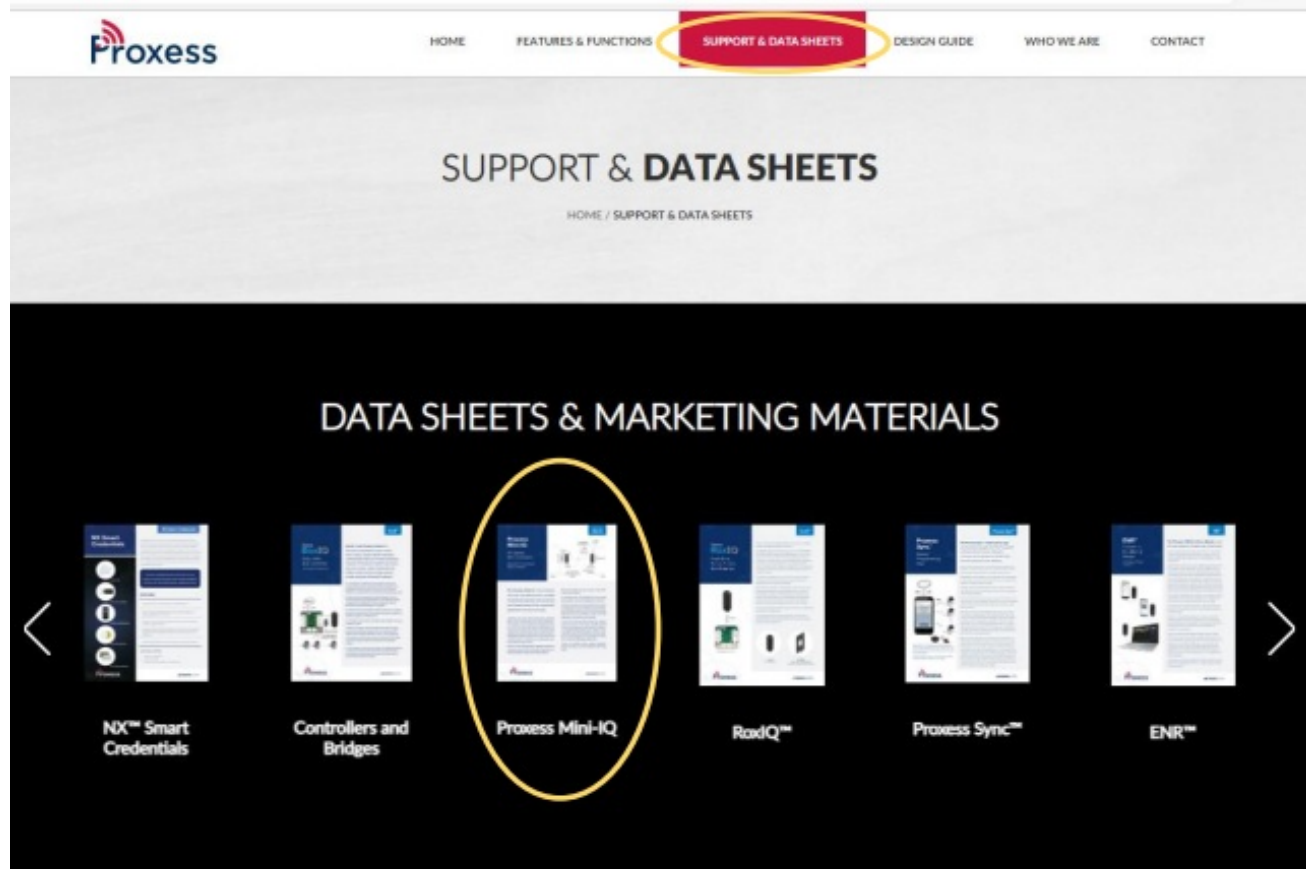
About the Contents

This supplemental contains information to assist the installer in the selection, installation, configuration and maintenance to the Proxess Mini-IQ (mini-controller & reader pair). The first four (4) pages is the Mini-IQ data sheet from the Proxess website's "Support & Data Sheets" tab. The following page is a screenshot of the "Design Guide" tab on the Proxess website and shows a comprehensive selection guidance table, between LoxIQ™ (our phone-based access control solution) and ProxessIQ™ (our online, enterprise-class, PC-based access control system). The next page is a screenshot of the "Support & Data Sheets" tab on the Proxess website and shows the icon to click on to open the LoxIQ™ software user manual. The next page is the wiring diagram for the Mini-IQ. The final group of drawings are sample door device and wiring diagrams for some of the typical doors the Mini-IQ will secure:

- Typical storefront door with a mechanical flip-bolt
- Including retrofit/upgrade guidance
- Perimeter panic-bar door
- Vehicle gate operator

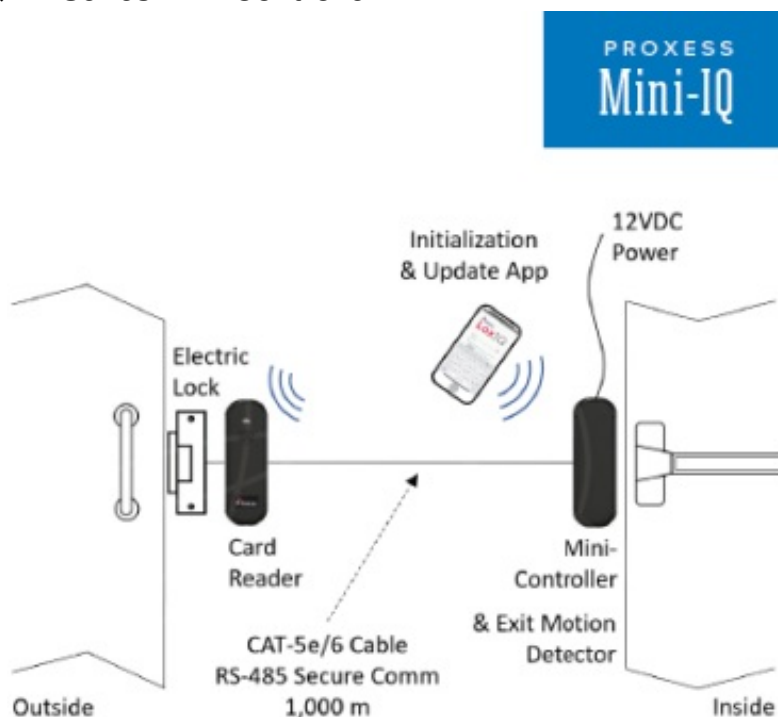
For further info contact Proxess Support to schedule training.

Data Sheet Location: Mini-IQ



VIDEO TUTORIALS

Proxess Mini-IQ PX Series Mini-Controller



Bluetooth™, On-Demand Edge Controller

The Proxess Mini-IQ is the simplest and most cost-effective door controller to install and operate, and rounds out the Proxess product line, supporting applications at every door type; Storefronts, panic exits, vehicle parking

gates, pedestrian gates, mortise, cylindrical and more. Only low voltage power is needed, so the only wiring you'll need at the door is to connect the Proxess high security card/mobile phone readers and an electric strike (mag, lock, etc.). Proxess' Industry-first built-in, request-to-exit motion detector option ensures Proxess is providing the lowest cost product to secure a door and an unlimited number of credentials can be supported by each Proxess Mini-IQ edge controller. Built to our 'less training required' standard, a simple click of the Sync button from the mobile phone app (on both Loxion & ProxessIQn) configures each Proxess Mini-IQ.

- When more stringent security is required, an exit reader can also be connected.
- An unlimited number of Proxess Mini-IQs can be added to your system, so you won't outgrow your investment.
- Security is paramount and Proxess delivers with encrypted mobile phones and our Network-on-Card technology. This greatly reduces the cost of access point design, equipment prices and installation. All this technology keeps your cost low and your security high.
- To that end, the Proxess Mini-IQ keeps the controller electronics securely on the inside, preventing network and lock relay tampering. Proxess also has an option for an integrated Request-to-Exit motion detector, further lowering the material and installation cost and complexity. For ordering simplicity, the Proxess Mini-IQ includes both mullion and single-gang adapter plates.
- Further, in ProxessIQn systems, adding a Bluetooth bridge will bring all the mini-controllers with in range online.

FEATURES

SIMPLICITY	<i>One-Click to add a card. One-click to add a door. One-click to initialize each. Doors can be added, moved and configured in the software in seconds, even from remote locations.</i>
NETWORK-ON-CARD	Proxess credentials go beyond just passing a number to the reader. They know where they belong and perform a handshake with the readers for ultimate security.
EXPANSION	Unlimited mini-controllers can be added to a Proxess system. Unlimited users and credentials can gain entry and exit through a Mini-IQ.
ENCRYPTION	Upstream and downstream communications utilize AES 256-bit encryption.
DATABASE-ON-PHONE	The Proxess Mini-IQ works with LoxIQ™, our phone-based database, cloud backup, multiple-phone operational redundancy.
COMPATIBILITY	Proxess Mini-IQ controllers are compatible with our multi-technology (Mifare DESFire EV1, 2, or 3 & BLE), secure RS-485 readers and Proxess bridges provide migration to ProxessIQ™ enterprise software as your needs grow.
ONE DOOR, TWO READERS	Standard configuration for a single door with both an entry & exit reader, providing exit control for forensic people counting, area loading analysis and contact tracing.
EASY INSTALLATION	With only local power required, an optional built-in PIR REX and no IT overhead, the Proxess Mini-IQ provides the simplest access control installation for emergency/panic exits.
EVENT REPORTING	Credential transactions and door events never linger as mobile credentials and bridges route them to the software.

ADDITIONAL FEATURES

✓	Simplest access control installation. Configuration with a click in the management app.	✓	Highest level security cards using Mifare DESFire EV 1, 2, or 3 and BLE Mobile Credentials
✓	Most cost-effective door control installation. All device connections located at the door.	✓	<i>Network-on-Card</i> credentials & mobile app collect transactions from Proxess Mini-IQ
✓	Built-in request-to-exit motion detector option reduces equipment and labor costs	✓	Future RS-485 communication with Proxess locksets and downstream sub-controllers
✓	For all door types: emergency egress, pedestrian gates, vehicle gates...	✓	Unlimited users per door and doors per system
✓	Connect both (separately purchased) Entry and Exit card readers for 2-way control	✓	With ProxessIQ only, bring mini-controllers online with Bluetooth bridges

SYSTEM SPECIFICATIONS

HOW TO ORDER:

- PX-ST Mini-Controller with Pigtail & Enclosure
- PX-REX Mini-Controller with Pigtail, Enclosure & REX
- Bo1h Mullion & Single-Gang Backplates Included
- Requires RX-MU2 card Reader



FEATURES

Reader Ports	2
Input for Request-to-Exit	Yes
Input for Door Contact	Yes
In/Out Reader Configuration	Yes

ELECTRICAL

Line Voltage Input	12VDC
Current Consumption	100mA Typical, 3A Max
Output Voltage	12VDC
Output Current	2A (Relay Limited and Power Supply Dependent)
Alternate Output Voltage	3VDC
Alternate Output Current	500mA
Power Output (AF-AT Type 1)	10.3W

COMMUNICATIONS

Reader Communication	2-wire, RS-485, Bi-Directional, 230Kbps
Backhaul	Bluetooth Low Energy

SYSTEM SPECIFICATIONS

Cardholders	Unlimited
Mini-Controllers per System	Unlimited
Time Zones - LoxIQ	Limited
Time Zones – ProxessIQ	Unlimited
Data Retention	30 Days, Flash Storage
Door Open Time	0-255 Seconds

HARDWARE

Housing	ABS Plastic
Backplates	Powder coated Metal
Weight with Mullion plate	148g
Weight with Single-Gang Plate	200g
Weight as Shipped in Box	345g

Mullion Mounting Backplate ▼

Height	4.93" (125mm)
Width	1.77" (45mm)
Depth	1.05" (27mm)

Single-Gang Backplate ▼

Height	5.25" (134mm)
Width	2.75" (70mm)
Depth	1.05" (27mm)

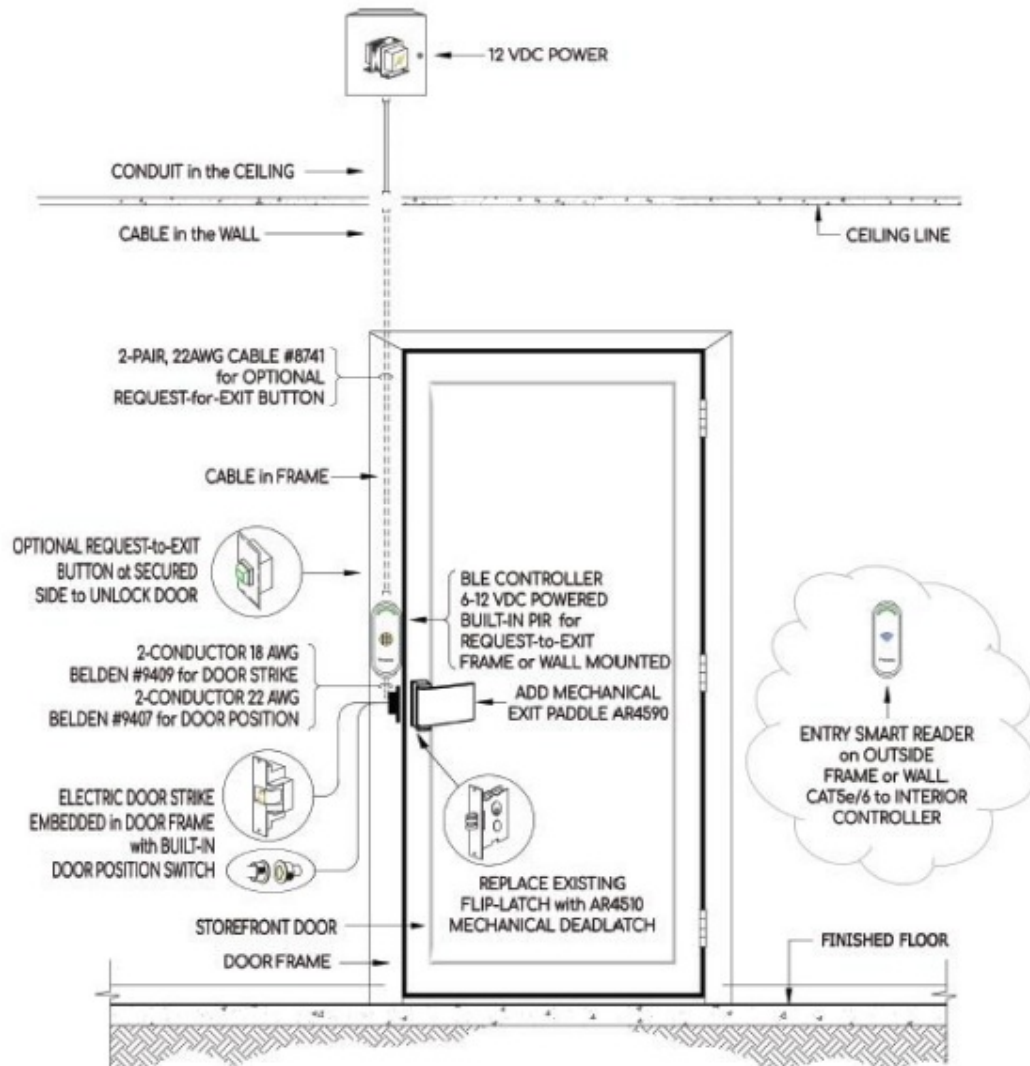
WIRING

Power Cable Type	2C, 18AWG
Reader Cable Type	CAT-6
REX Cable Type	4C, 22AWG, OS
Door Contact Cable Type	2C, 22AWG, OS
Lock Release Cable Type	2C, 18AWG, OS
RS-485 Cable Output Type	4C, 22AWG, OS

ENVIRONMENT





Operating Temperature PX-ST	-40C to 85C; -40F to 185F
Operating Temperature PX-REX	-20C to 60C; -4F to 140F

SAMPLE DOOR DEVICE LAYOUT AND CONNECTIVITY



- Proxess has a library of door drawings. Contact Proxess for specific door drawings required for your design project.
- Contact Proxess If dealer requires help In sourcing auxiliary hardware products for Mini-Controller doors such as panic devices. electric str ikes. magnetic locks or narrow-ra il, storefront door locks & exit handles/paddles.

LoxIQ™ vs ProxessIQ™ Matrix

<div>  <div> HOME FEATURES & FUNCTIONS SUPPORT & DATA SHEETS <div>  DESIGN GUIDE </div> WHO WE ARE CONTACT </div> </div>			
FEATURE/FUNCTION			
ACS & Database on	Phone(s)	Computer	
Backup	Cloud	IT Selected Location	
Make Database Changes	Phones	Computers	
Clients/Administration	Unlimited Phones	Unlimited PCs	
Lockset Connectivity	Wire-free, Network-on-Phone	Online Wireless, Wirefree and/or Network-on-Phone	
Mini-Controller Connectivity	Wire-free, Network-on-Phone	Online Wireless, Wirefree and/or Network-on-Phone	
Bridges/Gateways/Hubs	No	Yes	
Audits to Software	Present Management App to Door	Present Management App to Door Present Card to Enrollment Reader Use Card at Checkpoint Reader	
Emergency Key Over-ride Tracking	Yes	Yes	
Mobile Credential Audits to Software	Real-time	Real-time	
Mobile Credential Rights Changes	Real-time	Real-time	
Mobile Credential Online & Offline Operation	Yes	Yes	
Lockdown from the Locksets	Yes	Yes	
Lockdown from Mobile Credential	Yes	Yes	
Lockdown from Software	No	Yes	
Open Door Remotely from Software	No (Alternative: Give temporary Mobile Credential)	Yes	
Email Notifications	No	Yes	
Custom Time Schedules	2	Unlimited	
Doors per System	Unlimited	Unlimited	
Credentials per System	Unlimited	Unlimited	
No-Touring to Doors to add Cards	No-Touring Required (Network-on-Card/Phone)	No-Touring Required (due to Network-on-Card)	
Door Unlock Schedules	No	Unlimited	

Operations Manual Location: LoxIQ™

Proxess SOFTWARE MANUAL

ProxessIQ™ Software & Proxess Sync™ Mobile App Configuration

10-04-19

HOME FEATURES & FUNCTIONS **SUPPORT & DATA SHEETS** DESIGN GUIDE WHO WE ARE CONTACT

SUPPORT DOCUMENTS

<

Proxess MX Series Wireless Mortise Lockset

MX Series Mortise Installation Guide (Prezi Version)

Controller / Bridge
SERVICE MANUAL
Design, Configuration & Operation

Controllers & Bridges Service Manual

Proxess

LoxIQ™
OPERATIONS MANUAL

LoxIQ™ User Guide (Android)

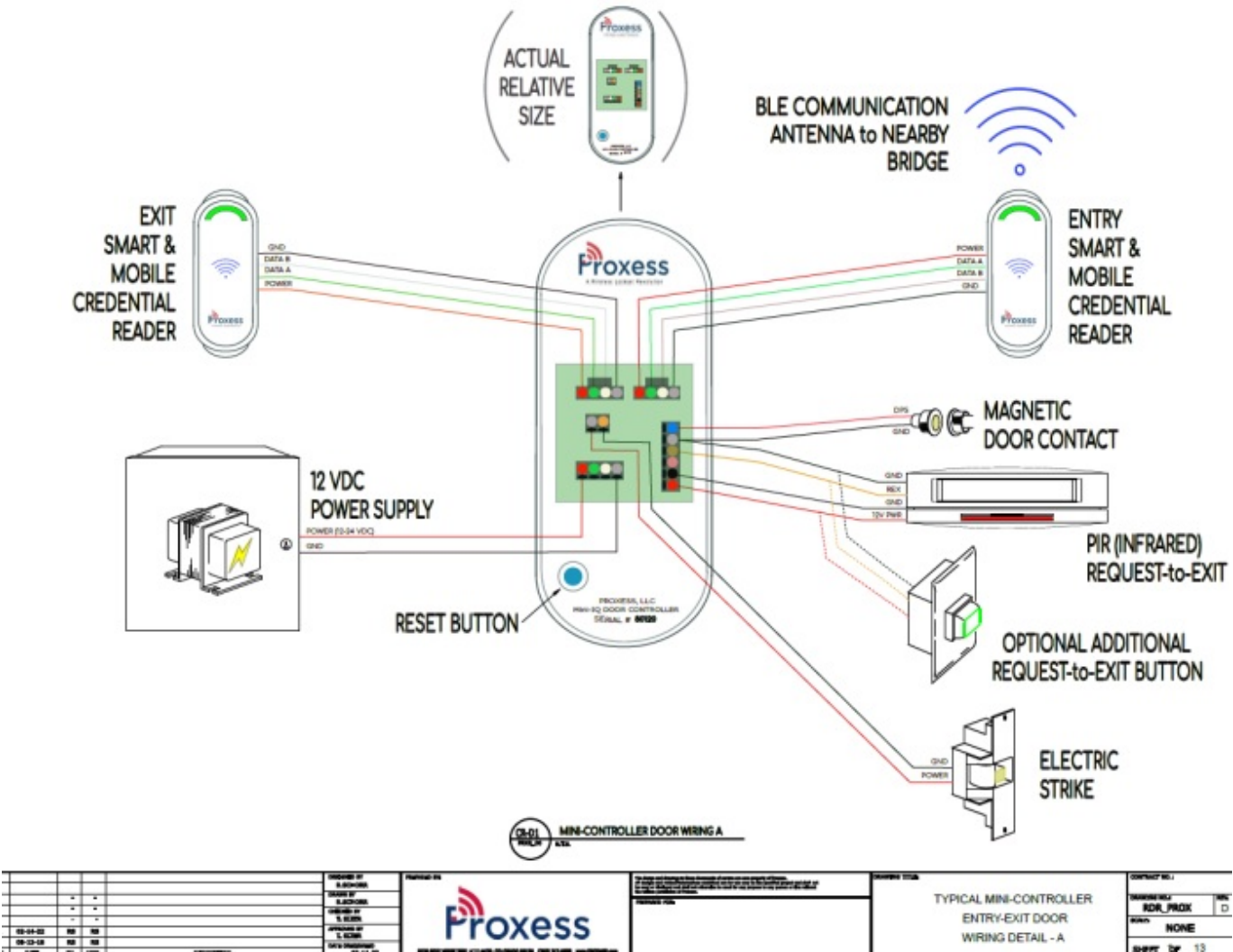
Proxess

LoxIQ™
OPERATIONS MANUAL

LoxIQ™ User Guide (iOS/Apple) (Prezi Version)

>

Mini-IQ Wiring Diagram



Door Typical – Storefront

CD-01 EXTERIOR VIEW - STOREFRONT ENTRY SMART CARD READER & MINI-CONTROLLER
REV. 00 8/06

08-02 INTERIOR VIEW - STOREFRONT EXIT ELECTRIC STRIKE & PADDLE or BAR with MINI-CONTROLLER
REV. 00 R.A.S.

				COMMENTS BY BLACKHORN ISSUED BY BLACKHORN PREPARED BY L. KOPPEL APPROVED BY L. KOPPEL DATE SUBMITTED 02-14-12		PROJECT NO.  4000 ROCKWELL ROAD, SUITE 100, ROCKWELL, NC 27867 (919) 597-0000 www.froxess.com		The design and drawings are the property of Froxess and are not to be reproduced, stored in a retrieval system, or transmitted in any form or by any means, electronic, mechanical, photocopying, recording, or by any information storage and retrieval system, without the prior written permission of Froxess.		DRAWING TITLE STOREFRONT ENTRY READER MINI-CONTROLLER with ELECTRIC STRIKE and MECHANICAL EXIT PADDLE or BAR		CONTRACT NO. DRAWING ONLY NONE SHEET 1 OF 13	
--	--	--	--	--	--	--	--	---	--	---	--	---	--

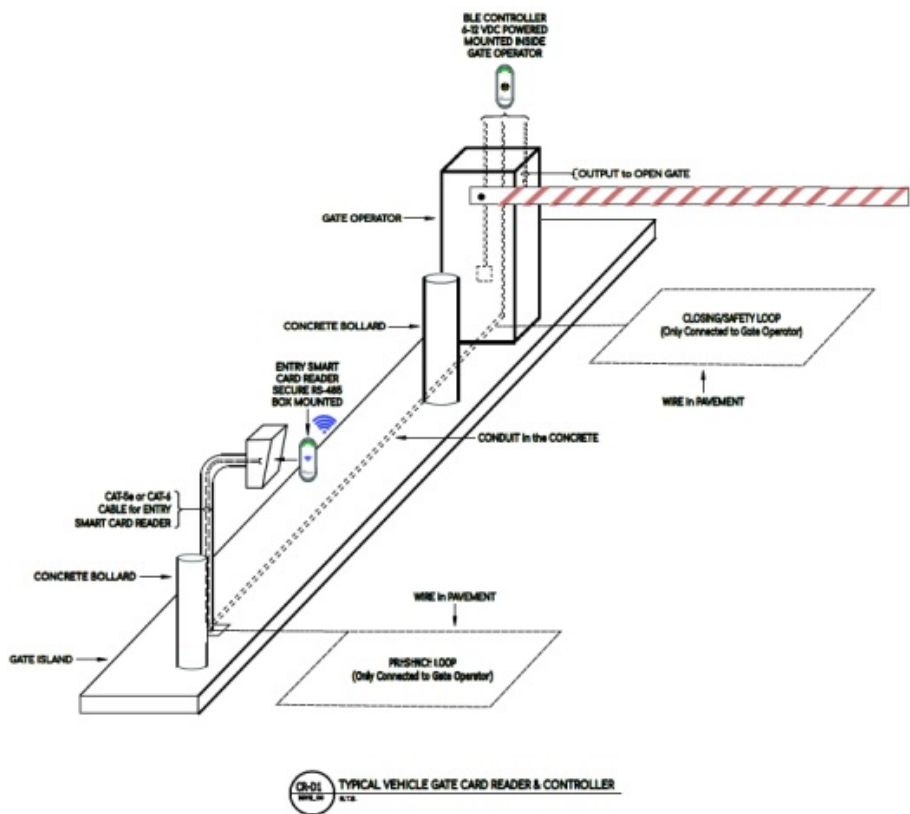
Door Typical – Panic-Exit

02-01 EXTERIOR VIEW - ENTRY SMART CARD READER & EXTERIOR DOOR
REV. 04 12/12

08-02 INTERIOR VIEW - SURFACE STRIKE, MINI-CONTROLLER, HM DOOR, SOLID FRAME & WALL
10/15/16 11/16

				DRAWING BY R. B. JONES		<div>Proxess and Proxess, the Proxess logo and Proxess are registered trademarks of Proxess, Inc. All other trademarks are the property of their respective owners. Proxess, Inc. is not responsible for the accuracy of the information provided in this drawing. Proxess, Inc. is not responsible for the accuracy of the information provided in this drawing.</div>  <div>Proxess 1000 WEST WILSON WAY, SUITE 100, SAN ANTONIO, TEXAS 78201 (210) 351-9900 www.proxess.com</div>	DRAWING TITLE TYPICAL ENTRY-EXIT READER CONTROLLER DOOR CONFIGURATION DETAIL - A		CONTRACT NO. DRAWING NO. BX-RX-RVES-DEX	
				CHECKED BY BLACKBURN					SCALE D	
				THESE BY L. JONES					REVISIONS NONE	
				APPROVED BY L. JONES					SHEET NO. OF 13	
DATE: 02-14-13 TIME: 10:00 AM				DATE: 02-14-13 TIME: 10:00 AM						

Door Typical – Vehicle Gate



				REVISIONS		REVISIONS		REVISIONS		REVISIONS	
1	1	1	1	1	1	1	1	1	1	1	1
2	2	2	2	2	2	2	2	2	2	2	2
3	3	3	3	3	3	3	3	3	3	3	3
4	4	4	4	4	4	4	4	4	4	4	4
5	5	5	5	5	5	5	5	5	5	5	5
6	6	6	6	6	6	6	6	6	6	6	6
7	7	7	7	7	7	7	7	7	7	7	7
8	8	8	8	8	8	8	8	8	8	8	8
9	9	9	9	9	9	9	9	9	9	9	9
10	10	10	10	10	10	10	10	10	10	10	10
11	11	11	11	11	11	11	11	11	11	11	11
12	12	12	12	12	12	12	12	12	12	12	12
13	13	13	13	13	13	13	13	13	13	13	13
14	14	14	14	14	14	14	14	14	14	14	14
15	15	15	15	15	15	15	15	15	15	15	15
16	16	16	16	16	16	16	16	16	16	16	16
17	17	17	17	17	17	17	17	17	17	17	17
18	18	18	18	18	18	18	18	18	18	18	18
19	19	19	19	19	19	19	19	19	19	19	19
20	20	20	20	20	20	20	20	20	20	20	20
21	21	21	21	21	21	21	21	21	21	21	21
22	22	22	22	22	22	22	22	22	22	22	22
23	23	23	23	23	23	23	23	23	23	23	23
24	24	24	24	24	24	24	24	24	24	24	24
25	25	25	25	25	25	25	25	25	25	25	25
26	26	26	26	26	26	26	26	26	26	26	26
27	27	27	27	27	27	27	27	27	27	27	27
28	28	28	28	28	28	28	28	28	28	28	28
29	29	29	29	29	29	29	29	29	29	29	29
30	30	30	30	30	30	30	30	30	30	30	30
31	31	31	31	31	31	31	31	31	31	31	31
32	32	32	32	32	32	32	32	32	32	32	32
33	33	33	33	33	33	33	33	33	33	33	33
34	34	34	34	34	34	34	34	34	34	34	34
35	35	35	35	35	35	35	35	35	35	35	35
36	36	36	36	36	36	36	36	36	36	36	36
37	37	37	37	37	37	37	37	37	37	37	37
38	38	38	38	38	38	38	38	38	38	38	38
39	39	39	39	39	39	39	39	39	39	39	39
40	40	40	40	40	40	40	40	40	40	40	40
41	41	41	41	41	41	41	41	41	41	41	41
42	42	42	42	42	42	42	42	42	42	42	42
43	43	43	43	43	43	43	43	43	43	43	43
44	44	44	44	44	44	44	44	44	44	44	44
45	45	45	45	45	45	45	45	45	45	45	45
46	46	46	46	46	46	46	46	46	46	46	46
47	47	47	47	47	47	47	47	47	47	47	47
48	48	48	48	48	48	48	48	48	48	48	48
49	49	49	49	49	49	49	49	49	49	49	49
50	50	50	50	50	50	50	50	50	50	50	50
51	51	51	51	51	51	51	51	51	51	51	51
52	52	52	52	52	52	52	52	52	52	52	52
53	53	53	53	53	53	53	53	53	53	53	53
54	54	54	54	54	54	54	54	54	54	54	54
55	55	55	55	55	55	55	55	55	55	55	55
56	56	56	56	56	56	56	56	56	56	56	56
57	57	57	57	57	57	57	57	57	57	57	57
58	58	58	58	58	58	58	58	58	58	58	58
59	59	59	59	59	59	59	59	59	59	59	59
60	60	60	60	60	60	60	60	60	60	60	60
61	61	61	61	61	61	61	61	61	61	61	61
62	62	62	62	62	62	62	62	62	62	62	62
63	63	63	63	63	63	63	63	63	63	63	63
64	64	64	64	64	64	64	64	64	64	64	64
65	65	65	65	65	65	65	65	65	65	65	65
66	66	66	66	66	66	66	66	66	66	66	66
67	67	67	67	67	67	67	67	67	67	67	67
68	68	68	68	68	68	68	68	68	68	68	68
69	69	69	69	69	69	69	69	69	69	69	69
70	70	70	70	70	70	70	70	70	70	70	70
71	71	71	71	71	71	71	71	71	71	71	71
72	72	72	72	72	72	72	72	72	72	72	72
73	73	73	73	73	73	73	73	73	73	73	73
74	74	74	74	74	74	74	74	74	74	74	74
75	75	75	75	75	75	75	75	75	75	75	75
76	76	76	76	76	76	76	76	76	76	76	76
77	77	77	77	77	77	77	77	77	77	77	77
78	78	78	78	78	78	78	78	78	78	78	78
79	79	79	79	79	79	79	79	79	79	79	79
80	80	80	80	80	80	80	80	80	80	80	80
81	81	81	81	81	81	81	81	81	81	81	81
82	82	82	82	82	82	82	82	82	82	82	82
83	83	83	83	83	83	83	83	83	83	83	83
84	84	84	84	84	84	84	84	84	84	84	84
85	85	85	85	85	85	85	85	85	85	85	85
86	86	86	86	86	86	86	86	86	86	86	86
87	87	87	87	87	87	87	87	87	87	87	87
88	88	88	88	88	88	88	88	88	88	88	88
89	89	89	89	89	89	89	89	89	89	89	89
90	90	90	90	90	90	90	90	90	90	90	90
91	91	91	91	91	91	91	91	91	91	91	91
92	92	92	92	92	92	92	92	92	92	92	92
93	93	93	93	93	93	93	93	93	93	93	93
94	94	94	94	94	94	94	94	94	94	94	94
95	95	95	95	95	95	95	95	95	95	95	95
96	96	96	96	96	96	96	96	96	96	96	96
97	97	97	97	97	97	97	97	97	97	97	97
98	98	98	98	98	98	98	98	98	98	98	98
99	99	99	99	99	99	99	99	99	99	99	99
100	100	100	100	100	100	100	100	100	100	100	100

Documents / Resources

Mini-IQ

Mini-Controller & Reader

Supplemental selection, installation, and configuration guidance

[Proxess Mini-IQ Mini Controller and Reader](#) [pdf] User Guide

Mini-IQ Mini Controller and Reader, Mini-IQ, Mini Controller and Reader, Mini Controller, Mini Reader