



Contents [[hide](#)]

- [1 ProtoArc EM15 Bluetooth Mouse](#)
- [2 Package List](#)
- [3 Product Features](#)
- [4 Bluetooth Connection](#)
- [5 Charging Guide](#)
- [6 Data Parameters](#)
- [7 EU Declaration of Conformity](#)
- [8 Documents / Resources](#)
 - [8.1 References](#)



ProtoArc EM15 Bluetooth Mouse



Package List



Mouse* 1



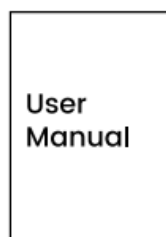
USB Receiver* 1



Type-C Receiver* 1

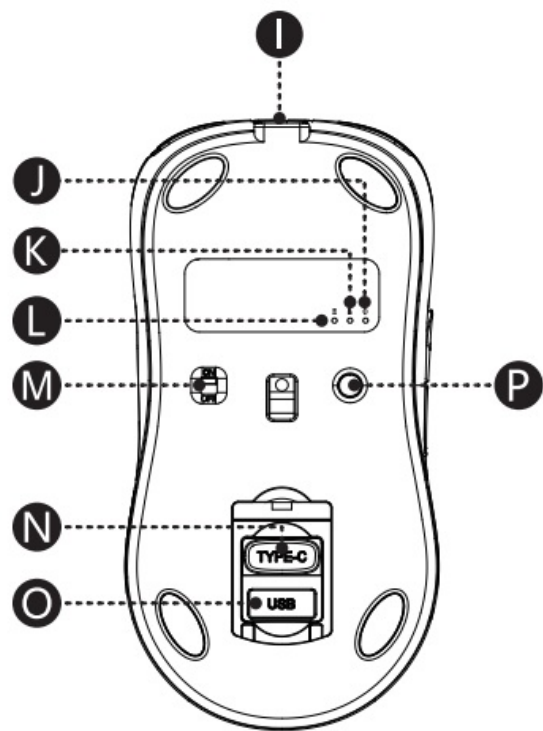
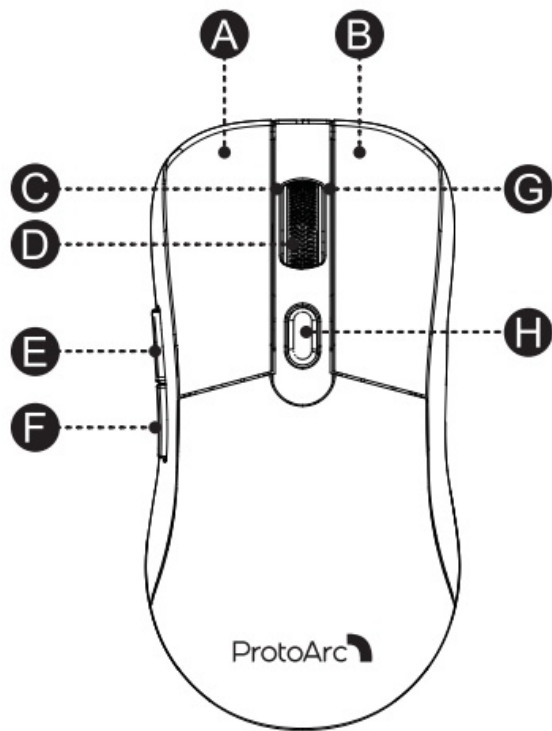


Type-C Charging Cable* 1



User Manual* 1

Product Features



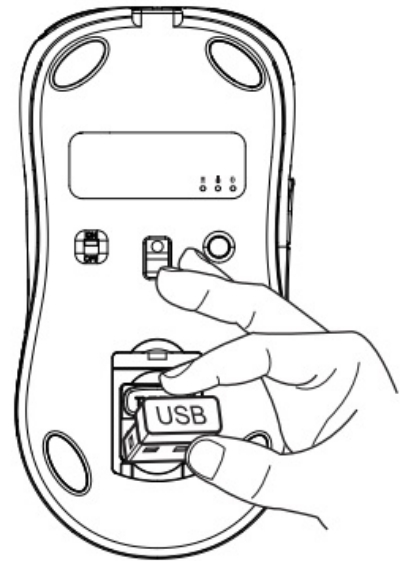
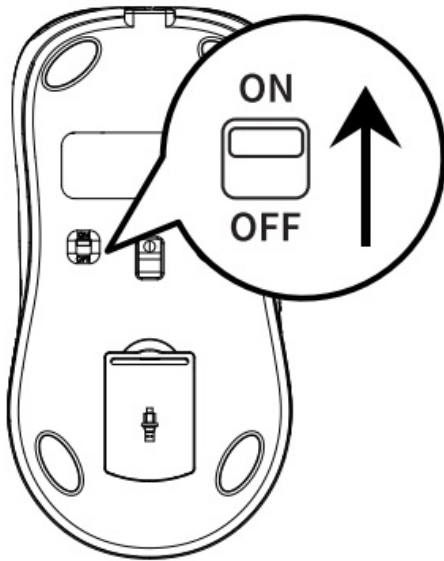
- A Left Button
- B Right Button
- C DPI / Low Battery Indicator
- D Scroll Wheel
- E Forward Button
- F Backward Button
- G Charging Indicator
- H DPI Button
- I TYPE-C Charging Port
- J Bluetooth Connection Indicator
- K Type-C Connection Indicator
- L USB Connection Indicator
- M Power Switch
- N Type-C Receiver
- O USB Receiver
- P Channel Switch Button

DPI Button

Press the DPI button to adjust the cursor sensitivity. A single flash of indicator light corresponds to DPI level 1000, two to 1600, three to 2400.

2.4G USB Connection

1. Turn on the power switch to ON.
2. Take out the USB receiver.



3. Press the channel switch button until the white light USB is on and enter 2.4G USB channel.
4. Insert the usb receiver into your computer's usb port.

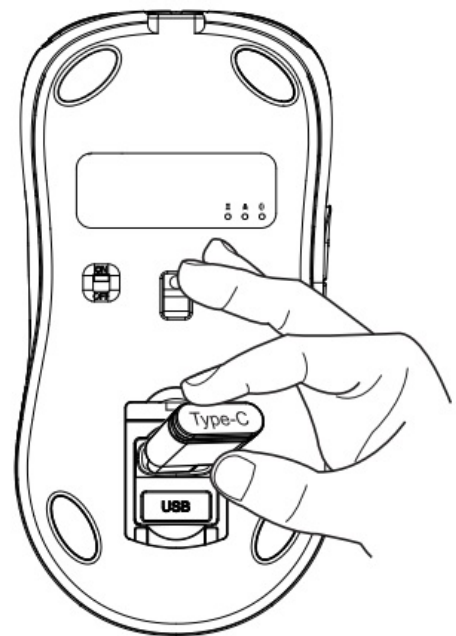
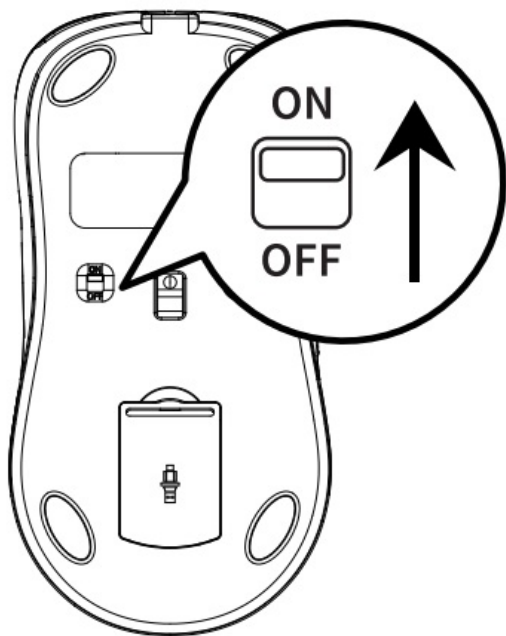


4



Type-C Connection

1. Turn on the power switch to ON.
2. Take out the Type-C receiver.



3. Press the channel switch button until the white light Type-c is on and enter Type-c channel.
4. Insert the Type-C receiver into your computer's Type-C port.

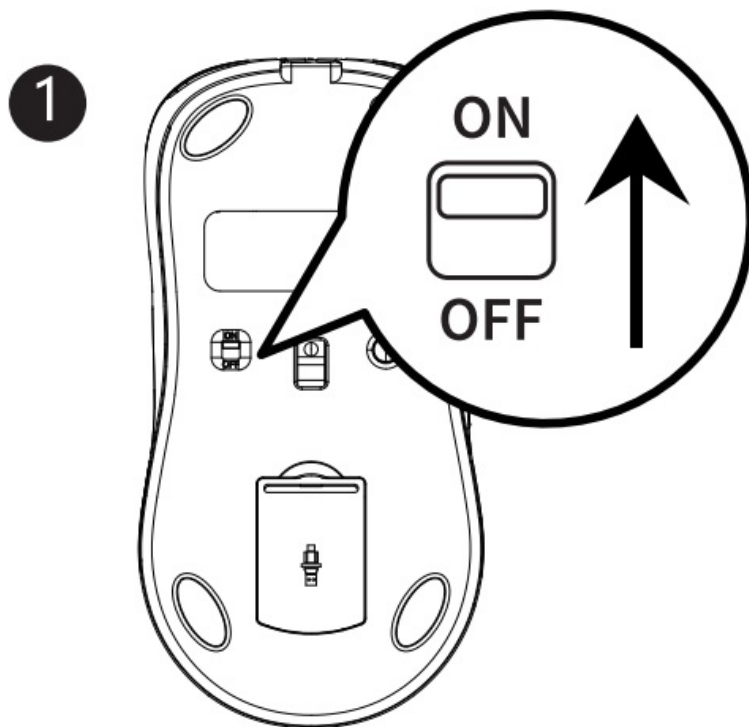




4

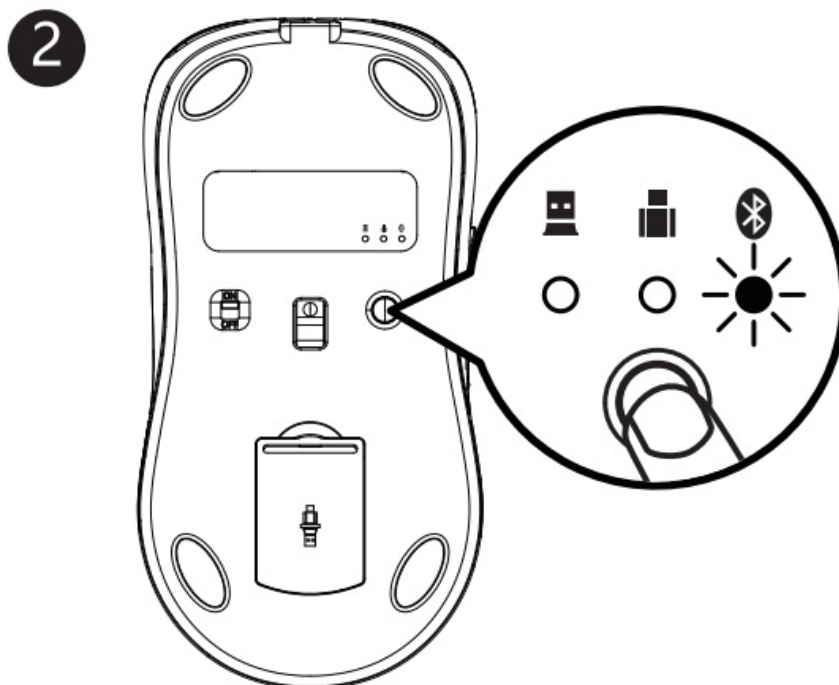


Bluetooth Connection

1. Turn on the power switch to ON.

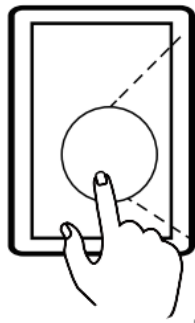





2. Press the channel switch button until the & indicator light is on, the  mouse enters the Bluetooth channel. Long press the channel switch button for 3-5 seconds again, until the & light  flashes quickly, then the mouse enters the Bluetooth pairing mode.



3. Turn on the Bluetooth settings on your device, search or select “ProtoArc EM15” and start Bluetooth pairing until the connection is completed.

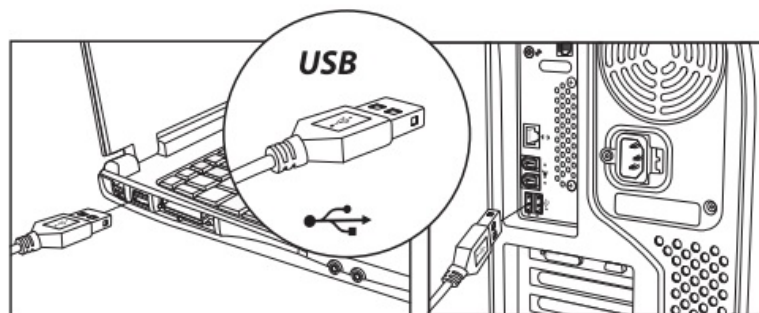
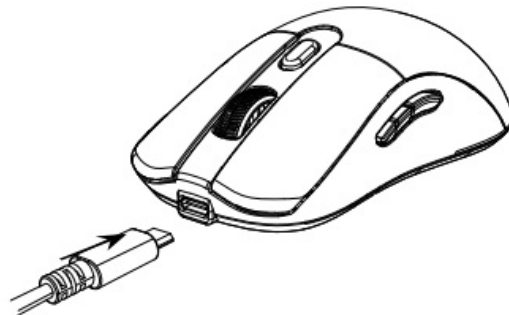
3



- | | | | |
|---|---|---------------|-----------|
| 1 |  | Settings | |
| 2 |  | Bluetooth | On > |
| 3 |  | ProtoArc EM15 | Connected |

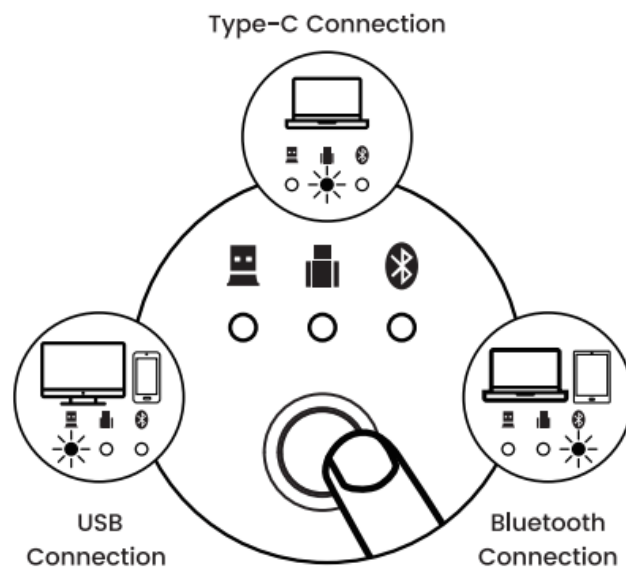
Charging Guide

1. When the mouse power is low, the charging indicator and the corresponding channel indicator flash until turned off.
2. Insert the Type-C charging cable into the mouse, the red light stays on during charging.
3. The charging time is about 1-3.5 hours and the indicator light will turn green after being fully charged. Please use the charging cable included with the mouse to charge. If using another charging cable, please make sure it is an USB-A to Type-C cable.



Switch Connection Channel

After USB / Type-C / Bluetooth channel is connected, press the channel switch button on the bottom of the mouse to switch between multiple devices.



Data Parameters

Engine	Optics
DPI	1000/1600/2400 DPI
Mouse Button Life	More than 3 million times
Input	5V \Rightarrow 250mA
Battery Capacity	300mAh
Battery Life	1000 times charge and discharge cycles
Standby Time	200 Days
Continuous Working Time	100 hours
Mouse Weight	2.4oz (68g)
Mouse Dimensions	125.5*64*39 mm

Transmission Parameters

Transmission Distance	10m
Working Voltage	3.7V
Working Current	<3mA
Polling Rate	250Hz
System Requirements	An available USB/ Type C port Windows 8 / 10 or higher version Mac OS X 10.10 or higher version Android 4.3 or higher version

Bluetooth Transmission Parameters

Transmission Distance	10m
Working Voltage	3.7V
Working Current	<3mA
Polling Rate	125Hz
System Requirements	Bluetooth receiving device Windows 8 / 10 or higher version Mac OS X 10.10 or higher version Android 4.3 or higher version

Tips 1. If the Bluetooth connection is not working properly, turn off and turn on the mouse or to restart the device's Bluetooth and attempt to reconnect. Or delete the extra Bluetooth option name in the Bluetooth connection list of the device and reconnect. 2. To switch to a successfully connected channel, press the channel button and wait for 3 seconds before continuing to use. 3. The mouse has a memory function. When it connected on a specific channel, turn off the mouse and turn on again, they will automatically connect to the default channel and this channel indicator is on.

Sleep Mode

1. When the mouse is not used for more than 60 minutes, it will automatically enter into sleep mode and the indicator light will turn off.
2. When using the mouse again, just press any key, the mouse will wake up within 3 seconds, and the lights come back on and mouse starts working.

Safety Warning

- **IMPORTANT:** To reduce risk of fire, electric shock, or injury, follow these safety instructions.
- **Charging Safely:** Use only the provided cable. Charge in a well-ventilated, dry area away from flammable materials.
- **Battery Handling:** Do not attempt to replace the item's lithium battery. Battery replacement should be conducted by qualified personnel to prevent hazards.
- **Heat Exposure:** Avoid leaving the item in high-temperature environments or in direct sunlight, which could result in a fire hazard.
- **Liquid Exposure:** Keep the item away from water and liquids.
- Do not use if wet until thoroughly dried.
- **Damage and Leakage:** Cease usage and consult customer service if the item is

damaged or the battery leaks.

- Correct Disposal: Follow local regulations for disposing of electronic devices and batteries. Do not dispose of with household waste.
- Radio Frequency Interference: This device may cause interference with other electronics. Keep a safe distance from sensitive devices.
- Child Safety: Keep the item and its components out of reach of children to avoid choking or battery ingestion hazards.
- Never allow children to handle the item unsupervised.
- CAUTION: Non-compliance with the above warnings can lead to serious injury or property damage.
- For further assistance or information, please contact our customer service.
- Emergency Contact: +1 [866-287-6188](tel:866-287-6188) (United states)

EU Declaration of Conformity

- Declared Object: Bluetooth and 2.4G Dual
- Receiver Wireless Mouse
- Model: EM15 Rating: 3.7V = 10mA Input: 5V= 250mA
- Place of Production: Made in China
- Manufacturer: Dongguan Togran Electronics
- Technology Co.,Ltd Email: sales08@togran.com
- Address: No.110, Shidan Middle Road, Shijie
- Town, Dongguan City, Guangdong Province, China, 523290

European Representative:

- EC REP Business name: g.L.L. GmbH
- Business address: Bauernvogtkoppel, 55c, 22393, Hamburg, Germany
- Email: g.L.L.DE@outlook.com
- Tel: +49 162 3305764

UK REP

Business name: AMANTO INTERNATIONAL TRADE LIMITED


Business address: The Imperial, 31-33 St Stephens Gardens, Notting Hill, London,
United Kingdom, W2 5NA

Email: AmantoUK@outlook.com Tel: +44 7921 801 942

- Position: Signature: Managing Director
- Date of Sign: EU agent name:
- Date of Sign:
- Santer 2022.1.5 Cong Jia 2022.1.5



Documents / Resources

	ProtoArc EM15 Bluetooth Mouse [pdf] User Manual EM15 Bluetooth Mouse, EM15, Bluetooth Mouse
---	--

References

- [User Manual](#)

ProtoArc Bluetooth Mouse, EM15, EM15 Bluetooth Mouse, ProtoArc

Leave a comment

Your email address will not be published. Required fields are marked *

Comment *

Name

Email

Website

☐ Save my name, email, and website in this browser for the next time I comment.

Post Comment

Search:

e.g. whirlpool wrf535swhz

Search

[Manuals+](#) | [Upload](#) | [Deep Search](#) | [Privacy Policy](#) | [@manuals.plus](#) | [YouTube](#)

This website is an independent publication and is neither affiliated with nor endorsed by any of the trademark owners. The "Bluetooth®" word mark and logos are registered trademarks owned by Bluetooth SIG, Inc. The "Wi-Fi®" word mark and logos are registered trademarks owned by the Wi-Fi Alliance. Any use of these marks on this website does not imply any affiliation with or endorsement.