



ProtoArc EM14 Wireless Ergonomic Vertical Mouse User Manual

[Home](#) » [ProtoArc](#) » ProtoArc EM14 Wireless Ergonomic Vertical Mouse User Manual 

Contents

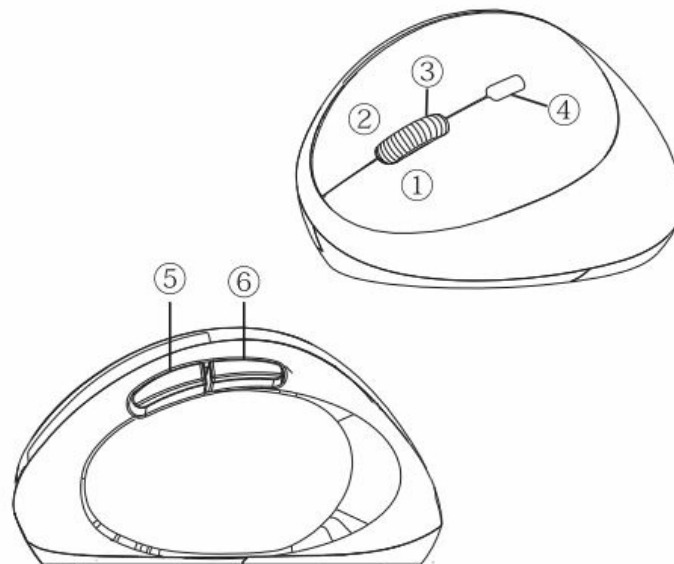
- [1 ProtoArc EM14 Wireless Ergonomic Vertical Mouse](#)
- [2 DISCRIPTION](#)
- [3 PRODUCT FEATURES](#)
- [4 Documents / Resources](#)
- [5 Related Posts](#)



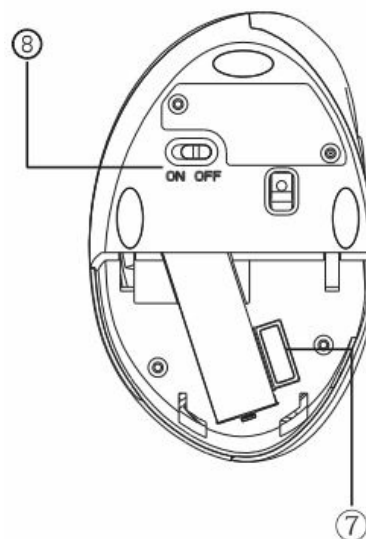
ProtoArc EM14 Wireless Ergonomic Vertical Mouse



DISCRIPTION

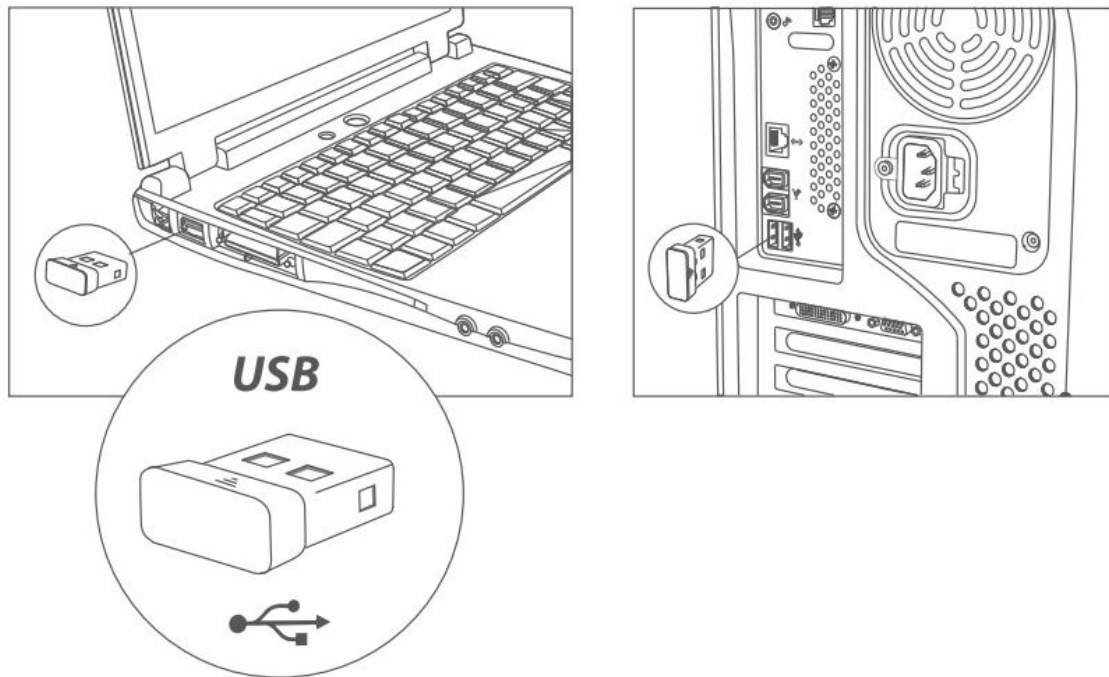


- 1. Left button
- 2. Right button
- 3. Roller
- 4. DPI Regulation
- 5. Forward



- 6. Backward
- 7. CTJ USB Receiver
- 8. On/Off Switch

PRODUCT FEATURES



- Stable wireless transmission 2.4GHz wireless technology can provide a reliable connection and not be subject to any interference in the 360 degrees within 10 meter.
- Adopts Snail-shaped bionic design, comfortable, fast switching, greatly Improving the efficiency of daily work.
- Easily browse the page online, with page forward/backward and zoom function, can be free to operate the page view and adjust the page zoom.
- 3 Adjustable DPI settings 800/1200/1600
- System requirement: Windows:2000/ME/XP/Vista | 7 /8/10/MAC/Linux

Made in China

Documents / Resources

<p>ProtoArc <small>EM14</small></p> <p>User Manual</p> <p>Wireless Optical Vertical Mouse</p> <p>support@protoarc.com www.protoarc.com</p>	<p>ProtoArc EM14 Wireless Ergonomic Vertical Mouse [pdf] User Manual</p> <p>EM14 Wireless Ergonomic Vertical Mouse, EM14, Wireless Ergonomic Vertical Mouse, Ergonomic Vertical Mouse, Vertical Mouse, Mouse</p>
---	--