



ProtoArc EM11 Bluetooth Vertical Ergo Mouse User Manual

[Home](#) » [ProtoArc](#) » ProtoArc EM11 Bluetooth Vertical Ergo Mouse User Manual 



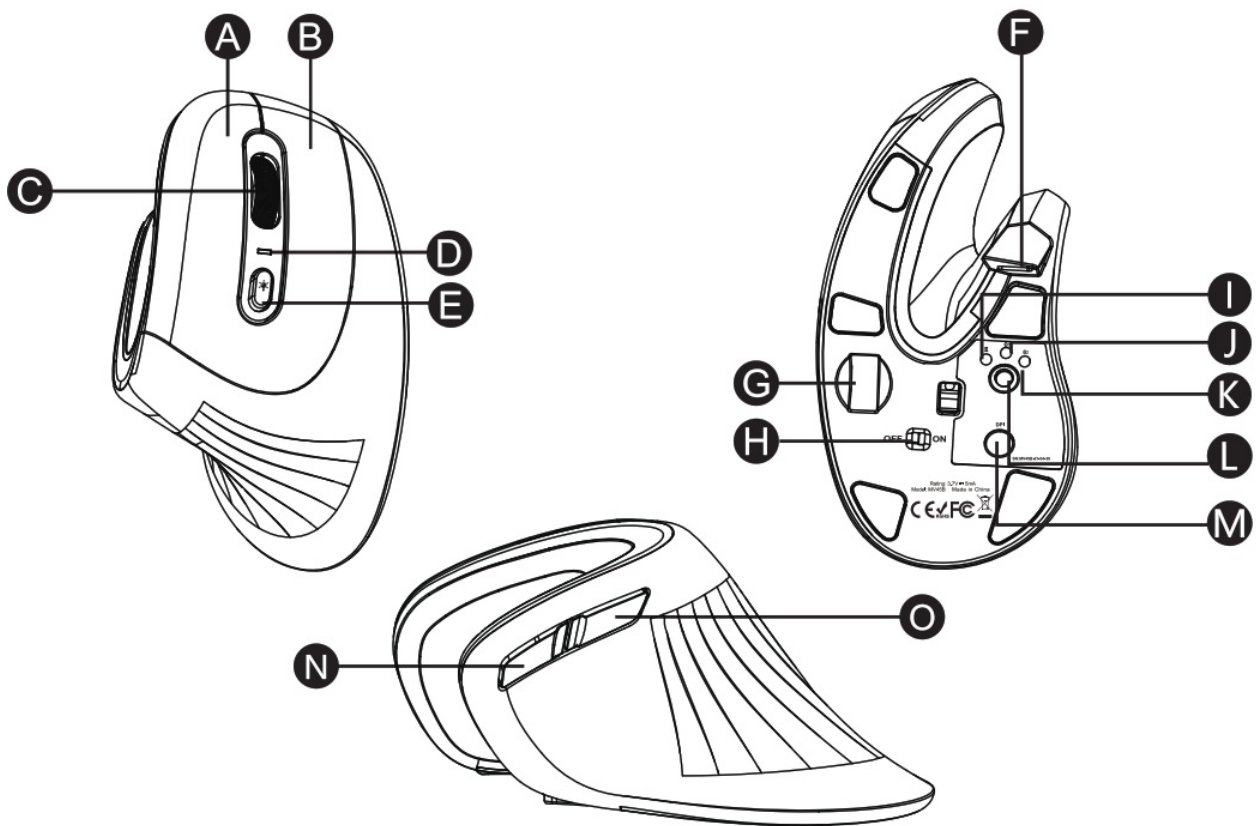
EM11 Bluetooth Vertical Ergo Mouse
User Manual

2.4G+Bluetooth Dual-Mode RGB Ergonomic Mouse

Contents

- [1 Product Features](#)
- [2 2.4G USB Connection](#)
- [3 Bluetooth Connection](#)
- [4 How to Switch Connection Mode](#)
- [5 How to Charge the Mouse](#)
- [6 Specifications](#)
- [7 Documents / Resources](#)
- [8 Related Posts](#)

Product Features



- A.** Left Button
- B.** Right Button
- C.** Scroll Wheel
- D.** DPI Indicator/Low-Battery Indicator
- E.** Light Mode Switch Button
- F.** TYPE-C Charging Port
- G.** USB Receiver
- H.** Power Switch

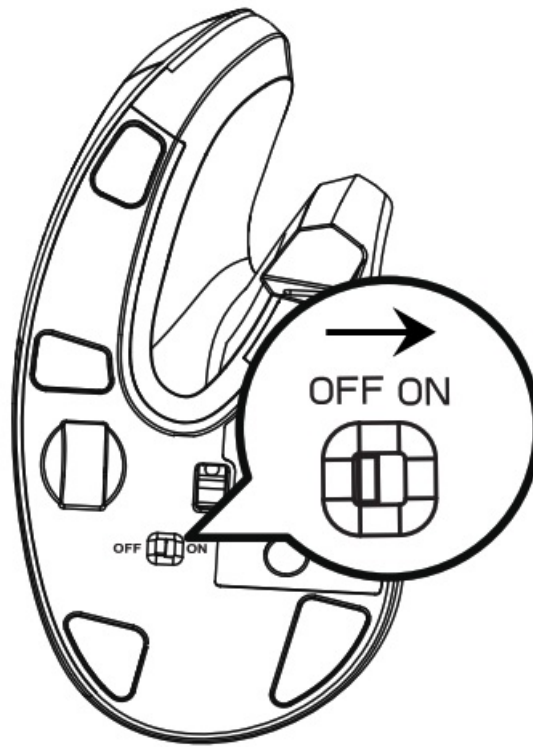
- I.** 2.4 G Indicator
- J.** Bluetooth 1 Indicator
- K.** Bluetooth 2 Indicator
- L.** Mode Switch Button
- M.** DPI Button
- N.** Forward button
- O.** Backward button

Light Effect Mode:

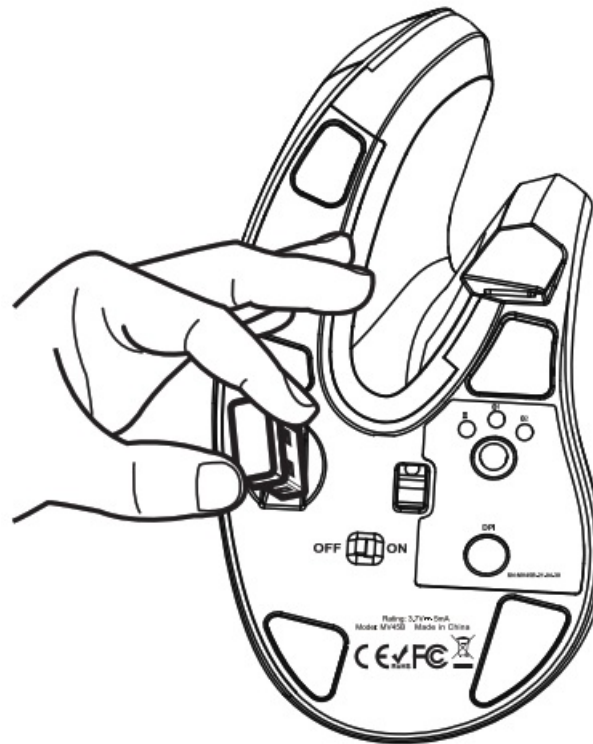
1. Streamer Mode
2. Neon Mode
3. Breathing Mode
4. Monochrome streamer Mode


2.4G USB Connection

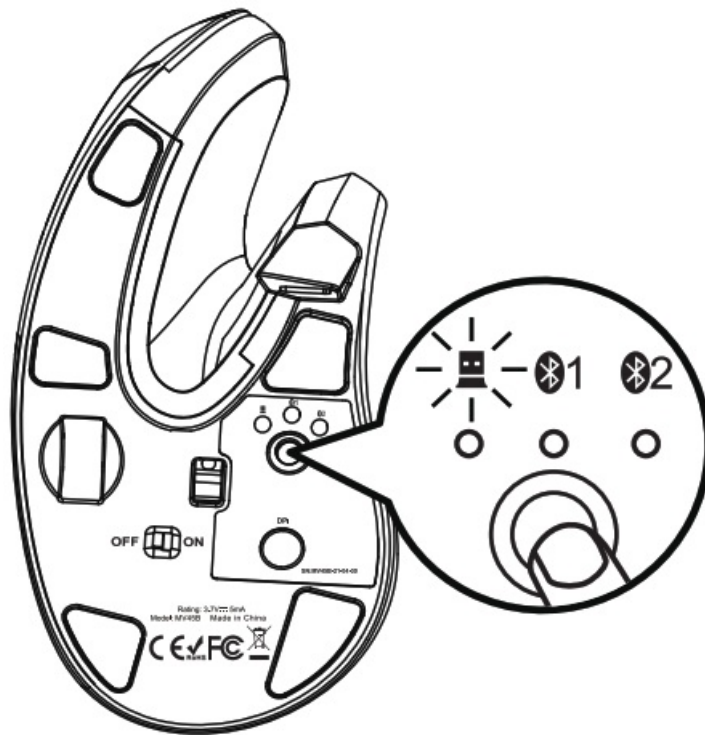
1. Turn on the power switch to ON.



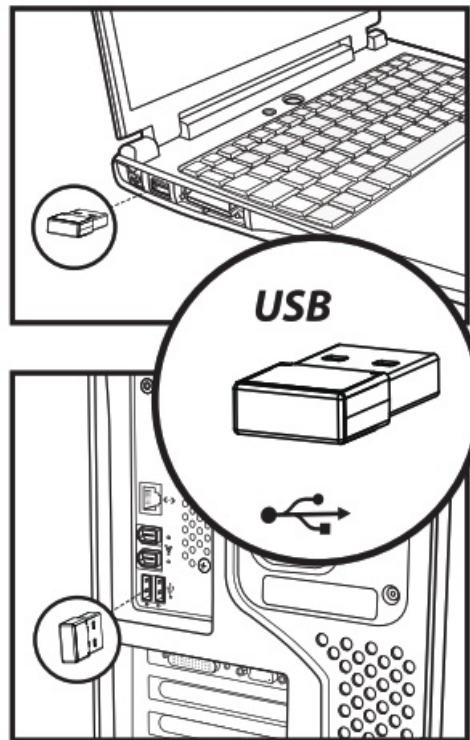
2. Take out the receiver.



3. Press and hold the mode switch button at the bottom until  the white light comes on to enter 2.4G mode.

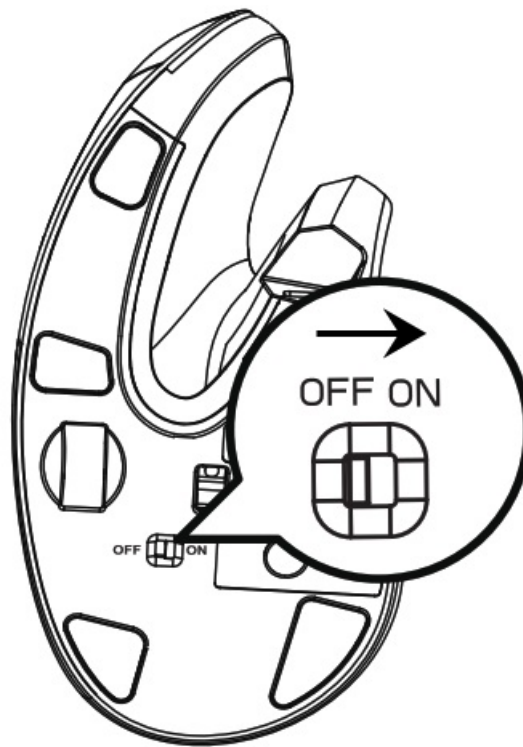


4. Insert the usb receiver into your computer's usb port.

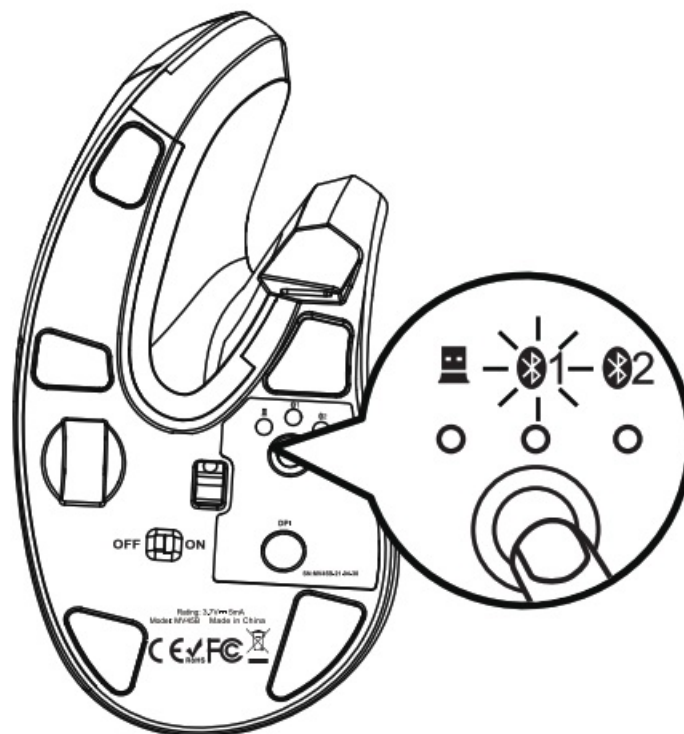


Bluetooth Connection

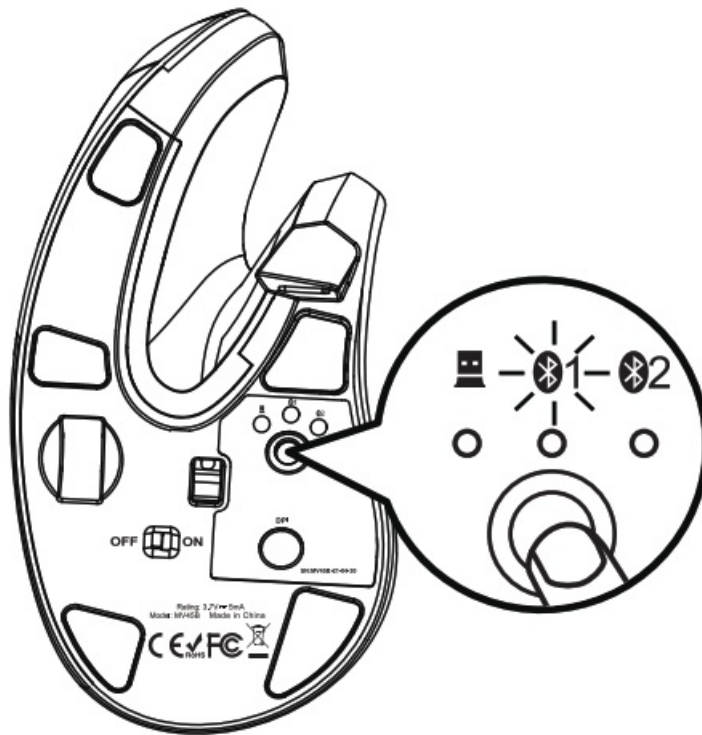
1. Turn on the power switch to ON.



2. Press and hold the mode switch button at the bottom to switch to BT1 or BT2, when the white light flashes slowly.



3. Long press the mode switch button at the bottom for 3-5 seconds until the white light flashes rapidly to enter Bluetooth pairing mode.

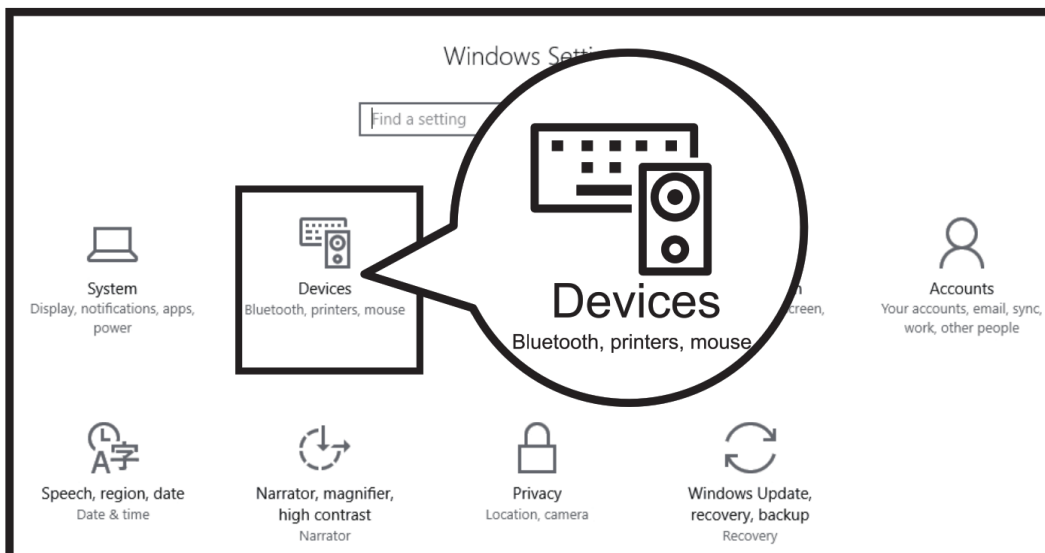


Windows 10 System

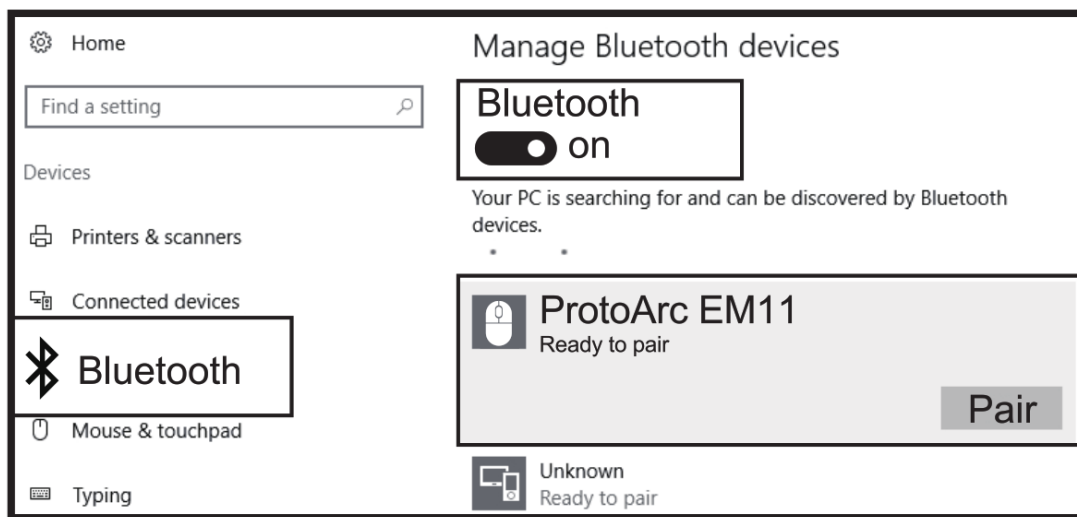
- Click on the computer's "Bluetooth device".



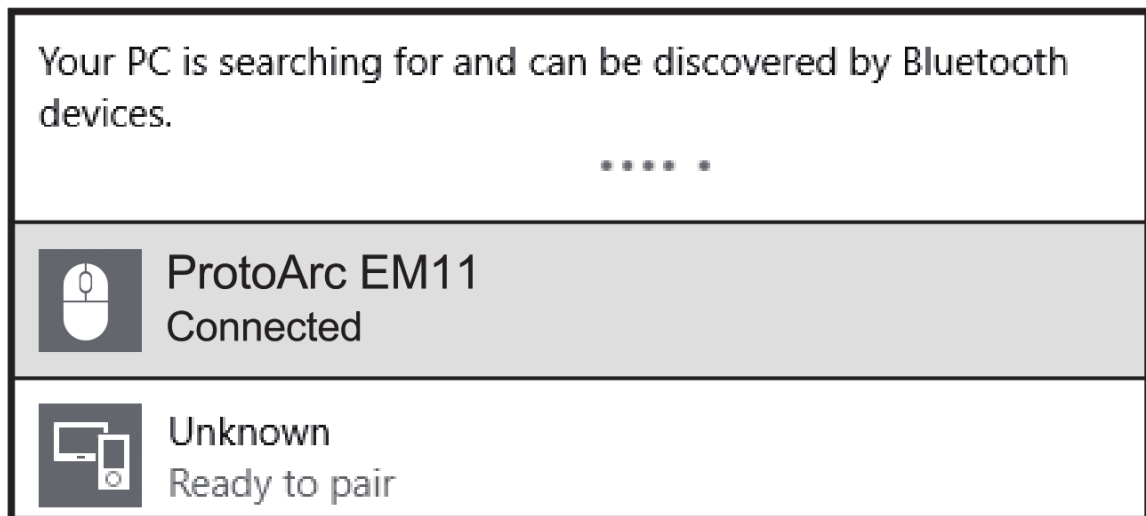
- Click on "Add or Remove Bluetooth Devices".



- Your computer will automatically search for "ProtoArc EM11" and then click "Pair".



7. "BT + 2.4G Mouse" is connected and can be used normally.



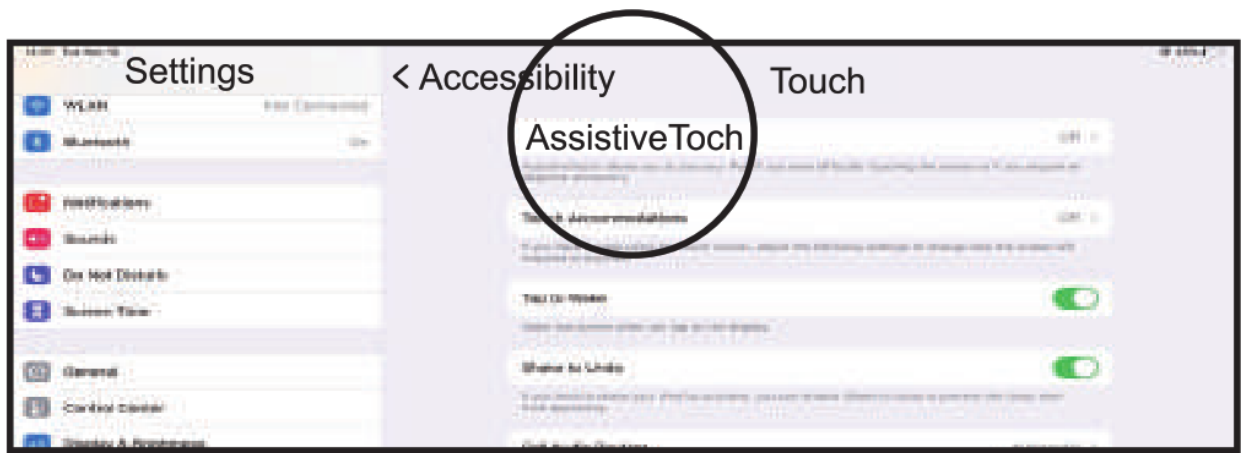
Mac OS system

Please complete the Bluetooth mode installation step OD ①②③ before pairing.

4. Click "System Preferences" on Mac.



5. Click "Bluetooth" in "System Preferences".



6. Turn on Assistive Touch.



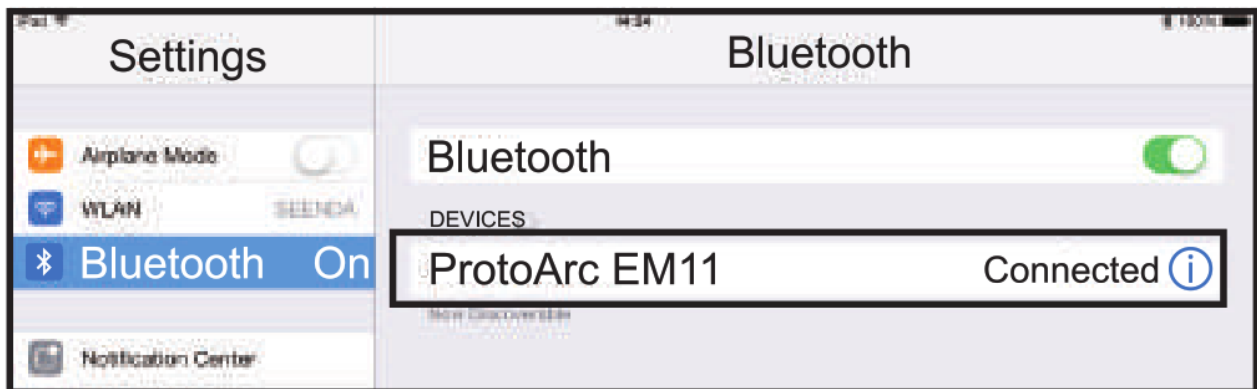
7. Click Settings on the device and turn on Bluetooth.



8. Your computer will automatically search for "ProtoArc EM11" and then click "Pair", complete the pairing.



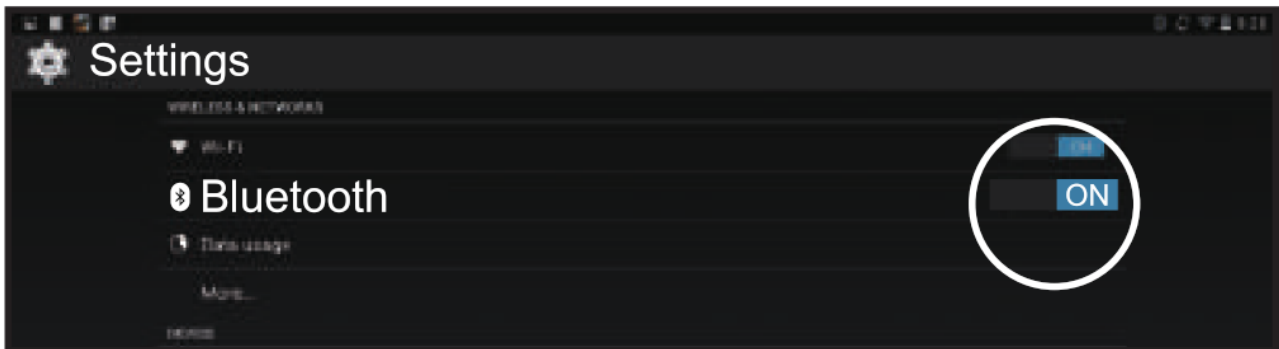
9. "ProtoArc EM11" is connected and can be used normally.



Android System

Please complete the Bluetooth mode installation step ①②③ before pairing.

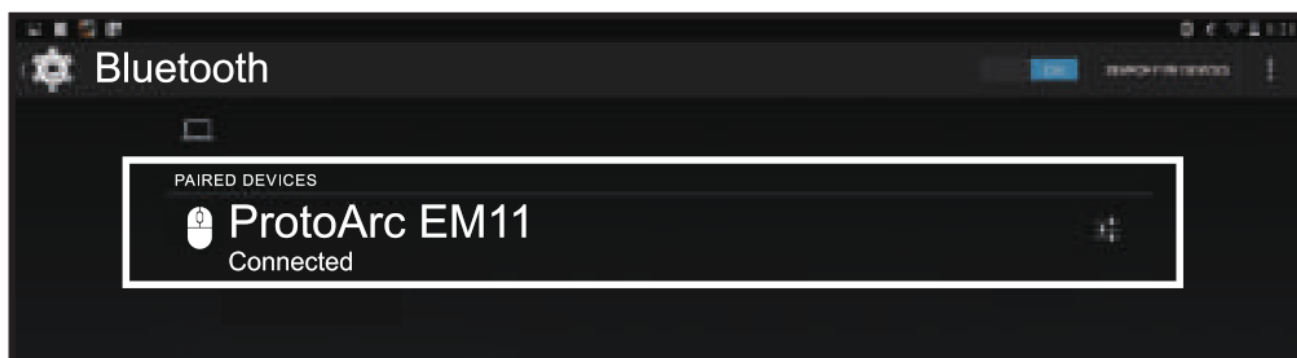
4. Click Settings on the device and turn on Bluetooth.



5. Your computer will automatically search for "ProtoArc EM11" and then click "Pair", complete the pairing.

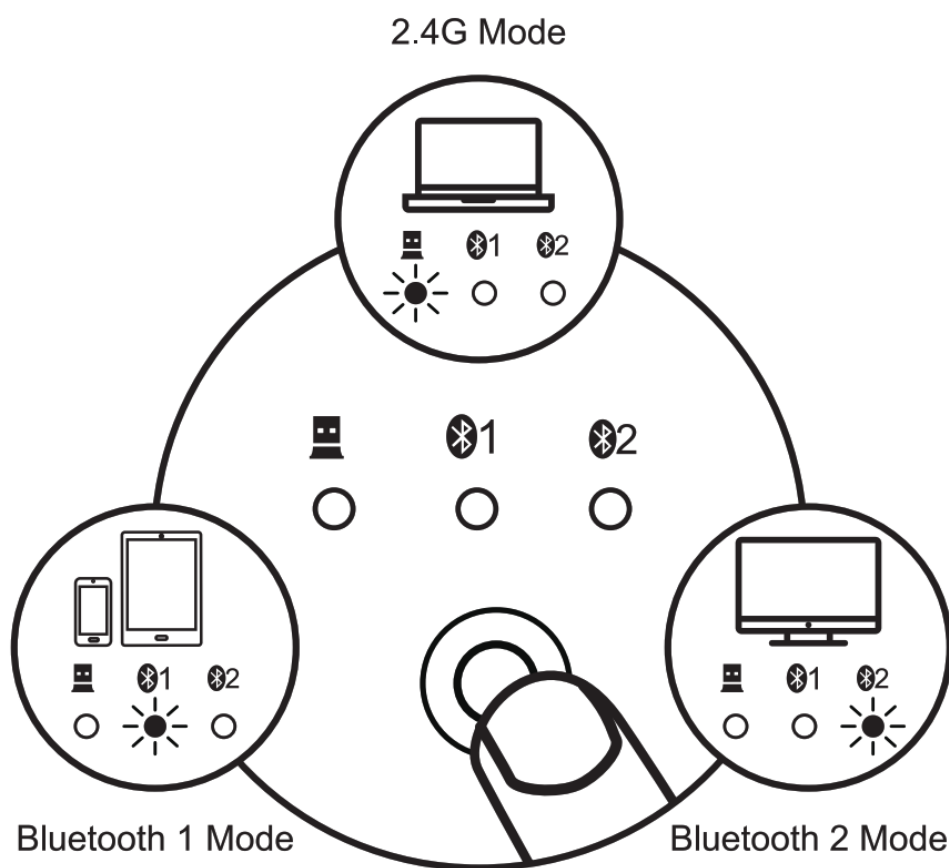


6. "ProtoArc EM11" is connected and can be used normally.



How to Switch Connection Mode

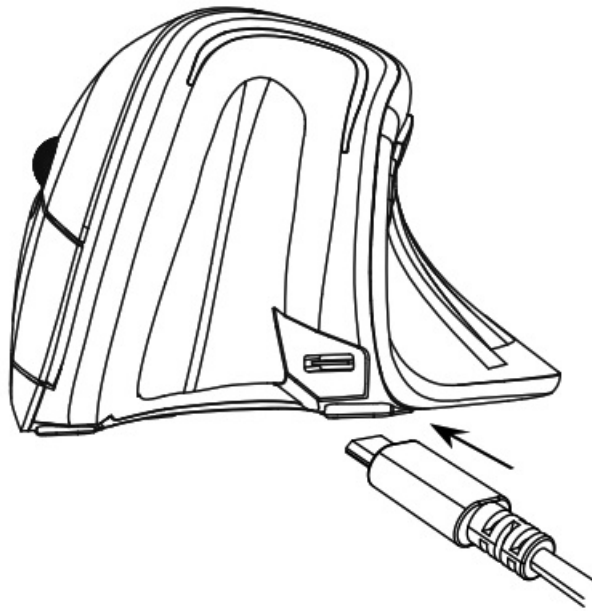
After Bluetooth and USB wireless mode is connected, press USB/Bluetooth mode switch button to switch between different devices. One press can only switch mode once. You may need to press it twice to get the mode you want.



Press USB/Bluetooth mode switch button

How to Charge the Mouse

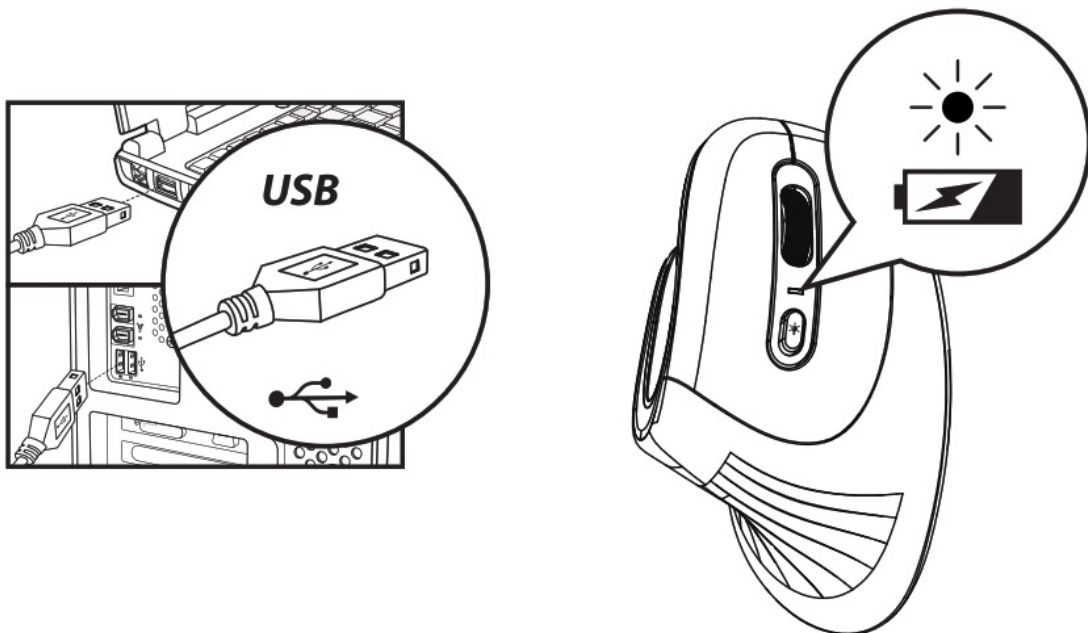
1. When the battery power is low, please charge the mouse with the included Type-C charging cable(by inserting the Type-C charging cable into USB port of the computer).



Note: Best to use original data transmission cable.

2. When the power is low, the Charging indicator light flashes quickly, once a second, flashing 10 times to warn the product of low power, please use the charging cable to charge.

The indicator light is always on blue during charging, the blue light turns off when charging is complete after 3-4 hours.



Specifications

Basic Parameters

Engine: Optical

DPI: 1000-1600-2400

Lithium battery: 930mAh

Click Life: 3 million+

Dimension: 138 x 69.2 x 68.1mm

Weight: 112 ± 10 grams

Bluetooth Transmission Parameters

Transmission distance: 8m

Working Voltage: 3.7V

Working Current: 5mA

Frequency: 125Hz
System requirements: Bluetooth-enabled device;
Windows 8, Windows 10;
Mac OS X 10.12 or higher version;
Android 4.3 or higher version.

2.4G Wireless Transmission Parameters

Transmission distance: 8m
Working Voltage: 3.7V
Working Current: 5mA
Frequency: 250Hz
System requirements: Devices with USB ports;
Windows XP, Windows 7;
Windows 8, Windows 10;
Mac OS X 10.12 or higher version.

Package List

- 1 x Wireless Mouse
- 1 x Type-C charging cable
- 1 x USB receiver
- 1 x User manual



Documents / Resources

<div><div>ProtoArc</div><div>User Manual</div><div>2.4G+Bluetooth Dual-Mode RGB Ergonomic Mouse</div><div>EM11</div></div>	<div>ProtoArc EM11 Bluetooth Vertical Ergo Mouse [pdf] User Manual</div> <div>EM11, Bluetooth Vertical Ergo Mouse, Vertical Ergo Mouse, Bluetooth Ergo Mouse, Ergo Mouse, Mouse</div>
--	---