

ProtoArc
ProtoArc EM05 NL 2.4G
plus Bluetooth plus
Bluetooth Wireless
Vertical Trackball Mouse



ProtoArc EM05 NL 2.4G plus Bluetooth plus Bluetooth Wireless Vertical Trackball Mouse User Manual

[Home](#) » [ProtoArc](#) » ProtoArc EM05 NL 2.4G plus Bluetooth plus Bluetooth Wireless Vertical Trackball Mouse User Manual 

Contents

- [1 ProtoArc EM05 NL 2.4G plus Bluetooth plus Bluetooth Wireless Vertical Trackball Mouse](#)
- [2 Product Features](#)
- [3 2.4G USB Connection](#)
- [4 Bluetooth Connection](#)
- [5 Charging Guide](#)
- [6 Switch Connection Channel](#)
- [7 Data Parameters](#)
- [8 Packing List](#)
- [9 EU Declaration of Conformity](#)
- [10 Documents / Resources](#)
 - [10.1 References](#)
- [11 Related Posts](#)

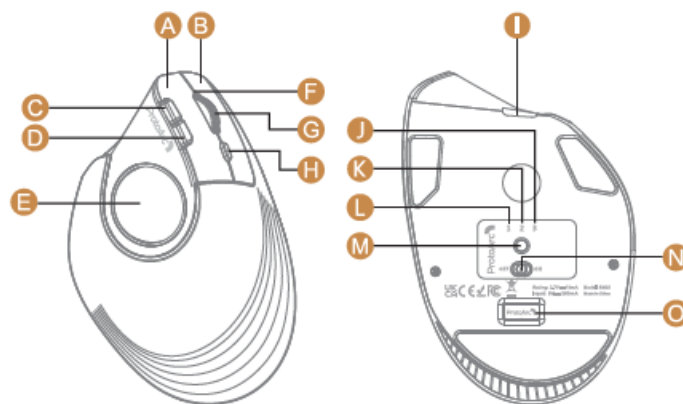
ProtoArc 

ProtoArc EM05 NL 2.4G plus Bluetooth plus Bluetooth Wireless Vertical Trackball Mouse



Product Features

•



A Left Button

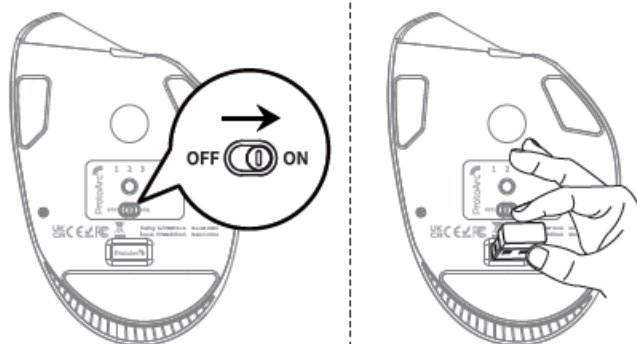
- B Forward Button
- C Trackball
- D TYPE-C Charging Port
- E Bluetooth 1 Indicator
- F Channel Switch Button
- G USB Receiver Right Button
- H Backward Button
- I Charging Indicator
- J PI Indicator
- K DPI Button
- L Bluetooth
- M Indicator 2.4G Indicator
- N Power Switch
- O Scroll Wheel

DPI Button

Press the DPI button to adjust the cursor sensitivity. A single flash of indicator light corresponds to DPI level 200, two to 400, three to 800, four to 1200, and five to 1600.

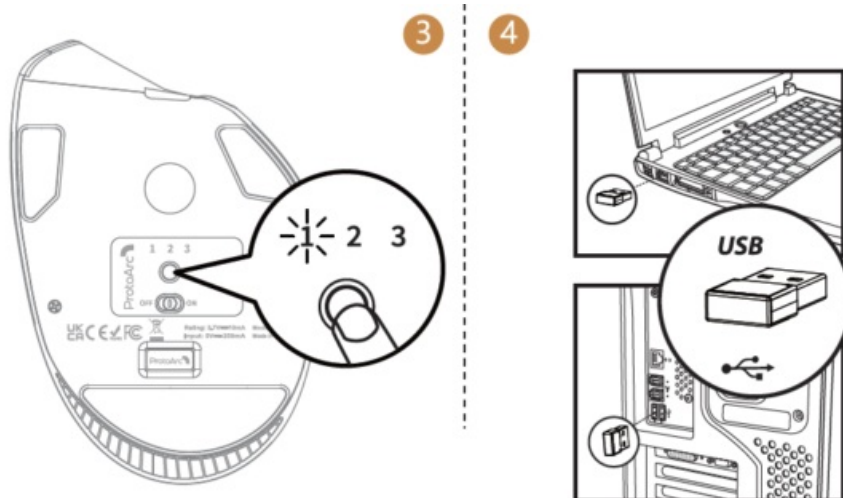
2.4G USB Connection

1. Turn on the power switch to ON.
2. Take out the receiver.
- 3.



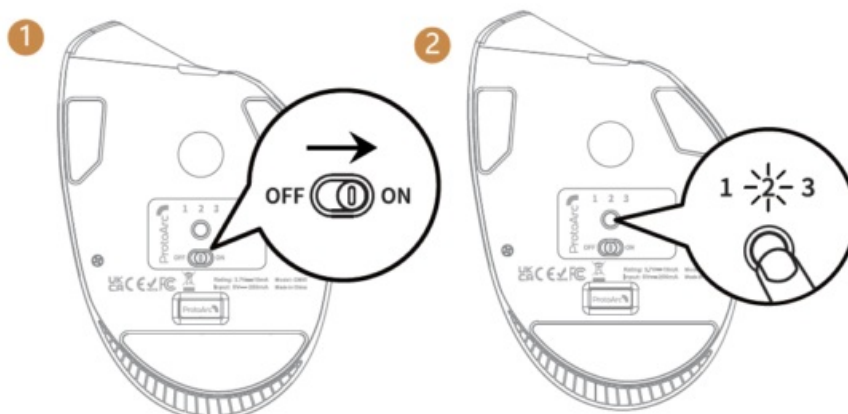
Press the channel switch button until the white light 1 is on and enter 2.4G USB channel.

4. Insert the usb receiver into your computer's usb port.



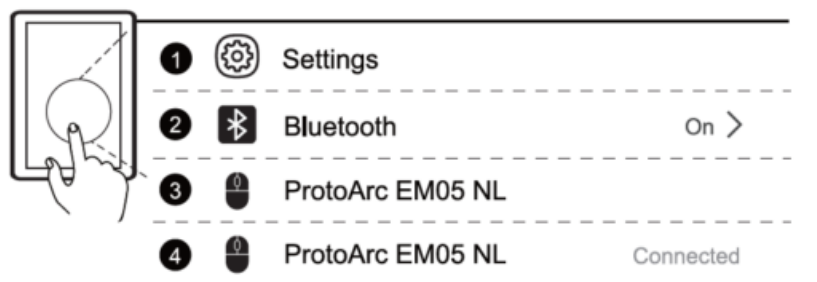
Bluetooth Connection

1. Turn on the power switch to ON.
2. Press the channel switch button to 2 or 3 Bluetooth channel and the white light flash slowly. Press and hold the channel switch button for 3~5 seconds until the white light flashes quickly, and the mouse enters the Bluetooth pairing mode.



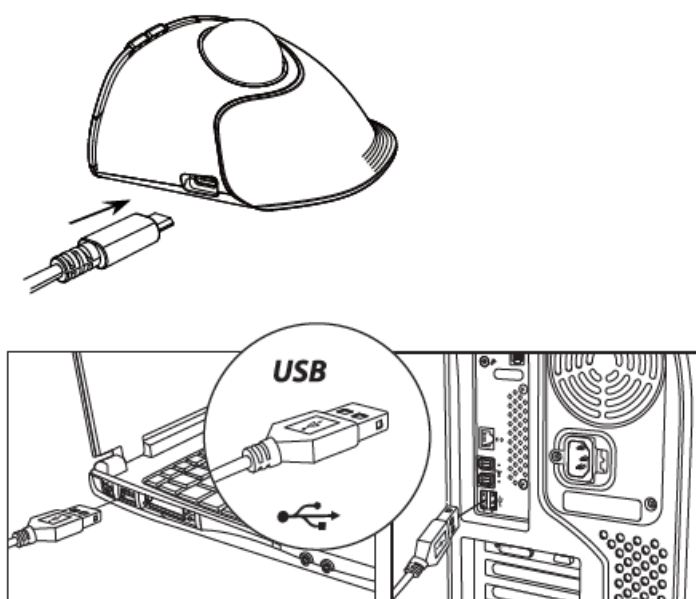
3. Turn on the Bluetooth settings on your device, search or select "ProtoArc EM05 NL" and start Bluetooth pairing until the connection is completed.

3



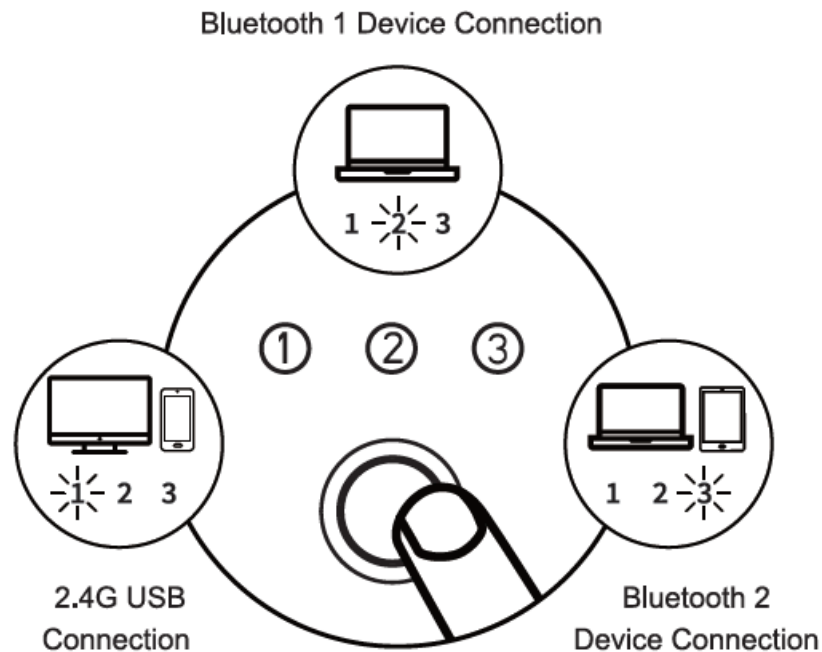
Charging Guide

1. When the mouse power is low, the charging indicator and the corresponding channel indicator flash until turned off.
2. Insert the Type-C charging cable into the mouse, the red light stays on during charging.
3. The charging time is about 1-3.5 hours and the indicator light will turn green after being fully charged.
Please use the charging cable included with the mouse to charge. If using another charging cable, please make sure it is a USB-A to Type-C cable.



Switch Connection Channel

After BT1, B12 and 2.4G USB channel is connected, press the channel switch button on the bottom of the mouse to switch between multiple devices.



Press the channel switch button on the bottom of the mouse to switch between 3 devices.

Data Parameters

• Basic parameter:

- Movement Detection
- Technology: Optical Lithium battery
- Capacity: 500mA DPI: 200-[400-800-1200](#)-1600
- Click life: 3 million+ Dimension: 5.78 * 3.95 * 2.66 in
- Weight: 5.9 oz (168g)

Bluetooth transmission parameters

- Transmission distance: 10m
- Working voltage: 3.7V
- Working current: 3.5mA
- Reaction rate: 115Hz
- System requirement:

Bluetooth-enable device

- Windows 8, Windows 10 or higher version
- Mac OS x 10.10 or higher version
- Android 4.3 or higher version 2.4G transmission parameters:
- Transmission distance: 10m
- Working voltage: 3.7V
- Working current: 2.5mA
- Reaction rate: 250Hz

System requirement

- An available
- USB port Windows XP, Windows 7, Windows 8, Windows 10 or higher version Mac OS x 10.10 or higher version

Packing List

- 1 x Wireless Mouse
- 1 x USB Receiver
- 1 x Type C Charging Cable
- 1 x User Manual

Safety Warning

IMPORTANT: To reduce risk of fire, electric shock, or injury, follow these safety instructions.

- Charging Safely: Use only the provided cable. Charge in a well ventilated, dry area away from inflammable materials.
- Battery Handling: Do not attempt to replace the item's lithium battery. Battery replacement should be conducted by qualified personnel to prevent hazards.
- Heat Exposure: Avoid leaving the item in high-temperature environments or in direct sunlight, which could result in a fire hazard.
- Liquid Exposure: Keep the item away from water and liquids.
- Do not use if wet until thoroughly dried.
- Damage and Leakage: Cease usage and consult customer service if the item is damaged or the battery leaks.
- Correct Disposal: Follow local regulations for disposing of electronic devices and batteries.
- Do not dispose of with household waste.
- Radio Frequency Interference: This device may cause interference with other electronics.
- Keep a safe distance from sensitive devices.
- Child Safety: Keep the item and its components out of reach of children to avoid choking or battery ingestion hazards. Never allow children to handle the item unsupervised.
- CAUTION: Non-compliance with the above warnings can lead to serious injury or property damage.
- For further assistance or information, please contact our customer service.

Emergency Contact: +1 [886-287-6188](tel:886-287-6188) (United States)

EU Declaration of Conformity

- Declared Object: 2.4G+Bluetooth+Bluetooth Wireless Vertical Trackball Mouse
- Model: EM05 NL
- Rating: 3.7V  10mA
- Input: 5V  250mA
- Place of Production: Made in China

- Manufacturer: Dongguan Togran Electronics Technology Co.,Ltd
- Email: sales08@togran.com
- Address: No.110, Shidan Middle Road, Shijie Town, Dongguan City, Guangdong Province, China, 523290
- European Representative: EC REP
- Business name: g.L.L. GmbH
- Business address: Bauernvogtkoppel, 55c, 22393, Hamburg, Germany
- Email: g.L.L.DE@outlook.com
- Tel: +49 162 3305764
- UK REP Business name: AMANTO INTERNATIONAL TRADE LIMITED
- Business address: The Imperial, 31-33 St Stephens Gardens, Notting Hill, London, United Kingdom, W2 5NA
- Email: AmantoUK@outlook.com
- Tel: +44 7921 801 942
- It is our sole responsibility to declare that the above products are in full compliance with Directive 2014/53/EU, 2011/65/EU (as amended)
- Position: Signature:
- Date of Sign: EU agent name:
- Date of Sign: Managing
- Director Saler 2022.1.5 Tong Jia 2022.1.5

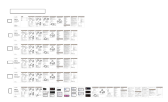
www.protoarc.com

US: support@protoarc.com

UK: support-uk@protoarc.com

United States: (+1) [866-287-6188](tel:866-287-6188) Monday-Friday: 10am-1pm, 2pm-7pm (Eastern Time) *Closed during Holidays

Documents / Resources

	<p>ProtoArc EM05 NL 2.4G plus Bluetooth plus Bluetooth Wireless Vertical Trackball Mouse [pdf] User Manual</p> <p>NL, EM05 NL 2.4G plus Bluetooth plus Bluetooth Wireless Vertical Trackball Mouse, EM05 NL, 2.4G plus Bluetooth plus Bluetooth Wireless Vertical Trackball Mouse, Bluetooth plus Bluetooth Wireless Vertical Trackball Mouse, Bluetooth Wireless Vertical Trackball Mouse, Wireless Vertical Trackball Mouse, Vertical Trackball Mouse, Trackball Mouse, Mouse</p>
---	---

References

- [User Manual](#)

[Manuals+](#), [Privacy Policy](#)

This website is an independent publication and is neither affiliated with nor endorsed by any of the trademark owners. The "Bluetooth®" word mark and logos are registered trademarks owned by Bluetooth SIG, Inc. The "Wi-Fi®" word mark and logos are registered trademarks owned by the Wi-Fi Alliance. Any use of these marks on this website does not imply any affiliation with or endorsement.