

ProtoArc EM05 2.4G Plus Bluetooth Plus Bluetooth Wireless Vertical RGB Trackball Mouse



ProtoArc EM05 2.4G Plus Bluetooth Plus Bluetooth Wireless Vertical RGB Trackball Mouse User Manual

[Home](#) » [ProtoArc](#) » ProtoArc EM05 2.4G Plus Bluetooth Plus Bluetooth Wireless Vertical RGB Trackball Mouse User Manual 

Contents

- [1 ProtoArc EM05 2.4G Plus Bluetooth Plus Bluetooth Wireless Vertical RGB Trackball Mouse](#)
- [2 Specifications](#)
- [3 Product Features](#)
- [4 2.4G USB Connection](#)
- [5 Bluetooth Connection](#)
- [6 Charging](#)
- [7 Switch Connection Channel](#)
- [8 Data Parameters](#)
- [9 Packing List](#)
- [10 FAQ](#)
- [11 Documents / Resources](#)
 - [11.1 References](#)



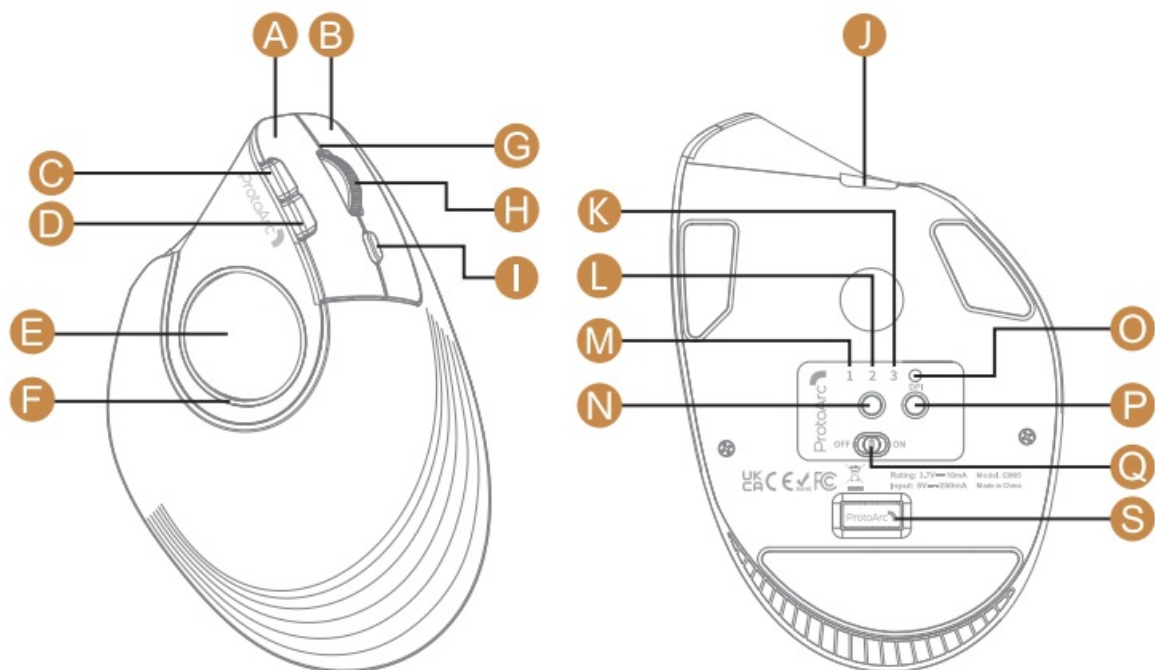
ProtoArc EM05 2.4G Plus Bluetooth Plus Bluetooth Wireless Vertical RGB Trackball Mouse



Specifications

- **Movement Detection Technology:** Optical
- **Lithium Battery Capacity:** 930mA
- **DPI:** 200-400-800-1200-1600
- **Click Life:** 3 million+
- **Dimension:** 5.78 x 3.95 x 2.66 in
- **Weight:** 5.9 oz (168g)

Product Features



1. Left Button
2. Right Button
3. Forward Button
4. Backward Button
5. Trackball
6. Led Rim Light
7. Charging Indicator
8. Scroll Wheel
9. Light Switch Button
10. TYPE-C Charging Port
11. Bluetooth 2 Indicator
12. Bluetooth 1 Indicator
13. 2.4G Indicator
14. Channel Switch Button
15. DPI Indicator
16. DPI Button
17. Power Switch
18. USB Receiver

DPI Button

Press the DPI button to adjust the cursor sensitivity. A single flash of indicator light corresponds to DPI level 200, two to 400, three to 800, four to 1200, and five to 1600.

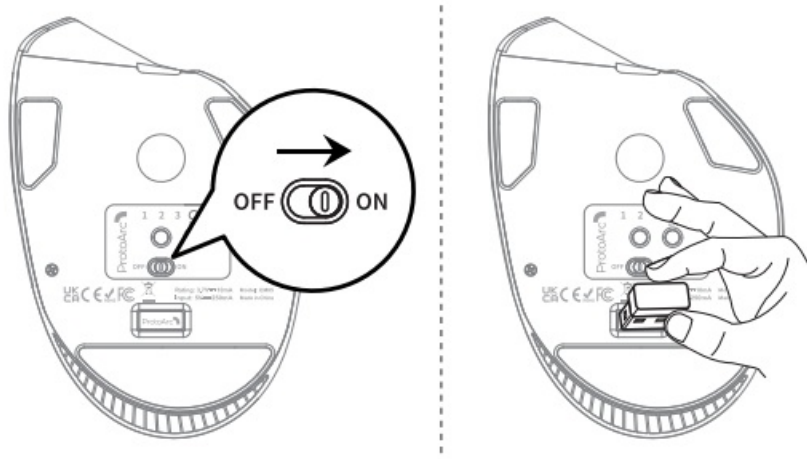
Light Mode:

When the mouse is connected to the device normally, the light will be off when the mouse is not in use for 30 seconds, and the light will light up again when the mouse is awakened.

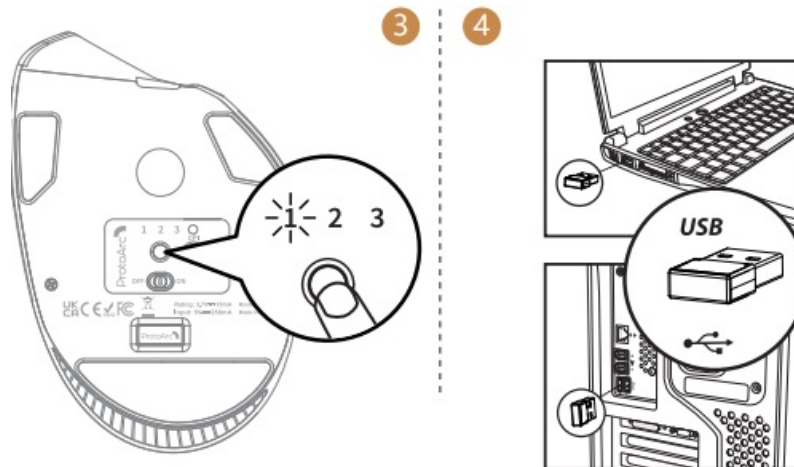
Light Effect Mode

Streamer / Breathing / Steady On / Neon / Off.

2.4G USB Connection



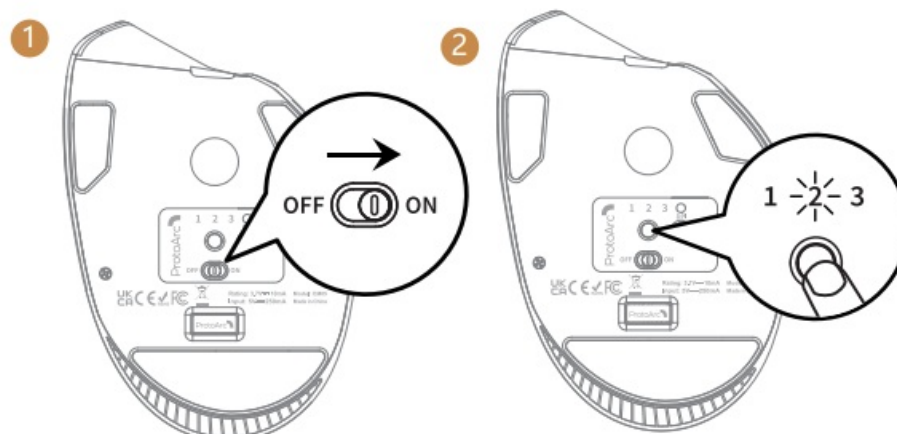
1. Turn on the power switch to ON.
2. Take out the receiver.



3. Press the channel switch button until the white light is on and enter the 2.4G USB channel.
4. Insert the USB receiver into your computer's USB port.

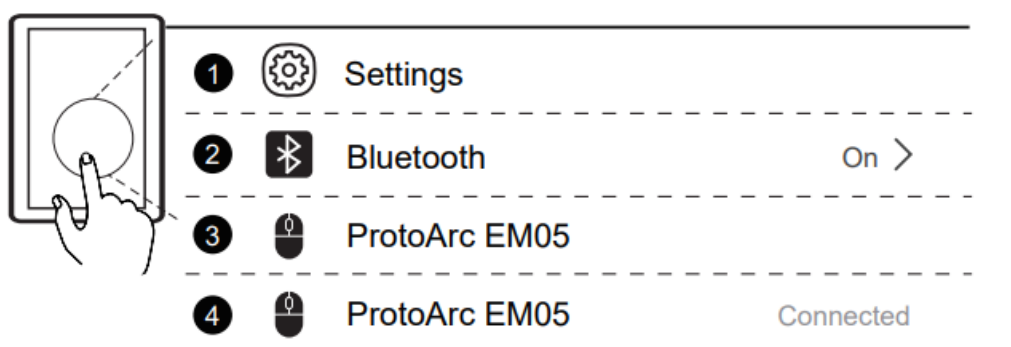
Bluetooth Connection

1. Turn on the power switch to ON.
2. Press the channel switch button to or Bluetooth channel and the white light flash slowly.
Press and hold the channel switch button for 3~5 seconds until the white light flashes quickly, and the mouse enters the Bluetooth paring mode.



3. Turn on the Bluetooth settings on your device, search or select “ProtoArc EM05” and start Bluetooth pairing until the connection is completed.

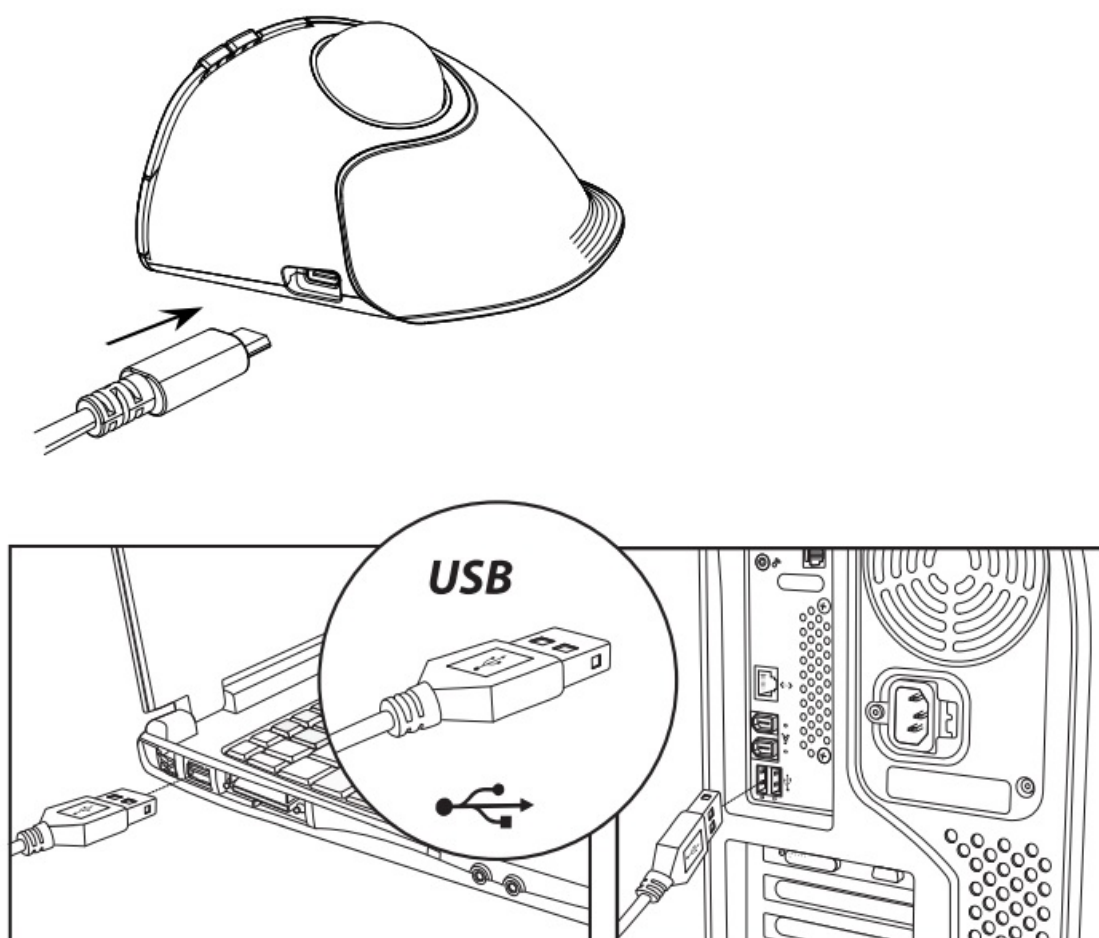
3



Charging

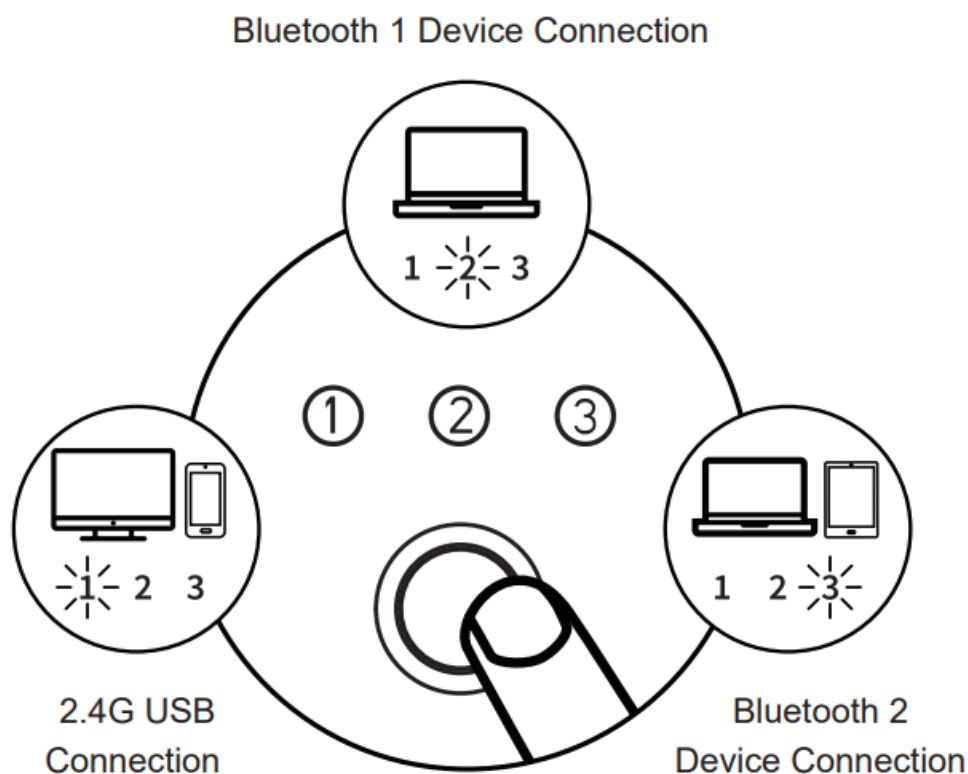
1. When the mouse power is low, the charging indicator and the corresponding channel indicator flash until turned off.
2. Insert the Type-C charging cable into the mouse, the red light stays on during charging.
3. The charging time is about 1-3.5 hours and the indicator light will turn green after being fully charged.

Please use the charging cable included with the mouse to charge. If using another charging cable, please make sure it is a USB-A to Type-C cable.



Switch Connection Channel

After BT1, BT2, and 2.4G USB channels is connected, press the channel switch button on the bottom of the mouse to switch between multiple devices.



Press the channel switch button on the bottom of the mouse to switch between 3 devices.

Data Parameters

- **Basic parameter:**

- **Movement Detection Technology:** Optical
- **Lithium battery Capacity:** 930mA
- **DPI:** 200-400-800-1200-1600
- **Click life:** 3 million+
- **Dimension:** 5.78 * 3.95 * 2.66 in
- **Weight:** 5.9 oz (168g)

- **Bluetooth transmission parameters:**

- **Transmission distance:** 10m
- **Working voltage:** 3.7V
- **Working current:** 12.5mA (light on) 3.5mA (light off)
- **Reaction rate:** 115Hz

- **System requirement:**

- Bluetooth-enable device
- Windows 8, Windows 10 or higher version
- Mac OS x 10.10 or higher version
- Android 4.3 or higher version

- **2.4G transmission parameters:**

- **Transmission distance:** 20m
- **Working voltage:** 3.7V

- **Working current:** 12mA (light on) 2.5mA (light off)
- **Reaction rate:** 250Hz
- **System requirement:**
 - An available USB port
 - Windows XP, Windows 7, Windows 8, Windows 10 or higher version Mac OS x 10.10 or higher version.

Packing List

- 1 x Wireless Mouse
- 1 x USB Receiver
- 1 x Type C Charging Cable
- 1 x User Manual

support@protoarc.com

www.protoarc.com

United States: (+1) 866-287-6188

Monday-Friday: 10 am-1 pm, 2 pm-7 pm (Eastern Time) Closed during Holidays

FAQ


Q: How do I adjust the cursor sensitivity?

A: Press the DPI button to cycle through different sensitivity levels indicated by the flashing lights.

Q: How do I know if the mouse is connected normally?

A: The light will be off after 30 seconds of inactivity and light up again when awakened.

Documents / Resources

 <p>EM05</p> <p>User Manual</p> <p><small>2.4G+Bluetooth+Bluetooth Wireless+ Vertical RGB Trackball Mouse</small></p> <p><small>support@protoarc.com www.protoarc.com United States: (+1) 866-287-6188 Monday-Friday: 10am-1pm, 2pm-7pm (Eastern Time) Closed during Holidays</small></p>	<p>ProtoArc EM05 2.4G Plus Bluetooth Plus Bluetooth Wireless Vertical RGB Trackball Mouse [pdf] User Manual</p> <p>EM05 2.4G Plus Bluetooth Plus Bluetooth Wireless Vertical RGB Trackball Mouse, EM05, 2.4G Plus Bluetooth Plus Bluetooth Wireless Vertical RGB Trackball Mouse, Bluetooth Plus Bluetooth Wireless Vertical RGB Trackball Mouse, Bluetooth Wireless Vertical RGB Trackball Mouse, Wireless Vertical RGB Trackball Mouse, Vertical RGB Trackball Mouse, RGB Trackball Mouse</p>
---	---

References

-  [ProtoArc® Better Workspace: Portable & Comfortable & Efficient](#)
- [User Manual](#)

Manuals+. Privacy Policy

This website is an independent publication and is neither affiliated with nor endorsed by any of the trademark owners. The "Bluetooth®" word mark and logos are registered trademarks owned by Bluetooth SIG, Inc. The "Wi-Fi®" word mark and logos are registered trademarks owned by the Wi-Fi Alliance. Any use of these marks on this website does not imply any affiliation with or endorsement.