



ProtoArc EM04 Dual Mode Rechargeable Trackball Mouse User Manual

[Home](#) » [ProtoArc](#) » ProtoArc EM04 Dual Mode Rechargeable Trackball Mouse User Manual 

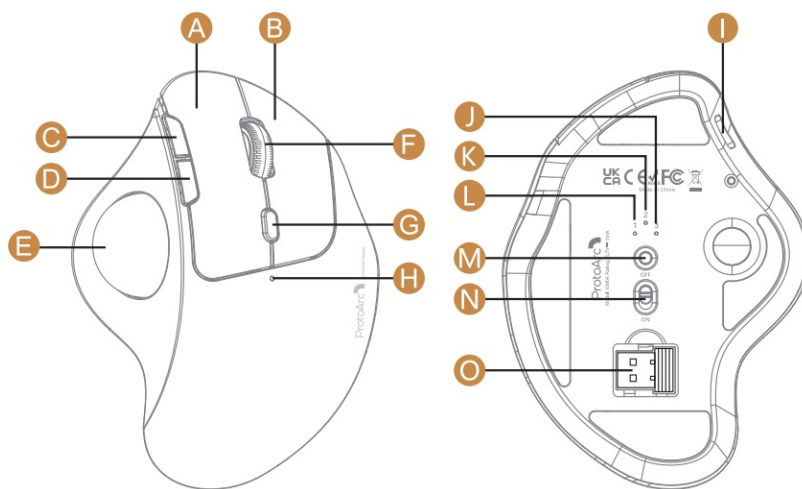
ProtoArc EM04 Dual Mode Rechargeable Trackball Mouse User Manual



Contents

- 1 Product Features
- 2 4G USB Connection
- 3 Bluetooth Connection
- 4 Charging Guide
- 5 How to switch connection mode
- 6 Data parameters
- 7 Packing List
- 8 Support
- 9 Documents / Resources
 - 9.1 References
- 10 Related Posts

Product Features



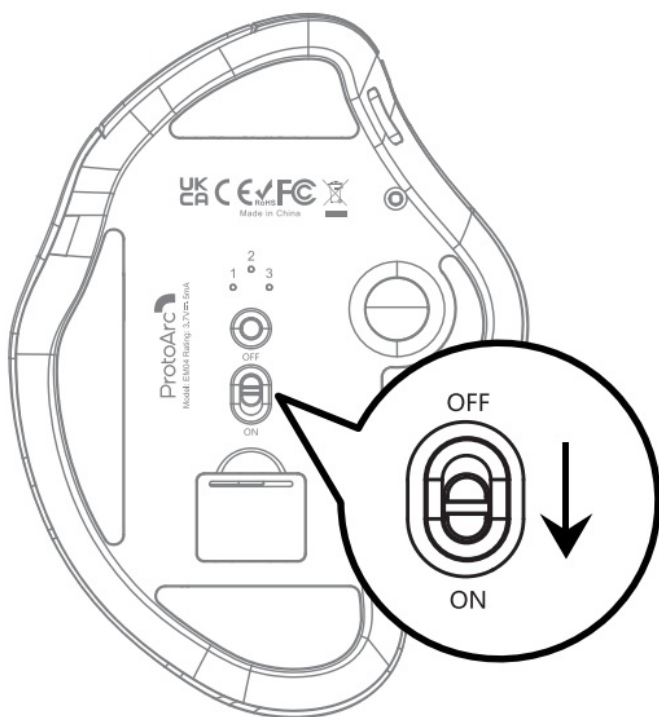
- A** Left Button
- B** Right Button
- C** Forward Button
- D** Backward Button
- E** Trackball
- F** Scroll Wheel
- G** DPI Button
- H** Charging / DPI Indicator
- I** TYPE-C Charging Port
- J** Bluetooth 2 Indicator
- K** Bluetooth 1 Indicator
- L** 2.4G Wireless Indicator
- M** Channel Switch Button
- N** Power Switch
- O** USB Receiver

DPI Button

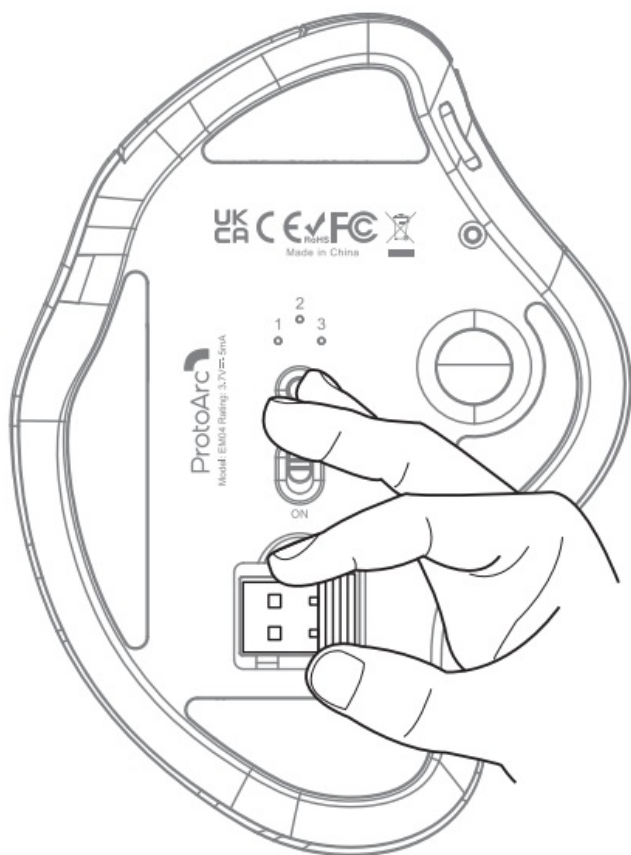
Press the DPI button to adjust the cursor sensitivity. A single flash of indicator light corresponds to DPI level 200, two to 400, three to 800, four to 1200, and five to 1600.

4G USB Connection

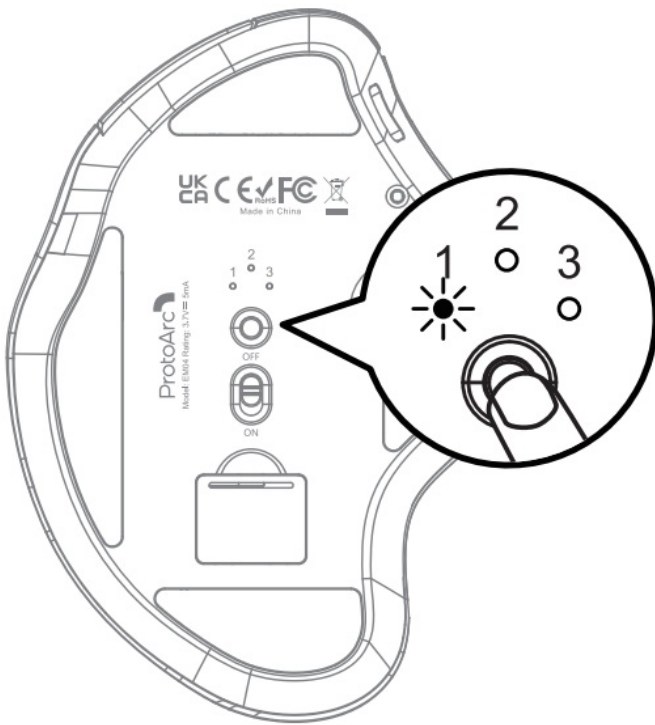
1. Turn the power switch to “**ON**”.



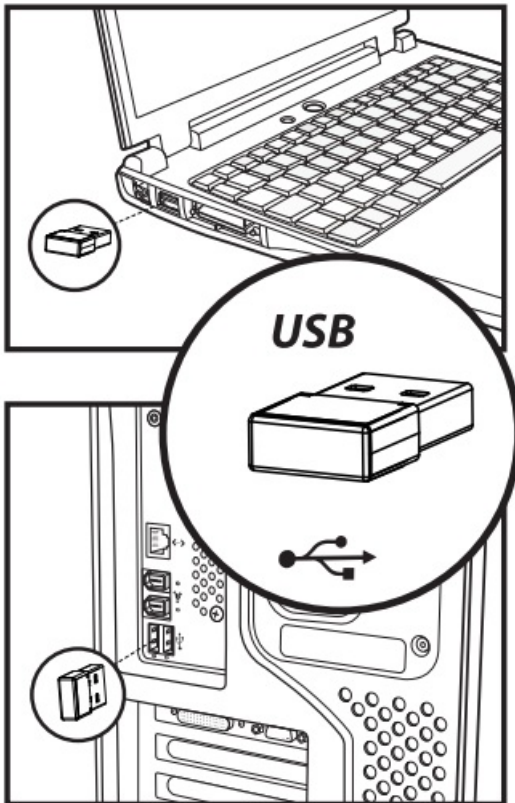
2. Take out the receiver.



3. Press the channel switch button until the channel 1 flashes a white light, and the mouse enters 2.4G wireless mode.



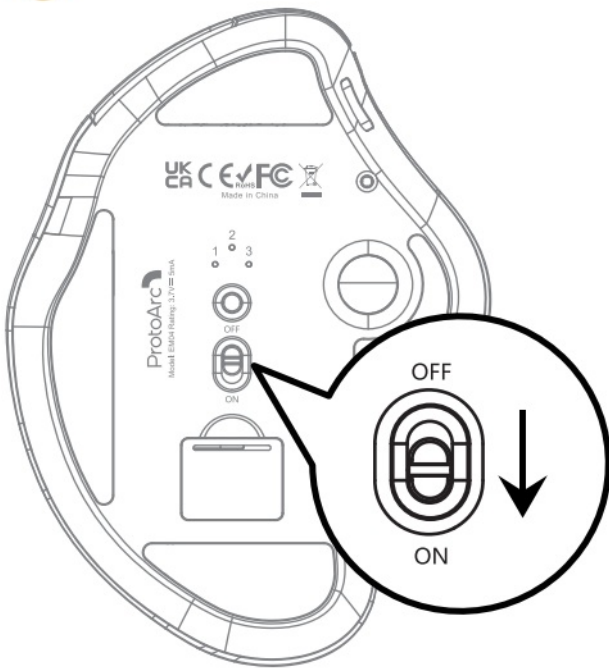
4. Insert the usb receiver into your computer's usb port.



Bluetooth Connection

1. Turn the power switch to “ON”.

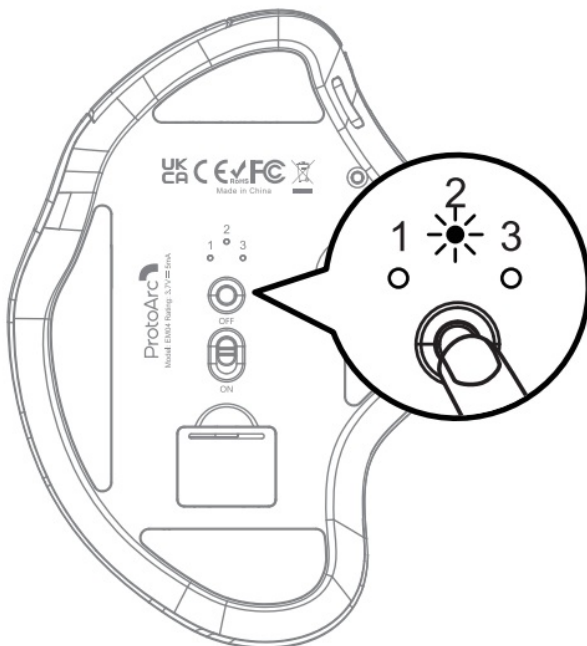
1







2. Press the channel switch button until the channel 2 or channel 3 indicator flash slowly.

Long Press the channel switch button for 3~5 seconds until the white light flashes quickly, and the mouse enters the Bluetooth pairing mode.

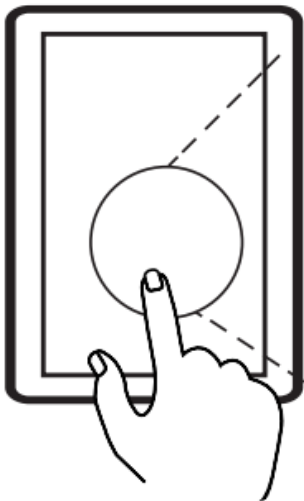
2



1		Settings	
2		Bluetooth	On >
3		ProtoArc EM04	
4		ProtoArc EM04	Connected

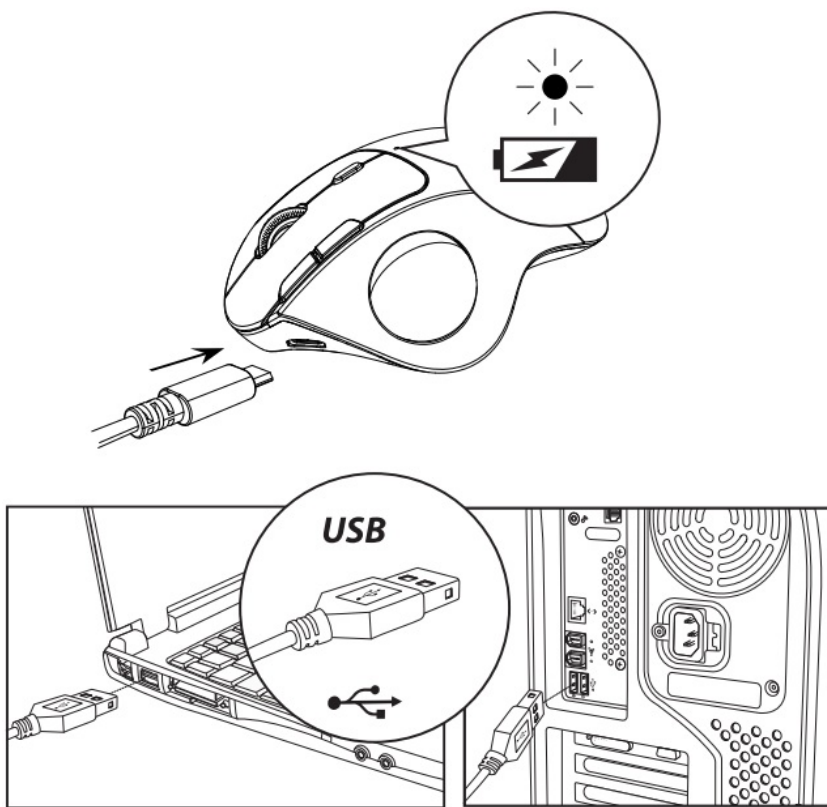
3. Turn on the Bluetooth settings on your device, search or select “**ProtoArc EM04**” and start Bluetooth pairing until the connection is completed.

3



Charging Guide

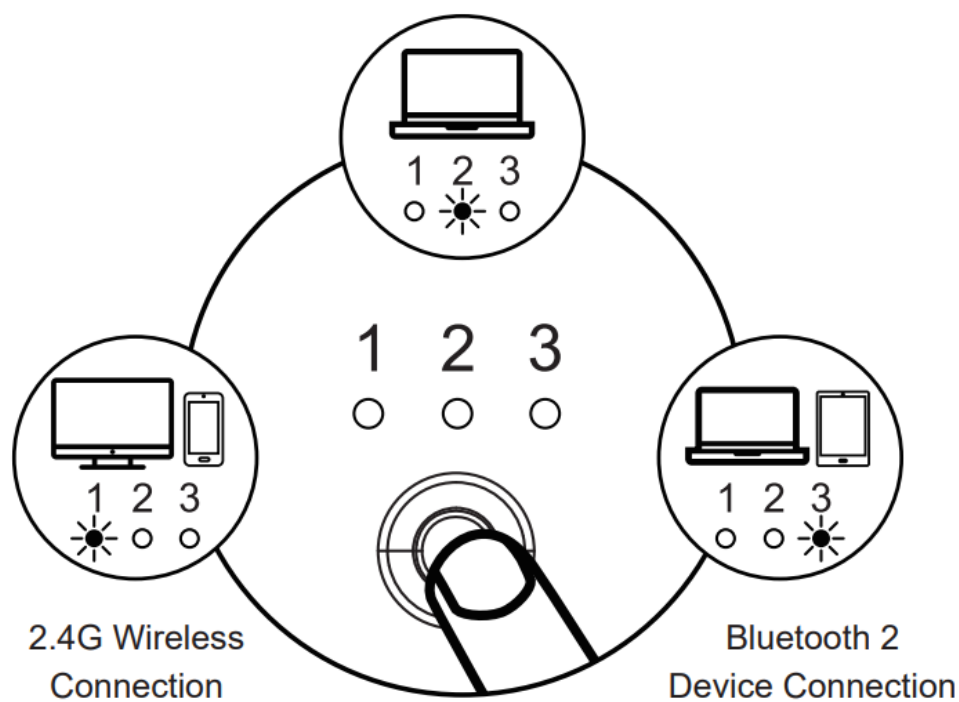
1. When the battery is low, the charging indicator flashes red until it is turned off.
2. Insert the Type-C charging cable into the computer to charge, the red light stays on during charging.
3. The charging time is about 1~3.5 hours and the indicator light turns off when fully charged.



How to switch connection mode

After BT1, BT2 and 2.4G wireless mode is connected, press the channel switch button on the bottom of the mouse to switch between multiple devices.

Bluetooth 1 Device Connection



Data parameters

Basic parameter:

Movement Detection Technology: Optical

Lithium Battery Capacity: 450mAh

DPI: 200-400-800-1200-1600

Click Life: 3 million+

Dimension: 136.8*100.5*52.3mm

Weight: 119g

Bluetooth transmission parameters:

Transmission distance: 10m

Working Voltage: 3.7V

Working current: 8mA

Reaction rate: 125Hz

System requirement:

Bluetooth-enable device

Windows 8, Windows 10 or higher version

Mac OS x 10.10 or higher version

Android 4.3 or higher version

2.4G transmission parameters:

Transmission distance: 20m

Working Voltage: 3.7V

Working current: 10mA

Reaction rate: 250Hz

System requirement:

An available USB port

Windows XP, Windows 7, Windows 8, Windows 10 or higher version Mac OS x 10.10 or higher version

Packing List

- x Wireless Mouse
- x USB Receiver
- x Type C Charging Cable
- x User Manual

Support

support@protoarc.com

www.protoarc.com

ProtoArc 

Documents / Resources

<div>ProtoArc</div> <div>EM04</div> <div>User Manual Dual Mode Rechargeable Trackball Mouse</div> <div><small>support@protoarc.com www.protoarc.com</small></div>	<div>ProtoArc EM04 Dual Mode Rechargeable Trackball Mouse [pdf] User Manual</div> <div>EM04 Dual Mode Rechargeable Trackball Mouse, EM04, Dual Mode Rechargeable Trackball Mouse, Mode Rechargeable Trackball Mouse, Rechargeable Trackball Mouse, Trackball Mouse, Mouse</div>
--	---

References

- [User Manual](#)