

ProtoArc EM01 NL Bluetooth Wireless Rechargeable Trackball Mouse



ProtoArc EM01 NL Bluetooth Wireless Rechargeable Trackball Mouse User Manual

[Home](#) » [ProtoArc](#) » ProtoArc EM01 NL Bluetooth Wireless Rechargeable Trackball Mouse User Manual 

Contents

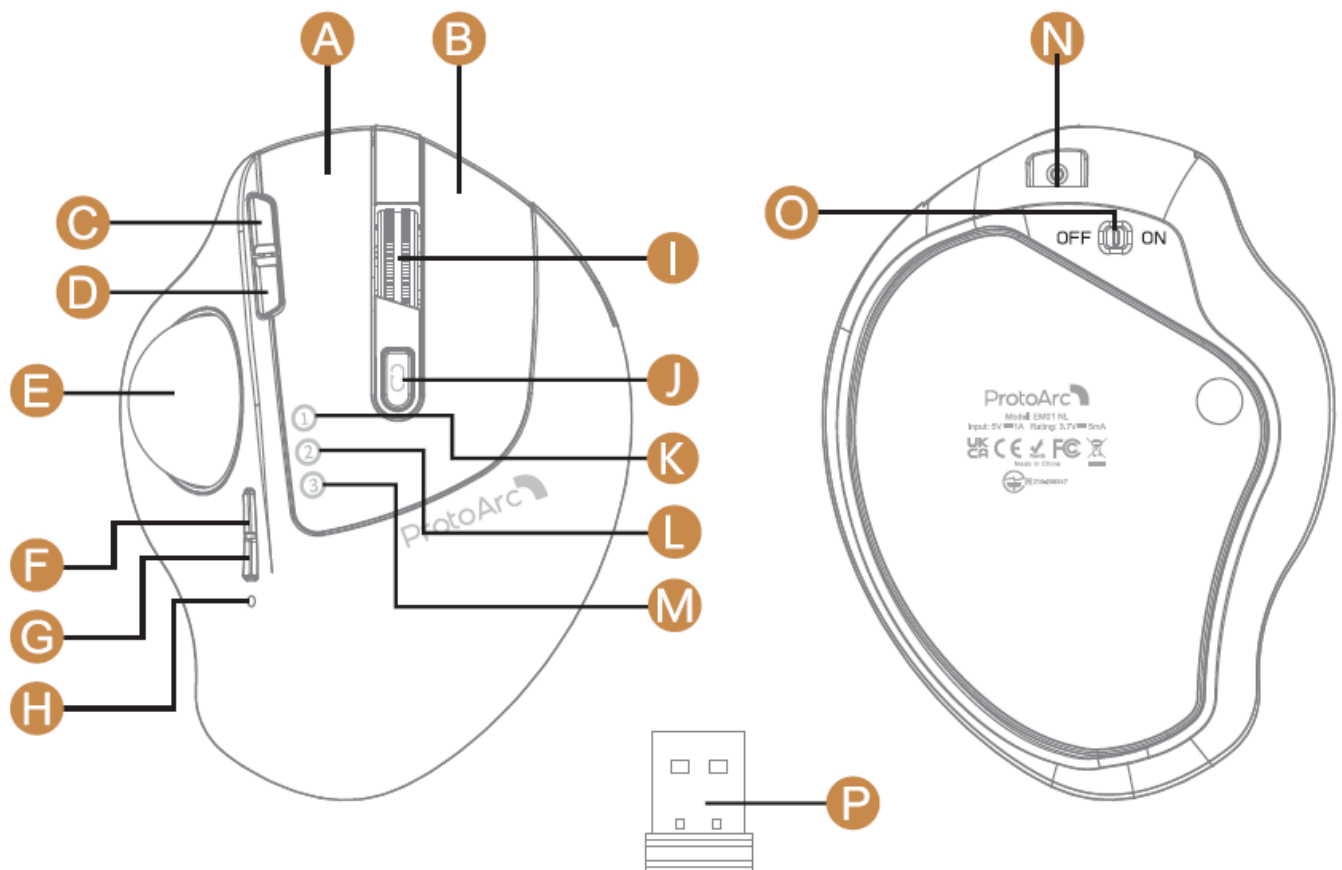
- [1 ProtoArc EM01 NL Bluetooth Wireless Rechargeable Trackball Mouse](#)
- [2 Product Features](#)
- [3 2.4G USB Connection](#)
- [4 Bluetooth Connection](#)
- [5 Charging Guide](#)
- [6 Switch Connection Channel](#)
- [7 Data Parameters](#)
- [8 Packing List](#)
- [9 Documents / Resources](#)
 - [9.1 References](#)



ProtoArc EM01 NL Bluetooth Wireless Rechargeable Trackball Mouse



Product Features



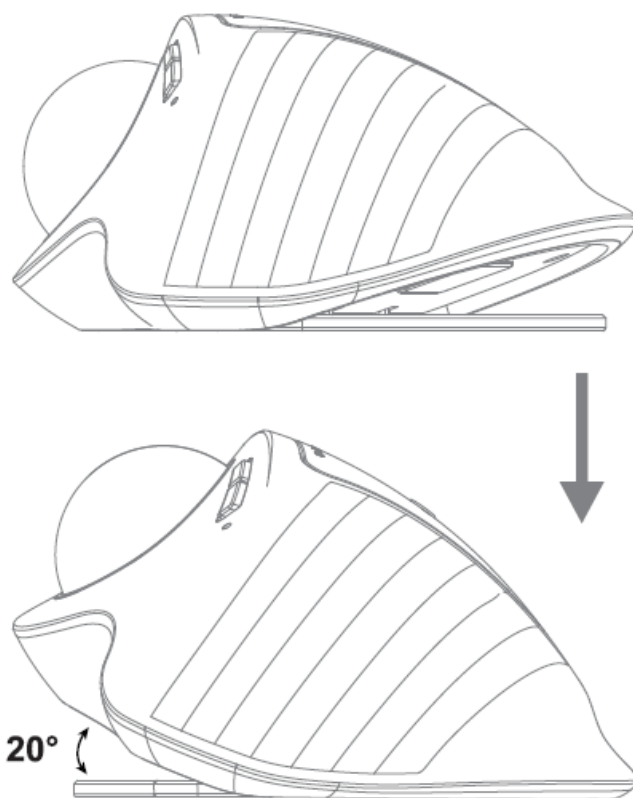
1. Left Button
2. Right Button
3. Forward Button
4. Backward Button
5. Trackball
6. DPI – Button

7. DP| + Button
8. Charging / DPI Indicator
9. Scroll Wheel
10. Channel Switch Button
11. 2.4G Indicator
12. Bluetooth 1 Indicator
13. Bluetooth 2 Indicator
14. TYPE-C Charging Port
15. Power Switch
16. USB Receiver

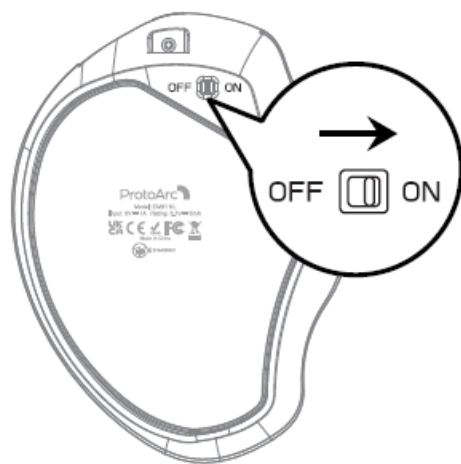
DPI +/- Button

The factory default DPI value is 400, press the DP|+ or DP|- button to adjust the DPI. A single flash of the red indicator light corresponds to a DPI level of 200, two flashes indicate 400, three flashes indicate 800, four flashes indicate 1200, and five flashes indicate 1600.

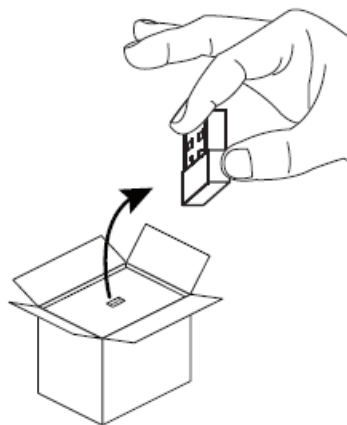
Adjustable mouse grip angle



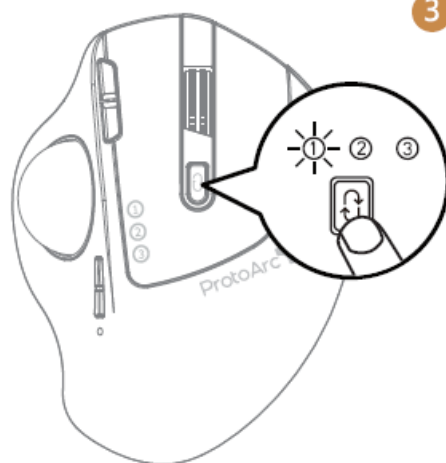
2.4G USB Connection



1

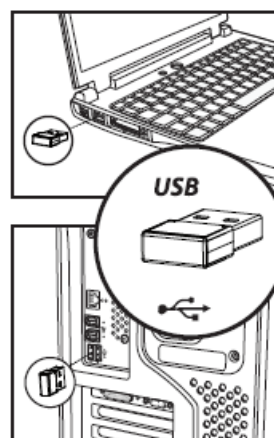


2



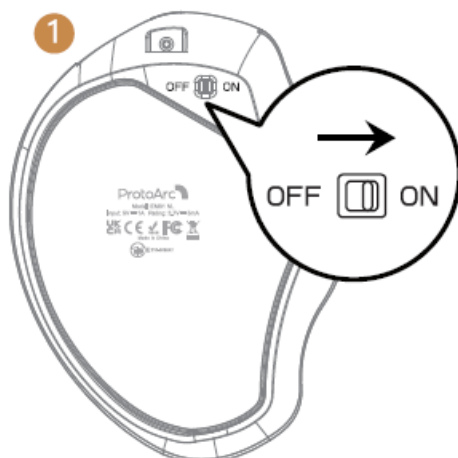
3

4

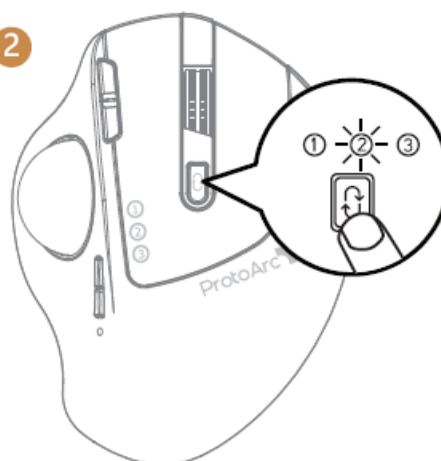


1. Turn on the power switch to ON.
2. Take out the receiver.
3. Press the channel switch button until the white light 1 is on and enter 2.4G USB channel.
4. Insert the usb receiver into your computer's usb port.

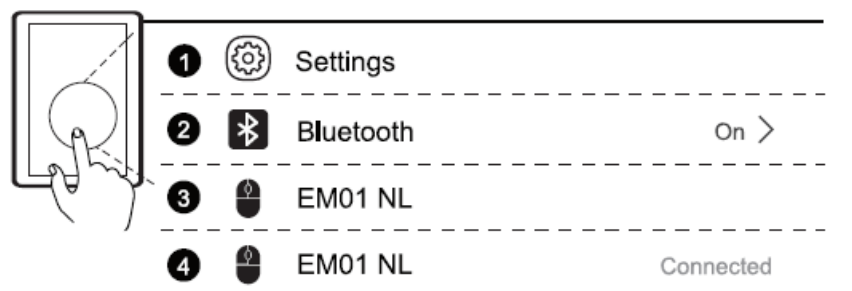
Bluetooth Connection



2



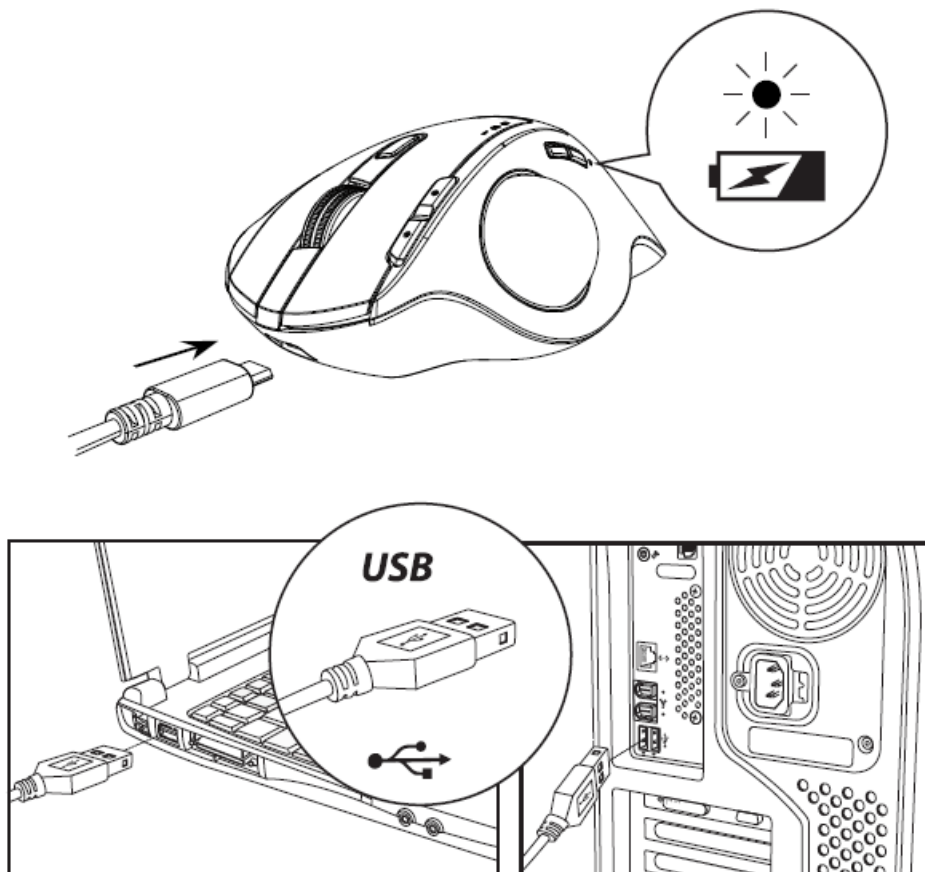
3



1. Turn on the power switch to ON.
2. Press the channel switch button to 2 or 3 Bluetooth channels and the white light flash slowly. Press and hold the channel switch button for 3~5 seconds until the white light flashes quickly, and the mouse enters the Bluetooth pairing mode.
3. Turn on the Bluetooth settings on your device, search or select “EM01 NL” and start Bluetooth pairing until the connection is completed.

Charging Guide

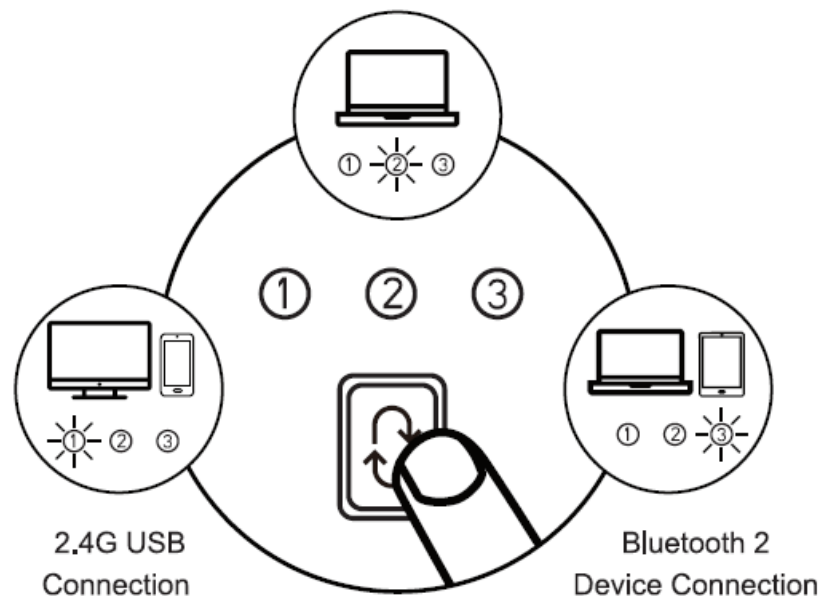
1. When the battery is low, the charging indicator light will flash red until it turns off.
2. Insert the Type-C charging cable into the mouse, and the red light will remain on while charging.
3. The charging time is about 1-3.5 hours and the indicator light turns off when fully charged.



Switch Connection Channel

After BT1, BT2 and 2.4G USB channels is connected, press the channel switch button on the top of the mouse to switch between multiple devices.

Bluetooth 1 Device Connection



Press the channel switch button on the top of the mouse to switch between 3 devices.

Data Parameters


- **Basic parameter:**
 - **Movement Detection Technology:** Optical
 - **Lithium battery Capacity:** 900mAh
 - **DPI:** 200-[400-800-1200](#)-1600
 - **Click life:** 3 million+
 - **Dimension:** 4.92*2.5*1.55in
 - **Weight:** 6.74oz (191g)
- **Bluetooth transmission parameters:**
 - **Transmission distance:** 10m
 - **Working Voltage:** 3.7V
 - **Working current:** 4mA
 - **Reaction rate:** 125Hz
- **System requirement:**
 - Bluetooth-enable device
 - Windows 8, Windows 10 or higher version
 - Mac OS x 10.10 or higher version
 - Android 4.3 or higher version
 - **IOS system:** IOS 9.2 and above
- **2.4G transmission parameters:**
 - **Transmission distance:** 10m
 - **Working Voltage:** 3.7V

- **Working current:** 5.5mA
- **Reaction rate:** 250Hz
- **System requirement:**
 - An available USB port
 - Windows XP, Windows 7, Windows 8, Windows 10 or higher version
 - Mac OS x 10.10 or higher version

Packing List

- 1 x Wireless Mouse
- 1 x USB Receiver
- 1 x Type C Charging Cable
- 1 x User Manual

Documents / Resources

	ProtoArc EM01 NL Bluetooth Wireless Rechargeable Trackball Mouse [pdf] User Manual EM01 NL Bluetooth Wireless Rechargeable Trackball Mouse, EM01 NL, Bluetooth Wireless Rechargeable Trackball Mouse, Wireless Rechargeable Trackball Mouse, Rechargeable Trackball Mouse, Trackball Mouse, Mouse
---	--

References

- [User Manual](#)

[Manuals+.](#) [Privacy Policy](#)

This website is an independent publication and is neither affiliated with nor endorsed by any of the trademark owners. The "Bluetooth®" word mark and logos are registered trademarks owned by Bluetooth SIG, Inc. The "Wi-Fi®" word mark and logos are registered trademarks owned by the Wi-Fi Alliance. Any use of these marks on this website does not imply any affiliation with or endorsement.