



ProtoArc EKM01 Ergonomic Wireless Keyboard Mouse User Manual

[Home](#) » [ProtoArc](#) » ProtoArc EKM01 Ergonomic Wireless Keyboard Mouse User Manual 

ProtoArc

EKM01
User Manual
Ergonomic Dual Mode Rechargeable
Wireless Keyboard Mouse Combo

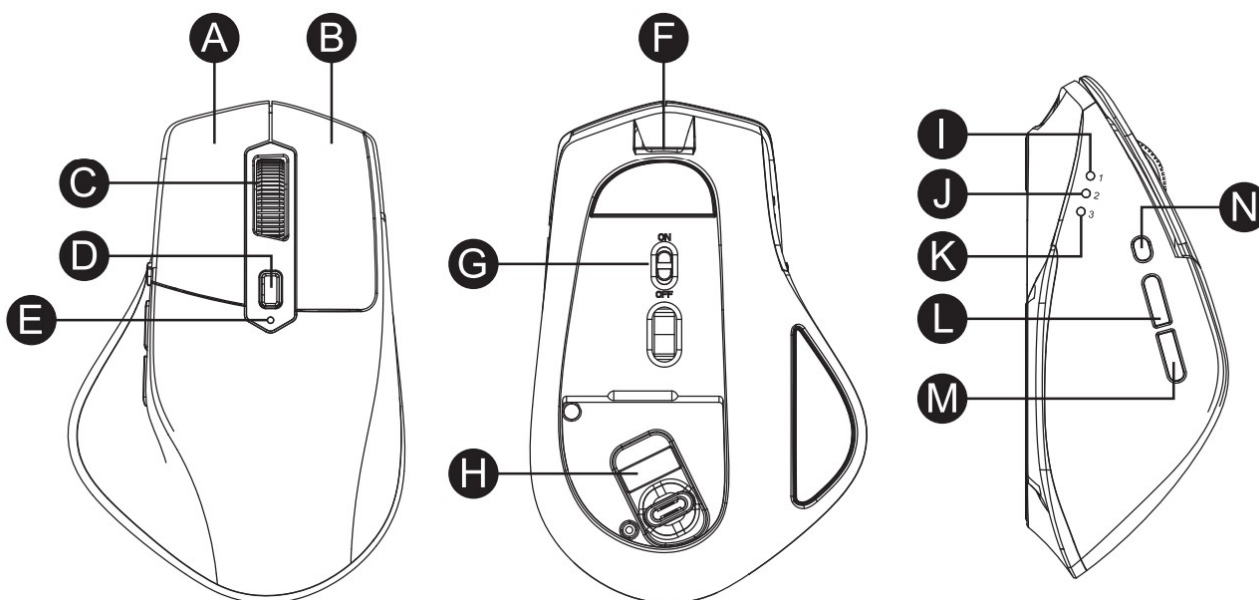


support@protoarc.com
www.protoarc.com

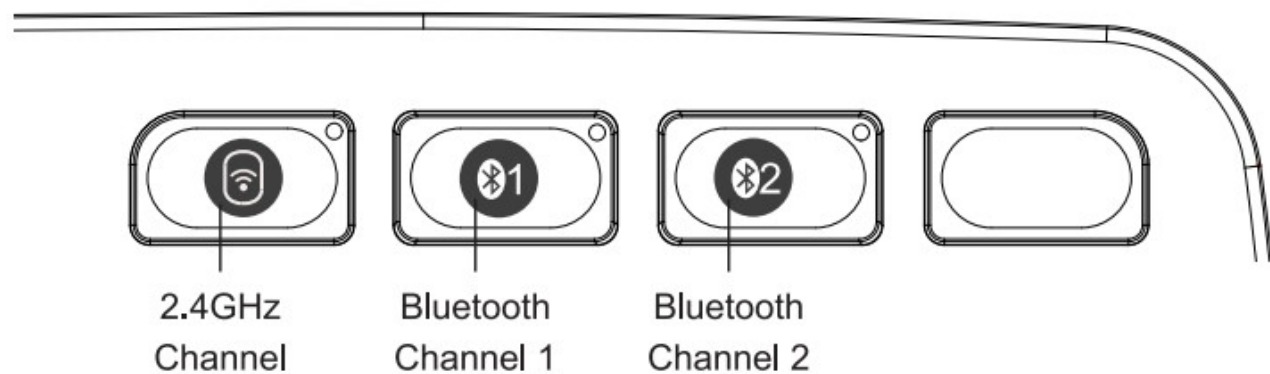
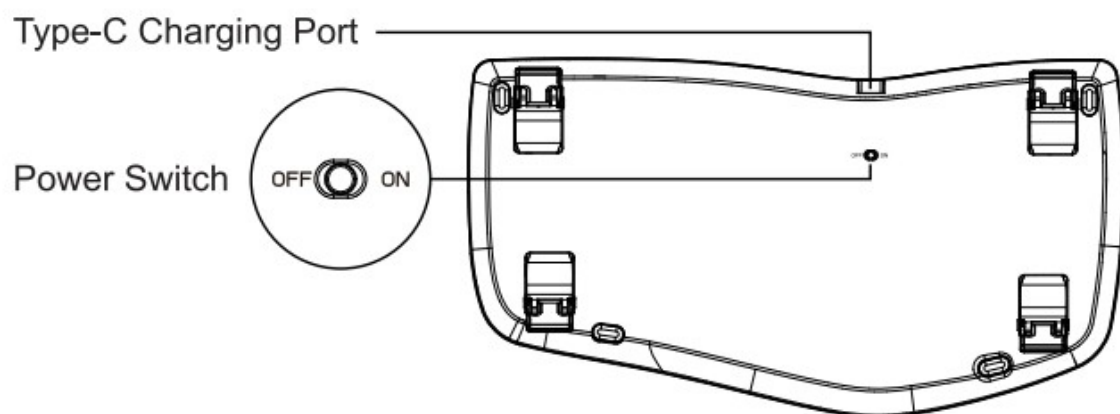
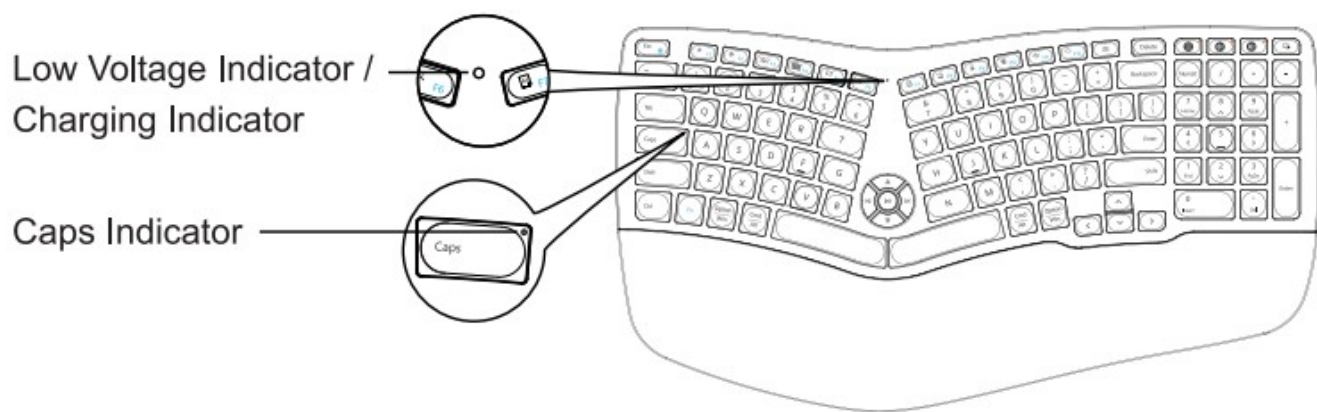
Contents

- [1 Product Function](#)
- [2 2.4G HZ Connection Steos](#)
- [3 Mouse Bluetooth Connection Steps](#)
- [4 Keyboard Bluetooth Connection Steps](#)
- [5 How to Switch the Mouse Mode](#)
- [6 Mouse Charging](#)
- [7 Multimedia Function Button](#)
- [8 Product Parameters](#)
- [9 Kind Note](#)
- [10 Sleep Mode](#)
- [11 Package List](#)
- [12 Documents / Resources](#)
 - [12.1 References](#)
- [13 Related Posts](#)

Product Function

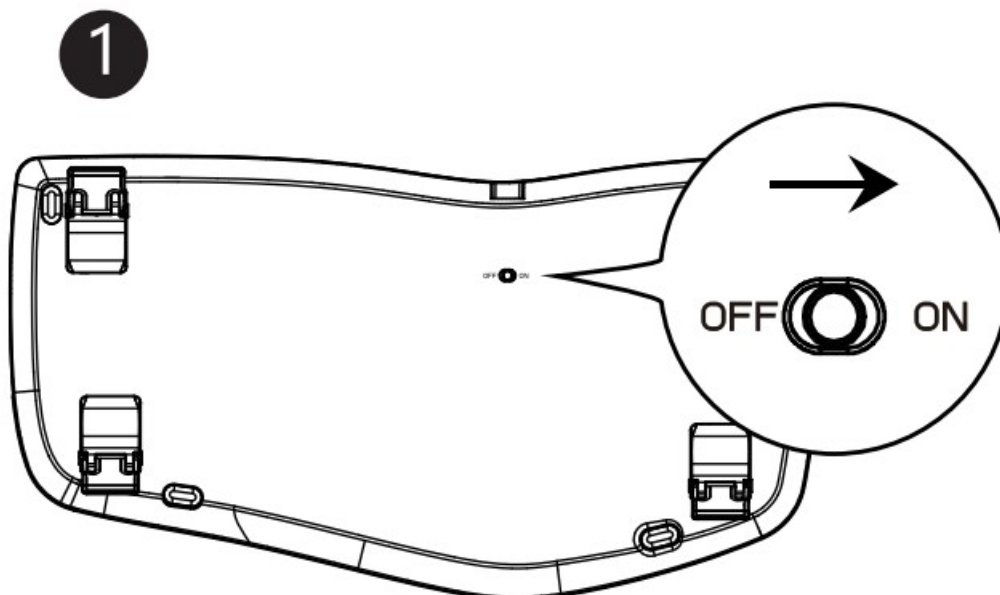


A LeftButton	H USB Receiver
B Right Button	I 2.4G Indicator
C scroll Wheel Button	J BT1 Indicator
D DPI Button	K B2 Indicator
E Low Voltage Indicator / Charging Indicator	L Forward Bution
F Type-C Charging Port	M Backward Button
G Power Switch	N Mode Switch Button

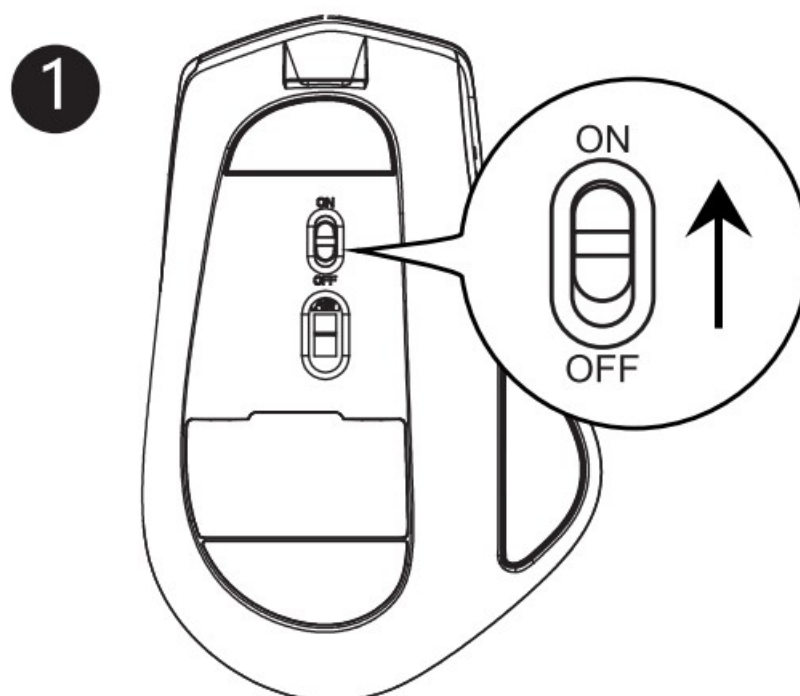


2.4G HZ Connection Steos

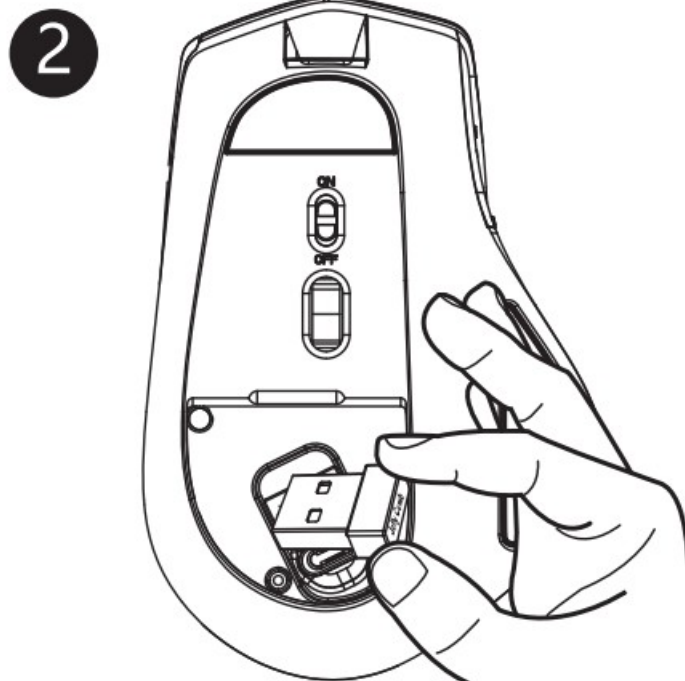
1. Switch the power switch to ON,



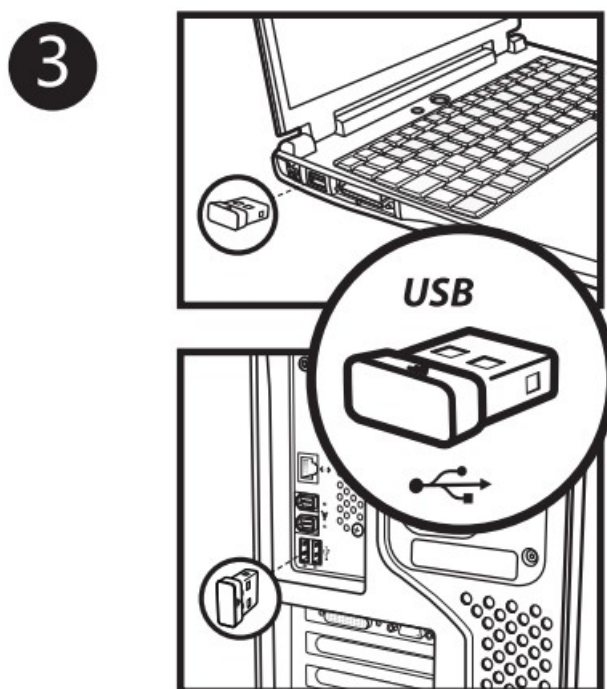
1. Switch the power switch to ON,



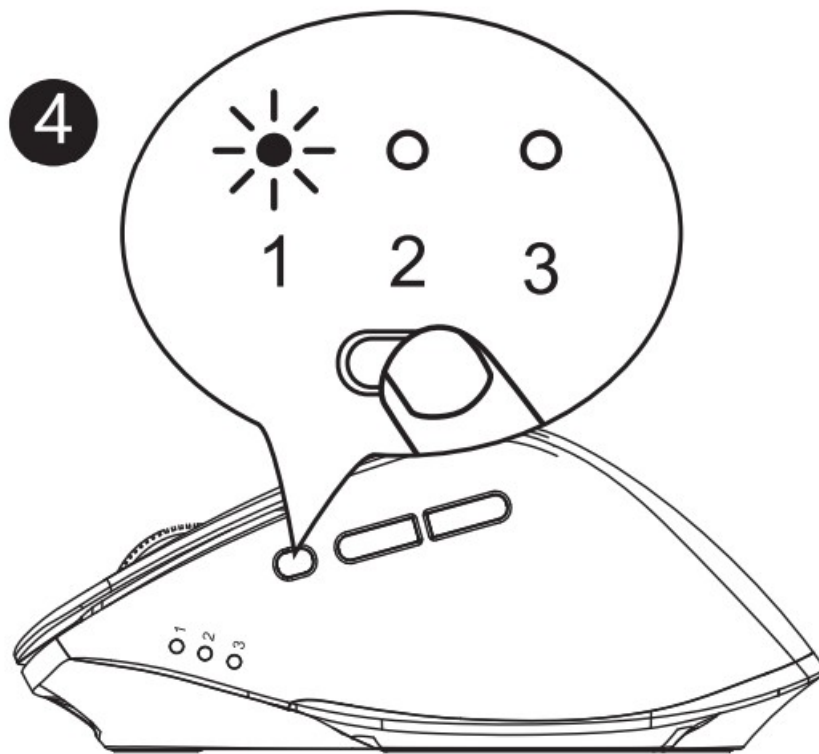
2. Take out the USB receiver.




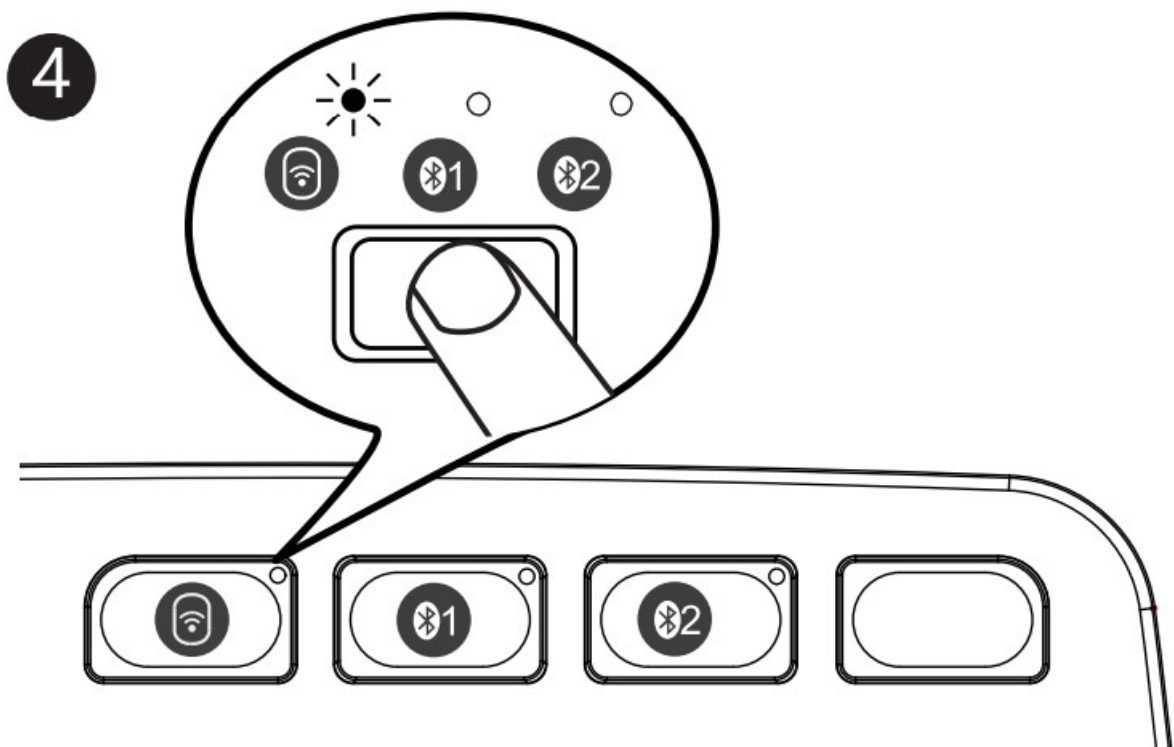
3. Plug the USB receiver into the USB port of the computer.



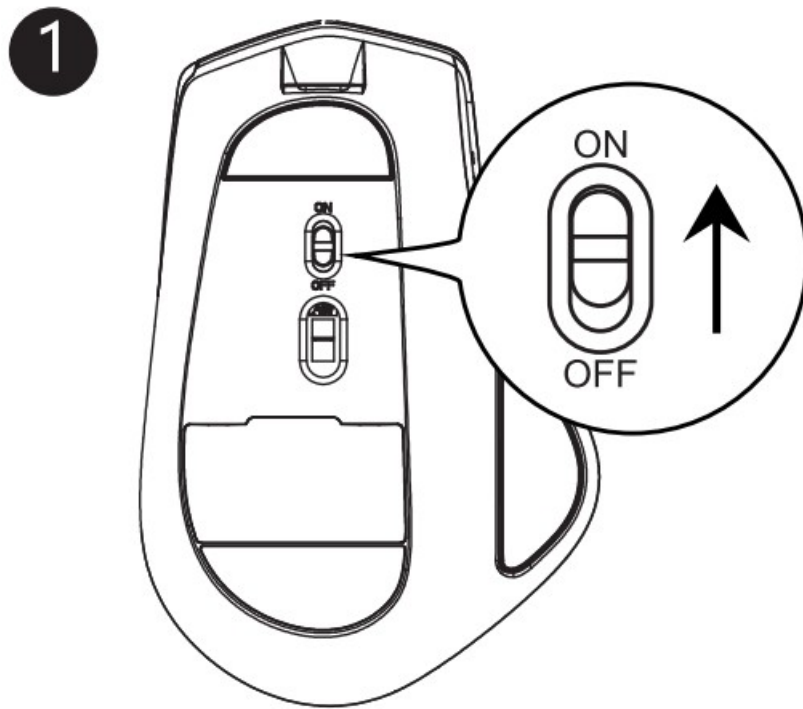
4. Press the mode switch button on the left side of the mouse until the USB indicator is on, the mouse enters 2.4G mode.



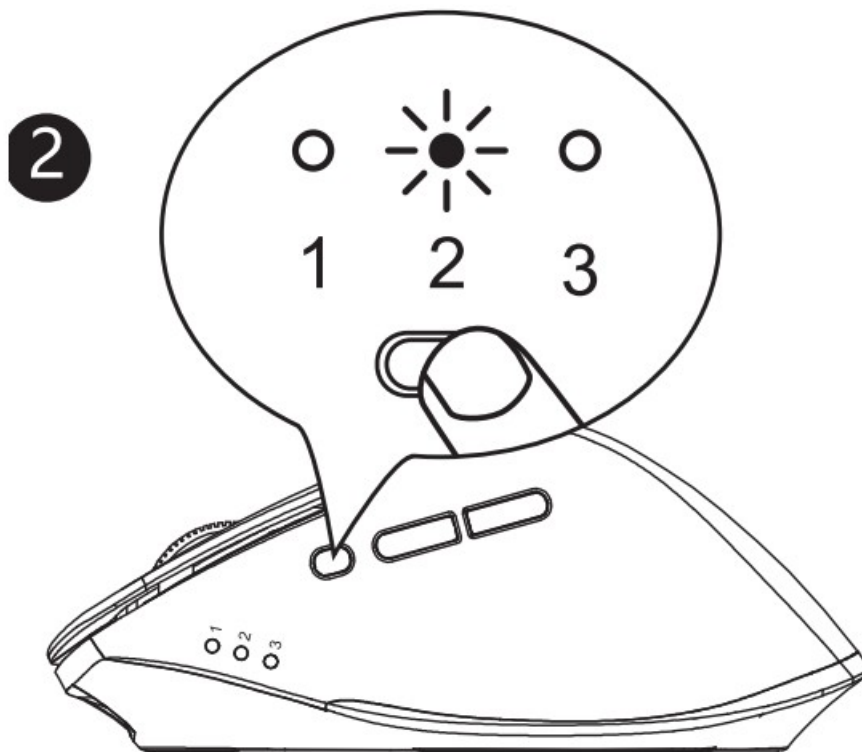
4. Press the key  , switch to 2.4G channel, the white indicator flashes slowly, the keyboard enters 2.4G mode.



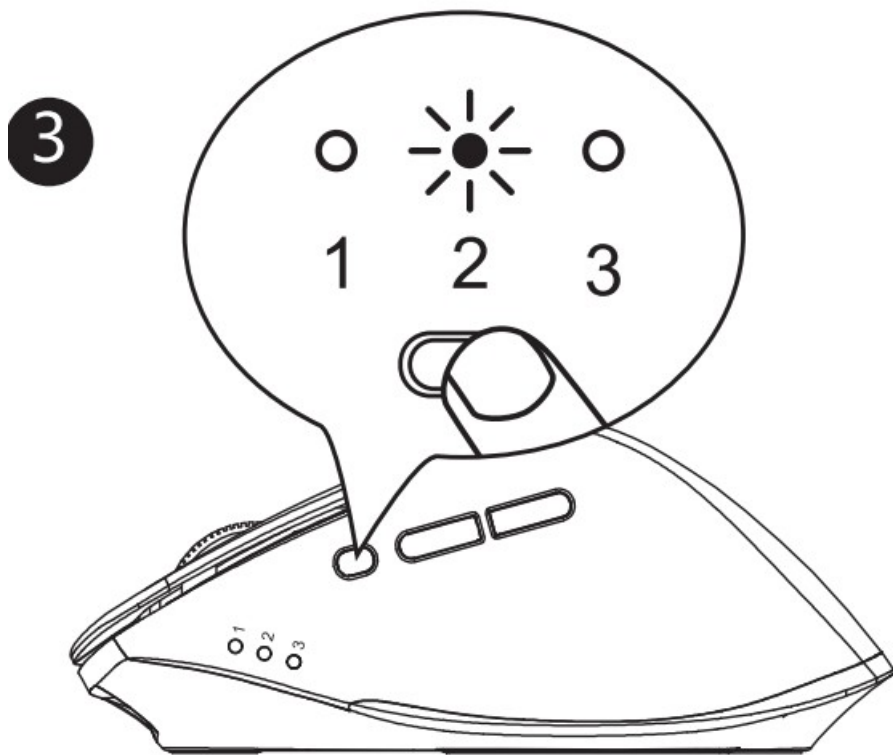
Mouse Bluetooth Connection Steps



1. Switch the power switch to ON.



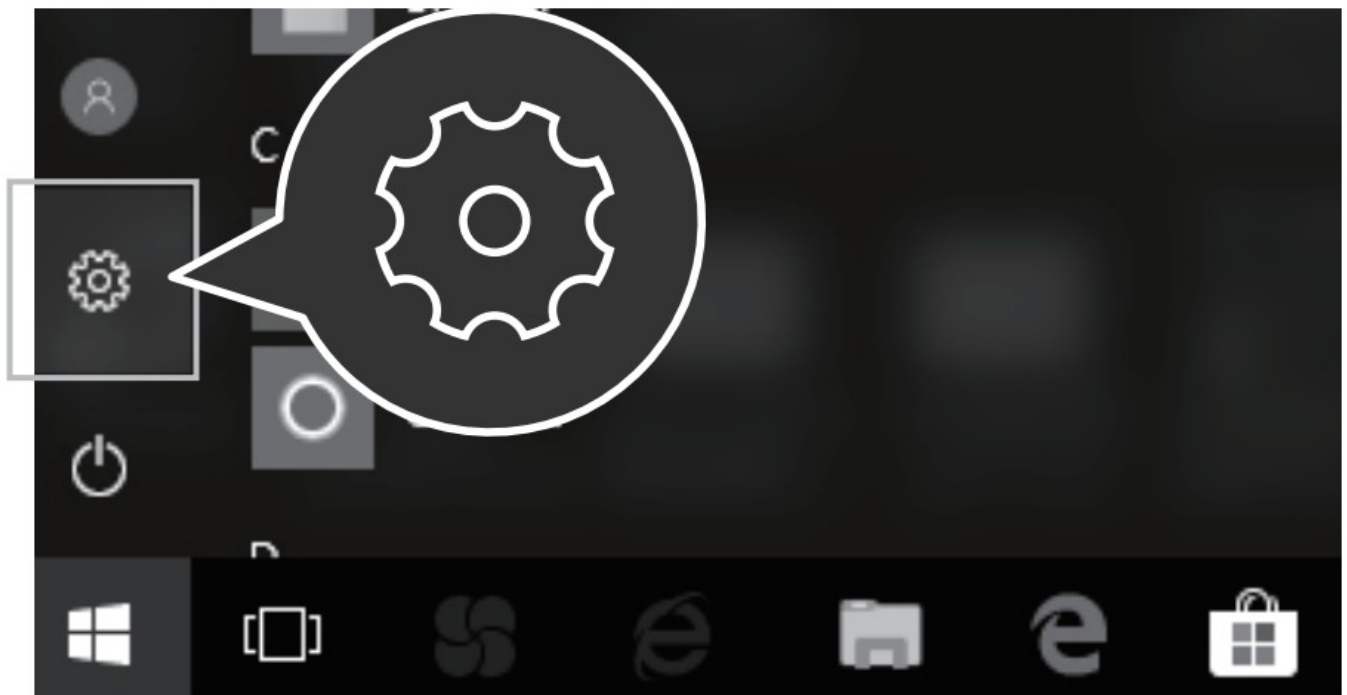
2. Press the mode switch button on the left side of the mouse until the 2/ 3 indicator is on, the mouse enters Bluetooth mode.



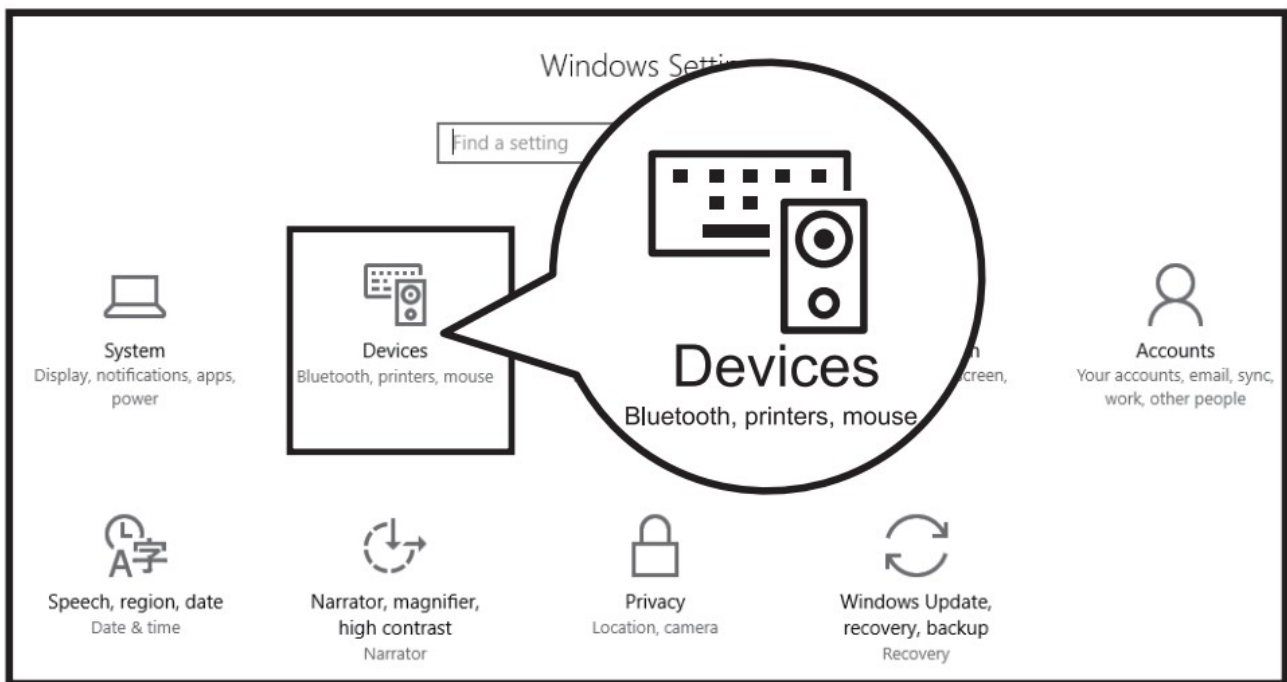
3. Long press the mode switch button on the left side of the mouse for 3~5 seconds until the 2 / 3 indicator flashes quickly, then the mouse enters Bluetooth pairing mode.

Windows 10 System (Mouse)

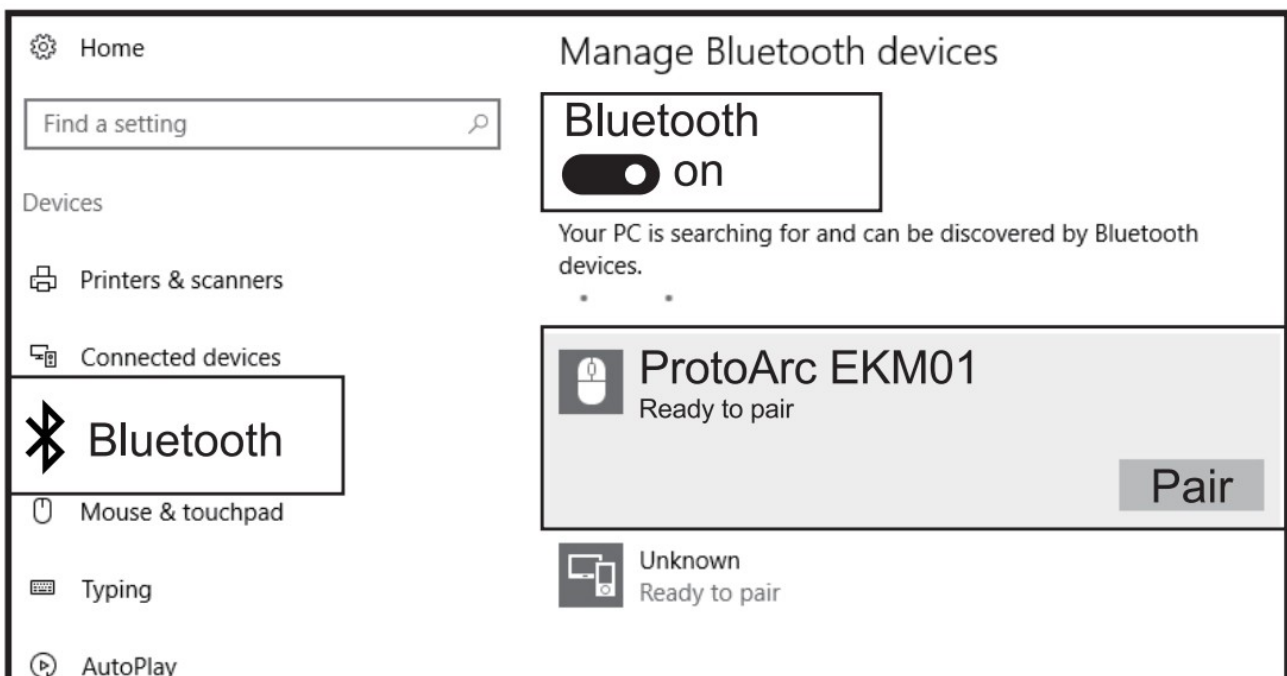
4. Open the "Setting" and find "Bluetooth Device™" on the computer.



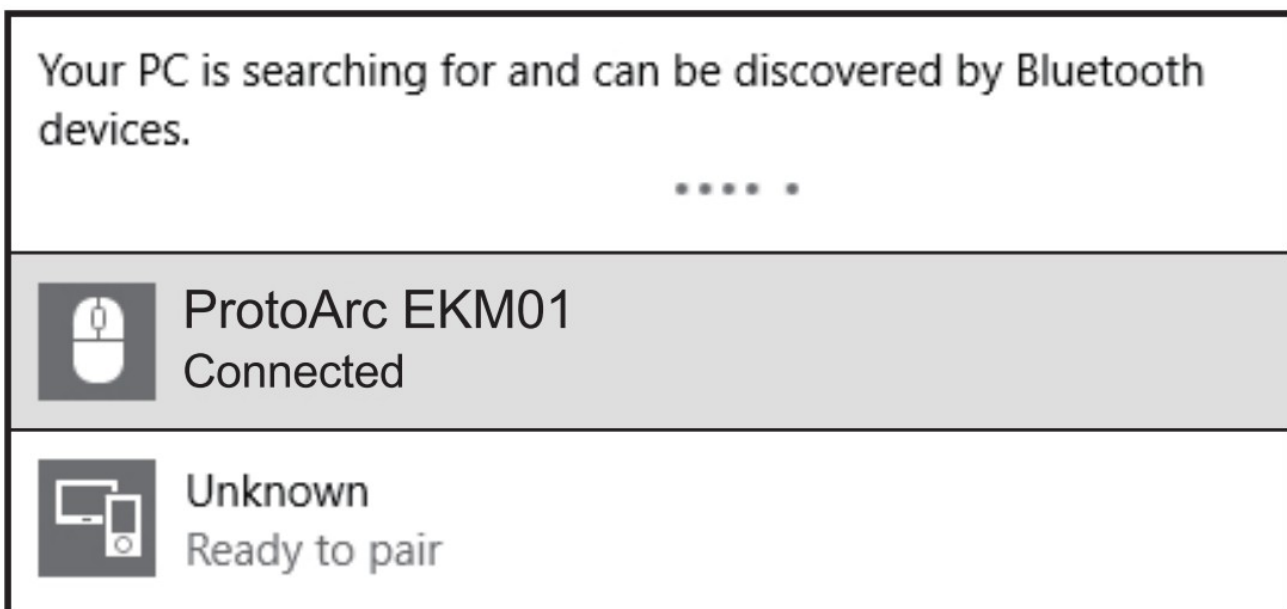
5. Choose "Add / delete Bluetooth Devices"



6. Bluetooth search and click to pair the "ProtoArc EKM01"



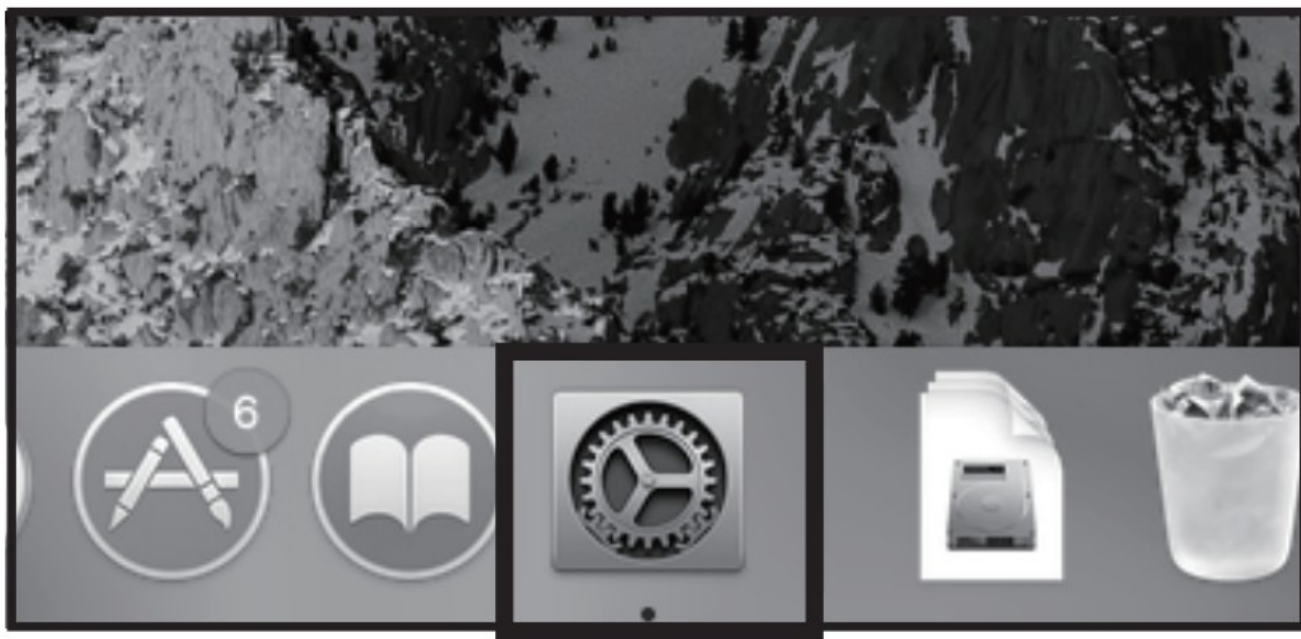
7. Successfully paired when it shows "ProtoArc EKM01 Connected".



Mac OS System (Mouse)

Complete Mouse Bluetooth Mode Installation Steps 1, 2 and 3 before pairing.

4. Find "System Preferences" on Mac.



5. Turn on Bluetooth in System Preferences.



6. Your computer will automatically search for "ProtoArc EKM01" and then click *pair*.

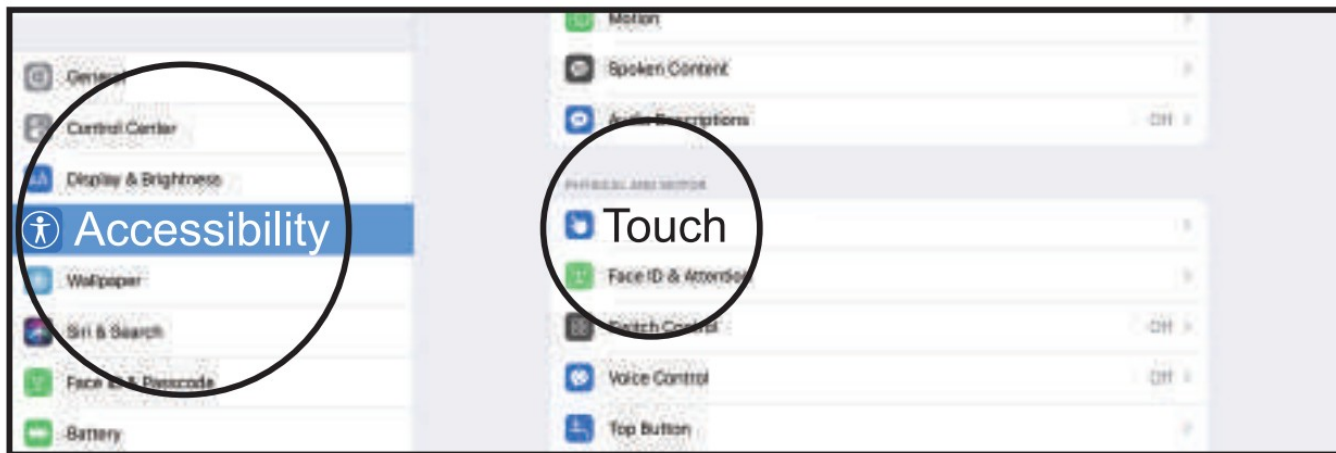


iOS System (Mouse)

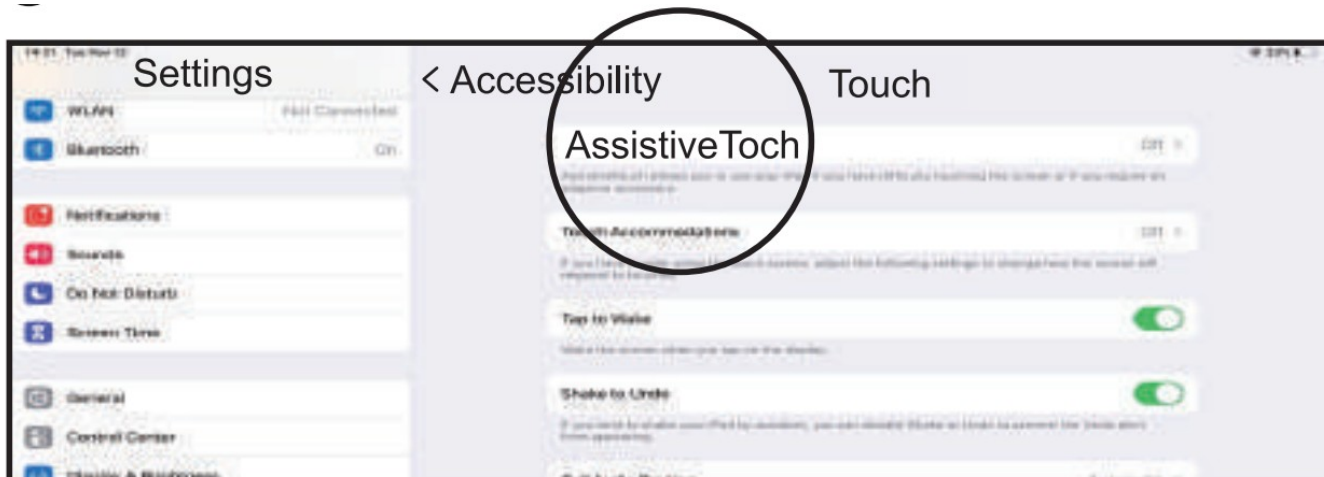
Only iPad OS 13/iOS 13 and above systems support mouse function.

Complete Mouse Bluetooth Mode Installation Steps 1, 2 and 3 before pairing.

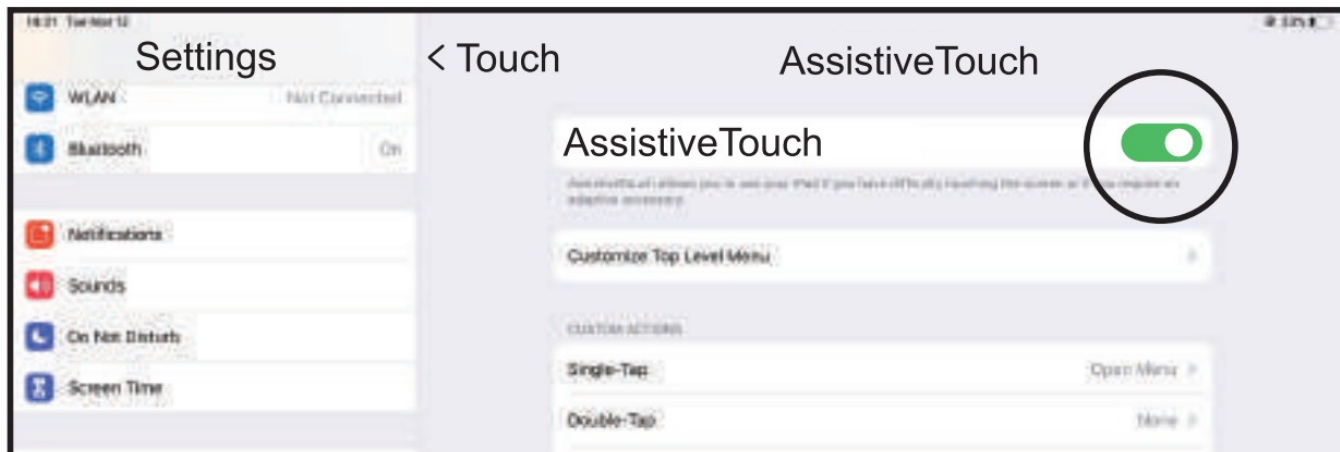
4. Open “Settings” and find “Accessibility”.



5. Click “Touch”.



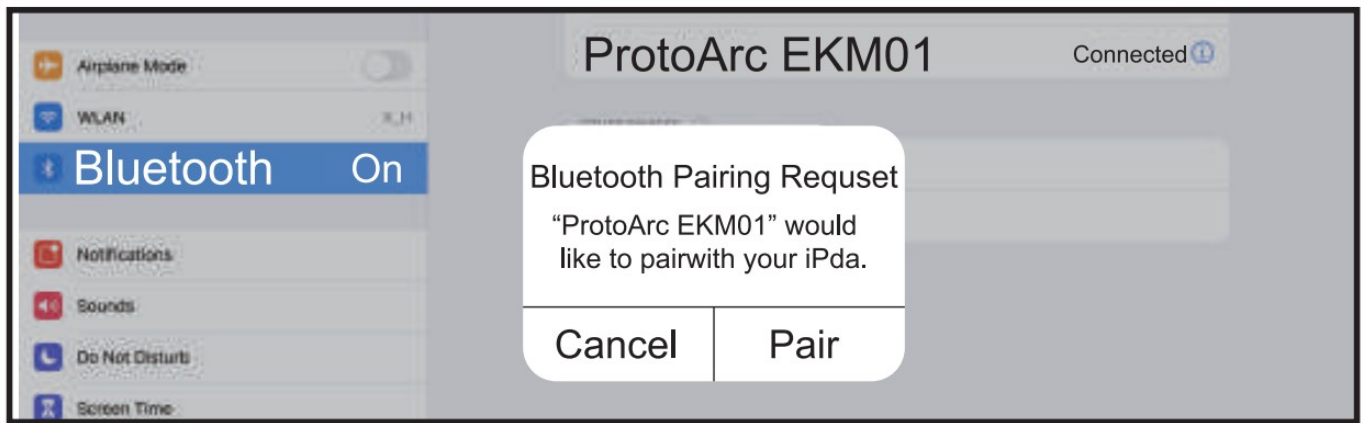
6. Turn on “Assistive Touch”.



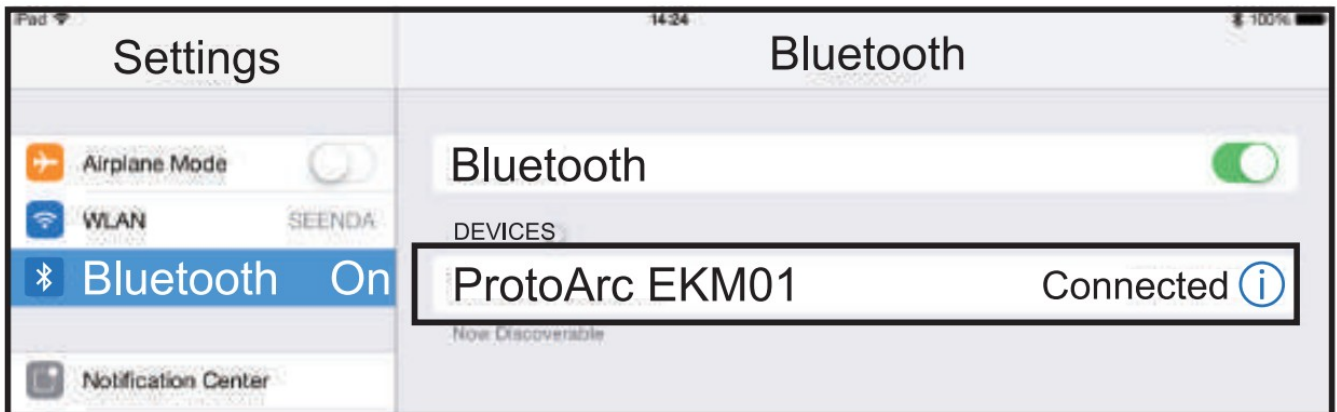
7. Open “Settings” and turn on Bluetooth function



8. Bluetooth search and click to pair the “ProtoArc EKMO1”.



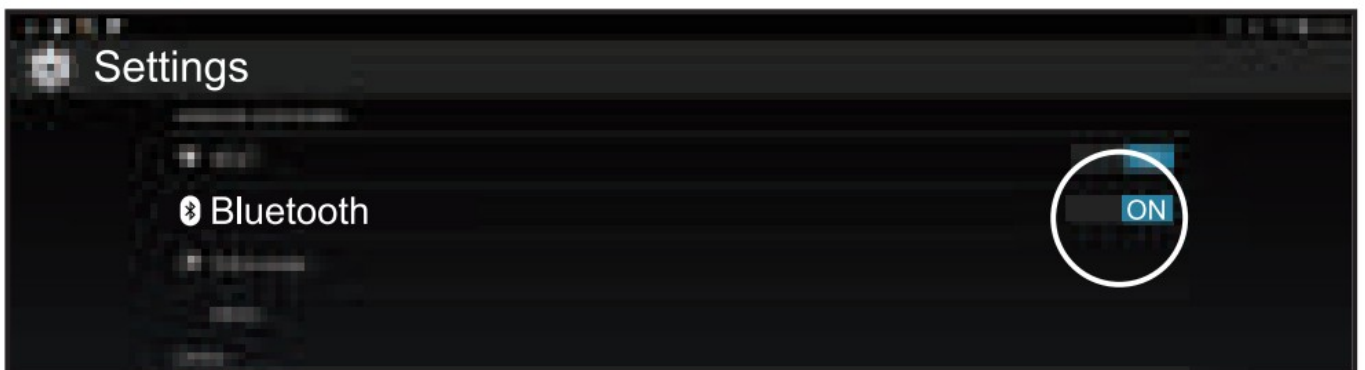
9 . Successfully paired when it shows "ProtoArc EKM01 Connected."



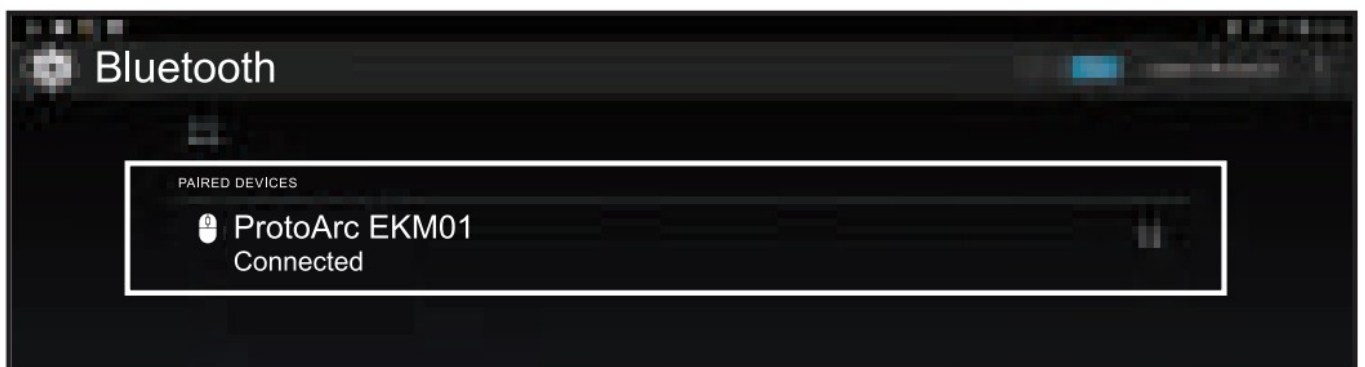
Android System (Mouse)

Complete Mouse Bluetooth Mode Installation Steps 1, 2 and 3 before pairing

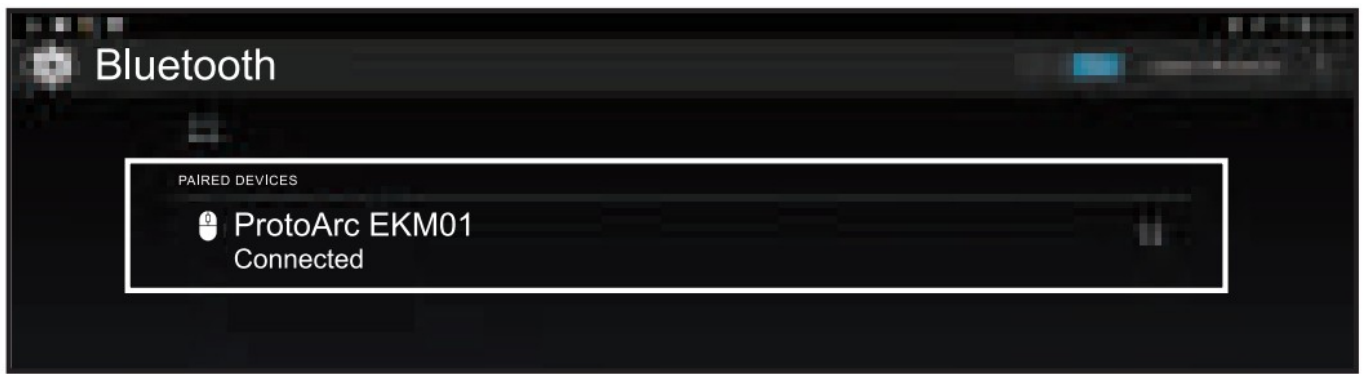
4. Open "Settings™" and turn on Bluetooth function.



5. Bluetooth search and click to pair the "ProtoArc EKM01".

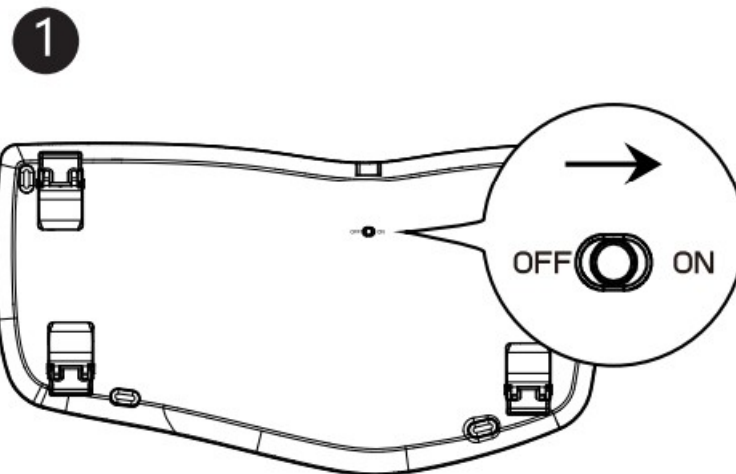




6. Successfully paired when it shows "ProtoArc EKM01 Connected".

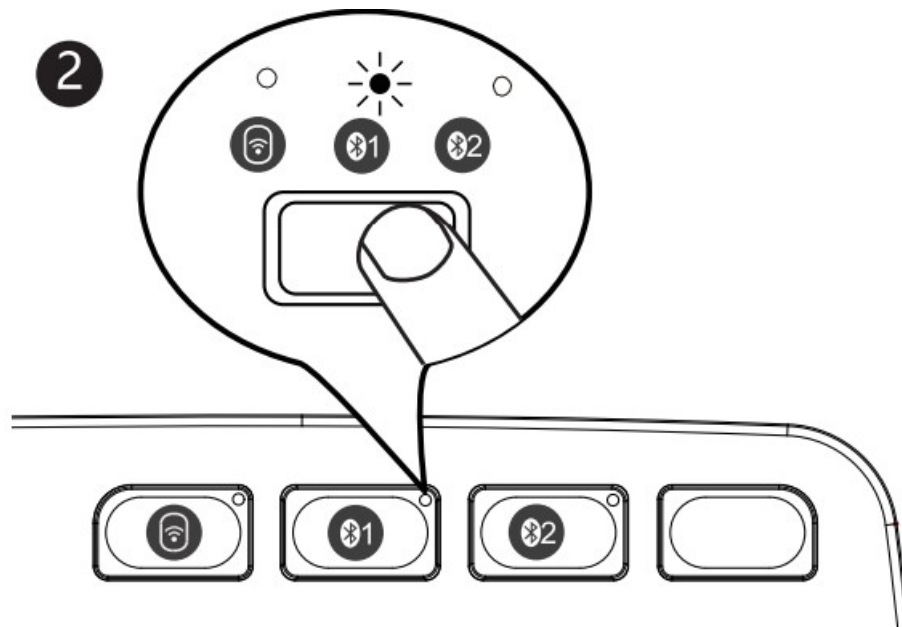


Keyboard Bluetooth Connection Steps

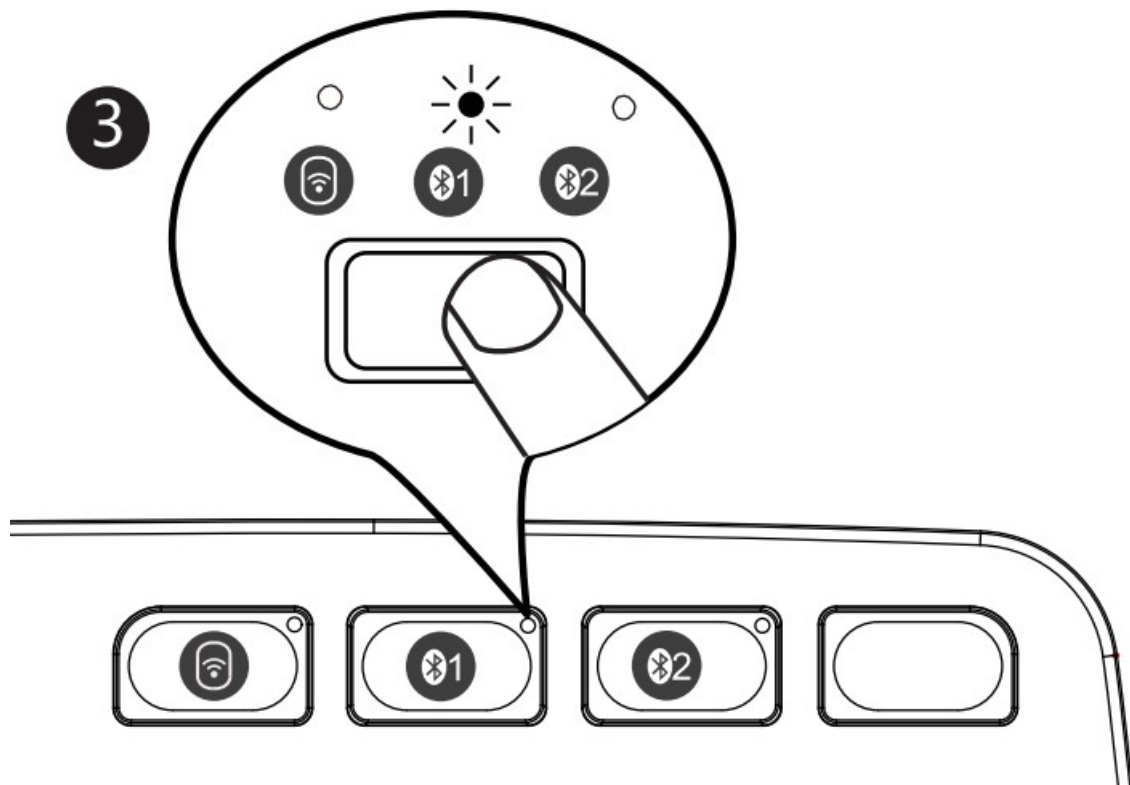
1. Switch the power switch to ON.



2. Press the channel key to choose bluetooth channel  /  the white indicator flashes, the keyboard enters bluetooth mode.

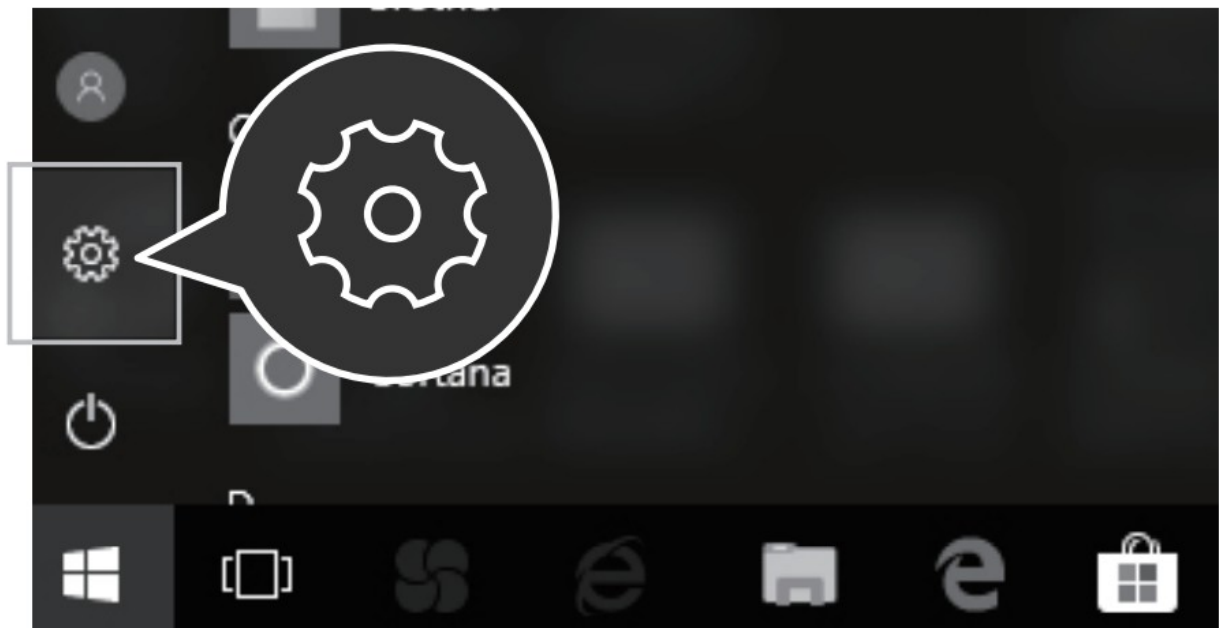


3. Long press the channel key for 3~5 seconds, the white indicator flashes quickly, the keyboard enters bluetooth pairing mode.

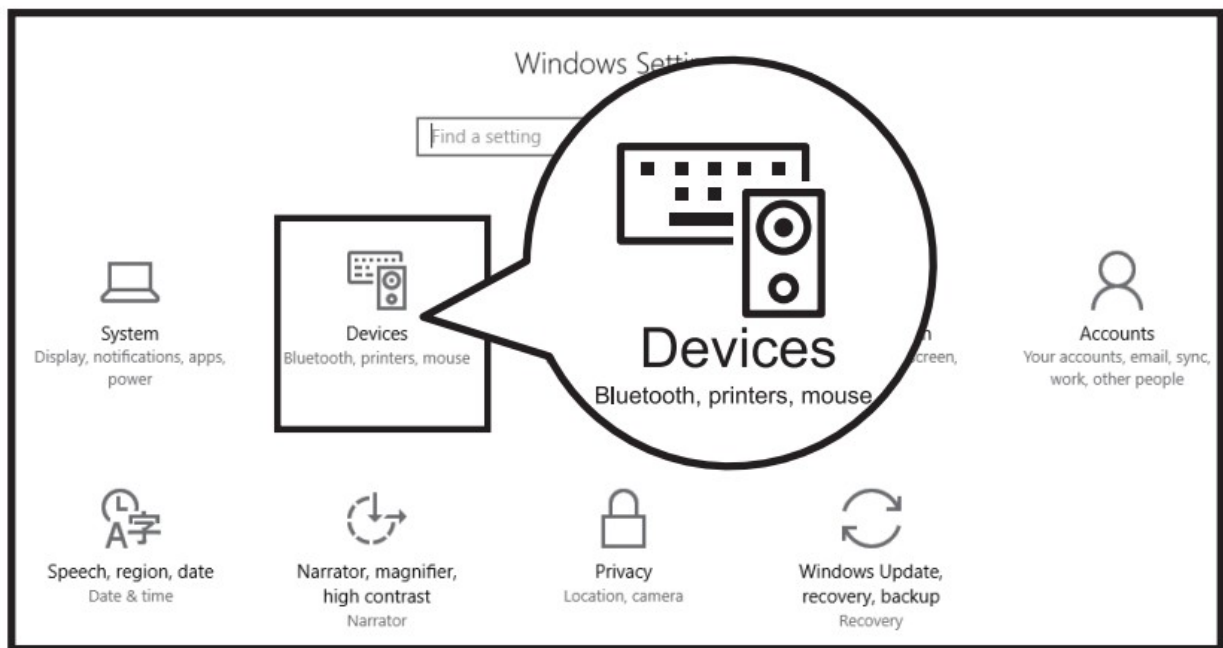


Windows 10 System (Keyboard)

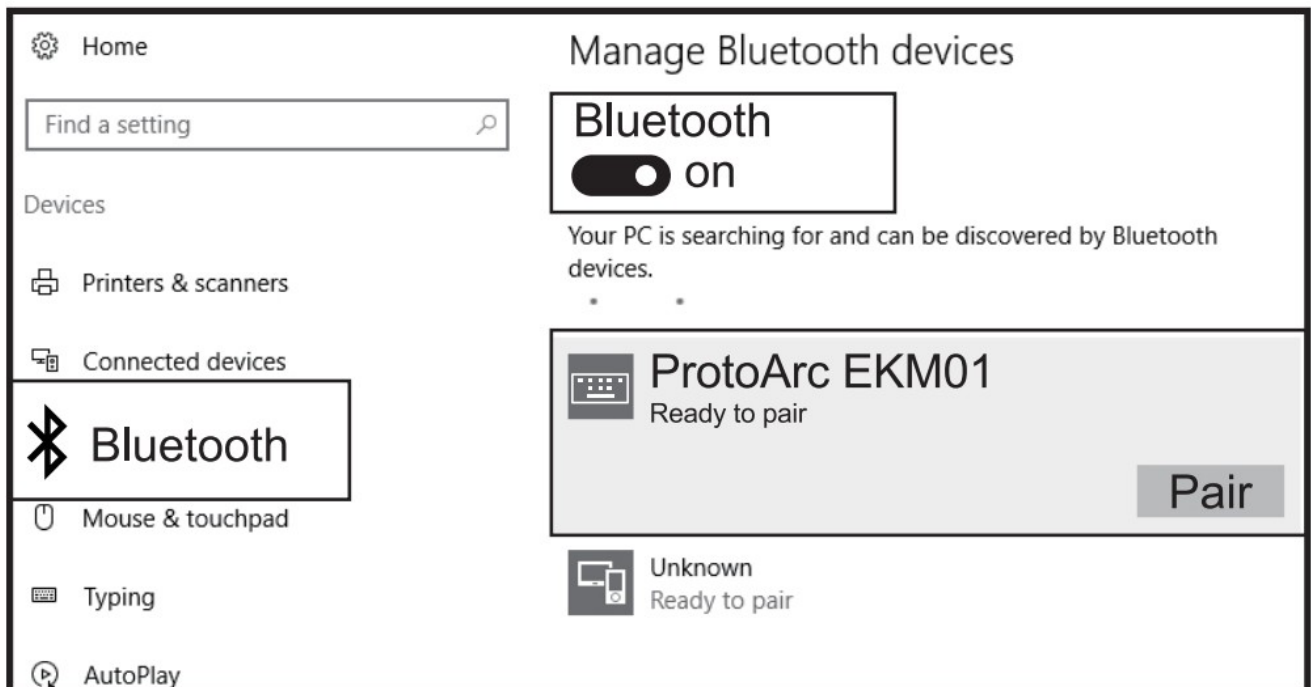
4 . Open “Settings” and Click Bluetooth Devices.



5. Choose “Add / Delete Bluetooth Devices”.



6. Bluetooth search and click to pair the *ProtoArc EKM01"



7. Successfully paired when it shows "ProtoArc EKM01 Connected".

Your PC is searching for and can be discovered by Bluetooth devices.

.....



ProtoArc EKM01
Connected



Unknown
Ready to pair

Mac OS System (Keyboard)

Complete Keyboard Bluetooth Mode Installation Steps 1, 2 and 3 before pairing.

4. Find "System Preferences" on Mac.



5. Turn on Bluetooth in System Preferences.



6. Bluetooth search and click to pair the “ProtoArc EKM01”



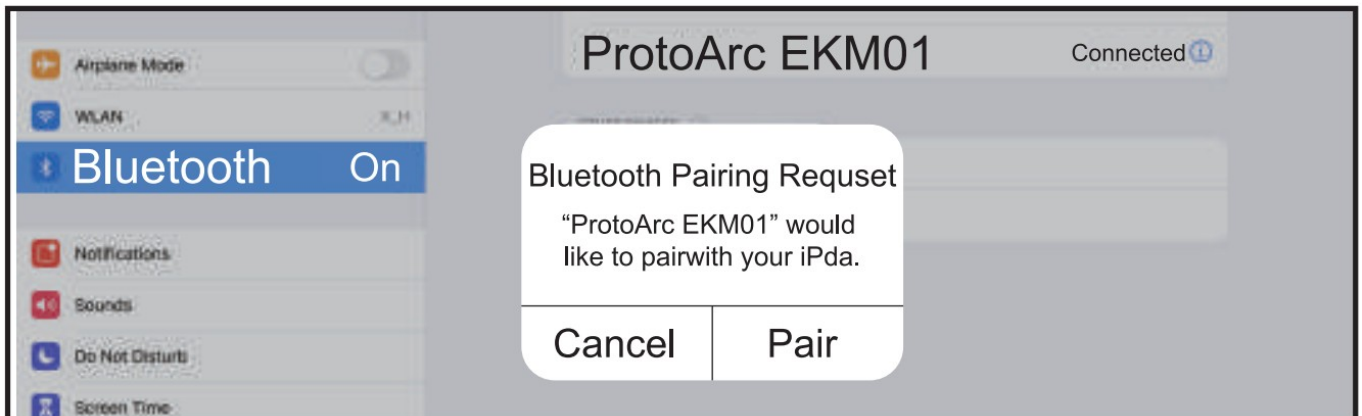
iOS System (Keyboard)

Complete Keyboard Bluetooth Mode Installation Steps 1, 2 and 3 before pairing.

4. Open “Settings” and turn on Bluetooth.



5. Bluetooth search and click to pair the “ProtoArc EKM01”.



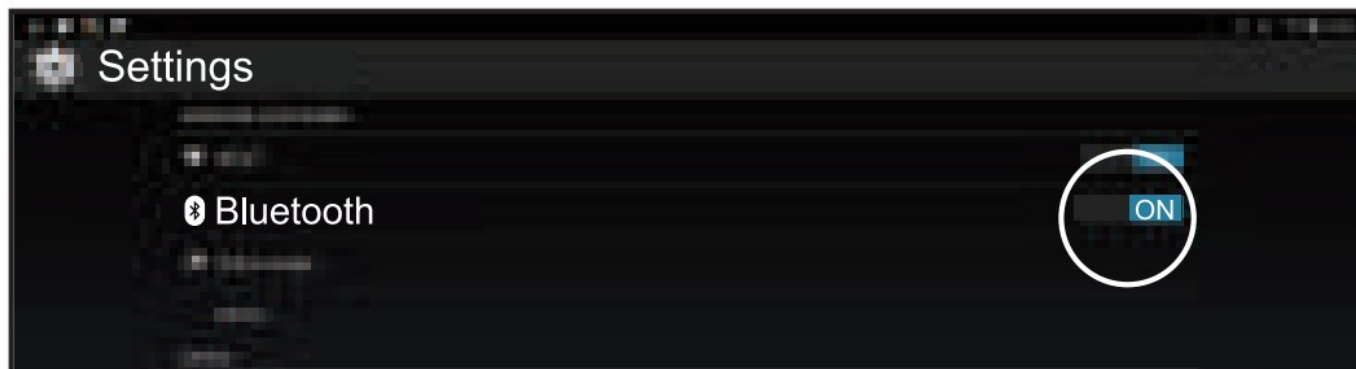
6. successfully paired when it shows “ProtoArc EKM01 Connected”.



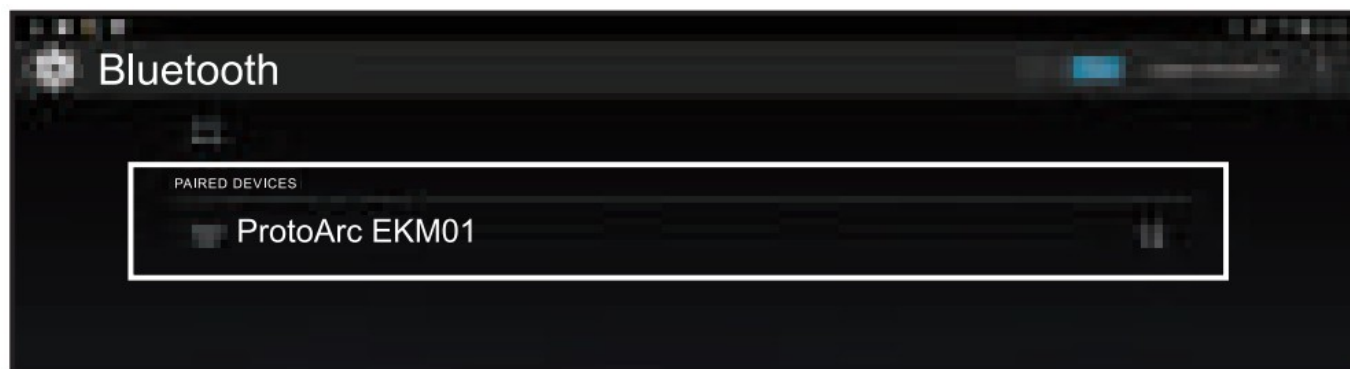
Android System (Keyboard)

Complete Keyboard Bluetooth Mode Installation Steps 1, 2 and 3 before pairing.

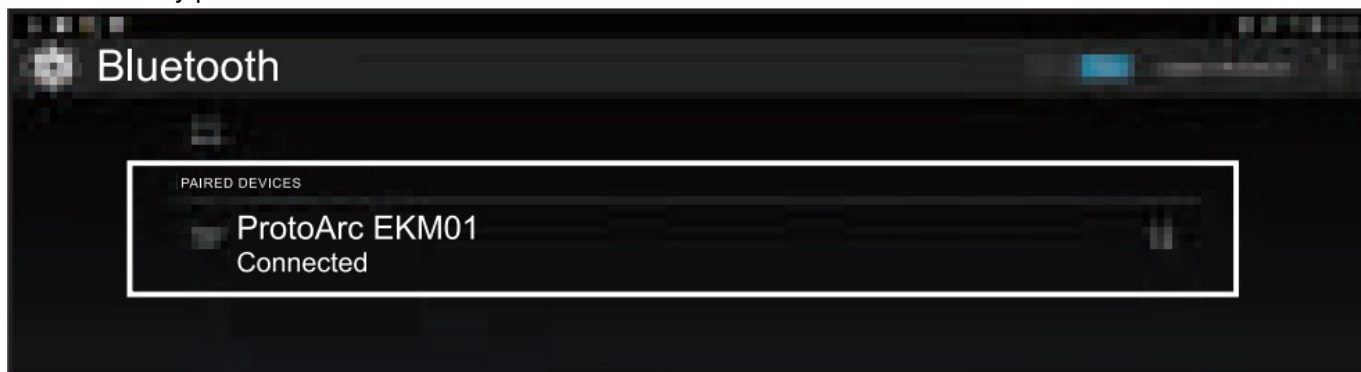
4. Open “Settings” and turn on Bluetooth.



5. Bluetooth search and click to pair the “ProtoArc EKM01”.



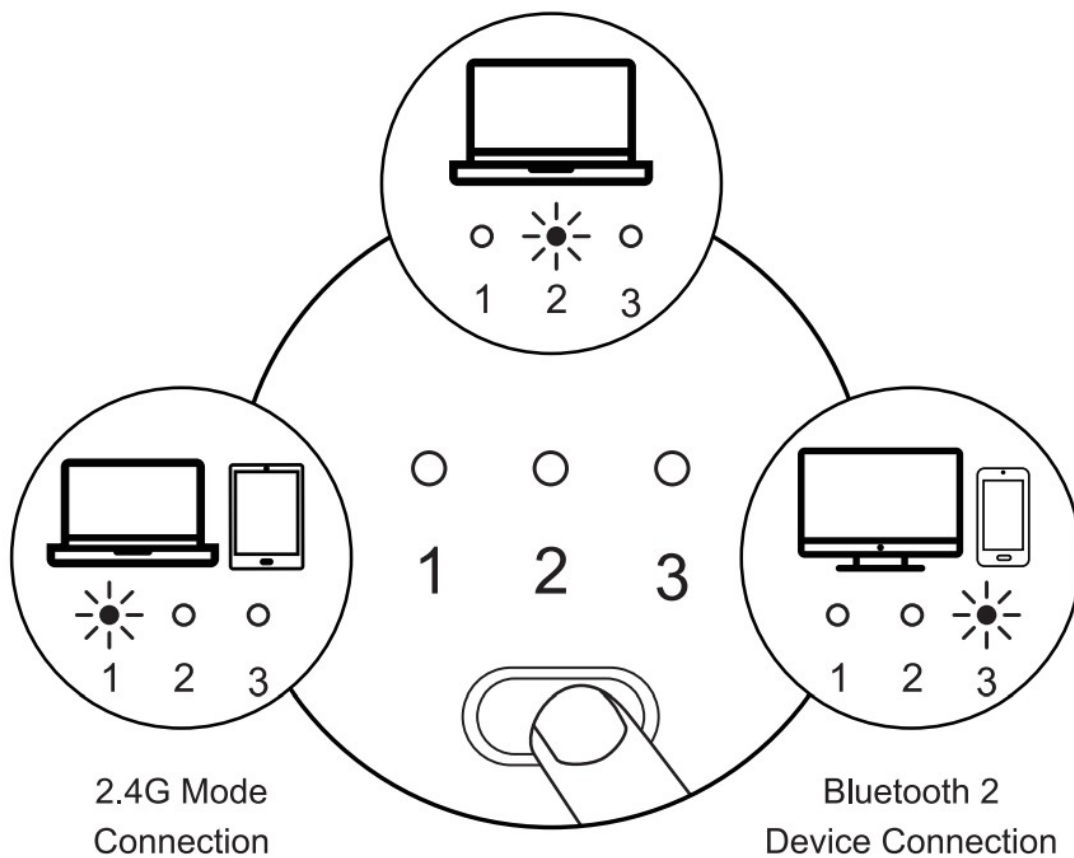
6. Successfully paired when it shows “ProtoArc EKM01 Connected”.



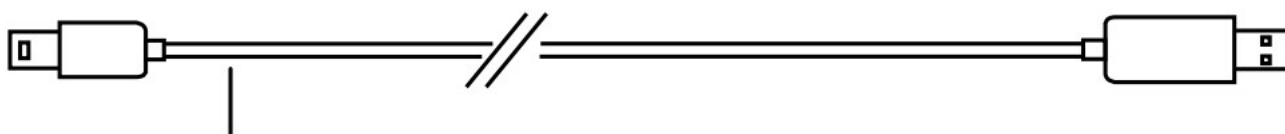
How to Switch the Mouse Mode

After USB / Bluetooth 1/ Bluetooth 2 devices connected, short press the mode switch button on the left side of the mouse to easily switch between devices.

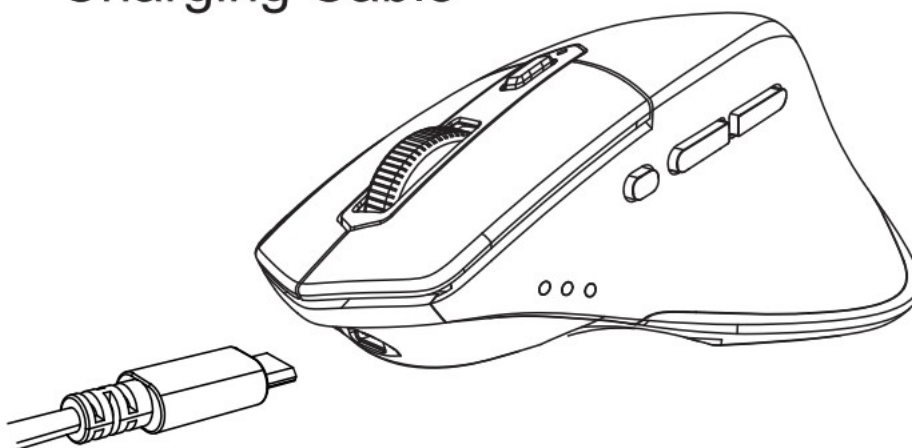
Bluetooth 1 Device Connection






Mouse Charging



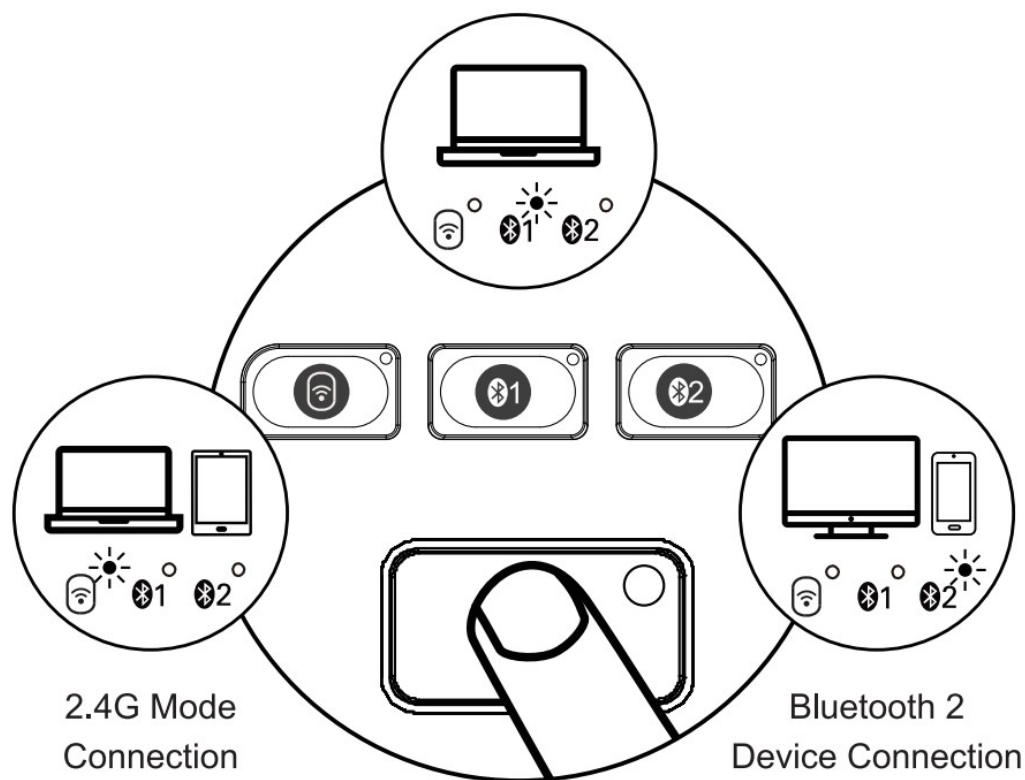
Charging Cable



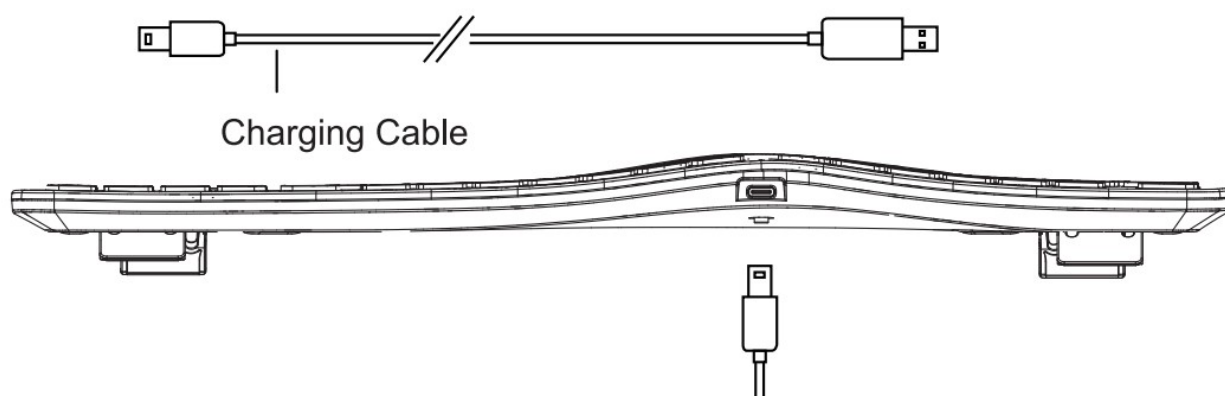
How to Switch the Keybo: Mode

After  |  |  connected, short press the keyboard channel key to easily switch between devices

Bluetooth 1 Device Connection




Keyboard Charging



When the battery is too low, the low voltage indicator of the keyboard mouse will flash until the keyboard mouse turns off, please recharge the keyboard mouse in time to make sure the keyboard mouse can work properly. When the battery of the keyboard is too low, delay or slow response will happen while typing.

Multimedia Function Button

Buttons	Win system	Android system	iOS system	MAC OS system
	Decrease brightness	Decrease brightness	Decrease brightness	Decrease brightness
	Increase brightness	Increase brightness	Increase brightness	Increase brightness
	Window switching	Window switching	/	Multi-window preview
	Multi-window preview	/	App switching	App switching

	Show desktop	/	/	Show desktop
	Search	Search	Search	Search
	Select all	Select all	Select all	Select all
	Copy	Copy	Copy	Copy
	Cut	Cut	Cut	Cut
	Paste	Paste	Paste	Paste
	Mute	Mute	Mute	Mute
	Home	Home	Home	/
	Screenshot	Screenshot	Screenshot	Screenshot
	Lock	/	Lock	Lock
	Volume up	Volume up	Volume up	Volume up
	Volume down	Volume down	Volume down	Volume down
	Previous	Previous	Previous	Previous
	Play&Stop	Play&Stop	Play&Stop	Play&Stop
	Next	Next	Next	Next
	FN+ESC (FN lock) button to turn on or turn off the FN function			

Please NOTE: The FN function is a cyclic mode (F1-F12 and multimedia functions are cyclically used)

Product Parameters

Keyboard

Compatible Operating Systems	2.4G compatible systems: Windows OS Bluetooth compatible systems: Windows 8, Windows 10 or above, Mac OS X 10.12 or above, Android 4.3 or above.
Battery Capacity	300mAh
Sleep Time	Enter into the sleep mode after no operation of 30 minutes
Battery Life	1000 times charge and discharge
Key Life	3 Millions Strokes
Standby Time	200 Hours.
'Wake Up Way	Press any key
Operating Distance	Within 8 meters
Working Current	<3mA
Keyboard Dimension	423.8 x 2314 x 27.7mm

Mouse

Compatible Operating Systems	2.4G compatible systems: Windows OS Bluetooth compatible systems: Windows 8, Windows 10 or above, Mac OS X 10.12 or above, Android 4.3 or above:
Working Voltage	37V
Working Current	<35mA
DPI	800-1300-2000
Sleep Time	30 mins
Working Time	140 hours
Charging Time	2-3 hours.
Battery Capacity	500mAh
Wake Up Way	Press any button
Operating Distance	Within 8 meters
Standby Time	100 Days
Mouse Dimension	124.6 x 83.6 x 50.4mm

Kind Note

1. When the keyboard mouse is not connected properly, please turn off the power switch, restart the Bluetooth of the device and connect again, or delete extra Bluetooth device names in the Bluetooth list, and connect again
2. Please press the channel button to switch between the devices that already connected successfully, wait for 3 seconds, it will work properly.
3. The keyboard mouse has memory function, when the keyboard mouse is connected properly at one channel, turn off the keyboard mouse and turn on again, the keyboard mouse will be in the default channel, and the

indicator of this channel is on.

Sleep Mode


1. When the keyboard mouse is not used for over 30 minutes, the keyboard mouse will automatically enter into the sleep mode, the indicator light will be off.
2. When you want to use the keyboard mouse again, please press any key, the keyboard mouse will wake up within 3 seconds, and the indicator light will be on again.

Package List

- 1 x Wireless Bluetooth Keyboard
- 1 x Wireless Bluetooth Mouse
- 1 x USB Receiver
- 1 x Type-C Charging Cable
- 1 x User Manual



Documents / Resources

<p>ProtoArc </p> <p>EXKM01</p> <p>User Manual</p> <p>Ergonomic Dual Mode Rechargeable Wireless Keyboard Mouse Combo</p> <p>support@protoarc.com www.protoarc.com</p>	<p>ProtoArc EKM01 Ergonomic Wireless Keyboard Mouse [pdf] User Manual</p> <p>EKM01 Ergonomic Wireless Keyboard Mouse, EKM01, Ergonomic Wireless Keyboard Mouse, Wireless Keyboard Mouse, Keyboard Mouse, Mouse</p>
---	---

References

- [User Manual](#)