

Contents [[hide](#)]

- [1 PROTECH QP6013 Temperature Humidity Data Logger](#)
- [2 Product Usage Instructions](#)
- [3 FEATURES](#)
- [4 DESCRIPTION](#)
- [5 LED STATUS GUIDE](#)
- [6 INSTALLATION](#)
- [7 SPECIFICATIONS](#)
- [8 BATTERY REPLACEMENT](#)
- [9 WARRANTY](#)
- [10 FAQ](#)
- [11 Documents / Resources](#)
 - [11.1 References](#)

protech

PROTECH QP6013 Temperature Humidity Data Logger



Product Usage Instructions

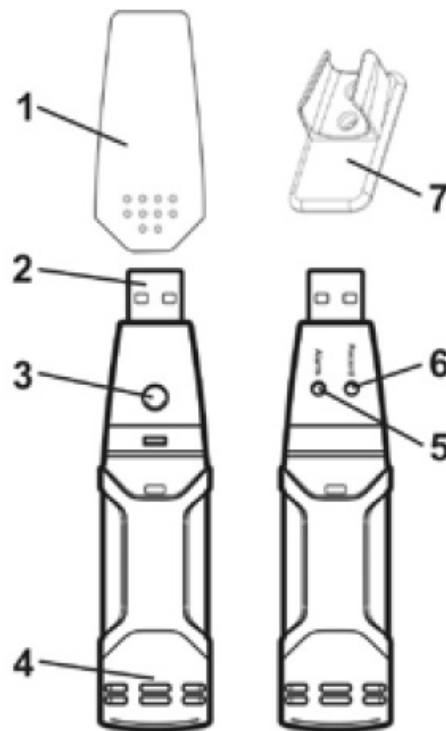
- Refer to the LED status guide to understand the different indications and actions related to the data logger's LEDs.
- Insert the Battery in the Data logger.
- Insert the data logger into a computer/Laptop.
- Go to the link provided and navigate to the downloads section.
- Ensure to only use 3.6V lithium batteries for replacement. Follow the steps below:
- Open the casing using a pointed object in the direction of the arrow.
- Pull the data logger from the casing.
- Replace/Insert the battery into the battery compartment with the correct polarity.
- Slide the data logger back into the casing until it snaps into place.

FEATURES

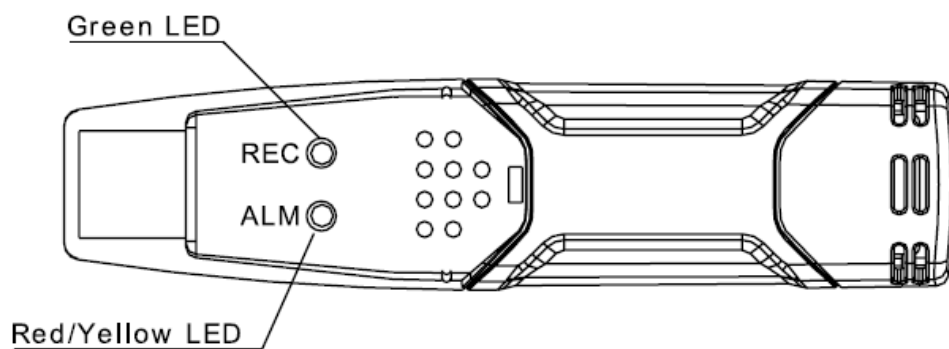
- Memory for 32,000 readings
- (16000 temperature and 16,000 humidity readings)
- Dew point indication
- Status Indication
- USB Interface
- User-Selectable Alarm
- Analysis software
- Multi-mode to start logging
- Long battery life
- Selectable measuring cycle: 2s, 5s, 10s, 30s, 1m, 5m, 10m, 30m, 1hr, 2hr, 3hr, 6hr, 12hr, 24hr

DESCRIPTION

1. Protective cover
2. USB connector to PC port
3. Start button
4. RH and Temperature sensors
5. Alarm LED (red/yellow)
6. Record LED (green)
7. Mounting clip



LED STATUS GUIDE



LEDS	INDICATION	ACTION
REC ○ ALM ○	Both LED lights are off. Logging is not active, or low battery.	Start logging. Replace the battery and download the data.
REC ● ALM ○	One green flash every 10 seconds. *Logging, no alarm condition**Green double flash every 10 sec. *Delayed start	To start, hold the start button until the Green and Yellow LEDs flash

<p>REC ○ ALM ●</p>	<p>Red single flash every 10 seconds.* Logging, low alarm for RH*** Red double flash every 10 sec. * -Logging, high alarm for RH*** Red single flash every 60 sec.</p> <p>– Low Battery****</p>	<p>Logging it will stop automatically.</p> <p>No data will be lost. Replace the battery and download data</p>
<p>REC ○ ALM ●</p>	<p>Yellow single flash every 10 seconds. * -Logging, low alarm for TEMP*** Yellow Double flash every 10 seconds.</p> <p>* -Logging, high alarm for TEMP*** Yellow single flash every 60 sec. – Logger memory is full</p>	<p>Download data</p>

- To save power, the logger's LED flashing cycle can be changed to 20s or 30s via the supplied software.
- To save power, alarm LEDs for temperature and humidity can be disabled via the supplied software.
- When both temperature and relative humidity readings exceed the alarm level synchronously, the LED status indication alternates every cycle. For example, If there is only one alarm, the REC LED blinks for one cycle, and the alarm LED will blink for the next cycle. If there are two alarms, the REC LED will not blink. The first alarm will blink for the first cycle, and the next alarm will blink for the next cycle.
- When the battery is low, all operations will be disabled automatically. NOTE: Logging automatically stops when the battery weakens (logged data will be retained). The supplied software is required to restart logging and to download logged data.

- To use the delay function. Run the datalogger Graph software, click on the computer icon on the menu bar (2nd from left,) or select LOGGER SET from the LINK pull-down menu. The Setup window will appear, and you will see there are two options: Manual and Instant. If you select the Manual option, after you click the Setup button, the logger won't start logging immediately until you press the yellow button in the logger's housing.

INSTALLATION

1. Insert the Battery in the Data logger.
2. Insert the data logger into the computer/Laptop.
3. Go to the link below and go to the downloads section there.
www.jaycar.com.au/temperature-humidity-datalogger/p/QP6013 – Click on download software and Unzip it.
4. Open the setup.exe in the extracted folder and install it.
5. Go to the extracted folder again and go to the Driver folder. – Open the “UsbXpress_install.exe” and run through the setup. (It will install the drivers needed).
6. Open the previously installed Datalogger software from the desktop or start menu and set up the datalogger according to your need.
7. If successful, you notice the LEDs are flashing.
8. Setup complete.

SPECIFICATIONS

Relative Humidity	Overall Range	0 to 100%
	Accuracy (0 to 20 and 80 to 100%)	±5.0%
	Accuracy (20 to 40 and 60 to 80%)	±3.5%
	Accuracy (40 to 60%)	±3.0%
	Overall Range	-40 to 70°C (-40 to 158° F)

Temperature	Accuracy (-40 to -10 and +40 to +70°C)	±2°C
	Accuracy (-10 to +40°C)	±1°C
	Accuracy (-40 to +14 and 104 to 158°F)	±3.6°F
	Accuracy (+14 to +104°F)	±1.8°F
Dew point temperature	Overall Range	-40 to 70°C (-40 to 158°F)
	Accuracy (25°C, 40 to 100%RH)	± 2.0 °C (±4.0°F)
Logging rate	Selectable sampling interval: From 2 secs up to 24 hrs	
Operating temp.	-35 to 80°C (-31 to 176°F)	
Battery type	3.6V lithium(1/2AA)(SAFT LS14250, Tadiran TL-5101 or equivalent)	
Battery life	1 year(typ.) depending on logging rate, ambient temperature & use of Alarm LEDs	
Dimensions/ Weight	101x25x23mm (4x1x.9") / 172g (6oz)	
Operating System	Compatible software: Windows 10/11	

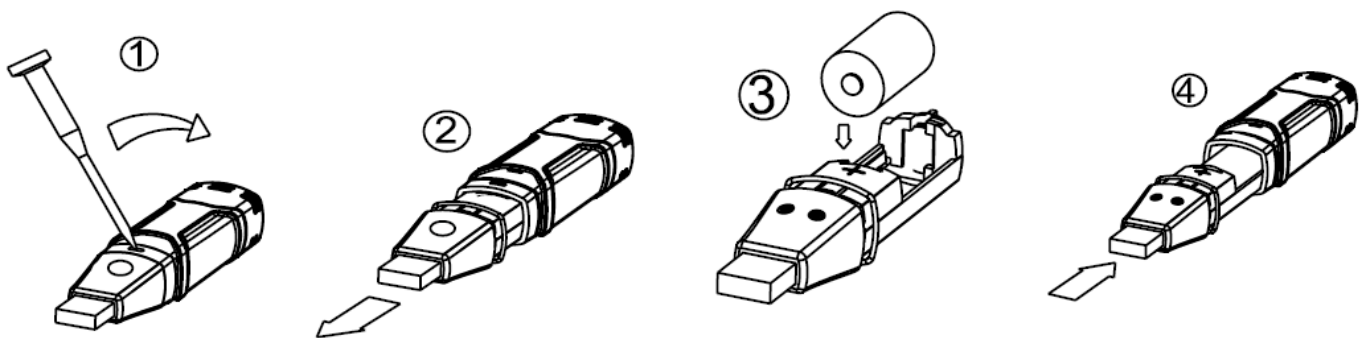
BATTERY REPLACEMENT

Only use 3.6V lithium batteries. Before replacing the battery, remove the model from the PC. Follow the diagram and explanation steps 1 through 4 below:

1. With a pointed object (e.g., a small screwdriver or similar), open the casing.
Lever the casing off in the direction of the arrow.
2. Pull the data logger from the casing.

3. Replace/Insert the battery into the battery compartment, observing the right polarity.
The two displays briefly light up for control purposes (alternating, green, yellow, green).
4. Slide the data logger back into the casing until it snaps into place. Now the data logger is ready for programming.

NOTE: Leaving the model plugged into the USB port for longer than necessary will cause some of the battery capacity to be lost.



WARNING: Handle lithium batteries carefully, and observe warnings on the battery casing. Dispose of in accordance with local regulations.

SENSOR RECONDITIONING

- Over time, the internal sensor may be compromised as a result of pollutants, chemical vapors, and other environmental conditions, which can lead to inaccurate readings. To recondition the internal sensor, please follow the procedure below:
- Bake the Logger at 80°C (176°F) at <5%RH for 36 hours followed by 20-30°C (70-90°F) at >74%RH for 48 hours (for rehydration)
- If permanent damage to the internal sensor is suspected, replace the Logger immediately to ensure accurate readings.

WARRANTY

- Our product is guaranteed to be free from quality and manufacturing defects for 12 Months.
- If your product becomes defective during this period, Electus Distribution will repair, replace, or refund the product is faulty or not fit for its intended purpose.

- This warranty will not cover modified products, misuse or abuse of the product contrary to user instructions or packaging label, change of mind, or normal wear and tear.
- Our goods come with guarantees that cannot be excluded under the Australian Consumer Law. You are entitled to a replacement or refund for a major failure and for compensation for any other reasonably foreseeable loss or damage.
- You are also entitled to have the goods repaired or replaced if the goods fail to be of acceptable quality and the failure does not amount to a major failure.
- To claim warranty, please contact the place of purchase. You will need to show a receipt or other proof of purchase. Additional information may be required to process your claim. Should you not be able to provide proof of purchase with a receipt or bank statement, identification showing name, address, and signature may be required to process your claim.
- Any expenses relating to the return of your product to the store will normally have to be paid by you.
- The benefits to the customer given by this warranty are in addition to other rights and remedies of the Australian Consumer Law concerning the goods or services to which this warranty relates.

This warranty is provided by:


- Electus Distribution
- 46 Eastern Creek Drive,
- Eastern Creek NSW 2766
- Ph. 1300 738 555

FAQ

- **How can I change the LED flashing cycle of the logger?**
 - To save power, you can change the logger's LED flashing cycle to 20s or 30s via the supplied software.
- **Can I disable the alarm LEDs for temperature and humidity?**
 - Yes, to save power, you can disable the alarm LEDs for temperature and humidity via the supplied software.
- **How can I use the delay function?**

- To use the delay function, run the datalogger Graph software, select the Manual option in the Setup window, and press the yellow button in the logger's housing after clicking the Setup button.

Documents / Resources

	PROTECH QP6013 Temperature Humidity Data Logger [pdf] User Manual QP6013, QP6013 Temperature Humidity Data Logger, QP6013, Temperature Humidity Data Logger, Humidity Data Logger, Data Logger, Logger
---	--

References

- [User Manual](#)

protech

Data Logger, Humidity Data Logger, Logger, protech, QP6013, QP6013 Temperature Humidity Data Logger, Temperature Humidity Data Logger

Leave a comment

Your email address will not be published. Required fields are marked *

Comment *

Name

Email

Website

☐ Save my name, email, and website in this browser for the next time I comment.

Post Comment

Search:

Search

[Manuals+](#) | [Upload](#) | [Deep Search](#) | [Privacy Policy](#) | [@manuals.plus](#) | [YouTube](#)

This website is an independent publication and is neither affiliated with nor endorsed by any of the trademark owners. The "Bluetooth®" word mark and logos are registered trademarks owned by Bluetooth SIG, Inc. The "Wi-Fi®" word mark and logos are registered trademarks owned by the Wi-Fi Alliance. Any use of these marks on this website does not imply any affiliation with or endorsement.