



# ProTeam 10769 GoFit Telescoping Wand Kit User Manual

[Home](#) » [ProTeam](#) » ProTeam 10769 GoFit Telescoping Wand Kit User Manual 

## Contents

- [1 ProTeam 10769 GoFit Telescoping Wand Kit](#)
- [2 ProTeam GoFit™ 6 / GoFit 6 PLUS](#)
- [3 Specifications](#)
- [4 Parts](#)
- [5 Product Usage Instructions](#)
- [6 ProTeam GoFit™ 6 / GoFit 6 PLUS](#)
- [7 Product Specifications](#)
- [8 GOFIT 3, 6, 6 PLUS & 10 PARTS](#)
- [9 Documents / Resources](#)
- [10 Related Posts](#)

ProTeam logo

**ProTeam 10769 GoFit Telescoping Wand Kit**



## **ProTeam GoFit™ 6 / GoFit 6 PLUS**

The ProTeam GoFit™ series includes the GoFit 6 and the GoFit 6 PLUS commercial vacuum cleaners which offer comfort and productivity through their high-level filtration and quick-adjust harness. The GoFit 6 PLUS features a filter change indicator light that shows when the filter needs to be checked or changed.

### **Specifications**

- Ergonomic design
- Quick-adjust harness
- 14" Xover floor tool
- Telescoping wand
- 5" upholstery tool
- 3" dust brush
- 17" crevice tool
- Filter indicator light (GoFit 6 PLUS only)
- ProLevel Filtration System with HEPA Media
  - Captures 99.82% at 0.3-.5 microns per ASTM F3150
- 12 lbs. / 5.44 kg.
- 153 CFM
- 91 in. static lift
- 1330 W / 11.7 A
- 67.9 dBA
- 6 qt. / 6,6 L
- 1054 sq. in. total area

## Parts

The following parts are available for the GoFit series vacuum cleaners:

No.	Product Name	Qty	List Price
1A	Replacement Double Swivel Elbow Cuff	1 ea.	\$13.13
1B	Replacement Double Swivel Straight Cuff	1 ea.	\$7.83
2	48 Static-Dissipating Hose (GoFit 6 PLUS)	1 ea.	\$39.67
31	Yellow Cord Guide w/ Screws	1 ea.	\$37.92
32	Fastener Package	1 ea.	\$7.83
101678	50' Extension Cord (Not shown)	1 ea.	\$48.66

## Product Usage Instructions

1. Attach the appropriate tool to the telescoping wand.
2. Adjust the harness to fit comfortably on your body.
3. Plug in the vacuum cleaner and turn it on.
4. Begin cleaning the desired area by moving the vacuum cleaner back and forth over the surface.
5. If the filter change indicator light on the GoFit 6 PLUS turns on, check the filter and replace it if necessary.
6. After use, unplug the vacuum cleaner and store it in a safe place.
7. Clean or replace any parts as needed to maintain optimal performance.

## Standard Configuration

- 14" Xover Floor Tool
- Telescoping Wand
- 5" Upholstery Tool
- 3" Dust Brush
- 17" Crevice Tool

## Related Products

- 107314 Intercept Micro Filters, 10/pk (open collar)    \$22.58
- 107374 Intercept Micro Filters, 10/pk (closed collar)    28.59

## GoFit 6 Optional Configurations

- **107697 w/Xover Two-Piece Wand Tool Kit B (107098)** \$710
- **107698 w/ProBlade Carpet Floor Tool Kit (107530)** 710
- **107699 w/ProBlade Carpet and Hard Surface Floor Tool Kit (107532)** 785
- **107700 w/15" Carpet Sidewinder Kit A (106820)** 725
- **107701 w/18" Carpet Sidewinder Kit B (106841)** 755

- 107702 w/15" Carpet and Hard Surface Sidewinder Kit C (107463) 795
- 107703 w/Remediation Kit (107466) 775
- 107704 w/Pest Management Tool Kit (103439) 935
- 107736 w/Xover Performance Telescoping Wand Tool Kit C (107099) 710
- 107749 w/Two-Piece Wand (101338) and Xover Tool (107016) 685
- 107750 w/Telescoping Wand (107628) and Xover Tool (107016) 690

#### GoFit 6 PLUS Optional Configurations

- 107706 w/Xover Two-Piece Wand Tool Kit B (107098) \$750
- 107707 w/ProBlade Carpet Floor Tool Kit (107530) 750
- 107708 w/ProBlade Carpet and Hard Surface Floor Tool Kit (107532) 825
- 107709 w/15" Carpet Sidewinder Kit A (106820) 770
- 107710 w/18" Carpet Sidewinder Kit B (106841) 795
- 107711 w/15" Carpet and Hard Surface Sidewinder Kit C (107463) 835
- 107712 w/Remediation Kit (107466) 815
- 107737 w/Xover Performance Telescoping Wand Tool Kit C (107099) 750

#### ProTeam GoFit™ 6 / GoFit 6 PLUS

10769 GoFit 6 w/Xover Telescoping Wand Kit D (107100) \$710

107705 GoFit 6 PLUS w/Xover Telescoping Wand Kit D (107100) \$750

ProTeam's latest commercial vacuum cleaner series includes the GoFit 6 and the GoFit 6 PLUS. Both offer unparalleled productivity and comfort experienced in the quick-adjust harness and high-level filtration. And, unique to the 6 PLUS is a filter change indicator light that shows when there's a clog or when the filter needs to be checked/changed.



#### Product Specifications

- Weight: 12 lbs. / 5.44 kg.
- Motor Airflow: 153 CFM
- Static Lift: 91 in.
- Motor: 1330 W / 11.7 A

- Decibel: 67.9 dBA
- Capacity: 6 qt. / 6,6 L
- ProLevel Filtration® w/Four Levels of Filtration: 1054 sq. in. total area

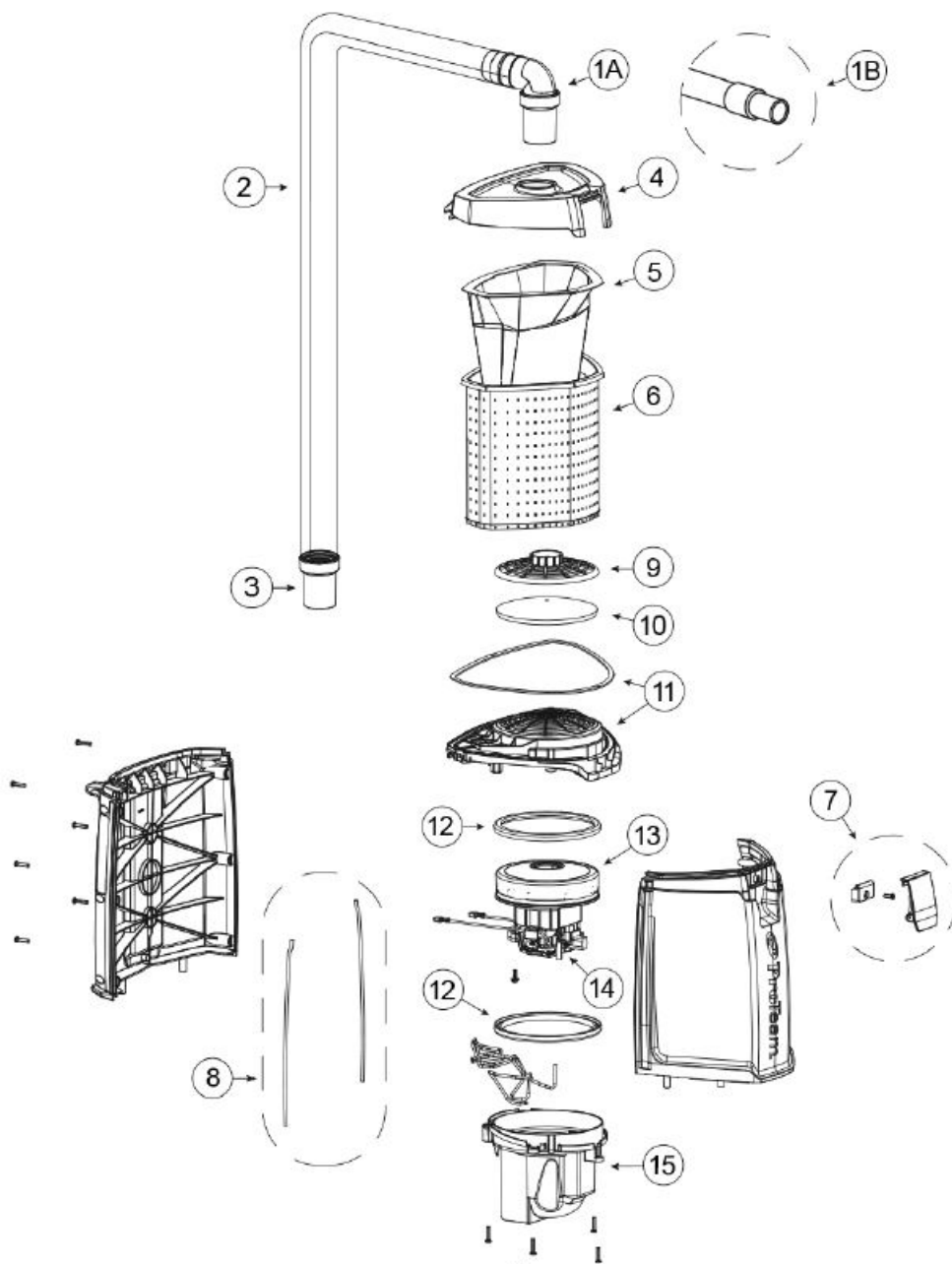
### ProLevel Filtration System with HEPA Media

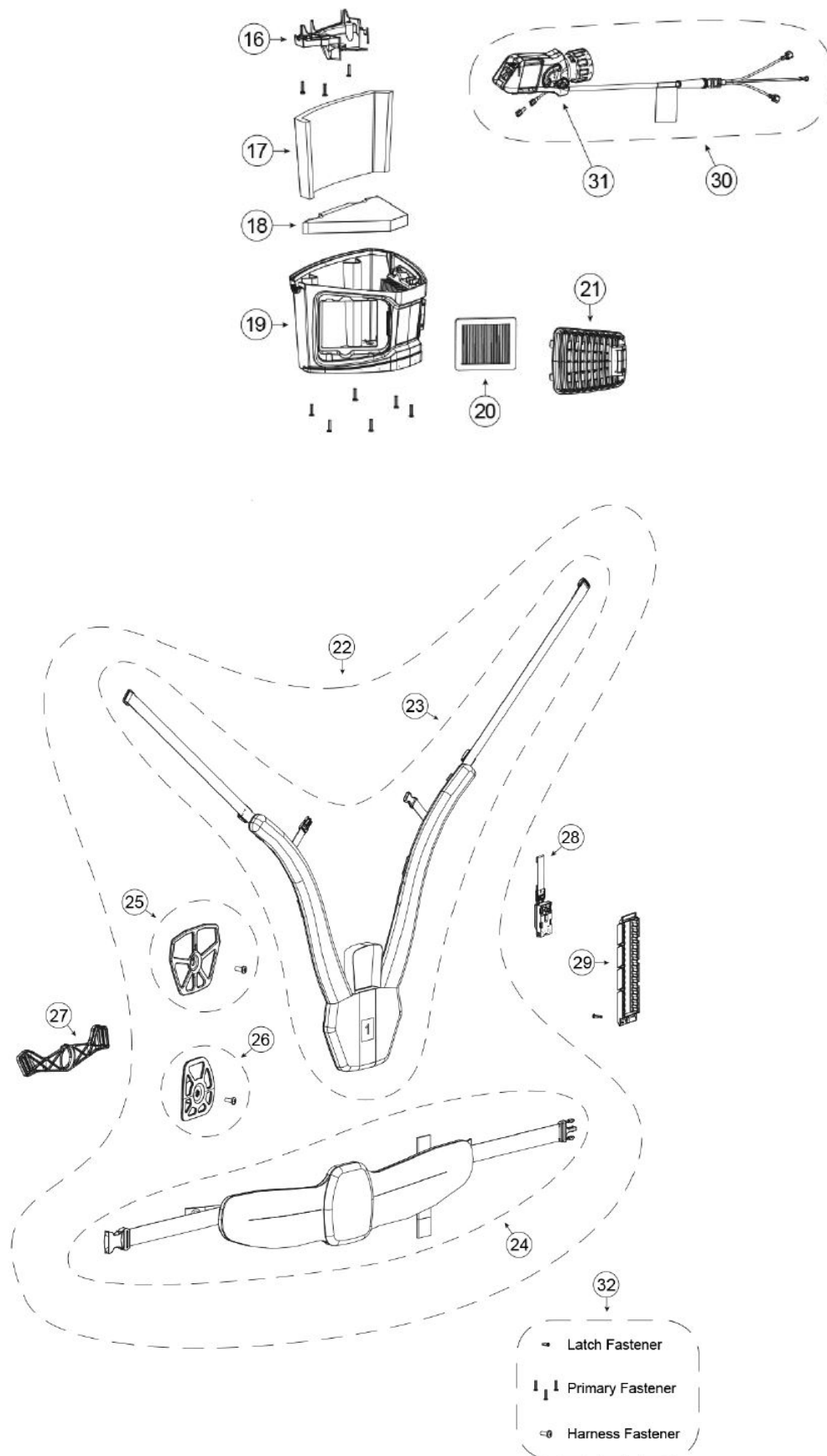
Captures 99.82% at 0.3-.5 microns per ASTM F3150

### Limited Warranty

- 3 years parts, labor and motor on vacuum
- Limited lifetime on molded body parts

### GOFIT 3, 6, 6 PLUS & 10 PARTS





No.		Product Name	Qty List Price
1A	101928	Replacement Double Swivel Elbow Cuff	1 ea. 13.13
1B	100694	Replacement Double Swivel Straight Cuff	1 ea. 7.83
2	107648	48" Static-Dissipating Hose	1 ea. 39.67


		w/Non-Replaceable Elbow and Straight Cuffs	
	100505	48" Static-Dissipating Hose w/ Straight Cuffs	1 ea. 37.92
3	100694	Replacement Double Swivel Straight Cuff	1 ea. 7.83
4	843694	Purple Cap	1 ea. 36.47
5	107313	Intercept Micro Filter (GoFit 10)	10/pk 27.32
	107314	Intercept Micro Filter (GoFit 6)	10/pk 22.58
	107666	Intercept Micro Filter (GoFit 3)	10/pk 19.67
6	834000	Micro Cloth Filter (GoFit 10)	1 ea. 42.86
	834072	Micro Cloth Filter (GoFit 6)	1 ea. 35.40
	843966	Micro Cloth Filter (GoFit 3)	1 ea. 32.25
7	510779	Latch Assembly Complete w/ Retainer and Screw	1 ea. 8.74
8	834035-5	Gasket Tank 10 QT	2 ea. 3.68
	834035-3	Gasket Tank 6 QT	2 ea. 3.68
	834035-4	Gasket Tank 3 QT	2 ea. 3.68
9	510183	Dome Filter w/ Foam Media (includes: 10)	1 set 11.43
10	510184	Foam Filter Media for Dome Filter	1 ea. 3.48
11	510777	Upper Motor Support w/ Gasket	1 ea. 16.94
12	510780	Motor Gaskets Upper and Lower	1 ea. 4.77
13	844193	Motor Assembly 1300W	1 ea. 158.22
	844545	Motor Assembly with Lead (GoFit 6 PLUS)	1 ea. 162.96
14	841933	Carbon Brush Set	2 ea. 30.37
15	510781	Lower Motor Support w/ Screws	1 set 11.03
16	510776	Cover Wire w/ Screws	1 set 5.36
17	843963	Upper Foam Pad	1 ea. 3.80
18	843964	Lower Foam Pad	1 ea. 3.76
19	510778	Lower Housing Assembly w/ Screws	1 set 25.01
20	844488	Exhaust Filter Made from HEPA Media	2 ea. 16.73
21	843848	Exhaust Filter Door	1 ea. 9.24
22	844073	Harness Complete Assembly	1 ea. 101.36
23	844665	Upper Harness Assembly	1 ea. 51.03
24	843939	Lower Harness Assembly	1 ea. 49.93
25	510771	Upper Harness Plate w/ Screw	1 ea. 9.01

26	510772	Lower Harness Plate w/ Screw	1 ea.	9.15
27	843842	Lower Harness Articulating Arm	1 ea.	7.42
28	843947	Harness Quick Adjuster Assembly	1 ea.	8.54
29	510773	Harness Quick Adjust Holder w/ Screw (GoFit 10)	1 set	7.54
	510774	Harness Quick Adjust Holder w/ Screw (GoFit 6)	1 set	7.54
	510775	Harness Quick Adjust Holder w/ Screw (GoFit 3)	1 set	7.54
30	844156	Switch Box Assembly	1 ea.	47.44
	844156-2	Switchbox Assembly w/ Internal Electronics	1 ea.	77.28
		(GoFit 6 PLUS)		
31	510782	Yellow Cord Guide w/ Screws	1 ea.	9.98
32	510783	Fastener Package	1 ea.	4.59
	101678	50' Extension Cord (Not shown)	1 ea.	48.66

Highlighted SKUs are shared parts with Super Coach Pro 6/10 vacuums

The filtration value of ProTeam's ProLevel Filtration System in this vacuum is achieved by the use of a multi-stage filtration system, including intercept micro filter, micro cloth filter, plastic cage with foam filter, and post-motor filter made from HEPA media, as tested per ASTM F3150. Specification calculations are based on average motor performance.

## Documents / Resources

	<p><a href="#">ProTeam 10769 GoFit Telescoping Wand Kit</a> [pdf] User Manual</p> <p>10769 GoFit Telescoping Wand Kit, 10769, GoFit Telescoping Wand Kit, Telescoping Wand Kit, Wand Kit</p>
---	--