

PROTCETION EVOLVED X1 SmartAccess Key Door Lock Instruction Manual

[Home](#) » [PROTCETION EVOLVED](#) » **PROTCETION EVOLVED X1 SmartAccess Key Door Lock Instruction Manual**



Contents

- [1 PROTECTION EVOLVED X1 SmartAccess Key Door Lock](#)
- [2 introduction](#)
- [3 install the Smart Lock](#)
- [4 FCC Warning](#)
- [5 Documents / Resources](#)
- [6 Related Posts](#)

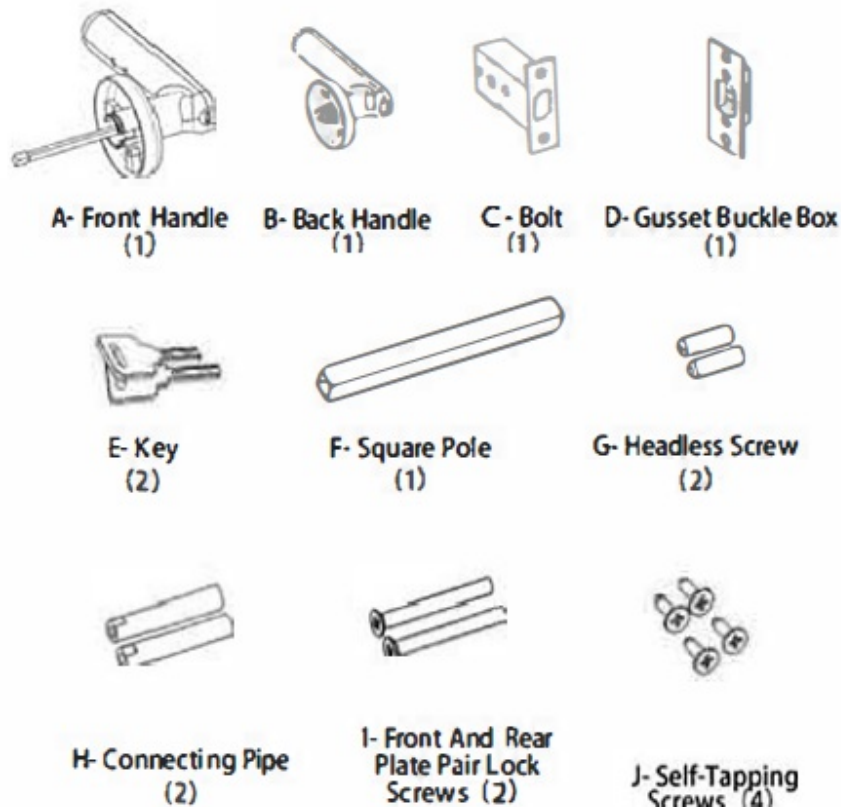


PROTECTION EVOLVED X1 SmartAccess Key Door Lock

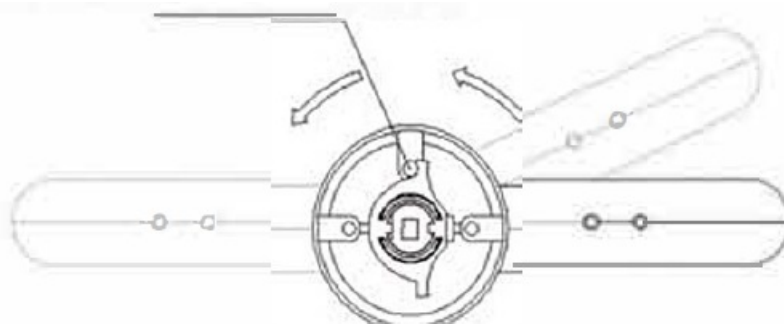


introduction

1. After unpacking the product, check whether you have the following accessories.



Determine the! Handle Direction



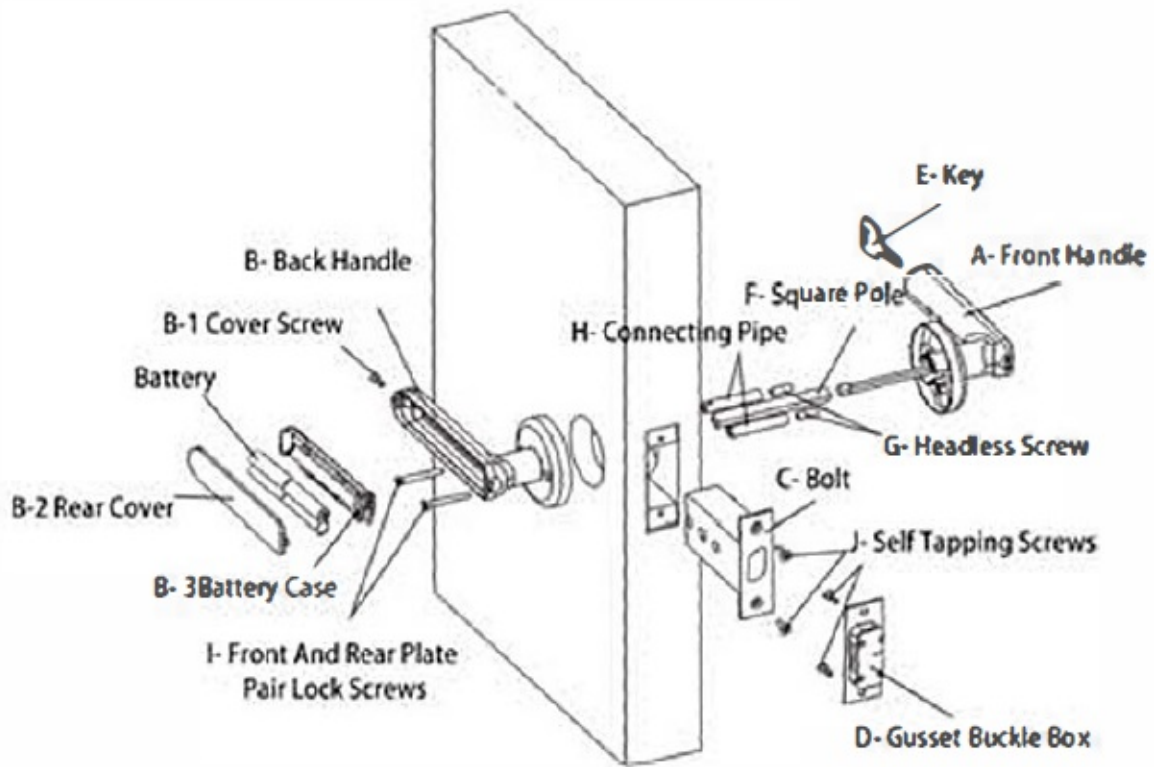
1. Adjust the handle direction according to the door opening direction. If it needs to be flipped, do as shown below: Loosen the adjusting screws on the front handle, rotate the handle 180 degrees, then tighten the adjusting screws.

install the Smart Lock

1. Use the SelfTapping Screw (J) to fix the Bolt (C) with the Gusset Box (D) on the door.
2. Screw the Headless Screws (G) into the Connecting Pipes (H). Make sure this is put in the correct way. Otherwise, it is slightly annoying to take out and redo. Then, screw these connecting pipes into the Front Handle (A). Afterward, insert the Square Pole (F) through the power cord into the square hole of the Front Handle (A).
3. Install this front handle assembly through the door by passing the entire assembly [power cord Square Pole (F) and Connecting Pipes (H)J through the holes of the Bolt (C).
4. Loosen the Cover Screw (B-1) of the Rear Handle (B) and take out the Rear Cover (8-2) and Battery Case (8-

3).

5. Install the Rear Handle (8) on the door and ensure the following: The power cord and the square pole on the front handle correspond to the square hole of the rear handle. Use the two Front and Rear Plate Pair Locking Screws (I) to lock the rear handle with the front handle.
6. Insert the power cord plug into the Battery Case (B-3). Put in the 4 MA alkaline batteries. At this time, the administrator and user can be entered through the buttons on the battery case.
7. After the setup is completed, put the Battery Case (B-3) and the excess power cord in the rear handle and close the Rear Cover (B-2). Use the Cover Screw (B-1) to tighten and seal the rear cover. The installation is complete.



Door Lock Installation Diagram

Product initialization administrator password: 123456 ifl

(This password is used to unlock the device until you have any passcode or fingerprint set up on the Protection Evolved smartphone application)•

1. How to unlock the device using your registered fingerprint: (to register fingerprints view the app user manual)
 1. Simply press the registered finger on the circle. The green light should turn on and the verification should be announced as successful with a long beep. After the lock is opened, the lock will close after 5 seconds.
 2. If the verification fails, the device will beep three times with the red light flashing at the same time. Please re-verify the fingerprint.
2. How to unlock the device using your registered passcode: (to register passcodes view the app user manual)
 1. Touch the glass where the "!!" is to wake up the device. Once the numbers are lit up, enter the 6-digit password and press the "&•" key to confirm. If the password is correct the green light should turn on and the verification should be announced as successful with a long beep. After the lock is

opened, the lock will close after 5 seconds.

2. If the verification fails, the device will beep three times with the red light flashing at the same time. Please re-verify the passcode.

Low Battery Reminders

1. When the battery is low, unlocking the device will result in a continuous rapid: "beep, beep, beep" sound.
2. There is also a battery indicator on the smartphone application.

The lock can still be opened up to 100 times after the initial low electricity prompt. However, please replace the batteries as soon as possible to avoid effects on normal usage.

Restoring to Factory Settings

long press the reset button for 4 seconds. Two clicks should be heard. The lock has been reset to factory settings, and all fingerprints, passwords, and phone admins are wiped out.

FCC Warning

This device complies with part 15 of the FCC Rules. Operation is subject to the following two conditions: (1) This device may not cause harmful interference, and (2) this device must accept any interference received, including interference that may cause undesired operation.

Any Changes or modifications not expressly approved by the party responsible for compliance could void the user's authority to operate the equipment.

Note: This equipment has been tested and found to comply with the limits for a Class B digital device, pursuant to part 15 of the FCC Rules. These limits are designed to provide reasonable protection against harmful interference in a residential installation. This equipment generates uses and can radiate radio frequency energy and, if not installed and used in accordance with the instructions, may cause harmful interference to radio communications. However, there is no guarantee that interference will not occur in a particular installation. If this equipment does cause harmful interference to radio or television reception, which can be determined by turning the equipment off and on, the user is encouraged to try to correct the interference by one or more of the following measures:

- Reorient or relocate the receiving antenna.
- Increase the separation between the equipment and receiver.
- Connect the equipment into an outlet on a circuit different from that to which the receiver is connected.
- Consult the dealer or an experienced radio/TV technician for help.

The device has been evaluated to meet general RF exposure requirement. The device can be used in portable exposure conditions without restriction.

Documents / Resources



[PROTCETION EVOLVED X1 SmartAccess Key Door Lock](#) [pdf] Instruction Manual
X1, 2A7WA-X1, 2A7WAX1, SmartAccess Key Door Lock, Door Lock, SmartAccess Door Lock