



# PROSTER PST187 Multi Purpose Communication Network Wire Tracker User Manual

[Home](#) » [Proster](#) » PROSTER PST187 Multi Purpose Communication Network Wire Tracker User Manual 

## Contents

- 1 PROSTER PST187 Multi Purpose Communication Network Wire Tracker
- 2 Product Specifications
- 3 Packaging List
- 4 Parts
- 5 Accessories
- 6 Electric Power Cable and Line Tracking Function
- 7 Network Line Verification Function
- 8 Other Function
- 9 Documents / Resources
  - 9.1 References
- 10 Related Posts

# PROSTER

**PROSTER PST187 Multi Purpose Communication Network Wire Tracker**



**Customers:** Telecom office/Internet bar/ Telecom engineering company/ Network engineering company/ Electric power company/Army and others working with metal lines.

**Applicable Scope:** Telecom network line engineering and routine servicing; computer network line maintenance; other metal wire line engineering and maintenance.

**Product Specifications**

ITEMS	SPECS	
Product Name	Multi-purpose Communication Network Wire Tracker	
Power Specs	DC,9V laminated battery	
Max.Operating Current	Emitter	≤10mA
	Receiver	≤30mA
Signal Transmission Format	Multi-frequency pulse	
Signal Output Level	8Vp-p	
Signal Transmission Distance	≥3km	

**Packaging List**

1. Emitter	1set	5. Alligator clip adapter	1set
2. Receiver	1set	6. RJ45 adapter	1pc
3. Earphone	1pc	7. User Manual	1pc
4. RJ11 adapter	1pc	8. Network Wire Stripper	1pc

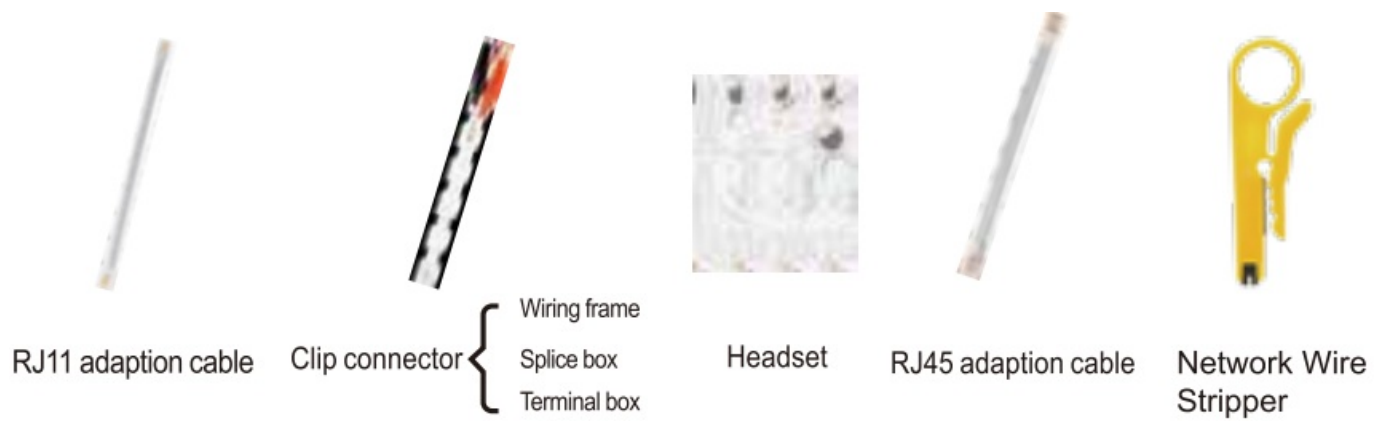
You can track target wires by connecting the wire tracker with all kinds of Ethernet exchangers/ routers/PCs when they are powered on.

## Parts

### Parts of emitter/Parts of receiver



## Accessories



## Electric Power Cable and Line Tracking Function



1. Connect the emitter and the metal wire to be found with an alligator clip.
2. Move the function selector switch of the emitter to "SCAN", then the wire finding indicator "STATUS" will be on, which indicates the wire tracker works normally.
3. Press down the inching button of the receiver and use the probe of the receiver to check target cables.

**Note:** Do not use this device on any line with strong electricity.

**Among numerous wires and cables, quickly track the target one.**

Compare the strength of "beep beep" sound and the luminance of the indicator when tracking. The line with the strongest sound and brightest light is the target one.



## Network Line Verification Function



1. Insert the RJ45 plugs on both ends of the network cable into the corresponding port of the emitter and the receiver.
2. Move the function selector switch of the emitter to "TEST", then the testing indicator "VERIFY" will be on, indicating that the emitter works normally.
3. 18 wire sequence indicators determine such characteristics as short circuit, broken circuit, open circuit and so on.

**Note:** Do not use this device on any line with strong electricity.

### Network Cable Sequence Verification

This device supports the direct verification of cable sequence when the exchanger is switched on.



No network tester is needed any more for wiring outside, very convenient!

### Replace network tester



18 wire sequence indicators determine such characteristics as short circuit, broken circuit, open circuit and so on. The result is very accurate with intuitive readings.

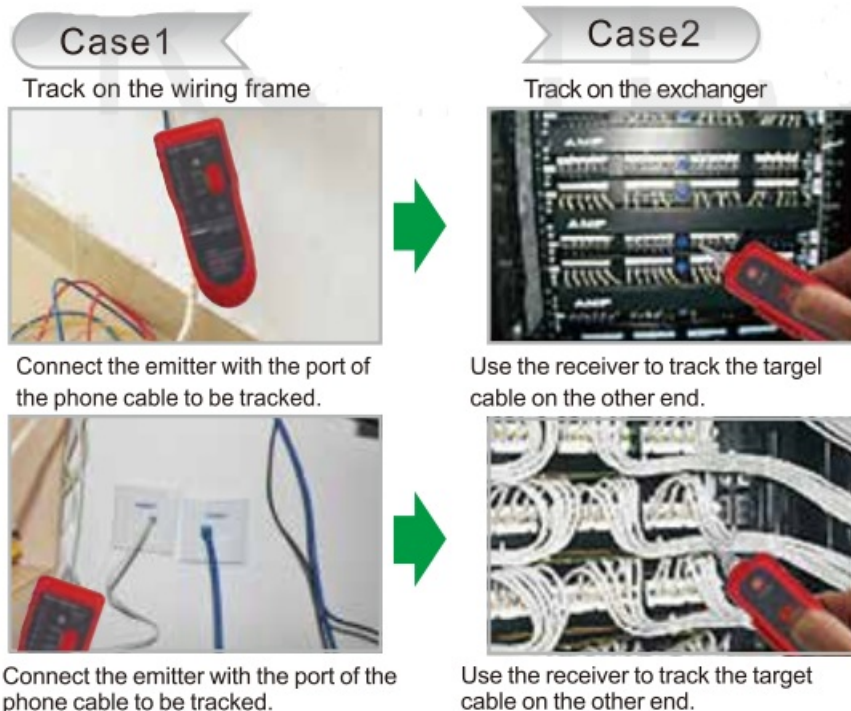
With automatic scanning, it can quickly test cables such as twisted pairs 1, 2, 3, 4, 5, 6, 7, 8 and G cables piece by piece (pair by pair) , and determines the one that is in disorder, short circuit, open circuit and so on.





1. Directly insert the modular side of the phone cables into the RJ 11 port of the wire tracker.
2. Move the function selector switch of the emitter to “SCAN”, then the wire finding indicator “STATUS” will be on, which indicates the wire tracker works normally.
3. Press down the inching button of the receiver and use the probe of the receiver to check target cable.

**Among numerous wires and cables, quickly track the target one.**



## Other Function

### Open Circuit and Short Circuit Test

Move the function selector switch of the emitter to the “TEST” position, press the function switching button of the emitter for 2s. In such case. The VERIFY indicator will change from flashing to continuously on. Insert the modular plug with alligator clip the RJ11 port; respectively clamp the two ends of the cable to be tracked with two clips. If the cable is in short circuit, the “1” indicator of the emitter will not be on. The electric resistance of the cable depends on the brightness of the status indicator. More resistance if the indicator is less bright. Vice versa.

### DC Level Testing Function

Move the function selector switch of the emitter to the “TEST” position, press the function switching button of the emitter for 2s. In such case, the VERIFY indicator will change from flashing to continuously on. Insert the modular plug with alligator clip the RJ11 port; respectively clamp the two ends of the cable to be tracked with two clips. If the STATUS indicator is red the pole clamped by the red clip is positive; if the STATUS indicator is green, the pole clamped by the red clip is negative. The DC level depends on the brightness of the status indicator. More DC level if the indicator is more bright Vice versa.



### Low Voltage Hinting Function

Move the function selector switch of the emitter to the “SCAN” position. If the cell voltage is below 6.0V, the STATUS indicator and the VERIFY indicator of the emitter will flash at the same time.

### Headset Function

In a noisy environment, you can put on the headphone to avoid external interference.



### Equipped Lamp

At night or in a dark environment, you can turn on the illuminating lamp, which can be helpful in operation.




### Volume Adjustment Function

When tracking wires, you can adjust the volume knob at the right side of the receiver to make the volume proper.

### Energy-saving and Eco-friendly

Slightly touching switch and delaying shut down makes the wire tracker energy-saving and Eco-friendly.

## Documents / Resources

	<p><a href="#">PROSTER PST187 Multi Purpose Communication Network Wire Tracker</a> [pdf] User Manual  PST187 Multi Purpose Communication Network Wire Tracker, PST187, Multi Purpose Communication Network Wire Tracker, Purpose Communication Network Wire Tracker, Communication Network Wire Tracker, Network Wire Tracker, Wire Tracker, Tracker</p>
---	--

## References

- [User Manual](#)

Manuals+.