



Contents [[hide](#)]

- [1 PROSLAT SLPACK14 Core Toolboxes](#)
- [2 Product Specifications](#)
- [3 Product Usage Instructions](#)
- [4 Hardware List](#)
- [5 Safety Information](#)
- [6 WEIGHT CAPACITY](#)
- [7 Pre-Installation](#)
- [8 HARDWARE LIST](#)
- [9 Assembly instructions](#)
- [10 Adjust the magnets strength on the drawers](#)
- [11 How to Set Your Personal Code](#)
- [12 Warranty](#)
- [13 FAQ](#)
- [14 Documents / Resources](#)
 - [14.1 References](#)



PROSLAT SLPACK14 Core Toolboxes



Product Specifications

- Base Drawer Cabinet Shell:
 - Capacity: 400 lb (181 kg)
- Work Surface:
 - Capacity: 500 lb (227 kg)

Product Usage Instructions

Tools Required

- Level

Hardware List

Assembly Instructions

Two people are highly recommended for this step.

- Do not replace the drawers until this step is mentioned.
- Connect base modules:
 - Install casters on the bases.

Care and Cleaning

For care and cleaning instructions, please refer to the manual or contact customer support.

QUESTIONS, PROBLEMS, MISSING PARTS? CALL PROSLAT CUSTOMER SERVICE
8 A.M. – 5 P.M., EST, MONDAY – FRIDAY • 1-[888-691-2944](tel:888-691-2944)

THANK YOU/ MERCI

We appreciate the trust and confidence you have placed in Proslat through the purchase of this product. Visit www.proslat.com to see our full line of products available for your home storage needs. Thank you for choosing Proslat!

Safety Information

TEAM LIFT

Due to excess weight, 2 people are recommended for installation. Failure to do so may result in product damage or risk of back or other injury.



WEIGHT CAPACITY & SAFETY

- NEVER allow children to stand, climb, or hang on drawers, doors, or shelves.
- Close and lock the doors and drawers before moving this product.
- DO NOT alter this product.
- Keep the product on level surfaces.
- Each drawer supports up to 400 lbs. For stability, distribute weight across multiple drawers.
- Avoid placing over 100 lbs in the top drawer alone, as this may cause tipping.
- If heavier top loading is required (e.g., 200 lbs+), install counterweights at the base for added safety (sold separately).

WEIGHT CAPACITY



Base drawer cabinet shell Coffre de base Load capacity /charge: 4000 lb (1814 kg)

Maximum drawer capacity / tiroirs : 400 lb (181 kg)

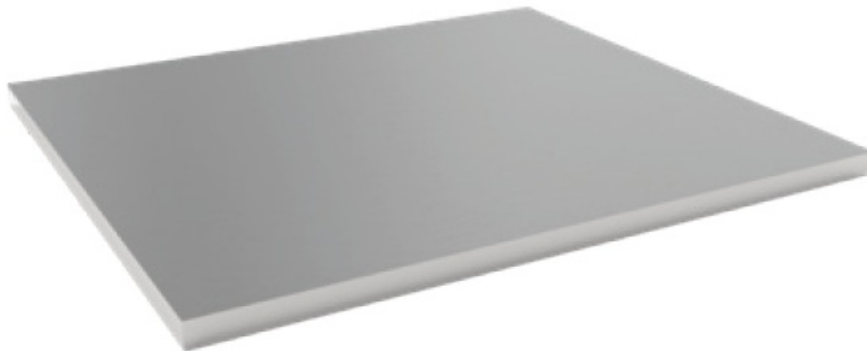


Other drawer modules /Load capacity /**charge**: 2000 lb (907 kg)

Maximum drawer capacity / tiroirs : 400 lb (181 kg)



Door modules /Load capacity charge: 2000 lb (907 kg)

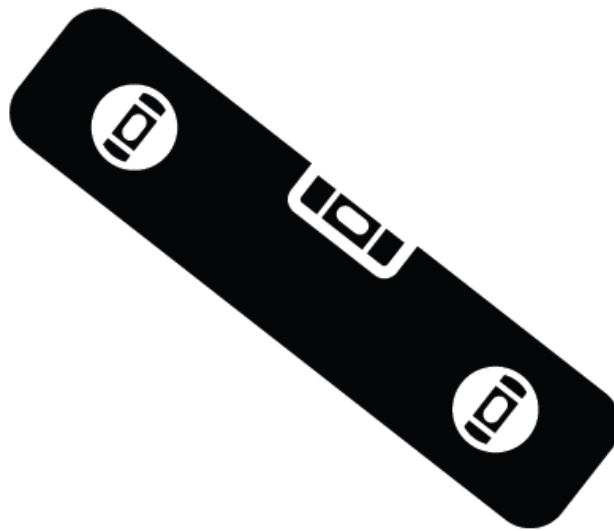


Work surface Surface de travail Load capacity /charge: 500 lb (227 kg)

Pre-Installation

TOOLS REQUIRED

Phillips and Robertson screwdriver



Level



Ratchet set Ensemble



Adjustable wrench or pliers

HARDWARE LIST

Pack Paquet	Description	Picture / Image
SLPACK14 CR-PK-01	Core Hardware Pack Base Black / Matériel coffre CORE de base noir	
SLPACK15 CR-PK-02	Core Hardware Pack Base Zinc / Matériel coffre CORE de base zinc	

SLPACK16 CR-PK-03	Core Hardware Pack TOP Black / Matériel de base pour modules superposé noir	
----------------------	---	--

Pack Paquet	Description	Picture / Image
SLPACK17 CR-PK-04	Core Hardware Pack TOP Zinc / Matériel de base pour modules superposé zinc	
SLPACK18 CR-PK-05	Core Hardware Pack Tall Black / Matériel pour grand coffre noir	
SLPACK19 CR-PK-06	Core Hardware Pack Tall Black / Matériel pour grand coffre zinc	

Care and cleaning

- Indoor use only
- Keep on a levelled surface.
- Respect weight capacities found on page 2 of this booklet.
- Check all the screws and nuts periodically for tightness. Tighten when necessary.
- Regularly clean the surfaces with a soft rag and water.

Assembly instructions

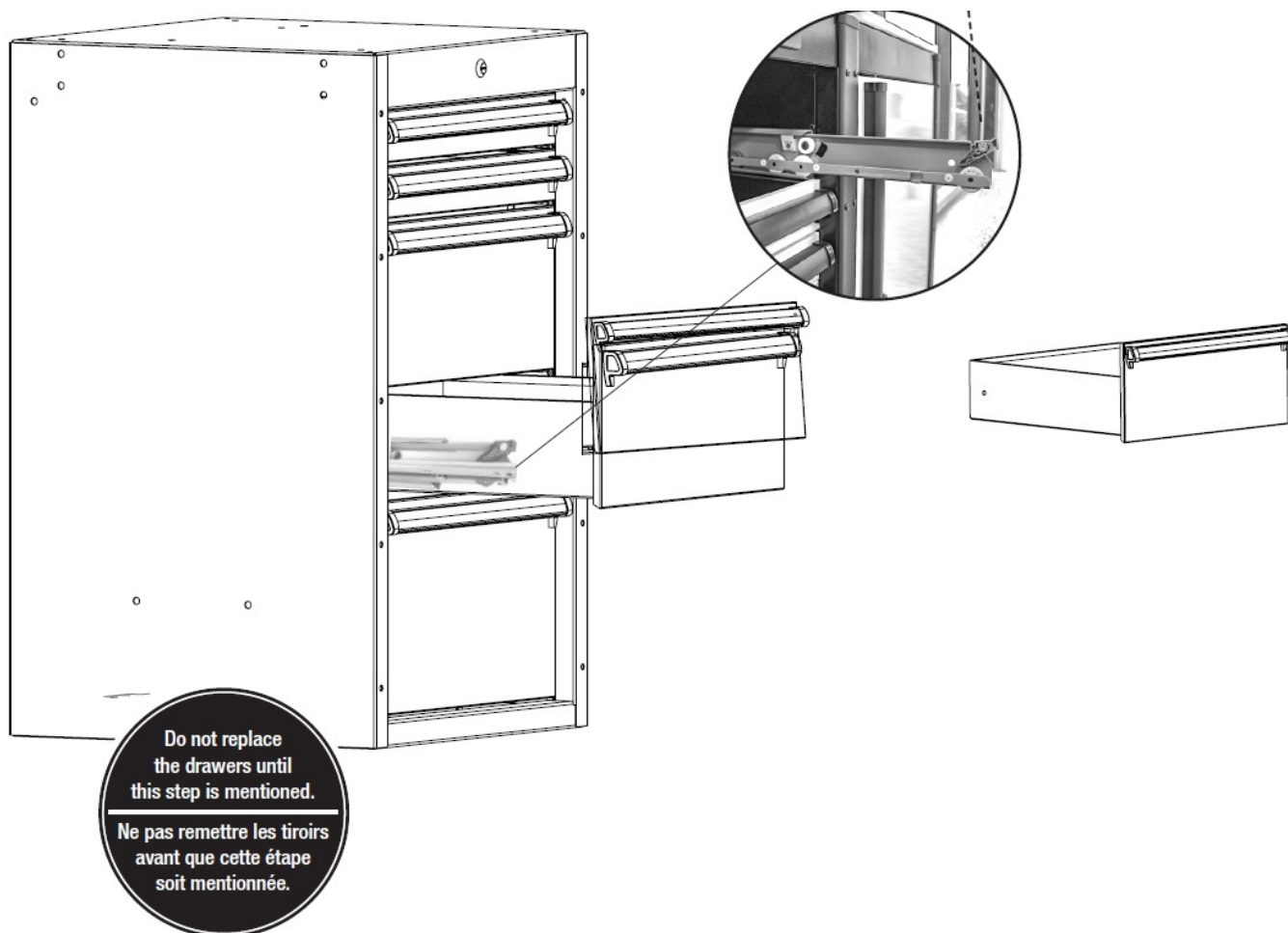
Removal of drawers (required for following steps)

- Open the drawer
- Push down on the plastic triggers of the slide on both sides to release the drawer.
- Slightly lift the drawer upwards, then pull it out completely.



WARNING: Two people are highly recommended for this step.

AVERTISSEMENT: Deux personnes sont fortement

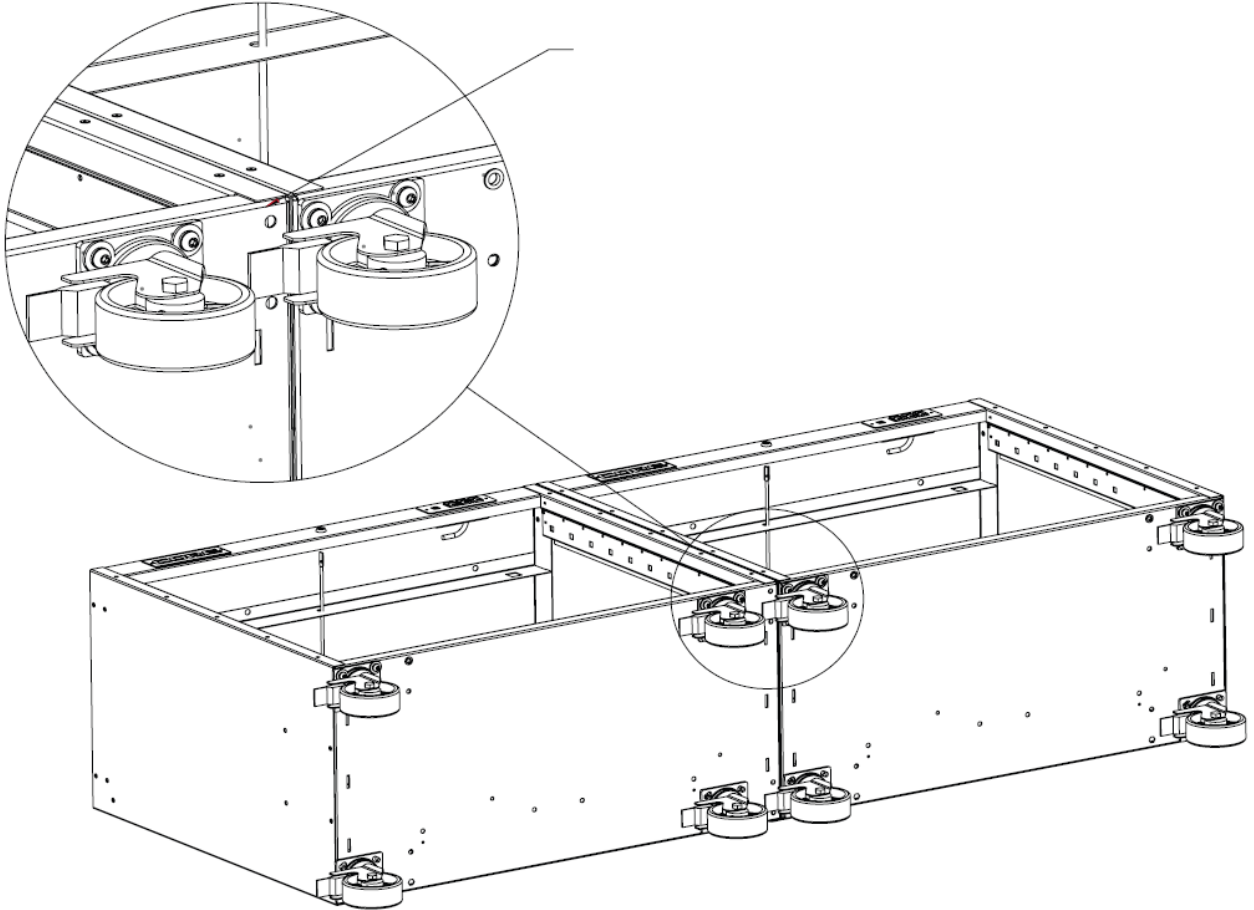


Re-install the drawers

- Align the drawer's slide tracks with the rails on the inside of the cabinet
- Gently close the drawer completely to pass the stopper
- Open the drawer again and re-engage the slide triggers by pushing them up to lock them in place

Connect base modules

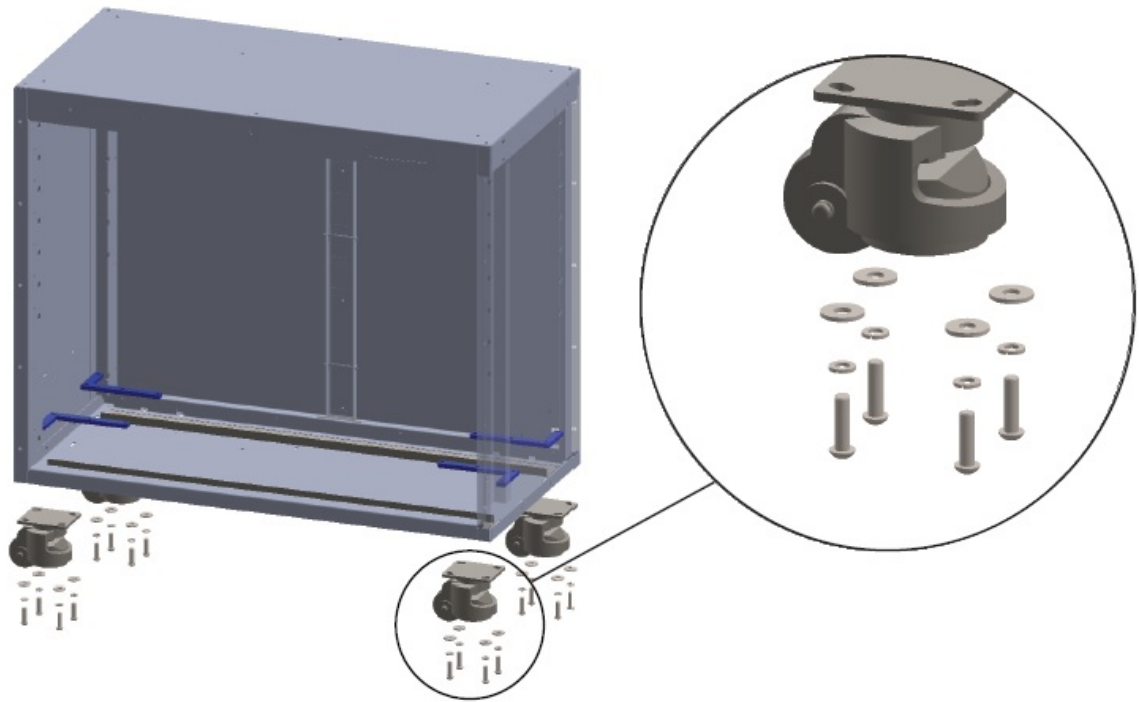
- To connect modules together there are provided bolts to connect them on the insides. Then we have connectors that are installed on the outside of the two modules on the frame, with provided screws.



In the case of attaching two main CORE together. To avoid interference of two casters at the connecting sides. In one of the cabinet install casters at provided offset holes.

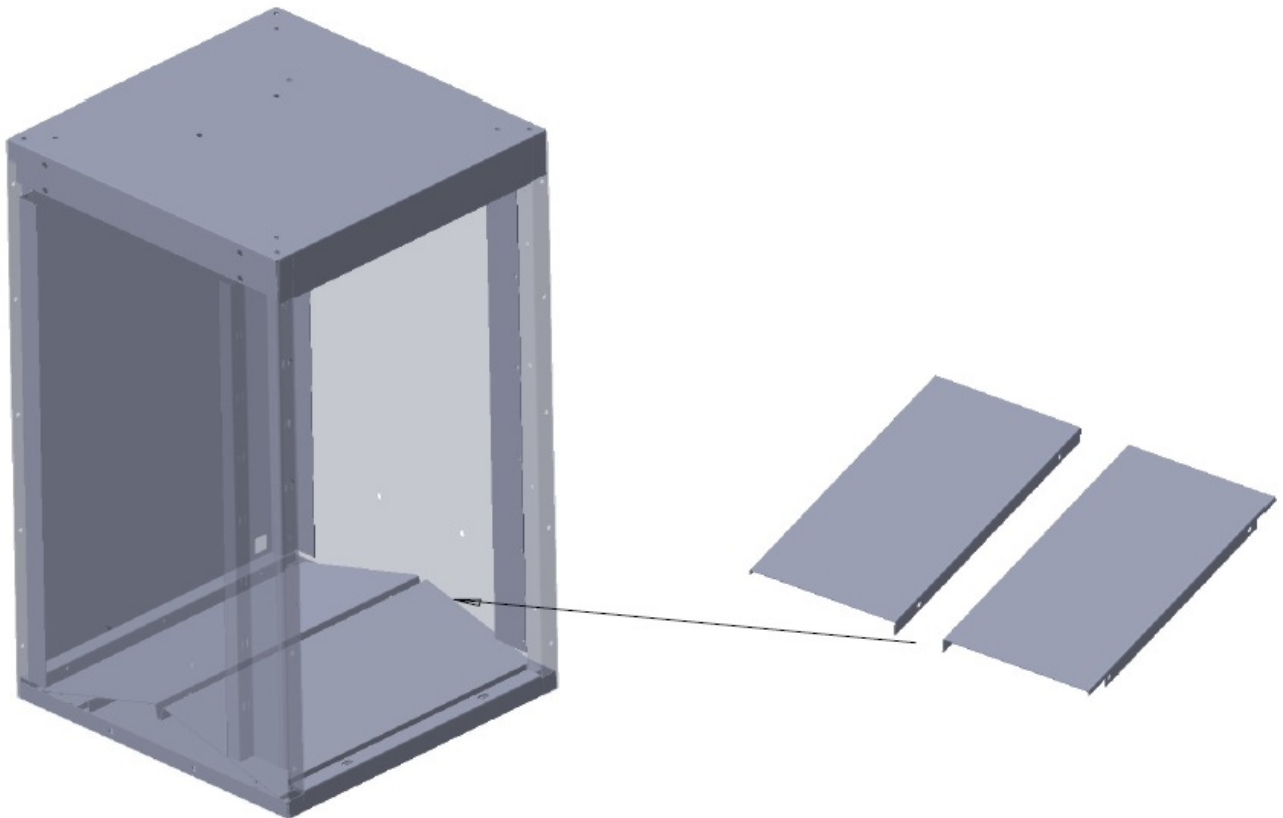
Install casters on the bases.

- Empty cabinet, place cardboard on floor and lay cabinet on its back or upside down.
- Using the provided L brackets, place them inside the toolbox in all 4 corners, and install the casters on the bottom of the toolbox using the provided hardware.



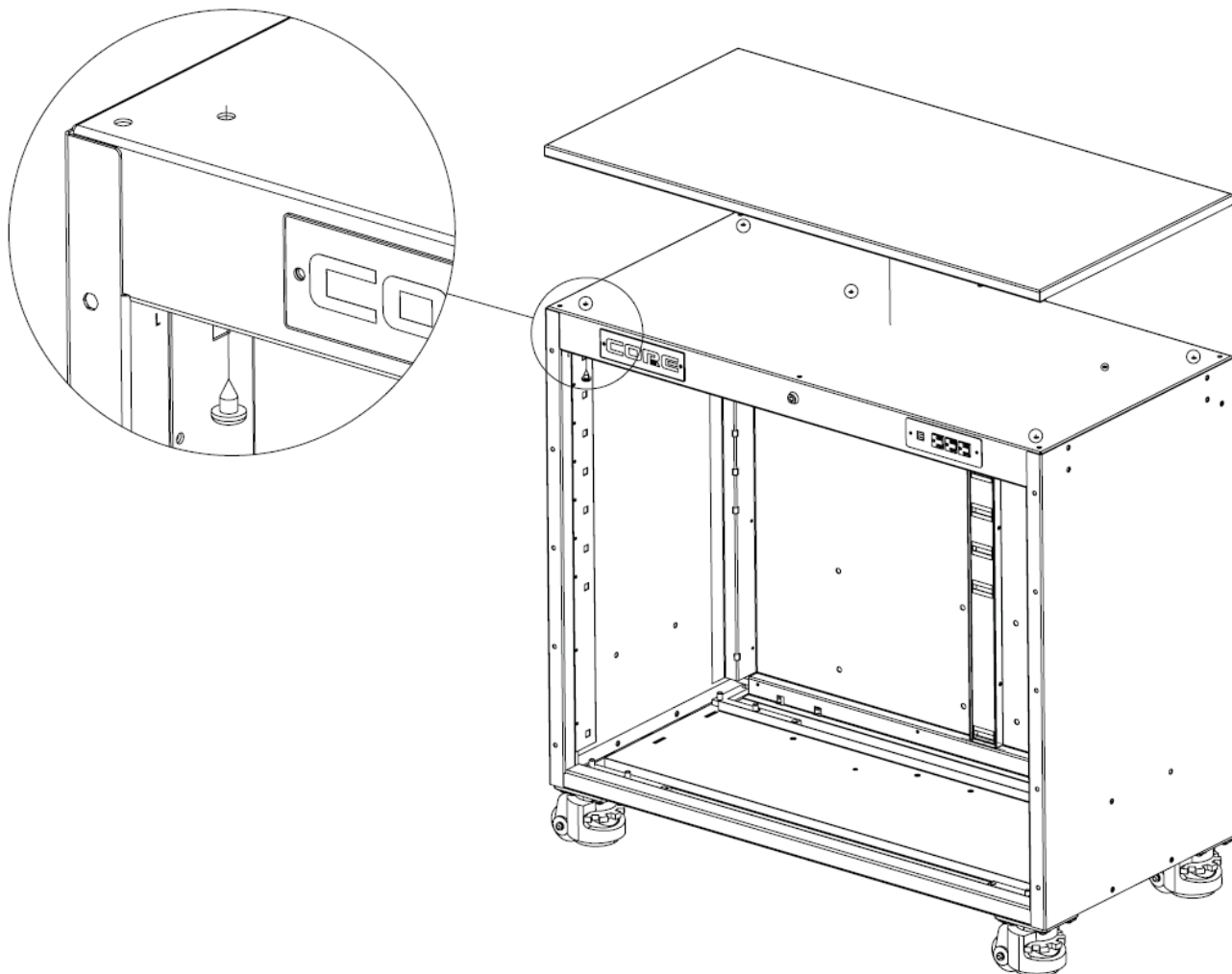
Install base plates

Install the 2 base plates on the inside of locker modules at the bottom (hides the interior hardware) should set into place without hardware.



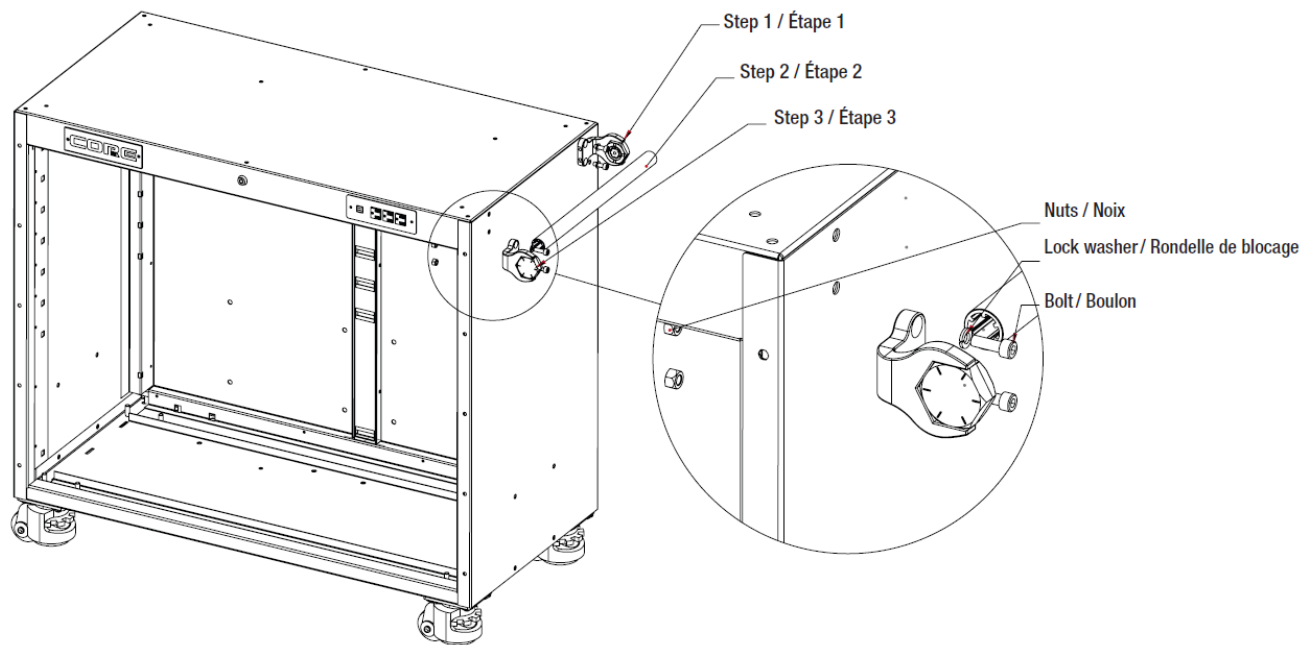
Install work surfaces

- For Maple wood or stainless steel work surfaces, use the provided hardware in all 4 corners to install.
- Rubber mat does not need to be screwed in, push the 4 corners down to secure.



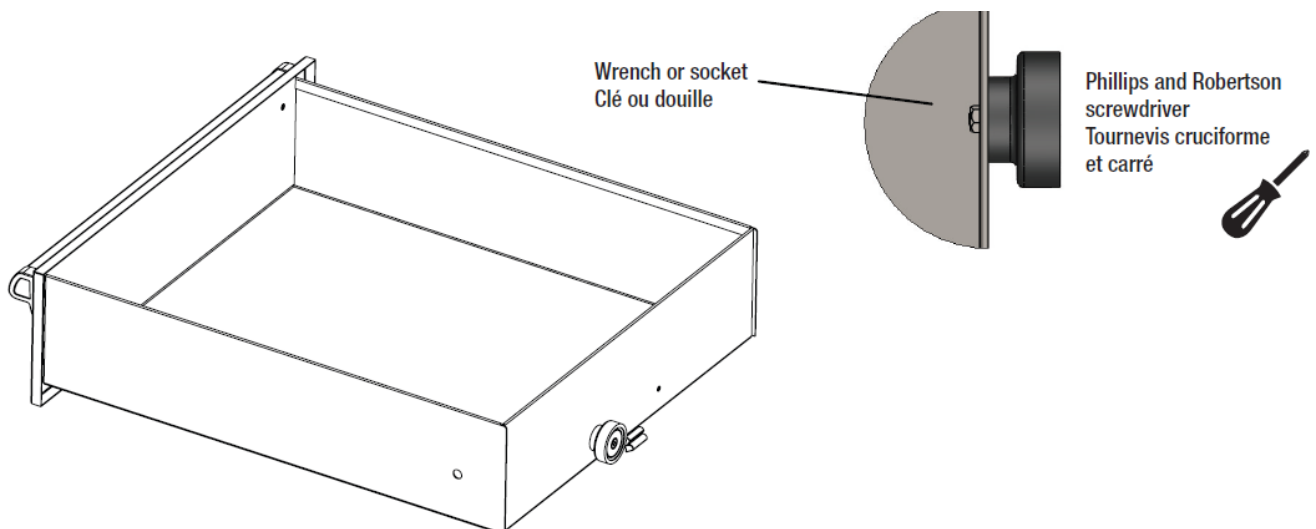
Install side push handles with the provided hardware.

- First, mount one of the brackets with the provided hardware
- Second, align the push rod inner teeth with mounting bracket.
- Third, align the mounting bracket with the rod and mount it with provided hardware.



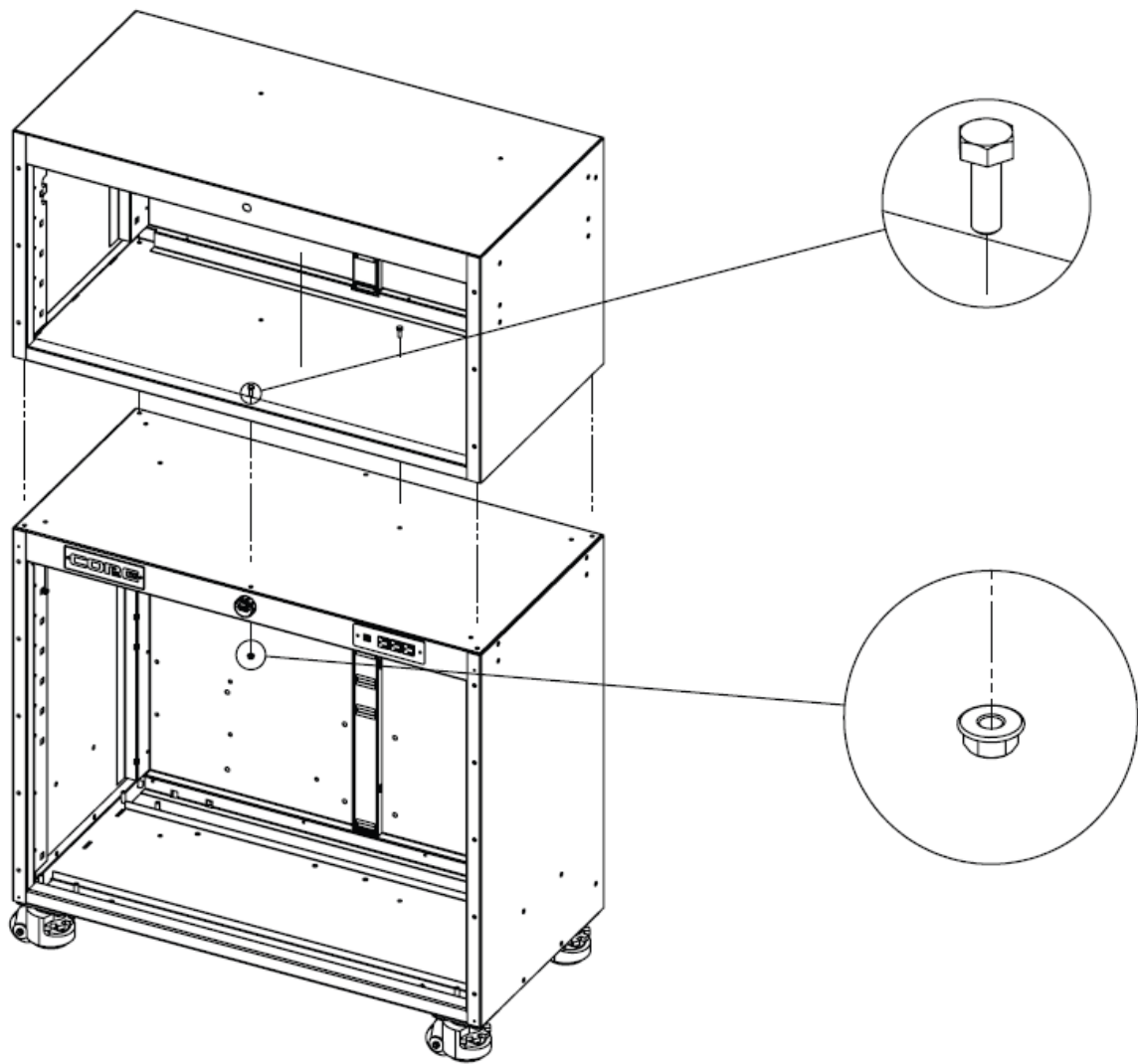
Adjust the magnets strength on the drawers

- Take off the drawer
- Use screw driver and wrench by considering tightening the screw reduce the magnet force.



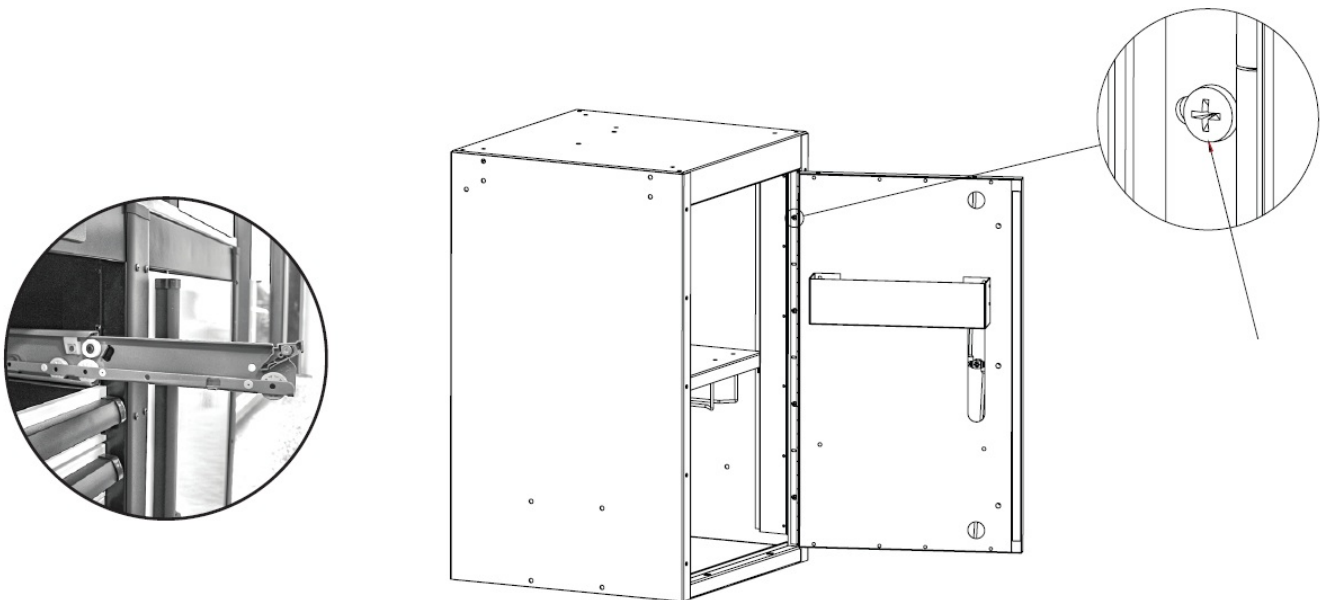
TOP BOX INSTALL

- Place the Top Box on top of the Main Box. Align the sides, as well as the front and back edges of both boxes, as precisely as possible.
- Insert the six provided bolts through the matching holes and secure them by tightening the nuts from inside the Main Box.



Reinstall your drawers and doors

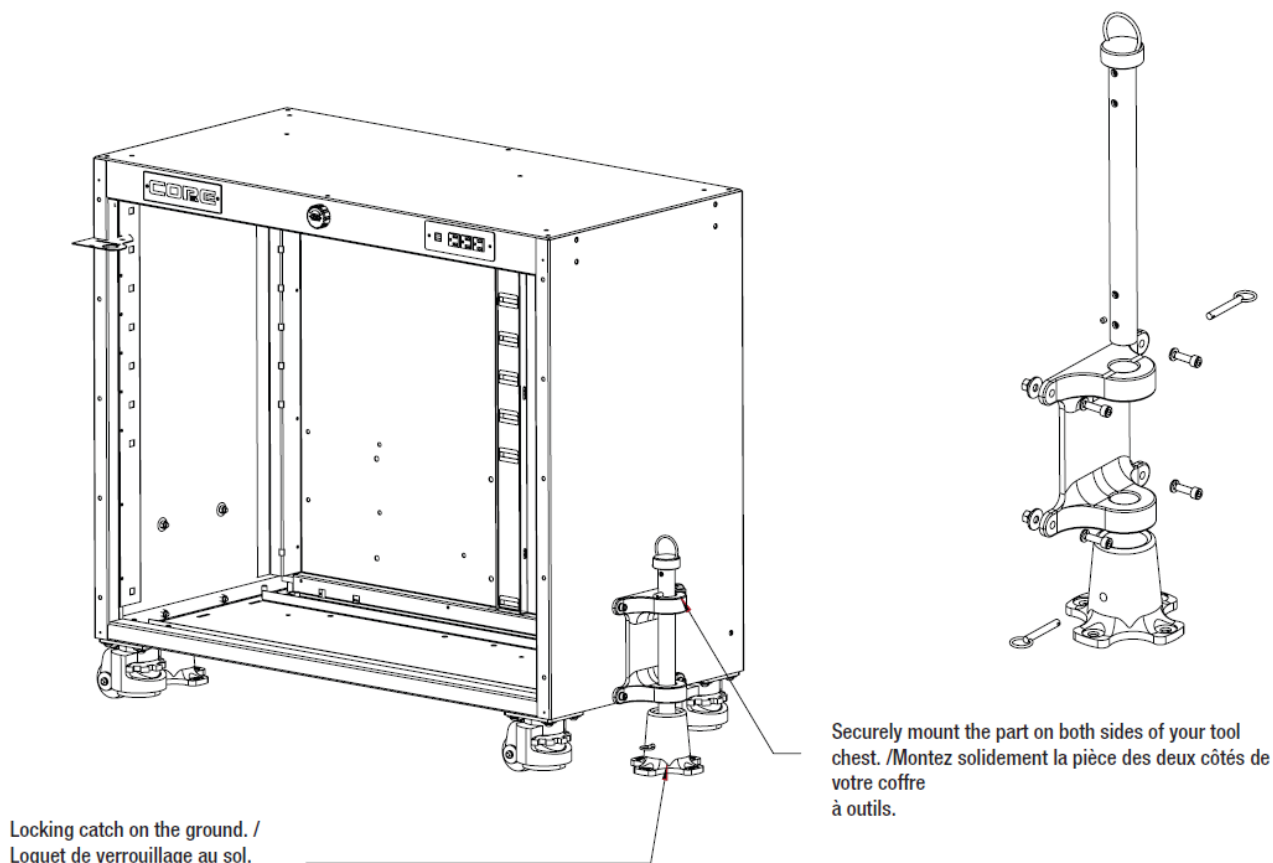
- This should be the very last step, if you have a tall 22" drawer module, make sure to re-install the laptop drawer first.
- Refer to step 1 to reinstall drawers.



Open all the screws to be able to remove the door.

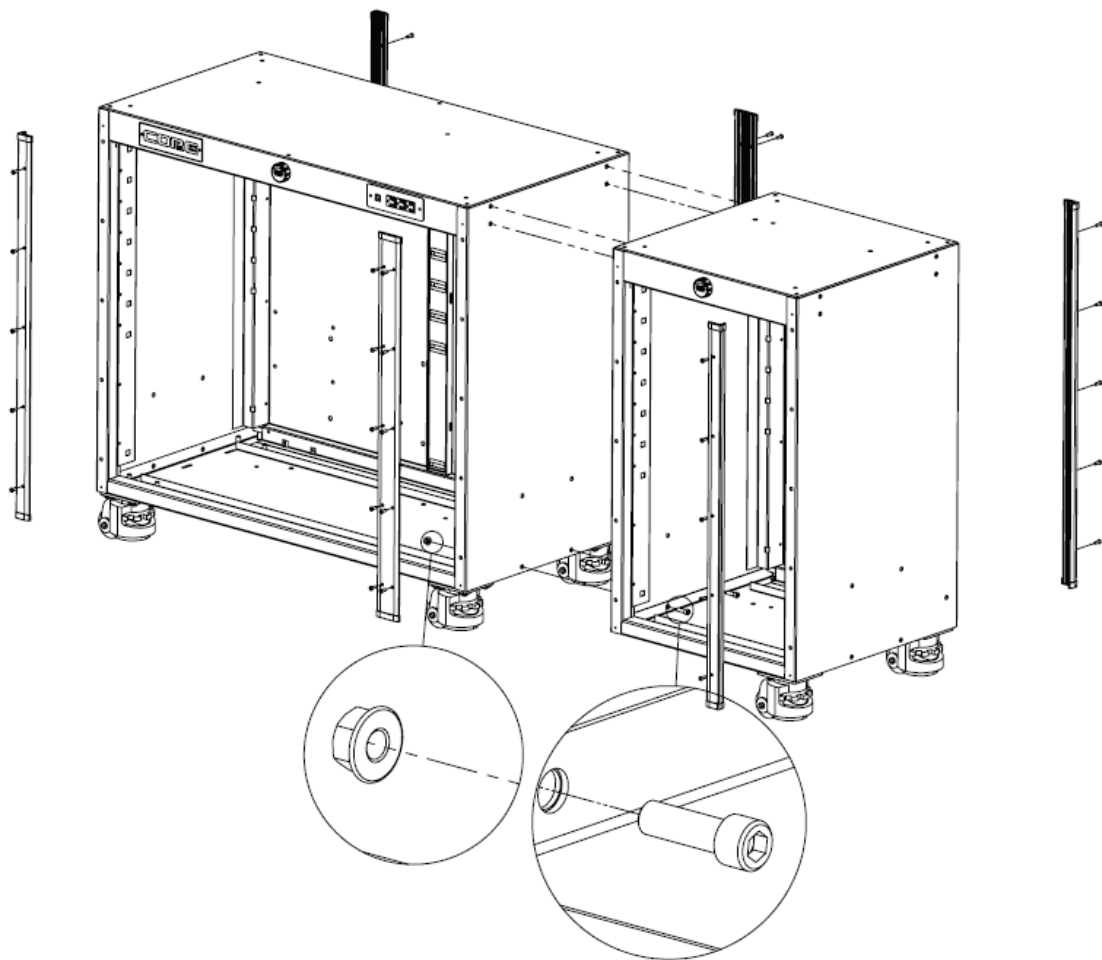
Trailer lock option

- Position your tool chest in the desired location within your trailer and securely lock the wheels to prevent movement. Place the locking catch on the ground and fasten it using the appropriate screws.
- Using the provided hardware, securely mount the part on both sides of your tool chest.



BUMPERS

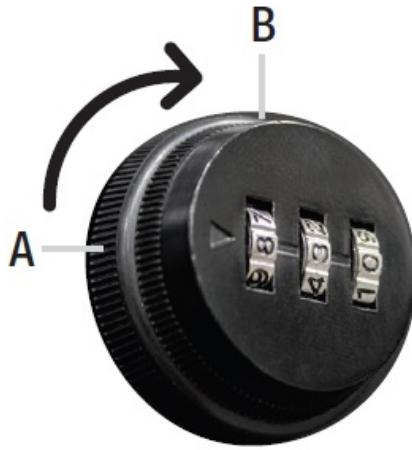
- Align the aluminum bumper with the rivet nut located at the corner of the cabinet.
- Use the provided screws to securely attach the bumper to the cabinet.



How to Set Your Personal Code

Even if the dials show different numbers, the factory default code is set to 0-0-0.

- Set the dials to the factory default code: 0-0-0.
- Turn the lock from position “A” (locked) to “B” (open) 90 degrees clockwise.
- While in the open position, press the reset button using a pointed object (like a pin), and set your desired code by rotating the dials.
- Release the pin and return the lock to its original position to complete the code setting.



Warranty

PROSLAT TOOLBOXES LIMITED WARRANTY

This document details the Proslat Limited Warranty for all new toolboxes purchased anywhere in North America. This Limited Warranty extends only to the first retail purchaser of the cabinet. Proslat warrants its toolboxes against defects in material or workmanship for a period of five (5) years from the date of purchase. Proslat will replace any defective cabinet as long as it was installed and maintained according to the printed instructions. Any Proslat toolboxes replaced under the terms of the Limited Warranty inherits the remaining warranty period from the original purchase. Proslat toolboxes are backed by the best warranty in the industry. All slides and hinges come with a lifetime warranty.

EXCLUSIONS. THE PROSLAT LIMITED WARRANTY DOES NOT COVER THE FOLLOWING:

- Damage that results from improper installation or misuse or abuse;
- Corrosion due to humidity
- Damage due to acts of God, or accident;
- Damage that results from overloading cabinet;
- Surface damage that results from chemical interaction;
- The cost of labor or accessory materials; and
- Shipping cost to return defective products.

LIMITATIONS OF WARRANTY

The above Limited Warranty is the exclusive warranty for Proslat toolboxes. Proslat disclaims all other warranties, express or implied, including any implied warranties or merchantability, fitness for particular purpose or otherwise. If you live in an area where consumer law prohibits this disclaimer, the above Limited Warranty will not extend the time period of any such implied warranty.

USE AND CARE


- Indoor use only.
- Keep on a levelled surface.
- Respect weight capacities found in the instruction booklet.
- Check all the screws and nuts periodically for tightness. Tighten when necessary.
- Periodically clean the surfaces with a soft rag and water.

OBTAINING LIMITED WARRANTY SERVICE :

Call toll free in Canada and USA: 1-[888-691-2944](tel:888-691-2944) or email info@proslat.com. You will need your original proof of purchase and photos to illustrate the claimed defect.

FAQ

Documents / Resources

	<p>PROSLAT SLPACK14 Core Toolboxes [pdf] User Guide</p> <p>SLPACK14, SLPACK15, SLPACK16, SLPACK17, SLPACK18, SLPACK19, SLPACK14 Core Toolboxes, SLPACK14, SLPACK14 Core Toolboxes, Core Toolboxes, Toolboxes</p>
---	--

References

- [User Manual](#)

Leave a comment

Your email address will not be published. Required fields are marked *

Comment *

Name

Email

Website

☐ Save my name, email, and website in this browser for the next time I comment.

Post Comment

Search:

Search

[Manuals+](#) | [Upload](#) | [Deep Search](#) | [Privacy Policy](#) | [@manuals.plus](#) | [YouTube](#)

This website is an independent publication and is neither affiliated with nor endorsed by any of the trademark owners. The "Bluetooth®" word mark and logos are registered trademarks owned by Bluetooth SIG, Inc. The "Wi-Fi®" word mark and logos are registered trademarks owned by the Wi-Fi Alliance. Any use of these marks on this website does not imply any affiliation with or endorsement.