



ProOne FS10 Under Counter Water Filter System Installation Guide

[Home](#) » [ProOne](#) » ProOne FS10 Under Counter Water Filter System Installation Guide 

ProOne®

W A T E R F I L T E R S

INLINE CONNECT FS10

Under Counter Water Filter System with ProMax™ FULL SPECTRUM™ Filter Technology Installation & Use Instructions



Contents

- 1 STANDARD INLINE SYSTEM
- 2 HOUSING PREPARATION:
- 3 OPTIONAL SEPARATE FAUCET KIT
- 4 Documents / Resources
 - 4.1 References
- 5 Related Posts

STANDARD INLINE SYSTEM

Package Contents

Filter housing, 2-3/4" port x 3/8" brass (lead-free) compression fittings installed in the housing, mounting bracket attached to the housing, ProMax™ FULL SPECTRUM™ filter cartridge installed in the housing, 30" x 3/8" compression fitting flex hose and filter cartridge replacement wrench

Tools and Hardware Required

Adjustable wrench, screwdriver, Teflon tape, 4 – screws for mounting bracket to the cabinet, 1/2" drill bit when using the optional faucet

System Specifications

- Overall height from the bottom of the housing to top of the bracket is 18.5". Diameter is 7.25"
- Type of installation: Under counter – Inline or with optional separate faucet – for cold water use ONLY
- Space Requirement: The system requires a minimum of 2" below sump(housing) for filter replacement

- Maximum Working Pressure: 860 KPA (125 psig)

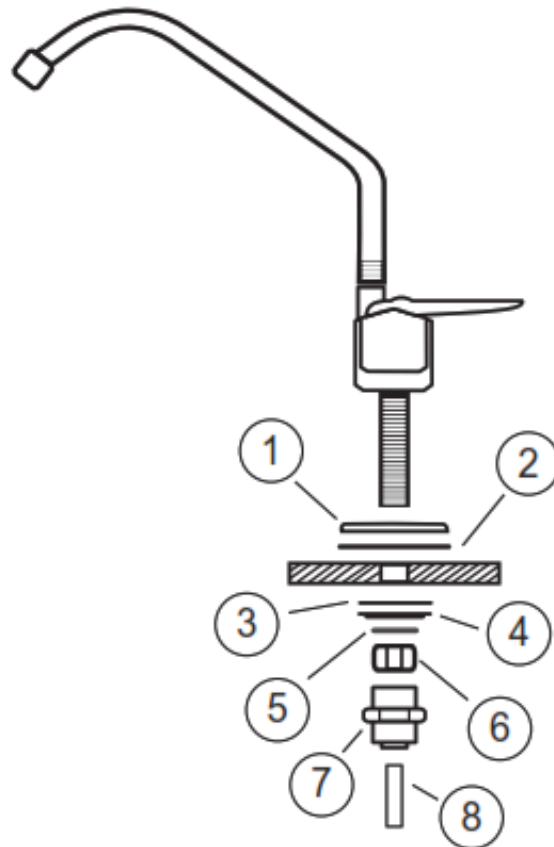
NOTE: Should your water pressure exceed 80 PSIG, install a pressure-reducing valve before installing the system

- Minimum Working Pressure: 137 KPA (20 psig)
- Minimum Working Temperature: 5° C (41° F)
- Maximum Working Temperature: 38° C (100° F)
- Recommended Flow Rate: 0.2 – 1.0 GPM
- Contaminant Reduction: Refer to Lab Reports
- Filter Life Expectancy: Up to 1 year with inline installation and up to 2 years with separate faucet installation
- Replacement filter: PM-FS10-RF

HOUSING PREPARATION:

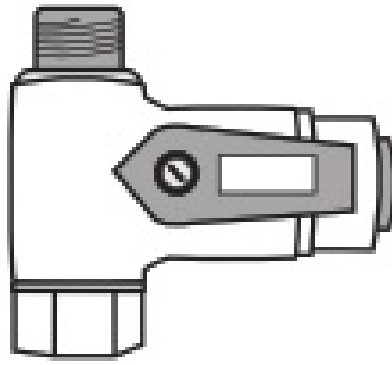
BEST TO WASH THE INSIDE OF THE FILTER HOUSING INCLUDING THE HEAD AND SUMP ONLY (NOT THE FILTER) WITH LIQUID DISHWASHING SOAP USING A STANDARD SPONGE OR DISHWASHING CLOTH BEFORE INSTALLATION. LUKE WARM WATER. RINSE WELL, AND WIPE DRY.

updated 5/5/2022



1. Face Plate
2. Large Rubber Washer
3. Small Rubber Washer
4. Plastic Washer
5. Star washer
6. Steel nut
7. Quick connect fitting
8. 3/8" tubing

OPTIONAL SEPARATE FAUCET KIT



T-Valve optional. Shown in the OPEN position

Designed to fit under the sink or in the basement. Do NOT install where the temperature could fall below freezing as damage could result. No power is required. For use with cold potable water only. READ COMPLETELY BEFORE INSTALLING OR USING.



CAUTION: Before beginning the installation, turn OFF the cold water supply under your sink or your house supply at the meter. Open the cold water faucet to release any water pressure.



WARNING: Do not use a water source that is microbiologically unsafe or of unknown quality without adequate disinfection before or after the system. For specific health requirements, consult your healthcare professional. Check and comply with any installation state or local codes that may apply.

SHOULD YOU HAVE QUESTIONS ABOUT INSTALLING YOUR PROPANE SYSTEM, PLEASE CONTACT TECHNICAL SUPPORT AT 800-544-3533 X27 OR EMAIL SUPPORT@PROONEUSA.COM FOR ASSISTANCE.

1.0 Standard Inline Installation

Install Filter Housing – see diagram A on page 3

1. Select a suitable location for the filter housing under the sink.

NOTE: The location should be reasonably accessible for filter replacement. When mounting housing to the cabinet, leave a minimum 2" space below sump/filter housing for removal of the sump for maintenance and filter replacement and orientate to match the desired flow direction.

DO NOT INSTALL where temperatures fall below freezing as damage to the system will occur.

NOTE: The flow arrow and IN/OUT are embossed on the top of the black plastic housing head. DO NOT reverse.

NOTE: The filter cartridge is pre-installed at the factory.

WARNING: Be sure to turn off your water supply or manual shut-off valve for your cold water before proceeding with the installation. If your plumbing does not include an annual shut-off valve at the sink, we recommend one be installed before proceeding.

2. Secure the bracket attached to the filter housing assembly to the side of the sink cabinet in the desired location. Depending on your installation, use appropriate fasteners not supplied with your system. Be sure to securely mount the housing using the 4 mounting holes as it will be heavy when full of water.
3. Remove the existing flex hose connection at the cold water shut-off valve and attach it to the OUT side of your filter. Filter housing requires a 3/8" compression fitting on the end of your existing flex hose.

4. Using the flex hose included with your system, attach one end to the IN side of the filter housing and the other end to the manual shut-off valve. The flex hose requires a 3/8" compression fitting.

MAKE SURE FITTINGS ARE TIGHTENED SECURELY. DO NOT OVER-TIGHTENED. GO TO STEP 3.0 – START-UP to complete the installation.

2.0 Inline Installation With Separate Faucet (Optional Kit) – See diagram B on page 3 for Optional Faucet. Begin installation by following steps 1 & 2 in section 1.0 above. Then continue with 2.0 below.

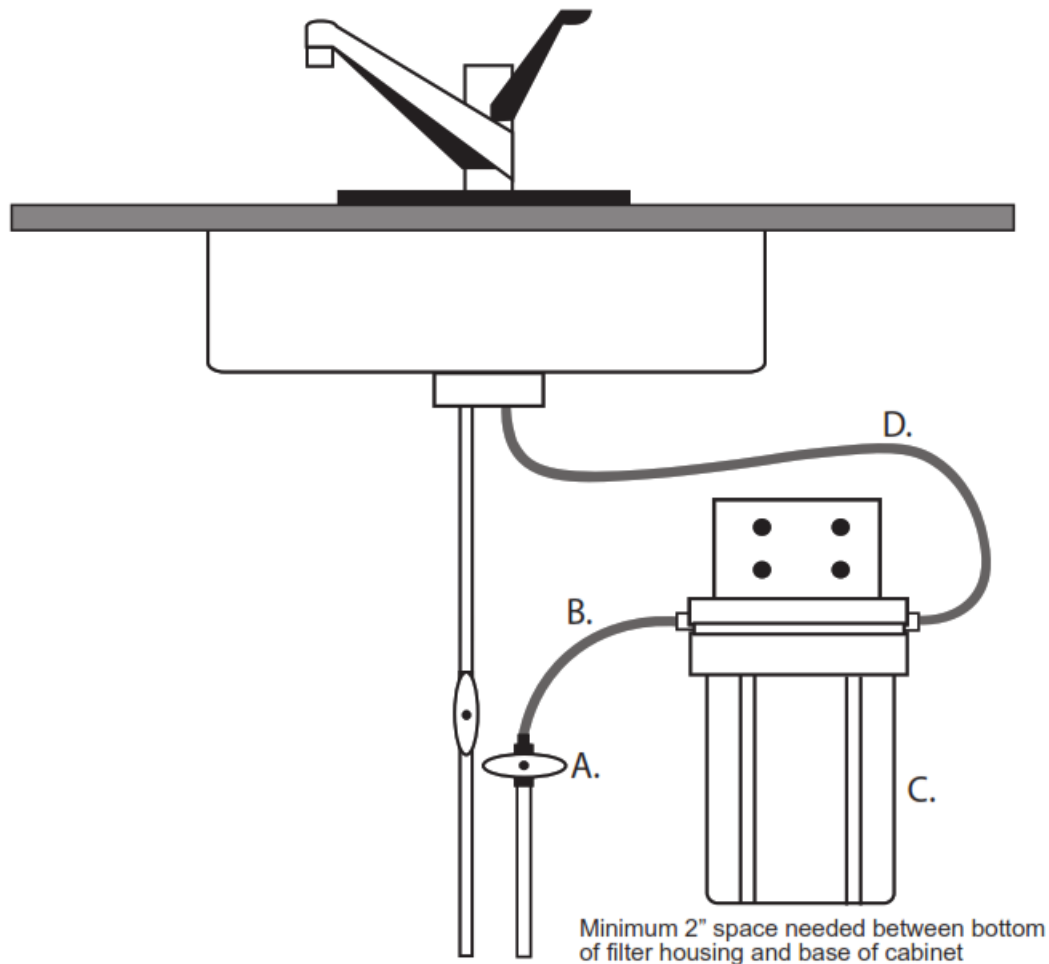
1. Disconnect the existing flex hose connected to your manual cold water shut-off valve or cold water supply.
2. Install the T-valve as shown in Diagram B on page 3. Requires 3/8" compression fitting size.
3. Re-connect the existing flex hose to the outflow side of the T-valve. Another end should remain connected to the existing faucet.
4. Prepare a piece of 3/8" plastic tubing (included) to fit between the quick connect push fitting on the T-valve and the IN side on the water filter housing – ADD an additional 1-1/2" to tubing length as tubing will travel about 3/4" into each fitting to seat properly.
5. Insert one end of plastic tubing into the quick connect on the T-valve – press in firmly.
6. With another end of the tubing, remove the nut and compression washer from the filter housing. Slide nut first onto the tubing, then slide compression washer onto the tubing. Insert tubing firmly into brass fitting (lead-free) on housing. Slide compression washer and nut onto threads and begin to tighten the nut using a wrench. Tighten securely. DO NOT over-tighten.
7. Select a suitable location for the drinking water faucet as close to the sink as possible allowing convenient space under the sink for assembly. The spout of the faucet should be able to reach the sink. A 2" flat area is required to mount the faucet. Check for clearance, then drill the sink top with a 1/2" bit to accommodate the faucet inlet pipe.
8. See Optional Faucet details and diagram on page 1 for installation on the faucet through the sink top.
9. Remove the plastic quick connect adaptor, the brass nut, and the lock washer from the inlet pipe.
10. Insert the faucet stem through the sink top to seat the rubber washer.
11. Replace the lock washer and brass nut and tighten firmly with a wrench.
12. Attach the plastic quick connect to the threaded stem of the faucet using Teflon tape (not supplied)
13. Prepare a piece of 3/8" plastic tubing (included) to fit between the quick connect push fitting on the faucet and the OUT side on the water filter housing – ADD an additional 1-1/2" to tubing length as tubing will travel about 3/4" into each fitting to seat properly. Insert the end of plastic tubing into the quick connect push-in fitting on the faucet. Press firmly.
14. With another end of the tubing, remove the nut and compression washer from the filter housing. Slide nut first onto the tubing, then slide compression washer onto the tubing. Insert tubing firmly into brass fitting (lead-free) on housing. Slide compression washer and nut onto threads and begin to tighten the nut using a wrench. Tighten securely. DO NOT over-tighten.
GO TO STEP 3.0 – START-UP to complete the installation.

START-UP

1. Slowly turn on your water supply or manual shut-off valve.
2. Check for leaks before proceeding

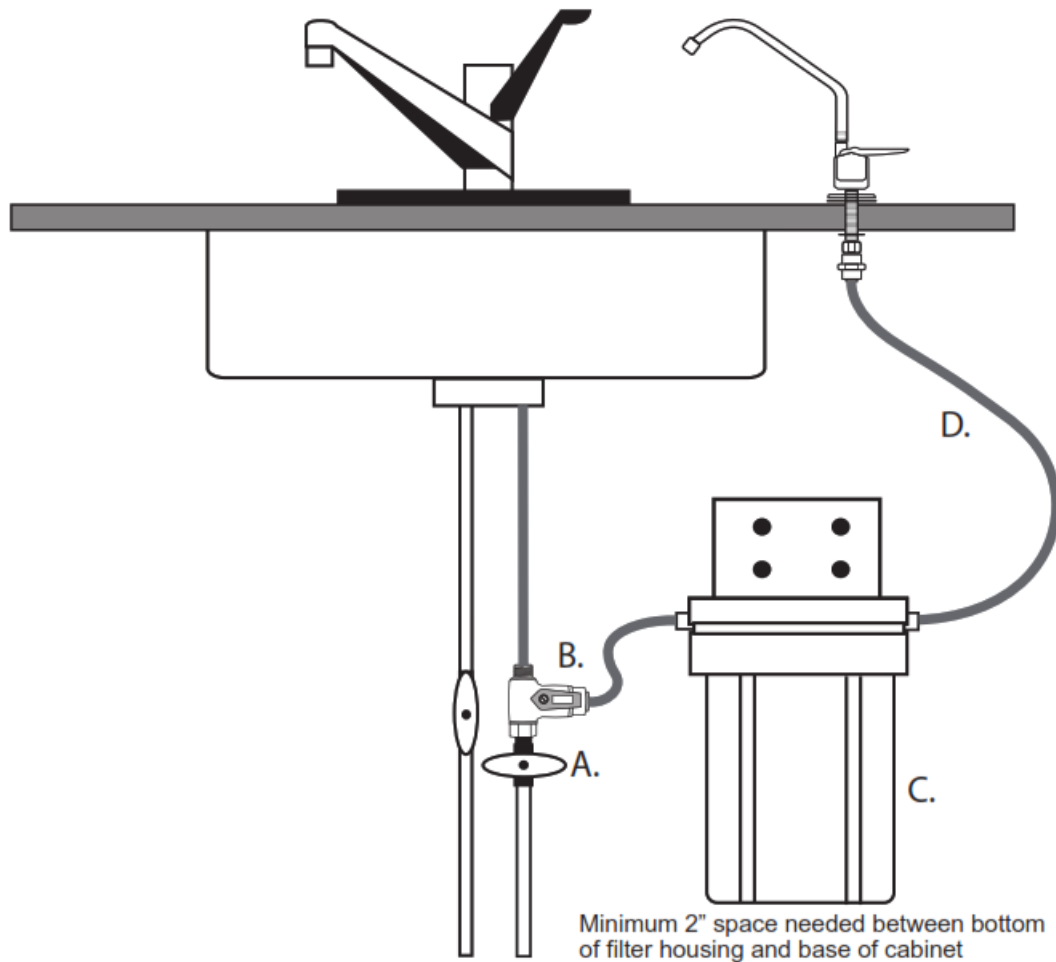
3. Press the RED button on top of the black housing head to allow trapped air out of the system.
4. Slowly turn on your cold water faucet.
5. Water should start flowing out of the faucet.
6. Allow water to flow for a few minutes to flush out the system before using the water. Some residual particles may be expelled during this flushing process. This is normal.
7. Your system is now ready for use.

DIAGRAM A



- A. Existing manual cold water shut-off valve. If there's not an existing valve, we recommend one be installed.
- B. Braided flex hose with 3/8" compression fittings (included) attaches to IN side on housing and outflow of the manual shut-off valve
- C. Filter housing/sump
- D. Existing braided flex hose attaches to OUT on the filter housing and cold water faucet
- YOUR INSTALLATION MAY REQUIRE ADDITIONAL HARDWARE NOT INCLUDED WITH THE SYSTEM.

DIAGRAM B



- A. Manual cold water shut-off valve. If there's not an existing valve, we recommend one be installed.
- B. Shutoff T-valve for filter system 3/8" male and female compression fitting with 3/8" quick connect for tubing. Handle shown in the OPEN position.
- C. Filter housing/sump
- D. Plastic tubing

YOUR INSTALLATION MAY REQUIRE ADDITIONAL HARDWARE NOT INCLUDED WITH THE SYSTEM.

3.0 How To Replace The FS-10 Filter Cartridge

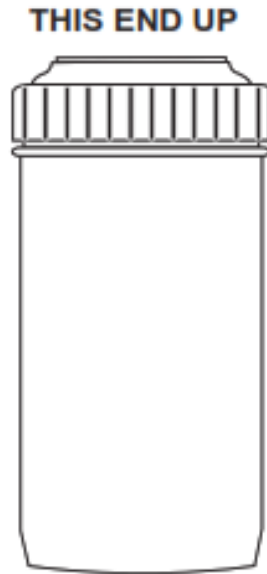


WARNING: Water pressure must be released prior to unscrewing the sump.

1. Turn off the water supply or manual water shut-off valve. Turn on the faucet to release water and pressure.
2. Press the RED button on top of the black housing head to release any remaining pressure in the filter housing.
3. Using the supplied wrench ONLY, slowly unscrew the filter housing sump by turning counterclockwise until removed.
4. Drain water from filter housing/sump over sink and remove old filter cartridge by gently pulling it out from the housing and discarding. Make sure the inside of the sump is clean. OK to wash with warm, soapy water and rinse well.
5. Insert the new filter cartridge into the housing. Make sure the cartridge end with the washer is installed facing upward in the housing.
6. Lubricate the O-ring and sump threads with food-grade silicone grease.
7. Using the supplied wrench ONLY, screw housing/sump back onto filter head clockwise securely. Hand tightens, firmly, being careful not to cross-thread. DO NOT over-tighten.
8. Slowly turn on the water supply or manual water shut-off valve.
9. Open the cold water faucet downstream to release any air.

10. Turn off the faucet and press the RED button on top of the black housing head to allow any trapped air out of the system.
11. Slowly turn on your cold water faucet. Water should start flowing out of the faucet.
12. Check for any leaks.
13. Allow water to flow for a few minutes to flush out the system before using the water. Some residual particles may be expelled during this flushing process. This is normal.

Your system is now ready for use.



FAQ's

1. How do I know when to replace my filter cartridge? The actual life expectancy of your filter will vary depending on the specific chemistry and level of contaminants present in your water source. We recommend you replace your filter for up to 12 months for inline application and up to 18 months for separate faucet application. You may also consider replacing your filter should the following occur.
 - a. When the flow rate diminishes
 - b. When you notice a change in taste or odor
2. How to maintain your system
 - a. When changing the filter, we recommend you lubricate the O-ring and sump threads with food-grade silicone
 - b. We recommend you replace the filter housing every 5 years.

ProOne® LIMITED WARRANTY. Lincoln-Remi Group, LLC d/b/a ProOne® Water Filters("PO") sells its products with the intent that they are free from defects in materials and workmanship under normal use and care. PO provides a limited warranty to the original retail purchaser of ProOne® products ("Customer") of those ProOne® products described in this Limited Warranty when purchased from ProOne® or an authorized ProOne® dealer. PO will repair or replace any ProOne® product, at its sole discretion during the warranty period under the following conditions:


1. Product Name: FS10 Under Counter System
2. If during two (2) years following the purchase of a ProOne® FS10 filter system and one (1) year for the FS10 replacement filter cartridge excluding the filter media, PO will replace or repair any component in this system when found to be defective by ProOne® during the warranty period,

3. No warranty is given as to the service life or performance of any filter media or any filter element because the performance of ProOne® filters will vary with water conditions and water consumption. Customer is encouraged to visit the Lab Report Disclaimer under Terms and Conditions at www.prooneusa.com.
4. Any damage caused by misuse or abuse; accident; improper installation; dropped product; failure to follow recommended installation or provide recommended maintenance; transportation damage; neglect; environmental conditions; or any other conditions whatsoever that are beyond the control of PO are excluded from this warranty.
5. This express limited warranty is the sole and exclusive warranty.
6. ALL OTHER WARRANTIES, WHETHER EXPRESS OR IMPLIED, INCLUDING BUT NOT LIMITED TO, ANY IMPLIED WARRANTIES OF MERCHANTABILITY, FITNESS, OR FITNESS FOR ANY PARTICULAR PURPOSE OR ANY OTHER POTENTIAL OBLIGATION ON THE PART OF PO WITH RESPECT TO PRODUCTS SOLD BY PO ARE DISCLAIMED. EXCEPT FOR ANY EXPRESS WARRANTIES, ALL ProOne® PRODUCTS ARE SOLD "AS-IS". PO shall not be held liable for any incidental, consequential, or special damages of any sort whatsoever. The liability of PO is limited to the original retail purchaser and to the repair or replacement of defective components only during the Warranty Period. Labor charges incurred are not covered under this warranty. No refunds will be given at any time to anyone other than the original retail purchaser, except as provided in the refund policy of ProOne®. Please visit Refunds and Returns under Terms and conditions at www.prooneusa.com. The Customer is also encouraged to review the Lab Report Disclaimer under Terms and Conditions at www.prooneusa.com. The liability of PO terminates upon the expiration of the Warranty Period or transfer of product ownership.
7. To obtain warranty service on, or replacement of a ProOne® product, customers should contact ProOne® customer service by email at support@prooneusa.com to confirm eligibility for a warranty. Customer may be asked to send, at the sole expense of the Customer: (a) the product including its original packaging; and (b) the dated sales receipt as proof of purchase, and a prepaid return package, to the following address: ProOne, 1200 Benstein Rd, Commerce Twp., MI 48390. NO C.O.D's will be accepted.
8. This warranty provides you with specific legal rights. You may have additional rights which may vary from country to country. Because of individual country laws and regulations, some of the above limitations and exclusions may not apply to you. For any warranty questions, please call 1-800-544-3533 or email support@prooneusa.com.

Attention CA, IA, and WI Consumers. In compliance with states' law, ProOne products are sold and shipped to residents of these states without any health-related performance claims except for aesthetics including chlorine reduction and improvement with taste, odor, and sediment. Other states may apply.

© ProOne® Water Filters 2022. ALL RIGHTS RESERVED.

Documents / Resources

	ProOne FS10 Under Counter Water Filter System [pdf] Installation Guide FS10, Under Counter Water Filter System, FS10 Under Counter Water Filter System
---	---

References

-  [ProOne® | Gravity Water Filters, Filter Pitchers, Shower Filters](#)

Manuals+.