



PROMAX PROWATCH Neo 2 Advanced Remote Monitoring System User Guide

[Home](#) » [PROMAX](#) » PROMAX PROWATCH Neo 2 Advanced Remote Monitoring System User Guide 

Contents

- [1 PROMAX PROWATCH Neo 2 Advanced Remote Monitoring System](#)
- [2 Product Overview](#)
- [3 RECOMMENDED SETTINGS FOR MONITORING](#)
- [4 Documents / Resources](#)
 - [4.1 References](#)
- [5 Related Posts](#)

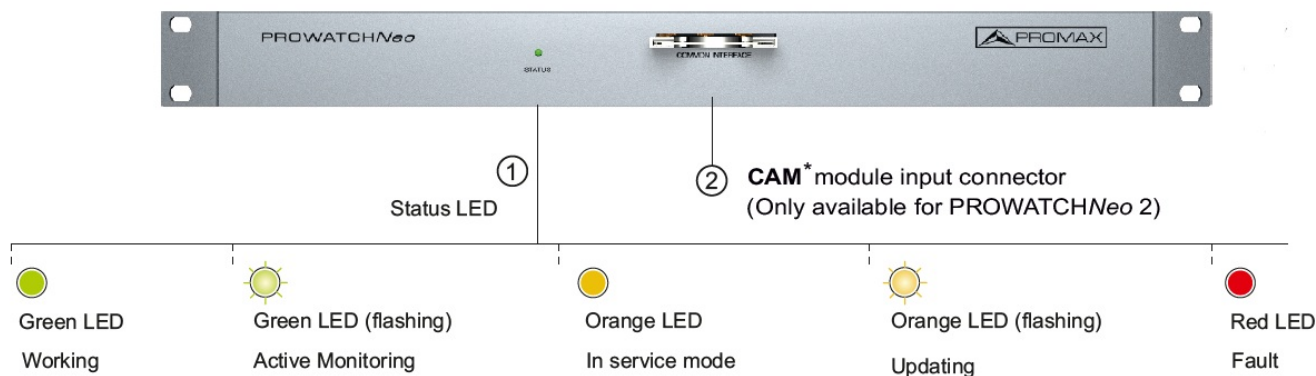


PROMAX PROWATCH Neo 2 Advanced Remote Monitoring System



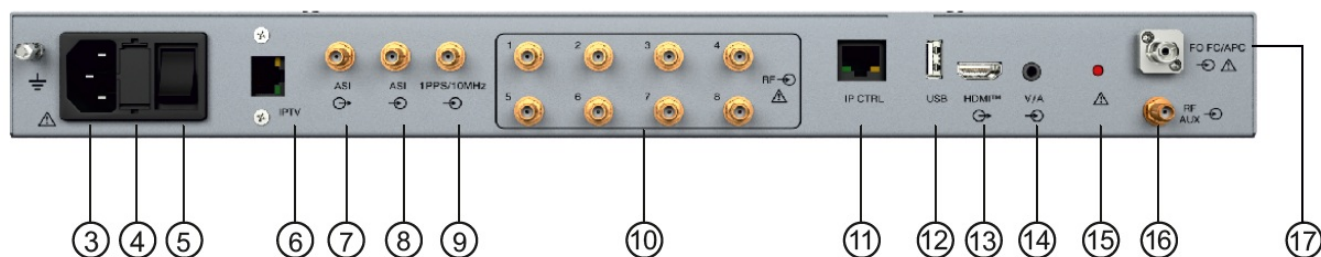
Product Overview

FRONT VIEW



1. Status LED
2. **CAM** module input connector
(Only available for PROWATCHNeo 2)

REAR VIEW



3. Power input connector
4. Fuses
5. Switch on-off button
6. IPTV Ethernet connector (only available for PROWATCHNeo 2)
7. ASI output (only available for PROWATCHNeo 2)
8. ASI input (only available for PROWATCHNeo 2)
9. External reference signal input 10 MHz (PROWATCHNeo 2 only)
10. RF signal input connectors (RF inputs depending on configuration)
11. ETHERNET connector for (NetUpdate / Streaming VA / WebControl**)
12. USB connector
13. HDMI output
14. Video / Audio input
15. Reset / Updates button
16. RF auxiliary input connector
17. FC/APC optical input connector (PROWATCH Neo 2 only)

Note: Some of the options shown in the images in this document may not match those on your equipment. See the attached instruction manual for more information.

LOAD DEFAULT CONFIGURATION

1. Update version to R29.9 or higher.
2. Prepare a TXT file with the name PROMAX_IP.txt and copy it to the root directory of a PENDRIVE.

Content
dhcp:off
10.0.6.60
255.255.255.0
10.0.6.1

← dhcp on/off
← IP
← Mask
← Gateway



USB
PROMAX_IP.txt

3. Set the equipment in SERVICE MODE



① Press + ② Switch on + ③ Drop

Orange Status LED (**SERVICE MODE**)

4.



Insert a PENDRIVE with the **PROMAX_IP.txt** file

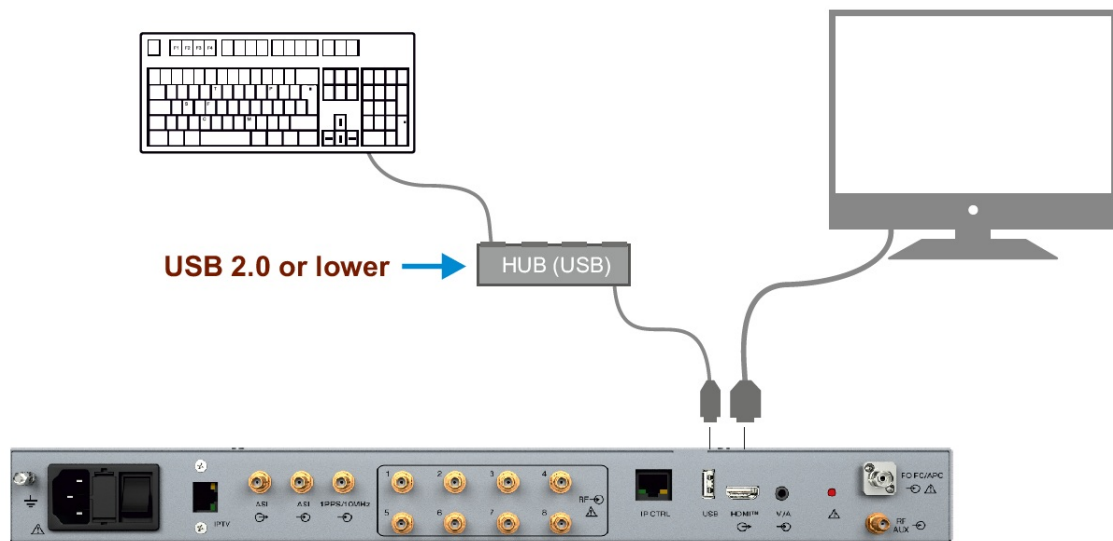
5.



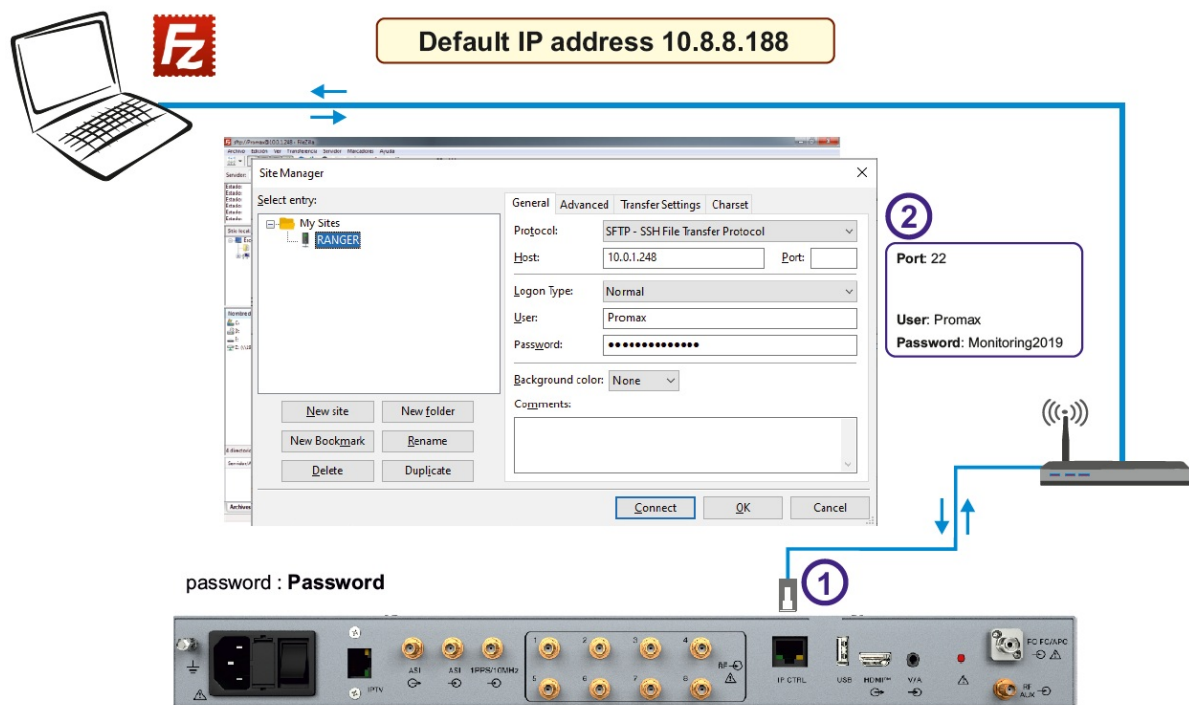
Press between 3 and 7 s to load the PROMAX_IP.txt file

6. The equipment restarts.

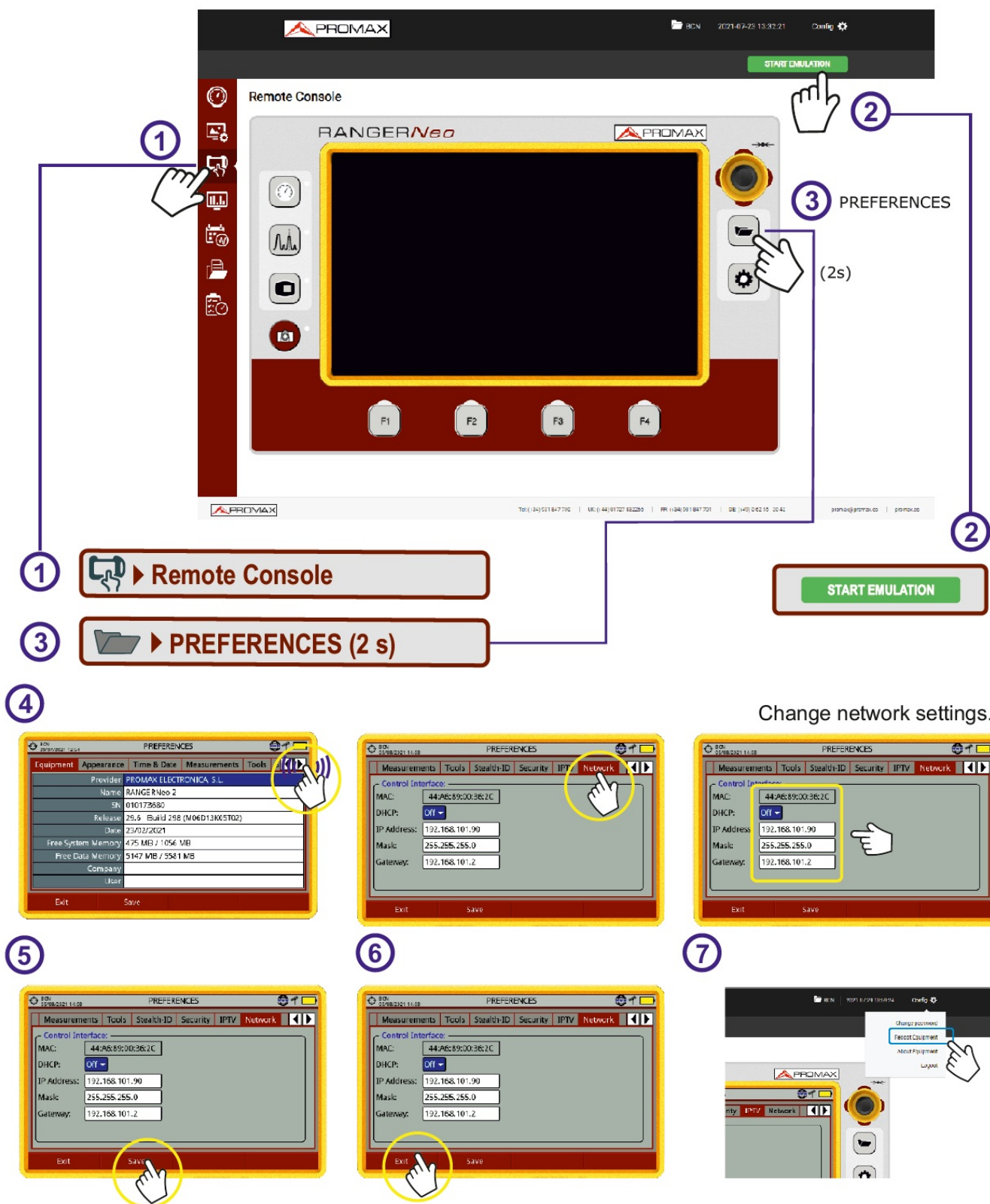
LOCAL MODE CONNECTION



SFTP ACCESS



CONNECTION IN REMOTE MODE AND ACCESS TO THE WEBCONTROL



WARNING! At the moment of pressing “Exit”, the communication will be lost because it will have a new IP.


RECOMMENDED SETTINGS FOR MONITORING

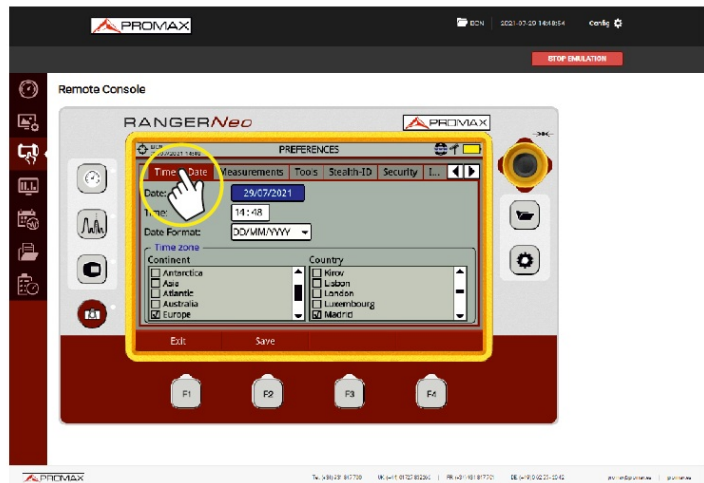
CAUTION: Once recommended parameters have been configured, be sure to press “Save” to ensure that settings do not lose in case of disconnection or shutdown.

TIME ZONE AND TIME CONFIGURATION

CAUTION: Before carrying out the monitoring, select the geographical zone where the equipment is. Ensure that

the equipment has time and date right. See figure below.

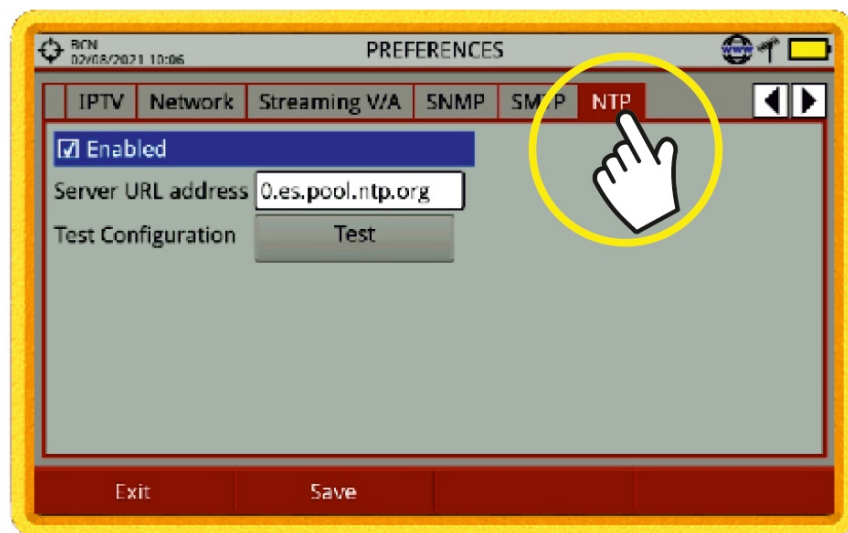
- ① 
- ②  **PREFERENCES (2s)**



NTP TIME SERVER SETTINGS

PREFERENCES (2s)

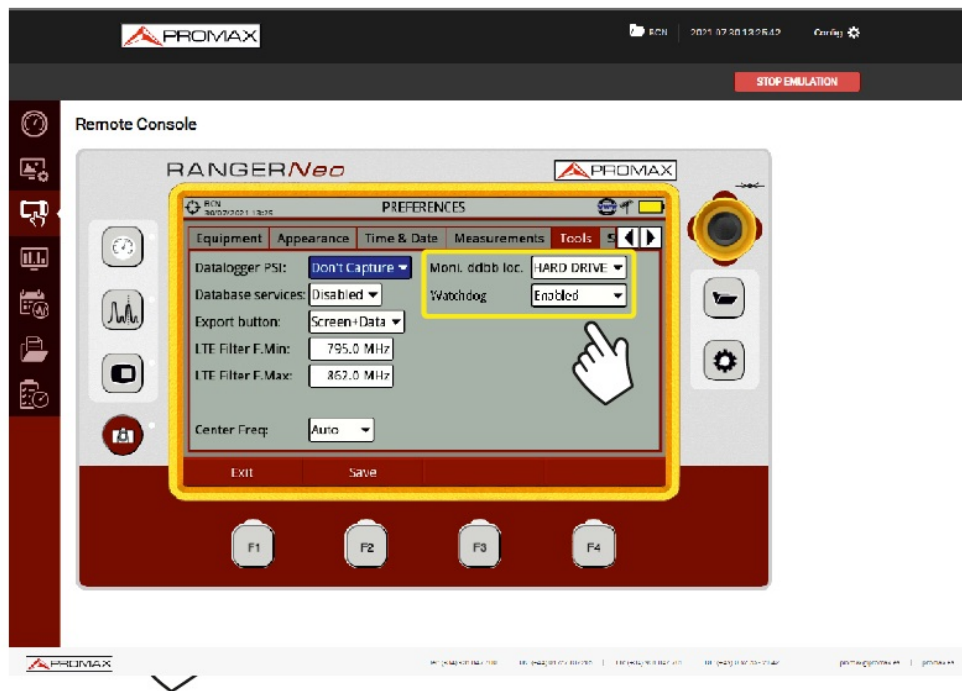
NTP Automatically adjusts the time if it's connected to the network.



TOOLS

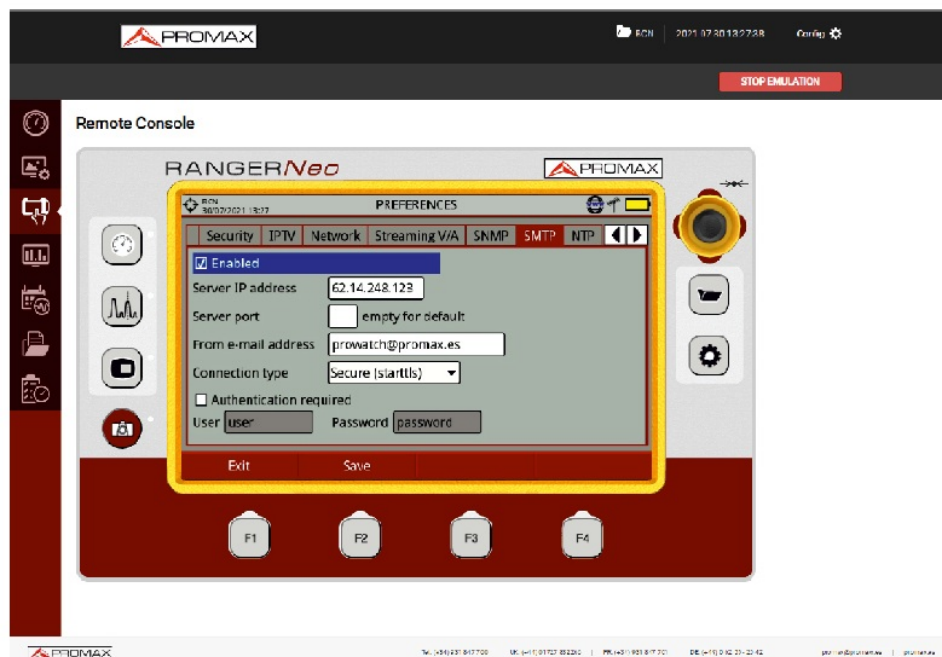
- Moni. ddbb loc. HARD DRIVE
- Watchdog Enabled

CAUTION: To do the Monitoring it is recommended to use the “HARD DRIVE” option instead of internal memory. And the watchdog option in “Enabled” mode.



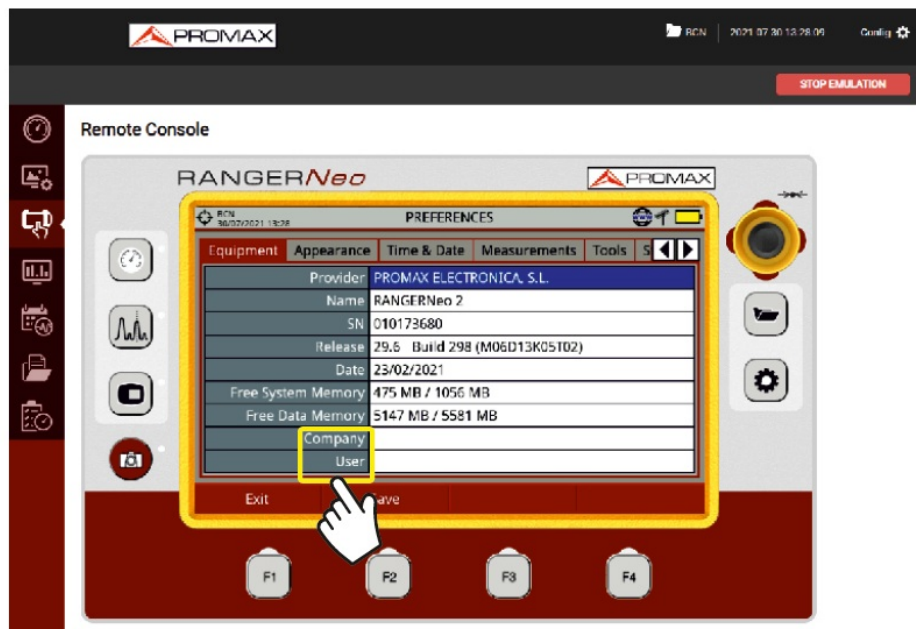
SMTP

Mail server settings for sending alarms.

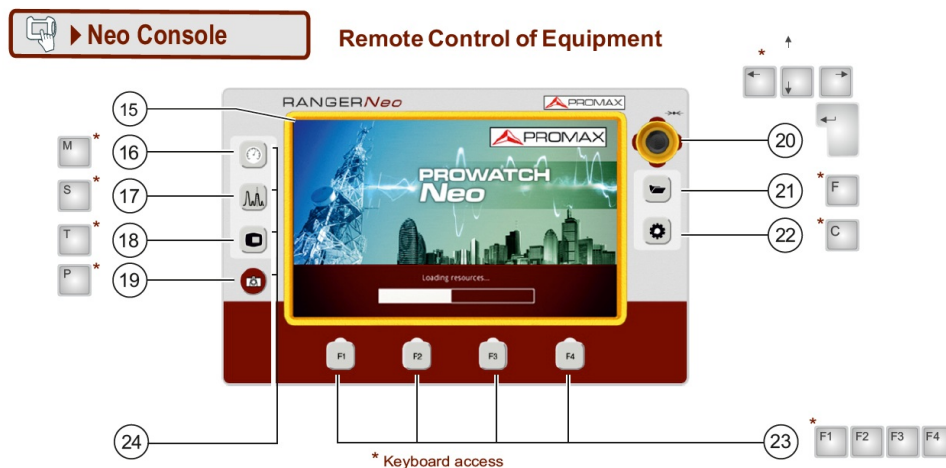


EQUIPMENT-Company-User

- **Company:** The company to which the alarms are sent.
- **User:** Person who the alarms are addressing.



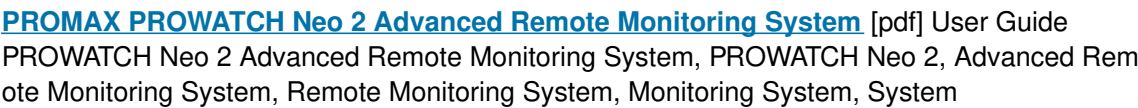
Neo Console



- (15) Screen
- (16) Measurement key
- (17) Spectrum key
- (18) TV key
- (19) Export (press >1s)/ Reference (press <1s)
- (20) Joystick
- (21) Installations management key
- (22) Settings key
- (23) Softkeys
- (24) Active Function Indicator

Find the user's manual on the download area at: www.promaxelectronics.com

Documents / Resources



References

-  PROMAX
- User Manual

[Manuals+](#), [Privacy Policy](#)

This website is an independent publication and is neither affiliated with nor endorsed by any of the trademark owners. The "Bluetooth®" word mark and logos are registered trademarks owned by Bluetooth SIG, Inc. The "Wi-Fi®" word mark and logos are registered trademarks owned by the Wi-Fi Alliance. Any use of these marks on this website does not imply any affiliation with or endorsement.