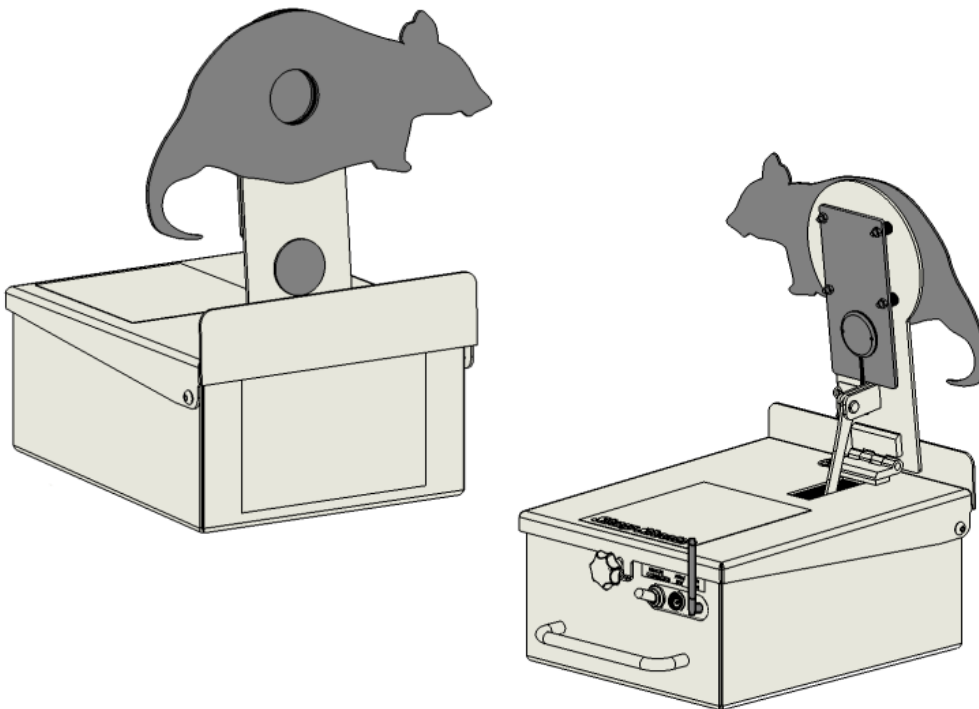


Promatic Sharp Shooter Instruction Manual

[Home](#) » [PROMATIC](#) » Promatic Sharp Shooter Instruction Manual 



Promatic Sharp Shooter Operating Instructions



Sharp Shooter targets can move automatically and suddenly, care must be exercised at all times to prevent accidents or injury.
The equipment should only be operated or used under the supervision of a competent and responsible person.



This document must be read in full before attempting to operate the equipment Please retain this information for future reference

Preface:

Every effort has been made to ensure that the information contained within this manual is complete, accurate, and up-to-date. Promatic International assumes no responsibility for errors beyond its control.

| | | |
|--|---|------------------------------------|
| | <p>12v DC Power Source:</p> <p>This equipment operates using an internal 12v battery, A plug-in charger is provided with each unit.</p> | |
| | <p>TO BE RECHARGED ONLY USING THE CHARGER PROVIDED.</p> <p>UNITS MUST NEVER BE DIRECTLY CONNECTED TO MAINS AC POWER. Batteries emit EXPLOSIVE GASES when charging.</p> <p>Charge the battery in a well-ventilated area well</p> | |
| | <p>It is recommended that the target units and clock are charged for 4-5 hours before first use.</p> <p>Recharge after prolonged periods of storage.</p> | |
| | <p>APPROPRIATE EYE PROTECTION MUST BE WORN WHEN INVOLVED IN ANY SHOOTING ACTIVITY</p> | <p>Eye protection must be worn</p> |

Battery Disposal information :



Do not dispose of used batteries or rechargeable batteries in household waste. Under the EU Battery directive consumers are required to take used batteries to appropriate collection sites, either the store where the batteries were purchased or wherever batteries are sold.

Never dispose of batteries in a fire. Batteries may explode or leak

Do not dispose of this product in household waste. End-of-life devices should be taken to a designated collection point for the disposal of electrical and electronic equipment.

Outside the UK or EU contact your local recycling facility for advice.



Contents

[1 Important Safety Instructions](#)

[2 Documents / Resources](#)

[2.1 References](#)

[3 Related Posts](#)

Important Safety Instructions

Sharp Shooter targets can move automatically and suddenly, care must be exercised at all times to prevent accidents or injury.

The equipment should only be operated or used under the supervision of a competent and responsible person.

- DO NOT switch on or activate the target (on /off switch) with the lid open.
- ALWAYS ensure that hands and fingers are kept away from all moving parts at all times.
- Stand the target(s) on solid ground, and position to allow free movement of the target arm. Targets can be mounted on their side if desired.
- ALWAYS ensure that each target is placed a minimum of 8 meters from the shooting position.
- Safety glasses should be used by all present whenever anyone is shooting.
- These targets are designed for use only with air guns having muzzle energy of 12ft. lb (16.2 J) or less. It is the user's responsibility to ensure that they comply with all local and national laws concerning the ownership, storage, handling, and use of airguns.
- Ensure a safe backstop/pellet drop-off area at all times.
- Always follow recommended safety procedures when using air guns.

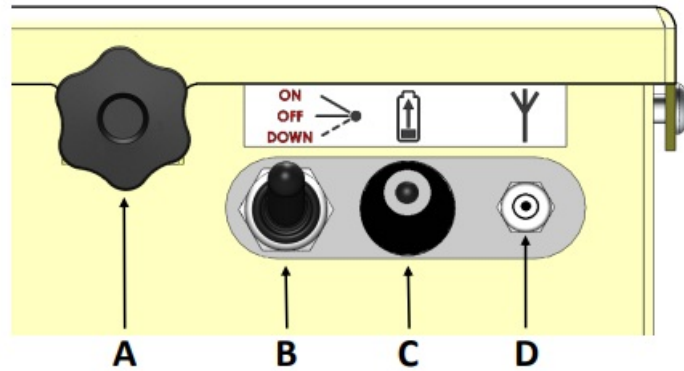


Note: The sharpshooter units and clock are not designed to be waterproof and should not be left out in the rain for extended periods.



Caution: Switch off the system when not in use to preserve battery life and prevent accidental operation which could cause nuisance or injury.

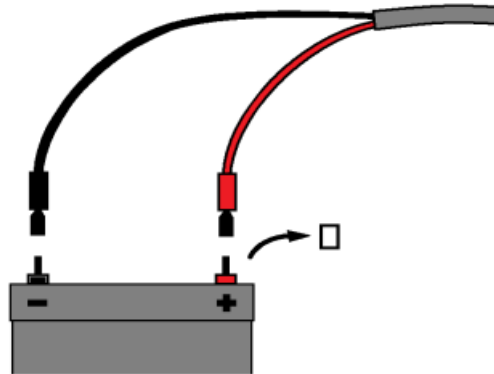
Target Controls:



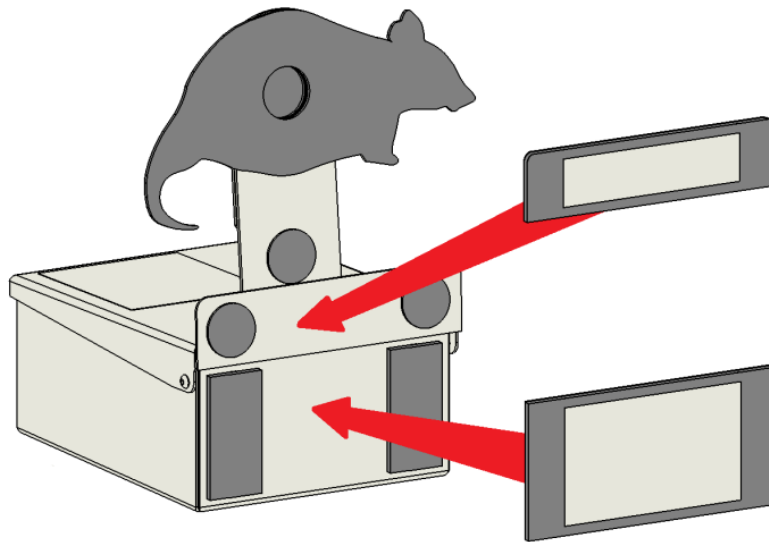
- A – Lid securing knob
- B – Off / On / Down switch
- C – Charger socket
- D – Antenna connection
(screw on if not already fitted)

Connecting the internal battery:

For safety reasons, the battery will have been disconnected for shipping.



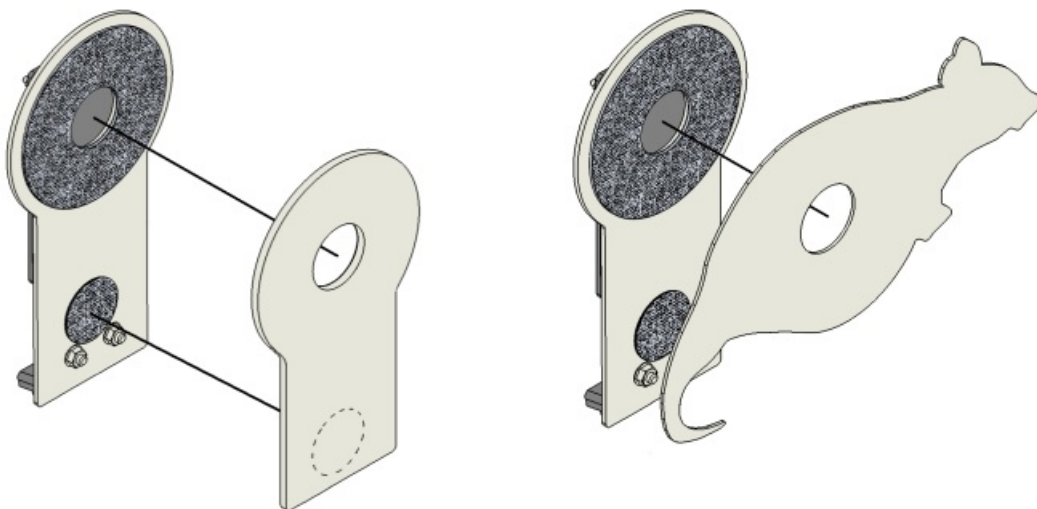
1. Plug a charger into the target via the charger socket on the front.
2. Plug the Charger into a suitable mains AC power outlet.
3. Press switch (B) up into the on the position this will lift the target, then switch it back to the center off position.
4. Disconnect the charger.
5. Unscrew the knob and open the lid.
6. Remove the protective caps from the battery terminal and fit the battery connecting leads to their respective terminals:
 Red lead to terminal marked + or colored Red
 Black lead to terminal marked – or colored Black
7. Ensure any battery retaining foam remains in place on top of the battery, and close and secure the lid.
8. Reconnect the charger and allow time for the battery to charge.
9. Repeat for all other targets.



Fit the protective and target plates:

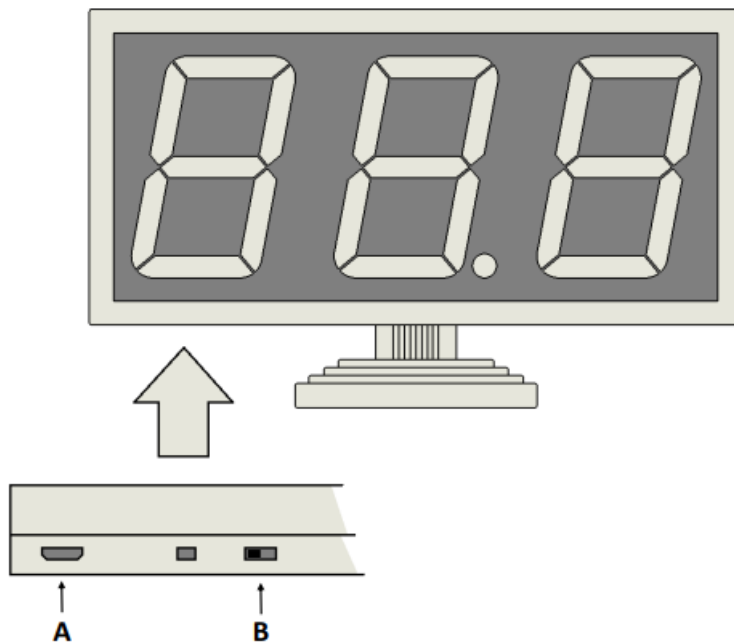
1. Install box front protector plates as shown.
2. Fit colored aim plate or animal plate as desired.

Note the aim plates can be obtained with a number of different center hole sizes to allow for increased levels of difficulty.



Clock Controls:

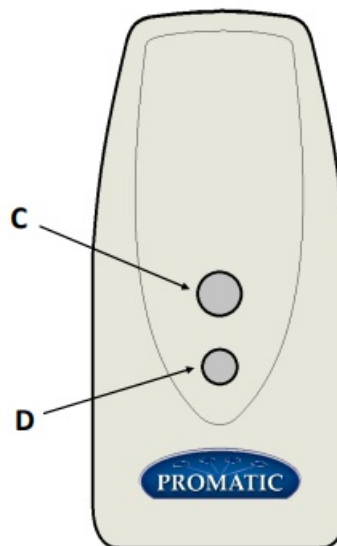
- A – Charger socket
B – On/Off switch



Remote Control:

C – Start Button

D – Target Park



Remote control of hidden Machinery:

Whenever setting up, changing batteries, or testing the radio remotely, it is likely that a target will move as a result, often in an out of sight location.

All targets that are likely to move should be either turned off or closely monitored to ensure that no person, working on or adjusting the target can become entrapped.

Setting up for Play:

If purchased as a set, your remote handset and targets will have been paired (matched to each other) at the factory and will work straight out of the box with no programming required.

Two of the target units will be marked with either Start or Stop or A or B on the pellet stop plate or the control panel. Position these units at the beginning and end of your planned game. The remaining units can be positioned as desired and shot in any order between the Start and Stop.

Playing the Game:

1. Switch on all individual targets then switches on the clock controller.
2. Press the START button on the remote to raise all the targets.
3. Shoot at the start target (marked Start or A) when this is hit the clock will start counting.
4. Shoot the intermediate targets at will (these do not affect the clock function)
5. Shoot at the end target (marked Stop or B) when this is hit the clock will stop counting and continue to display your shoot time.

To abort a game and restart:

1. Press the TARGET PARK button, this will halt the clock and send any remaining un-shot targets down.
2. Pressing the START button on the remote will reset the clock, raise all the targets and start a new game.

Shooting without the clock:

1. Switch on all individual targets.
2. Press the START button on the remote to raise all the targets.
3. Shoot at the targets in any order.
4. Press the START button again as required to raise all the targets.



Promatic International Ltd.

**Hooton Road
Hooton
South Wirral
CH66 7PA
United Kingdom**

Tel: +44 (0) 151 327 2220
E-mail info@promatic.co.uk
Website: www.promatic.co.uk

**Promatic Inc.
801, Mid America Drive,
Plattsburg.
MO 64477
USA**

Toll-Free: 888.767.2529
Fax: 816.539.0257

E-mail: sales@promatic.biz

Sharp Shooter Main 1.2 — April 2019

Documents / Resources

| | |
|--|---|
| | <p>PROMATIC Promatic Sharp Shooter [pdf] Instruction Manual</p> <p>Promatic Sharp Shooter</p> |
|--|---|

References

- [Promatic Trap Machines | World's Best Traps | Clay Target Thrower](#)
- [Promatic Traps— Promatic International Ltd](#)