

prolink PRO700SFC Super Fast Charging Line Interactive User Guide

[Home](#) » [PROLiNK](#) » prolink PRO700SFC Super Fast Charging Line Interactive User Guide 



User Guide

Line interactive UPS with **SUPER FAST**
charging speed

PROZOOSFC, PROZOOSFCU,
PRO851SFC, PRO851SFCU,
PRO1201SFC, PRO1201SFCU,
PRO1501SFC, PRO1501SFCU,
PRO2000SFC, PRO2000SFCU



Version 4.60

Tanda pendaftaran No: IMKG.1653.11.2021

Contents

- [1 Important Safety Warning](#)
- [2 Package Contents](#)
- [3 Overview](#)
- [4 Installation & Initial Startup](#)
- [5 Software Download & Installation](#)
- [6 Storage and Maintenance](#)
- [7 Troubleshooting](#)
- [8 Specifications](#)
- [9 Worldwide Customer Care Centers](#)
- [10 Documents / Resources](#)
- [11 Related Posts](#)

Important Safety Warning

CAUTION:

1. To prevent the risk of fire or electric shock, install in a temperature and humidity-controlled indoor area free of conductive contaminants. (See the specifications for the acceptable temperature and humidity range.)
2. To reduce the risk of overheating the UPS, DO NOT cover the UPS' cooling vents and avoid exposing the unit to direct sunlight or installing the unit near heat-emitting appliances such as space heaters or furnaces.
3. DO NOT attach non-computer-related items, such as medical equipment, life-support equipment, microwave ovens, or vacuum cleaners to UPS.
4. DO NOT plug the UPS input into its own output.
5. DO NOT allow liquids or any foreign object to enter the UPS. DO NOT place beverages or any other liquid-containing vessels on or near the unit.
6. In the event of an emergency, press the OFF button and disconnect the power cord from the AC power supply to properly disable the UPS.

7. DO NOT attach a power strip or surge suppressor to the UPS.
8. Attention hazardous through electric shock. Also with disconnection of this unit from the mains, hazardous voltage still may be accessible through supply from battery. The battery supply should be therefore disconnected in the plus and minus pole at the quick connectors of the battery when maintenance or service work inside the UPS is necessary.
9. Servicing of batteries should be performed or supervised by personnel knowledgeable of batteries and the required precautions. Keep unauthorized personnel away from batteries.
10. When replacing the batteries, use the same number and type of batteries.
11. Internal battery voltage is 12VDC. Sealed, lead-acid, 6-cell battery.
12. DO NOT dispose of batteries in a fire. The battery may explode. DO NOT open or mutilate the battery or batteries. Released electrolyte is harmful to the skin and eyes.
13. Unplug the UPS prior to cleaning and DO NOT use liquid or spray detergent.
14. A battery can present a risk of electric shock and high short-circuit current. The following precaution should be observed before replacing batteries:
 - i. Remove watches, rings, or other metal objects.
 - ii. Use tools with insulated handles.
 - iii. Wear rubber gloves and boots.
 - iv. Do not lay tools or metal parts on top of batteries.
 - v. Disconnect charging source prior to connecting or disconnecting batteries terminal.

WARNING:

1. DO NOT modify the UPS input cable.
2. Consult your dealer if the UPS input cable connector does not match the utility receptacle.
3. The UPS must be grounded while in use. Operate the UPS only from a properly grounded AC outlet (2 wire plus ground).
4. Turn off the UPS before unplugging it from the AC outlet.

Package Contents



x 1



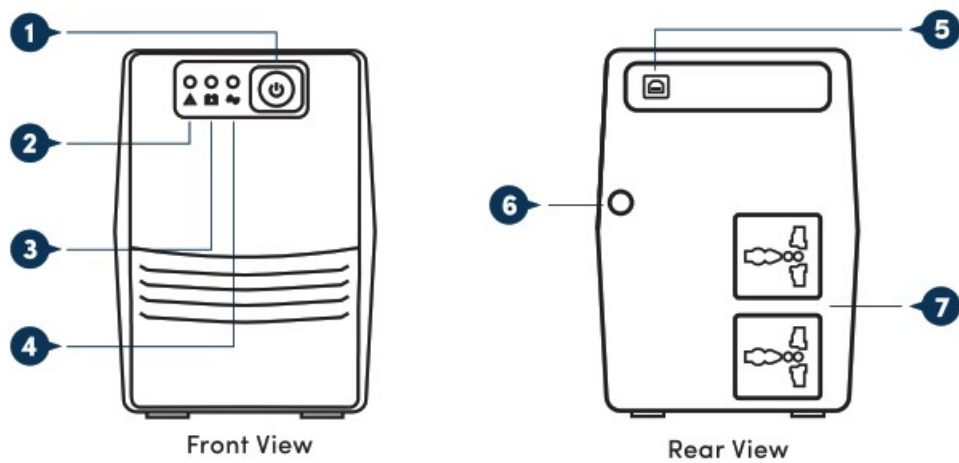
x 1

Note:

1. The illustrations in this document may appear different from your model.
2. If any of above item is not packed in your package when open, please consult your reseller immediately.

Overview

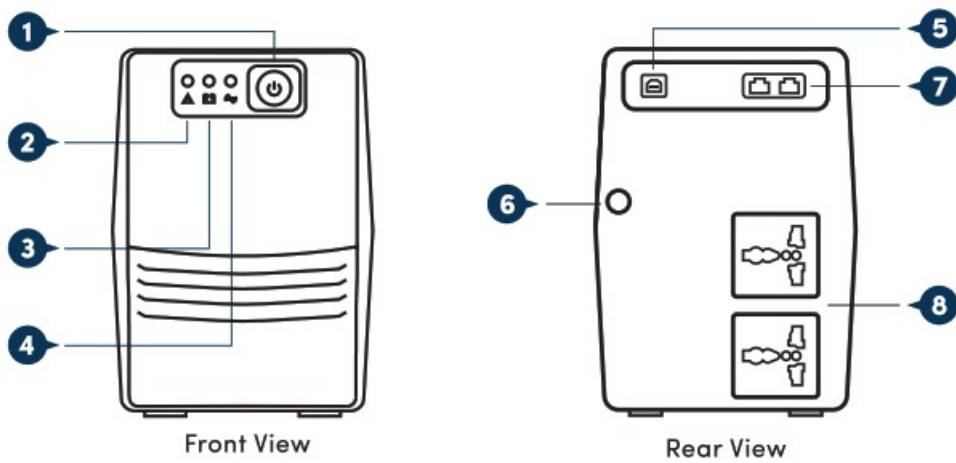
PRO7ZOOSFC/PRO7OOSFCU



Legend:

1. Power Switch 2. Fault Indicator: Red LED Lighting 3 Battery Mode Indicator: Yellow LED Flashing	4. AC Mode Indicator: Green LED Light 5. USB Port (only for PRO700SFCU) 6. Power AC Input 7. Backup Outlets
--	--

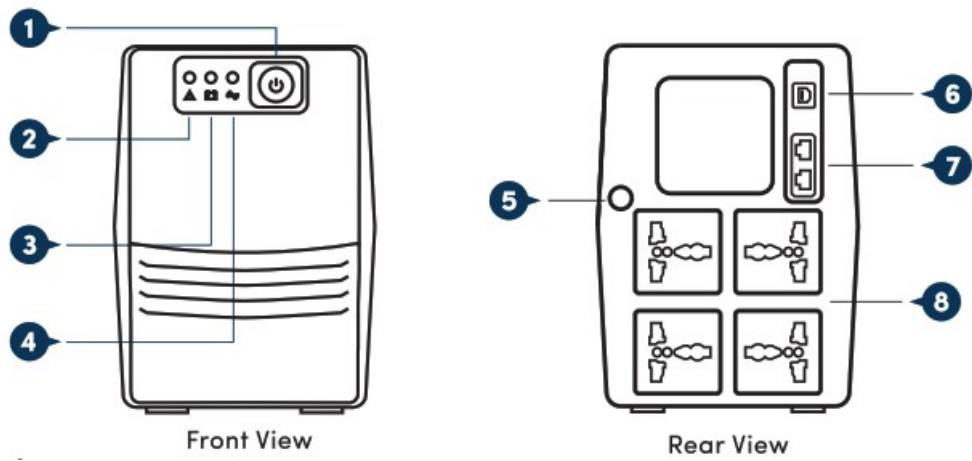
PRO851SFC/PRO851SFCU



Legend:

1. Power Switch 2. Fault Indicator: Red LED Lighting 3. Battery Mode Indicator: Yellow LED Flashing 4. AC Mode Indicator: Green LED Lighting	5. USB Port (only for PRO851SFCU) 6. Power AC Input 7. RJ45 Ports (In & Out) 8. Backup Outlets
---	---

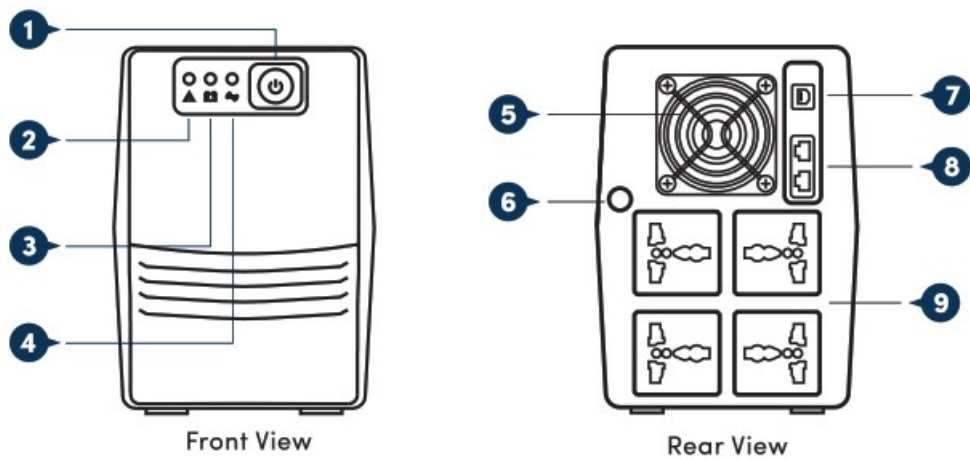
PRO1201SFC/PRO1201SFCU



Legend:

- | | |
|---|---|
| <ul style="list-style-type: none"> 1. Power Switch 2. Fault Indicator: Red LED Lighting 3. Battery Mode Indicator: Yellow LED Flashing 4. AC Mode Indicator: Green LED Lighting | <ul style="list-style-type: none"> 5. Power AC Input 6. USB Port (only for PRO1201SFC) 7. RJ45 Ports (In & Out) 8. Backup Outlets |
|---|---|

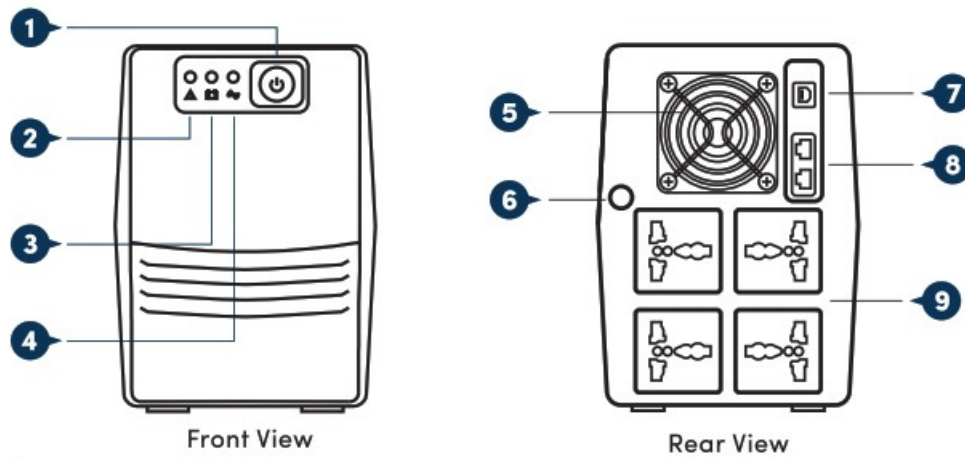
PRO1501SFC/PRO1501SFCU



Legend:

- | | |
|---|---|
| <ul style="list-style-type: none"> 1. Power Switch 2. Fault Indicator: Red LED Lighting 3. Battery Mode Indicator: Yellow LED Flashing 4. AC Mode Indicator: Green LED Lighting | <ul style="list-style-type: none"> 5. Fan 6. Power AC Input 7. USB Port (only for PRO1501SFC) 8. RJ45 Ports (In & Out) 9. Backup Outlets |
|---|---|

PRO2000SFC/PRO2000SFCU



Legend:

<ul style="list-style-type: none"> 1. Power Switch 2. Fault Indicator: Red LED Lighting 3. Battery Mode Indicator: Yellow LED Flashing 4. AC Mode Indicator: Green LED Lighting 	<ul style="list-style-type: none"> 5. Fan 6. Power AC Input 7. USB Port (only for PRO2000SFC) 8. RJ45 Ports (In & Out) 9. Backup Outlets
---	---

Installation & Initial Startup



Note:

Before installation, please inspect the unit. Be sure that nothing inside the package is damaged.

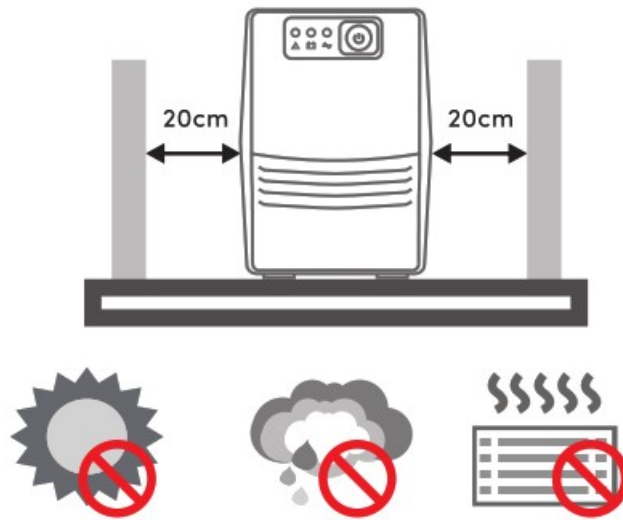
Connect to Utility and Charging

Connect the AC Input Cord from the wall outlet to the UPS. For the best result, suggest to charge the battery at least 6 hours before initial use. The unit charges its battery while connecting to the utility.



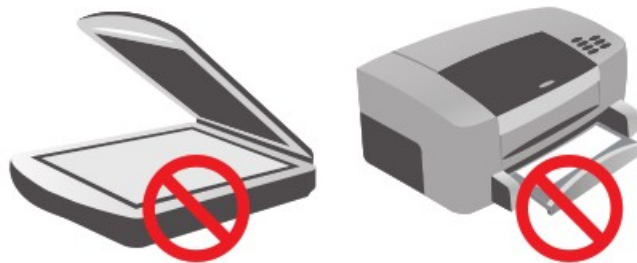
Placement & Storage Conditions

Install the UPS in a protected area that is free of excessive dust and has adequate air flow. Please place the UPS away from other units at least 20cm to avoid interference. DO NOT operate the UPS where the temperature and humidity is outside the specific limits. (Please check the specs for the limitations).



Connect the Loads

Plug in the loads to output receptacles on the rear panel of the UPS. Simply turn on the power switch of UPS unit, and then devices connected to the UPS will be protected by UPS unit.



CAUTION:

NEVER connect a laser printer or scanner to the UPS unit. This may cause the damage of the unit.

Data Line Surge Protection (Only for the model with Rj11/R/45)

Connect a single network/telephone/fax line into surge-protected "IN" outlet on the back panel of the UPS unit. Connect from "OUT" outlet with another network/telephone/fax line cable.

Connect Communication Cable (Only for the model with USB port)

To allow for unattended UPS shutdown/start-up and status monitoring, connect the communication cable one end to the USB port and the other to the communication port of your PC. With the monitoring software installed, you can schedule UPS shutdown/start-up and monitor UPS status through PC.

Turn On/Off the Unit

Turn on the UPS unit by pressing the power switch. Turn off the UPS unit by pressing again the power switch.

Software Download & Installation

Note:

Only for model with USB port.

Please follow steps below to download and install monitoring software:

1. Go to the website <http://www.power-software-download.com>
2. Click ViewPower software icon and then choose your required OS to download the software.
3. Follow the on-screen instruction to install the software.
4. When your computer restarts, the monitoring software will appear as orange plug icon located in the system

tray, near the clock.

5. For UPS with HID-compliant USB Port (optional), you may safely shut down the UPS during power failure simply by connecting to a computer with pre-installed Windows/ Linux/ Mac OS through the USB port even without monitoring software.

Storage and Maintenance

Storage

Before storing, charge the UPS at least 6~8 hours. Store the UPS covered and upright in a cool, dry location. During storage, recharge the battery in accordance with the following table:

STORAGE TEMPERATURE	RECHARGE FREQUENCY	CHARGING DURATION
-25°C – 40°C	Every 3 months	1-2 hours
40°C – 40°C	Every 2 months	1-2 hours

Maintenance



The UPS system operates with hazardous voltages. Repairs may be carried out only by qualified maintenance personnel.



Even after the unit is disconnected from the mains, components inside the UPS system are still connected to the battery packs which are potentially dangerous.



Only persons are adequately familiar with batteries and with the required precautionary measures may replace batteries and supervise operations. Unauthorized persons must be kept well away from the batteries.



Batteries may cause electric shock and have a high short-circuit current. Please remove all wristwatches, rings, and other metal personal objects before maintenance or repair, and only use tools with insulated grips and handles for maintaining or repairing.



When replace the batteries, install the same number and same type of batteries.



Do not attempt to dispose of batteries by burning them. This could cause battery explosion. The batteries must be rightly deposited according to local regulations.



Do not open or destroy batteries. Escaping electrolyte can cause injury to the skin and eyes. It may be toxic.



Do not disassemble the UPS system.

Troubleshooting

Use the table below to solve minor problems.

PROBLEM	POSSIBLE CAUSE	SOLUTIONS
No LED display on the front panel	Low battery	Charge the UPS at least 6 hours
	Battery fault	Replace the battery with the same type of battery
	The UPS is not turned on	Press the power switch again to turn on the UPS
Alarm continuously sounds when the main is normal	The UPS is overload	Remove some loads first. Before reconnecting equipment, please verify that the load matches the UPS capability specified in the specs.
When power fails, backup time is shortening	The UPS is overload	Remove some critical load
	Battery voltage is too low	Charge the UPS at least 6 hours
	Battery defect. It might be due to high-temperature operation environment or improper operation to battery	Replace the battery with the same type of battery
The main is normal but LED is flashing	Power cord is loose	Reconnect the power cord properly

Specifications

MODEL	PRO700SFC/SFCU	PRO851SFC/SFCU	PRO1201SFC/SFCU
Capacity	650 VA	850 VA	1200 VA
INPUT			
Voltage Range	140 – 300VAC t5% for 230VAC mode 140 – 290VAC t5% for 220VAC mode		
Frequency	50Hz/60Hz (Auto-sensing)		
Phase	Single + GND		
OUTPUT			
Voltage Range	220VAC/230VAC + 12%-14%		
Battery Mode	220VAC/230VAC t10%		
Frequency	50Hz t 1% (Battery Mode); 60Hz t 1% (Battery Mode)		
Waveform	Simulated Sine Wave (Battery Mode), Sine Wave (AC Mode)		
Transfer Time	2ms typical		
BATTERY			
Type a Number	12 V/ 8.2 AH x 1	I 12 V/ 10 AH x 1	I 12 V/ 8.2 AH x 2
Backup Time	8 – 30 mins depending on the load		
Charging Time	2 – 4 hours recover to 90% capacity		
PROTECTION /MONITORING			
Short Circuit Protection	Yes (Line Mode and Battery Mode)		

Surge Protection	Yes		
Alarm	Audible & Visual		
UPS Protection	Load Auto Sensing and Abnormal Protection Line Mode -100 – 120% 5mins change to fault mode >120% change to fault mode immediately Battery Mode – 100 -120% 5 secs shut down >120% shutdown immediately		
Overload Protection			
Intelligent Battery	Prevent overcharging of battery		
Management	Protect battery and prolong battery life		
Data Line Surge Protection	—	Rill	RJ45
SOFTWARE MONITORING			
USB Connector #1	AC Fault, Battery Low, Shutdown UPS		
Software #1	Support Windows® 7/ 8/ 10, Linux and Mac		
GENERAL			
Noise Level	< 40dB		
Temperature	0°C – 40°C		
Humidity	0 – 90%		
Power Factor	Up to 0.7		
Built in AVR	TRUE Full AVR (3steps)		
Dimension DxWx H	279 x 101 x 142mm 320 x 130 x 182		
Weight (kg)	4.2	4.9	8.2

MODEL	PRO1501SFC/SKU	I PRO2000SFC/SFCU
Capacity	1500 VA	2000 VA
INPUT		
Voltage Range	140 – 300VAC ±5% for 230VAC mode 140 – 290VAC ±5% for 220VAC mode	
Frequency	50Hz/60Hz (Auto-sensing)	
Phase	Single + GND	
OUTPUT		
Voltage Range	220VAC/230VAC + 12%-14%	
Battery Mode	220VAC/230VAC ±10%	
Frequency	50Hz t 1% (Battery Mode); 60Hz t 1% (Battery Mode)	

Waveform	Simulated Sine Wave (Battery Mode), Sine Wave (AC Mode)
Transfer Time	2ms typical
BATTERY	
Type & Number	12 V/ 10 AH x 2
Backup Time	Up to 40 mins depending on the load
Charging Time	2 – 4 hours recover to 90% capacity
PROTECTION/MONITORING	
Short Circuit Protection	Yes (Line Mode and Battery Mode)
Surge Protection	Yes
Alarm	Audible & Visual
UPS Protection	Load Auto Sensing and Abnormal Protection
Overload Protection	Line Mode -100 – 120% 5mins change to fault mode >120% change to fault mode immediately Battery Mode -100 -120% 5 s ecs shutdown >120% shutdown immediately
Intelligent Battery	Prevent overcharging of battery
Management	Protect battery and prolong battery life
Data Line Surge Protection	RJ45
SOFTWARE MONITORING	
USB Connector Si	AC Fault Battery Low, Shutdown UPS
Software tit	Support Windows® 7/ 8/ 10, Linux and Mac
GENERAL	
Noise Level	< 40dB
Temperature	O'C – 40.0
Humidity	0 – 90%
Power Factor	Up to 0.7
Built-in AVR	TRUE Full AVR (3 steps)
Diamension DxWxH	320 x 130 x 182
Weight (kg)	10.4, 10.6

Note:

#1: Only applicable for model PRO7ZOOSFCU, PRO&851SFCU, PROI201SFCU, PROISOISFCU & PRO2000SFCU

Worldwide Customer Care Centers**INDONESIA Office**

PT PROLINK INTIDATA NUSANTARA

Walk-In: Jl. Cideng Barat No. 79, Jakarta Pusat 10150, Indonesia.

Telephone : +62 213483 1777

Sale Enquiries: sales.id@prolink2u.com

Technical Support: support.id@prolink2u.com

MALAYSIA Office

FIDA SYSTEMS (M) SDN BHD

Walk-In : 29 Jalan USJ 1/31, 47600 Subang Jaya, Selangor Darul Ehsan, Malaysia.

Telephone : +60 3 8024 9151

Sale Enquiries: sales.my@prolink2u.com

Technical Support: support.my@prolink2u.com

SINGAPORE Office

FIDA INTERNATIONAL (S) PTE LTD

Walk-In : Block 16 Kallang Place #06-02, Kallang Basin Industrial Estate, Singapore 339156.

Telephone : +65 6357 0668

Sale Enquiries: sales@prolink2u.com

Technical Support: support@prolink2u.com

Technical Support Hotline

INDONESIA: +62 213483 1717

MALAYSIA : +60 3 8023 9151

SINGAPORE: +65 6357 0666

Note: Closed on Saturdays, Sundays, and local/regional Public Holidays.

Register online for your Product Warranty at www.prolink2u.com

Prolink is a registered trademark of Fida International (S) Pte Ltd. Other brands and product names are trademarks or registered trademarks of their respective holders. Product images are purely for illustrative purposes and may defer from the actual product. Specifications are subjected to changes without prior notice. Copyright © 2022 Fida International (S) Pte Ltd.

Alamat Pengiriman Address

PT. PROLINK INTIDATA NUSANTARA Jl. Cideng Barat No. 79 Jakarta Pusat 10150 – Indonesia

Telp. : (62-21) 34831777

Fax : (62-21) 34830788

Email : support.id@prolink2u.com

Documents / Resources



User Guide

Line interactive UPS
with **SUPER FAST**
charging speed

PRO7003FC, PRO7003FCU,
PRO8015FC, PRO8015FCU,
PRO12015FC, PRO12015FCU,
PRO15015FC, PRO15015FCU,
PRO2003FC, PRO2003FCU

Version 4.60
(English | Indonesian)



Downloaded from
by 91.229.248.110

[prolink PRO700SFC Super Fast Charging Line Interactive](#) [pdf] User Guide
PRO700SFC Super Fast Charging Line Interactive, Super Fast Charging Line Interactive, Line I
nteractive, PRO700SFCU